

木村六郎杯 OPEN TEAMS Session 1 & 2 Flight B 2008年2月23日(土)

1

♠873
♥97
♦AJ9
♣J10865

♠KQ54
♥AQ6
♦1075
♣432

♠J962
♥KJ1085
♦K63
♣K

♠A10
♥432
♦Q842
♣AQ97

Board (1) Av: NS=-130

N-S	E-W	Contract	N-S	E-W	IMP
1	10	3H E 3		140	0
10	1	3C S 3	110		6
2	8	3S W 4		170	-1
8	2	4H E-1	50		5
3	5	4S W 4		420	-7
5	3	4S W-1	50		5
4	7	3H E 3		140	0
7	4	4S W 4		420	-7
6	9	4Cx N-1	100		1
9	6	3S W 3		140	0

2

♠K52
♥Q98
♦K876
♣A72

♠987
♥A1075
♦A2
♣K1063

♠AQJ3
♥62
♦J93
♣QJ84

♠1064
♥KJ43
♦Q1054
♣95

Board (2) Av: NS=-130

N-S	E-W	Contract	N-S	E-W	IMP
1	10	3C W 4		130	0
10	1	1S E 4		170	-1
2	8	2C W 4		130	0
8	2	3C W 4		130	0
3	5	1NT N 2	120		6
5	3	2S W 3		140	0
4	7	2S E 3		140	0
7	4	2NT W 3		150	-1
6	9	1S E 2		110	1
9	6	1S E 3		140	0

3

♠4
♥Q73
♦8432
♣A10964

♠K1087
♥KJ85
♦KQJ
♣87

♠653
♥9642
♦A976
♣J3

♠AQJ92
♥A10
♦105
♣KQ52

Board (3) Av: NS=+130

N-S	E-W	Contract	N-S	E-W	IMP
1	10	2C S 4	130		0
10	1	2C S 4	130		0
2	8	1NT S 2	120		0
8	2	2C S 5	150		1
3	5	1NT S 2	120		0
5	3	2C S 4	130		0
4	7	2C S 4	130		0
7	4	2C S 5	150		1
6	9	2C S 4	130		0
9	6	2C S 3	110		-1

4

♠J9
♥KJ97
♦J
♣K109763

♠K872
♥Q432
♦K82
♣82

♠AQ654
♥A86
♦Q753
♣A

♠103
♥105
♦A10964
♣QJ54

Board (4) Av: NS=-50

N-S	E-W	Contract	N-S	E-W	IMP
1	10	4S E-1	100		4
10	1	4S E-1	100		4
2	8	4S E-1	100		4
8	2	2S E 3	140		-3
3	5	4S E 4	620		-11
5	3	3S E 3	140		-3
4	7	4S E-1	100		4
7	4	4S W 4	620		-11
6	9	4S E-1	100		4
9	6	4S E-1	100		4

5

♠A65
♥3
♦J1076
♣A9862

♠K10
♥A9
♦AKQ843
♣J104

♠Q9
♥KQJ8642
♦92
♣73

♠J87432
♥1075
♦5
♣KQ5

Board (5) Av: NS=-310

N-S	E-W	Contract	N-S	E-W	IMP
1	10	4H E 4		420	-3
10	1	4H E 5		450	-4
2	8	4H E 4		420	-3
8	2	4H E 5		450	-4
3	5	4H E 5		450	-4
5	3	3NT W-1	50		8
4	7	4H E 5		450	-4
7	4	4S S 4	620		14
6	9	4H E 5		450	-4
9	6	3NT W-2	100		9

6

♠A105
♥J98
♦K7
♣KQ1095

♠K97642
♥7
♦AJ
♣A832

♠QJ3
♥Q10642
♦10853
♣4

♠8
♥AK53
♦Q9642
♣J76

Board (6) Av: NS=+10

N-S	E-W	Contract	N-S	E-W	IMP
1	10	4Sx W-2	500		10
10	1	3S W 3	140		-4
2	8	3S W-1	100		3
8	2	5Cx N-2	300		-7
3	5	4C N-1	50		-2
5	3	4C N-1	50		-2
4	7	4C N 4	130		3
7	4	3S W-1	100		3
6	9	3S W-1	100		3
9	6	3S W 3	140		-4

7

♠10984
♥986
♦Q65
♣Q103

♠KQ2
♥K10543
♦87
♣A72

♠753
♥AQ2
♦A4
♣J9864

♠AJ6
♥J7
♦KJ10932
♣K5

Board (7) Av: NS=-250

N-S	E-W	Contract	N-S	E-W	IMP
1	10	3H W 3		140	3
10	1	4H W-1	100		8
2	8	2H W 4		170	2
8	2	2H W 3		140	3
3	5	4H W 4		620	-9
5	3	3H W 3		140	3
4	7	2H W 3		140	3
7	4	2H W 4		170	2
6	9	4Dx S-2	500		-6
9	6	4H W 4		620	-9

8

♠A93
♥86
♦Q9753
♣AQ6

♠75
♥AQJ
♦1042
♣KJ954

♠KQJ82
♥10754
♦J86
♣7

♠1064
♥K932
♦AK
♣10832

Board (8) Av: NS=+50

N-S	E-W	Contract	N-S	E-W	IMP
1	10	3D N-2	100		-4
10	1	1NT N 3	150		3
2	8	3D N-1	50		-3
8	2	2H E-1	50		0
3	5	3D N-2	100		-4
5	3	1NT N 2	120		2
4	7	1NT N 3	150		3
7	4	3D N-1	50		-3
6	9	1NT W-3	150		3
9	6	1NT N 2	120		2

木村六郎杯 OPEN TEAMS Session 1 & 2 Flight B 2008年2月23日(土)

9

♠ Q1095
♥ AQ6
♦ AJ92
♣ A4

♠ A862
♥ KJ
♦ KQ106
♣ 986

♠ KJ74
♥ 1032
♦ 54
♣ Q1032

♠ 3
♥ 98754
♦ 873
♣ KJ75

(N) W—E S

Board (9) Av: NS=+50

N-S	E-W	Contract	N-S	E-W	IMP
1	10	3H	N-1	50	-3
10	1	2H	N 2	110	2
2	8	2H	N-1	50	-3
8	2	3H	N-1	50	-3
3	5	3H	N-1	50	-3
5	3	2H	N 2	110	2
4	7	2H	N 2	110	2
7	4	2H	N 2	110	2
6	9	2H	N 2	110	2
9	6	2H	N 2	110	2

10

♠ Q
♥ AJ8742
♦ J8
♣ 8764

♠ K2
♥ K63
♦ KQ532
♣ Q103

♠ AJ10643
♥ 10
♦ A964
♣ J9

♠ 9875
♥ Q95
♦ 107
♣ AK52

(N) W—E S

Board (10) Av: NS=-360

N-S	E-W	Contract	N-S	E-W	IMP
1	10	3Hx	N-1	200	4
10	1	4S	W 6	680	-8
2	8	3S	W 4	170	5
8	2	4S	W-1	100	10
3	5	3S	W 5	200	4
5	3	4S	W 5	650	-7
4	7	4S	W 5	650	-7
7	4	2S	W 4	170	5
6	9	2S	W 5	200	4
9	6	4S	W 5	650	-7

11

♠ Q10984
♥ AK96
♦ 106
♣ AJ

♠ AK6
♥ Q1032
♦ Q7
♣ K862

♠ J53
♥ 54
♦ AK953
♣ 1043

♠ 72
♥ J87
♦ J842
♣ Q975

(N) W—E S

Board (11) Av: NS=0

N-S	E-W	Contract	N-S	E-W	IMP
1	10	2S	N-2	100	-3
10	1	2S	N-3	150	-4
2	8	1S	N 1	80	2
8	2	3NT	E-2	100	3
3	5	1S	N-1	50	-2
5	3	1S	N-1	50	-2
4	7	2NT	E-1	50	2
7	4	2D	W 2	90	-3
6	9	1S	N 1	80	2
9	6	2NT	E-3	150	4

12

♠ KQ96
♥ 9
♦ AK864
♣ 1093

♠ 102
♥ A743
♦ Q52
♣ AKJ8

♠ AJ543
♥ QJ62
♦ 73
♣ 76

♠ 87
♥ K1085
♦ J109
♣ Q542

(N) W—E S

Board (12) Av: NS=-10

N-S	E-W	Contract	N-S	E-W	IMP
1	10	1NT	E 1	90	-2
10	1	1NT	S-1	100	-3
2	8	1NT	S-1	100	-3
8	2	1NT	S 1	90	3
3	5	1NT	E 1	90	-2
5	3	2NT	E-1	50	2
4	7	1NT	S-1	100	-3
7	4	1NT	N 1	90	3
6	9	1NT	S 1	90	3
9	6	1NT	N 2	120	4

13

♠ AQJ542
♥ A6
♦ A4
♣ Q84

♠ 6
♥ KQJ754
♦ 76
♣ J1052

♠ 987
♥ 10
♦ QJ10982
♣ K73

♠ K103
♥ 9832
♦ K53
♣ A96

(N) W—E S

Board (13) Av: NS=+650

N-S	E-W	Contract	N-S	E-W	IMP
1	9	4S	N 5	650	0
9	1	4S	N 5	650	0
2	7	4S	N 5	650	0
7	2	6S	N-1	100	-13
3	8	4S	N 5	650	0
8	3	4S	N 5	650	0
4	6	4S	N 5	650	0
6	4	4S	N 5	650	0
5	10	4S	N 5	650	0
10	5	4S	N 5	650	0

14

♠ K10
♥ QJ108
♦ AQJ973
♣ 8

♠ Q9863
♥ 97
♦ 1062
♣ A74

♠ A42
♥ 654
♦ K8
♣ QJ632

♠ J75
♥ AK32
♦ 54
♣ K1095

(N) W—E S

Board (14) Av: NS=+460

N-S	E-W	Contract	N-S	E-W	IMP
1	9	4H	S 5	450	0
9	1	4H	S 5	450	0
2	7	4H	S 5	450	0
7	2	4H	S 5	450	0
3	8	4H	N 5	450	0
8	3	4H	S 6	480	1
4	6	4H	N 5	450	0
6	4	4H	S 5	450	0
5	10	4H	N 6	480	1
10	5	4H	N 6	480	1

15

♠ AKQ3
♥ 93
♦ KQ1054
♣ 74

♠ J842
♥ 85
♦ 983
♣ A632

♠ 76
♥ A1076
♦ J72
♣ QJ109

♠ 1095
♥ KQJ42
♦ A6
♣ K85

(N) W—E S

Board (15) Av: NS=+600

N-S	E-W	Contract	N-S	E-W	IMP
1	9	3NT	S 3	600	0
9	1	3NT	N 3	600	0
2	7	3NT	S 3	600	0
7	2	3NT	S 3	600	0
3	8	3NT	S 3	600	0
8	3	3NT	S 3	600	0
4	6	3NT	S 3	600	0
6	4	3NT	S 3	600	0
5	10	3NT	S 3	600	0
10	5	3NT	S 4	630	1

16

♠ K764
♥ K73
♦ 753
♣ A103

♠ J32
♥ 102
♦ KQ942
♣ KQ9

♠ A95
♥ QJ54
♦ AJ
♣ J842

♠ Q108
♥ A986
♦ 1086
♣ 765

(N) W—E S

Board (16) Av: NS=+100

N-S	E-W	Contract	N-S	E-W	IMP
1	9	2NT	W-1	100	0
9	1	2NT	W-1	100	0
2	7	3NT	E 4	630	-12
7	2	2NT	W-1	100	0
3	8	2NT	W-1	100	0
8	3	3NT	W-2	200	3
4	6	2NT	W-1	100	0
6	4	2NT	W-1	100	0
5	10	2NT	W-1	100	0
10	5	2NT	E-1	100	0

17

♠ 1096
♥ QJ2
♦ 106
♣ KQ753

♠ K8752 ♠ Q43
♥ A ♥ 109873
♦ KQ ♦ A84
♣ J10964 ♣ A8

♠ AJ
♥ K654
♦ J97532
♣ 2

Board (17) Av: NS=-150

N-S	E-W	Contract	N-S	E-W	IMP
1	9 4S	W 5		450	-7
9	1 4S	W 4		420	-7
2	7 3S	W 4		170	-1
7	2 4S	W-1	50		5
3	8 4S	W-2	100		6
8	3 4S	W 5		450	-7
4	6 4S	W-1	50		5
6	4 3S	W 4		170	-1
5	10 4S	W-2	100		6
10	5 3S	W 5		200	-2

18

♠ AJ97
♥ K97653
♦ 96
♣ 8

♠ K1085 ♠ 42
♥ A8 ♥ J2
♦ KQJ1032 ♦ A85
♣ K ♣ AQJ1063

♠ Q63
♥ Q104
♦ 74
♣ 97542

Board (18) Av: NS=-520

N-S	E-W	Contract	N-S	E-W	IMP
1	9 6D	W 7		940	-9
9	1 5D	W 7		440	2
2	7 5D	W 7		440	2
7	2 5D	W 7		440	2
3	8 3NT	W 5		460	2
8	3 6D	W 6		920	-9
4	6 3NT	W 7		520	0
6	4 3NT	W 7		520	0
5	10 5D	W 7		440	2
10	5 5D	W 7		440	2

19

♠ A5
♥ K2
♦ J10
♣ J1087632

♠ Q942 ♠ KJ1073
♥ J4 ♥ 96
♦ Q7643 ♦ AK952
♣ K5 ♣ A

♠ 86
♥ AQ108753
♦ 8
♣ Q94

Board (19) Av: NS=-130

N-S	E-W	Contract	N-S	E-W	IMP
1	9 4S	W-1	100		6
9	1 5H	S-2		100	1
2	7 4S	E-1	100		6
7	2 5Hx	N-1		100	1
3	8 5S	W-1	100		6
8	3 4S	E 4		620	-10
4	6 4S	E-1	100		6
6	4 4Sx	W 4		790	-12
5	10 4S	E-1	100		6
10	5 4S	E 4		620	-10

20

♠ 74
♥ Q10
♦ Q9873
♣ Q1096

♠ AJ9 ♠ 106532
♥ 732 ♥ 864
♦ KJ54 ♦ A106
♣ K54 ♣ A3

♠ KQ8
♥ AKJ95
♦ 2
♣ J872

Board (20) Av: NS=-120

N-S	E-W	Contract	N-S	E-W	IMP
1	9 2S	E 2		110	0
9	1 3S	E 3		140	-1
2	7 3H	S-1		100	1
7	2 2S	W 2		110	0
3	8 2S	E 2		110	0
8	3 2S	E 2		110	0
4	6 2S	E 3		140	-1
6	4 2S	E 3		140	-1
5	10 2S	E 2		110	0
10	5 2S	E 2		110	0

21

♠ KQ763
♥ 8653
♦ 4
♣ KJ6

♠ AJ98 ♠ 10
♥ 74 ♥ 1092
♦ A876 ♦ KQJ5
♣ 974 ♣ Q10853

♠ 542
♥ AKQJ
♦ 10932
♣ A2

Board (21) Av: NS=+220

N-S	E-W	Contract	N-S	E-W	IMP
1	9 2H	N 4	170		-2
9	1 2H	N 4	170		-2
2	7 3H	N 3	140		-2
7	2 2H	N 4	170		-2
3	8 4H	N-1		100	-8
8	3 4H	N 4	620		9
4	6 2H	N 4	170		-2
6	4 2H	N 4	170		-2
5	10 4H	N 4	620		9
10	5 1NT	S 2	120		-3

22

♠ A5
♥ J10864
♦ KQ
♣ AK85

♠ Q942 ♠ 107
♥ A52 ♥ K7
♦ 10962 ♦ J84
♣ 104 ♣ QJ9632

♠ KJ863
♥ Q93
♦ A753
♣ 7

Board (22) Av: NS=+440

N-S	E-W	Contract	N-S	E-W	IMP
1	9 4H	N 4	420		-1
9	1 3NT	N 4	430		0
2	7 4H	N 4	420		-1
7	2 4H	N 4	420		-1
3	8 5H	N 5	450		0
8	3 4H	N 5	450		0
4	6 4H	N 5	450		0
6	4 4H	N 5	450		0
5	10 4H	N 5	450		0
10	5 4H	N 4	420		-1

23

♠ AK73
♥ 10863
♦ Q976
♣ A

♠ Q9 ♠ 10542
♥ KJ7 ♥ 42
♦ KJ543 ♦ 102
♣ 854 ♣ QJ1092

♠ J86
♥ AQ95
♦ A8
♣ K763

Board (23) Av: NS=+530

N-S	E-W	Contract	N-S	E-W	IMP
1	9 4H	S 4	620		3
9	1 4H	N-1		100	-12
2	7 4H	N 4	620		3
7	2 4H	N 4	620		3
3	8 4H	N 4	620		3
8	3 4H	N 4	620		3
4	6 4H	N-1		100	-12
6	4 4H	N 4	620		3
5	10 4H	S 4	620		3
10	5 4H	S 5	650		3

24

♠ Q432
♥ 973
♦ A963
♣ Q3

♠ KJ86 ♠ AKQ
♥ J1064 ♥ AKQ
♦ K4 ♦ QJ10
♣ J102 ♣ A987654

♠ A10975
♥ 852
♦ 8752
♣ K

Board (24) Av: NS=-430

N-S	E-W	Contract	N-S	E-W	IMP
1	9 3NT	W 4		430	0
9	1 3NT	W 6		490	-2
2	7 3NT	W 4		430	0
7	2 3H	W 4		170	6
3	8 3NT	W 4		430	0
8	3 3NT	W 6		490	-2
4	6 3NT	W 6		490	-2
6	4 3NT	W 3		400	1
5	10 5C	E 5		400	1
10	5 3NT	W 3		400	1

木村六郎杯 OPEN TEAMS Session 1 & 2 Flight B 2008年2月23日(土)

25

♠ QJ63
♥ Q754
♦ KJ97
♣ 6

♠ 5
♥ KJ1082
♦ 108542
♣ 92

♠ K42
♥ 963
♦ 3
♣ AKJ1087

♠ A10987
♥ A
♦ AQ6
♣ Q543

Board (25) Av: NS=+460

N-S	E-W	Contract	N-S	E-W	IMP
1	8 4S	S 5	450		0
8	1 4S	S 5	450		0
2	10 4S	S 6	480		1
10	2 4S	S 5	450		0
3	6 4S	S 5	450		0
6	3 4S	S 5	450		0
4	9 6S	S 6	980		11
9	4 4S	S 6	480		1
5	7 4S	S 5	450		0
7	5 4S	S 5	450		0

26

♠ 85
♥ J9874
♦ 543
♣ K32

♠ 7643
♥ AQ103
♦ 108
♣ J104

♠ AK10
♥ 5
♦ KQ92
♣ Q9765

♠ QJ92
♥ K62
♦ AJ76
♣ A8

Board (26) Av: NS=-130

N-S	E-W	Contract	N-S	E-W	IMP
1	8 2H	N 2	110		6
8	1 1NT	E 3	150		-1
2	10 2H	S-2	200		-2
10	2 2H	S 2	110		6
3	6 2C	E 3	110		1
6	3 2H	S-2	200		-2
4	9 1NT	E 2	120		0
9	4 2H	S-2	200		-2
5	7 2H	N-2	200		-2
7	5 1NT	E 3	150		-1

27

♠ A1064
♥ KJ5
♦ J1096
♣ 42

♠ KQJ73
♥ Q
♦ 8754
♣ 876

♠ 85
♥ A8763
♦ AK3
♣ KQ3

♠ 92
♥ 10942
♦ Q2
♣ AJ1095

Board (27) Av: NS=+70

N-S	E-W	Contract	N-S	E-W	IMP
1	8 3NT	E-4	200		4
8	1 3NT	E-3	150		2
2	10 3NT	E-3	150		2
10	2 2S	W 2	110		-5
3	6 2S	E 2	110		-5
6	3 3NT	E-4	200		4
4	9 2S	E-1	50		-1
9	4 2S	E 2	110		-5
5	7 3NT	E-4	200		4
7	5 2C	E-1	50		-1

28

♠ 9
♥ A103
♦ KJ42
♣ A8764

♠ K84
♥ KQ864
♦ Q1095
♣ 3

♠ 75
♥ J92
♦ A76
♣ QJ1052

♠ AQJ10632
♥ 75
♦ 83
♣ K9

Board (28) Av: NS=+110

N-S	E-W	Contract	N-S	E-W	IMP
1	8 4S	S-1	100		-5
8	1 4S	S-1	100		-5
2	10 4S	S-1	100		-5
10	2 4S	S-1	100		-5
3	6 3S	S 4	170		2
6	3 4S	S-1	100		-5
4	9 4S	S 4	620		11
9	4 4S	S 4	620		11
5	7 4S	S-1	100		-5
7	5 4S	S 4	620		11

29

♠ J4
♥ Q642
♦ 3
♣ K107642

♠ AK95
♥ 105
♦ A8642
♣ Q8

♠ 10832
♥ 987
♦ KQ95
♣ J3

♠ Q76
♥ AKJ3
♦ J107
♣ A95

Board (29) Av: NS=+90

N-S	E-W	Contract	N-S	E-W	IMP
1	8 3C	S 4	130		1
8	1 3D	W-1	100		0
2	10 3D	W-1	100		0
10	2 1NT	S-1	100		-5
3	6 3C	S 4	130		1
6	3 1NT	S 3	150		2
4	9 1NT	S-1	100		-5
9	4 3C	S 4	130		1
5	7 3C	S 4	130		1
7	5 3C	S 4	130		1

30

♠ Q103
♥ J83
♦ Q98
♣ 10762

♠ A9765
♥ K6
♦ K106
♣ AQ3

♠ J
♥ A1074
♦ J52
♣ KJ854

♠ K842
♥ Q952
♦ A743
♣ 9

Board (30) Av: NS=-400

N-S	E-W	Contract	N-S	E-W	IMP
1	8 3NT	W 3	400		0
8	1 3NT	E 3	400		0
2	10 3NT	E 3	400		0
10	2 3NT	E 3	400		0
3	6 3NT	E 3	400		0
6	3 3NT	E 3	400		0
4	9 3NT	W 3	400		0
9	4 3NT	W 4	430		-1
5	7 1NT	E 3	150		6
7	5 3NT	W 3	400		0

31

♠ QJ2
♥ AQ73
♦ KJ
♣ Q942

♠ A108754
♥ 65
♦ Q85
♣ 53

♠ K63
♥ 10982
♦ A1064
♣ 87

♠ 9
♥ KJ4
♦ 9732
♣ AKJ106

Board (31) Av: NS=+610

N-S	E-W	Contract	N-S	E-W	IMP
1	8 3NT	N 4	630		1
8	1 3NT	N 4	630		1
2	10 3NT	N 4	630		1
10	2 3NT	N 4	630		1
3	6 3NT	N 4	630		1
6	3 3NT	N 4	630		1
4	9 5C	S-1	100		-12
9	4 4Sx	W-3	500		-3
5	7 3NT	S 4	630		1
7	5 3NT	N 4	630		1

32

♠ KQ7
♥ K32
♦ AKJ72
♣ 92

♠ AJ10
♥ 754
♦ 985
♣ Q1063

♠ 9852
♥ 86
♦ 1043
♣ AJ54

♠ 643
♥ AQJ109
♦ Q6
♣ K87

Board (32) Av: NS=+480

N-S	E-W	Contract	N-S	E-W	IMP
1	8 4H	N 5	450		-1
8	1 3NT	N 6	490		0
2	10 4H	N 6	480		0
10	2 4H	N 6	480		0
3	6 4H	N 6	480		0
6	3 4H	N 6	480		0
4	9 4H	N 5	450		-1
9	4 4H	N 6	480		0
5	7 4H	N 6	480		0
7	5 4H	N 6	480		0

33

♠AJ3
♥KQ1052
♦QJ4
♣A8

♠984
♥J6
♦108
♣Q76532

♠Q107
♥A98743
♦63
♣109

♠K652
♥
♦AK9752
♣KJ4

W N E S

Board (33) Av: NS=+690

N-S	E-W	Contract	N-S	E-W	IMP
1	8	6D S 7	940		6
8	1	6NT N 6	990		7
2	10	3NT N 6	490		-5
10	2	6NT N-2		100	-13
3	6	6D S 6	920		6
6	3	6D S 6	920		6
4	9	6D S 6	920		6
9	4	6NT N-1		50	-12
5	7	6D S 6	920		6
7	5	3NT N 6	490		-5

34

♠96
♥A
♦KQJ104
♣AQ654

♠AKJ105
♥764
♦A2
♣K83

♠32
♥KJ1082
♦987
♣1072

♠Q874
♥Q953
♦653
♣J9

W N E S

Board (34) Av: NS=-30

N-S	E-W	Contract	N-S	E-W	IMP
1	8	3D S 3	110		4
8	1	2NT N-2		200	-5
2	10	4D S-1		100	-2
10	2	4D S-2		200	-5
3	6	4D N-1		100	-2
6	3	4D N-1		100	-2
4	9	3H E-3	150		5
9	4	4D N-1		100	-2
5	7	2D N 2	90		3
7	5	3NT N 5	660		12

35

♠Q
♥A86
♦Q843
♣A10742

♠J108
♥KQJ
♦AJ2
♣KJ86

♠A9643
♥73
♦K1075
♣53

♠K752
♥109542
♦96
♣Q9

W N E S

Board (35) Av: NS=-150

N-S	E-W	Contract	N-S	E-W	IMP
1	8	2S W 3	140		0
8	1	2S W 4	170		-1
2	10	2S W 3	140		0
10	2	2S W 3	140		0
3	6	2S W 3	140		0
6	3	3S W-1	100		6
4	9	2S W 3	140		0
9	4	2S W 4	170		-1
5	7	2S W 3	140		0
7	5	2Cx N-2	300		-4

36

♠KJ108
♥2
♦762
♣A9863

♠AQ
♥Q1073
♦AK4
♣KQJ10

♠765
♥AJ865
♦J10
♣754

♠9432
♥K94
♦Q9853
♣2

W N E S

Board (36) Av: NS=-250

N-S	E-W	Contract	N-S	E-W	IMP
1	8	4H W 5	650		-9
8	1	4H W 5	650		-9
2	10	4H E-1	100		8
10	2	4H W-1	100		8
3	6	4H W 4		620	-9
6	3	4H W 4		620	-9
4	9	4H W 4		620	-9
9	4	4H W-1	100		8
5	7	4H W-2	200		10
7	5	4H W-2	200		10

37

♠3
♥Q862
♦102
♣A97642

♠Q9654
♥J10753
♦KQ6
♣

♠KJ1087
♥K9
♦985
♣QJ8

♠A2
♥A4
♦AJ743
♣K1053

W N E S

Board (37) Av: NS=-120

N-S	E-W	Contract	N-S	E-W	IMP
1	7	3C S 4	130		6
7	1	3S E 4		170	-2
2	9	5Sx E-1	100		6
9	2	3NT S-1		100	1
3	10	3NT S-1		100	1
10	3	5S E-1	50		5
4	5	4S E 4		420	-7
5	4	3S E 4		170	-2
6	8	4S E 4		420	-7
8	6	2S E 4		170	-2

38

♠AK93
♥
♦K106532
♣832

♠Q85
♥J64
♦J87
♣AJ75

♠72
♥AKQ97532
♦A
♣Q4

♠J1064
♥108
♦Q94
♣K1096

W N E S

Board (38) Av: NS=-520

N-S	E-W	Contract	N-S	E-W	IMP
1	7	5Dx N-3	500		1
7	1	5S S-2		100	9
2	9	5Dx N-2	300		6
9	2	4H E 6		680	-4
3	10	4H E 5		650	-4
10	3	5H E 5		650	-4
4	5	4H W 5		650	-4
5	4	5S N-2		100	9
6	8	5H E 5		650	-4
8	6	4H E 5		650	-4

39

♠AK102
♥J
♦AQ632
♣K76

♠J9865
♥632
♦J8
♣Q52

♠7
♥1095
♦974
♣AJ10983

♠Q43
♥AKQ874
♦K105
♣4

W N E S

Board (39) Av: NS=+1040

N-S	E-W	Contract	N-S	E-W	IMP
1	7	6D N 7	1390		8
7	1	6D N 6	1370		8
2	9	6D N 7	1390		8
9	2	3NT N 7	720		-8
3	10	3NT N 6	690		-8
10	3	6D N 6	1370		8
4	5	3NT N 7	720		-8
5	4	6D N 6	1370		8
6	8	5H S 6	680		-8
8	6	3NT N 7	720		-8

40

♠A1075
♥K986
♦Q86
♣103

♠K9
♥Q3
♦KJ10
♣KJ9872

♠QJ864
♥AJ75
♦A43
♣A

♠32
♥1042
♦9752
♣Q654

W N E S

Board (40) Av: NS=-440

N-S	E-W	Contract	N-S	E-W	IMP
1	7	3NT W 4	430		0
7	1	3NT W 5	460		-1
2	9	4S E 4	420		1
9	2	3NT W 5	460		-1
3	10	3NT W 4	430		0
10	3	4NT W 5	460		-1
4	5	3NT W 5	460		-1
5	4	3NT W 4	430		0
6	8	3NT E 5	460		-1
8	6	6S E-2	100		11

木村六郎杯 OPEN TEAMS Session 1 & 2 Flight B 2008年2月23日(土)

41

♠AQ102
♥432
♦J963
♣95

♠9843
♥K5
♦A75
♣Q832

♠75
♥J7
♦KQ1084
♣AK64

♠KJ6
♥AQ10986
♦2
♣J107

Board (41) Av: NS=+110

N-S	E-W	Contract	N-S	E-W	IMP
1	7	2H S 4	170		2
7	1	4C E 4		130	-6
2	9	2H S 3	140		1
9	2	3C E 4		130	-6
3	10	2H S 3	140		1
10	3	2H S 3	140		1
4	5	3H S 3	140		1
5	4	2H S 3	140		1
6	8	4H S 4	420		7
8	6	3H S 3	140		1

42

♠Q
♥A632
♦Q1097
♣K654

♠K1074
♥54
♦KJ8653
♣3

♠A8653
♥KJ87
♦2
♣AQ9

♠J92
♥Q109
♦A4
♣J10872

Board (42) Av: NS=-510

N-S	E-W	Contract	N-S	E-W	IMP
1	7	4S E 4		620	-3
7	1	4S E 4		620	-3
2	9	4S E 4		620	-3
9	2	4S E 4		620	-3
3	10	2S E 3	140		9
10	3	4S E 4		620	-3
4	5	2S E 5	200		7
5	4	2S E 4	170		8
6	8	4S E 4		620	-3
8	6	4S E 5		650	-4

43

♠K
♥9743
♦A10543
♣653

♠A753
♥5
♦K987
♣K1042

♠J106
♥QJ2
♦QJ2
♣QJ97

♠Q9842
♥AK1086
♦6
♣A8

Board (43) Av: NS=+300

N-S	E-W	Contract	N-S	E-W	IMP
1	7	2H S 4	170		-4
7	1	2H S 4	170		-4
2	9	4H S 4	420		3
9	2	3H S 4	170		-4
3	10	2H S 4	170		-4
10	3	4H S 4	420		3
4	5	4H S 4	420		3
5	4	4H S 4	420		3
6	8	4H S 4	420		3
8	6	Passout			-7

44

♠652
♥Q108
♦Q10972
♣AK

♠K1098
♥A5
♦A65
♣Q972

♠A743
♥K9632
♦83
♣83

♠QJ
♥J74
♦KJ4
♣J10654

Board (44) Av: NS=-80

N-S	E-W	Contract	N-S	E-W	IMP
1	7	2D N-1		100	-1
7	1	2S W 4		170	-3
2	9	3S W 3		140	-2
9	2	2NT W-2	100		5
3	10	2S W 4		170	-3
10	3	2S W 2		110	-1
4	5	4S W-2	100		5
5	4	2D N-1		100	-1
6	8	2S W 3		140	-2
8	6	1NT W-1	50		4

45

♠Q972
♥AQ63
♦K65
♣K4

♠83
♥KJ10872
♦Q1092
♣7

♠J10654
♥54
♦AJ7
♣Q86

♠AK
♥9
♦843
♣AJ109532

Board (45) Av: NS=+550

N-S	E-W	Contract	N-S	E-W	IMP
1	7	3NT N 6	690		4
7	1	6C S-1		100	-12
2	9	3NT N 7	720		5
9	2	3NT N 4	630		2
3	10	5C N 5	600		2
10	3	3NT N 4	630		2
4	5	3NT N 4	630		2
5	4	3NT N 5	660		3
6	8	6NT N-1		100	-12
8	6	3NT N 4	630		2

46

♠QJ8
♥K1095
♦AQ42
♣Q9

♠9765
♥A8
♦10763
♣1072

♠10432
♥J62
♦K9
♣AJ85

♠AK
♥Q743
♦J85
♣K643

Board (46) Av: NS=+300

N-S	E-W	Contract	N-S	E-W	IMP
1	7	4H N-1		50	-8
7	1	4H N 4	420		3
2	9	4H N 4	420		3
9	2	4H N 4	420		3
3	10	4H N 4	420		3
10	3	4H N-1		50	-8
4	5	4H N 4	420		3
5	4	3NT N 3	400		3
6	8	4H N 4	420		3
8	6	4H N-1		50	-8

47

♠10752
♥985
♦AJ
♣AK106

♠AJ3
♥QJ
♦K9865
♣972

♠Q8
♥AK742
♦1073
♣Q85

♠K964
♥1063
♦Q42
♣J43

Board (47) Av: NS=-90

N-S	E-W	Contract	N-S	E-W	IMP
1	7	3D W 4		130	-1
7	1	2S N-2		200	-3
2	9	2S N-1		100	0
9	2	2D W 3		110	-1
3	10	2S N-1		100	0
10	3	2S N-1		100	0
4	5	3H E-1	50		4
5	4	2D W 3		110	-1
6	8	2S N 2	110		5
8	6	3D W 3		110	-1

48

♠1054
♥962
♦AK94
♣A109

♠AJ63
♥AK83
♦1072
♣J8

♠KQ
♥QJ4
♦Q85
♣KQ732

♠9872
♥1075
♦J63
♣654

Board (48) Av: NS=-630

N-S	E-W	Contract	N-S	E-W	IMP
1	7	3NT W 3		600	1
7	1	3NT W-1	100		12
2	9	3NT W 5		660	-1
9	2	3NT W 3		600	1
3	10	3NT W 6		690	-2
10	3	3NT W 4		630	0
4	5	3NT E 5		660	-1
5	4	3NT W 3		600	1
6	8	3NT W 3		600	1
8	6	3NT E 5		660	-1

木村六郎杯 OPEN TEAMS Session 3 Flight B 2008年2月24日(日)

1

♠ Q984
♥ J9
♦ Q1073
♣ KJ8

♠ A632
♥ Q8742
♦
♣ 9754

♠ K7
♥ K6
♦ KJ82
♣ AQ1063

♠ J105
♥ A1053
♦ A9654
♣ 2

W N E S

Board (1) Av: NS=-90

N-S	E-W	Contract	N-S	E-W	IMP
1	6	2H E 3	140		-2
6	1	2H E 2	110		-1
2	5	3C W 5	150		-2
5	2	2H E 4	170		-2
3	7	2H W 3	140		-2
7	3	3NT E-1 50		50	4
4	10	2H E-1 50		50	4
10	4	2H E 3	140		-2
8	9	2H E 3	140		-2
9	8	3NT E-1 50		50	4

2

♠ Q2
♥ 875
♦ 10532
♣ KQ52

♠ A9653
♥ 62
♦ J94
♣ 1093

♠ K7
♥ 1094
♦ AQ87
♣ A764

♠ J1084
♥ AKQJ3
♦ K6
♣ J8

W N E S

Board (2) Av: NS=+30

N-S	E-W	Contract	N-S	E-W	IMP
1	6	2H S 2	110		2
6	1	3H S 3	140		3
2	5	3H S-1	100		-4
5	2	2H S 2	110		2
3	7	1NT E-1 50		50	1
7	3	2H S 2	110		2
4	10	3H S-1	100		-4
10	4	3H S-1	100		-4
8	9	3H S 3	140		3
9	8	4H N-1	100		-4

3

♠ K87
♥ 9
♦ AQJ9763
♣ 74

♠ Q10942
♥ J654
♦ K
♣ J52

♠ 653
♥ Q1072
♦ 854
♣ A93

♠ AJ
♥ AK83
♦ 102
♣ KQ1086

W N E S

Board (3) Av: NS=+520

N-S	E-W	Contract	N-S	E-W	IMP
1	6	3NT S 6	490		-1
6	1	5D N 6	420		-3
2	5	5D N 6	420		-3
5	2	6D N 6	920		9
3	7	6D N 6	920		9
7	3	3NT S 6	490		-1
4	10	3NT S 6	490		-1
10	4	5D N 6	420		-3
8	9	5D N 6	420		-3
9	8	3NT S 6	490		-1

4

♠ Q53
♥ KQJ10754
♦ 10
♣ 92

♠ J864
♥ 6
♦ KQ754
♣ K108

♠ A97
♥ 3
♦ AJ9862
♣ 764

♠ K102
♥ A982
♦ 3
♣ AQJ53

W N E S

Board (4) Av: NS=+530

N-S	E-W	Contract	N-S	E-W	IMP
1	6	4H N 6	680		4
6	1	4H N 4	620		3
2	5	4H N 4	620		3
5	2	6H N-2	200		-12
3	7	4H N 4	620		3
7	3	4H N 4	620		3
4	10	4H N 5	650		3
10	4	4H N 4	620		3
8	9	4H N 4	620		3
9	8	5H N-1	100		-12

5

♠ AKQ10743
♥ 8
♦ K42
♣ Q5

♠ J9
♥ AKQ72
♦ Q10
♣ J1032

♠ 86
♥ J104
♦ A983
♣ AK87

♠ 52
♥ 9653
♦ J765
♣ 964

W N E S

Board (5) Av: NS=-370

N-S	E-W	Contract	N-S	E-W	IMP
1	6	4H E 4	420		-2
6	1	4H W 5	450		-2
2	5	3S N-2	200		5
5	2	4H W 4	420		-2
3	7	4H W 4	420		-2
7	3	4H W 4	420		-2
4	10	4H W 5	450		-2
10	4	4Sx N-1	200		5
8	9	4Sx N-1	200		5
9	8	4H W 4	420		-2

6

♠ J102
♥ KQ1032
♦ 975
♣ J9

♠ Q853
♥ 7
♦ AK108
♣ K765

♠ A96
♥ J9
♦ Q643
♣ Q1042

♠ K74
♥ A8654
♦ J2
♣ A83

W N E S

Board (6) Av: NS=-90

N-S	E-W	Contract	N-S	E-W	IMP
1	6	4H S-2	100		0
6	1	4H S-2	100		0
2	5	3H S-1	50		1
5	2	3Hx S-1	100		0
3	7	3H S-1	50		1
7	3	3H S-1	50		1
4	10	4H S-2	100		0
10	4	4H S-2	100		0
8	9	3Hx S-1	100		0
9	8	4H S-2	100		0

7

♠ 875
♥ Q9642
♦ Q8
♣ AJ7

♠ A104
♥ J1053
♦ AJ54
♣ K6

♠ K6
♥ AK8
♦ K932
♣ Q982

♠ QJ932
♥ 7
♦ 1076
♣ 10543

W N E S

Board (7) Av: NS=-640

N-S	E-W	Contract	N-S	E-W	IMP
1	6	3NT W 3	600		1
6	1	3NT E 4	630		0
2	5	3NT E 5	660		-1
5	2	3NT W 5	660		-1
3	7	3NT W 4	630		0
7	3	3NT W-1	100		12
4	10	3NT W 5	660		-1
10	4	3NT W 5	660		-1
8	9	3NT E 4	630		0
9	8	3NT W 5	660		-1

8

♠ J865
♥ KQ7
♦ 962
♣ K96

♠ A4
♥ J96
♦ J107
♣ Q8753

♠ 102
♥ 1084
♦ AK543
♣ J42

♠ KQ973
♥ A532
♦ Q8
♣ A10

W N E S

Board (8) Av: NS=+260

N-S	E-W	Contract	N-S	E-W	IMP
1	6	2S S 4	170		-3
6	1	2S S 4	170		-3
2	5	4S S 4	420		4
5	2	2S S 4	170		-3
3	7	2S S 4	170		-3
7	3	4S S 4	420		4
4	10	2S S 4	170		-3
10	4	4S S 4	420		4
8	9	4S S 4	420		4
9	8	2S S 4	170		-3

木村六郎杯 OPEN TEAMS Session 3 Flight B 2008年2月24日(日)

9

♠ Q1083
♥ Q105
♦ J5
♣ A743

♠ AKJ42
♥ 2
♦ AKQ84
♣ K8

♠ 97
♥ A8643
♦ 1062
♣ QJ10

♠ 65
♥ KJ97
♦ 973
♣ 9652

W — E
S

Board (9) Av: NS=-620

N-S	E-W	Contract	N-S	E-W	IMP
1	6	4S W 4		620	0
6	1	3NT E 4		630	0
2	5	3NT E 5		660	-1
5	2	3NT E 3		600	1
3	7	4S W-1 100			12
7	3	3NT E 4		630	0
4	10	3NT E 4		630	0
10	4	3NT E 4		630	0
8	9	3NT E 3		600	1
9	8	3NT E 3		600	1

10

♠ Q96
♥ 875
♦ KJ853
♣ J6

♠ 3
♥ AKJ109
♦ A642
♣ K108

♠ AJ107
♥ Q3
♦ 10
♣ Q97532

♠ K8542
♥ 642
♦ Q97
♣ A4

W — E
S

Board (10) Av: NS=-320

N-S	E-W	Contract	N-S	E-W	IMP
1	6	2H W 4		170	4
6	1	2H W 6		230	3
2	5	2H W 4		170	4
5	2	3NT W 6		690	-9
3	7	3NT E 6		690	-9
7	3	3NT W 3		600	-7
4	10	2H W 6		230	3
10	4	2H W 6		230	3
8	9	2H W 6		230	3
9	8	2H W 4		170	4

11

♠ J95
♥ A
♦ Q10983
♣ J963

♠ KQ
♥ KQ875
♦ 42
♣ 8742

♠ 1032
♥ J9643
♦ J765
♣ K

♠ A8764
♥ 102
♦ AK
♣ AQ105

W — E
S

Board (11) Av: NS=+410

N-S	E-W	Contract	N-S	E-W	IMP
1	6	4S S 5		450	1
6	1	4S S 5		450	1
2	5	4S S-1 50			-10
5	2	4S S 5		450	1
3	7	1NT S 3		150	-6
7	3	4S S 5		450	1
4	10	4S S 5		450	1
10	4	4S S 5		450	1
8	9	4S S 4		420	0
9	8	4S S 5		450	1

12

♠ AJ10973
♥ 3
♦ Q1052
♣ KJ

♠ K
♥ AKJ10974
♦ K98
♣ 86

♠ Q6542
♥
♦ A3
♣ AQ9432

♠ 8
♥ Q8652
♦ J764
♣ 1075

W — E
S

Board (12) Av: NS=-420

N-S	E-W	Contract	N-S	E-W	IMP
1	6	4H W 4		420	0
6	1	3NT E 5		460	-1
2	5	2Sx N 2 670			14
5	2	4H W 4		420	0
3	7	3NT E 3		400	1
7	3	4H W 4		420	0
4	10	4H W 5		450	-1
10	4	4H W 4		420	0
8	9	4H W 5		450	-1
9	8	5C E 5		400	1

13

♠ Q8765
♥ J852
♦ Q8
♣ A2

♠ K10
♥ K4
♦ A1042
♣ Q9743

♠ AJ93
♥ AQ1096
♦ 7
♣ J85

♠ 42
♥ 73
♦ KJ9653
♣ K106

W — E
S

Board (13) Av: NS=-150

N-S	E-W	Contract	N-S	E-W	IMP
1	5	3NT W 3		600	-10
5	1	3NT W-1 100			6
2	6	3NT W-1 100			6
6	2	3NT W-2 200			8
3	9	3NT E-2 200			8
9	3	3NT W 3		600	-10
4	8	3NT W 3		600	-10
8	4	3NT W-1 100			6
7	10	3NT E 4		630	-10
10	7	3NT W-1 100			6

14

♠ K843
♥ KQ3
♦ 1084
♣ J64

♠ 10976
♥ 106
♦ AK7
♣ K1093

♠ Q5
♥ J92
♦ QJ632
♣ A52

♠ AJ2
♥ A8754
♦ 95
♣ Q87

W — E
S

Board (14) Av: NS=-10

N-S	E-W	Contract	N-S	E-W	IMP
1	5	Passout			0
5	1	Passout			0
2	6	Passout			0
6	2	Passout			0
3	9	3H S-1 50			-1
9	3	3H S-1 50			-1
4	8	Passout			0
8	4	Passout			0
7	10	Passout			0
10	7	Passout			0

15

♠ J
♥ Q9876
♦ AK97
♣ K62

♠ AK106
♥ K53
♦ 654
♣ A95

♠ Q5
♥ 1042
♦ Q103
♣ 108743

♠ 987432
♥ AJ
♦ J82
♣ QJ

W — E
S

Board (15) Av: NS=+30

N-S	E-W	Contract	N-S	E-W	IMP
1	5	3S S-2 200			-6
5	1	2H N 3 140			3
2	6	2H N 2 110			2
6	2	3S S-2 200			-6
3	9	2D N 3 110			2
9	3	2C W 2 90			-3
4	8	2H N 3 140			3
8	4	3H N-1 100			-4
7	10	3H N 3 140			3
10	7	2H N 3 140			3

16

♠ J1087
♥ J9
♦ KQ10
♣ AQ75

♠ Q64
♥ A742
♦ J643
♣ J8

♠ 53
♥ KQ63
♦ 72
♣ 109632

♠ AK92
♥ 1085
♦ A985
♣ K4

W — E
S

Board (16) Av: NS=+430

N-S	E-W	Contract	N-S	E-W	IMP
1	5	4S S 4 420			0
5	1	4S S 4 420			0
2	6	4S S 5 450			1
6	2	4S S 5 450			1
3	9	4S S 4 420			0
9	3	4S S 4 420			0
4	8	4S S 4 420			0
8	4	4S S 4 420			0
7	10	4S S 5 450			1
10	7	4S S 5 450			1

17

♠863
♥109752
♦K3
♣A84

♠Q107
♥43
♦7542
♣9653

W N E S

♠KJ4
♥KJ86
♦AQJ106
♣7

♠A952
♥AQ
♦98
♣KQJ102

Board (17) Av: NS=-10

N-S	E-W	Contract	N-S	E-W	IMP
1	5	3H N-1		50	-1
5	1	3D E-1	50		2
2	6	3D E 3		110	-3
6	2	3C S-1		50	-1
3	9	4D E-1	50		2
9	3	4D E-2	100		3
4	8	3D E-1	50		2
8	4	3D E-1	50		2
7	10	3C S-1		50	-1
10	7	4C S-2	100		-3

18

♠63
♥K94
♦Q1052
♣AJ102

♠AKJ84
♥5
♦A73
♣K865

W N E S

♠Q972
♥A1082
♦K94
♣Q7

♠105
♥QJ763
♦J86
♣943

Board (18) Av: NS=-450

N-S	E-W	Contract	N-S	E-W	IMP
1	5	4S W 5		450	0
5	1	4S W 5		450	0
2	6	4S W 6		480	-1
6	2	4S W 5		450	0
3	9	4S W 5		450	0
9	3	4S W 5		450	0
4	8	4S W 5		450	0
8	4	4S W 5		450	0
7	10	4S W 5		450	0
10	7	4S W 5		450	0

19

♠9
♥Q93
♦A10975
♣AJ53

♠874
♥AKJ85
♦K6
♣Q102

W N E S

♠Q6532
♥1072
♦J82
♣84

♠AKJ10
♥64
♦Q43
♣K976

Board (19) Av: NS=+110

N-S	E-W	Contract	N-S	E-W	IMP
1	5	3NT N-1		50	-4
5	1	5C S-1		50	-4
2	6	3NT N-1		50	-4
6	2	3NT N 3	400		7
3	9	5D N-1		50	-4
9	3	5D N-2		100	-5
4	8	3NT N 4	430		8
8	4	4D N 4	130		1
7	10	3D N 3	110		0
10	7	3NT N 3	400		7

20

♠93
♥K1082
♦Q1065
♣AK7

♠QJ2
♥AQ96
♦AJ87
♣95

W N E S

♠1064
♥J
♦K9
♣QJ108432

♠AK875
♥7543
♦432
♣6

Board (20) Av: NS=+110

N-S	E-W	Contract	N-S	E-W	IMP
1	5	3C E 3		110	-6
5	1	1NT E 1		90	-5
2	6	3NT E-3	300		5
6	2	1NT E-1	100		0
3	9	1NT E-1	100		0
9	3	1NT E-1	100		0
4	8	4Cx E-2	500		9
8	4	1NT E-2	200		3
7	10	1NT W-1	100		0
10	7	1NT E-1	100		0

21

♠AJ3
♥J
♦AKQ42
♣10864

♠Q985
♥1092
♦J1075
♣75

W N E S

♠10762
♥A653
♦6
♣AQ92

♠K4
♥KQ874
♦983
♣KJ3

Board (21) Av: NS=+630

N-S	E-W	Contract	N-S	E-W	IMP
1	5	3NT N 4	630		0
5	1	3NT N 4	630		0
2	6	3NT N 3	600		-1
6	2	3NT S 4	630		0
3	9	3NT N 4	630		0
9	3	3NT S 4	630		0
4	8	3NT N 3	600		-1
8	4	3NT N 4	630		0
7	10	3NT S 5	660		1
10	7	3NT N 4	630		0

22

♠KJ86
♥Q
♦J1084
♣J953

♠A1097432
♥5
♦A975
♣6

W N E S

♠Q5
♥K642
♦K6
♣Q8742

♠AJ109873
♥Q32
♦AK10

Board (22) Av: NS=+50

N-S	E-W	Contract	N-S	E-W	IMP
1	5	4H S 4	420		9
5	1	4Hx S 4	590		11
2	6	4H S-1		50	-3
6	2	5Hx S-1		100	-4
3	9	4H S-1		50	-3
9	3	3S W-1	100		2
4	8	5Hx S-2		300	-8
8	4	4H S-1		50	-3
7	10	4H S 4	420		9
10	7	5Hx S-4		800	-13

23

♠KJ1092
♥Q93
♦K2
♣1092

♠Q7
♥10874
♦8543
♣Q74

W N E S

♠A865
♥A652
♦AJ9
♣KJ

♠43
♥KJ
♦Q1076
♣A8653

Board (23) Av: NS=+80

N-S	E-W	Contract	N-S	E-W	IMP
1	5	1NT E-1	100		1
5	1	1NTxE-2	500		9
2	6	1NT E 1		90	-5
6	2	1NT E 1		90	-5
3	9	1NT E-1	100		1
9	3	1NT E-1	100		1
4	8	1S N 3	140		2
8	4	1NT E-1	100		1
7	10	1NT E-1	100		1
10	7	1NT E-1	100		1

24

♠J986
♥KJ8
♦KQ8
♣542

♠Q7
♥A9542
♦632
♣J107

W N E S

♠A432
♥76
♦AJ4
♣AK96

♠K105
♥Q103
♦10975
♣Q83

Board (24) Av: NS=-120

N-S	E-W	Contract	N-S	E-W	IMP
1	5	2H E 2		110	0
5	1	2H E 2		110	0
2	6	2H E 3		140	-1
6	2	2H E 2		110	0
3	9	2H E 3		140	-1
9	3	2H E 3		140	-1
4	8	2H E 3		140	-1
8	4	2H E 2		110	0
7	10	2H E 2		110	0
10	7	3NT E-1	50		5

木村六郎杯 OPEN TEAMS Session 4 Flight B 2008年2月24日(日)

1

♠ J10832
♥ 652
♦ 72
♣ J93

♠ AKQ75
♥ AJ
♦ 1095
♣ Q54

♠ 10974
♥ 10974
♦ AKJ86
♣ K762

W N E S

♠ 964
♥ KQ83
♦ Q43
♣ A108

Board (1) Av: NS=-430

N-S	E-W	Contract	N-S	E-W	IMP
1	4	3NT W 5		460	-1
4	1	3NT W 4		430	0
2	3	3NT W 4		430	0
3	2	3NT E 4		430	0
5	6	3NT W 4		430	0
6	5	3NT E 5		460	-1
7	8	3NT E 4		430	0
8	7	3NT W 4		430	0
9	10	3NT E 4		430	0
10	9	3NT W 4		430	0

2

♠ A106
♥ AQ832
♦ KQ
♣ K96

♠ Q872
♥ J5
♦ 93
♣ A10732

♠ KJ5
♥ 76
♦ J754
♣ QJ54

W N E S

♠ 943
♥ K1094
♦ A10862
♣ 8

Board (2) Av: NS=+660

N-S	E-W	Contract	N-S	E-W	IMP
1	4	4H N 5	650		0
4	1	4H N 5	650		0
2	3	4H N 6	680		1
3	2	4H N 4	620		-1
5	6	4H N 5	650		0
6	5	6H N 6	1430		13
7	8	4H N 5	650		0
8	7	4H N 4	620		-1
9	10	4H N 6	680		1
10	9	4H N 6	680		1

3

♠ K10986
♥ Q109
♦ J5
♣ Q72

♠ A3
♥ K8763
♦ AQ
♣ J864

♠ QJ7
♥ A4
♦ K8642
♣ A105

W N E S

♠ 542
♥ J52
♦ 10973
♣ K93

Board (3) Av: NS=-520

N-S	E-W	Contract	N-S	E-W	IMP
1	4	3NT W-1	100		12
4	1	3NT W 4	630		-3
2	3	3NT W 3	600		-2
3	2	3NT W 3	600		-2
5	6	3NT W 3	600		-2
6	5	3NT W 4	630		-3
7	8	3NT W 4	630		-3
8	7	3NT E 3	600		-2
9	10	4H E-1	100		12
10	9	3NT W 6	690		-5

4

♠ 106
♥ 974
♦ KJ10843
♣ K2

♠ Q83
♥ K108632
♦ 9
♣ A103

♠ 9754
♥ QJ
♦ A752
♣ 874

W N E S

♠ AKJ2
♥ A5
♦ Q6
♣ QJ965

Board (4) Av: NS=-80

N-S	E-W	Contract	N-S	E-W	IMP
1	4	3NT S-3	300		-6
4	1	4D N 4	130		5
2	3	3D N 4	130		5
3	2	3H E-2	200		7
5	6	3NT S-2	200		-3
6	5	3NT S-3	300		-6
7	8	3D N 3	110		5
8	7	3NT N-3	300		-6
9	10	3NT S-3	300		-6
10	9	3D N 4	130		5

5

♠ Q7543
♥ 6
♦ J8632
♣ J7

♠ J962
♥ Q1098732
♦
♣ 104

♠ AK8
♥ K5
♦ KQ104
♣ AQ93

W N E S

♠ 10
♥ AJ4
♦ A975
♣ K8652

Board (5) Av: NS=-370

N-S	E-W	Contract	N-S	E-W	IMP
1	4	4H E 4	420		-2
4	1	5H E-1	50		9
2	3	4H E 5	450		-2
3	2	4H E 5	450		-2
5	6	5H E 5	450		-2
6	5	4H E 4	420		-2
7	8	4H E 4	420		-2
8	7	6NT W-3	150		11
9	10	4H E 4	420		-2
10	9	4H E 4	420		-2

6

♠ Q75
♥ A10943
♦ 2
♣ A973

♠ AKJ64
♥
♦ J7653
♣ J86

♠ 10983
♥ Q72
♦ K84
♣ Q52

W N E S

♠ 2
♥ KJ865
♦ AQ109
♣ K104

Board (6) Av: NS=+440

N-S	E-W	Contract	N-S	E-W	IMP
1	4	4H S 4	420		-1
4	1	4H S 5	450		0
2	3	4H S 4	420		-1
3	2	4H S 5	450		0
5	6	4Sx E-3	800		8
6	5	4Sx E-1	200		-6
7	8	4H S 5	450		0
8	7	4H S 4	420		-1
9	10	4H S 5	450		0
10	9	4H S 4	420		-1

7

♠ A75
♥ AQ1086
♦ KJ86
♣ 4

♠ K109
♥ 53
♦ 5432
♣ K876

♠ Q643
♥ K742
♦ A
♣ QJ109

W N E S

♠ J82
♥ J9
♦ Q1097
♣ A532

Board (7) Av: NS=+30

N-S	E-W	Contract	N-S	E-W	IMP
1	4	3D N-1	100		-4
4	1	3C W 3	110		-4
2	3	3D N 3	110		2
3	2	5D N-1	100		-4
5	6	2D N 5	150		3
6	5	3C W 3	110		-4
7	8	4H N 4	620		11
8	7	2D N 3	110		2
9	10	2D N 3	110		2
10	9	3C W-1	100		2

8

♠ A10653
♥ KJ74
♦ J943
♣

♠ Q982
♥ A10932
♦ 107
♣ 74

♠ K74
♥ 5
♦ K2
♣ AQJ10986

W N E S

♠ J
♥ Q86
♦ AQ865
♣ K532

Board (8) Av: NS=-70

N-S	E-W	Contract	N-S	E-W	IMP
1	4	3NT S-3	150		-2
4	1	3D S 5	150		6
2	3	2C W 3	110		-1
3	2	2NT W 3	150		-2
5	6	4Cx W-1	100		5
6	5	3NT S-4	200		-4
7	8	3NT S-4	200		-4
8	7	5D S-1	50		1
9	10	3D S 3	110		5
10	9	2C W 3	110		-1

木村六郎杯 OPEN TEAMS Session 4 Flight B 2008年2月24日(日)

9

♠AJ752
 ♥QJ8
 ♦107
 ♣J86
 ♠98
 ♥K106
 ♦AQJ
 ♣109432
 ♠643
 ♥A53
 ♦K96542
 ♣5
 (N) (E) (S)
 ♠KQ10
 ♥9742
 ♦83
 ♣AKQ7

Board (9) Av: NS=+120

N-S	E-W	Contract	N-S	E-W	IMP
1	4	3S N 3	140		1
4	1	2Dx E 3	380		-11
2	3	1NT S 3	150		1
3	2	2S N 3	140		1
5	6	2S N 4	170		2
6	5	3S N 4	170		2
7	8	1NT S 3	150		1
8	7	1NT S 3	150		1
9	10	2S N 3	140		1
10	9	4S N-1	50		-5

10

♠A106
 ♥53
 ♦A876
 ♣AK106
 ♠8
 ♥QJ1072
 ♦KQ1054
 ♣J9
 ♠KQJ9743
 ♥84
 ♦3
 ♣832
 (N) (E) (S)
 ♠52
 ♥AK96
 ♦J92
 ♣Q754

Board (10) Av: NS=+210

N-S	E-W	Contract	N-S	E-W	IMP
1	4	3S E-3	300		3
4	1	3S E-2	200		0
2	3	3NT N 3	600		9
3	2	3NT N 3	600		9
5	6	3NT N-1	100		-7
6	5	3NT N-1	100		-7
7	8	3NT N-1	100		-7
8	7	3S E-3	300		3
9	10	2S E-2	200		0
10	9	3S E-3	300		3

11

♠AK653
 ♥J
 ♦J985
 ♣AJ8
 ♠QJ97
 ♥AK953
 ♦KQ109
 ♣KQ109
 ♠10842
 ♥642
 ♦K4
 ♣7653
 (N) (E) (S)
 ♠Q1087
 ♥AQ107632
 ♣42

Board (11) Av: NS=-440

N-S	E-W	Contract	N-S	E-W	IMP
1	4	4Sx N-2	300		4
4	1	4H W 5	450		0
2	3	4H W 5	450		0
3	2	4H W 6	480		-1
5	6	4H E 6	480		-1
6	5	4H E 4	420		1
7	8	4H W 5	450		0
8	7	4Sx N-2	300		4
9	10	5Sx N-3	500		-2
10	9	4H W 5	450		0

12

♠KQ5
 ♥Q874
 ♦92
 ♣A1064
 ♠J8742
 ♥653
 ♦J743
 ♣9
 ♠103
 ♥J1092
 ♦AK85
 ♣Q52
 (N) (E) (S)
 ♠A96
 ♥AK
 ♦Q106
 ♣KJ873

Board (12) Av: NS=+540

N-S	E-W	Contract	N-S	E-W	IMP
1	4	3NT S 5	660		3
4	1	3NT S 5	660		3
2	3	6C N-2	200		-12
3	2	3NT S 4	630		3
5	6	3NT S 4	630		3
6	5	3NT S 5	660		3
7	8	3NT S-1	100		-12
8	7	3NT S 3	600		2
9	10	3NT S 4	630		3
10	9	3NT S 4	630		3

13

♠J6
 ♥J985
 ♦AJ92
 ♣Q107
 ♠8543
 ♥K10
 ♦Q63
 ♣8652
 ♠A10972
 ♥A
 ♦K754
 ♣A43
 (N) (E) (S)
 ♠KQ
 ♥Q76432
 ♦108
 ♣KJ9

Board (13) Av: NS=-140

N-S	E-W	Contract	N-S	E-W	IMP
1	3	3S E 3	140		0
3	1	3S E 3	140		0
2	4	3S E 3	140		0
4	2	3S E 3	140		0
5	8	3S E 3	140		0
8	5	3S E 3	140		0
6	10	3S E 3	140		0
10	6	4S E-1	100		6
7	9	3S E 3	140		0
9	7	4H S-2	200		-2

14

♠J1076532
 ♥10964
 ♦Q
 ♣J
 ♠A84
 ♥QJ53
 ♦AJ104
 ♣A8
 ♠9
 ♥AK8
 ♦K753
 ♣K9762
 (N) (E) (S)
 ♠KQ
 ♥72
 ♦9862
 ♣Q10543

Board (14) Av: NS=-450

N-S	E-W	Contract	N-S	E-W	IMP
1	3	3NT W 4	430		1
3	1	2Sx N-2	300		4
2	4	4H W 6	480		-1
4	2	3NT W 5	460		0
5	8	3NT W 4	430		1
8	5	3NT W 5	460		0
6	10	3NT E 5	460		0
10	6	3NT W 4	430		1
7	9	3NT W 5	460		0
9	7	6H W 6	980		-11

15

♠K87
 ♥3
 ♦AQJ32
 ♣9732
 ♠432
 ♥K106
 ♦10976
 ♣1054
 ♠Q965
 ♥Q742
 ♦84
 ♣A86
 (N) (E) (S)
 ♠AJ10
 ♥AJ985
 ♦K5
 ♣KQJ

Board (15) Av: NS=+690

N-S	E-W	Contract	N-S	E-W	IMP
1	3	3NT N 6	690		0
3	1	3NT N 6	690		0
2	4	3NT N 6	690		0
4	2	3NT N 6	690		0
5	8	3NT N 6	690		0
8	5	6C S 6	1370		12
6	10	3NT N 6	690		0
10	6	3NT N 6	690		0
7	9	3NT N 6	690		0
9	7	3NT N 6	690		0

16

♠10432
 ♥7
 ♦1065
 ♣KQ982
 ♠A8
 ♥K1053
 ♦QJ9432
 ♣J
 ♠QJ765
 ♥96
 ♦AK8
 ♣1053
 (N) (E) (S)
 ♠K9
 ♥AQJ842
 ♦7
 ♣A764

Board (16) Av: NS=+80

N-S	E-W	Contract	N-S	E-W	IMP
1	3	3D W 4	130		-5
3	1	2H S 3	140		2
2	4	2Hx S 3	570		10
4	2	2H S 3	140		2
5	8	3H S 3	140		2
8	5	2H S 2	110		1
6	10	2H S 3	140		2
10	6	2NT W 3	150		-6
7	9	4H S-1	50		-4
9	7	3H S 3	140		2

17

♠ A75
♥ 63
♦ 10762
♣ Q932

♠ 108
♥ Q8754
♦ 95
♣ AK107

♠ KQJ932
♥ 2
♦ K83
♣ 654

♠ 64
♥ AKJ109
♦ AQJ4
♣ J8

Board (17) Av: NS=-20

N-S	E-W	Contract	N-S	E-W	IMP
1	3	3C	S-4	200	-5
3	1	3NT	N 3	400	9
2	4	3H	S-3	150	-4
4	2	3H	S 3	140	4
5	8	3C	N-2	100	-2
8	5	3H	S-1	50	-1
6	10	3H	S 3	140	4
10	6	3H	S-2	100	-2
7	9	3S	W-2	100	3
9	7	3NT	N-2	100	-2

18

♠ AJ8632
♥ Q95
♦ Q762
♣

♠ J732
♥ AJ1085
♦ A1076
♣ A1076

♠ KQ9754
♥ A10864
♦ 4
♣ J

♠ 10
♥ K
♦ K93
♣ KQ985432

Board (18) Av: NS=-170

N-S	E-W	Contract	N-S	E-W	IMP
1	3	4H	E-2	100	7
3	1	4H	E-1	50	6
2	4	4H	E 4	420	-6
4	2	5Cx	S-4	1100	-14
5	8	4H	E 4	420	-6
8	5	4H	E 4	420	-6
6	10	4Hx	E-2	300	10
10	6	4H	E 5	450	-7
7	9	4H	E-2	100	7
9	7	4H	E-2	100	7

19

♠ K9
♥ KJ9632
♦ A105
♣ 86

♠ AQ8543
♥ 8
♦ J3
♣ AJ92

♠ J1072
♥ AQ54
♦ 872
♣ 75

♠ 6
♥ 107
♦ KQ964
♣ KQ1043

Board (19) Av: NS=-260

N-S	E-W	Contract	N-S	E-W	IMP
1	3	4S	W-2	200	10
3	1	4S	W 4	620	-8
2	4	5Hx	N-2	300	-1
4	2	5Hx	N-2	300	-1
5	8	3S	W 4	170	3
8	5	3Sx	W 4	930	-12
6	10	4H	N-1	50	5
10	6	3S	W 4	170	3
7	9	5D	S-3	150	3
9	7	5Hx	N-2	300	-1

20

♠ Q6
♥ K10964
♦ K109
♣ 732

♠ AJ1083
♥ 2
♦ AJ82
♣ A104

♠ 4
♥ QJ3
♦ Q753
♣ KQJ85

♠ K9752
♥ A875
♦ 64
♣ 96

Board (20) Av: NS=-50

N-S	E-W	Contract	N-S	E-W	IMP
1	3	3NT	E-1	100	4
3	1	3NT	E-2	200	6
2	4	3NT	E-1	100	4
4	2	3NT	E-1	100	4
5	8	3D	W 3	110	-2
8	5	3NT	E-1	100	4
6	10	3NT	E 3	600	-11
10	6	3NT	E 4	630	-11
7	9	2NT	W 4	180	-4
9	7	3NT	E-1	100	4

21

♠ KJ2
♥ AK985
♦ 106
♣ 865

♠ Q854
♥ Q4
♦ KJ94
♣ 1042

♠ A109
♥ 107
♦ AQ732
♣ A73

♠ 763
♥ J632
♦ 85
♣ KQJ9

Board (21) Av: NS=+40

N-S	E-W	Contract	N-S	E-W	IMP
1	3	3H	N-1	100	-4
3	1	2D	E 2	90	-4
2	4	3H	N 3	140	3
4	2	4D	E-2	100	2
5	8	4D	E-2	100	2
8	5	2D	E 2	90	-4
6	10	4H	N-1	100	-4
10	6	3H	N 4	170	4
7	9	3H	N 3	140	3
9	7	4D	E-2	100	2

22

♠ QJ9
♥ Q109
♦ K
♣ K109872

♠ A865432
♥ 752
♦ 9
♣ Q5

♠ 10
♥ AJ4
♦ AJ10852
♣ A64

♠ K7
♥ K863
♦ Q7643
♣ J3

Board (22) Av: NS=-110

N-S	E-W	Contract	N-S	E-W	IMP
1	3	2S	W 3	140	-1
3	1	3D	E-2	200	7
2	4	2S	W 5	200	-3
4	2	3S	W 4	170	-2
5	8	2S	W 2	110	0
8	5	2S	W 3	140	-1
6	10	2S	W 4	170	-2
10	6	4S	W-1	100	5
7	9	3S	E 3	140	-1
9	7	2S	W 3	140	-1

23

♠ J7
♥ 72
♦ AKJ874
♣ 1052

♠ AK953
♥ 5
♦ Q9
♣ KQJ93

♠ 4
♥ KJ1064
♦ 106532
♣ A6

♠ Q10862
♥ AQ983
♦
♣ 874

Board (23) Av: NS=-220

N-S	E-W	Contract	N-S	E-W	IMP
1	3	3C	W 3	110	3
3	1	2NT	S-3	300	-2
2	4	3C	W 3	110	3
4	2	4S	W-4	400	12
5	8	3S	S-3	300	-2
8	5	3NT	E 3	600	-9
6	10	3NT	E 3	600	-9
10	6	3C	W 4	130	3
7	9	3NT	E-1	100	8
9	7	3D	N-3	300	-2

24

♠ 10532
♥ 1064
♦ KQ87
♣ A9

♠ AJ8
♥ AK3
♦ J96
♣ J1053

♠ Q64
♥ Q8
♦ 10432
♣ 8764

♠ K97
♥ J9752
♦ A5
♣ KQ2

Board (24) Av: NS=+130

N-S	E-W	Contract	N-S	E-W	IMP
1	3	4H	S-1	50	-5
3	1	2H	S 2	110	-1
2	4	1H	S 3	140	0
4	2	2H	S 2	110	-1
5	8	2H	S 2	110	-1
8	5	2H	S 3	140	0
6	10	2H	S 2	110	-1
10	6	1NT	S 3	150	1
7	9	2H	S 3	140	0
9	7	2H	S 3	140	0

25

♠8
♥K10
♦A109874
♣Q876

♠J1063
♥AQ4
♦63
♣K1054

♠KQ72
♥7632
♦KJ2
♣J2

♠A954
♥J985
♦Q5
♣A93

Board (25) Av: NS=+30

N-S	E-W	Contract	N-S	E-W	IMP
1	2	2C S-1		50	-2
2	1	2S W-1	100		2
3	4	2C S 2	90		2
4	3	Passout			-1
5	9	2D N 3	110		2
9	5	2S W 2		110	-4
6	7	1NT N 4	180		4
7	6	2D N-1		50	-2
8	10	Passout			-1
10	8	Passout			-1

26

♠765
♥9753
♦8
♣AKQJ3

♠2
♥QJ6
♦AKQJ1063
♣52

♠J3
♥K42
♦9542
♣10764

♠AKQ10984
♥A108
♦7
♣98

Board (26) Av: NS=+660

N-S	E-W	Contract	N-S	E-W	IMP
1	2	5S S 6	680		1
2	1	4S S 6	680		1
3	4	4S S 6	680		1
4	3	5S S 6	680		1
5	9	5Dx W-2	500		-4
9	5	6S S 6	1430		13
6	7	4D S-6		600	-15
7	6	5S S 6	680		1
8	10	4S S 6	680		1
10	8	4S S 6	680		1

27

♠965
♥KQ974
♦10743
♣3

♠KQ7
♥A853
♦6
♣KJ652

♠J32
♥106
♦KQJ98
♣A87

♠A1084
♥J2
♦A52
♣Q1094

Board (27) Av: NS=-40

N-S	E-W	Contract	N-S	E-W	IMP
1	2	1NT E 3		150	-3
2	1	3NT W-2	100		4
3	4	2NT S-4		200	-4
4	3	2NT W 2		120	-2
5	9	2NT W 2		120	-2
9	5	3NT E-1	50		3
6	7	3NT E 5		460	-9
7	6	3NT E-1	50		3
8	10	3NT W-1	50		3
10	8	3NT W-3	150		5

28

♠Q62
♥AQJ96
♦83
♣1082

♠J10973
♥K102
♦K1097
♣A

♠AK5
♥874
♦AQ4
♣QJ76

♠84
♥53
♦J652
♣K9543

Board (28) Av: NS=-370

N-S	E-W	Contract	N-S	E-W	IMP
1	2	4S W 4		420	-2
2	1	4S W 4		420	-2
3	4	4S W 5		450	-2
4	3	4S W 4		420	-2
5	9	4S W-1	50		9
9	5	4S W 5		450	-2
6	7	4S E 4		420	-2
7	6	4S E-1	50		9
8	10	4S E 4		420	-2
10	8	4S E 4		420	-2

29

♠K108
♥K8753
♦J4
♣J54

♠QJ94
♥J1094
♦A
♣Q732

♠52
♥A62
♦Q10873
♣1098

♠A763
♥Q
♦K9652
♣AK6

Board (29) Av: NS=-30

N-S	E-W	Contract	N-S	E-W	IMP
1	2	1NT N-2		200	-5
2	1	3NT N-2		200	-5
3	4	1NT S 2	120		4
4	3	1NT E 1		90	-2
5	9	3NT N 3	600		12
9	5	3NT S-2		200	-5
6	7	3NT N-3		300	-7
7	6	1NT N 1	90		3
8	10	1NT N 1	90		3
10	8	1NT S 2	120		4

30

♠QJ
♥876
♦J973
♣J1076

♠A432
♥AQ4
♦AK4
♣A82

♠5
♥J1032
♦1082
♣KQ954

♠K109876
♥K95
♦Q65
♣3

Board (30) Av: NS=-450

N-S	E-W	Contract	N-S	E-W	IMP
1	2	3NT W 4		430	1
2	1	3NT W 6		490	-1
3	4	3NT W 4		430	1
4	3	3NT W 3		400	2
5	9	3NT W 5		460	0
9	5	4H E 5		450	0
6	7	4H E 4		420	1
7	6	3NT W 6		490	-1
8	10	3NT W 5		460	0
10	8	3NT W 5		460	0

31

♠963
♥10632
♦A5
♣K762

♠KQ52
♥75
♦J108742
♣5

♠107
♥AKQJ4
♦K9
♣Q1084

♠AJ84
♥98
♦Q63
♣AJ93

Board (31) Av: NS=-120

N-S	E-W	Contract	N-S	E-W	IMP
1	2	2C S-3		300	-5
2	1	1NT N-2		200	-2
3	4	2D W 3		110	0
4	3	3C S-3		300	-5
5	9	3NTxE-2	300		9
9	5	2D E 3		110	0
6	7	1NT E-1	50		5
7	6	2C S-2		200	-2
8	10	1NT N-2		200	-2
10	8	5D W-2	100		6

32

♠J853
♥J3
♦AK98
♣AJ7

♠K10
♥752
♦1063
♣109542

♠A962
♥AQ6
♦752
♣KQ6

♠Q74
♥K10984
♦QJ4
♣83

Board (32) Av: NS=+130

N-S	E-W	Contract	N-S	E-W	IMP
1	2	2H S 2	110		-1
2	1	2C W-1	100		-1
3	4	1NT N 3	150		1
4	3	1NT N 4	180		2
5	9	2H S 3	140		0
9	5	2D N 2	90		-1
6	7	2NT N 3	150		1
7	6	1NT S 2	120		0
8	10	2H S 3	140		0
10	8	1NT E-1	100		-1

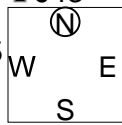
33

♠ Q743
♥ A42
♦ 853
♣ J43

♠ 652
♥ KJ10765
♦ 4
♣ 976

♠ J109
♥
♦ AKQJ97
♣ AK102

♠ AK8
♥ Q983
♦ 1062
♣ Q85



Board (33) Av: NS=+20

N-S	E-W	Contract	N-S	E-W	IMP
1	2	5D E-2	100		2
2	1	3NT E-1	50		1
3	4	3D E 3		110	-4
4	3	3NT E-1	50		1
5	9	3C E-1	50		1
9	5	2S N-2		100	-3
6	7	3D E-1	50		1
7	6	3H W-1	50		1
8	10	3D E 3		110	-4
10	8	4H W-3	150		4

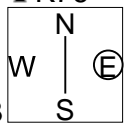
34

♠ Q
♥ AJ872
♦ K642
♣ K76

♠ A543
♥ K4
♦ Q5
♣ QJ1043

♠ K106
♥ Q96
♦ A108
♣ A985

♠ J9872
♥ 1053
♦ J973
♣ 2



Board (34) Av: NS=-350

N-S	E-W	Contract	N-S	E-W	IMP
1	2	3NT E 4		430	-2
2	1	3NT W 4		430	-2
3	4	3NT E 3		400	-2
4	3	3NT E 3		400	-2
5	9	3NT W 5		460	-3
9	5	3C E 5		150	5
6	7	5C E-1	50		9
7	6	2NT W 4		180	5
8	10	3NT W 4		430	-2
10	8	3NT E 3		400	-2

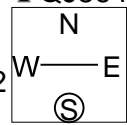
35

♠ J987
♥ A64
♦ A
♣ QJ864

♠ 1052
♥ 1052
♦ Q9642
♣ 53

♠ AKQ6
♥ KQ83
♦ J10
♣ K72

♠ 43
♥ J97
♦ K8753
♣ A109



Board (35) Av: NS=+140

N-S	E-W	Contract	N-S	E-W	IMP
1	2	1NT E-1	100		-1
2	1	2H W-2	200		2
3	4	3C N 3	110		-1
4	3	1NTx E-1	200		2
5	9	1NT E-1	100		-1
9	5	1NTx N 1	180		1
6	7	1NT E-2	200		2
7	6	3C N 3	110		-1
8	10	1NT E 1		90	-6
10	8	1NT N 3	150		0

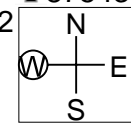
36

♠ 10643
♥ KQ32
♦ 87543
♣ 87543

♠ KQ10532
♥ Q82
♦ 109
♣ KJ

♠ 987
♥ J95
♦ A74
♣ AQ96

♠ AJ64
♥ AK7
♦ J865
♣ 102



Board (36) Av: NS=-20

N-S	E-W	Contract	N-S	E-W	IMP
1	2	3S W 3		140	-3
2	1	3D S-1		100	-2
3	4	4S W-2	200		6
4	3	2S W 4		170	-4
5	9	3S W-1	100		3
9	5	3S W-1	100		3
6	7	1S W 3		140	-3
7	6	1S W 3		140	-3
8	10	3S W-1	100		3
10	8	3S W-1	100		3