

木村六郎杯 OPEN TEAMS Session 1 Flight A 2008年2月23日(土)

1

♠ J10985
♥ 9
♦ QJ7
♣ K982

♠ AKQ43
♥ 83
♦ 642
♣ AJ10

♠ A764
♥ A764
♦ AK853
♣ Q764

♠ 762
♥ KQJ1052
♦ 109
♣ 53

Board (1) Av: NS=-330

N-S	E-W	Contract	N-S	E-W	IMP
1	9 5D	E 5	400		-2
9	1 4S	W 5	450		-3
3	4 3NT	E 3	400		-2
4	3 3NT	E 3	400		-2
5	6 3NT	E 3	400		-2
6	5 3NT	E-1	50		9
7	8 3NT	E-1	50		9
8	7 3NT	E 3	400		-2

2

♠ K832
♥ 1032
♦ 108
♣ J932

♠ AQJ10976
♥ K65
♦ Q5
♣ 6

♠ 4
♥ AJ987
♦ AK43
♣ K54

♠ 5
♥ Q4
♦ J9762
♣ AQ1087

Board (2) Av: NS=-360

N-S	E-W	Contract	N-S	E-W	IMP
1	9 4H	E 4	420		-2
9	1 4H	E 6	480		-3
3	4 4H	E 5	450		-3
4	3 5H	E 6	480		-3
5	6 5H	E 5	450		-3
6	5 4S	E 5	450		-3
7	8 6H	E-2	100		10
8	7 6H	E-2	100		10

3

♠ Q7652
♥ 83
♦ A83
♣ Q83

♠ J9
♥ KQ
♦ 9764
♣ AK642

♠ 83
♥ A10964
♦ Q105
♣ J95

♠ AK104
♥ J752
♦ KJ2
♣ 107

Board (3) Av: NS=+140

N-S	E-W	Contract	N-S	E-W	IMP
1	9 2S	N 3	140		0
9	1 3S	N 3	140		0
3	4 2S	N 3	140		0
4	3 2S	N 3	140		0
5	6 4S	N-1		50	-5
6	5 3S	N 3	140		0
7	8 2S	N 3	140		0
8	7 2S	N 2	110		-1

4

♠ KQJ
♥ Q109542
♦ Q65
♣ 5

♠ 96532
♥ K
♦ A1087
♣ J97

♠ A1087
♥ 76
♦ K432
♣ A62

♠ 4
♥ AJ83
♦ J9
♣ KQ10843

Board (4) Av: NS=+50

N-S	E-W	Contract	N-S	E-W	IMP
1	9 4H	N-2	200		-6
9	1	Passout			-2
3	4 4H	N-1	100		-4
4	3 4H	N 4	620		11
5	6 4H	N-2	200		-6
6	5 3S	W 3	140		-5
7	8 4H	N 5	650		12
8	7 3H	N 3	140		3

5

♠ 43
♥ K85
♦ A973
♣ AK76

♠ AK65
♥ 42
♦ KJ8
♣ Q1085

♠ 10872
♥ A1096
♦ Q1064
♣ J

♠ QJ9
♥ QJ73
♦ 52
♣ 9432

Board (5) Av: NS=-110

N-S	E-W	Contract	N-S	E-W	IMP
1	9 2C	N-1	100		0
9	1 4S	E-1	50		4
3	4 2S	E 4	170		-2
4	3 2D	E-1	50		4
5	6 2S	E 3	140		-1
6	5 2S	W 3	140		-1
7	8 2S	E 3	140		-1
8	7 2S	E 4	170		-2

6

♠ 2
♥ K109742
♦ A84
♣ AQ2

♠ KQ8765
♥ 3
♦ 95
♣ J984

♠ 93
♥ A85
♦ Q107632
♣ 73

♠ AJ104
♥ QJ6
♦ KJ
♣ K1065

Board (6) Av: NS=+650

N-S	E-W	Contract	N-S	E-W	IMP
1	9 4H	S 6	480		-5
9	1 6H	S 6	980		8
3	4 4H	S 6	480		-5
4	3 6H	S 6	980		8
5	6 6H	S 6	980		8
6	5 5H	S 6	480		-5
7	8 4H	S 6	480		-5
8	7 4H	S 6	480		-5

7

♠ 94
♥ AKQ1062
♦ A9842
♣

♠ Q1076
♥ J
♦ Q103
♣ 109764

♠ K852
♥ 9743
♦ J75
♣ 83

♠ AJ3
♥ 85
♦ K6
♣ AKQJ52

Board (7) Av: NS=+1450

N-S	E-W	Contract	N-S	E-W	IMP
1	9 6H	N 7	1460		0
9	1 7HxxS	7	2940		16
3	4 6C	S 6	1370		-2
4	3 6H	N 7	1460		0
5	6 6NT	S 7	1470		1
6	5 6NT	S 7	1470		1
7	8 6C	S-1	100		-17
8	7 6H	N 7	1460		0

8

♠ KQ64
♥ AJ43
♦ K652
♣ 4

♠ AJ
♥ 8
♦ Q7
♣ AKQ87532

♠ 10852
♥ 10752
♦ AJ103
♣ J

♠ 973
♥ KQ96
♦ 984
♣ 1096

Board (8) Av: NS=-380

N-S	E-W	Contract	N-S	E-W	IMP
1	9 3NT	W 3	400		-1
9	1 5Cx	W 5	550		-5
3	4 3NT	E 3	400		-1
4	3 3NT	W 3	400		-1
5	6 3NT	W 4	430		-2
6	5 3NT	W 3	400		-1
7	8 3C	W 6	170		5
8	7 1NT	W 7	270		3

9

♠ J8632 ♠ KQ9
♥ A1073 ♥ K854
♦ J43 ♦ AQ
♣ 10 ♣ 9872

♠ A10754
♥ Q92
♦ K109
♣ 43

W — E
S

10

♠ QJ104 ♠ K765
♥ AQ ♥ KJ9
♦ QJ1095 ♦ 7
♣ J4 ♣ A10853

♠ 98 ♠ A32
♥ 10642 ♥ 8753
♦ K62 ♦ A843
♣ Q972 ♣ K6

W — E
S

11

♠ 987 ♠ A2
♥ KQ1032 ♥ AJ96
♦ Q2 ♦ AKJ10
♣ 983 ♣ A74

♠ Q106 ♠ KJ543
♥ 75 ♥ 84
♦ 9874 ♦ 653
♣ K1052 ♣ QJ6

W — E
S

12

♠ Q106 ♠ 875
♥ 1098 ♥ 75
♦ AQ2 ♦ J5
♣ A865 ♣ KQJ942

♠ AKJ932 ♠ 4
♥ J4 ♥ AKQ632
♦ K43 ♦ 109876
♣ 103 ♣ 7

W — E
S

Board (9) Av: NS=+90

N-S	E-W	Contract	N-S	E-W	IMP
1	9	2C	N 4	130	1
9	1	2C	N 4	130	1
3	4	2C	N 4	130	1
4	3	3C	S 4	130	1
5	6	2H	W 2	110	-5
6	5	2C	N 5	150	2
7	8	2C	N 5	150	2
8	7	2S	S-3	150	-6

Board (10) Av: NS=0

N-S	E-W	Contract	N-S	E-W	IMP
1	9	3D	S 4	130	4
9	1	2D	N 5	150	4
3	4	4S	N-1	100	-3
4	3	3NT	S-4	400	-9
5	6	3NT	N 3	600	12
6	5	3NT	N-1	100	-3
7	8	3D	S 3	110	3
8	7	3NT	S-2	200	-5

Board (11) Av: NS=-450

N-S	E-W	Contract	N-S	E-W	IMP
1	9	3NT	E 3	400	2
9	1	3NT	E 5	460	0
3	4	3NT	E 4	430	1
4	3	3NT	E 5	460	0
5	6	3NT	E 5	460	0
6	5	3NT	E 4	430	1
7	8	3NT	E 6	490	-1
8	7	3NT	E 5	460	0

Board (12) Av: NS=+580

N-S	E-W	Contract	N-S	E-W	IMP
1	9	4S	W-4	200	-9
9	1	5H	S 5	650	2
3	4	4H	S 5	650	2
4	3	4Sx	W-4	800	6
5	6	5H	S 5	650	2
6	5	4H	S 5	650	2
7	8	4H	S 5	650	2
8	7	2S	W 2	110	-12

13

♠ J104 ♠ 753
♥ AQ ♥ 10874
♦ KJ42 ♦ Q7
♣ KQ95 ♣ AJ76

♠ KQ96 ♠ A82
♥ J63 ♥ K952
♦ 9653 ♦ A108
♣ 102 ♣ 843

W — E
S

14

♠ AJ762 ♠ Q1093
♥ J104 ♥ K952
♦ 64 ♦ 1032
♣ 862 ♣ Q9

♠ 4 ♠ K85
♥ AQ63 ♥ 87
♦ 875 ♦ AKQJ9
♣ AJ1073 ♣ K54

W — E
S

15

♠ 9842 ♠ KQJ1086
♥ KQJ6 ♥ A10532
♦ Q10874 ♣ A2

♠ 54 ♠ A9732
♥ KQ107653 ♥ AJ
♦ 874 ♦ 9
♣ 3 ♣ KJ965

W — E
S

16

♠ 987 ♠ K105
♥ KJ10987 ♥ 64
♦ 10 ♦ AKQ92
♣ K108 ♣ J62

♠ AJ643 ♠ Q2
♥ 2 ♥ AQ53
♦ 873 ♦ J654
♣ Q754 ♣ A93

W — E
S

Board (13) Av: NS=+630

N-S	E-W	Contract	N-S	E-W	IMP
1	9	3NT	N 4	630	0
9	1	3NT	N 4	630	0
3	4	3NT	N-1	100	-12
4	3	3NT	N 4	630	0
5	6	3NT	N 4	630	0
6	5	3NT	N 4	630	0
7	8	3NT	N 3	600	-1
8	7	3NT	N 4	630	0

Board (14) Av: NS=-30

N-S	E-W	Contract	N-S	E-W	IMP
1	9	3D	N-1	50	-1
9	1	3H	E 3	140	-3
3	4	2S	S 2	110	4
4	3	4H	E-1	50	2
5	6	2S	S-1	50	-1
6	5	2S	S-1	50	-1
7	8	2S	S-1	50	-1
8	7	2S	S-1	50	-1

Board (15) Av: NS=+250

N-S	E-W	Contract	N-S	E-W	IMP
1	8	5Cx	S 5	750	11
8	1	3H	W-1	50	-5
2	5	4H	W-3	150	-3
5	2	3H	W-2	100	-4
3	9	3H	W-2	100	-4
9	3	3H	W-1	50	-5
4	7	5Hx	W-3	500	6
7	4	5C	S 5	600	8

Board (16) Av: NS=-70

N-S	E-W	Contract	N-S	E-W	IMP
1	8	4S	W 4	620	-11
8	1	4H	N-1	50	1
2	5	4H	S-1	50	1
5	2	4H	N-1	50	1
3	9	4H	N-1	50	1
9	3	3S	W 3	140	-2
4	7	4H	N-1	50	1
7	4	3H	N 4	170	6

17

♠QJ8
♥87
♦Q1082
♣Q642

♠K105
♥963
♦A543
♣J109

♠A97
♥KQJ10
♦J97
♣AK3

♠6432
♥A542
♦K6
♣875

18

♠K62
♥K83
♦K53
♣8765

♠AJ43
♥A
♦J984
♣10943

♠Q1097
♥Q10962
♦762
♣A

♠85
♥J754
♦AQ10
♣KQJ2

19

♠J10986
♥KQ73
♦K2
♣AJ

♠Q2
♥108642
♦Q103
♣853

♠A53
♥A9
♦8
♣KQ109642

♠K74
♥J5
♦AJ97654
♣7

20

♠QJ4
♥K8754
♦Q2
♣963

♠K8
♥Q
♦87654
♣KQ1087

♠A10753
♥A10
♦AK109
♣54

♠962
♥J9632
♦J3
♣AJ2

Board (17) Av: NS=-410

N-S	E-W	Contract	N-S	E-W	IMP
1	8	3NT W 3		400	0
8	1	3NT E 3		400	0
2	5	3NT E 3		400	0
5	2	3NT E 3		400	0
3	9	3NT E-1 50			10
9	3	3NT W 5		460	-2
4	7	3NT E 3		400	0
7	4	3NT W 4		430	-1

Board (18) Av: NS=-10

N-S	E-W	Contract	N-S	E-W	IMP
1	8	1NT N 2 120			4
8	1	2S W 2 110			-3
2	5	3S W 3 140			-4
5	2	2S W 3 140			-4
3	9	1NT N 2 120			4
9	3	1NT N 2 120			4
4	7	2S E-1 50			2
7	4	2S W 2 110			-3

Board (19) Av: NS=+160

N-S	E-W	Contract	N-S	E-W	IMP
1	8	4C E-1 100			-2
8	1	4S N 4 420			6
2	5	4S N 4 420			6
5	2	3NT N-4 200			-8
3	9	4S N-2 100			-6
9	3	4H W-3 300			4
4	7	3D S 3 110			-2
7	4	3D S 4 130			-1

Board (20) Av: NS=-660

N-S	E-W	Contract	N-S	E-W	IMP
1	8	3NT W 6 690			-1
8	1	4S E 4 620			1
2	5	5D W 6 620			1
5	2	3NT W 6 690			-1
3	9	3NT W 6 690			-1
9	3	5D E 6 620			1
4	7	5D E 6 620			1
7	4	3NT W 6 690			-1

21

♠K752
♥AQ82
♦96
♣J94

♠A96
♥KJ543
♦KQ10
♣K6

♠QJ104
♥10976
♦43
♣A32

♠83
♥
♦AJ8752
♣Q10875

22

♠Q
♥876532
♦4
♣K9765

♠K6
♥A104
♦AJ102
♣AJ83

♠A1098732
♥Q9
♦Q9
♣42

♠J54
♥KJ
♦K87653
♣Q10

23

♠A973
♥QJ2
♦K93
♣732

♠J64
♥A765
♦J8765
♣K

♠Q1085
♥K98
♦AQ10
♣A85

♠K2
♥1043
♦42
♣QJ10964

24

♠A982
♥AJ
♦AQ74
♣873

♠KJ107
♥K2
♦932
♣10965

♠Q643
♥10873
♦J85
♣A4

♠5
♥Q9654
♦K106
♣KQJ2

Board (21) Av: NS=+10

N-S	E-W	Contract	N-S	E-W	IMP
1	8	2H W 3 140			-4
8	1	4S W-1 50			1
2	5	4Hx W-1 100			3
5	2	3C N-1 100			-3
3	9	4Hx W-1 100			3
9	3	3H W 3 140			-4
4	7	4Hx W-1 100			3
7	4	4H W-1 50			1

Board (22) Av: NS=-660

N-S	E-W	Contract	N-S	E-W	IMP
1	8	4S E 5 650			0
8	1	4S W 6 680			-1
2	5	4S W 5 650			0
5	2	4S W 6 680			-1
3	9	4S E 5 650			0
9	3	4S E 5 650			0
4	7	4S E 6 680			-1
7	4	4S E 5 650			0

Board (23) Av: NS=-460

N-S	E-W	Contract	N-S	E-W	IMP
1	8	3S E 4 170			7
8	1	3NT E 4 630			-5
2	5	3NT E 4 630			-5
5	2	3NT E 3 600			-4
3	9	3NT E 3 600			-4
9	3	3NT E 4 630			-5
4	7	3NT E-1 100			11
7	4	2NT E 2 120			8

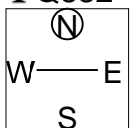
Board (24) Av: NS=+440

N-S	E-W	Contract	N-S	E-W	IMP
1	8	3NT N 5 460			1
8	1	3NT N 4 430			0
2	5	3NT N 3 400			-1
5	2	3NT N 5 460			1
3	9	3NT N 6 490			2
9	3	3NT N 4 430			0
4	7	3NT N 4 430			0
7	4	3NT N 3 400			-1

25

♠AQ63
♥Q
♦Q874
♣Q832

♠K108542
♥A9863
♦J5
♣



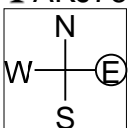
♠9
♥KJ1075
♦96
♣AK1095

♠J7
♥42
♦AK1032
♣J764

26

♠J32
♥A985
♦5
♣AKJ76

♠K1085
♥Q643
♦K9
♣1053



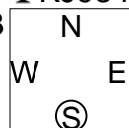
♠A976
♥K2
♦J10872
♣92

♠Q4
♥J107
♦AQ643
♣Q84

27

♠A94
♥A3
♦AK
♣KJ9843

♠K10653
♥105
♦J64
♣1062



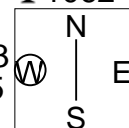
♠J872
♥KQ9872
♦Q98
♣

♠Q
♥J64
♦107532
♣AQ75

28

♠A86
♥9872
♦A82
♣1062

♠QJ
♥A10543
♦J10975
♣4



♠K1097543
♥K6
♦
♣AKJ5

♠2
♥QJ
♦KQ643
♣Q9873

Board (25) Av: NS=-450

N-S	E-W	Contract	N-S	E-W	IMP
1	8	4H W 4	620		-5
8	1	5H E 5	650		-5
2	5	5H W-1 100			11
5	2	4H W 4	620		-5
3	9	4H E 4	620		-5
9	3	4H E 4	620		-5
4	7	5D S-2	100		8
7	4	5Dx S-1	100		8

Board (26) Av: NS=+360

N-S	E-W	Contract	N-S	E-W	IMP
1	8	3D S-3	300		-12
8	1	1NT N 2 120			-6
2	5	3NT S 3 600			6
5	2	3NT S 3 600			6
3	9	3C N 3 110			-6
9	3	3NT S 3 600			6
4	7	3NT S 3 600			6
7	4	1NT S 2 120			-6

Board (27) Av: NS=+460

N-S	E-W	Contract	N-S	E-W	IMP
1	8	3NT N 6 490			1
8	1	3NT N 5 460			0
2	5	3NT N 6 490			1
5	2	3NT N 4 430			-1
3	9	3NT N 6 490			1
9	3	3NT N 5 460			0
4	7	5C S 7 440			-1
7	4	5C N 6 420			-1

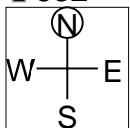
Board (28) Av: NS=-430

N-S	E-W	Contract	N-S	E-W	IMP
1	8	6H W-2 100			11
8	1	4S E 6 480			-2
2	5	4S W 6 480			-2
5	2	4S E 6 480			-2
3	9	4S E 5 450			-1
9	3	4S E 6 480			-2
4	7	1S E 6 230			5
7	4	4S E 6 480			-2

29

♠65
♥AJ972
♦Q64
♣632

♠K10987
♥
♦J932
♣AK104



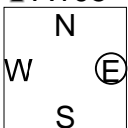
♠32
♥Q10653
♦K1085
♣Q9

♠AQJ4
♥K84
♦A7
♣J875

30

♠62
♥AKQ7
♦KJ73
♣A105

♠KQ74
♥842
♦Q9
♣KQ82



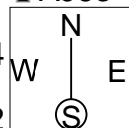
♠J53
♥J653
♦1065
♣J43

♠A1098
♥109
♦A842
♣976

31

♠5
♥A653
♦KJ98
♣AJ63

♠104
♥10974
♦Q63
♣10752



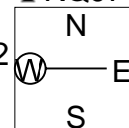
♠J762
♥KQJ2
♦A5
♣K84

♠AKQ983
♥8
♦10742
♣Q9

32

♠K632
♥863
♦87
♣KQJ7

♠AJ
♥AKQJ92
♦A5
♣A43



♠Q954
♥4
♦1096432
♣108

♠1087
♥1075
♦KQJ
♣9652

Board (29)

N-S	E-W	Contract	N-S	E-W	IMP
2	6	3H N-2	200		
6	2	2NT S-1	100		

Board (30)

N-S	E-W	Contract	N-S	E-W	IMP
2	6	3NT N 3 400			
6	2	3NT N 4 430			

Board (31)

N-S	E-W	Contract	N-S	E-W	IMP
2	6	4S S 4 620			
6	2	3NT N-1 100			

Board (32)

N-S	E-W	Contract	N-S	E-W	IMP
2	6	4H E-1 100			
6	2	3NT W 3 600			

木村六郎杯 OPEN TEAMS Session 1 Flight A 2008年2月23日(土)

33

♠K8652
♥A74
♦K10
♣765

♠103
♥J852
♦AQ543
♣J10

♠QJ
♥Q1096
♦862
♣A843

♠A974
♥K3
♦J97
♣KQ92

34

♠AJ
♥KQ6
♦K976
♣K632

♠1072
♥J952
♦Q10
♣Q975

♠K863
♥A104
♦A853
♣84

♠Q954
♥873
♦J42
♣AJ10

35

♠A843
♥A1092
♦J5
♣Q83

♠Q6
♥KQ4
♦AK1064
♣J95

♠KJ9
♥863
♦932
♣A1064

♠10752
♥J75
♦Q87
♣K72

36

♠K103
♥AK8
♦762
♣J432

♠QJ7
♥9
♦AK43
♣AK865

♠5
♥QJ10643
♦QJ105
♣Q7

♠A98642
♥752
♦98
♣109

Board (33)

N-S	E-W	Contract	N-S	E-W	IMP
2	6	2S	N 5	200	
6	2	4S	N 5	450	

Board (34)

N-S	E-W	Contract	N-S	E-W	IMP
2	6	1NT	N 2	120	
6	2	3NT	N-2	200	

Board (35)

N-S	E-W	Contract	N-S	E-W	IMP
2	6	3NT	W-2	200	
6	2	3NT	W-1	100	

Board (36)

N-S	E-W	Contract	N-S	E-W	IMP
2	6	3NT	W-1	100	
6	2	4H	E 4	620	

37

♠AK9
♥AJ105
♦106
♣J932

♠J108764
♥864
♦95
♣K7

♠2
♥Q932
♦AQ83
♣AQ105

♠Q53
♥K7
♦KJ742
♣864

38

♠AK10432
♥A4
♦KQ
♣1096

♠QJ95
♥72
♦AJ1086
♣32

♠86
♥K863
♦92
♣AQJ87

♠7
♥QJ1095
♦7543
♣K54

39

♠A1052
♥Q92
♦Q853
♣K5

♠J8764
♥AJ7
♦J7
♣A98

♠93
♥K1064
♦AK62
♣J62

♠KQ
♥853
♦1094
♣Q10743

40

♠98
♥J10975
♦942
♣874

♠Q53
♥KQ8
♦A653
♣QJ6

♠7
♥A6432
♦QJ8
♣A1093

♠AKJ10642
♥
♦K107
♣K52

Board (37)

N-S	E-W	Contract	N-S	E-W	IMP
2	6	1NT	S 2	120	
6	2	2S	W-1	50	

Board (38)

N-S	E-W	Contract	N-S	E-W	IMP
2	6	3H	S-1	50	
6	2	3S	N-1	50	

Board (39)

N-S	E-W	Contract	N-S	E-W	IMP
2	6	Passout			
6	2	1NT	S-1	100	

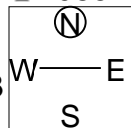
Board (40)

N-S	E-W	Contract	N-S	E-W	IMP
2	6	4Sx	S-2	300	
6	2	4Hx	E-1	100	

41

♠ Q752
♥ J104
♦ QJ6
♣ 1085

♠ 9
♥ 96
♦ K109753
♣ AK62



♠ J8
♥ AK875
♦ 84
♣ Q974

♠ AK10643
♥ Q32
♦ A2
♣ J3

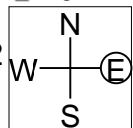
Board (41)

N-S	E-W	Contract	N-S	E-W	IMP
2	6	3S	S 3	140	
6	2	3S	S-2	100	

42

♠ 652
♥ KJ975
♦ 103
♣ KJ2

♠ A104
♥ Q8432
♦ K8
♣ 1043



♠ 8
♥ 106
♦ AJ97652
♣ 965

♠ KQJ973
♥ A
♦ Q4
♣ AQ87

Board (42)

N-S	E-W	Contract	N-S	E-W	IMP
2	6	4S	S 5	650	
6	2	4S	S 5	650	

木村六郎杯 OPEN TEAMS Session 2 Flight A 2008年2月23日(土)

1

♠ Q973
♥ 1098
♦ AKJ2
♣ 95

♠ K64
♥ 53
♦ 86
♣ AKQJ107

♠ J2
♥ AKQJ
♦ Q543
♣ 832

♠ A1085
♥ 7642
♦ 1097
♣ 64

2

♠ 863
♥ 986
♦ K9875
♣ 74

♠ 1052
♥ Q542
♦ J42
♣ 952

♠ AKQ4
♥ 7
♦ A63
♣ AKJ86

♠ J97
♥ AKJ103
♦ Q10
♣ Q103

3

♠ 8643
♥ AJ5
♦ A7652
♣ J

♠ KQJ72
♥ K9
♦ 4
♣ Q10652

♠ A5
♥ 8432
♦ J8
♣ AK843

♠ 109
♥ Q1076
♦ KQ1093
♣ 97

4

♠ 764
♥ 8
♦ 962
♣ A109763

♠ KQJ932
♥ Q932
♦
♣ QJ8

♠ A
♥ AJ75
♦ AJ8543
♣ K5

♠ 1085
♥ K1064
♦ KQ107
♣ 42

Board (1) Av: NS=-310

N-S	E-W	Contract	N-S	E-W	IMP
1	7	3NT W-1	50		8
7	1	3NT W 4		430	-3
2	4	3NT E 5		460	-4
4	2	3C W 4		130	5
5	8	3NT W 4		430	-3
8	5	3NT E-1	50		8
6	9	3NT E 4		430	-3
9	6	3NT W 5		460	-4

Board (2) Av: NS=+20

N-S	E-W	Contract	N-S	E-W	IMP
1	7	3NT W-1	50		1
7	1	3NT W-3	150		4
2	4	2S E 3		140	-4
4	2	3NT W-1	50		1
5	8	3NT W-1	50		1
8	5	4S W-1	50		1
6	9	1S E 3		140	-4
9	6	3NT W-1	50		1

Board (3) Av: NS=-370

N-S	E-W	Contract	N-S	E-W	IMP
1	7	5Dx S-1	100		7
7	1	4S W 4		620	-6
2	4	4S W 4		620	-6
4	2	5Dx S-1	100		7
5	8	3C W 5		150	6
8	5	5C E 5		600	-6
6	9	4C W 5		150	6
9	6	5C E 5		600	-6

Board (4) Av: NS=-400

N-S	E-W	Contract	N-S	E-W	IMP
1	7	5H E 5		650	-6
7	1	4H W 5		650	-6
2	4	4H W-1	100		11
4	2	5H W 5		650	-6
5	8	5H E-1	100		11
8	5	4H W 4		620	-6
6	9	5H W-1	100		11
9	6	4S W 5		650	-6

5

♠ AJ104
♥ K872
♦ AKQ6
♣ J

♠ K95
♥ 9654
♦ 974
♣ AQ8

♠ Q7
♥ AQJ103
♦ 53
♣ 10432

♠ 8632
♥
♦ J1082
♣ K9765

6

♠ 10543
♥ AJ8
♦ A8642
♣ J

♠ AK8
♥ 52
♦ 95
♣ A97654

♠ J97
♥ K43
♦ QJ1073
♣ K2

♠ Q62
♥ Q10976
♦ K
♣ Q1083

7

♠ Q7
♥ 10865
♦ KJ104
♣ Q98

♠ A86
♥ AQ2
♦ 632
♣ 10543

♠ K42
♥ 97
♦ AQ875
♣ KJ6

♠ J10953
♥ KJ43
♦ 9
♣ A72

8

♠ KQ654
♥ AK
♦ K84
♣ QJ7

♠ 72
♥ 10543
♦ J952
♣ 1082

♠ 10
♥ QJ97
♦ AQ10
♣ AK543

♠ AJ983
♥ 862
♦ 763
♣ 96

Board (5) Av: NS=+380

N-S	E-W	Contract	N-S	E-W	IMP
1	7	4Hx E-3	500		3
7	1	4S N 4	620		6
2	4	4S S 4	620		6
4	2	3D N 4	130		-6
5	8	4Hx E-2	300		-2
8	5	4S S-1		100	-10
6	9	1D N 3	110		-7
9	6	4S N 4	620		6

Board (6) Av: NS=-20

N-S	E-W	Contract	N-S	E-W	IMP
1	7	Passout			1
7	1	3H S-2		100	-2
2	4	2H S 2	110		4
4	2	1NT E 1		90	-2
5	8	3C W-1	100		3
8	5	3C W 4		130	-3
6	9	2H S 2	110		4
9	6	3C W 3		110	-3

Board (7) Av: NS=-100

N-S	E-W	Contract	N-S	E-W	IMP
1	7	2H N-1	100		0
7	1	1NT W 1		90	0
2	4	1NT W 1		90	0
4	2	1NT W 2		120	-1
5	8	1NT W 2		120	-1
8	5	1NT W 1		90	0
6	9	1NT W 2		120	-1
9	6	1NT W 1		90	0

Board (8) Av: NS=-10

N-S	E-W	Contract	N-S	E-W	IMP
1	7	4H W-1	50		2
7	1	5D W-3	150		4
2	4	4S N-1		50	-1
4	2	4Hx W 4		590	-11
5	8	4Sx N 4	590		12
8	5	4Sx N-1		100	-3
6	9	4S N-1		50	-1
9	6	4S N-1		50	-1

9

♠AKQ854
♥A6
♦Q10
♣J75

♠7
♥K85
♦AK954
♣KQ92

♠J10632
♥J94
♦863
♣A10

♠9
♥Q10732
♦J72
♣8643

10

♠J1043
♥62
♦AJ6
♣J543

♠K
♥AJ98
♦KQ754
♣A109

♠A9765
♥K105
♦98
♣Q86

♠Q82
♥Q743
♦1032
♣K72

11

♠1062
♥J10982
♦K
♣J1098

♠AJ
♥A643
♦AJ2
♣5432

♠Q9843
♥KQ7
♦98
♣A76

♠K75
♥5
♦Q1076543
♣KQ

12

♠AKJ2
♥AK742
♦QJ6
♣J

♠987
♥Q105
♦AK1093
♣Q4

♠Q4
♥J986
♦42
♣AK762

♠10653
♥3
♦875
♣109853

Board (9) Av: NS=-90

N-S	E-W	Contract	N-S	E-W	IMP
1	7	1Sx	N 1	160	6
7	1	3S	N-2	100	0
2	4	2S	N-2	100	0
4	2	2S	N-1	50	1
5	8	2Sx	N-1	100	0
8	5	2Sx	N-2	300	-5
6	9	2S	N-2	100	0
9	6	3S	N-2	100	0

Board (10) Av: NS=-630

N-S	E-W	Contract	N-S	E-W	IMP
1	7	3NT	E 3	600	1
7	1	3NT	E 3	600	1
2	4	3NT	W 4	630	0
4	2	3NT	W 5	660	-1
5	8	3NT	W 5	660	-1
8	5	3NT	E 4	630	0
6	9	3NT	W-1	100	12
9	6	3NT	W 6	690	-2

Board (11) Av: NS=-260

N-S	E-W	Contract	N-S	E-W	IMP
1	7	3NT	E 3	400	-4
7	1	3NT	W 3	400	-4
2	4	3NT	W-1	50	7
4	2	2Dx	S-1	100	4
5	8	2Dx	S-1	100	4
8	5	3NT	W 3	400	-4
6	9	3NT	W 3	400	-4
9	6	2NT	W 3	150	3

Board (12) Av: NS=+70

N-S	E-W	Contract	N-S	E-W	IMP
1	7	2D	W-2	100	1
7	1	4C	E-3	150	2
2	4	2S	N 3	140	2
4	2	2NT	W-1	50	-1
5	8	3S	S-1	100	-5
8	5	2NTxN-1		200	-7
6	9	1NT	W-1	50	-1
9	6	2NTxW-2	300		6

13

♠QJ63
♥Q1082
♦J8
♣A83

♠A2
♥76
♦Q973
♣J7654

♠95
♥AJ953
♦K4
♣Q1092

♠K10874
♥K4
♦A10652
♣K

14

♠A5
♥AQ10
♦J9652
♣AJ3

♠10872
♥4
♦K74
♣108654

♠6
♥K7653
♦Q8
♣KQ972

♠KQJ943
♥J982
♦A103
♣

15

♠Q97
♥AQJ103
♦109
♣Q65

♠8654
♥K98
♦7
♣AJ982

♠AKJ2
♥7654
♦AQ842
♣

♠103
♥2
♦KJ653
♣K10743

16

♠A87
♥KJ9842
♦732
♣7

♠J65
♥Q73
♦10865
♣864

♠109432
♥5
♦AQ
♣KQJ105

♠KQ
♥A106
♦KJ94
♣A932

Board (13) Av: NS=+620

N-S	E-W	Contract	N-S	E-W	IMP
1	7	4S	S 4	620	0
7	1	4S	S 4	620	0
2	4	4S	S 4	620	0
4	2	4S	S 4	620	0
5	8	4S	S 4	620	0
8	5	4S	S 4	620	0
6	9	4S	S 4	620	0
9	6	4S	S 4	620	0

Board (14) Av: NS=+220

N-S	E-W	Contract	N-S	E-W	IMP
1	7	3NT	N 5	460	6
7	1	6S	S-1	50	-7
2	4	6S	S-1	50	-7
4	2	5S	S 5	450	6
5	8	3NT	N 5	460	6
8	5	4S	S 5	450	6
6	9	6S	S-1	50	-7
9	6	3C	E-1	50	-5

Board (15) Av: NS=+110

N-S	E-W	Contract	N-S	E-W	IMP
1	6	4S	W-3	150	1
6	1	2D	E-3	150	1
2	7	2D	E-3	150	1
7	2	2S	E 2	110	-6
3	5	2D	E-1	50	-2
5	3	4S	W-2	100	0
4	9	3S	E-2	100	0
9	4	4S	E-2	100	0

Board (16) Av: NS=+470

N-S	E-W	Contract	N-S	E-W	IMP
1	6	4H	N 6	480	0
6	1	4H	N 5	450	-1
2	7	4H	S 5	450	-1
7	2	4H	N 5	450	-1
3	5	4H	N 6	480	0
5	3	4H	N 6	480	0
4	9	3NT	S 6	490	1
9	4	4H	S 5	450	-1

17

♠A1043
♥J5
♦AJ3
♣AK75

♠9
♥A107
♦KQ64
♣J9863

♠KQ65
♥Q8642
♦10
♣1042

♠J872
♥K93
♦98752
♣Q

18

♠KJ7
♥AK43
♦KQ752
♣4

♠AQ852
♥J
♦A43
♣10652

♠9643
♥106
♦J10
♣AKJ73

♠10
♥Q98752
♦986
♣Q98

19

♠AJ8
♥J5
♦10985
♣A982

♠9653
♥AK83
♦QJ2
♣106

♠KQ74
♥962
♦A3
♣K743

♠102
♥Q1074
♦K764
♣QJ5

20

♠Q9
♥J102
♦KQ72
♣AKJ8

♠85
♥7
♦AJ10986
♣10732

♠K642
♥KQ853
♦5
♣964

♠AJ1073
♥A964
♦43
♣Q5

Board (17) Av: NS=-20

N-S	E-W	Contract	N-S	E-W	IMP
1	6	2S	N 3	140	4
6	1	1NT	N 2	120	4
2	7	3H	E-3	150	5
7	2	4S	S-4	200	-5
3	5	3S	S-2	100	-2
5	3	4S	S-3	150	-4
4	9	3S	S-1	50	-1
9	4	4S	S-2	100	-2

Board (18) Av: NS=+100

N-S	E-W	Contract	N-S	E-W	IMP
1	6	3S	W-2	100	0
6	1	2S	W 2	110	-5
2	7	3S	W-1	50	-2
7	2	3S	W-1	50	-2
3	5	4Sx	W-2	300	5
5	3	3S	W-1	50	-2
4	9	4H	S 4	620	11
9	4	3S	W-1	50	-2

Board (19) Av: NS=-120

N-S	E-W	Contract	N-S	E-W	IMP
1	6	3S	E 3	140	-1
6	1	1NT	N-1	50	2
2	7	1NT	N 1	90	5
7	2	3S	E 3	140	-1
3	5	2S	E 3	140	-1
5	3	1NT	E 3	150	-1
4	9	1NT	E 2	120	0
9	4	2S	W 3	140	-1

Board (20) Av: NS=+660

N-S	E-W	Contract	N-S	E-W	IMP
1	6	4NT	N 5	660	0
6	1	3NT	N 5	660	0
2	7	3NT	N 5	660	0
7	2	3NT	N 5	660	0
3	5	3NT	N 5	660	0
5	3	3NT	N 5	660	0
4	9	3NT	N 5	660	0
9	4	3NT	N 5	660	0

21

♠AJ7
♥942
♦1087
♣A865

♠10853
♥K763
♦K54
♣102

♠Q42
♥AQJ
♦AQ632
♣Q9

♠K96
♥1085
♦J9
♣KJ743

22

♠AKQ1094
♥873
♦9
♣Q73

♠J752
♥62
♦AQ1086
♣102

♠AKQ954
♥743
♣AK85

♠863
♥J10
♦KJ52
♣J964

23

♠8
♥K9865
♦KQJ6
♣1063

♠KQ10762
♥Q7
♦A3
♣KQ7

♠94
♥1032
♦109874
♣J82

♠AJ53
♥AJ4
♦52
♣A954

24

♠AQ2
♥Q6
♦KQ86
♣AKJ5

♠J853
♥A853
♦J42
♣74

♠K94
♥KJ104
♦A95
♣1032

♠1076
♥972
♦1073
♣Q986

Board (21) Av: NS=+40

N-S	E-W	Contract	N-S	E-W	IMP
1	6	1NT	E 1	90	-4
6	1	1NT	E-1	50	0
2	7	1NT	E-2	100	2
7	2	1NT	E-1	50	0
3	5	2NT	E 3	150	-5
5	3	1NT	E-1	50	0
4	9	1NT	E-2	100	2
9	4	1NT	E-2	100	2

Board (22) Av: NS=-680

N-S	E-W	Contract	N-S	E-W	IMP
1	6	4H	E 5	650	1
6	1	4H	E 5	650	1
2	7	4H	E 6	680	0
7	2	4Sx	N-4	800	-3
3	5	4H	E 7	710	-1
5	3	4H	E 6	680	0
4	9	3S	N-3	150	11
9	4	4H	E 7	710	-1

Board (23) Av: NS=+260

N-S	E-W	Contract	N-S	E-W	IMP
1	6	4H	N-1	100	-8
6	1	4H	N 4	620	8
2	7	4H	S 4	620	8
7	2	3H	N 3	140	-3
3	5	4H	S 4	620	8
5	3	2S	W-1	100	-4
4	9	4H	N-1	100	-8
9	4	3H	S 4	170	-3

Board (24) Av: NS=-10

N-S	E-W	Contract	N-S	E-W	IMP
1	6	2NT	N-1	50	-1
6	1	2NT	N-1	50	-1
2	7	2NT	N 3	150	4
7	2	2NT	N-3	150	-4
3	5	2NT	N-2	100	-3
5	3	2NT	N 2	120	4
4	9	2NT	N 2	120	4
9	4	3NT	N-2	100	-3

木村六郎杯 OPEN TEAMS Session 2 Flight A 2008年2月23日(土)

25

♠103
♥10
♦J983
♣AK8752

♠KQ5
♥985
♦K1054
♣943

♠AJ87
♥AQ63
♦Q72
♣Q10

♠9642
♥KJ742
♦A6
♣J6

26

♠64
♥AQ10976
♦K105
♣Q5

♠973
♥J853
♦AJ87
♣98

♠AQ1052
♥
♦Q32
♣AKJ74

♠KJ8
♥K42
♦964
♣10632

27

♠1065
♥KJ1073
♦6
♣K1096

♠A
♥642
♦A954
♣A5432

♠KQJ32
♥Q9
♦KQJ108
♣7

♠9874
♥A85
♦732
♣QJ8

28

♠J73
♥72
♦AK982
♣J97

♠Q98
♥Q965
♦J105
♣KQ6

♠A642
♥AKJ8
♦Q73
♣53

♠K105
♥1043
♦64
♣A10842

Board (25) Av: NS=+130

N-S	E-W	Contract	N-S	E-W	IMP
1	6	2S	N-1	50	-5
6	1	1NT	E 3	150	-7
2	7	2S	W-1	100	-1
7	2	2Cx	S-1	100	-6
3	5	3H	E-2	200	2
5	3	2Cx	W-2	500	9
4	9	3D	W-3	300	5
9	4	3D	W-3	300	5

Board (26) Av: NS=-480

N-S	E-W	Contract	N-S	E-W	IMP
1	6	4S	E 4	620	-4
6	1	4S	E 4	620	-4
2	7	4S	E 4	620	-4
7	2	4S	E 4	620	-4
3	5	6S	E-2	200	12
5	3	4S	E 4	620	-4
4	9	4Sx	E-1	200	12
9	4	4S	E 4	620	-4

Board (27) Av: NS=-370

N-S	E-W	Contract	N-S	E-W	IMP
1	6	5D	W 5	400	-1
6	1	5D	E 6	420	-2
2	7	5D	E 5	400	-1
7	2	4S	E 5	450	-2
3	5	3D	W 5	150	6
5	3	4S	E 5	450	-2
4	9	3D	E 5	150	6
9	4	5D	E 5	400	-1

Board (28) Av: NS=-140

N-S	E-W	Contract	N-S	E-W	IMP
1	6	4H	W-2	100	6
6	1	2H	W 3	140	0
2	7	2H	W 3	140	0
7	2	2H	W-1	50	5
3	5	3NT	E 3	400	-6
5	3	2H	W 2	110	1
4	9	2H	W 2	110	1
9	4	3NT	W 3	400	-6

29

♠K109
♥A6
♦A6
♣KQJ1043

♠AQ5
♥KJ73
♦Q43
♣A87

♠J763
♥Q92
♦J72
♣965

♠842
♥10854
♦K10985
♣2

30

♠AKQJ97
♥Q98432
♦Q
♣

♠6543
♥1065
♦J98
♣862

♠1082
♥7
♦A107642
♣1074

♠
♥AKJ
♦K53
♣AKQJ953

31

♠K109
♥Q
♦AJ2
♣AKQ432

♠Q82
♥A10986
♦65
♣1087

♠AJ764
♥J532
♦87
♣65

♠53
♥K74
♦KQ10943
♣J9

32

♠A42
♥K1074
♦Q82
♣J85

♠Q863
♥6
♦AK6
♣KQ1072

♠J109
♥A9852
♦1053
♣64

♠K75
♥QJ3
♦J974
♣A93

Board (29)

N-S	E-W	Contract	N-S	E-W	IMP
3	8	3NT	N 3	600	
8	3	3C	N 4	130	

Board (30)

N-S	E-W	Contract	N-S	E-W	IMP
3	8	6S	N 6	980	
8	3	6H	N 6	980	

Board (31)

N-S	E-W	Contract	N-S	E-W	IMP
3	8	3NT	N 7	720	
8	3	5D	S-1	100	

Board (32)

N-S	E-W	Contract	N-S	E-W	IMP
3	8	2H	E-2	200	
8	3	1S	W 3	140	

木村六郎杯 OPEN TEAMS Session 2 Flight A 2008年2月23日(土)

33

♠ A984
♥ 98
♦ QJ5
♣ Q1098

♠ K1063
♥ KQJ532
♦ 8
♣ 74

♠ J52
♥ A10764
♦ A963
♣ K

♠ Q7
♥
♦ K10742
♣ AJ6532

34

♠ K862
♥ KQ108
♦ 6
♣ A985

♠ AQ10953
♥ J7
♦ 2
♣ Q763

♠ 4
♥ A32
♦ AK10853
♣ K104

♠ J7
♥ 9654
♦ QJ974
♣ J2

35

♠ 74
♥ A7652
♦ 943
♣ QJ3

♠ AKQ63
♥ 84
♦ K876
♣ A10

♠ J109
♥
♦ QJ52
♣ K87652

♠ 852
♥ KQJ1093
♦ A10
♣ 94

36

♠ K74
♥ 2
♦ AJ653
♣ KQ53

♠ 62
♥ 10653
♦ 1072
♣ J1062

♠ Q8
♥ AQJ98
♦ K9
♣ A974

♠ AJ10953
♥ K74
♦ Q84
♣ 8

Board (33)

N-S	E-W	Contract	N-S	E-W	IMP
3	8	5H	E 5	450	
8	3	4H	E 5	450	

Board (34)

N-S	E-W	Contract	N-S	E-W	IMP
3	8	4S	W-2	100	
8	3	2S	W-1	50	

Board (35)

N-S	E-W	Contract	N-S	E-W	IMP
3	8	5C	E 5	600	
8	3	4S	W 6	680	

Board (36)

N-S	E-W	Contract	N-S	E-W	IMP
3	8	5Hx	E-5	1400	
8	3	4S	S 4	620	

37

♠ 103
♥ 10842
♦ 83
♣ Q10642

♠ AKJ6
♥ 97
♦ AJ96
♣ 983

♠ Q7542
♥ AKJ5
♦ 102
♣ K5

♠ 98
♥ Q63
♦ KQ754
♣ AJ7

38

♠ Q9
♥ 1052
♦ K10942
♣ 1095

♠ AK7643
♥ A
♦ A7
♣ AJ74

♠ J102
♥ K743
♦ Q85
♣ K82

♠ 85
♥ QJ986
♦ J63
♣ Q63

39

♠ KJ853
♥ Q102
♦ 7
♣ A543

♠ Q102
♥ K5
♦ AK863
♣ QJ8

♠ A9
♥ J97643
♦ Q1052
♣ 7

♠ 764
♥ A8
♦ J94
♣ K10962

40

♠ Q632
♥ 3
♦ A10974
♣ 943

♠ KJ97
♥ AJ10985
♦ 8
♣ KQ

♠ A1054
♥ 64
♦ K2
♣ J7652

♠ 8
♥ KQ72
♦ QJ653
♣ A108

Board (37)

N-S	E-W	Contract	N-S	E-W	IMP
3	8	4S	E 6	480	
8	3	4S	E 5	450	

Board (38)

N-S	E-W	Contract	N-S	E-W	IMP
3	8	5S	W 7	710	
8	3	6S	W 7	1460	

Board (39)

N-S	E-W	Contract	N-S	E-W	IMP
3	8	4H	W 4	620	
8	3	4H	W 4	620	

Board (40)

N-S	E-W	Contract	N-S	E-W	IMP
3	8	4S	W-1	50	
8	3	4S	E 4	420	

41

♠ J9
♥ Q954
♦ A1095
♣ A53

♠ Q2	N	♠ A1065
♥ A108	W — E	♥ KJ72
♦ KQ82	S	♦ J64
♣ 10762		♣ 84

♠ K8743
♥ 63
♦ 73
♣ KQJ9

42

♠ QJ98
♥ 83
♦ 97
♣ Q7653

♠ 62	N	♠ K73
♥ 65	W — E	♥ 10942
♦ QJ10654	S	♦ AK8
♣ K84		♣ A102

♠ A1054
♥ AKQJ7
♦ 32
♣ J9

Board (41)

N-S	E-W	Contract	N-S	E-W	IMP
3	8	1NT N 1	90		
8	3	Passout			

Board (42)

N-S	E-W	Contract	N-S	E-W	IMP
3	8	1H S 2	110		
8	3	3D E-1	100		

木村六郎杯 OPEN TEAMS Session 3 Flight A 2008年2月24日(日)

1

♠1064
♥AKJ863
♦2
♣973

♠K9
♥952
♦A10765
♣KJ5

♠AQ52
♥4
♦KQ43
♣8642

♠J873
♥Q107
♦J98
♣AQ10

Board (1) Av: NS=-230

N-S	E-W	Contract	N-S	E-W	IMP
2	9	5D W 5	400		-5
9	2	4D W 5	150		2
3	7	Passout			6
7	3	4D W 5	150		2
4	5	5D W 5	400		-5
5	4	3D W 5	150		2
6	8	4D W 4	130		3
8	6	5D W 5	400		-5

2

♠Q10962
♥Q8
♦A9
♣J432

♠A85
♥A1074
♦3
♣A10865

♠73
♥KJ532
♦7542
♣97

♠KJ4
♥96
♦KQJ1086
♣KQ

Board (2) Av: NS=-100

N-S	E-W	Contract	N-S	E-W	IMP
2	9	4S S-2	200		-3
9	2	3H E 4	170		-2
3	7	4S N-2	200		-3
7	3	4H E-2	100		5
4	5	4S N-1	100		0
5	4	4S S-1	100		0
6	8	3D S 5	150		6
8	6	3H E 3	140		-1

3

♠AJ76
♥KQ9
♦AKJ86
♣A

♠KQ108
♥A3
♦7
♣J109876

♠52
♥J82
♦Q932
♣KQ54

♠943
♥107654
♦1054
♣32

Board (3) Av: NS=+90

N-S	E-W	Contract	N-S	E-W	IMP
2	9	4Cx W-2	500		9
9	2	2S W-3	300		5
3	7	3D N-1		50	-4
7	3	4C W-1	100		0
4	5	3D N-1		50	-4
5	4	2D N 2	90		0
6	8	4H S-3	150		-6
8	6	3H S 3	140		2

4

♠AK10762
♥KQ7
♦842
♣3

♠3
♥A10965
♦3
♣KQ9654

♠Q95
♥432
♦AK107
♣A72

♠J84
♥J8
♦QJ965
♣J108

Board (4) Av: NS=-610

N-S	E-W	Contract	N-S	E-W	IMP
2	9	4H W 4	620		0
9	2	4Sx N-3	800		-5
3	7	4H W 4	620		0
7	3	2S N-1	100		11
4	5	4H E 5	650		-1
5	4	4Sx N-2	500		3
6	8	4H W 4	620		0
8	6	4H E 4	620		0

5

♠AJ62
♥1076
♦Q95
♣A102

♠Q10874
♥AQJ
♦A10
♣K43

♠K9
♥K32
♦874
♣Q8765

♠53
♥9854
♦KJ632
♣J9

Board (5) Av: NS=0

N-S	E-W	Contract	N-S	E-W	IMP
2	9	2S W 2	110		-3
9	2	1NT W 2	120		-3
3	7	2C W 4	130		-4
7	3	3NT E-2	100		3
4	5	2NT W-2	100		3
5	4	3NT E-3	150		4
6	8	3NT W 3	400		-9
8	6	3NT E-3	150		4

6

♠K1076
♥Q106
♦10984
♣Q2

♠J
♥J8432
♦KQ653
♣93

♠Q9532
♥9
♦72
♣AKJ87

♠A84
♥AK75
♦AJ
♣10654

Board (6) Av: NS=+90

N-S	E-W	Contract	N-S	E-W	IMP
2	9	2S E-3	300		5
9	2	3C W-1	100		0
3	7	1NT S 2	120		1
7	3	2D W-1	100		0
4	5	2D W-1	100		0
5	4	4H S-3	150		-6
6	8	2NT S 3	150		2
8	6	2NT S-1	50		-4

7

♠QJ9
♥J92
♦9652
♣J95

♠K1076542
♥A5
♦K7
♣K8

♠83
♥Q873
♦AJ
♣AQ764

♠A
♥K1064
♦Q10843
♣1032

Board (7) Av: NS=-650

N-S	E-W	Contract	N-S	E-W	IMP
2	9	4S W 5	650		0
9	2	3NT E 3	600		2
3	7	5S W 5	650		0
7	3	4S W 5	650		0
4	5	4S W 5	650		0
5	4	4S W 5	650		0
6	8	4S W 5	650		0
8	6	4S W 5	650		0

8

♠9
♥852
♦AK1094
♣8764

♠Q1062
♥KQ97
♦865
♣52

♠A8543
♥J10
♦73
♣AKJ10

♠KJ7
♥A643
♦QJ2
♣Q93

Board (8) Av: NS=-130

N-S	E-W	Contract	N-S	E-W	IMP
2	9	2S E 3	140		0
9	2	4D N-3	150		-1
3	7	4D N-2	100		1
7	3	2S E 3	140		0
4	5	3S E 3	140		0
5	4	3S E 3	140		0
6	8	4S E-1	50		5
8	6	2S E 3	140		0

9

♠K6
♥9843
♦6543
♣1043

♠542
♥AQ102
♦Q107
♣KJ8

♠7
♥K75
♦AJ82
♣AQ765

♠AQJ10983
♥J6
♦K9
♣92

♠ N ♠7
♥ W — E ♥K75
♦ S ♦AJ82
♣ S ♣AQ765

10

♠QJ876543
♥982
♦6
♣J

♠K10
♥A
♦Q10754
♣A9742

♠A92
♥K63
♦AJ2
♣Q1065

♠ N ♠K10
♥ W — E ♥A
♦ S ♦Q10754
♣ S ♣A9742

11

♠AJ
♥K6542
♦A9
♣AK83

♠K9763
♥A7
♦108732
♣J

♠Q1042
♥Q8
♦KQ
♣Q10642

♠85
♥J1093
♦J654
♣975

♠ N ♠Q1042
♥ W — E ♥Q8
♦ S ♦KQ
♣ S ♣Q10642

12

♠Q106
♥Q43
♦J8543
♣87

♠985432
♥76
♦7
♣J543

♠J7
♥KJ108
♦AKQ102
♣92

♠AK
♥A952
♦96
♣AKQ106

♠ N ♠J7
♥ W — E ♥KJ108
♦ S ♦AKQ102
♣ S ♣92

Board (9) Av: NS=-280

N-S	E-W	Contract	N-S	E-W	IMP
2	9	4Sx S-2	300		-1
9	2	4Sx S-2	300		-1
3	7	3S S-1	50		6
7	3	4Sx S-2	300		-1
4	5	5C E 5	600		-8
5	4	4Sx S-2	300		-1
6	8	4Sx S-2	300		-1
8	6	3H E 5	200		2

Board (10) Av: NS=-500

N-S	E-W	Contract	N-S	E-W	IMP
2	9	4Sx W 4	790		-7
9	2	2S W 4	170		8
3	7	5NT S-1	100		9
7	3	2S W 4	170		8
4	5	4Sx W 4	790		-7
5	4	4S W 4	620		-3
6	8	4S W 4	620		-3
8	6	4S W 4	620		-3

Board (11) Av: NS=-60

N-S	E-W	Contract	N-S	E-W	IMP
2	9	1H N 2	110		5
9	2	3H N-1	50		0
3	7	2NT N 3	150		5
7	3	4H N-3	150		-3
4	5	3H N-2	100		-1
5	4	3H S-2	100		-1
6	8	4H N-3	150		-3
8	6	4H N-1	50		0

Board (12) Av: NS=-70

N-S	E-W	Contract	N-S	E-W	IMP
2	9	3NT S-3	300		-6
9	2	4H N-4	400		-8
3	7	3NT N-1	100		-1
7	3	3NT N-1	100		-1
4	5	3NT S 3	600		12
5	4	3NT N-1	100		-1
6	8	4Sx E-4	800		13
8	6	4H N-4	400		-8

13

♠KJ1086
♥Q4
♦J54
♣642

♠52
♥KJ1083
♦832
♣QJ5

♠973
♥A765
♦AQ976
♣A

♠AQ4
♥92
♦K10
♣K109873

♠ N ♠973
♥ W — E ♥A765
♦ S ♦AQ976
♣ S ♣A

14

♠5
♥97654
♦A42
♣KQ65

♠KJ764
♥82
♦853
♣1084

♠A8
♥KJ10
♦KJ97
♣J932

♠Q10932
♥AQ3
♦Q106
♣A7

♠ N ♠A8
♥ W — E ♥KJ10
♦ S ♦KJ97
♣ S ♣J932

15

♠A8652
♥KJ
♦A7
♣AK104

♠KJ97
♥A103
♦952
♣Q92

♠Q3
♥742
♦QJ1084
♣863

♠104
♥Q9865
♦K63
♣J75

♠ N ♠Q3
♥ W — E ♥742
♦ S ♦QJ1084
♣ S ♣863

16

♠842
♥J865
♦K1087
♣K10

♠AKJ10973
♥AQ104
♦2
♣J

♠Q6
♥2
♦Q654
♣Q96432

♠5
♥K973
♦AJ93
♣A875

♠ N ♠Q6
♥ W — E ♥2
♦ S ♦Q654
♣ S ♣Q96432

Board (13) Av: NS=+30

N-S	E-W	Contract	N-S	E-W	IMP
2	9	3S N-1	100		-4
9	2	2S N-1	100		-4
3	7	5Hx W-3	800		13
7	3	2H W 4	170		-5
4	5	3S N-1	100		-4
5	4	3S N 3	140		3
6	8	4H W-2	200		5
8	6	2S N 2	110		2

Board (14) Av: NS=+130

N-S	E-W	Contract	N-S	E-W	IMP
2	9	3H N 4	170		1
9	2	1NT N 3	150		1
3	7	3H N 4	170		1
7	3	2S S-1	50		-5
4	5	1NT N 2	120		0
5	4	1NT N 2	120		0
6	8	1NT N 2	120		0
8	6	1NT N 2	120		0

Board (15) Av: NS=+170

N-S	E-W	Contract	N-S	E-W	IMP
1	5	3NT S-1	100		-7
5	1	2S N 3	140		-1
2	3	4H S 5	650		10
3	2	3NT N-2	200		-9
6	7	3NT S 5	660		10
7	6	3NT S 4	630		10
8	9	3NT S-1	100		-7
9	8	3NT S-2	200		-9

Board (16) Av: NS=-600

N-S	E-W	Contract	N-S	E-W	IMP
1	5	5Dx N-3	500		3
5	1	4S W 4	620		-1
2	3	4S W 4	620		-1
3	2	4S W 4	620		-1
6	7	4S W 4	620		-1
7	6	4S W 4	620		-1
8	9	3S W 4	170		10
9	8	4S W 4	620		-1

17

♠AQ1095
♥Q1032
♦K87
♣J

♠KJ73
♥AK
♦2
♣KQ10763

♠842
♥J75
♦QJ954
♣94

♠6
♥9864
♦A1063
♣A852

18

♠QJ4
♥106
♦AJ7653
♣A2

♠K965
♥KQ97
♦Q10
♣865

♠A73
♥AJ5
♦K82
♣Q1073

♠1082
♥8432
♦94
♣KJ94

19

♠J653
♥A93
♦J32
♣Q72

♠K98
♥K74
♦Q104
♣KJ106

♠Q72
♥Q1082
♦AK85
♣83

♠A104
♥J65
♦976
♣A954

20

♠KQ9865
♥K753
♦
♣A85

♠7432
♥Q
♦AKJ65
♣J94

♠AJ
♥A102
♦10983
♣K1073

♠10
♥J9864
♦Q742
♣Q62

Board (17) Av: NS=+110

N-S	E-W	Contract	N-S	E-W	IMP
1	5 3H	N 4	170		2
5	1 4H	N-2		100	-5
2	3 3H	N 3	140		1
3	2 3H	N 3	140		1
6	7 3H	N 4	170		2
7	6 4H	N 4	420		7
8	9 2C	W 2		90	-5
9	8 3H	N 3	140		1

Board (18) Av: NS=-180

N-S	E-W	Contract	N-S	E-W	IMP
1	5 3NT	E 3		400	-6
5	1 2NT	E 3		150	1
2	3 1NT	E 3		150	1
3	2 2H	W 2		110	2
6	7 2H	W 2		110	2
7	6 2NT	E 3		150	1
8	9 2H	W-1	50		6
9	8 3NT	E 3		400	-6

Board (19) Av: NS=-10

N-S	E-W	Contract	N-S	E-W	IMP
1	5 2NT	W 2		120	-3
5	1 2NT	W 2		120	-3
2	3 2NT	W-1	100		3
3	2 2NT	W-1	100		3
6	7 2NT	W-1	100		3
7	6 2NT	W-1	100		3
8	9 2NT	W 2		120	-3
9	8 2NT	W 2		120	-3

Board (20) Av: NS=+190

N-S	E-W	Contract	N-S	E-W	IMP
1	5 3NT	W-2	200		0
5	1 3D	W-1	100		-3
2	3 3D	W 3		110	-7
3	2 4H	N 4	620		10
6	7 3H	N 3	140		-2
7	6 4H	N-1		100	-7
8	9 4H	N 5	650		10
9	8 3NT	E-2	200		0

21

♠10
♥10942
♦932
♣J10543

♠K862
♥Q873
♦Q10
♣K86

♠AQ3
♥AJ65
♦J8754
♣2

♠J9754
♥K
♦AK6
♣AQ97

22

♠AKJ1093
♥K6
♦532
♣85

♠6
♥A9543
♦109
♣AJ1076

♠Q84
♥QJ
♦AKJ876
♣K3

♠752
♥10872
♦Q4
♣Q942

23

♠Q943
♥Q1043
♦K62
♣K5

♠A2
♥KJ982
♦Q98
♣AQ6

♠KJ10
♥A6
♦A104
♣98732

♠8765
♥75
♦J753
♣J104

24

♠96
♥KQJ
♦J108
♣A10875

♠A1052
♥A10964
♦AK3
♣9

♠Q84
♥75
♦96
♣KJ6432

♠KJ73
♥832
♦Q7542
♣Q

Board (21) Av: NS=-10

N-S	E-W	Contract	N-S	E-W	IMP
1	5 4H	W-2	100		3
5	1 2H	E 2		110	-3
2	3 3Cx	S-1		200	-5
3	2 3H	W-1	50		2
6	7 3H	E-1	50		2
7	6 3H	W-1	50		2
8	9 5Cx	S-3		800	-13
9	8 2Cx	S 3	380		9

Board (22) Av: NS=-480

N-S	E-W	Contract	N-S	E-W	IMP
1	5 4H	E 4		620	-4
5	1 4H	W 4		620	-4
2	3 3NT	E-2	200		12
3	2 3NT	E 3		600	-3
6	7 3NT	E 4		630	-4
7	6 3NT	E 3		600	-3
8	9 4H	W 4		620	-4
9	8 3NT	E-3	300		13

Board (23) Av: NS=-500

N-S	E-W	Contract	N-S	E-W	IMP
1	5 6C	E-1	100		12
5	1 3NT	W 3		600	-3
2	3 3NT	W 4		630	-4
3	2 3NT	W 4		630	-4
6	7 3NT	W 5		660	-4
7	6 3NT	W 3		600	-3
8	9 3NT	W 5		660	-4
9	8 6C	E-3	300		13

Board (24) Av: NS=0

N-S	E-W	Contract	N-S	E-W	IMP
1	5 2Cx	N-3		500	-11
5	1 3NT	E-2	100		3
2	3 2NT	E-2	100		3
3	2 2H	W 3		140	-4
6	7 3NT	E-5	250		6
7	6 2H	W 2		110	-3
8	9 2H	W 2		110	-3
9	8 2NT	E-3	150		4

25

♠KQ963
♥A2
♦QJ
♣AQ95

♠J104
♥J1083
♦A106
♣K102

♠A75
♥9
♦K953
♣J8763

♠82
♥KQ7654
♦8742
♣4

26

♠J54
♥J1073
♦AJ65
♣75

♠K862
♥Q2
♦83
♣109642

♠Q109
♥AK64
♦KQ1072
♣K

♠A73
♥985
♦94
♣AQJ83

27

♠A95
♥1032
♦J1074
♣A65

♠K3
♥KQJ86
♦2
♣KQJ103

♠QJ862
♥A974
♦Q6
♣94

♠1074
♥5
♦AK9853
♣872

28

♠J
♥KJ3
♦A10842
♣J754

♠A42
♥A98542
♦J9
♣K10

♠Q65
♥106
♦Q763
♣AQ63

♠K109873
♥Q7
♦K5
♣982

Board (25) Av: NS=+10

N-S	E-W	Contract	N-S	E-W	IMP
1	5	2H	N 2	110	3
5	1	3H	S 3	140	4
2	3	4H	S-1	50	-2
3	2	4H	S-1	50	-2
6	7	4H	S-2	100	-3
7	6	4H	S-1	50	-2
8	9	4H	S-1	50	-2
9	8	2NT	S 2	120	3

Board (26) Av: NS=-70

N-S	E-W	Contract	N-S	E-W	IMP
1	5	1NT	W 2	120	-2
5	1	3D	E 3	110	-1
2	3	1NT	E 2	120	-2
3	2	3S	W 3	140	-2
6	7	3NT	W-2	200	7
7	6	3S	W 3	140	-2
8	9	3D	E-2	200	7
9	8	1NT	E 4	180	-3

Board (27) Av: NS=-420

N-S	E-W	Contract	N-S	E-W	IMP
1	5	4H	W 4	420	0
5	1	4H	W 4	420	0
2	3	4H	W 4	420	0
3	2	4H	W 4	420	0
6	7	4H	W 4	420	0
7	6	5Dx	S-3	500	-2
8	9	4H	W 4	420	0
9	8	4H	W 4	420	0

Board (28) Av: NS=+10

N-S	E-W	Contract	N-S	E-W	IMP
1	5	4H	W-2	100	3
5	1	2NT	E 2	120	-4
2	3	3H	W-1	50	1
3	2	2H	W 2	110	-3
6	7	3H	W-2	100	3
7	6	2H	W 2	110	-3
8	9	3H	W-1	50	1
9	8	3H	W-1	50	1

29

♠98752
♥A
♦1052
♣KQ104

♠Q4
♥107
♦KQJ76
♣J985

♠3
♥98542
♦A984
♣762

♠AKJ106
♥KQJ63
♦3
♣A3

30

♠J72
♥KQJ
♦76542
♣Q3

♠Q865
♥A965
♦Q
♣K842

♠A1093
♥10
♦AKJ8
♣A1097

♠K4
♥87432
♦1093
♣J65

31

♠65
♥AK52
♦K1073
♣K94

♠AKJ973
♥3
♦9862
♣J10

♠Q8
♥Q874
♦J4
♣Q8652

♠1042
♥J1096
♦AQ5
♣A73

32

♠8763
♥62
♦1052
♣AKQ6

♠K1092
♥105
♦Q743
♣543

♠A5
♥K984
♦AK98
♣J82

♠QQJ4
♥AQJ73
♦J6
♣1097

Board (29)

N-S	E-W	Contract	N-S	E-W	IMP
1	4	4S	S 6	680	
4	1	6S	S 6	1430	

Board (30)

N-S	E-W	Contract	N-S	E-W	IMP
1	4	4S	E 5	450	
4	1	4S	E 6	480	

Board (31)

N-S	E-W	Contract	N-S	E-W	IMP
1	4	4H	S 4	620	
4	1	4H	S 4	620	

Board (32)

N-S	E-W	Contract	N-S	E-W	IMP
1	4	1NT	E 3	150	
4	1	1NT	E 3	150	

33

♠ K10852
♥ A94
♦ 105432
♣ 105432

♠ Q10983
♥ A7
♦ J105
♣ AQJ

♠ J542
♥ Q643
♦ KQ2
♣ 96

♠ AK76
♥ J9
♦ 8763
♣ K87

34

♠ 8643
♥ 3
♦ Q65
♣ KJ843

♠ J109
♥ QJ842
♦ K943
♣ 10

♠ Q72
♥ K5
♦ AJ72
♣ A962

♠ AK5
♥ A10976
♦ 108
♣ Q75

35

♠ K943
♥ J42
♦ QJ98
♣ QJ

♠ AJ10
♥ 108763
♦ 642
♣ A7

♠ 72
♥ KQ5
♦ AK
♣ K98642

♠ Q865
♥ A9
♦ 10753
♣ 1053

36

♠ 74
♥ A6
♦ K854
♣ AJ762

♠ A10852
♥ KQ4
♦ 2
♣ K1043

♠ J63
♥ 1053
♦ QJ973
♣ 95

♠ KQ9
♥ J9872
♦ A106
♣ Q8

Board (33)

N-S	E-W	Contract	N-S	E-W	IMP
1	4	3Sx W 3	530		
4	1	1NT N-1	50		

Board (34)

N-S	E-W	Contract	N-S	E-W	IMP
1	4	1NT W 2	120		
4	1	1NT W 3	150		

Board (35)

N-S	E-W	Contract	N-S	E-W	IMP
1	4	4H W 5	650		
4	1	4H W 4	620		

Board (36)

N-S	E-W	Contract	N-S	E-W	IMP
1	4	3NT S 3	600		
4	1	3NT S-1	100		

37

♠ 9732
♥ 10952
♦ 10
♣ QJ105

♠ AK54
♥ 8
♦ AJ86532
♣ 6

♠ QJ
♥ KQ763
♦ 97
♣ A874

♠ 1086
♥ AJ4
♦ KQ4
♣ K932

38

♠ 9
♥ A8
♦ K72
♣ KQ96432

♠ 72
♥ KJ1072
♦ A3
♣ AJ85

♠ AQ853
♥ Q6543
♦ 854
♣

♠ KJ1064
♥ 9
♦ QJ1096
♣ 107

39

♠ J4
♥ J10874
♦ J75
♣ 872

♠ AQ965
♥ 9
♦ AKQ109
♣ A5

♠ K108
♥ AK2
♦ 863
♣ Q943

♠ 732
♥ Q653
♦ 42
♣ KJ106

40

♠ A854
♥ J1063
♦ 3
♣ KQ42

♠ 1032
♥ 52
♦ KJ1076
♣ AJ5

♠ Q9
♥ K97
♦ AQ9854
♣ 98

♠ KJ76
♥ AQ84
♦ 2
♣ 10763

Board (37)

N-S	E-W	Contract	N-S	E-W	IMP
1	4	3NT E-1	50		
4	1	6Dx W-1	100		

Board (38)

N-S	E-W	Contract	N-S	E-W	IMP
1	4	5Cx N-1	100		
4	1	5Hx E-1	200		

Board (39)

N-S	E-W	Contract	N-S	E-W	IMP
1	4	7S W 7	2210		
4	1	7S W 7	2210		

Board (40)

N-S	E-W	Contract	N-S	E-W	IMP
1	4	4H S 5	450		
4	1	4S N 4	420		

41

♠ J873
♥ J9
♦ 983
♣ 7542

N	
W	E
S	

♠ K95
♥ K54
♦ K62
♣ A983

♠ A106
♥ AQ86
♦ J7
♣ KQ106

♠ Q42
♥ 10732
♦ AQ1054
♣ J

42

♠ QJ9
♥ 8754
♦ AQ84
♣ 95

N	
W	E
S	

♠ 1085
♥ AQ1093
♦ 65
♣ 1042

♠ AK63
♥ KJ62
♦ 7
♣ J863

♠ 742
♥
♦ KJ10932
♣ AKQ7

Board (41)

N-S	E-W	Contract	N-S	E-W	IMP
1	4	3NT E 6	690		
4	1	3NT E 6	690		

Board (42)

N-S	E-W	Contract	N-S	E-W	IMP
1	4	5D S 5	600		
4	1	5D S 5	600		

木村六郎杯 OPEN TEAMS Session 4 Flight A 2008年2月24日(日)

1

♠KQ654
♥A95
♦1075
♣J2

♠J107
♥QJ7
♦J3
♣K9763

♠2
♥10432
♦AKQ4
♣A854

♠A983
♥K86
♦9862
♣Q10

2

♠82
♥1086
♦AQ932
♣J97

♠QJ7654
♥QJ3
♦J5
♣Q8

♠A103
♥A742
♦764
♣A62

♠K9
♥K95
♦K108
♣K10543

3

♠QJ52
♥J984
♦42
♣863

♠1074
♥Q653
♦Q653
♣Q10

♠K3
♥A107
♦J10
♣AKJ975

♠A986
♥K2
♦AK987
♣42

4

♠KJ
♥AJ7
♦KQ952
♣A63

♠Q2
♥Q65
♦A87
♣KQJ104

♠109754
♥98432
♦1063
♣

♠A863
♥K10
♦J4
♣98752

Board (1) Av: NS=-110

N-S	E-W	Contract	N-S	E-W	IMP
1	3 3S	N-2	100		0
3	1 3S	N-1	50		2
2	8 4C	E 5	150		-1
8	2 3S	S-2	100		0
4	6 3C	E 5	150		-1
6	4 4C	W 5	150		-1
5	9 1NT	W-1 50			4
9	5 3C	W 4	130		-1

Board (2) Av: NS=-140

N-S	E-W	Contract	N-S	E-W	IMP
1	3 2S	E 3	140		0
3	1 2S	W 3	140		0
2	8 2S	W 3	140		0
8	2 2S	W 3	140		0
4	6 2S	W 2	110		1
6	4 2S	W 2	110		1
5	9 2S	W 3	140		0
9	5 2S	W 3	140		0

Board (3) Av: NS=-100

N-S	E-W	Contract	N-S	E-W	IMP
1	3 3C	E 3	110		0
3	1 3S	S-1	50		2
2	8 3C	E 3	110		0
8	2 2C	E 3	110		0
4	6 2C	E 4	130		-1
6	4 2C	E 4	130		-1
5	9 2C	E 3	110		0
9	5 3C	E-1 100			5

Board (4) Av: NS=+520

N-S	E-W	Contract	N-S	E-W	IMP
1	3 3NT	N 4	630		3
3	1 3NT	S 3	600		2
2	8 3NTxN	4	950		10
8	2 2H	W-3	300		-6
4	6 3NT	N 4	630		3
6	4 2H	E-3	300		-6
5	9 3NT	S 4	630		3
9	5 3D	N 5	150		-9

5

♠A876
♥AQ
♦QJ3
♣J1084

♠Q3
♥K109753
♦1098
♣32

♠9542
♥6
♦K742
♣AQ97

♠KJ10
♥J842
♦A65
♣K65

6

♠Q109742
♥A954
♦10
♣Q10

♠A
♥Q863
♦KQ9654
♣83

♠J853
♥102
♦72
♣J9765

♠K6
♥KJ7
♦AJ83
♣AK42

7

♠10986
♥92
♦A64
♣KQ107

♠42
♥AKQJ
♦KQJ5
♣962

♠KQJ7
♥875
♦109732
♣8

♠A53
♥10643
♦8
♣AJ543

8

♠83
♥108652
♦QJ108
♣QJ

♠K652
♥KJ7
♦6
♣AK932

♠Q107
♥AQ43
♦A73
♣1064

♠AJ94
♥9
♦K9542
♣875

Board (5) Av: NS=+480

N-S	E-W	Contract	N-S	E-W	IMP
1	3 3NT	S-1	100		-11
3	1 3NT	N 3	600		3
2	8 3NT	S 3	600		3
8	2 3NT	S 3	600		3
4	6 3NT	N-1	100		-11
6	4 3NT	S 3	600		3
5	9 3NT	S 3	600		3
9	5 3NxxN	4	1400		14

Board (6) Av: NS=+410

N-S	E-W	Contract	N-S	E-W	IMP
1	3 4S	S 5	450		1
3	1 4S	S 5	450		1
2	8 3D	W-3	300		-3
8	2 6S	N-1	50		-10
4	6 3NT	S 4	430		1
6	4 3NT	S 4	430		1
5	9 4S	N 5	450		1
9	5 3NT	S 3	400		0

Board (7) Av: NS=-90

N-S	E-W	Contract	N-S	E-W	IMP
1	3 3D	E 4	130		-1
3	1 4D	W 4	130		-1
2	8 3D	W 4	130		-1
8	2 2H	W 2	110		-1
4	6 2H	W 2	110		-1
6	4 3D	W 4	130		-1
5	9 1NT	W-1	100		5
9	5 1NT	W-1	100		5

Board (8) Av: NS=+90

N-S	E-W	Contract	N-S	E-W	IMP
1	3 4H	E-2	100		0
3	1 3NT	E 6	490		-11
2	8 4H	E-4	200		3
8	2 4H	E-1	50		-1
4	6 3NT	E-2	100		0
6	4 4H	E-3	150		2
5	9 3NT	E-2	100		0
9	5 4H	W-1	50		-1

9

♠97
♥J9742
♦432
♣K32

♠AQ3
♥K10863
♦
♣AQJ86

♠J842
♥A
♦K9865
♣954

♠K1065
♥Q5
♦AQJ107
♣107

(N) W—E S

10

♠KJ42
♥K7
♦AK765
♣86

♠A106
♥A1086
♦QJ4
♣AJ4

♠873
♥QJ54
♦98
♣Q1092

♠Q95
♥932
♦1032
♣K753

(N) W—E S

11

♠982
♥K87
♦A8542
♣32

♠A6
♥1064
♦J973
♣Q1075

♠J1053
♥J9532
♦Q
♣J84

♠KQ74
♥AQ
♦K106
♣AK96

(N) W—E S

12

♠1086
♥QJ642
♦AK
♣QJ6

♠J7
♥873
♦97542
♣K75

♠A54
♥A105
♦QJ1086
♣32

♠KQ932
♥K9
♦3
♣A10984

(N) W—E S

Board (9) Av: NS=-160

N-S	E-W	Contract	N-S	E-W	IMP
1	3	2Dx S-1		100	2
3	1	3C W 3		110	2
2	8	4S E-2	200		8
8	2	3NT E 3		600	-10
4	6	4C W-1	100		6
6	4	3NT E 3		600	-10
5	9	2C W 3		110	2
9	5	1H W 2		110	2

Board (10) Av: NS=+20

N-S	E-W	Contract	N-S	E-W	IMP
1	3	1NT W-1	100		2
3	1	1NT W 1		90	-3
2	8	1NT W 2		120	-4
8	2	1NT W-2	200		5
4	6	1NTxW-1	200		5
6	4	1NT E 1		90	-3
5	9	1NT W-1	100		2
9	5	1NT W 2		120	-4

Board (11) Av: NS=+330

N-S	E-W	Contract	N-S	E-W	IMP
1	3	3NT S 3	400		2
3	1	3NT S 3	400		2
2	8	3NT S 3	400		2
8	2	3NT S-1		50	-9
4	6	3NT S 4	430		3
6	4	3NT S 3	400		2
5	9	3NT S-1		50	-9
9	5	3NT S 3	400		2

Board (12) Av: NS=+420

N-S	E-W	Contract	N-S	E-W	IMP
1	3	5S S-1		100	-11
3	1	5Dx E-4	800		9
2	8	5Dx E-4	800		9
8	2	4S S-1		100	-11
4	6	4S S 4	620		5
6	4	4S S 5	650		6
5	9	4S S-1		100	-11
9	5	4S N 4	620		5

13

♠K1064
♥KQ5
♦10964
♣72

♠AJ5
♥1086
♦K73
♣K854

♠Q82
♥932
♦AJ52
♣AQJ

♠973
♥AJ74
♦Q8
♣10963

(N) W—E S

14

♠A106542
♥A98
♦73
♣82

♠K9
♥K65
♦Q106
♣QJ1073

♠3
♥Q732
♦AK985
♣K54

♠QJ87
♥J104
♦J42
♣A96

(N) W—E S

15

♠KJ8
♥KJ742
♦Q109
♣K6

♠3
♥Q109
♦A5
♣Q1097543

♠AQ52
♥A653
♦K62
♣A8

♠109764
♥8
♦J8743
♣J2

(N) W—E S

16

♠K942
♥6
♦10973
♣10732

♠J765
♥A75
♦J8654
♣4

♠AQ103
♥KQ93
♦AK2
♣AJ

♠8
♥J10842
♦Q
♣KQ9865

(N) W—E S

Board (13) Av: NS=+180

N-S	E-W	Contract	N-S	E-W	IMP
1	3	3NT W-2	200		1
3	1	3NT W-3	300		3
2	8	3NT W 3		600	-13
8	2	3NT W-2	200		1
4	6	3NT W-2	200		1
6	4	3NT W-1	100		-2
5	9	3NT W-1	100		-2
9	5	3NT E-3	300		3

Board (14) Av: NS=+50

N-S	E-W	Contract	N-S	E-W	IMP
1	3	3NT W-1	50		0
3	1	2NT W-2	100		2
2	8	3NT W-3	150		3
8	2	3D E 4		130	-5
4	6	3D E 4		130	-5
6	4	5C W-1	50		0
5	9	2NT W-1	50		0
9	5	3NT W-3	150		3

Board (15) Av: NS=-470

N-S	E-W	Contract	N-S	E-W	IMP
1	2	3NT E 6		490	-1
2	1	3NT E 5		460	0
3	6	3NT E 5		460	0
6	3	3NT E 5		460	0
4	8	3NT E 5		460	0
8	4	3NT E 5		460	0
5	7	3NT E 6		490	-1
7	5	3NT E 5		460	0

Board (16) Av: NS=-460

N-S	E-W	Contract	N-S	E-W	IMP
1	2	5D W 6		620	-4
2	1	7Cx S-5		1100	-12
3	6	5H E-2	200		12
6	3	5Cx S-3		500	-1
4	8	6S E-1	100		11
8	4	4S E 5		650	-5
5	7	5D W 5		600	-4
7	5	5Cx S-3		500	-1

17 ♠AJ42
♥J642
♦Q74
♣42

♠653 ♠K87
♥103 ♥KQ875
♦K862 ♠K875
♣9853 ♠AK10

W N E S

♠Q109
♥A9
♦A1093
♣QJ76

18 ♠Q10
♥
♦10987
♣Q1085432

♠AJ753 ♠K84
♥J1053 ♥AQ9842
♦J54 ♠K84
♣6 ♠AJ7

W N E S

♠962
♥K76
♦AKQ32
♣K9

19 ♠AK4
♥985
♦743
♣10975

♠J ♠Q10952
♥Q10643 ♥A72
♦KQ98 ♠A10
♣A62 ♠QJ8

W N E S

♠8763
♥KJ
♦J652
♣K43

20 ♠J743
♥K10764
♦42
♣K4

♠A62 ♠Q1085
♥9 ♥AQJ2
♦K863 ♠Q7
♣AQJ96 ♠752

W N E S

♠K9
♥853
♦AJ1095
♣1083

Board (17) Av: NS=-50

N-S	E-W	Contract	N-S	E-W	IMP
1	2	1NT E 2		120	-2
2	1	1NT E 2		120	-2
3	6	1S N 1	80		4
6	3	1H E 1		80	-1
4	8	1NT E 2		120	-2
8	4	1NT E 2		120	-2
5	7	1S N 2	110		4
7	5	1NT E-1	50		3

Board (18) Av: NS=-310

N-S	E-W	Contract	N-S	E-W	IMP
1	2	5H E 5		450	-4
2	1	3H E 4		170	4
3	6	4Hx E 5		690	-9
6	3	5D S-4		400	-3
4	8	5H E-1	50		8
8	4	5D S-2		200	3
5	7	3H E 4		170	4
7	5	5H E 5		450	-4

Board (19) Av: NS=-620

N-S	E-W	Contract	N-S	E-W	IMP
1	2	4H W 4		620	0
2	1	4H W 4		620	0
3	6	4H W 4		620	0
6	3	3NT W 4		630	0
4	8	4H W 5		650	-1
8	4	4H W 4		620	0
5	7	4H W 4		620	0
7	5	4H W 4		620	0

Board (20) Av: NS=-260

N-S	E-W	Contract	N-S	E-W	IMP
1	2	3NT W 4		630	-9
2	1	3NT W-1	100		8
3	6	3NT W-1	100		8
6	3	3NT W-1	100		8
4	8	3NT W-1	100		8
8	4	3NT W 3		600	-8
5	7	3NT W 3		600	-8
7	5	3NT E 4		630	-9

21 ♠74
♥KQ64
♦J96
♣AK84

♠KJ92 ♠A65
♥9753 ♥A102
♦A5432 ♠KQ7
♣ ♠QJ63

W N E S

♠Q1083
♥J8
♦108
♣109752

22 ♠A984
♥J84
♦1053
♣982

♠K10762 ♠Q5
♥KQ1063 ♥A9
♦2 ♠AKQJ98
♣A6 ♠1054

W N E S

♠J3
♥752
♦764
♣KQJ73

23 ♠K108652
♥10832
♦
♣943

♠A743 ♠J
♥J65 ♥974
♦A72 ♠QJ654
♣AQ5 ♠K1076

W N E S

♠Q9
♥AKQ
♦K10983
♣J82

24 ♠864
♥Q9
♦Q72
♣A10983

♠Q9 ♠J52
♥108742 ♥AJ65
♦AK3 ♠J10854
♣K54 ♠Q

W N E S

♠AK1073
♥K3
♦96
♣J762

Board (21) Av: NS=-280

N-S	E-W	Contract	N-S	E-W	IMP
1	2	3NT E 3		400	-3
2	1	3NT E 4		430	-4
3	6	3NT E 4		430	-4
6	3	2D E 3		110	5
4	8	2D E 4		130	4
8	4	2Cx N-1		200	2
5	7	2D E 3		110	5
7	5	3NT E 3		400	-3

Board (22) Av: NS=-930

N-S	E-W	Contract	N-S	E-W	IMP
1	2	6NT W 6		1440	-11
2	1	4H W 6		680	6
3	6	3NT E 6		690	6
6	3	4S E 5		650	7
4	8	6NT E 6		1440	-11
8	4	6NT E 6		1440	-11
5	7	3NT E 6		690	6
7	5	4S E 5		650	7

Board (23) Av: NS=+130

N-S	E-W	Contract	N-S	E-W	IMP
1	2	2S S 2	110		-1
2	1	3Sx S 4	930		13
3	6	2S S 2	110		-1
6	3	2S S 3	140		0
4	8	4S S-1		100	-6
8	4	2S S 3	140		0
5	7	2S S 2	110		-1
7	5	3S N 3	140		0

Board (24) Av: NS=0

N-S	E-W	Contract	N-S	E-W	IMP
1	2	4H W-1	50		2
2	1	4H W-1	50		2
3	6	4H W-1	50		2
6	3	2S S 2	110		3
4	8	4H W-1	50		2
8	4	3H W 4		170	-5
5	7	3S S-1		50	-2
7	5	3H W 3		140	-4

25

♠83
♥J54
♦K1072
♣J1075

♠AKQ9
♥A98
♦Q8
♣AQ94

♠5
♥KQ10763
♦AJ9
♣K83

♠J107642
♥2
♦6543
♣62

26

♠J4
♥K10
♦8632
♣A10982

♠K103
♥A862
♦KJ105
♣54

♠AQ965
♥Q93
♦A974
♣J

♠872
♥J754
♦Q
♣KQ763

27

♠K5
♥A9854
♦AKJ84
♣8

♠108
♥J1072
♦765
♣9543

♠AQ7642
♥K
♦Q93
♣A107

♠J93
♥Q63
♦102
♣KQJ62

28

♠AK43
♥J98
♦AJ954
♣10

♠Q8
♥K10654
♦K862
♣63

♠J9
♥AQ73
♦Q7
♣AK982

♠107652
♥2
♦103
♣QJ754

Board (25) Av: NS=-2220

N-S	E-W	Contract	N-S	E-W	IMP
1	2	7NT W 7	2220		0
2	1	7H E 7	2210		0
3	6	7H E 7	2210		0
6	3	7H E 7	2210		0
4	8	7H E 7	2210		0
8	4	7NT E 7	2220		0
5	7	7NT W 7	2220		0
7	5	7NT W 7	2220		0

Board (26) Av: NS=-650

N-S	E-W	Contract	N-S	E-W	IMP
1	2	4S E 5	650		0
2	1	4S E 5	650		0
3	6	4S E 5	650		0
6	3	4S E 5	650		0
4	8	4S E 5	650		0
8	4	4S E 5	650		0
5	7	4S E 5	650		0
7	5	4S E 5	650		0

Board (27) Av: NS=+30

N-S	E-W	Contract	N-S	E-W	IMP
1	2	4H N-1	50		-2
2	1	4H N 4	420		9
3	6	4H N-1	50		-2
6	3	4H N-1	50		-2
4	8	4H N 4	420		9
8	4	4H N-1	50		-2
5	7	4H N-1	50		-2
7	5	4H N-1	50		-2

Board (28) Av: NS=-250

N-S	E-W	Contract	N-S	E-W	IMP
1	2	3H E 4	170		2
2	1	4H E-1	50		7
3	6	3H W 3	140		3
6	3	4H E 5	450		-5
4	8	4H E 4	420		-5
8	4	4H W 4	420		-5
5	7	4H W 4	420		-5
7	5	2Cx E-1	100		8

29

♠Q6
♥Q
♦7532
♣AJ9543

♠42
♥AJ72
♦AQ64
♣K87

♠AJ853
♥109843
♦K109
♣

♠K1097
♥K65
♦J8
♣Q1062

30

♠K863
♥A7
♦QJ6
♣QJ87

♠542
♥QJ93
♦K73
♣652

♠A
♥K64
♦109854
♣AK104

♠QJ1097
♥10852
♦A2
♣93

31

♠7654
♥983
♦Q2
♣9875

♠K102
♥KQ10752
♦
♣AKQ3

♠983
♥AJ4
♦J986
♣J104

♠AQJ
♥6
♦AK107543
♣62

32

♠J10983
♥1032
♦AK
♣KJ8

♠Q7642
♥J54
♦J10
♣A65

♠A5
♥K9
♦965432
♣Q94

♠K
♥AQ876
♦Q87
♣10732

Board (29)

N-S	E-W	Contract	N-S	E-W	IMP
7	9	4H W 5	650		
9	7	4H W 4	620		

Board (30)

N-S	E-W	Contract	N-S	E-W	IMP
7	9	2S S 3	140		
9	7	3S S-1	50		

Board (31)

N-S	E-W	Contract	N-S	E-W	IMP
7	9	4H W 4	420		
9	7	4H W 5	450		

Board (32)

N-S	E-W	Contract	N-S	E-W	IMP
7	9	4H S-1	50		
9	7	3C N 3	110		

33

♠1082
♥32
♦A942
♣K1063

♠AJ943
♥Q96
♦KQ86
♣9

♠Q5
♥A74
♦J73
♣AQ852

♠K76
♥KJ1085
♦105
♣J74

34

♠972
♥107
♦1054
♣A10954

♠A643
♥86
♦K862
♣KJ3

♠105
♥AQ953
♦AJ3
♣862

♠KQJ8
♥KJ42
♦Q97
♣Q7

35

♠J985
♥A53
♦743
♣AK3

♠K10642
♥962
♦J10
♣Q74

♠Q7
♥J104
♦AKQ92
♣1062

♠A3
♥KQ87
♦865
♣J985

36

♠KJ93
♥10
♦K654
♣Q986

♠762
♥AJ43
♦J92
♣1053

♠10
♥KQ9852
♦Q1073
♣A2

♠AQ854
♥76
♦A8
♣KJ74

Board (33)

N-S	E-W	Contract	N-S	E-W	IMP
7	9	3NT E 3	400		
9	7	3NT E 3	400		

Board (34)

N-S	E-W	Contract	N-S	E-W	IMP
7	9	2NT E-1	50		
9	7	2NT W-3	150		

Board (35)

N-S	E-W	Contract	N-S	E-W	IMP
7	9	3C N-1	50		
9	7	3H N-2	100		

Board (36)

N-S	E-W	Contract	N-S	E-W	IMP
7	9	4S S 5	650		
9	7	4S S 5	650		

37

♠Q109654
♥1076
♦A53
♣5

♠KJ72
♥9843
♦K108
♣108

♠8
♥AKQJ2
♦Q
♣KQ9743

♠A3
♥5
♦J97642
♣AJ62

38

♠J98
♥QJ9864
♦J
♣Q94

♠AKQ107
♥AK1072
♦Q108
♣

♠3
♥5
♦A954
♣J876532

♠6542
♥3
♦K7632
♣AK10

39

♠A87
♥K92
♦A87
♣KJ32

♠109543
♥5
♦9652
♣A106

♠Q6
♥AJ8764
♦KJ4
♣54

♠KJ2
♥Q103
♦Q103
♣Q987

40

♠AJ952
♥2
♦962
♣10953

♠843
♥7
♦KQ10875
♣AQ8

♠Q1076
♥Q9864
♦A3
♣J6

♠K
♥AKJ1053
♦J4
♣K742

Board (37)

N-S	E-W	Contract	N-S	E-W	IMP
7	9	4H W-2	100		
9	7	4H E 4	420		

Board (38)

N-S	E-W	Contract	N-S	E-W	IMP
7	9	4S W-4	400		
9	7	4S W-3	300		

Board (39)

N-S	E-W	Contract	N-S	E-W	IMP
7	9	3NT N 4	630		
9	7	3NT N 4	630		

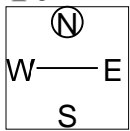
Board (40)

N-S	E-W	Contract	N-S	E-W	IMP
7	9	3H S-2	100		
9	7	2H S-2	100		

41

♠AQJ965
♥QJ
♦Q753
♣J

♠K3
♥105
♦9
♣AK987643



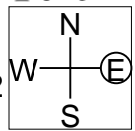
♠84
♥A982
♦862
♣Q1052

♠1072
♥K7643
♦AKJ104
♣

42

♠K103
♥KJ762
♦10
♣8732

♠A872
♥Q3
♦A7532
♣K9



♠J54
♥A85
♦J864
♣Q104

♠Q96
♥1094
♦KQ9
♣AJ65

Board (41)

N-S	E-W	Contract	N-S	E-W	IMP
7	9	5Cx W-2	500		
9	7	6D S 6	920		

Board (42)

N-S	E-W	Contract	N-S	E-W	IMP
7	9	1NT E-2	200		
9	7	3D W-2	200		