

# 兵庫県知事杯 OPEN TEAMS Session 1 Flight B 2008年10月11日(土)

**1**

♠KQ103  
♥K9  
♦J542  
♣A98

♠J75  
♥J103  
♦K873  
♣J63

♠8642  
♥42  
♦AQ10  
♣K754

♠A9  
♥AQ8765  
♦96  
♣Q102

**2**

♠84  
♥876  
♦63  
♣Q98532

♠KQ932  
♥5  
♦AJ84  
♣K76

♠1065  
♥AKJ93  
♦KQ10  
♣J10

♠AJ7  
♥Q1042  
♦9752  
♣A4

**3**

♠KJ43  
♥107  
♦A97  
♣J965

♠Q2  
♥K543  
♦8543  
♣K43

♠A98  
♥A862  
♦2  
♣A10872

♠10765  
♥QJ9  
♦KQJ106  
♣Q

**4**

♠J875  
♥653  
♦65  
♣KQ86

♠10632  
♥AJ984  
♦AKJ4  
♣

♠AK9  
♥KQ102  
♦Q10  
♣AJ107

♠Q4  
♥7  
♦98732  
♣95432

**5**

♠Q1093  
♥94  
♦AJ76  
♣975

♠72  
♥J7632  
♦Q1098  
♣A4

♠J85  
♥AK105  
♦5  
♣QJ1063

♠AK64  
♥Q8  
♦K432  
♣K82

Board (1) Av: NS=+450

N-S	E-W	Contract	N-S	E-W	IMP
1	7 4H	S 6	480		1
7	1 4H	S 4	420		-1
2	8 3NT	N 5	460		0
8	2 4H	S 4	420		-1
3	6 4H	S 4	420		-1
6	3 4H	S 4	420		-1
4	10 4H	S 6	480		1
10	4 3NT	S 6	480		1
5	9 4HT	N 4	430		-1
9	5 4H	S 6	480		1

Board (2) Av: NS=-440

N-S	E-W	Contract	N-S	E-W	IMP
1	7 3NT	E 5	460		-1
7	1 3NT	E 4	430		0
2	8 5S	W 5	450		0
8	2 4S	W 5	450		0
3	6 3NT	E 3	400		1
6	3 4S	W 5	450		0
4	10 4S	W 5	450		0
10	4 3NT	E 3	400		1
5	9 4S	W 5	450		0
9	5 4S	E 5	450		0

Board (3) Av: NS=-60

N-S	E-W	Contract	N-S	E-W	IMP
1	7 3D	S 3	110		5
7	1 3H	W-2	200		6
2	8 3D	S-1	50		0
8	2 3D	S-1	50		0
3	6	Passout			2
6	3 3H	E 3	140		-2
4	10 3H	W 5	200		-4
10	4 2H	W 3	140		-2
5	9 3H	W 4	170		-3
9	5 3D	S-1	50		0

Board (4) Av: NS=-1840

N-S	E-W	Contract	N-S	E-W	IMP
1	7 7H	W 7	2210		-9
7	1 7H	W 7	2210		-9
2	8 7H	W 7	2210		-9
8	2 6H	W 7	1460		9
3	6 6H	W 7	1460		9
6	3 7H	W 7	2210		-9
4	10 6H	W 7	1460		9
10	4 6H	W 7	1460		9
5	9 7H	W 7	2210		-9
9	5 6H	W 7	1460		9

Board (5) Av: NS=-100

N-S	E-W	Contract	N-S	E-W	IMP
1	7 1NT	S 1	90		5
7	1 3S	N-2	200		-3
2	8 1NT	S 1	90		5
8	2 3H	E 4	170		-2
3	6 1NT	S-2	200		-3
6	3 3H	W 4	170		-2
4	10 1NT	S-1	100		0
10	4 1NT	S 3	150		6
5	9 2H	W 4	170		-2
9	5 1NT	S-3	300		-5

**6**

♠A7  
♥KQ3  
♦A832  
♣KQ109

♠5  
♥42  
♦K1097654  
♣853

♠Q98  
♥A9765  
♦QJ  
♣AJ6

♠KJ106432  
♥J108  
♦  
♣742

**7**

♠2  
♥KJ987  
♦Q862  
♣J62

♠876  
♥A65  
♦K953  
♣983

♠KJ104  
♥1042  
♦J4  
♣KQ75

♠AQ953  
♥Q3  
♦A107  
♣A104

**8**

♠Q63  
♥A1042  
♦J87  
♣932

♠A4  
♥QJ753  
♦109  
♣J1074

♠J82  
♥986  
♦4  
♣AKQ865

♠K10975  
♥K  
♦AKQ6532  
♣

**9**

♠94  
♥Q876  
♦J754  
♣K75

♠KJ62  
♥92  
♦K10982  
♣109

♠A108753  
♥AK  
♦A  
♣J843

♠Q  
♥J10543  
♦Q63  
♣AQ62

**10**

♠KJ65  
♥J9  
♦QJ7  
♣K984

♠A109  
♥Q3  
♦K52  
♣QJ632

♠Q87432  
♥A54  
♦104  
♣A5

♠  
♥K108762  
♦A9863  
♣107

Board (6) Av: NS=+430

N-S	E-W	Contract	N-S	E-W	IMP
1	7 4S	S 4	420		0
7	1 4S	S 4	420		0
2	8 3NT	N 5	460		1
8	2 4S	S 5	450		1
3	6 4Sx	N 4	590		4
6	3 4S	S 4	420		0
4	10 4S	S 4	420		0
10	4 4S	S 4	420		0
5	9 4S	S 4	420		0
9	5 4S	N 5	450		1

Board (7) Av: NS=+150

N-S	E-W	Contract	N-S	E-W	IMP
1	7 2NT	N 4	180		1
7	1 2NT	N 4	180		1
2	8 2NT	N 3	150		0
8	2 2C	S-1	100		-6
3	6 2NT	N 3	150		0
6	3 2NT	N 2	120		-1
4	10 2NT	N 4	180		1
10	4 3NT	N 4	630		10
5	9 2H	S 4	170		1
9	5 2C	S 2	90		-2

Board (8) Av: NS=+410

N-S	E-W	Contract	N-S	E-W	IMP
1	7 3D	S 5	150		-6
7	1 4S	S 6	480		2
2	8 5D	S 6	420		0
8	2 4S	S 6	480		2
3	6 5D	S 6	420		0
6	3 4S	S 5	450		1
4	10 4S	S 6	480		2
10	4 4S	S 6	480		2
5	9 4D	S 5	150		-6
9	5 5D	S 5	400		0

Board (9) Av: NS=-650

N-S	E-W	Contract	N-S	E-W	IMP
1	7 4S	E 5	650		0
7	1 4S	E 5	650		0
2	8 4S	E 5	650		0
8	2 4S	E 5	650		0
3	6 4S	E 5	650		0
6	3 5Hx	S-3	500		4
4	10 4S	E 5	650		0
10	4 4S	E 5	650		0
5	9 4S	E 5	650		0
9	5 4S	E 5	650		0

Board (10) Av: NS=-120

N-S	E-W	Contract	N-S	E-W	IMP
1	7 3S	E-1	100		6
7	1 3S	E-2	200		8
2	8 3S	E 4	170		-2
8	2 3D	N 3	110		6
3	6 4S	E-1	100		6
6	3 4S	E 4	620		-11
4	10 3S	E 4	170		-2
10	4 3S	E 4	170		-2
5	9 4H	S-1	100		1
9	5 4S	E 4	620		-11

兵庫県知事杯 OPEN TEAMS Session 1 Flight B 2008年10月11日(土)

**11**

♠10  
♥K832  
♦K82  
♣AQ1074

♠9432 ♠KQJ8  
♥Q5 ♥J107  
♦QJ54 ♠1097  
♣K82 ♣653

♠A765  
♥A964  
♦A63  
♣J9

**12**

♠AKQ87  
♥Q7  
♦963  
♣AK2

♠104 ♠92  
♥AJ842 ♥9653  
♦AJ ♠KQ107  
♣Q763 ♣J85

♠J653  
♥K10  
♦8542  
♣1094

**13**

♠AKJ1094  
♥QJ  
♦K1042  
♣7

♠8652 ♠Q7  
♥AK85 ♥10743  
♦53 ♠J76  
♣653 ♣AK104

♠3  
♥962  
♦AQ98  
♣QJ982

**14**

♠Q854  
♥KJ98  
♦7  
♣KQ76

♠KJ73 ♠10962  
♥A7643 ♥2  
♦53 ♠AQ10642  
♣83 ♣52

♠A  
♥Q105  
♦KJ98  
♣AJ1094

**15**

♠Q1092  
♥AKQ7542  
♦9  
♣7

♠864 ♠AKJ3  
♥J6 ♥108  
♦KJ10854 ♠A32  
♣63 ♣J1042

♠75  
♥93  
♦Q76  
♣AKQ985

Board (11) Av: NS=+480

N-S	E-W	Contract	N-S	E-W	IMP
1	7 4H	N 6	480		0
7	1 4H	N 6	480		0
2	8 4H	N 6	480		0
8	2 4H	N 6	480		0
3	6 3NT	S 4	430		-2
6	3 4H	N 6	480		0
4	10 4H	N 6	480		0
10	4 4H	N 6	480		0
5	9 4H	N 6	480		0
9	5 4H	N 6	480		0

Board (12) Av: NS=-40

N-S	E-W	Contract	N-S	E-W	IMP
1	7 4S	N-1		100	-2
7	1 5Hx	W-3	500		11
2	8 3S	N-1		100	-2
8	2 3S	N-1		100	-2
3	6 3S	N-1		100	-2
6	3 3S	N 3	140		5
4	10 3S	N 3	140		5
10	4 3S	N-1		100	-2
5	9 3S	N-1		100	-2
9	5 3S	N-1		100	-2

Board (13) Av: NS=+140

N-S	E-W	Contract	N-S	E-W	IMP
1	7 2S	N 3	140		0
7	1 2D	N 4	130		0
2	8 2S	N 3	140		0
8	2 2D	N 4	130		0
3	6 2D	N 4	130		0
6	3 2S	N 3	140		0
4	10 2S	N 3	140		0
10	4 2S	N 2	110		-1
5	9 2S	N 4	170		1
9	5 2S	N 4	170		1

Board (14) Av: NS=+430

N-S	E-W	Contract	N-S	E-W	IMP
1	7 3NT	S 4	430		0
7	1 3NT	S 3	400		-1
2	8 3NT	N 4	430		0
8	2 3NT	S 4	430		0
3	6 3NT	N 4	430		0
6	3 3NT	S 4	430		0
4	10 3NT	N 4	430		0
10	4 3NT	S 4	430		0
5	9 3NT	S 4	430		0
9	5 3NT	N 4	430		0

Board (15) Av: NS=+620

N-S	E-W	Contract	N-S	E-W	IMP
1	7 4H	N 5	650		1
7	1 4H	N 4	620		0
2	8 4H	N 4	620		0
8	2 4H	N 4	620		0
3	6 4H	N 4	620		0
6	3 2H	N 4	170		-10
4	10 4H	N 4	620		0
10	4 4H	N 4	620		0
5	9 4H	N 4	620		0
9	5 4H	N 4	620		0

**16**

♠A10  
♥K952  
♦AK109  
♣J87

♠Q85432 ♠K  
♥J104 ♥A873  
♦8 ♥J642  
♣Q43 ♠K1052

♠J976  
♥Q6  
♦Q753  
♣A96

**17**

♠9  
♥KQ972  
♦J4  
♣KQ653

♠KQJ ♠6  
♥J108 ♥A6543  
♦AKQ7 ♥9853  
♣AJ9 ♠874

♠A10875432  
♥  
♦1062  
♣102

**18**

♠82  
♥10764  
♦K64  
♣J1063

♠J9753 ♠AQ6  
♥KJ9 ♥5  
♦A2 ♠Q109853  
♣K95 ♠AQ7

♠K104  
♥AQ832  
♦J7  
♣842

Board (16) Av: NS=+60

N-S	E-W	Contract	N-S	E-W	IMP
1	7 3NT	N 3	400		8
7	1 3NT	N-1		50	-3
2	8 2NT	N-1		50	-3
8	2 2NT	N 4	180		3
3	6 2NT	N-1		50	-3
6	3 1NT	N 1	90		1
4	10 2NT	N 2	120		2
10	4 2NT	N 2	120		2
5	9 2NT	N 3	150		3
9	5 3NT	N-1		50	-3

Board (17) Av: NS=-210

N-S	E-W	Contract	N-S	E-W	IMP
1	7 4Sx	S-3		500	-7
7	1 4Sx	S-3		500	-7
2	8 5Hx	E-6	1400		17
8	2 2S	S-1		50	4
3	6 4Sx	S-3		500	-7
6	3 3D	E 3		110	3
4	10 2S	S-1		50	4
10	4 4NTx	E-1	100		7
5	9 4Sx	S-3		500	-7
9	5 2S	S-1		50	4

Board (18) Av: NS=-420

N-S	E-W	Contract	N-S	E-W	IMP
1	7 3NT	W 3		400	1
7	1 4S	W 4		420	0
2	8 4S	W 5		450	-1
8	2 3NT	W 4		430	0
3	6 4S	W 4		420	0
6	3 4S	W 4		420	0
4	10 4S	W 4		420	0
10	4 4S	W-1	50		10
5	9 4S	W 4		420	0
9	5 4S	W 5		450	-1

兵庫県知事杯 OPEN TEAMS Session 1 Flight B 2008年10月11日(土)

19

♠ J52  
♥ Q84  
♦ KQ1092  
♣ 87

♠ A10864  
♥ 10962  
♦ J  
♣ A65

N E  
W — E  
S

♠ K9  
♥ J  
♦ A864  
♣ Q109432

♠ Q73  
♥ AK753  
♦ 753  
♣ KJ

Board (19) Av: NS=-80

N-S	E-W	Contract	N-S	E-W	IMP
1	10	3H S-2		100	-1
10	1	2H S-1		50	1
2	9	4C W 5		150	-2
9	2	2H S-1		50	1
3	5	2H S-2		100	-1
5	3	3H S-1		50	1
4	7	2H S-1		50	1
7	4	2S W 2		110	-1
6	8	2S S-1		50	1
8	6	2S W 2		110	-1

20

♠ K106  
♥ A32  
♦ KQ96  
♣ 974

♠ 832  
♥ J106  
♦ A742  
♣ Q63

N E  
W — E  
S

♠ Q4  
♥ Q9854  
♦ 3  
♣ AK1082

♠ AJ975  
♥ K7  
♦ J1085  
♣ J5

Board (20) Av: NS=+240

N-S	E-W	Contract	N-S	E-W	IMP
1	10	4S S 4	620		9
10	1	4S S 4	620		9
2	9	4S S-2	200		-10
9	2	3S S 3	140		-3
3	5	2S S 4	170		-2
5	3	2S S 4	170		-2
4	7	2S S 4	170		-2
7	4	3S S 3	140		-3
6	8	4S S 4	620		9
8	6	3H E 3	140		-9

21

♠ 987  
♥ J8764  
♦ A43  
♣ 65

♠ 63  
♥ AK  
♦ KQ972  
♣ AKQ4

N E  
W — E  
S

♠ AJ1052  
♥ Q9  
♦ J1085  
♣ 83

♠ KQ4  
♥ 10532  
♦ 6  
♣ J10972

Board (21) Av: NS=-450

N-S	E-W	Contract	N-S	E-W	IMP
1	10	3NT W 4		430	1
10	1	3NT W 5		460	0
2	9	3NT W 4		430	1
9	2	3NT W 5		460	0
3	5	3NT W 5		460	0
5	3	3NT W 5		460	0
4	7	3NT W 4		430	1
7	4	3NT W 5		460	0
6	8	3NT W 5		460	0
8	6	3NT W 5		460	0

22

♠ J54  
♥ 873  
♦ 863  
♣ AJ42

♠ K863  
♥ J4  
♦ 7  
♣ K109765

N E  
W — E  
S

♠ AQ9  
♥ A62  
♦ AQJ942  
♣ 8

♠ 1072  
♥ KQ1095  
♦ K105  
♣ Q3

Board (22) Av: NS=-100

N-S	E-W	Contract	N-S	E-W	IMP
1	10	3D E 5		150	-2
10	1	3NT E-3	300		9
2	9	2S E 2		110	0
9	2	3D E 4		130	-1
3	5	3D E 4		130	-1
5	3	3D E 3		110	0
4	7	3D E 4		130	-1
7	4	3D E 4		130	-1
6	8	3D E 4		130	-1
8	6	4S E-1	100		5

23

♠ 3  
♥ 972  
♦ K932  
♣ AQJ52

♠ J862  
♥ KQ85  
♦ A  
♣ 10863

N E  
W — E  
S

♠ K954  
♥ A  
♦ J10865  
♣ K97

♠ AQ107  
♥ J10643  
♦ Q74  
♣ 4

Board (23) Av: NS=-40

N-S	E-W	Contract	N-S	E-W	IMP
1	10	3S E-1	100		4
10	1	Passout			1
2	9	2S E 2		110	-2
9	2	Passout			1
3	5	Passout			1
5	3	2NT S-3		300	-6
4	7	4S E-2	200		6
7	4	2S W 2		110	-2
6	8	2C N-2		200	-4
8	6	Passout			1

24

♠ 74  
♥ A986  
♦ J7654  
♣ 92

♠ AQ10653  
♥ QJ  
♦ Q9  
♣ 753

N E  
W — E  
S

♠ K82  
♥ K10754  
♦ K3  
♣ J64

♠ J9  
♥ 32  
♦ A1082  
♣ AKQ108

Board (24) Av: NS=+30

N-S	E-W	Contract	N-S	E-W	IMP
1	10	3S W-1	50		1
10	1	3S E 3		140	-5
2	9	3S W 3		140	-5
9	2	3S W-1	50		1
3	5	2S W 2		110	-4
5	3	4S W-2	100		2
4	7	4S W-2	100		2
7	4	3S W-1	50		1
6	8	4S W-2	100		2
8	6	4S W-2	100		2

25

♠ A973  
♥ J105  
♦ 1098  
♣ K97

♠ KQ652  
♥ A9  
♦ A2  
♣ Q542

N E  
W — E  
S

♠ J  
♥ Q763  
♦ 76543  
♣ AJ3

♠ 1084  
♥ K842  
♦ KQJ  
♣ 1086

Board (25) Av: NS=-80

N-S	E-W	Contract	N-S	E-W	IMP
1	10	2C W 2		90	0
10	1	3C W-1	100		5
2	9	2C W 3		110	-1
9	2	2C W 3		110	-1
3	5	2S W-1	100		5
5	3	2S W 2		110	-1
4	7	2C W 2		90	0
7	4	1NT E 2		120	-1
6	8	2NT E 2		120	-1
8	6	2C W 3		110	-1

26

♠ KQ976  
♥ 9  
♦ K96  
♣ Q1093

♠ 1084  
♥ A1072  
♦ J73  
♣ AJ6

N E  
W — E  
S

♠ 5  
♥ KQ654  
♦ A10842  
♣ 72

♠ AJ32  
♥ J83  
♦ Q5  
♣ K854

Board (26) Av: NS=0

N-S	E-W	Contract	N-S	E-W	IMP
1	10	4S N-1		100	-3
10	1	4S N-1		100	-3
2	9	3S N 4	170		5
9	2	4S N-1		100	-3
3	5	2S N 2	110		3
5	3	Passout			0
4	7	3S N 4	170		5
7	4	Passout			0
6	8	Passout			0
8	6	3H E 4		170	-5

27

♠ J32  
♥ J965  
♦ 10  
♣ AQJ108

♠ 104  
♥ AKQ8432  
♦ J43  
♣ 4

N E  
W — E  
S

♠ AQ975  
♥ AQ107  
♦ K987  
♣ 95

♠ K86  
♥ 9  
♦ AQ652  
♣ K7632

Board (27) Av: NS=+170

N-S	E-W	Contract	N-S	E-W	IMP
1	10	4Hx W-1		100	-2
10	1	3NT N-2		100	-7
2	9	5C S 5	400		6
9	2	5C S-1		50	-6
3	5	5C S 6	420		6
5	3	4S W-1	50		-3
4	7	5Cx S 5	550		9
7	4	4C S 5	150		-1
6	8	2H W 3		140	-7
8	6	5C S 5	400		6

28

♠ AJ10732  
♥ K10862  
♦ Q  
♣ 2

♠ Q8  
♥ Q73  
♦ J1076  
♣ K1083

N E  
W — E  
S

♠ K965  
♥ AJ9  
♦ 95  
♣ AJ95

♠ 4  
♥ 54  
♦ AK8432  
♣ Q764

Board (28) Av: NS=-180

N-S	E-W	Contract	N-S	E-W	IMP
1	10	4S N-2		200	-1
10	1	3H N 3	140		8
2	9	3H N-2		200	-1
9	2	2H N-1		100	2
3	5	3H N-2		200	-1
5	3	3H N-1		100	2
4	7	3D S-2		200	-1
7	4	4H N-2		200	-1
6	8	4H N-2		200	-1
8	6	3D S-2		200	-1

兵庫県知事杯 OPEN TEAMS Session 1 Flight B 2008年10月11日(土)

**29**

♠Q7  
♥KQ97  
♦KJ10985  
♣3

♠A8  
♥83  
♦A764  
♣A10865

♠KJ1054  
♥A654  
♦K942  
♣K942

♠9632  
♥J102  
♦Q32  
♣QJ7

**30**

♠A2  
♥AKQJ953  
♦A3  
♣75

♠10765  
♥107  
♦K764  
♣AJ9

♠KJ3  
♥4  
♦QJ2  
♣KQ10864

♠Q984  
♥862  
♦10985  
♣32

**31**

♠AJ4  
♥KJ1064  
♦Q104  
♣76

♠KQ10  
♥A98  
♦753  
♣9843

♠8763  
♥Q7532  
♦J2  
♣AJ

♠952  
♥  
♦AK986  
♣KQ1052

**32**

♠943  
♥A102  
♦AK42  
♣AK9

♠AQ85  
♥Q76  
♦J863  
♣106

♠J6  
♥K95  
♦Q1075  
♣J852

♠K1072  
♥J843  
♦9  
♣Q743

**33**

♠1042  
♥A63  
♦J10765  
♣75

♠AJ3  
♥10542  
♦AQ2  
♣KQ2

♠K965  
♥QJ7  
♦K94  
♣A94

♠Q87  
♥K98  
♦83  
♣J10863

Board (29) Av: NS=-190

N-S	E-W	Contract	N-S	E-W	IMP
1	10	3NT E 3		600	-9
10	1	3NT W 3		600	-9
2	9	2NT W-1	100		7
9	2	4C W 6		170	1
3	5	3C W 6		170	1
5	3	3NT W-1	100		7
4	7	3Dx N-1		200	0
7	4	2S N-2		200	0
6	8	2S E 3		140	2
8	6	3C W 6		170	1

Board (30) Av: NS=+140

N-S	E-W	Contract	N-S	E-W	IMP
1	10	4Hx N 4		590	10
10	1	5Hx N-1		100	-6
2	9	4S E-2	100		-1
9	2	4H N-1		50	-5
3	5	4H N 4		420	7
5	3	3H N 4		170	1
4	7	3H N 4		170	1
7	4	4H N 4		420	7
6	8	5H N-1		50	-5
8	6	4H N-1		50	-5

Board (31) Av: NS=+240

N-S	E-W	Contract	N-S	E-W	IMP
1	10	3NT N 4		630	9
10	1	3NT N 4		630	9
2	9	2NT N 5		210	-1
9	2	3D S 4		130	-3
3	5	4D S 5		150	-3
5	3	2NT N 5		210	-1
4	7	2NT N 5		210	-1
7	4	3D S 5		150	-3
6	8	2NT N 4		180	-2
8	6	3D S 5		150	-3

Board (32) Av: NS=-40

N-S	E-W	Contract	N-S	E-W	IMP
1	10	3NT N-1		50	0
10	1	3Sx S-2		300	-6
2	9	4H S-1		50	0
9	2	3NT N-3		150	-3
3	5	3NT N-2		100	-2
5	3	2NT N-2		100	-2
4	7	3NT N-2		100	-2
7	4	3NT N 3		400	10
6	8	1NT N 1		90	4
8	6	3H S 3		140	5

Board (33) Av: NS=-450

N-S	E-W	Contract	N-S	E-W	IMP
1	10	3NT W 5		460	0
10	1	3NT W 5		460	0
2	9	3NT W 5		460	0
9	2	4H W 4		420	1
3	5	3NT W 5		460	0
5	3	3NT E 4		430	1
4	7	3NT E 5		460	0
7	4	3NT W 4		430	1
6	8	3NT W 4		430	1
8	6	3NT E 5		460	0

**34**

♠K10987  
♥  
♦Q963  
♣Q976

♠6  
♥AKJ2  
♦A108742  
♣85

♠QJ4  
♥10974  
♦KJ  
♣K432

♠A532  
♥Q8653  
♦5  
♣AJ10

**35**

♠873  
♥K10854  
♦K7  
♣KQ6

♠6542  
♥AJ7  
♦J1092  
♣A10

♠AKQJ10  
♥Q32  
♦AQ8  
♣87

♠9  
♥96  
♦6543  
♣J95432

**36**

♠KJ1097  
♥Q  
♦J1076  
♣J95

♠Q832  
♥A764  
♦52  
♣AK6

♠A5  
♥KJ10982  
♦Q4  
♣742

♠64  
♥53  
♦AK983  
♣Q1083

Board (34) Av: NS=+220

N-S	E-W	Contract	N-S	E-W	IMP
1	10	4S S 4		620	9
10	1	4H E 4		420	-12
2	9	2NT E 2		120	-8
9	2	4S S 4		620	9
3	5	3S N 4		170	-2
5	3	2H E 2		110	-8
4	7	3S S 5		200	-1
7	4	3NTxE-2		300	2
6	8	4S N 4		620	9
8	6	2NT E-2		100	-3

Board (35) Av: NS=-670

N-S	E-W	Contract	N-S	E-W	IMP
1	10	4S E 6		680	0
10	1	4S E 5		650	1
2	9	4S E 6		680	0
9	2	4S W 6		680	0
3	5	4S E 6		680	0
5	3	4S W 6		680	0
4	7	4S E 5		650	1
7	4	4S E 6		680	0
6	8	4S W 5		650	1
8	6	4S W 6		680	0

Board (36) Av: NS=-170

N-S	E-W	Contract	N-S	E-W	IMP
1	10	4H E-1		100	7
10	1	4H E 4		620	-10
2	9	4H E 4		620	-10
9	2	4H E-1		100	7
3	5	4H E 4		620	-10
5	3	4H E-1		100	7
4	7	4H E-1		100	7
7	4	1C W-1		100	7
6	8	4H E-1		100	7
8	6	4H E 4		620	-10

兵庫県知事杯 OPEN TEAMS Session 2 Flight B 2008年10月11日(土)

1 ♠65 ♠Q9754 ♠K93 ♠A53 ♠J843 ♠A1072 ♠A2 ♠A654 ♠K97 ♠KQ9 ♠K83 ♠Q72 ♠QJ108 ♠J106 ♠J108 ♠642 ♠A1072 ♠A2 ♠A654 ♠K97 ♠KQ9 ♠K83 ♠Q72 ♠QJ108

2 ♠AQJ4 ♠K985 ♠3 ♠10765 ♠9765 ♠K2 ♠Q ♠AJ10976 ♠Q942 ♠76432 ♠K82 ♠J ♠1083 ♠AJ10 ♠Q54 ♠AK83

3 ♠J53 ♠KQJ65 ♠AQJ ♠64 ♠AK864 ♠Q1072 ♠104 ♠96432 ♠AKJ1032 ♠9 ♠A98732 ♠K105 ♠985

4 ♠AKQ43 ♠765 ♠K53 ♠J9 ♠105 ♠J9862 ♠102 ♠84 ♠KQ1082 ♠7 ♠AKQ98 ♠AQJ109 ♠76

5 ♠97 ♠7 ♠K86542 ♠Q1093 ♠A8632 ♠AQ1063 ♠9 ♠KQJ1054 ♠KJ84 ♠A ♠87 ♠952 ♠QJ1073 ♠AJ652

Board (1) Av: NS=+80

N-S	E-W	Contract	N-S	E-W	IMP
1	9	1NT E-2	100		1
9	1	1NT E-2	100		1
2	5	1NT E-2	100		1
5	2	1NT E-1	50		-1
3	7	1NT E-2	100		1
7	3	1NT E-1	50		-1
4	6	1NT E-2	100		1
6	4	1NT E-2	100		1
8	10	1NT E-1	50		-1
10	8	1NT E-1	50		-1

Board (2) Av: NS=-60

N-S	E-W	Contract	N-S	E-W	IMP
1	9	2NT S-1	100		-1
9	1	2NT S-2	200		-4
2	5	3D E-2	100		4
5	2	3H N-1	100		-1
3	7	1NT S 1	90		4
7	3	3S N-1	100		-1
4	6	3S N-1	100		-1
6	4	2NT S-2	200		-4
8	10	2S N-1	100		-1
10	8	3Dx E-1	100		4

Board (3) Av: NS=-520

N-S	E-W	Contract	N-S	E-W	IMP
1	9	5Hx N-1	100		9
9	1	4S E 6	680		-4
2	5	5S W 5	650		-4
5	2	5S W 5	650		-4
3	7	5S W 5	650		-4
7	3	5S E 6	680		-4
4	6	5H N-1	50		10
6	4	5Hx N-1	100		9
8	10	5S W 6	680		-4
10	8	5Sx E 5	850		-8

Board (4) Av: NS=+560

N-S	E-W	Contract	N-S	E-W	IMP
1	9	5H S 5	650		3
9	1	6H S-1	100		-12
2	5	5H S 5	650		3
5	2	5H S 5	650		3
3	7	4H S 5	650		3
7	3	4H S 5	650		3
4	6	4H S 5	650		3
6	4	4H S 5	650		3
8	10	5H S 5	650		3
10	8	6H S-1	100		-12

Board (5) Av: NS=-10

N-S	E-W	Contract	N-S	E-W	IMP
1	9	2H E-1	50		-2
9	1	3H E-1	50		-2
2	5	2H E 2	110		-3
5	2	2H E 2	110		-3
3	7	2H E-1	50		2
7	3	2H E 2	110		-3
4	6	4H E-1	50		2
6	4	4H E-1	50		2
8	10	3H E-3	150		4
10	8	2H E 3	140		-4

6 ♠843 ♠Q982 ♠A ♠AQ763 ♠A52 ♠A10653 ♠KQJ97 ♠KQJ97 ♠J8753 ♠K54 ♠J9 ♠106 ♠KJ74 ♠9642 ♠1082

7 ♠J3 ♠K72 ♠Q96 ♠J9842 ♠K1094 ♠Q8752 ♠Q105 ♠842 ♠A6 ♠K73 ♠A6 ♠AJ963 ♠AJ7 ♠Q105

8 ♠Q1082 ♠Q8 ♠108754 ♠J2 ♠KJ54 ♠A963 ♠75 ♠KQ2 ♠AK94 ♠AK1043 ♠J ♠Q83 ♠7 ♠J962 ♠A963 ♠10765

9 ♠A9 ♠87543 ♠7 ♠K9853 ♠Q ♠KJ102 ♠AJ98542 ♠J ♠642 ♠6 ♠KQ106 ♠AQ1072 ♠KJ108753 ♠AQ9 ♠3 ♠64

10 ♠63 ♠Q1053 ♠83 ♠KJ743 ♠752 ♠A98 ♠AJ1075 ♠52 ♠K984 ♠KJ762 ♠KQ ♠AQJ10 ♠4 ♠9642 ♠A1098

Board (6) Av: NS=-590

N-S	E-W	Contract	N-S	E-W	IMP
1	9	4S E 5	650		-2
9	1	4S E 5	650		-2
2	5	2C N 2	90		12
5	2	3S E 5	200		9
3	7	4S E 5	650		-2
7	3	4S E 5	650		-2
4	6	4S E 5	650		-2
6	4	4S E 5	650		-2
8	10	4S E 5	650		-2
10	8	4S E 5	650		-2

Board (7) Av: NS=+130

N-S	E-W	Contract	N-S	E-W	IMP
1	9	4H S 4	620		10
9	1	1NT S 1	90		-1
2	5	4S E-2	200		2
5	2	1NT S 1	90		-1
3	7	1NT S 1	90		-1
7	3	3H S 4	170		1
4	6	3H S 3	140		0
6	4	4H S-1	100		-6
8	10	1NT S 4	180		2
10	8	1NT S 1	90		-1

Board (8) Av: NS=-80

N-S	E-W	Contract	N-S	E-W	IMP
1	9	3S N-1	50		1
9	1	4H W-2	100		5
2	5	4H W-1	50		4
5	2	3S N-2	100		-1
3	7	3S N-1	50		1
7	3	3S N-1	50		1
4	6	3H W 4	170		-3
6	4	3H W 4	170		-3
8	10	3H W 3	140		-2
10	8	3H E 3	140		-2

Board (9) Av: NS=-340

N-S	E-W	Contract	N-S	E-W	IMP
1	9	5D W 5	600		-6
9	1	3S S 3	140		10
2	5	3S S-1	50		7
5	2	3Sx S-1	100		6
3	7	5D E 5	600		-6
7	3	4S S-3	150		5
4	6	5D E 5	600		-6
6	4	5D W 5	600		-6
8	10	4S S-1	50		7
10	8	5D E 5	600		-6

Board (10) Av: NS=+70

N-S	E-W	Contract	N-S	E-W	IMP
1	9	3H E-1	100		1
9	1	3C S 3	110		1
2	5	3H E-1	100		1
5	2	2H E-1	100		1
3	7	2H E-1	100		1
7	3	3H E-1	100		1
4	6	2H E-1	100		1
6	4	3H E-1	100		1
8	10	2H E 2	110		-5
10	8	3H E 3	140		-5

兵庫県知事杯 OPEN TEAMS Session 2 Flight B 2008年10月11日(土)

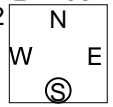
11

♠K105  
♥AJ983  
♦6  
♣A1064

♠QJ8732  
♥K  
♦QJ92  
♣75

♠64  
♥Q7  
♦K873  
♣KQJ93

♠A9  
♥106542  
♦A1054  
♣82



12

♠Q10743  
♥96  
♦K6  
♣AQ96

♠62  
♥KQ854  
♦Q10875  
♣5

♠K5  
♥J1073  
♦AJ2  
♣J843

♠AJ98  
♥A2  
♦943  
♣K1072



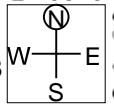
13

♠A107  
♥832  
♦43  
♣A9873

♠K96  
♥K96  
♦AK108  
♣KJ10

♠854  
♥J75  
♦Q76  
♣Q652

♠QJ32  
♥AQ104  
♦J952  
♣4



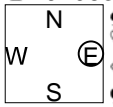
14

♠Q8743  
♥10  
♦Q3  
♣AJ1063

♠KJ9  
♥J643  
♦K107  
♣K97

♠6  
♥K8752  
♦A965  
♣Q54

♠A1052  
♥AQ9  
♦J842  
♣82



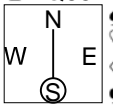
15

♠J10764  
♥4  
♦AKQ  
♣AQ65

♠Q  
♥J9876  
♦984  
♣J873

♠K985  
♥AQ2  
♦J763  
♣104

♠A32  
♥K1053  
♦1052  
♣K92



Board (11) Av: NS=+450

N-S	E-W	Contract	N-S	E-W	IMP
1	9	4H	N 5	450	0
9	1	4H	N 5	450	0
2	5	4H	N 5	450	0
5	2	4H	N 5	450	0
3	7	4H	N 5	450	0
7	3	4H	N 5	450	0
4	6	5H	N 5	450	0
6	4	2S	W 2	110	-1
8	10	5H	N 5	450	0
10	8	4H	N 5	450	0

Board (12) Av: NS=+170

N-S	E-W	Contract	N-S	E-W	IMP
1	9	4S	N-1	100	-7
9	1	4S	N 4	620	10
2	5	3S	N 4	170	0
5	2	4S	N 4	620	10
3	7	4S	N-1	100	-7
7	3	4S	N-1	100	-7
4	6	5Hx	E-1	100	-2
6	4	4S	N 4	620	10
8	10	4S	N-1	100	-7
10	8	3S	N 4	170	0

Board (13) Av: NS=-110

N-S	E-W	Contract	N-S	E-W	IMP
1	9	1NT	W 2	120	0
9	1	1NT	W-1	100	5
2	5	1NT	W 2	120	0
5	2	1NT	E 2	120	0
3	7	1NT	W 2	120	0
7	3	1NT	W 1	90	1
4	6	1NT	W 2	120	0
6	4	1NT	W 1	90	1
8	10	1NT	W 2	120	0
10	8	1NT	W 1	90	1

Board (14) Av: NS=+110

N-S	E-W	Contract	N-S	E-W	IMP
1	9	3S	N 4	170	2
9	1	3H	E-2	100	0
2	5	2S	N 4	170	2
5	2	3S	N 3	140	1
3	7	4S	N 4	420	7
7	3	3S	N 3	140	1
4	6	Passout			-3
6	4	4S	N-1	50	-4
8	10	Passout			-3
10	8	2S	N 3	140	1

Board (15) Av: NS=+440

N-S	E-W	Contract	N-S	E-W	IMP
1	9	4S	N 4	620	5
9	1	4S	N 4	620	5
2	5	4S	N-1	100	-11
5	2	4S	N 4	620	5
3	7	4S	N 4	620	5
7	3	4S	N 4	620	5
4	6	4S	N-1	100	-11
6	4	4S	N-1	100	-11
8	10	4S	N 4	620	5
10	8	4S	N 4	620	5

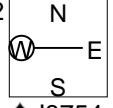
16

♠A9  
♥AKJ  
♦J854  
♣AKQ4

♠KQ62  
♥764  
♦K6  
♣8732

♠103  
♥Q10982  
♦Q1093  
♣105

♠J8754  
♥53  
♦A72  
♣J96



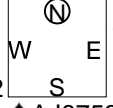
17

♠Q1042  
♥Q6  
♦J987  
♣J109

♠96  
♥84  
♦652  
♣Q86532

♠K  
♥AJ10972  
♦1043  
♣AK4

♠AJ8753  
♥K53  
♦AKQ  
♣7



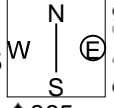
18

♠KQ732  
♥K3  
♦10862  
♣104

♠10  
♥AJ97  
♦AQ975  
♣Q72

♠AJ94  
♥1086  
♦K  
♣K9853

♠865  
♥Q542  
♦J43  
♣AJ6



Board (16) Av: NS=+420

N-S	E-W	Contract	N-S	E-W	IMP
1	9	3NT	N 3	400	-1
9	1	3NT	N 3	400	-1
2	5	3NT	N 3	400	-1
5	2	3NT	N 5	460	1
3	7	3NT	N 3	400	-1
7	3	3NT	N 5	460	1
4	6	3NT	N 5	460	1
6	4	3NT	N 5	460	1
8	10	3NT	N 3	400	-1
10	8	3NT	N 3	400	-1

Board (17) Av: NS=+450

N-S	E-W	Contract	N-S	E-W	IMP
1	9	4S	S 5	450	0
9	1	4S	S 5	450	0
2	5	4S	S 6	480	1
5	2	4S	S 5	450	0
3	7	2S	S 5	200	-6
7	3	4S	S 6	480	1
4	6	4S	N 5	450	0
6	4	4S	N 5	450	0
8	10	4S	N 5	450	0
10	8	4S	S 5	450	0

Board (18) Av: NS=-150

N-S	E-W	Contract	N-S	E-W	IMP
1	9	3NT	E 5	460	-7
9	1	1NT	W 4	180	-1
2	5	3NT	E-1	50	5
5	2	2NT	E 4	180	-1
3	7	3C	E 4	130	1
7	3	3NT	W-1	50	5
4	6	3NT	E 5	460	-7
6	4	3NT	E 3	400	-6
8	10	3NT	W-1	50	5
10	8	3NT	W-1	50	5

兵庫県知事杯 OPEN TEAMS Session 3 Flight B 2008年10月12日(日)

1

♠K32  
♥AJ10  
♦AQ102  
♣A102

♠7  
♥75432  
♦96  
♣K9654

♠Q1094  
♥K9  
♦8743  
♣QJ7

W E  
S

♠AJ865  
♥Q86  
♦KJ5  
♣83

2

♠A8432  
♥97  
♦AQ98  
♣A4

♠106  
♥AJ108  
♦K1053  
♣932

♠975  
♥652  
♦J7  
♣108765

W N E  
S

♠KQJ  
♥KQ43  
♦642  
♣KQJ

3

♠AJ84  
♥A8  
♦105  
♣AQ1085

♠KQ1032  
♥K76  
♦K7  
♣J43

♠965  
♥Q1043  
♦QJ632  
♣6

W N E  
S

♠7  
♥J952  
♦A984  
♣K972

4

♠K9752  
♥AK543  
♦J  
♣J3

♠64  
♥QJ8  
♦A98742  
♣82

♠A83  
♥972  
♦65  
♣A9754

W N E  
S

♠QJ10  
♥106  
♦KQ103  
♣KQ106

5

♠A6  
♥Q102  
♦J42  
♣AK1093

♠108532  
♥63  
♦A987  
♣86

♠KQJ4  
♥54  
♦6  
♣QJ7542

W N E  
S

♠97  
♥AKJ987  
♦KQ1053  
♣

Board (1) Av: NS=+380

N-S	E-W	Contract	N-S	E-W	IMP
1	6 4S	S 5 450			2
6	1 3NT	N 3 400			1
2	10 4S	S 5 450			2
10	2 4S	S 5 450			2
3	8 4S	S 6 480			3
8	3 6S	S-2 100			-10
4	9 4S	S 5 450			2
9	4 3NT	N 3 400			1
5	7 4S	S 5 450			2
7	5 6S	S-1 50			-10

Board (2) Av: NS=+640

N-S	E-W	Contract	N-S	E-W	IMP
1	6 4S	S 5 650			0
6	1 3NT	S 5 660			1
2	10 4S	S 5 650			0
10	2 4S	S 5 650			0
3	8 4S	S 4 620			-1
8	3 4S	S 6 680			1
4	9 4S	S 4 620			-1
9	4 6S	S-1 100			-12
5	7 4S	S 5 650			0
7	5 5S	S 5 650			0

Board (3) Av: NS=+170

N-S	E-W	Contract	N-S	E-W	IMP
1	6 2S	W-1 100			-2
6	1 3C	S 4 130			-1
2	10 2S	W-3 300			4
10	2 3NT	N 3 400			6
3	8 2Sx	W-1 200			1
8	3 3H	S-1 50			-6
4	9 3NT	N-1 50			-6
9	4 2S	W-1 100			-2
5	7 3C	N 5 150			-1
7	5 3NT	N 3 400			6

Board (4) Av: NS=+530

N-S	E-W	Contract	N-S	E-W	IMP
1	6 4S	N 4 620			3
6	1 4S	N 4 620			3
2	10 4S	N-1 100			-12
10	2 4S	N 4 620			3
3	8 4S	N 4 620			3
8	3 3NT	S 4 630			3
4	9 4S	N 4 620			3
9	4 4S	N-1 100			-12
5	7 4S	N 4 620			3
7	5 4S	N 4 620			3

Board (5) Av: NS=+680

N-S	E-W	Contract	N-S	E-W	IMP
1	6 5H	S 6 680			0
6	1 4H	S 6 680			0
2	10 6H	S 6 1430			13
10	2 6H	S 6 1430			13
3	8 4H	S 6 680			0
8	3 6H	S-1 100			-13
4	9 4H	S 6 680			0
9	4 2C	N-4 400			-14
5	7 4H	S 6 680			0
7	5 5H	N 6 680			0

6

♠AQ942  
♥AJ964  
♦Q6  
♣6

♠76  
♥832  
♦A1072  
♣10832

♠KJ3  
♥Q105  
♦98  
♣K9754

W N E  
S

♠1085  
♥K7  
♦KJ543  
♣AQJ

7

♠A5  
♥8652  
♦AQ109  
♣QJ6

♠Q6  
♥A1074  
♦K6532  
♣97

♠1082  
♥KJ  
♦874  
♣K10842

W N E  
S

♠KJ9743  
♥Q93  
♦J  
♣A53

8

♠A105  
♥KQ5  
♦A9652  
♣K9

♠QJ842  
♥8643  
♦83  
♣Q10

♠K973  
♥92  
♦J104  
♣A872

W N E  
S

♠6  
♥AJ107  
♦KQ7  
♣J6543

9

♠K86  
♥A5  
♦Q9876  
♣K108

♠J95  
♥KJ62  
♦A  
♣AQJ65

♠Q72  
♥9743  
♦KJ5  
♣974

W N E  
S

♠A1043  
♥Q108  
♦10432  
♣32

10

♠KJ75  
♥87652  
♦65  
♣A6

♠A106  
♥QJ43  
♦AKJ  
♣K103

♠Q92  
♥Q1098743  
♦QJ8  
♣

W N E  
S

♠843  
♥AK109  
♦2  
♣97542

Board (6) Av: NS=+360

N-S	E-W	Contract	N-S	E-W	IMP
1	6 4S	N 4 420			2
6	1 4S	N 4 420			2
2	10 4H	N-1 50			-9
10	2 4S	N 4 420			2
3	8 4S	N 4 420			2
8	3 4S	N 4 420			2
4	9 4S	N 4 420			2
9	4 4S	N 4 420			2
5	7 5S	N-2 100			-10
7	5 4S	N 4 420			2

Board (7) Av: NS=+470

N-S	E-W	Contract	N-S	E-W	IMP
1	6 4S	S 4 620			4
6	1 4S	S 4 620			4
2	10 3NT	N 3 600			4
10	2 4S	S-2 200			-12
3	8 3S	S 4 170			-7
8	3 4S	S-1 100			-11
4	9 3NT	N 3 600			4
9	4 4S	S 4 620			4
5	7 4S	S 5 650			5
7	5 4S	S 5 650			5

Board (8) Av: NS=+450

N-S	E-W	Contract	N-S	E-W	IMP
1	6 3NT	N 6 490			1
6	1 3NT	N 5 460			0
2	10 3NT	N 6 490			1
10	2 3NT	N 4 430			-1
3	8 3NT	N 4 430			-1
8	3 3NT	N 6 490			1
4	9 3NT	N 5 460			0
9	4 3NT	N 4 430			-1
5	7 3NT	N 4 430			-1
7	5 3NT	N 4 430			-1

Board (9) Av: NS=+10

N-S	E-W	Contract	N-S	E-W	IMP
1	6 2D	N 2 90			2
6	1 4H	E-3 300			7
2	10 3D	N-1 50			-2
10	2 3H	W-1 100			3
3	8 3C	W-1 100			3
8	3 2S	S-1 50			-2
4	9 3C	W 3 110			-3
9	4 3H	E 3 140			-4
5	7 2H	E-1 100			3
7	5 2H	E 2 110			-3

Board (10) Av: NS=-420

N-S	E-W	Contract	N-S	E-W	IMP
1	6 3NT	W 4 630			-5
6	1 3NT	W 3 600			-5
2	10 6D	E-2 200			12
10	2 5D	W 5 600			-5
3	8 3H	N-2 200			6
8	3 6D	E-1 100			11
4	9 3NT	W 5 660			-6
9	4 5Dx	E 5 750			-8
5	7 3D	E 5 150			7
7	5 3NT	W 4 630			-5

兵庫県知事杯 OPEN TEAMS Session 3 Flight B 2008年10月12日(日)

**11**

♠3  
♥A86  
♦9853  
♣AK542

♠K62  
♥KQ743  
♦AJ7  
♣96

N E  
W S

♥QJ10954  
♥J1095  
♦6  
♣J3

♠A87  
♥2  
♦KQ1042  
♣Q1087

Board (11) Av: NS=+230

N-S	E-W	Contract	N-S	E-W	IMP
1	6 5H	W-3	150		-2
6	1 4D	S 5	150		-2
2	10 4H	W-1	50		-5
10	2 5Hx	E-3	500		7
3	8 5C	N 5	400		5
8	3 2H	W 2		110	-8
4	9 4C	N 5	150		-2
9	4 4D	S 5	150		-2
5	7 5C	N 5	400		5
7	5 5C	N 5	400		5

**12**

♠Q53  
♥KJ10873  
♦K102  
♣5

♠K86  
♥Q952  
♦A65  
♣K64

N E  
W S

♠J7  
♥A  
♦Q9843  
♣AQ1093

♠A10942  
♥64  
♦J7  
♣J872

Board (12) Av: NS=-230

N-S	E-W	Contract	N-S	E-W	IMP
1	6 3NT	W 5	460		-6
6	1 3NT	W 4	430		-5
2	10 5D	E-2	100		8
10	2 3NT	W 3	400		-5
3	8 3NT	W 4	430		-5
8	3 5C	W-2	100		8
4	9 3NT	W-3	150		9
9	4 3NT	E 3	400		-5
5	7 3NT	E-1	50		7
7	5 3NT	W 3	400		-5

**13**

♠85  
♥4  
♦KQJ95  
♣J10742

♠76  
♥AK86  
♦1063  
♣KQ63

N E  
W S

♠AQ9432  
♥75  
♦A8  
♣A98

♠KJ10  
♥QJ10932  
♦742  
♣5

Board (13) Av: NS=-30

N-S	E-W	Contract	N-S	E-W	IMP
1	6 3NT	W-3	300		8
6	1 3NT	E-2	200		6
2	10 5S	E-2	200		6
10	2 4S	E 4	620		-11
3	8 4S	E-1	100		4
8	3 4S	E-1	100		4
4	9 3S	E 3	140		-3
9	4 4S	E 4	620		-11
5	7 3Hx	S-1	200		-5
7	5 4S	E-1	100		4

**14**

♠98432  
♥J4  
♦A9742  
♣Q

♠1065  
♥AK987  
♦3  
♣5432

N E  
W S

♠KQ7  
♥Q2  
♦KQ1065  
♣KJ10

♠AJ  
♥10653  
♦J8  
♣A9876

Board (14) Av: NS=-80

N-S	E-W	Contract	N-S	E-W	IMP
1	6 2H	E 3	140		-2
6	1 2H	E-1	50		4
2	10 2S	N-2	100		-1
10	2 3NT	W-1	50		4
3	8 2S	N-3	150		-2
8	3 2H	E 3	140		-2
4	9 2H	E 2	110		-1
9	4 2H	E 3	140		-2
5	7 2H	E 2	110		-1
7	5 2H	E-1	50		4

**15**

♠Q  
♥7642  
♦8652  
♣AK32

♠KJ87  
♥3  
♦QJ10973  
♣86

N E  
W S

♠A6543  
♥J10985  
♦4  
♣Q7

♠1092  
♥AKQ  
♦AK  
♣J10954

Board (15) Av: NS=+630

N-S	E-W	Contract	N-S	E-W	IMP
1	6 3NT	S 4	630		0
6	1 3NT	S 4	630		0
2	10 3NT	S 4	630		0
10	2 3NT	S 4	630		0
3	8 3NT	S 4	630		0
8	3 3NT	S 4	630		0
4	9 3NT	S 4	630		0
9	4 2Dx	W 2	180		-13
5	7 3NT	S 3	600		-1
7	5 3NT	S 4	630		0

**16**

♠AJ65  
♥84  
♦Q9  
♣Q10742

♠2  
♥AK1092  
♦A1084  
♣A96

N E  
W S

♠KQ10943  
♥Q3  
♦J6  
♣853

♠87  
♥J765  
♦K7532  
♣KJ

Board (16) Av: NS=+10

N-S	E-W	Contract	N-S	E-W	IMP
1	6 3NT	W-2	200		5
6	1 4H	W-2	200		5
2	10 3NT	W-3	300		7
10	2 2NT	W-1	100		3
3	8 2H	W 3	140		-4
8	3 2S	E-1	100		3
4	9 3H	W 3	140		-4
9	4 2H	W 2	110		-3
5	7 2H	W 2	110		-3
7	5 2S	E 3	140		-4

**17**

♠AQ1064  
♥6  
♦AKJ62  
♣64

♠32  
♥K53  
♦Q983  
♣AK108

N E  
W S

♠9875  
♥984  
♦1075  
♣952

♠KJ  
♥AQJ1072  
♦4  
♣QJ73

Board (17) Av: NS=+430

N-S	E-W	Contract	N-S	E-W	IMP
1	6 3NT	S 6	490		2
6	1 3NT	S 4	430		0
2	10 3NT	S 4	430		0
10	2 3NT	N 6	490		2
3	8 4H	S 4	420		0
8	3 3NT	N 4	430		0
4	9 4H	S 4	420		0
9	4 4H	S-1	50		-10
5	7 4H	S 4	420		0
7	5 4H	S 4	420		0

**18**

♠7653  
♥A742  
♦KQJ7  
♣A

♠A104  
♥KQ98  
♦1043  
♣J87

N E  
W S

♠QJ9  
♥10  
♦865  
♣KQ10965

♠K82  
♥J653  
♦A92  
♣432

Board (18) Av: NS=+30

N-S	E-W	Contract	N-S	E-W	IMP
1	6 3NT	E-2	100		2
6	1 2H	S 2	110		2
2	10 3H	N 3	140		3
10	2 2H	S-1	100		-4
3	8 2H	S 2	110		2
8	3 5Cx	W-4	800		13
4	9 2H	S 2	110		2
9	4 4H	S-4	400		-10
5	7 3H	S-3	300		-8
7	5 3C	W-1	50		1



兵庫県知事杯 OPEN TEAMS Session 4 Flight B 2008年10月12日(日)

1 ♠1053 ♠AK972 ♠J8 ♠Q64 ♠A109 ♠K6432 ♠J3 ♠K8754 ♠QJ5 ♠95 ♠Q2 ♠Q2 ♠AK108764 ♠J8 ♠Q2 ♠A10 ♠AK108764 ♠Q64 ♠A109 ♠K6432 ♠J3

2 ♠K762 ♠AKQ72 ♠AKQ72 ♠Q5 ♠742 ♠AKQ1087 ♠54 ♠86 ♠432 ♠10963 ♠AJ109843 ♠AJ3 ♠5 ♠J8 ♠KQ1095 ♠J96 ♠AKQ72 ♠Q5 ♠742 ♠AKQ1087 ♠54

3 ♠J5 ♠AK1097 ♠AK1097 ♠Q64 ♠842 ♠AK4 ♠Q864 ♠KJ7 ♠Q109653 ♠K3 ♠832 ♠AQ1093 ♠82 ♠A107 ♠65 ♠J7 ♠J952 ♠Q64 ♠842 ♠AK4 ♠Q864

4 ♠J10972 ♠Q64 ♠AQ9872 ♠93 ♠64 ♠J6 ♠KQ2 ♠J53 ♠AK3 ♠105 ♠A1086 ♠9872 ♠85 ♠K43 ♠J754 ♠AKQ10

5 ♠A82 ♠943 ♠AQ52 ♠10754 ♠65 ♠J93 ♠AK9 ♠J942 ♠765 ♠K10864 ♠QJ ♠A83 ♠KQJ10 ♠7 ♠8632 ♠KQ107

Board (1) Av: NS=-300
Table with 3 columns: N-S, E-W, Contract. Rows 1-9.

Board (2) Av: NS=-480
Table with 3 columns: N-S, E-W, Contract. Rows 1-9.

Board (3) Av: NS=+10
Table with 3 columns: N-S, E-W, Contract. Rows 1-9.

Board (4) Av: NS=-150
Table with 3 columns: N-S, E-W, Contract. Rows 1-9.

Board (5) Av: NS=+20
Table with 3 columns: N-S, E-W, Contract. Rows 1-9.

6 ♠43 ♠AQ10862 ♠9 ♠1093 ♠A32 ♠AQ763 ♠A ♠Q10984 ♠J ♠8542 ♠QJ7642 ♠J5 ♠K975 ♠KJ10 ♠K85 ♠K76

7 ♠K92 ♠A105 ♠1093 ♠Q8652 ♠72 ♠K8 ♠K10973 ♠AK9 ♠J643 ♠A74 ♠A ♠Q10854 ♠Q87 ♠QJ652 ♠J4 ♠J63

8 ♠AQ6542 ♠K1032 ♠1095432 ♠Q53 ♠Q ♠A ♠K10642 ♠K98 ♠J9854 ♠J7 ♠A97 ♠J1073 ♠A76 ♠KQ86 ♠J8

9 ♠76 ♠Q532 ♠AKJ1072 ♠Q ♠54 ♠8 ♠K874 ♠AQ10862 ♠1098 ♠6543 ♠AJ653 ♠3 ♠AKJ4 ♠Q9 ♠1092 ♠KJ97

10 ♠85 ♠KJ1096 ♠964 ♠Q9 ♠A63 ♠85 ♠AK3 ♠J54 ♠QJ1084 ♠7432 ♠J1052 ♠A82 ♠K5 ♠AQ ♠Q87 ♠K10763 ♠972

Board (6) Av: NS=+280
Table with 3 columns: N-S, E-W, Contract. Rows 1-9.

Board (7) Av: NS=+150
Table with 3 columns: N-S, E-W, Contract. Rows 1-9.

Board (8) Av: NS=+450
Table with 3 columns: N-S, E-W, Contract. Rows 1-9.

Board (9) Av: NS=-20
Table with 3 columns: N-S, E-W, Contract. Rows 1-9.

Board (10) Av: NS=-100
Table with 3 columns: N-S, E-W, Contract. Rows 1-9.

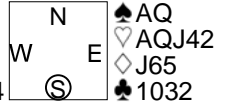
兵庫県知事杯 OPEN TEAMS Session 4 Flight B 2008年10月12日(日)

11

♠10753  
♥108653  
♦102  
♣87

♠842  
♥AQ  
♦Q943  
♣AKQJ4

♠KJ96  
♥97  
♦AK87  
♣965



Board (11) Av: NS=-450

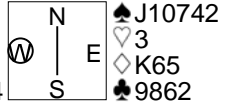
N-S	E-W	Contract	N-S	E-W	IMP
1	5	3NT E 5	460	0	0
5	1	3NT E 5	460	0	0
2	6	3NT E 5	460	0	0
6	2	3NT W 3	400	2	2
3	10	3NT W 5	460	0	0
10	3	3NT W 4	430	1	1
4	8	3NT E 5	460	0	0
8	4	3NT E 5	460	0	0
7	9	3NT E 5	460	0	0
9	7	3NT W 4	430	1	1

12

♠KQ86  
♥KJ10  
♦A97  
♣K53

♠93  
♥Q982  
♦QJ2  
♣AQ104

♠A5  
♥A7654  
♦10843  
♣J7



Board (12) Av: NS=-20

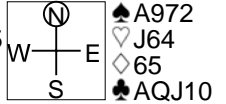
N-S	E-W	Contract	N-S	E-W	IMP
1	5	4H N-1	100	-2	-2
5	1	4H N-1	100	-2	-2
2	6	4H N-1	100	-2	-2
6	2	3NT N-2	200	-5	-5
3	10	3NT N-2	200	-5	-5
10	3	4H N-1	100	-2	-2
4	8	4H N-1	100	-2	-2
8	4	4H N 4	620	12	12
7	9	4H N-1	100	-2	-2
9	7	4H N 4	620	12	12

13

♠Q653  
♥A1073  
♦K832  
♣9

♠J104  
♥K985  
♦J10  
♣8764

♠K8  
♥Q2  
♦AQ974  
♣K532



Board (13) Av: NS=+220

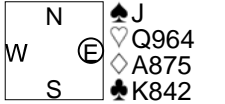
N-S	E-W	Contract	N-S	E-W	IMP
1	5	3D S 4	130	-3	-3
5	1	3D S 5	150	-2	-2
2	6	2D S 5	150	-2	-2
6	2	2D S 5	150	-2	-2
3	10	1S E-2	200	-1	-1
10	3	3NT S 3	600	9	9
4	8	3D S 5	150	-2	-2
8	4	1S E-2	200	-1	-1
7	9	3NT S-1	100	-8	-8
9	7	3NT S 3	600	9	9

14

♠7642  
♥J32  
♦Q1032  
♣96

♠A9  
♥AK1087  
♦J6  
♣QJ107

♠KQ10853  
♥5  
♦K94  
♣A53



Board (14) Av: NS=-390

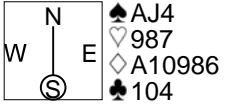
N-S	E-W	Contract	N-S	E-W	IMP
1	5	4H W 5	450	-2	-2
5	1	5H W 5	450	-2	-2
2	6	4H W 5	450	-2	-2
6	2	4Sx S-1	100	7	7
3	10	4S S-1	50	8	8
10	3	5H W 5	450	-2	-2
4	8	4H W 5	450	-2	-2
8	4	4H W 5	450	-2	-2
7	9	4Sx S-2	300	3	3
9	7	5H W 5	450	-2	-2

15

♠Q1063  
♥AQ6  
♦KQ  
♣J752

♠752  
♥J32  
♦J432  
♣K86

♠K98  
♥K1054  
♦75  
♣AQ93



Board (15) Av: NS=-50

N-S	E-W	Contract	N-S	E-W	IMP
1	5	3NT S-1	100	-2	-2
5	1	3NT S-2	200	-4	-4
2	6	3NT S-1	100	-2	-2
6	2	3NT S-2	200	-4	-4
3	10	4S N 4	620	12	12
10	3	3NT S-1	100	-2	-2
4	8	3NT S-1	100	-2	-2
8	4	3NT S-2	200	-4	-4
7	9	3NT S-2	200	-4	-4
9	7	3NT S 4	630	12	12

16

♠QJ10832  
♥AJ874  
♦86  
♣

♠75  
♥Q95  
♦Q107  
♣98652

♠A94  
♥1063  
♦KJ9  
♣AJ73



Board (16) Av: NS=+410

N-S	E-W	Contract	N-S	E-W	IMP
1	5	4S N 5	450	1	1
5	1	4S N 5	450	1	1
2	6	4S N 4	420	0	0
6	2	4S N 5	450	1	1
3	10	4S N 5	450	1	1
10	3	2H N 5	200	-5	-5
4	8	4H S 4	420	0	0
8	4	4S N 5	450	1	1
7	9	4S N 4	420	0	0
9	7	2H S 5	200	-5	-5

17

♠K3  
♥952  
♦J98632  
♣72

♠AQJ6  
♥QJ104  
♦KQ107  
♣5

♠109875  
♥K63  
♦54  
♣A83



Board (17) Av: NS=-330

N-S	E-W	Contract	N-S	E-W	IMP
1	5	3NT W 5	460	-4	-4
5	1	3NT W 5	460	-4	-4
2	6	5H W-3	150	10	10
6	2	6C E-2	100	10	10
3	10	4NT W 5	460	-4	-4
10	3	6NT W-1	50	9	9
4	8	5NT W 5	460	-4	-4
8	4	3NT W 5	460	-4	-4
7	9	3NT W 5	460	-4	-4
9	7	3NT W 5	460	-4	-4

18

♠J92  
♥A7642  
♦103  
♣1063

♠76  
♥Q109  
♦J985  
♣J985

♠K10853  
♥5  
♦K7642  
♣74



Board (18) Av: NS=-430

N-S	E-W	Contract	N-S	E-W	IMP
1	5	3NT E 4	430	0	0
5	1	3NT E 4	430	0	0
2	6	3NT E 4	430	0	0
6	2	3NT E 4	430	0	0
3	10	3NT E 4	430	0	0
10	3	3NT E 4	430	0	0
4	8	3NT E 5	460	-1	-1
8	4	3NT E 4	430	0	0
7	9	3NT E 4	430	0	0
9	7	3NT E 4	430	0	0

兵庫県知事杯 OPEN TEAMS Session 4 Flight B 2008年10月12日(日)

19

♠Q63  
♥1097  
♦K854  
♣Q106

♠A75  
♥KQJ852  
♦QJ  
♣52

N

♥10842  
♥A6  
♦A10962  
♣84

♠KJ9  
♥43  
♦73  
♣AKJ973

Board (19) Av: NS=-100

N-S	E-W	Contract	N-S	E-W	IMP
1	8 3H	W 4		170	-2
8	1 3H	W 3		140	-1
2	7 3C	S-1		50	2
7	2 3H	W 3		140	-1
3	9 1NT	N 1	90		5
9	3 3H	W 5		200	-3
4	5 3S	E 3		140	-1
5	4 3H	W 3		140	-1
6	10 3H	W 3		140	-1
10	6 4H	W-1	100		5

20

♠AQ  
♥KJ85  
♦A1086  
♣862

♠K76542  
♥  
♦KJ42  
♣1074

N

♠J83  
♥AQ642  
♦53  
♣AQJ

♠109  
♥10973  
♦Q97  
♣K953

Board (20) Av: NS=-40

N-S	E-W	Contract	N-S	E-W	IMP
1	8 2S	W 3		140	-3
8	1 4S	W-1	100		4
2	7 1S	W 2		110	-2
7	2 1NT	N-1		100	-2
3	9 2S	W 3		140	-3
9	3 4S	W-1	100		4
4	5 1NT	W 1		90	-2
5	4 2C	E-2	200		6
6	10 4S	W-1	100		4
10	6 1S	W 3		140	-3

21

♠J983  
♥A54  
♦K963  
♣K3

♠64  
♥QJ3  
♦Q542  
♣AQJ8

N

♠AK107  
♥K1076  
♦J107  
♣97

♠Q52  
♥982  
♦A8  
♣106542

Board (21) Av: NS=-40

N-S	E-W	Contract	N-S	E-W	IMP
1	8 2H	E 2		110	-2
8	1 1H	E 2		110	-2
2	7	Passout			1
7	2 1NT	S 1	90		4
3	9 1NT	E 1		90	-2
9	3 3NT	E-1	50		3
4	5 2NT	E 3		150	-3
5	4 3NT	E-1	50		3
6	10 3NT	E-1	50		3
10	6 3NT	W 3		400	-8

22

♠KJ532  
♥102  
♦

♠J108543  
♥

N

♠Q6  
♥Q864  
♦QJ763  
♣96

♠A109  
♥53  
♦AK984  
♣KQ7

Board (22) Av: NS=+150

N-S	E-W	Contract	N-S	E-W	IMP
1	8 2S	S 4		170	1
8	1 2S	S 4		170	1
2	7 2S	S 3		140	0
7	2 4S	S 4	420		7
3	9 4S	S-1		50	-5
9	3 2S	S 3		140	0
4	5 2S	S 3		140	0
5	4 2S	N 3		140	0
6	10 2S	S 3		140	0
10	6 2S	S 3		140	0

23

♠108742  
♥J  
♦Q108  
♣K872

♠J3  
♥Q10654  
♦63  
♣J653

N

♠Q  
♥A98732  
♦K9754  
♣A

♠AK965  
♥K  
♦AJ2  
♣Q1094

Board (23) Av: NS=+430

N-S	E-W	Contract	N-S	E-W	IMP
1	8 4S	S 5		650	6
8	1 4S	S 5		650	6
2	7 4S	S 4		620	5
7	2 4S	S 4		620	5
3	9 4S	S-1		100	-11
9	3 5H	W 5		650	-14
4	5 4S	S 4		620	5
5	4 5Hx	E-1	200		-6
6	10 5Hx	E-1	200		-6
10	6 4S	S 4		620	5

24

♠98  
♥9754  
♦A862  
♣A109

♠754  
♥KQJ8  
♦J74  
♣763

N

♠KQ1032  
♥A63  
♦Q10  
♣J85

♠AJ6  
♥102  
♦K953  
♣KQ42

Board (24) Av: NS=+100

N-S	E-W	Contract	N-S	E-W	IMP
1	8 2S	E-2	100		0
8	1 3D	N 3		110	0
2	7 2S	E-2	100		0
7	2 2S	E-2	100		0
3	9 3D	N 4		130	1
9	3 2S	E-1	50		-2
4	5 2S	E-2	100		0
5	4 2S	E-2	100		0
6	10 2S	E-2	100		0
10	6 2S	E-2	100		0

25

♠J  
♥A64  
♦K1065  
♣AQ1074

♠KQ876  
♥Q95  
♦Q9  
♣952

N

♠A1043  
♥K1087  
♦A7  
♣KJ6

♠952  
♥J32  
♦J8432  
♣83

Board (25) Av: NS=-510

N-S	E-W	Contract	N-S	E-W	IMP
1	8 4S	E 4		620	-3
8	1 4S	E-1	100		12
2	7 4S	E 4		620	-3
7	2 1NT	N-3		150	8
3	9 4S	E 4		620	-3
9	3 4S	E 4		620	-3
4	5 3S	W 4		170	8
5	4 4S	E 5		650	-4
6	10 4S	E 4		620	-3
10	6 4S	E 4		620	-3

26

♠K97  
♥1062  
♦983  
♣Q754

♠A4  
♥K87  
♦Q74  
♣AKJ82

N

♠Q65  
♥AJ9  
♦A10652  
♣93

♠J10832  
♥Q543  
♦KJ  
♣106

Board (26) Av: NS=-630

N-S	E-W	Contract	N-S	E-W	IMP
1	8 3NT	W 4		630	0
8	1 3NT	W 5		660	-1
2	7 3NT	E 5		660	-1
7	2 3NT	W 3		600	1
3	9 3NT	W 4		630	0
9	3 3NT	W-1	100		12
4	5 3NT	W 4		630	0
5	4 3NT	E 4		630	0
6	10 3NT	W 3		600	1
10	6 3NT	W 4		630	0

27

♠AJ63  
♥K964  
♦Q76  
♣75

♠K9  
♥83  
♦K1042  
♣AKJ82

N

♠542  
♥72  
♦85  
♣Q109643

♠Q1087  
♥AQJ105  
♦AJ93  
♣

Board (27) Av: NS=+490

N-S	E-W	Contract	N-S	E-W	IMP
1	8 4H	S 6		480	0
8	1 5H	S 6		480	0
2	7 5H	S 6		480	0
7	2 5H	S 6		480	0
3	9 5Cx	W-4	800		7
9	3 5H	S 6		480	0
4	5 5Cx	W-3	500		0
5	4 5Cx	E-3	500		0
6	10 4H	S 6		480	0
10	6 5H	S 6		480	0

28

♠A743  
♥AJ5  
♦A32  
♣AK2

♠K85  
♥10843  
♦J76  
♣976

N

♠QJ962  
♥Q96  
♦Q  
♣QJ104

♠10  
♥K72  
♦K109854  
♣853

Board (28) Av: NS=+560

N-S	E-W	Contract	N-S	E-W	IMP
1	8 3NT	N 4		630	2
8	1 3NT	N 4		630	2
2	7 3NT	N 4		630	2
7	2 3NT	N 3		600	1
3	9 3NT	N 4		630	2
9	3 3NT	N-1		100	-12
4	5 3NT	N 4		630	2
5	4 3NT	N 3		600	1
6	10 3NT	N 4		630	2
10	6 1NT	N 3		150	-9

兵庫県知事杯 OPEN TEAMS Session 4 Flight B 2008年10月12日(日)

**29**

♠ QJ10932  
♥ 9  
♦ 10832  
♣ A5

♠ 76  
♥ KJ82  
♦ Q6  
♣ Q8642

♠ A  
♥ Q10753  
♦ A75  
♣ K1093

♠ K854  
♥ A64  
♦ KJ94  
♣ J7

**30**

♠ 10  
♥ AK85  
♦ 764  
♣ KQ1065

♠ QJ742  
♥ 64  
♦ AK93  
♣ 43

♠ AK983  
♥ 1032  
♦ Q52  
♣ 92

♠ 65  
♥ QJ97  
♦ J108  
♣ AJ87

**31**

♠ Q86  
♥ Q10876  
♦ A10  
♣ KQ2

♠ 10975  
♥ 532  
♦ Q942  
♣ 93

♠ AJ2  
♥ J  
♦ 876  
♣ A108764

♠ K43  
♥ AK94  
♦ KJ53  
♣ J5

**32**

♠ 64  
♥ Q72  
♦ J103  
♣ AQ1094

♠ KQ72  
♥ 1096  
♦ K9862  
♣ 7

♠ J9  
♥ AK543  
♦ Q4  
♣ 8632

♠ A10853  
♥ J8  
♦ A75  
♣ KJ5

**33**

♠ K32  
♥ KQ  
♦ 8743  
♣ KJ52

♠ 106  
♥ AJ863  
♦ K  
♣ AQ763

♠ A985  
♥ 1074  
♦ Q1092  
♣ 104

♠ QJ74  
♥ 952  
♦ AJ65  
♣ 98

Board (29) Av: NS=-120

N-S	E-W	Contract	N-S	E-W	IMP
1	8 5H	E-1	100		6
8	1 4S	N-1	100		1
2	7 3H	E 4	170		-2
7	2 3S	N 4	170		7
3	9 4S	N-1	100		1
9	3 3S	N 3	140		6
4	5 4H	E 4	620		-11
5	4 4H	E 4	620		-11
6	10 4S	N-1	100		1
10	6 4S	N-1	100		1

Board (30) Av: NS=-90

N-S	E-W	Contract	N-S	E-W	IMP
1	8 3S	W 4	170		-2
8	1 5H	S-2	100		0
2	7 4S	W-1	50		4
7	2 4S	W-1	50		4
3	9 5H	S-2	100		0
9	3 4Sx	W-1	100		5
4	5 3S	E 4	170		-2
5	4 3S	N-2	100		0
6	10 5C	E 4	170		-2
10	6 4S	W 4	420		-8

Board (31) Av: NS=+650

N-S	E-W	Contract	N-S	E-W	IMP
1	8 4H	S 5	650		0
8	1 4H	S 5	650		0
2	7 4H	S 5	650		0
7	2 4H	S 5	650		0
3	9 4H	S 5	650		0
9	3 4H	S 5	650		0
4	5 4H	S 5	650		0
5	4 4H	S 5	650		0
6	10 4H	S 5	650		0
10	6 4H	S 5	650		0

Board (32) Av: NS=-10

N-S	E-W	Contract	N-S	E-W	IMP
1	8 2H	E 2	110		-3
8	1 3H	E 3	140		-4
2	7 2H	E 3	140		-4
7	2 2H	E 3	140		-4
3	9 3H	E-1	100		3
9	3 1NT	N 2	120		4
4	5 1NT	N 2	120		4
5	4 3H	E-1	100		3
6	10 1NT	N 2	120		4
10	6 3S	N-2	100		-3

Board (33) Av: NS=+40

N-S	E-W	Contract	N-S	E-W	IMP
1	8 2S	S-1	50		-3
8	1 4H	W-1	50		0
2	7 3H	W-1	50		0
7	2 2S	S 2	110		2
3	9 2S	S-1	50		-3
9	3 3H	W 3	140		-5
4	5 2H	W-1	50		0
5	4 3H	W-2	100		2
6	10 3H	W-1	50		0
10	6 2D	N 3	110		2

**34**

♠ AQ8  
♥ J853  
♦ A54  
♣ AQ4

♠ K4  
♥ Q1072  
♦ J863  
♣ J93

♠ 10973  
♥ K  
♦ KQ109  
♣ K1065

♠ J652  
♥ A964  
♦ 72  
♣ 872

**35**

♠ J754  
♥ K6  
♦ Q9743  
♣ Q3

♠ AQ10  
♥ QJ87  
♦ A1052  
♣ 76

♠ K862  
♥ A95  
♦ KJ  
♣ K1085

♠ 93  
♥ 10432  
♦ 86  
♣ AJ942

**36**

♠ KJ73  
♥ Q42  
♦ J1053  
♣ 75

♠ 85  
♥ J109865  
♦ 942  
♣ Q9

♠ AQ92  
♥ K7  
♦ KQ8  
♣ 10843

♠ 1064  
♥ A3  
♦ A76  
♣ AKJ62

Board (34) Av: NS=+30

N-S	E-W	Contract	N-S	E-W	IMP
1	8 1NT	N 2	120		3
8	1 1NT	N-2	200		-6
2	7 1NT	N 2	120		3
7	2 1NT	N 2	120		3
3	9 1NT	N 1	90		2
9	3 1NT	N 1	90		2
4	5 1NT	N-1	100		-4
5	4 1NT	N-1	100		-4
6	10 1S	S 1	80		2
10	6 1NT	W 1	90		-3

Board (35) Av: NS=-520

N-S	E-W	Contract	N-S	E-W	IMP
1	8 3NT	W 4	630		-3
8	1 3NT	W-2	200		12
2	7 3NT	E 3	600		-2
7	2 3NT	W 3	600		-2
3	9 3NT	W 3	600		-2
9	3 3NT	W 4	630		-3
4	5 3NT	W-1	100		12
5	4 3NT	W 5	660		-4
6	10 3NT	W 4	630		-3
10	6 3NT	W 3	600		-2

Board (36) Av: NS=+40

N-S	E-W	Contract	N-S	E-W	IMP
1	8 1NT	S 1	90		2
8	1 1C	E-2	200		4
2	7 1NT	S-1	100		-4
7	2 2NT	S-1	100		-4
3	9 2H	W-2	200		4
9	3 2H	W-1	100		2
4	5 1NT	S-1	100		-4
5	4 2H	E 2	110		-4
6	10 1NT	S 2	120		2
10	6 2NT	S 2	120		2

兵庫県知事杯 OPEN TEAMS Session 5 Flight B 2008年10月13日(月)

**1**

♠KQ3  
♥A107  
♦J108  
♣KQ72

♠AJ872  
♥K965  
♦732  
♣9

♠104  
♥Q32  
♦Q94  
♣AJ843

♠965  
♥J84  
♦AK65  
♣1065

**2**

♠AKQ865  
♥1082  
♦4  
♣KJ10

♠104  
♥AJ4  
♦KQ9875  
♣72

♠J9732  
♥765  
♦J102  
♣A4

♠KQ93  
♥AK63  
♦Q98653

**3**

♠AJ1075  
♥K  
♦AQ8  
♣QJ86

♠K942  
♥Q5  
♦10954  
♣A72

♠Q8  
♥A10763  
♦J72  
♣K43

♠63  
♥J9842  
♦K63  
♣1095

**4**

♠42  
♥QJ9  
♦J984  
♣KJ75

♠AKQJ109  
♥876  
♦AK52  
♣

♠75  
♥AK4  
♦Q7  
♣Q109843

♠863  
♥10532  
♦1063  
♣A62

**5**

♠Q9762  
♥8  
♦Q109  
♣J1095

♠A54  
♥K53  
♦K8542  
♣A3

♠KJ8  
♥QJ94  
♦A  
♣K8762

♠103  
♥A10762  
♦J763  
♣Q4

Board (1) Av: NS=+110

N-S	E-W	Contract	N-S	E-W	IMP
1	4 2H	E-1	50		-2
4	1 2NT	N 3	150		1
2	3 2NT	N 3	150		1
3	2 2NT	N 2	120		0
5	8 2NT	N 3	150		1
8	5 1NT	N 1	90		-1
6	9 1NT	N 2	120		0
9	6 2S	W-1	50		-2
7	10 2H	E-1	50		-2
10	7 2NT	N 3	150		1

Board (2) Av: NS=-20

N-S	E-W	Contract	N-S	E-W	IMP
1	4 4S	N-3	300		-7
4	1 4S	N-2	200		-5
2	3 4Sx	N-3	800		-13
3	2 2S	N 3	140		4
5	8 5C	S-1	100		-2
8	5 4S	N-1	100		-2
6	9 2S	N 2	110		4
9	6 3NT	S 3	600		12
7	10 3NT	S 5	660		12
10	7 6H	S-3	300		-7

Board (3) Av: NS=+100

N-S	E-W	Contract	N-S	E-W	IMP
1	4 1S	N 1	80		-1
4	1 1S	N 2	110		0
2	3 3H	E-3	300		5
3	2 1S	N 2	110		0
5	8 1S	N 2	110		0
8	5 1S	N 2	110		0
6	9 3S	N-3	150		-6
9	6 1S	N 1	80		-1
7	10 1S	N 2	110		0
10	7 1S	N 1	80		-1

Board (4) Av: NS=-770

N-S	E-W	Contract	N-S	E-W	IMP
1	4 4S	W 6	680		3
4	1 4S	W 5	650		3
2	3 4S	W 6	680		3
3	2 4S	W 6	680		3
5	8 6S	W 6	1430		-12
8	5 6NT	E 6	1440		-12
6	9 4S	W 6	680		3
9	6 3NT	E 5	660		3
7	10 4S	W 6	680		3
10	7 4S	W 5	650		3

Board (5) Av: NS=-420

N-S	E-W	Contract	N-S	E-W	IMP
1	4 3NT	W 4	430		0
4	1 3NT	E 4	430		0
2	3 3NT	E 4	430		0
3	2 3NT	W 3	400		1
5	8 1NT	W 3	150		7
8	5 3NT	E 4	430		0
6	9 3NT	E 4	430		0
9	6 3NT	W 3	400		1
7	10 3NT	E 4	430		0
10	7 3NT	E 4	430		0

**6**

♠K102  
♥KQ93  
♦J5  
♣A876

♠J  
♥A54  
♦AKQ862  
♣KQ9

♠A98754  
♥J1062  
♦4  
♣J2

♠Q63  
♥87  
♦10973  
♣10543

**7**

♠QJ5  
♥109832  
♦AK  
♣A95

♠A1087  
♥KQ6  
♦97  
♣J862

♠63  
♥AJ5  
♦1052  
♣KQ1043

♠K942  
♥74  
♦QJ8643  
♣7

**8**

♠AQ107  
♥AJ9743  
♦4  
♣Q9

♠53  
♥86  
♦AJ53  
♣K8752

♠KJ6  
♥KQ102  
♦82  
♣AJ64

♠9842  
♥5  
♦KQ10976  
♣103

**9**

♠32  
♥QJ87432  
♦Q  
♣A64

♠J109654  
♥A10  
♦A85  
♣J5

♠AQ87  
♥65  
♦J107  
♣K872

♠K  
♥K9  
♦K96432  
♣Q1093

**10**

♠K864  
♥AK986  
♦A8  
♣KQ

♠Q2  
♥Q4  
♦J765  
♣109432

♠A73  
♥732  
♦Q1032  
♣A86

♠J1095  
♥J105  
♦K94  
♣J75

Board (6) Av: NS=-230

N-S	E-W	Contract	N-S	E-W	IMP
1	4 3NT	W 3	600		-9
4	1 5D	W-2	200		10
2	3 4S	E-1	100		8
3	2 3NT	W 3	600		-9
5	8 3NT	W 3	600		-9
8	5 4S	E-2	200		10
6	9 3NT	W 3	600		-9
9	6 6S	E-4	400		12
7	10 3NT	W-1	100		8
10	7 4S	E 4	620		-9

Board (7) Av: NS=-130

N-S	E-W	Contract	N-S	E-W	IMP
1	4 3C	E 3	110		1
4	1 3C	E 3	110		1
2	3 4Hx	N-1	200		-2
3	2 2H	N 2	110		6
5	8 1NT	N-2	200		-2
8	5 1NT	N-2	200		-2
6	9 1NT	N-3	300		-5
9	6 1NT	N-2	200		-2
7	10 2D	N 4	130		6
10	7 2S	S-1	100		1

Board (8) Av: NS=0

N-S	E-W	Contract	N-S	E-W	IMP
1	4 1H	N 1	80		2
4	1 2H	N-3	150		-4
2	3 2S	S 2	110		3
3	2 2NT	E 4	180		-5
5	8 2S	S-1	50		-2
8	5 1H	N-1	50		-2
6	9 1H	N 1	80		2
9	6 2S	S 3	140		4
7	10 4S	S-2	100		-3
10	7 1H	N 1	80		2

Board (9) Av: NS=-190

N-S	E-W	Contract	N-S	E-W	IMP
1	4 4S	W-1	100		7
4	1 4S	E-1	100		7
2	3 3S	W 4	170		1
3	2 4S	W 4	620		-10
5	8 3S	W-1	100		7
8	5 3S	W 3	140		2
6	9 4S	W 4	620		-10
9	6 4S	W 4	620		-10
7	10 4D	S-3	150		1
10	7 3H	N-1	50		4

Board (10) Av: NS=+650

N-S	E-W	Contract	N-S	E-W	IMP
1	4 4H	N 5	650		0
4	1 4H	N 5	650		0
2	3 4H	N 5	650		0
3	2 4H	N 5	650		0
5	8 4H	N 5	650		0
8	5 4H	N 6	680		1
6	9 4H	N 5	650		0
9	6 4H	N 5	650		0
7	10 4H	N 5	650		0
10	7 4H	N 4	620		-1

兵庫県知事杯 OPEN TEAMS Session 5 Flight B 2008年10月13日(月)

**11**

♠A  
♥9743  
♦K52  
♣AKQ54

♠J5432 N ♠10976  
♥J85 W ♥Q62  
♦J76 E ♦Q104  
♣J10 S ♣983

♠KQ8  
♥AK10  
♦A983  
♣762

Board (11) Av: NS=+990

N-S	E-W	Contract	N-S	E-W	IMP
1	4	6NT S	7	1020	1
4	1	6NT S	7	1020	1
2	3	6NT N	6	990	0
3	2	6NT S	7	1020	1
5	8	6NT S	6	990	0
8	5	6NT S	6	990	0
6	9	6C N	6	920	-2
9	6	3NT S	6	490	-11
7	10	6NT S	6	990	0
10	7	6NT S	6	990	0

**12**

♠A10842  
♥Q4  
♦A9852  
♣4

♠J3 N ♠KQ6  
♥K5 W ♥8732  
♦QJ1074 E ♦K  
♣6532 S ♣AQJ108

♠975  
♥AJ1096  
♦63  
♣K97

Board (12) Av: NS=-30

N-S	E-W	Contract	N-S	E-W	IMP
1	4	2NT E-1	50		2
4	1	3S N-1	100	100	-2
2	3	3D W-2	100		4
3	2	3D W-1	50		2
5	8	3Cx E	3	470	-10
8	5	5Cx E-2	300		8
6	9	2S N-1	100	100	-2
9	6	5C E-2	100		4
7	10	4C E-1	50		2
10	7	3NT W	3	400	-9

**13**

♠8  
♥QJ864  
♦K  
♣KQJ1073

♠AQ1053 N ♠J974  
♥92 W ♥A10753  
♦942 E ♦103  
♣A84 S ♣65

♠K62  
♥K  
♦AQJ8765  
♣92

Board (13) Av: NS=-150

N-S	E-W	Contract	N-S	E-W	IMP
1	4	5D S-2	200		-2
4	1	5D S-1	100		2
2	3	3NT S-1	100		2
3	2	3NT S-2	200		-2
5	8	5D S-2	200		-2
8	5	5C N-1	100		2
6	9	5D S-1	100		2
9	6	5Dx S-1	200		-2
7	10	5D S-2	200		-2
10	7	3NT N-1	100		2

**14**

♠5  
♥K97532  
♦KJ3  
♣1094

♠A109 N ♠KJ764  
♥AQJ1086 W ♥  
♦54 E ♦AQ97  
♣A3 S ♣KQ87

♠Q832  
♥4  
♦10862  
♣J652

Board (14) Av: NS=+70

N-S	E-W	Contract	N-S	E-W	IMP
1	4	6S E-1	50		-1
4	1	6S E-2	100		1
2	3	6S E-1	50		-1
3	2	7S E-2	100		1
5	8	5S E-1	50		-1
8	5	6NT E-2	100		1
6	9	6S E-2	100		1
9	6	7S E-1	50		-1
7	10	6S E-1	50		-1
10	7	4S E	6	480	-11

**15**

♠AK73  
♥A  
♦KQ92  
♣AK95

♠J982 N ♠Q65  
♥J10 W ♥87652  
♦A106 E ♦43  
♣Q1074 S ♣J62

♠104  
♥KQ943  
♦J875  
♣83

Board (15) Av: NS=+650

N-S	E-W	Contract	N-S	E-W	IMP
1	4	3NT N	4	630	-1
4	1	3NT N	5	660	0
2	3	3NT N	5	660	0
3	2	3NT S	4	630	-1
5	8	3NT N	4	630	-1
8	5	3NT N	4	630	-1
6	9	3NT N	6	690	1
9	6	3NT N	5	660	0
7	10	3NT N	6	690	1
10	7	3NT N	4	630	-1

**16**

♠J52  
♥10965  
♦KJ83  
♣AQ

♠K3 N ♠Q9874  
♥Q7432 W ♥AJ8  
♦A10975 E ♦64  
♣4 S ♣1072

♠A106  
♥K  
♦Q2  
♣KJ98653

Board (16) Av: NS=+200

N-S	E-W	Contract	N-S	E-W	IMP
1	4	3NT N-1	50		-6
4	1	3Hx E-2	500		7
2	3	2H E-1	100		-3
3	2	3C S	3	110	-3
5	8	3H E-3	300		3
8	5	3NT S	4	430	6
6	9	3C S	4	130	-2
9	6	3H W-2	200		0
7	10	3NT S	3	400	5
10	7	5C S-1	50		-6

**17**

♠A106  
♥8632  
♦9  
♣AKQJ9

♠QJ8 N ♠K9743  
♥KQJ9 W ♥74  
♦A108 E ♦Q43  
♣764 S ♣1052

♠52  
♥A105  
♦KJ7652  
♣83

Board (17) Av: NS=+110

N-S	E-W	Contract	N-S	E-W	IMP
1	4	2S E-1	50		-2
4	1	2H W-3	150		1
2	3	3S E-2	100		0
3	2	3C N-1	50		-4
5	8	2D S	2	90	-1
8	5	2S E-2	100		0
6	9	2S S	4	130	1
9	6	4S E-3	150		1
7	10	2S E-2	100		0
10	7	2NT N	3	150	1

**18**

♠J973  
♥87  
♦3  
♣KQ8764

♠K10 N ♠AQ865  
♥AK10943 W ♥65  
♦1087 E ♦954  
♣A2 S ♣J109

♠42  
♥QJ2  
♦AKQJ62  
♣53

Board (18) Av: NS=-130

N-S	E-W	Contract	N-S	E-W	IMP
1	4	3D S-2	200		-2
4	1	2H W	3	140	0
2	3	2H W	3	140	0
3	2	2NT S-1	100		1
5	8	3D S-1	100		1
8	5	2H W	3	140	0
6	9	2H W	3	140	0
9	6	4H W-1	50		5
7	10	2H W	2	110	1
10	7	2H E	3	140	0

兵庫県知事杯 OPEN TEAMS Session 6 Flight B 2008年10月13日(月)

**1**

♠AQ86432  
♥K  
♦6  
♣8753

♠KJ  
♥Q10752  
♦7  
♣KJ642

♠105  
♥9864  
♦A10853  
♣AQ

♠97  
♥AJ3  
♦KQJ942  
♣109

**2**

♠J832  
♥1094  
♦J9542  
♣A

♠Q105  
♥Q8  
♦Q873  
♣7542

♠AK  
♥7532  
♦AK10  
♣9863

♠9764  
♥AKJ6  
♦6  
♣KQJ10

**3**

♠Q8  
♥AJ862  
♦K74  
♣1096

♠AK9642  
♥53  
♦962  
♣K5

♠J1075  
♥K9  
♦A105  
♣A432

♠3  
♥Q1074  
♦QJ83  
♣QJ87

**4**

♠K63  
♥8  
♦AK10874  
♣AJ4

♠AJ9  
♥10942  
♦2  
♣Q10852

♠Q87  
♥AKQ63  
♦6  
♣K963

♠10542  
♥J75  
♦QJ953  
♣7

**5**

♠103  
♥7  
♦K1095  
♣AKJ1097

♠K95  
♥J103  
♦QJ8743  
♣8

♠QJ74  
♥A9852  
♦A  
♣Q64

♠A862  
♥KQ64  
♦62  
♣532

Board (1) Av: NS=+130

N-S	E-W	Contract	N-S	E-W	IMP
1	2	3S	N 4	170	1
2	1	3S	N 3	140	0
3	4	4S	N-1	50	-5
4	3	4H	W-2	100	-1
5	6	3S	N 3	140	0
6	5	4S	N 4	420	7
7	8	4S	N 5	450	8
8	7	3S	N-1	50	-5
9	10	3S	N 3	140	0
10	9	4S	N-1	50	-5

Board (2) Av: NS=+60

N-S	E-W	Contract	N-S	E-W	IMP
1	2	2S	N 3	140	2
2	1	1NT	E-1	50	0
3	4	2S	N 3	140	2
4	3	1NT	E-1	50	0
5	6	2S	N 4	170	3
6	5	2H	S-1	100	-4
7	8	1NT	E 1	90	-4
8	7	1NT	E-1	50	0
9	10	3C	E-2	100	1
10	9	1NT	E-1	50	0

Board (3) Av: NS=-460

N-S	E-W	Contract	N-S	E-W	IMP
1	2	4S	W 4	620	-4
2	1	4S	W 4	620	-4
3	4	5S	W-1	100	11
4	3	4S	W 4	620	-4
5	6	4S	W 4	620	-4
6	5	2S	W 4	170	7
7	8	4S	W-1	100	11
8	7	4S	W 4	620	-4
9	10	5Hx	N-3	500	-1
10	9	4S	W 4	620	-4

Board (4) Av: NS=-10

N-S	E-W	Contract	N-S	E-W	IMP
1	2	4H	E-1	100	3
2	1	4D	N 4	130	4
3	4	4H	E 5	650	-12
4	3	5H	W 5	650	-12
5	6	5D	N-1	100	-3
6	5	4H	E-1	100	3
7	8	5D	N 5	600	12
8	7	4D	N 4	130	4
9	10	4H	E-1	100	3
10	9	4D	N 4	130	4

Board (5) Av: NS=-20

N-S	E-W	Contract	N-S	E-W	IMP
1	2	3H	E-1	50	-2
2	1	2H	E 2	110	-3
3	4	2H	E 3	140	-3
4	3	3NT	E-2	100	3
5	6	3C	N 3	110	4
6	5	4Hx	E-2	300	8
7	8	3C	N 3	110	4
8	7	2H	E 2	110	-3
9	10	2H	E 3	140	-3
10	9	2H	E 3	140	-3

**6**

♠A1093  
♥J94  
♦A108  
♣Q105

♠72  
♥Q1065  
♦J9765  
♣96

♠J85  
♥873  
♦Q43  
♣A743

♠KQ64  
♥AK2  
♦K2  
♣KJ82

**7**

♠Q9752  
♥106  
♦Q108632  
♣

♠6  
♥AQ82  
♦A754  
♣10875

♠AJ10843  
♥  
♦KJ9  
♣J962

♠K  
♥KJ97543  
♦  
♣AKQ43

**8**

♠62  
♥KJ1054  
♦A1042  
♣93

♠A8  
♥AQ987  
♦KQ  
♣K874

♠107543  
♥  
♦8653  
♣AQJ6

♠KQJ9  
♥632  
♦J97  
♣1052

**9**

♠10652  
♥J8  
♦QJ9  
♣J972

♠4  
♥AQ1072  
♦1062  
♣AK83

♠KJ3  
♥K3  
♦AK854  
♣654

♠AQ987  
♥9654  
♦73  
♣Q10

**10**

♠KQ5  
♥A84  
♦Q95  
♣K1062

♠J9843  
♥Q32  
♦7  
♣J953

♠76  
♥J75  
♦K8643  
♣AQ7

♠A102  
♥AK1096  
♦AJ102  
♣84

Board (6) Av: NS=+610

N-S	E-W	Contract	N-S	E-W	IMP
1	2	4S	N 6	480	-4
2	1	4S	N 6	480	-4
3	4	6S	N 6	980	9
4	3	5S	N 6	480	-4
5	6	4S	N 6	480	-4
6	5	6S	N 6	980	9
7	8	6S	N 6	980	9
8	7	4S	N 5	450	-4
9	10	4S	N 6	480	-4
10	9	4S	N 6	480	-4

Board (7) Av: NS=-40

N-S	E-W	Contract	N-S	E-W	IMP
1	2	3H	S 3	140	5
2	1	3H	S 3	140	5
3	4	4H	S-1	100	-2
4	3	5H	S-2	200	-4
5	6	3H	S 3	140	5
6	5	4Hx	N-1	200	-4
7	8	4H	S-1	100	-2
8	7	4Hx	S-1	200	-4
9	10	4H	S-1	100	-2
10	9	3H	S 4	170	5

Board (8) Av: NS=+70

N-S	E-W	Contract	N-S	E-W	IMP
1	2	3NT	W-1	50	-1
2	1	3NT	W-4	200	4
3	4	2C	W 3	110	-5
4	3	3NT	W-2	100	1
5	6	5C	W-3	150	2
6	5	2C	W 4	130	-5
7	8	3NT	W-2	100	1
8	7	3NT	W-1	50	-1
9	10	6S	E-3	150	2
10	9	4S	E-2	100	1

Board (9) Av: NS=-530

N-S	E-W	Contract	N-S	E-W	IMP
1	2	4H	W 5	650	-3
2	1	3NT	E-1	100	12
3	4	3NT	E-1	100	12
4	3	3NT	E 5	660	-4
5	6	3NT	E 4	630	-3
6	5	3NT	E 4	630	-3
7	8	3NT	E 3	600	-2
8	7	3NT	E 4	630	-3
9	10	3NT	E 4	630	-3
10	9	3NT	E 3	600	-2

Board (10) Av: NS=+620

N-S	E-W	Contract	N-S	E-W	IMP
1	2	3NT	N 4	630	0
2	1	3NT	S 4	630	0
3	4	3NT	N 4	630	0
4	3	3NT	S 4	630	0
5	6	3NT	N 4	630	0
6	5	3NT	N 3	600	-1
7	8	3NT	N 3	600	-1
8	7	3NT	N 5	660	1
9	10	3NT	S 4	630	0
10	9	2NT	N 3	150	-10

兵庫県知事杯 OPEN TEAMS Session 6 Flight B 2008年10月13日(月)

**11**

♠105432  
♥9874  
♦K62  
♣5

♠K8  
♥J632  
♦1043  
♣K1073

N  
W E  
S

♠QJ  
♥AK10  
♦J985  
♣AJ98

♠A976  
♥Q5  
♦AQ7  
♣Q642

Board (11) Av: NS=+60

N-S	E-W	Contract	N-S	E-W	IMP
1	2	2S N 3	140		2
2	1	2S N 3	140		2
3	4	2S S 3	140		2
4	3	3NT E-2	100		1
5	6	1NT E 2		120	-5
6	5	2S N 2	110		2
7	8	2S N 3	140		2
8	7	1NT E 3		150	-5
9	10	2S N 3	140		2
10	9	3NT E 4		430	-10

**12**

♠J943  
♥1073  
♦AQ7  
♣KJ2

♠AQ6  
♥5  
♦K86543  
♣1053

N  
W E  
S

♠10852  
♥KQ6  
♦J10  
♣Q986

♠K7  
♥AJ9842  
♦92  
♣A74

Board (12) Av: NS=+140

N-S	E-W	Contract	N-S	E-W	IMP
1	2	4H S-2		200	-8
2	1	4H S-1		100	-6
3	4	3H S-1		100	-6
4	3	3H S 3	140		0
5	6	2H S 3	140		0
6	5	4H S 4	620		10
7	8	4H S 4	620		10
8	7	3H S 3	140		0
9	10	3H S 3	140		0
10	9	3H S 3	140		0

**13**

♠Q10  
♥J5  
♦QJ105  
♣QJ982

♠742  
♥A10732  
♦K876  
♣A

N  
W E  
S

♠AKJ53  
♥9  
♦A32  
♣K1064

♠986  
♥KQ864  
♦94  
♣753

Board (13) Av: NS=-660

N-S	E-W	Contract	N-S	E-W	IMP
1	2	4S E 5		650	0
2	1	4S E 5		650	0
3	4	4S E 5		650	0
4	3	4S E 6		680	-1
5	6	4S E 6		680	-1
6	5	4S E 6		680	-1
7	8	4S E 5		650	0
8	7	4S E 4		620	1
9	10	4S E 5		650	0
10	9	5S E 6		680	-1

**14**

♠1042  
♥1064  
♦K76  
♣KQ65

♠865  
♥KQ2  
♦J1094  
♣J109

N  
W E  
S

♠AJ73  
♥AJ8  
♦AQ53  
♣84

♠KQ9  
♥9753  
♦82  
♣A732

Board (14) Av: NS=-120

N-S	E-W	Contract	N-S	E-W	IMP
1	2	1NT E 2		120	0
2	1	1NT E 2		120	0
3	4	1NT E 2		120	0
4	3	1NT E 1		90	1
5	6	1NT E 2		120	0
6	5	1NT W 2		120	0
7	8	1NT E 2		120	0
8	7	1NT E 2		120	0
9	10	1NT E 2		120	0
10	9	1NT E 2		120	0

**15**

♠Q10  
♥AK74  
♦109  
♣A9872

♠97  
♥Q952  
♦864  
♣J1054

N  
W E  
S

♠K8532  
♥108  
♦KJ53  
♣KQ

♠AJ64  
♥J63  
♦AQ72  
♣63

Board (15) Av: NS=+470

N-S	E-W	Contract	N-S	E-W	IMP
1	2	3NT N 4	630		4
2	1	3NT S 4	630		4
3	4	3NT S 3	600		4
4	3	3NT S 4	630		4
5	6	3NT S-1		100	-11
6	5	3NT S 3	600		4
7	8	3NT N 3	600		4
8	7	3H N 4	170		-7
9	10	3NT S-2		200	-12
10	9	3NT S 3	600		4

**16**

♠87652  
♥K9  
♦AQ7  
♣A93

♠Q103  
♥Q1054  
♦652  
♣K52

N  
W E  
S

♠AK  
♥AJ87  
♦KJ983  
♣74

♠J94  
♥632  
♦104  
♣QJ1086

Board (16) Av: NS=+30

N-S	E-W	Contract	N-S	E-W	IMP
1	2	1NT E 2		120	-4
2	1	3NT E-3		300	7
3	4	2D E 3		110	-4
4	3	4H E-1		100	2
5	6	1NT E 2		120	-4
6	5	2S N 3	140		3
7	8	2S N 2	110		2
8	7	2S N 2	110		2
9	10	2S N 2	110		2
10	9	1NT E 2		120	-4

**17**

♠108752  
♥AQ7  
♦J7  
♣A92

♠KQJ3  
♥K1086  
♦103  
♣KQ6

N  
W E  
S

♠94  
♥AQ985  
♣1087543

♠A964  
♥J532  
♦K642  
♣J

Board (17) Av: NS=+60

N-S	E-W	Contract	N-S	E-W	IMP
1	2	4C W-1		50	0
2	1	4C W-2		100	1
3	4	3S N-2		100	-4
4	3	5C W-2		100	1
5	6	4C W-1		50	0
6	5	3NT W-1		50	0
7	8	4Sx N-2		300	-8
8	7	5C W-3		150	3
9	10	3NT W-1		50	0
10	9	3S N 3	140		2

**18**

♠A10  
♥Q986  
♦KQ975  
♣32

♠QJ9873  
♥A43  
♦83  
♣74

N  
W E  
S

♠K65  
♥KJ7  
♦J62  
♣AKQ10

♠42  
♥1052  
♦A104  
♣J9865

Board (18) Av: NS=-420

N-S	E-W	Contract	N-S	E-W	IMP
1	2	4S E 4		420	0
2	1	4S E 4		420	0
3	4	4S E 4		420	0
4	3	4S E 4		420	0
5	6	4S E 4		420	0
6	5	4S E 4		420	0
7	8	4S E 4		420	0
8	7	4S E 4		420	0
9	10	2S E 4		170	6
10	9	4S E 4		420	0



兵庫県知事杯 OPEN TEAMS Session 6 Flight B 2008年10月13日(月)

19

♠K10  
♥QJ4  
♦Q109842  
♣A6

♠54  
♥1082  
♦KJ765  
♣K54

N  
W—E  
S

♠93  
♥AK965  
♦A3  
♣J1072

♠AQJ8762  
♥73  
♦  
♣Q983

Board (19) Av: NS=+120

N-S	E-W	Contract	N-S	E-W	IMP
1	3 4S	S-1		50	-5
3	1 3S	S 4	170		2
2	4 4S	S-1		50	-5
4	2 2S	S 4	170		2
5	10 4S	S 4	420		7
10	5 3S	S-1		50	-5
6	7 2S	S 3	140		1
7	6 4S	S 4	420		7
8	9 3S	S-1		50	-5
9	8 3S	S 4	170		2

20

♠J976  
♥AQ9  
♦109  
♣QJ52

♠AQ5  
♥10864  
♦J72  
♣A76

N  
W—E  
S

♠1042  
♥K73  
♦K63  
♣K1083

♠K83  
♥J52  
♦AQ854  
♣94

Board (20) Av: NS=0

N-S	E-W	Contract	N-S	E-W	IMP
1	3 Passout				0
3	1 Passout				0
2	4 Passout				0
4	2 Passout				0
5	10 Passout				0
10	5 1NT E 1			90	-3
6	7 Passout				0
7	6 Passout				0
8	9 Passout				0
9	8 Passout				0

21

♠1065  
♥QJ5  
♦84  
♣K9742

♠AK82  
♥876  
♦932  
♣AJ8

N  
W—E  
S

♠QJ4  
♥A109432  
♦Q  
♣1065

♠973  
♥K  
♦AKJ10765  
♣Q3

Board (21) Av: NS=-50

N-S	E-W	Contract	N-S	E-W	IMP
1	3 3H	E 3		140	-3
3	1 3H	E 3		140	-3
2	4 4H	E-1		50	-3
4	2 4H	E-1		50	-3
5	10 4H	E-1		50	-3
10	5 4H	E-1		50	-3
6	7 3H	E 3		140	-3
7	6 4H	E-1		50	-3
8	9 2H	E 4		170	-3
9	8 3H	E 3		140	-3

22

♠743  
♥J963  
♦J862  
♣102

♠KQ1085  
♥K102  
♦74  
♣AK6

N  
W—E  
S

♠962  
♥AQ8  
♦9  
♣QJ9754

♠AJ  
♥754  
♦AKQ1053  
♣83

Board (22) Av: NS=-710

N-S	E-W	Contract	N-S	E-W	IMP
1	3 5Dx	S-4		800	-3
3	1 4S	W 5		650	2
2	4 4S	W 5		650	2
4	2 4S	W 5		650	2
5	10 5Dx	S-4		800	-3
10	5 4S	W 5		650	2
6	7 4S	W 5		650	2
7	6 5Dx	S-4		800	-3
8	9 5Dx	S-4		800	-3
9	8 4S	W 5		650	2

23

♠82  
♥J982  
♦K10652  
♣A4

♠K1043  
♥K106543  
♦7  
♣J2

N  
W—E  
S

♠AQJ65  
♥AK9  
♦93  
♣KQ10987

♠97  
♥AQ7  
♦AQJ84  
♣653

Board (23) Av: NS=-650

N-S	E-W	Contract	N-S	E-W	IMP
1	3 4S	E 5		650	0
3	1 4S	E 5		650	0
2	4 4S	W 5		650	0
4	2 4S	E 5		650	0
5	10 4S	E 5		650	0
10	5 4S	E 5		650	0
6	7 3S	E 5		200	10
7	6 4S	E 5		650	0
8	9 4S	E 5		650	0
9	8 4S	E 5		650	0

24

♠Q432  
♥J85  
♦Q  
♣AKQJ9

♠A87  
♥K964  
♦952  
♣832

N  
W—E  
S

♠K9  
♥Q103  
♦AJ1076  
♣654

♠J1065  
♥A72  
♦K843  
♣107

Board (24) Av: NS=+90

N-S	E-W	Contract	N-S	E-W	IMP
1	3 2S	S 2	110		1
3	1 4S	N 4	420		8
2	4 4S	S-1		50	-4
4	2 2S	S 4	170		2
5	10 2S	S 2	110		1
10	5 3S	N 3	140		2
6	7 4S	S-1		50	-4
7	6 3S	N 4	170		2
8	9 2S	S 2	110		1
9	8 4S	S-1		50	-4

25

♠Q76  
♥KQJ74  
♦K  
♣A963

♠82  
♥10  
♦A973  
♣KQ10842

N  
W—E  
S

♠AKJ43  
♥9832  
♦105  
♣75

♠1095  
♥A65  
♦QJ8642  
♣J

Board (25) Av: NS=+10

N-S	E-W	Contract	N-S	E-W	IMP
1	3 2H	N-1		50	-2
3	1 3H	N-1		50	-2
2	4 2H	N 2	110		3
4	2 4H	N-2		100	-3
5	10 4H	N-3		150	-4
10	5 3H	N-1		50	-2
6	7 2H	N 4	170		4
7	6 4S	E-2	200		5
8	9 2H	N 2	110		3
9	8 4H	N-2		100	-3

26

♠94  
♥KJ9763  
♦5  
♣QJ98

♠Q85  
♥A1052  
♦10763  
♣76

N  
W—E  
S

♠J107  
♥Q84  
♦KQ98  
♣K105

♠AK632  
♥  
♦AJ42  
♣A432

Board (26) Av: NS=+140

N-S	E-W	Contract	N-S	E-W	IMP
1	3 2H	N 3	140		0
3	1 3NT	N-1		100	-6
2	4 3H	N 3	140		0
4	2 3NT	N-1		100	-6
5	10 3NT	N 3	600		10
10	5 2S	S 3	140		0
6	7 2S	S 3	140		0
7	6 3NT	N-2		200	-8
8	9 5C	S 5	600		10
9	8 2S	S 4	170		1

27

♠K  
♥843  
♦8753  
♣A10964

♠J532  
♥AQJ1075  
♦AK4  
♣

N  
W—E  
S

♠109  
♥K92  
♦962  
♣K8732

♠AQ8764  
♥6  
♦QJ10  
♣QJ5

Board (27) Av: NS=-390

N-S	E-W	Contract	N-S	E-W	IMP
1	3 4H	W 4		420	-1
3	1 4H	W 5		450	-2
2	4 4H	W-1		50	10
4	2 4H	W 4		420	-1
5	10 3H	W 4		170	6
10	5 4H	W 4		420	-1
6	7 4H	W 4		420	-1
7	6 4H	W 4		420	-1
8	9 4H	W 5		450	-2
9	8 4H	W 4		420	-1

28

♠KJ1043  
♥9864  
♦  
♣KQ104

♠62  
♥A5  
♦AKJ762  
♣A32

N  
W—E  
S

♠9875  
♥KQ73  
♦10843  
♣J

♠AQ  
♥J102  
♦Q95  
♣98765

Board (28) Av: NS=-300

N-S	E-W	Contract	N-S	E-W	IMP
1	3 3D	W 6		170	4
3	1 5D	W 7		440	-4
2	4 5D	W 7		440	-4
4	2 5D	W 5		400	-3
5	10 4D	W 5		150	4
10	5 3D	W 6		170	4
6	7 5D	W 6		420	-3
7	6 1NT	W 2		120	5
8	9 5D	W 6		420	-3
9	8 3D	W 7		190	3

兵庫県知事杯 OPEN TEAMS Session 6 Flight B 2008年10月13日(月)

**29**

♠J652  
♥K6  
♦A62  
♣K1097

♠Q73 ♠A4  
♥AJ98 ♥Q32  
♦104 ♦QJ73  
♣A854 ♣Q632

♠K1098  
♥10754  
♦K985  
♣J

**30**

♠Q64  
♥AK1062  
♦KQ2  
♣J10

♠K873 ♠A102  
♥854 ♥3  
♦A75 ♦J8643  
♣KQ9 ♣A432

♠J95  
♥QJ97  
♦109  
♣8765

**31**

♠J75  
♥A  
♦A97654  
♣A93

♠AQ1082 ♠643  
♥QJ ♥1074  
♦J103 ♦KQ2  
♣K42 ♣J1065

♠K9  
♥K986532  
♦8  
♣Q87

**32**

♠62  
♥AK10732  
♦K73  
♣98

♠Q853 ♠AJ1074  
♥Q94 ♥5  
♦J1096 ♦5  
♣73 ♣KQJ642

♠K9  
♥J86  
♦AQ842  
♣A105

**33**

♠AK76  
♥853  
♦QJ86  
♣J10

♠8 ♠J10932  
♥KJ974 ♥Q10  
♦A932 ♦54  
♣KQ6 ♣A984

♠Q54  
♥A62  
♦K107  
♣7532

Board (29) Av: NS=+30

N-S	E-W	Contract	N-S	E-W	IMP
1	3	Passout			-1
3	1	Passout			-1
2	4	2NT E-1	100		2
4	2	2NT W 2		120	-4
5	10	Passout			-1
10	5	Passout			-1
6	7	Passout			-1
7	6	Passout			-1
8	9	2NT W-1	100		2
9	8	2NT E-1	100		2

Board (30) Av: NS=-50

N-S	E-W	Contract	N-S	E-W	IMP
1	3	3H N-1		50	0
3	1	3H N-2		100	-2
2	4	4D W-2	100		4
4	2	3H N-1		50	0
5	10	3H N-1		50	0
10	5	1H N 2	110		4
6	7	3C W 3		110	-2
7	6	2S W 2		110	-2
8	9	3H N-1		50	0
9	8	3H N-1		50	0

Board (31) Av: NS=+120

N-S	E-W	Contract	N-S	E-W	IMP
1	3	4Sx E-2		300	5
3	1	3H S 4		170	2
2	4	4D N-2		200	-8
4	2	4H S-1		100	-6
5	10	3H S 3		140	1
10	5	3S E-1		50	-2
6	7	2S E-2		100	-1
7	6	4Sx W-5		1100	14
8	9	2S W-3		150	1
9	8	3H S 3		140	1

Board (32) Av: NS=+50

N-S	E-W	Contract	N-S	E-W	IMP
1	3	5Sx E-2		500	10
3	1	4Sx E 4		790	-13
2	4	3H N 4		170	3
4	2	5S W-2		200	4
5	10	5H N-1		50	-3
10	5	4H N 5		450	9
6	7	4S E-1		100	2
7	6	2Sx W 3		870	-14
8	9	4H N 4		420	9
9	8	3NT S-2		100	-4

Board (33) Av: NS=-130

N-S	E-W	Contract	N-S	E-W	IMP
1	3	2H W 2		110	1
3	1	2S N-2		100	1
2	4	2H W 3		140	0
4	2	2H W 3		140	0
5	10	2H W 3		140	0
10	5	1NT W 2		120	0
6	7	2Sx N-2		300	-5
7	6	1NT S-1		50	2
8	9	2H W 4		170	-1
9	8	1NT W 2		120	0

**34**

♠K5  
♥962  
♦AK975  
♣Q82

♠109874 ♠A63  
♥K105 ♥8  
♦J ♦Q1086432  
♣A963 ♣105

♠QJ2  
♥AQJ743  
♦  
♣KJ74

**35**

♠A963  
♥K10843  
♦QJ  
♣A10

♠1085 ♠KQ42  
♥AJ72 ♥9  
♦K8642 ♦A95  
♣4 ♣K8753

♠J7  
♥Q65  
♦1073  
♣QJ962

**36**

♠Q42  
♥Q653  
♦63  
♣AQ32

♠K107 ♠J86  
♥92 ♥KJ8  
♦AQ10872 ♦K954  
♣J6 ♣1054

♠A953  
♥A1074  
♦J  
♣K987

Board (34) Av: NS=+210

N-S	E-W	Contract	N-S	E-W	IMP
1	3	4H S-1		100	-7
3	1	4H S 4		620	9
2	4	4Sx W-2		300	3
4	2	4H S 4		620	9
5	10	5H S-1		100	-7
10	5	5H S-2		200	-9
6	7	4H S 4		620	9
7	6	5H S-2		200	-9
8	9	4H S-1		100	-7
9	8	4H S 4		620	9

Board (35) Av: NS=-10

N-S	E-W	Contract	N-S	E-W	IMP
1	3	3NT W 3		600	-11
3	1	2H N-1		50	-1
2	4	3D W 3		110	-3
4	2	2H N 2		110	3
5	10	2H N-1		50	-1
10	5	2H N 2		110	3
6	7	2H S-2		100	-3
7	6	3C E-4		400	9
8	9	3D W-1		100	3
9	8	2H N-1		50	-1

Board (36) Av: NS=+80

N-S	E-W	Contract	N-S	E-W	IMP
1	3	3H N 3		140	2
3	1	4H N-1		100	-5
2	4	3H N 4		170	3
4	2	3D E-1		100	1
5	10	2H N 2		110	1
10	5	4H S-1		100	-5
6	7	4D W-2		200	3
7	6	3H N 4		170	3
8	9	2D W 2		90	-5
9	8	3H S 4		170	3