

兵庫県知事杯 OPEN TEAMS Session 1 Flight A 2008年10月11日(土)

1

♠KQ103
♥K9
♦J542
♣A98

♠J75
♥J103
♦K873
♣J63

♠8642
♥42
♦AQ10
♣K754

W N E S

♠A9
♥AQ8765
♦96
♣Q102

2

♠84
♥876
♦63
♣Q98532

♠KQ932
♥5
♦AJ84
♣K76

♠1065
♥AKJ93
♦KQ10
♣J10

W N E S

♠AJ7
♥Q1042
♦9752
♣A4

3

♠KJ43
♥107
♦A97
♣J965

♠Q2
♥K543
♦8543
♣K43

♠A98
♥A862
♦2
♣A10872

W N E S

♠10765
♥QJ9
♦KQJ106
♣Q

4

♠J875
♥653
♦65
♣KQ86

♠10632
♥AJ984
♦AKJ4
♣

♠AK9
♥KQ102
♦Q10
♣AJ107

W N E S

♠Q4
♥7
♦98732
♣95432

5

♠Q1093
♥94
♦AJ76
♣975

♠72
♥J7632
♦Q1098
♣A4

♠J85
♥AK105
♦5
♣QJ1063

W N E S

♠AK64
♥Q8
♦K432
♣K82

Board (1) Av: NS=+470

N-S	E-W	Contract	N-S	E-W	IMP
1	10	4H S 6	480		0
10	1	4H S 5	450		-1
2	9	4H S 6	480		0
9	2	4H S 4	420		-2
3	5	4H S 6	480		0
5	3	4H S 5	450		-1
4	7	3NT N 7	520		2
7	4	4H S 4	420		-2
6	8	3NT S 6	490		1
8	6	4H S 6	480		0

Board (2) Av: NS=-440

N-S	E-W	Contract	N-S	E-W	IMP
1	10	4S W 5	450		0
10	1	4S W 4	420		1
2	9	4S W 5	450		0
9	2	3NT E 5	460		-1
3	5	3NT E 4	430		0
5	3	3NT E 3	400		1
4	7	4S W 5	450		0
7	4	4S W 5	450		0
6	8	4S W 5	450		0
8	6	4S W 5	450		0

Board (3) Av: NS=-110

N-S	E-W	Contract	N-S	E-W	IMP
1	10	2H W 3	140		-1
10	1	2S N-1	50		2
2	9	1NT N 1	90		5
9	2	2H W 3	140		-1
3	5	3H W 4	170		-2
5	3	4Sx N-2	300		-5
4	7	3H W 4	170		-2
7	4	3H W 4	170		-2
6	8	3H W-1	100		5
8	6	2H W 3	140		-1

Board (4) Av: NS=-1670

N-S	E-W	Contract	N-S	E-W	IMP
1	10	6H W 7	1460		5
10	1	6H W 7	1460		5
2	9	7H W 7	2210		-11
9	2	6H W 7	1460		5
3	5	7H W 7	2210		-11
5	3	6H W 7	1460		5
4	7	7H W 7	2210		-11
7	4	6H W 7	1460		5
6	8	6H W 7	1460		5
8	6	Cancel			

Board (5) Av: NS=-10

N-S	E-W	Contract	N-S	E-W	IMP
1	10	3S S-1	100		-3
10	1	1NT S-1	100		-3
2	9	1NT S 2	120		4
9	2	2H W 3	140		-4
3	5	1NT S-4	400		-9
5	3	1NT S 1	90		3
4	7	4S N-2	200		-5
7	4	1NT S 2	120		4
6	8	1NT S 2	120		4
8	6	1NT S 3	150		4

6

♠A7
♥KQ3
♦A832
♣KQ109

♠5
♥42
♦K1097654
♣853

♠Q98
♥A9765
♦QJ
♣AJ6

W N E S

♠KJ106432
♥J108
♦
♣742

7

♠2
♥KJ987
♦Q862
♣J62

♠876
♥A65
♦K953
♣983

♠KJ104
♥1042
♦J4
♣KQ75

W N E S

♠AQ953
♥Q3
♦A107
♣A104

8

♠Q63
♥A1042
♦J87
♣932

♠A4
♥QJ753
♦109
♣J1074

♠J82
♥986
♦4
♣AKQ865

W N E S

♠K10975
♥K
♦AKQ6532
♣

9

♠94
♥Q876
♦J754
♣K75

♠KJ62
♥92
♦K10982
♣109

♠A108753
♥AK
♦A
♣J843

W N E S

♠Q
♥J10543
♦Q63
♣AQ62

10

♠KJ65
♥J9
♦QJ7
♣K984

♠A109
♥Q3
♦K52
♣QJ632

♠Q87432
♥A54
♦104
♣A5

W N E S

♠K108762
♥A9863
♦107
♣

Board (6) Av: NS=+420

N-S	E-W	Contract	N-S	E-W	IMP
1	10	4S S 4	420		0
10	1	4S S 4	420		0
2	9	4S N 4	420		0
9	2	4S S 4	420		0
3	5	4S S 5	450		1
5	3	4S S 4	420		0
4	7	4S S 4	420		0
7	4	3NT N 3	400		-1
6	8	4S S 5	450		1
8	6	4S S 4	420		0

Board (7) Av: NS=+140

N-S	E-W	Contract	N-S	E-W	IMP
1	10	2H N 3	140		0
10	1	2H N 3	140		0
2	9	2NT N 4	180		1
9	2	2C S-1	100		-6
3	5	2H S 3	140		0
5	3	3NT S 3	600		10
4	7	2C S 2	90		-2
7	4	2H S 4	170		1
6	8	2NT N 2	120		-1
8	6	2C S 3	110		-1

Board (8) Av: NS=+510

N-S	E-W	Contract	N-S	E-W	IMP
1	10	5Dx S 6	650		4
10	1	6D S 6	920		9
2	9	3D S 7	190		-8
9	2	5D S 5	400		-3
3	5	3S S 6	230		-7
5	3	4S S 4	420		-3
4	7	5D S 6	420		-3
7	4	5D S 5	400		-3
6	8	6D S 6	920		9
8	6	5Dx S 6	650		4

Board (9) Av: NS=-650

N-S	E-W	Contract	N-S	E-W	IMP
1	10	4S E 5	650		0
10	1	4S E 5	650		0
2	9	4S E 5	650		0
9	2	4S E 5	650		0
3	5	4S E 5	650		0
5	3	4S E 5	650		0
4	7	4S E 5	650		0
7	4	4S E 5	650		0
6	8	5S E 5	650		0
8	6	4S E 5	650		0

Board (10) Av: NS=-210

N-S	E-W	Contract	N-S	E-W	IMP
1	10	3S E 4	170		1
10	1	3NT N-5	500		-7
2	9	4S E-1	100		7
9	2	2S E 4	170		1
3	5	4S E-1	100		7
5	3	4H S-3	300		-3
4	7	3S E 3	140		2
7	4	4S E-1	100		7
6	8	4Sx E 4	790		-11
8	6	4S E 4	620		-9

兵庫県知事杯 OPEN TEAMS Session 1 Flight A 2008年10月11日(土)

11

♠10
♥K832
♦K82
♣AQ1074

♠9432
♥Q5
♦QJ54
♣K82

N
W E
S

♠KQJ8
♥J107
♦1097
♣653

♠A765
♥A964
♦A63
♣J9

12

♠AKQ87
♥Q7
♦963
♣AK2

♠104
♥AJ842
♦AJ
♣Q763

N
W E
S

♠92
♥9653
♦KQ107
♣J85

♠J653
♥K10
♦8542
♣1094

13

♠AKJ1094
♥QJ
♦K1042
♣7

♠8652
♥AK85
♦53
♣653

N
W E
S

♠Q7
♥10743
♦J76
♣AK104

♠3
♥962
♦AQ98
♣QJ982

14

♠Q854
♥KJ98
♦7
♣KQ76

♠KJ73
♥A7643
♦53
♣83

N
W E
S

♠10962
♥2
♦AQ10642
♣52

♠A
♥Q105
♦KJ98
♣AJ1094

15

♠Q1092
♥AKQ7542
♦9
♣7

♠864
♥J6
♦KJ10854
♣63

N
W E
S

♠AKJ3
♥108
♦A32
♣J1042

♠75
♥93
♦Q76
♣AKQ985

Board (11) Av: NS=+480

N-S	E-W	Contract	N-S	E-W	IMP
1	10	4H	N 6	480	0
10	1	4H	N 6	480	0
2	9	4H	N 6	480	0
9	2	4H	N 6	480	0
3	5	4H	N 6	480	0
5	3	4H	N 6	480	0
4	7	4H	N 6	480	0
7	4	4H	N 6	480	0
6	8	4H	N 6	480	0
8	6	4H	N 6	480	0

Board (12) Av: NS=-70

N-S	E-W	Contract	N-S	E-W	IMP
1	10	3S	N-1	100	-1
10	1	3S	N-1	100	-1
2	9	3S	N 3	140	5
9	2	4S	S-2	200	-4
3	5	3S	N-1	100	-1
5	3	3S	N-1	100	-1
4	7	3S	N 3	140	5
7	4	3S	N-1	100	-1
6	8	4S	N-1	100	-1
8	6	3S	N-1	100	-1

Board (13) Av: NS=+170

N-S	E-W	Contract	N-S	E-W	IMP
1	10	2S	N 4	170	0
10	1	4D	N 4	130	-1
2	9	3Hx	W-2	500	8
9	2	2D	N 4	130	-1
3	5	2S	N 3	140	-1
5	3	2S	N 4	170	0
4	7	3S	N 6	230	2
7	4	2S	N 4	170	0
6	8	3S	N 4	170	0
8	6	3H	E-2	200	1

Board (14) Av: NS=+240

N-S	E-W	Contract	N-S	E-W	IMP
1	10	2NT	S 4	180	-2
10	1	3NT	S 4	430	5
2	9	4H	N 4	420	5
9	2	5Cx	S-1	100	-8
3	5	3NT	S 5	460	6
5	3	3C	S 4	130	-3
4	7	6C	S-2	100	-8
7	4	3NT	S 5	460	6
6	8	6NT	S-2	100	-8
8	6	3NT	S 5	460	6

Board (15) Av: NS=+620

N-S	E-W	Contract	N-S	E-W	IMP
1	10	4H	N 4	620	0
10	1	4H	N 4	620	0
2	9	4H	N 4	620	0
9	2	4H	N 4	620	0
3	5	4H	N 4	620	0
5	3	4H	N 4	620	0
4	7	4H	N 5	650	1
7	4	4H	N 4	620	0
6	8	4H	N 4	620	0
8	6	4H	N 4	620	0

16

♠A10
♥K952
♦AK109
♣J87

♠Q85432
♥J104
♦8
♣Q43

N
W E
S

♠K
♥A873
♦J642
♣K1052

♠J976
♥Q6
♦Q753
♣A96

17

♠9
♥KQ972
♦J4
♣KQ653

♠KQJ
♥J108
♦AKQ7
♣AJ9

N
W E
S

♠6
♥A6543
♦9853
♣874

♠A10875432
♥
♦1062
♣102

18

♠82
♥10764
♦K64
♣J1063

♠J9753
♥KJ9
♦A2
♣K95

N
W E
S

♠AQ6
♥5
♦Q109853
♣AQ7

♠K104
♥AQ832
♦J7
♣842

Board (16) Av: NS=+90

N-S	E-W	Contract	N-S	E-W	IMP
1	10	3NT	N-1	50	-4
10	1	2NT	N 2	120	1
2	9	3NT	N 3	400	7
9	2	3NT	N-2	100	-5
3	5	2NT	N 2	120	1
5	3	3NT	N-1	50	-4
4	7	3NT	N 3	400	7
7	4	2NT	N 2	120	1
6	8	2NT	N-1	50	-4
8	6	2NT	N 2	120	1

Board (17) Av: NS=-80

N-S	E-W	Contract	N-S	E-W	IMP
1	10	4Sx	S-3	500	-9
10	1	4S	S-2	100	-1
2	9	2S	S-1	50	1
9	2	3D	E 3	110	-1
3	5	3S	S-2	100	-1
5	3	3S	S-2	100	-1
4	7	3Sx	S-1	100	-1
7	4	2S	S-1	50	1
6	8	2S	N-1	50	1
8	6	4D	W-2	100	5

Board (18) Av: NS=-420

N-S	E-W	Contract	N-S	E-W	IMP
1	10	4S	W 4	420	0
10	1	3NT	W 3	400	1
2	9	3NT	E-1	50	10
9	2	4S	W 4	420	0
3	5	4S	W 4	420	0
5	3	4S	W 4	420	0
4	7	4S	W 4	420	0
7	4	4S	W 4	420	0
6	8	4S	W 4	420	0
8	6	3NT	W 4	430	0

兵庫県知事杯 OPEN TEAMS Session 1 Flight A 2008年10月11日(土)

19

♠ J52
♥ Q84
♦ KQ1092
♣ 87

♠ A10864	N	♠ K9
♥ 10962	W—E	♥ J
♦ J		♦ A864
♣ A65	♠	♣ Q109432

♠ Q73
♥ AK753
♦ 753
♣ KJ

Board (19) Av: NS=-30

N-S	E-W	Contract	N-S	E-W	IMP
1	7 2S	W-1	100		4
7	1 5C	W 5	600		-11
2	8 2S	W-1	100		4
8	2 3H	S-2	100		-2
3	6 4S	W-2	200		6
6	3 2H	S-1	50		-1
4	10 3H	S-3	150		-3
10	4 3S	W-2	200		6
5	9 4S	W 5	200		-5
9	5 3H	S-2	100		-2

20

♠ K106
♥ A32
♦ KQ96
♣ 974

♠ 832	N	♠ Q4
♥ J106	W—E	♥ Q9854
♦ A742		♦ 3
♣ Q63	♠	♣ AK1082

♠ AJ975
♥ K7
♦ J1085
♣ J5

Board (20) Av: NS=+230

N-S	E-W	Contract	N-S	E-W	IMP
1	7 3S	S 3	140		-3
7	1 2S	S 4	170		-2
2	8 4S	S 4	620		9
8	2 3S	S 4	170		-2
3	6 4S	S 4	620		9
6	3 4S	N 4	620		9
4	10 4D	N-1	100		-8
10	4 2S	N-1	100		-8
5	9 3S	S 2	110		-3
9	5 4H	E-1	100		-4

21

♠ 987
♥ J8764
♦ A43
♣ 65

♠ 63	N	♠ AJ1052
♥ AK	W—E	♥ Q9
♦ KQ972		♦ J1085
♣ AKQ4	♠	♣ 83

♠ KQ4
♥ 10532
♦ 6
♣ J10972

Board (21) Av: NS=-390

N-S	E-W	Contract	N-S	E-W	IMP
1	7 6D	W-1	50		10
7	1 3NT	W 5	460		-2
2	8 3NT	W 4	430		-1
8	2 3NT	W 5	460		-2
3	6 3NT	W 4	430		-1
6	3 6D	W-1	50		10
4	10 3NT	W 4	430		-1
10	4 3NT	W 5	460		-2
5	9 3NT	W 5	460		-2
9	5 3NT	E 5	460		-2

22

♠ J54
♥ 873
♦ 863
♣ AJ42

♠ K863	N	♠ AQ9
♥ J4	W—E	♥ A62
♦ 7		♦ AQJ942
♣ K109765	♠	♣ 8

♠ 1072
♥ KQ1095
♦ K105
♣ Q3

Board (22) Av: NS=-220

N-S	E-W	Contract	N-S	E-W	IMP
1	7 3D	E 4	130		3
7	1 3NT	W 5	660		-10
2	8 3D	E 5	150		2
8	2 4D	E-1	100		8
3	6 3D	E 4	130		3
6	3 5D	E 5	600		-9
4	10 3D	E 4	130		3
10	4 3NT	W 3	600		-9
5	9 3D	E 4	130		3
9	5 3NT	E-2	200		9

23

♠ 3
♥ 972
♦ K932
♣ AQJ52

♠ J862	N	♠ K954
♥ KQ85	W—E	♥ A
♦ A		♦ J10865
♣ 10863	♠	♣ K97

♠ AQ107
♥ J10643
♦ Q74
♣ 4

Board (23) Av: NS=+20

N-S	E-W	Contract	N-S	E-W	IMP
1	7 2S	E 2	110		-4
7	1 3S	E-1	100		2
2	8 2H	S 2	110		3
8	2	Passout			-1
3	6 4Hx	S-1	200		-6
6	3 3S	E-1	100		2
4	10 4S	E-2	200		5
10	4 1S	W 2	110		-4
5	9 2S	E 2	110		-4
9	5 4S	E-2	200		5

24

♠ 74
♥ A986
♦ J7654
♣ 92

♠ AQ10653	N	♠ K82
♥ QJ	W—E	♥ K10754
♦ Q9		♦ K3
♣ 753	♠	♣ J64

♠ J9
♥ 32
♦ A1082
♣ AKQ108

Board (24) Av: NS=-30

N-S	E-W	Contract	N-S	E-W	IMP
1	7 2S	W 3	140		-3
7	1 4C	S-1	50		-1
2	8 1NT	S 1	90		3
8	2 5C	S-1	50		-1
3	6 1NT	S 1	90		3
6	3 3S	W-1	50		2
4	10 4C	S-1	50		-1
10	4 3S	W 3	140		-3
5	9 3S	W-1	50		2
9	5 2S	W 2	110		-2

25

♠ A973
♥ J105
♦ 1098
♣ K97

♠ KQ652	N	♠ J
♥ A9	W—E	♥ Q763
♦ A2		♦ 76543
♣ Q542	♠	♣ AJ3

♠ 1084
♥ K842
♦ KQJ
♣ 1086

Board (25) Av: NS=-70

N-S	E-W	Contract	N-S	E-W	IMP
1	7 2C	W-1	100		5
7	1 2C	W 2	90		-1
2	8 2C	W 3	110		-1
8	2 2S	W-1	100		5
3	6 2C	W 3	110		-1
6	3 1NT	N-2	100		-1
4	10 1NT	E 1	90		-1
10	4 2C	W 2	90		-1
5	9 2C	W 2	90		-1
9	5 1S	W 2	110		-1

26

♠ KQ976
♥ 9
♦ K96
♣ Q1093

♠ 1084	N	♠ 5
♥ A1072	W—E	♥ KQ654
♦ J73		♦ A10842
♣ AJ6	♠	♣ 72

♠ AJ32
♥ J83
♦ Q5
♣ K854

Board (26) Av: NS=-20

N-S	E-W	Contract	N-S	E-W	IMP
1	7	Passout			1
7	1 2S	N 4	170		5
2	8 2S	N 3	140		4
8	2 4H	W 4	620		-12
3	6 2S	N 2	110		4
6	3 4S	N-1	100		-2
4	10 4H	W-2	200		6
10	4	Passout			1
5	9 2S	N 4	170		5
9	5 4H	E 5	650		-12

27

♠ J32
♥ J965
♦ 10
♣ AQJ108

♠ 104	N	♠ AQ975
♥ AKQ8432	W—E	♥ 107
♦ J43		♦ K987
♣ 4	♠	♣ 95

♠ K86
♥ 10
♦ AQ652
♣ K7632

Board (27) Av: NS=+80

N-S	E-W	Contract	N-S	E-W	IMP
1	7 4Hx	W-1	100		1
7	1 4H	W-1	50		-1
2	8 4H	W-2	100		1
8	2 4H	W-1	50		-1
3	6 3Hx	W-1	100		1
6	3 5C	S 5	400		8
4	10 4Hx	W-1	100		1
10	4 1NT	N 1	90		0
5	9 4H	W-1	50		-1
9	5 3H	W 3	140		-6

28

♠ AJ10732
♥ K10862
♦ Q
♣ 2

♠ Q8	N	♠ K965
♥ Q73	W—E	♥ AJ9
♦ J1076		♦ 95
♣ K1083	♠	♣ AJ95

♠ 4
♥ 54
♦ AK8432
♣ Q764

Board (28) Av: NS=-210

N-S	E-W	Contract	N-S	E-W	IMP
1	7 2S	N-1	100		3
7	1 3H	N-2	200		0
2	8 3D	S-3	300		-3
8	2 2H	N-1	100		3
3	6 3D	S-3	300		-3
6	3 3H	N-2	200		0
4	10 3D	S-3	300		-3
10	4 3D	S-3	300		-3
5	9 2S	N 2	110		8
9	5 3H	N-2	200		0

兵庫県知事杯 OPEN TEAMS Session 1 Flight A 2008年10月11日(土)

29

♠Q7
♥KQ97
♦KJ10985
♣3

♠A8
♥83
♦A764
♣A10865

♠KJ1054
♥A654
♦K942
♣K942

♠9632
♥J102
♦Q32
♣QJ7

30

♠A2
♥AKQJ953
♦A3
♣75

♠10765
♥107
♦K764
♣AJ9

♠KJ3
♥4
♦QJ2
♣KQ10864

♠Q984
♥862
♦10985
♣32

31

♠AJ4
♥KJ1064
♦Q104
♣76

♠KQ10
♥A98
♦753
♣9843

♠8763
♥Q7532
♦J2
♣AJ

♠952
♥
♦AK986
♣KQ1052

32

♠943
♥A102
♦AK42
♣AK9

♠AQ85
♥Q76
♦J863
♣106

♠J6
♥K95
♦Q1075
♣J852

♠K1072
♥J843
♦9
♣Q743

33

♠1042
♥A63
♦J10765
♣75

♠AJ3
♥10542
♦AQ2
♣KQ2

♠K965
♥QJ7
♦K94
♣A94

♠Q87
♥K98
♦83
♣J10863

Board (29) Av: NS=-450

N-S	E-W	Contract	N-S	E-W	IMP
1	7	3C	E 6	170	7
7	1	6C	W 6	1370	-14
2	8	2NT	W 3	150	7
8	2	6C	W 6	1370	-14
3	6	5C	W 6	620	-5
6	3	3NT	W 3	600	-4
4	10	5C	W 5	600	-4
10	4	3NT	W-2	200	12
5	9	4S	E-1	100	11
9	5	2NT	W 3	150	7

Board (30) Av: NS=+200

N-S	E-W	Contract	N-S	E-W	IMP
1	7	4Sx	W-1	100	-3
7	1	4H	N 4	420	6
2	8	3NT	N-2	100	-7
8	2	4H	N 4	420	6
3	6	4H	N 4	420	6
6	3	4H	N 4	420	6
4	10	4H	N-1	50	-6
10	4	4H	N-1	50	-6
5	9	4H	N 4	420	6
9	5	4H	N-1	50	-6

Board (31) Av: NS=+340

N-S	E-W	Contract	N-S	E-W	IMP
1	7	3NT	N 4	630	7
7	1	3NT	N 3	600	6
2	8	3D	S 5	150	-5
8	2	3H	N-2	200	-11
3	6	5D	S 5	600	6
6	3	3NT	N 4	630	7
4	10	3D	S 5	150	-5
10	4	2NT	N 5	210	-4
5	9	2NT	N 5	210	-4
9	5	2NT	N 4	180	-4

Board (32) Av: NS=+110

N-S	E-W	Contract	N-S	E-W	IMP
1	7	3NT	N-1	50	-4
7	1	3NT	N 3	400	7
2	8	3NT	N 4	430	8
8	2	3NT	N-2	100	-5
3	6	3NT	N 3	400	7
6	3	3NT	N-1	50	-4
4	10	3NT	N-1	50	-4
10	4	2NT	N 2	120	0
5	9	2NT	N 2	120	0
9	5	1NT	N-1	50	-4

Board (33) Av: NS=-460

N-S	E-W	Contract	N-S	E-W	IMP
1	7	3NT	W 5	460	0
7	1	3NT	W 5	460	0
2	8	3NT	W 5	460	0
8	2	3NT	W 5	460	0
3	6	3NT	W 5	460	0
6	3	3NT	E 5	460	0
4	10	3NT	E 5	460	0
10	4	3NT	W 5	460	0
5	9	3NT	W 5	460	0
9	5	3NT	W 5	460	0

34

♠K10987
♥
♦Q963
♣Q976

♠6
♥AKJ2
♦A108742
♣85

♠QJ4
♥10974
♦KJ
♣K432

♠A532
♥Q8653
♦5
♣AJ10

35

♠873
♥K10854
♦K7
♣KQ6

♠6542
♥AJ7
♦J1092
♣A10

♠AKQJ10
♥Q32
♦AQ8
♣87

♠9
♥96
♦6543
♣J95432

36

♠KJ1097
♥Q
♦J1076
♣J95

♠Q832
♥A764
♦52
♣AK6

♠A5
♥KJ10982
♦Q4
♣742

♠64
♥53
♦AK983
♣Q1083

Board (34) Av: NS=+280

N-S	E-W	Contract	N-S	E-W	IMP
1	7	5Dx	W-4	800	11
7	1	3NT	E-1	50	-6
2	8	2S	S 4	170	-3
8	2	4H	E-2	100	-5
3	6	2S	S 2	110	-5
6	3	4S	S 4	620	8
4	10	2S	N 4	170	-3
10	4	2NT	E-1	50	-6
5	9	4D	W-5	250	-1
9	5	4Hx	E-4	800	11

Board (35) Av: NS=-670

N-S	E-W	Contract	N-S	E-W	IMP
1	7	4S	E 6	680	0
7	1	4S	W 5	650	1
2	8	4S	E 5	650	1
8	2	3NT	E 6	690	-1
3	6	6S	W 6	1430	-13
6	3	4S	W 6	680	0
4	10	4S	W 5	650	1
10	4	4S	E 6	680	0
5	9	4S	E 5	650	1
9	5	3NT	W 6	690	-1

Board (36) Av: NS=-290

N-S	E-W	Contract	N-S	E-W	IMP
1	7	4H	E-1	100	9
7	1	4H	E-1	100	9
2	8	4H	E-1	100	9
8	2	4H	E 5	650	-8
3	6	3H	E 3	140	4
6	3	4H	E 4	620	-8
4	10	4H	E 4	620	-8
10	4	4H	E-1	100	9
5	9	4H	E 4	620	-8
9	5	4H	E 4	620	-8

兵庫県知事杯 OPEN TEAMS Session 2 Flight A 2008年10月11日(土)

1

♠65
♥Q9754
♦K93
♣A53

♠J843
♥J106
♦J108
♣642

♠A1072
♥A2
♦A654
♣K97

♠KQ9
♥K83
♦Q72
♣QJ108

2

♠AQJ4
♥K985
♦3
♣10765

♠9765
♥76432
♦K82
♣J

♠K2
♥Q
♦AJ10976
♣Q942

♠1083
♥AJ10
♦Q54
♣AK83

3

♠J53
♥KQJ65
♦AQJ
♣64

♠AK864
♥
♦87
♣AKJ1032

♠Q1072
♥104
♦96432
♣Q7

♠9
♥A98732
♦K105
♣985

4

♠AKQ43
♥765
♦K53
♣J9

♠105
♥J43
♦762
♣KQ1082

♠J9862
♥102
♦84
♣A543

♠7
♥AKQ98
♦AQJ109
♣76

5

♠97
♥7
♦K86542
♣Q1093

♠952
♥QJ1073
♦AJ652

♠A8632
♥AQ1063
♦9
♣K4

♠KQJ1054
♥KJ84
♦A
♣87

Board (1) Av: NS=+60

N-S	E-W	Contract	N-S	E-W	IMP
1	9 2H	N 3	140		2
9	1 1NT	E-1	50		0
2	5 1NT	E-2	100		1
5	2 2S	E-1	50		0
3	7 1NT	E-1	50		0
7	3 1NT	E-1	50		0
4	6 1NT	E-1	50		0
6	4 1NT	E-1	50		0
8	10 1NT	E-1	50		0
10	8 1NT	E-2	100		1

Board (2) Av: NS=-120

N-S	E-W	Contract	N-S	E-W	IMP
1	9 1NT	W 1	90		1
9	1 2NT	S-3	300		-5
2	5 3NT	S-2	200		-2
5	2 3NT	S-2	200		-2
3	7 5C	S-2	200		-2
7	3 1NT	S-1	100		1
4	6 3S	N 3	140		6
6	4 2NT	E-2	200		-2
8	10 3D	E 3	110		0
10	8 2H	N 2	110		6

Board (3) Av: NS=-790

N-S	E-W	Contract	N-S	E-W	IMP
1	9 6S	W 6	1430		-12
9	1 6S	E 6	1430		-12
2	5 5H	N-1	50		12
5	2 6S	E-1	100		13
3	7 5S	W 6	680		3
7	3 5S	E 6	680		3
4	6 6S	W 6	1430		-12
6	4 5S	W 6	680		3
8	10 5S	W 6	680		3
10	8 4S	W 6	680		3

Board (4) Av: NS=+560

N-S	E-W	Contract	N-S	E-W	IMP
1	9 5H	S 5	650		3
9	1 4H	S 5	650		3
2	5 4H	S 5	650		3
5	2 6H	N-1	100		-12
3	7 5H	S 5	650		3
7	3 5H	S 5	650		3
4	6 4H	S 5	650		3
6	4 5H	S-1	100		-12
8	10 6H	S 5	650		3
10	8 4H	S 5	650		3

Board (5) Av: NS=-110

N-S	E-W	Contract	N-S	E-W	IMP
1	9 2H	E-1	50		4
9	1 2H	E 2	110		0
2	5 2H	E 2	110		0
5	2 2H	E 2	110		0
3	7 2H	E 2	110		0
7	3 2H	E 3	140		-1
4	6 2H	E 2	110		0
6	4 2Hx	N-3	800		-12
8	10 3D	E 2	110		0
10	8 2H	E 2	110		0

6

♠843
♥Q982
♦A
♣AQ763

♠A52
♥A10653
♦KQ10
♣J9

♠KQJ97
♥
♦J8753
♣K54

♠106
♥KJ74
♦9642
♣1082

7

♠J3
♥K72
♦Q96
♣J9842

♠K1094
♥84
♦K1053
♣K73

♠Q8752
♥Q105
♦842
♣A6

♠A6
♥AJ963
♦AJ7
♣Q105

8

♠Q1082
♥Q8
♦108754
♣J2

♠KJ54
♥AK1043
♦J
♣Q83

♠7
♥J962
♦A963
♣10765

♠A963
♥75
♦KQ2
♣AK94

9

♠A9
♥87543
♦7
♣K9853

♠Q
♥KJ102
♦AJ98542
♣J

♠642
♥6
♦KQ106
♣AQ1072

♠KJ108753
♥AQ9
♦3
♣64

10

♠63
♥Q1053
♦83
♣KJ743

♠752
♥A98
♦AJ1075
♣52

♠K984
♥KJ762
♦KQ
♣Q6

♠AQJ10
♥4
♦9642
♣A1098

Board (6) Av: NS=-580

N-S	E-W	Contract	N-S	E-W	IMP
1	9 4S	E 5	650		-2
9	1 4S	E 5	650		-2
2	5 4S	E 5	650		-2
5	2 4S	E 5	650		-2
3	7 4S	E 5	650		-2
7	3 5Cx	N-3	500		2
4	6 4S	E 5	650		-2
6	4 4S	W 5	650		-2
8	10 2S	E 5	200		9
10	8 2S	E 5	200		9

Board (7) Av: NS=+90

N-S	E-W	Contract	N-S	E-W	IMP
1	9 1NT	S 1	90		0
9	1 2H	S 3	140		2
2	5 1NT	S 2	120		1
5	2 3C	S 3	110		1
3	7 1NT	S 2	120		1
7	3 1NT	S 1	90		0
4	6 4H	S-1	100		-5
6	4 2H	S 2	110		1
8	10 4H	S-2	200		-7
10	8 3H	S 4	170		2

Board (8) Av: NS=-120

N-S	E-W	Contract	N-S	E-W	IMP
1	9 3H	W 3	140		-1
9	1 3H	E-1	50		5
2	5 3S	N-1	50		2
5	2 3H	W 3	140		-1
3	7 3H	W 3	140		-1
7	3 3S	N-3	150		-1
4	6 3D	N-2	100		1
6	4 3H	E 3	140		-1
8	10 2H	E 3	140		-1
10	8 3H	W 3	140		-1

Board (9) Av: NS=-510

N-S	E-W	Contract	N-S	E-W	IMP
1	9 4Sx	S-2	300		5
9	1 5D	W 5	600		-3
2	5 5D	E 5	600		-3
5	2 5D	E 5	600		-3
3	7 5S	S-2	100		9
7	3 5D	W 5	600		-3
4	6 5H	S-6	300		5
6	4 5Sx	S-3	500		0
8	10 5D	W 5	600		-3
10	8 5Dx	W 5	750		-6

Board (10) Av: NS=+70

N-S	E-W	Contract	N-S	E-W	IMP
1	9 3H	E-2	200		4
9	1 4H	W-4	400		8
2	5 2H	E 2	110		-5
5	2 2NT	N 4	180		3
3	7 4C	N-1	100		-5
7	3 3C	N-1	100		-5
4	6 3Cx	N 3	670		12
6	4 2H	E 2	110		-5
8	10 4H	W 4	620		-12
10	8 3H	E-2	200		4

兵庫県知事杯 OPEN TEAMS Session 2 Flight A 2008年10月11日(土)

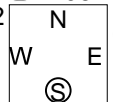
11

♠K105
♥AJ983
♦6
♣A1064

♠QJ8732
♥K
♦QJ92
♣75

♠64
♥Q7
♦K873
♣KQJ93

♠A9
♥106542
♦A1054
♣82



12

♠Q10743
♥96
♦K6
♣AQ96

♠62
♥KQ854
♦Q10875
♣5

♠K5
♥J1073
♦AJ2
♣J843

♠AJ98
♥A2
♦943
♣K1072



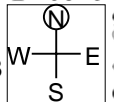
13

♠A107
♥832
♦43
♣A9873

♠K96
♥K96
♦AK108
♣KJ10

♠854
♥J75
♦Q76
♣Q652

♠QJ32
♥AQ104
♦J952
♣4



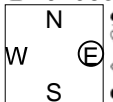
14

♠Q8743
♥10
♦Q3
♣AJ1063

♠KJ9
♥J643
♦K107
♣K97

♠6
♥K8752
♦A965
♣Q54

♠A1052
♥AQ9
♦J842
♣82



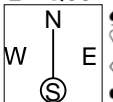
15

♠J10764
♥4
♦AKQ
♣AQ65

♠Q
♥J9876
♦984
♣J873

♠K985
♥AQ2
♦J763
♣104

♠A32
♥K1053
♦1052
♣K92



Board (11) Av: NS=+300

N-S	E-W	Contract	N-S	E-W	IMP
1	9	4H	N 5	450	4
9	1	4H	N 5	450	4
2	5	4H	N 5	450	4
5	2	4H	N 5	450	4
3	7	4Sx	W-3	500	5
7	3	2S	S-2	100	-9
4	6	4H	N 5	450	4
6	4	2S	W-1	50	-6
8	10	2S	W-1	50	-6
10	8	2S	W-1	50	-6

Board (12) Av: NS=+350

N-S	E-W	Contract	N-S	E-W	IMP
1	9	4S	N 4	620	7
9	1	4S	N-1	100	-10
2	5	4S	S 4	620	7
5	2	4S	N 5	650	7
3	7	4S	N 4	620	7
7	3	4S	N 4	620	7
4	6	4S	N-1	100	-10
6	4	6C	S-3	300	-12
8	10	4S	N-1	100	-10
10	8	4S	N 4	620	7

Board (13) Av: NS=-40

N-S	E-W	Contract	N-S	E-W	IMP
1	9	1NTxW	1	180	-4
9	1	2H	S-1	100	-2
2	5	2H	N 2	110	4
5	2	1NT	W-2	200	6
3	7	1NT	W-2	200	6
7	3	1NT	W 1	90	-2
4	6	1NT	W 2	120	-2
6	4	1NT	E 2	120	-2
8	10	1NT	W 2	120	-2
10	8	1NT	W 1	90	-2

Board (14) Av: NS=+160

N-S	E-W	Contract	N-S	E-W	IMP
1	9	Passout			-4
9	1	3S	N 4	170	0
2	5	3S	N 3	140	-1
5	2	4S	S 4	420	6
3	7	4S	N 4	420	6
7	3	3S	N 4	170	0
4	6	Passout			-4
6	4	4S	N-1	50	-5
8	10	4S	N-1	50	-5
10	8	4S	N 4	420	6

Board (15) Av: NS=+340

N-S	E-W	Contract	N-S	E-W	IMP
1	9	4S	N-1	100	-10
9	1	4S	N 4	620	7
2	5	4S	N 4	620	7
5	2	4S	S 4	620	7
3	7	4S	N-2	200	-11
7	3	4S	N-2	200	-11
4	6	4S	N 4	620	7
6	4	4S	N-1	100	-10
8	10	4S	N 4	620	7
10	8	4S	N 4	620	7

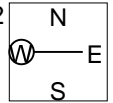
16

♠A9
♥AKJ
♦J854
♣AKQ4

♠KQ62
♥764
♦K6
♣8732

♠103
♥Q10982
♦Q1093
♣105

♠J8754
♥53
♦A72
♣J96



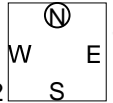
17

♠Q1042
♥Q6
♦J987
♣J109

♠96
♥84
♦652
♣Q86532

♠K
♥AJ10972
♦1043
♣AK4

♠AJ8753
♥K53
♦AKQ
♣7



18

♠KQ732
♥K3
♦10862
♣104

♠10
♥AJ97
♦AQ975
♣Q72

♠AJ94
♥1086
♦K
♣K9853

♠865
♥Q542
♦J43
♣AJ6



Board (16) Av: NS=+440

N-S	E-W	Contract	N-S	E-W	IMP
1	9	3NT	N 6	490	2
9	1	3NT	N 3	400	-1
2	5	3NT	N 5	460	1
5	2	3NT	N 3	400	-1
3	7	3NT	N 5	460	1
7	3	3NT	N 3	400	-1
4	6	3NT	N 4	430	0
6	4	3NT	N 5	460	1
8	10	3NT	N 4	430	0
10	8	3NT	N 5	460	1

Board (17) Av: NS=+450

N-S	E-W	Contract	N-S	E-W	IMP
1	9	4S	N 5	450	0
9	1	4S	S 5	450	0
2	5	4S	S 6	480	1
5	2	4S	S 5	450	0
3	7	4S	N 5	450	0
7	3	4S	S 5	450	0
4	6	4S	N 5	450	0
6	4	4S	S 5	450	0
8	10	4S	S 5	450	0
10	8	3S	S 6	230	-6

Board (18) Av: NS=-380

N-S	E-W	Contract	N-S	E-W	IMP
1	9	2S	N-3	300	2
9	1	3NT	W 5	460	-2
2	5	3NT	E 4	430	-2
5	2	3NT	W 5	460	-2
3	7	3NT	E 3	400	-1
7	3	3NT	W 3	400	-1
4	6	2D	W 3	110	7
6	4	2NT	E 4	180	5
8	10	3NT	W 3	400	-1
10	8	3NT	W 4	430	-2

兵庫県知事杯 OPEN TEAMS Session 3 Flight A 2008年10月12日(日)

1

♠K32
♥AJ10
♦AQ102
♣A102

♠7
♥75432
♦96
♣K9654

♠Q1094
♥K9
♦8743
♣QJ7

♠AJ865
♥Q86
♦KJ5
♣83

2

♠A8432
♥97
♦AQ98
♣A4

♠106
♥AJ108
♦K1053
♣932

♠975
♥652
♦J7
♣108765

♠KQJ
♥KQ43
♦642
♣KQJ

3

♠AJ84
♥A8
♦105
♣AQ1085

♠KQ1032
♥K76
♦K7
♣J43

♠965
♥Q1043
♦QJ632
♣6

♠7
♥J952
♦A984
♣K972

4

♠K9752
♥AK543
♦J
♣J3

♠64
♥QJ8
♦A98742
♣82

♠A83
♥972
♦65
♣A9754

♠QJ10
♥106
♦KQ103
♣KQ106

5

♠A6
♥Q102
♦J42
♣AK1093

♠108532
♥63
♦A987
♣86

♠KQJ4
♥54
♦6
♣QJ7542

♠97
♥AKJ987
♦KQ1053
♣

Board (1) Av: NS=+380

N-S	E-W	Contract	N-S	E-W	IMP
1	6 6S	S-1		50	-10
6	1 6S	S-1		50	-10
2	10 3NT	N 6	490		3
10	2 4S	S 5	450		2
3	8 4S	S 5	450		2
8	3 4S	S 5	450		2
4	9 4S	S 5	450		2
9	4 4S	S 4	420		1
5	7 3NT	N 4	430		2
7	5 4S	S 5	450		2

Board (2) Av: NS=+650

N-S	E-W	Contract	N-S	E-W	IMP
1	6 4S	S 5	650		0
6	1 4S	S 5	650		0
2	10 4S	S 5	650		0
10	2 6S	S 6	1430		13
3	8 4S	S 5	650		0
8	3 4S	S 5	650		0
4	9 4S	S 5	650		0
9	4 3NT	S 5	660		0
5	7 4S	S 5	650		0
7	5 5NT	S 5	660		0

Board (3) Av: NS=+280

N-S	E-W	Contract	N-S	E-W	IMP
1	6 3C	N 5	150		-4
6	1 5C	N 5	400		3
2	10 3NT	N 4	430		4
10	2 3C	N 5	150		-4
3	8 2Sx	W-1	200		-2
8	3 3NT	N-2		100	-9
4	9 3NT	N 3	400		3
9	4 3C	N 5	150		-4
5	7 3NT	N 3	400		3
7	5 3NT	N 3	400		3

Board (4) Av: NS=+620

N-S	E-W	Contract	N-S	E-W	IMP
1	6 4S	N 4	620		0
6	1 3NT	S 3	600		-1
2	10 4S	N 4	620		0
10	2 4S	N 4	620		0
3	8 3NT	S 4	630		0
8	3 4S	N-1		100	-12
4	9 4S	N 4	620		0
9	4 4S	N 4	620		0
5	7 3NT	S 4	630		0
7	5 4S	N 4	620		0

Board (5) Av: NS=+1340

N-S	E-W	Contract	N-S	E-W	IMP
1	6 4Sx	W-2	300		-14
6	1 6H	S 6	1430		3
2	10 5H	S 6	680		-12
10	2 6H	N 6	1430		3
3	8 6H	S 6	1430		3
8	3 6H	S 6	1430		3
4	9 6H	N 6	1430		3
9	4 6H	S 6	1430		3
5	7 6H	N 6	1430		3
7	5 6H	S 6	1430		3

6

♠AQ942
♥AJ964
♦Q6
♣6

♠76
♥832
♦A1072
♣10832

♠KJ3
♥Q105
♦98
♣K9754

♠1085
♥K7
♦KJ543
♣AQJ

7

♠A5
♥8652
♦AQ109
♣QJ6

♠Q6
♥A1074
♦K6532
♣97

♠1082
♥KJ
♦874
♣K10842

♠KJ9743
♥Q93
♦J
♣A53

8

♠A105
♥KQ5
♦A9652
♣K9

♠QJ842
♥8643
♦83
♣Q10

♠K973
♥92
♦J104
♣A872

♠6
♥AJ107
♦KQ7
♣J6543

9

♠K86
♥A5
♦Q9876
♣K108

♠J95
♥KJ62
♦A
♣AQJ65

♠Q72
♥9743
♦KJ5
♣974

♠A1043
♥Q108
♦10432
♣32

10

♠KJ75
♥87652
♦65
♣A6

♠A106
♥QJ43
♦AKJ
♣K103

♠Q92
♥Q1098743
♦QJ8
♣

♠843
♥AK109
♦2
♣97542

Board (6) Av: NS=+360

N-S	E-W	Contract	N-S	E-W	IMP
1	6 4S	N 4	420		2
6	1 5S	N-1		50	-9
2	10 4S	N 4	420		2
10	2 4S	N 4	420		2
3	8 4S	S 4	420		2
8	3 4S	N-2		100	-10
4	9 4S	N 4	420		2
9	4 4S	N 4	420		2
5	7 4S	N 4	420		2
7	5 4S	N 4	420		2

Board (7) Av: NS=+500

N-S	E-W	Contract	N-S	E-W	IMP
1	6 4S	S 4	620		3
6	1 4S	S 4	620		3
2	10 2D	W-4	400		-3
10	2 4S	S-1		100	-12
3	8 4S	S 4	620		3
8	3 3NT	N 3	600		3
4	9 3NT	N 4	630		4
9	4 3NT	N 3	600		3
5	7 4S	S 4	620		3
7	5 4S	S-1		100	-12

Board (8) Av: NS=+430

N-S	E-W	Contract	N-S	E-W	IMP
1	6 3NT	N 4	430		0
6	1 3NT	N 4	430		0
2	10 3NT	N 3	400		-1
10	2 3NT	N 4	430		0
3	8 3NT	N 4	430		0
8	3 3NT	N 4	430		0
4	9 3NT	N 5	460		1
9	4 3NT	N 4	430		0
5	7 5D	S 5	400		-1
7	5 3NT	N 4	430		0

Board (9) Av: NS=+40

N-S	E-W	Contract	N-S	E-W	IMP
1	6 3H	E-1	100		2
6	1 3H	E-1	100		2
2	10 3H	W-2	200		4
10	2 3NT	E-1	100		2
3	8 3H	E-2	200		4
8	3 2H	E 2		110	-4
4	9 3D	N-1		50	-3
9	4 3H	E-1	100		2
5	7 2NT	N-3		150	-5
7	5 2H	E 2		110	-4

Board (10) Av: NS=-620

N-S	E-W	Contract	N-S	E-W	IMP
1	6 3NT	W 5		660	-1
6	1 3NT	W 5		660	-1
2	10 3NT	W 3		600	1
10	2 6D	E-1		100	12
3	8 5D	E 5		600	1
8	3 5D	E 5		600	1
4	9 3NT	W 3		600	1
9	4 3NT	W 4		630	0
5	7 5D	E 5		600	1
7	5 3NT	W 4		630	0

兵庫県知事杯 OPEN TEAMS Session 3 Flight A 2008年10月12日(日)

11

♠3
♥A86
♦9853
♣AK542

♠K62
♥KQ743
♦AJ7
♣96

N ♠QJ10954
W ♥J1095
E ♠6
S ♣J3

♠A87
♥2
♦KQ1042
♣Q1087

Board (11) Av: NS=+310

N-S	E-W	Contract	N-S	E-W	IMP
1	6 5C	N 5	400		3
6	1 5D	S 5	400		3
2	10 5Dx	S 5	550		6
10	2 4S	W-1	50		-6
3	8 6D	S-1		50	-8
8	3 5D	S 5	400		3
4	9 5Hx	W-3	500		5
9	4 2H	W 2		110	-9
5	7 5C	S 5	400		3
7	5 5D	S 5	400		3

12

♠Q53
♥KJ10873
♦K102
♣5

♠K86
♥Q952
♦A65
♣K64

N ♠J7
W ♥A
E ♠Q9843
S ♣AQ1093

♠A10942
♥64
♦J7
♣J872

Board (12) Av: NS=-360

N-S	E-W	Contract	N-S	E-W	IMP
1	6 3NT	W 4	430		-2
6	1 3Sx	S-2	500		-4
2	10 3NT	W 5	460		-3
10	2 3NT	W 3	400		-1
3	8 3NT	W 3	400		-1
8	3 3NT	W 3	400		-1
4	9 3NT	W 3	400		-1
9	4 3NT	W-1	50		9
5	7 3NT	W-1	50		9
7	5 3NT	W 3	400		-1

13

♠85
♥4
♦KQJ95
♣J10742

♠76
♥AK86
♦1063
♣KQ63

N ♠AQ9432
W ♥75
E ♠A8
S ♣A98

♠KJ10
♥QJ10932
♦742
♣5

Board (13) Av: NS=-40

N-S	E-W	Contract	N-S	E-W	IMP
1	6 5S	E-1	100		4
6	1 3NT	W-2	200		6
2	10 3NT	W-2	200		6
10	2 4S	E-1	100		4
3	8 3NT	W-2	200		6
8	3 4S	E 5		650	-12
4	9 4S	E-1	100		4
9	4 4S	E 4		620	-11
5	7 3NT	W-2	200		6
7	5 4S	E 4		620	-11

14

♠98432
♥J4
♦A9742
♣Q

♠1065
♥AK987
♦3
♣5432

N ♠KQ7
W ♥Q2
E ♠KQ1065
S ♣KJ10

♠AJ
♥10653
♦J8
♣A9876

Board (14) Av: NS=+40

N-S	E-W	Contract	N-S	E-W	IMP
1	6 3NT	E-4	200		4
6	1 2Sx	N-2		300	-8
2	10 2Dxx	W-1	200		4
10	2 2S	N-1		50	-3
3	8 2H	E-2	100		2
8	3 2H	E 2		110	-4
4	9 2H	W-2	100		2
9	4 2S	N-2		100	-4
5	7 2H	E-2	100		2
7	5 2H	E-1	50		0

15

♠Q
♥7642
♦8652
♣AK32

♠KJ87
♥3
♦QJ10973
♣86

N ♠A6543
W ♥J10985
E ♠4
S ♣Q7

♠1092
♥AKQ
♦AK
♣J10954

Board (15) Av: NS=+630

N-S	E-W	Contract	N-S	E-W	IMP
1	6 3NT	S 3	600		-1
6	1 3NT	S 4	630		0
2	10 3NT	S 4	630		0
10	2 3NT	S 4	630		0
3	8 3NT	S 4	630		0
8	3 2D	E-2	100		-11
4	9 5C	S 6	620		0
9	4 3NT	S 4	630		0
5	7 3NT	N 4	630		0
7	5 3NT	S 4	630		0

16

♠AJ65
♥84
♦Q9
♣Q10742

♠2
♥AK1092
♦A1084
♣A96

N ♠KQ10943
W ♥Q3
E ♠J6
S ♣853

♠87
♥J765
♦K7532
♣KJ

Board (16) Av: NS=-130

N-S	E-W	Contract	N-S	E-W	IMP
1	6 3H	W 3	140		0
6	1 2S	E 3	140		0
2	10 2S	E 3	140		0
10	2 2S	E 3	140		0
3	8 2H	W 2	110		1
8	3 2S	E 2	110		1
4	9 2S	E 4	170		-1
9	4 2H	W 2	110		1
5	7 2S	E 2	110		1
7	5 2H	W 3	140		0

17

♠AQ1064
♥6
♦AKJ62
♣64

♠32
♥K53
♦Q983
♣AK108

N ♠9875
W ♥984
E ♠1075
S ♣952

♠KJ
♥AQJ1072
♦4
♣QJ73

Board (17) Av: NS=+440

N-S	E-W	Contract	N-S	E-W	IMP
1	6 3Cx	E-6	1400		14
6	1 3NT	S 4	430		0
2	10 4H	S 5	450		0
10	2 4H	S 4	420		-1
3	8 4S	N-1		50	-10
8	3 3NT	N 5	460		1
4	9 3NT	S 5	460		1
9	4 4S	N 4	420		-1
5	7 3NT	S 5	460		1
7	5 4S	N 4	420		-1

18

♠7653
♥A742
♦KQJ7
♣A

♠A104
♥KQ98
♦1043
♣J87

N ♠QJ9
W ♥10
E ♠865
S ♣KQ10965

♠K82
♥J653
♦A92
♣432

Board (18) Av: NS=-200

N-S	E-W	Contract	N-S	E-W	IMP
1	6 3Hx	N-1		200	0
6	1 3NT	W-2	100		7
2	10 4H	S-4	400		-5
10	2 1NT	E 2	120		2
3	8 3C	E-1		50	6
8	3 3H	S-3		300	-3
4	9 4H	S-4	400		-5
9	4 2H	S-1	100		3
5	7 4H	S-3	300		-3
7	5 3H	S-2	200		0

兵庫県知事杯 OPEN TEAMS Session 4 Flight A 2008年10月12日(日)

1

♠1053
♥K8754
♦QJ5
♣95

♠AK972 (N)
♥J8
♦Q2
♣AK108764

♠Q64
♥A109
♦K6432
♣J3

♠J8
♥Q2
♦A10
♣AK108764

♠Q64
♥A109
♦K6432
♣J3

2

♠K762
♥86
♦432
♣10963

♠AJ109843 (N)
♥AJ3
♦5
♣J8

♠Q5
♥742
♦AKQ1087
♣54

♠KQ1095
♥J96
♦AKQ72

♠AJ109843
♥AJ3
♦5
♣J8

♠Q5
♥742
♦AKQ1087
♣54

3

♠J5
♥KJ7
♦Q109653
♣K3

♠832 (N)
♥AQ1093
♦82
♣A107

♠Q64
♥842
♦AK4
♣Q864

♠AK1097
♥65
♦J7
♣J952

♠832
♥AQ1093
♦82
♣A107

♠Q64
♥842
♦AK4
♣Q864

4

♠J10972
♥J6
♦KQ2
♣J53

♠AK3 (N)
♥105
♦A1086
♣9872

♠85
♥K43
♦J754
♣AKQ10

♠Q64
♥AQ9872
♦93
♣64

♠AK3
♥105
♦A1086
♣9872

♠85
♥K43
♦J754
♣AKQ10

5

♠A82
♥J93
♦AK9
♣J942

♠765 (N)
♥K10864
♦QJ
♣A83

♠KQJ10
♥7
♦8632
♣KQ107

♠943
♥AQ52
♦10754
♣65

♠765
♥K10864
♦QJ
♣A83

♠KQJ10
♥7
♦8632
♣KQ107

Board (1) Av: NS=-420

N-S	E-W	Contract	N-S	E-W	IMP
1	8	3NT W 5	460	-1	
8	1	3C E 5	150	-7	
2	7	3NT W 5	460	-1	
7	2	3NT E 5	460	-1	
3	9	3NT E 4	430	0	
9	3	3NT E 6	490	-2	
4	5	3NT W 4	430	0	
5	4	3NT E 5	460	-1	
6	10	3C E 4	130	7	
10	6	4S E 6	480	-2	

Board (2) Av: NS=-480

N-S	E-W	Contract	N-S	E-W	IMP
1	8	4H W 6	480	0	
8	1	4H W 6	480	0	
2	7	4H W 6	480	0	
7	2	6H W 6	980	-11	
3	9	4H W 6	480	0	
9	3	4H W 6	480	0	
4	5	4S E 4	420	2	
5	4	4H W 6	480	0	
6	10	4H W 6	480	0	
10	6	4H W 6	480	0	

Board (3) Av: NS=-80

N-S	E-W	Contract	N-S	E-W	IMP
1	8	2S W 2	110	-1	
8	1	3D N-1	50	1	
2	7	3D N-1	50	1	
7	2	2S S-6	300	-6	
3	9	Passout		2	
9	3	3D N-2	100	-1	
4	5	2S W 3	140	-2	
5	4	Passout		2	
6	10	2C N-3	150	-2	
10	6	Passout		2	

Board (4) Av: NS=-180

N-S	E-W	Contract	N-S	E-W	IMP
1	8	2H W 3	140	1	
8	1	3NT S-5	500	-8	
2	7	3NT S-2	200	-1	
7	2	2H W 3	140	1	
3	9	3D S-1	100	2	
9	3	3NTxS-5	1400	-15	
4	5	2H W 3	140	1	
5	4	3D S-1	100	2	
6	10	2H W 3	140	1	
10	6	2H W 2	110	2	

Board (5) Av: NS=+130

N-S	E-W	Contract	N-S	E-W	IMP
1	8	4C N 5	150	1	
8	1	4C N 5	150	1	
2	7	4C N 4	130	0	
7	2	3NT N-2	200	-8	
3	9	3NT N-2	200	-8	
9	3	4S N-2	200	-8	
4	5	5C N 5	600	10	
5	4	3H E-2	100	-1	
6	10	5C N 5	600	10	
10	6	3Hx E-2	300	5	

6

♠43
♥AQ763
♦A
♣Q10984

♠J (N)
♥8542
♦QJ7642
♣J5

♠K975
♥KJ10
♦K85
♣K76

♠AQ10862
♥9
♦1093
♣A32

♠J
♥8542
♦QJ7642
♣J5

♠K975
♥KJ10
♦K85
♣K76

7

♠K92
♥K8
♦K10973
♣AK9

♠J643 (N)
♥A74
♦A
♣Q10854

♠Q87
♥QJ652
♦J4
♣J63

♠A105
♥1093
♦Q8652
♣72

♠J643
♥A74
♦A
♣Q10854

♠Q87
♥QJ652
♦J4
♣J63

8

♠AQ6542
♥Q
♦A
♣K10642

♠K98 (N)
♥J9854
♦J7
♣A97

♠J1073
♥A76
♦KQ86
♣J8

♠K1032
♥1095432
♦Q53

♠K98
♥J9854
♦J7
♣A97

♠J1073
♥A76
♦KQ86
♣J8

9

♠76
♥8
♦K874
♣AQ10862

♠1098 (N)
♥6543
♦AJ653
♣3

♠AKJ4
♥Q9
♦1092
♣KJ97

♠Q532
♥AKJ1072
♦Q
♣54

♠1098
♥6543
♦AJ653
♣3

♠AKJ4
♥Q9
♦1092
♣KJ97

10

♠85
♥AK3
♦J54
♣QJ1084

♠7432 (N)
♥J1052
♦A82
♣K5

♠AQ
♥Q87
♦K10763
♣972

♠KJ1096
♥964
♦Q9
♣A63

♠7432
♥J1052
♦A82
♣K5

♠AQ
♥Q87
♦K10763
♣972

Board (6) Av: NS=+430

N-S	E-W	Contract	N-S	E-W	IMP
1	8	4H N 4	420	0	
8	1	4H N 5	450	1	
2	7	4H N 5	450	1	
7	2	4H N 5	450	1	
3	9	5C S-1	50	-10	
9	3	3NT S 5	460	1	
4	5	4H N 5	450	1	
5	4	4H N 4	420	0	
6	10	3NT S 3	400	-1	
10	6	4H N 4	420	0	

Board (7) Av: NS=+30

N-S	E-W	Contract	N-S	E-W	IMP
1	8	2H N 4	170	4	
8	1	2H N-1	100	-4	
2	7	2H N 3	140	3	
7	2	2H N-1	100	-4	
3	9	2H N 4	170	4	
9	3	3NT N-1	100	-4	
4	5	2H N 4	170	4	
5	4	2H N-1	100	-4	
6	10	3NT N-2	200	-6	
10	6	2H N 3	140	3	

Board (8) Av: NS=+450

N-S	E-W	Contract	N-S	E-W	IMP
1	8	4S N 5	450	0	
8	1	5S N 5	450	0	
2	7	5S N 5	450	0	
7	2	4S N 5	450	0	
3	9	6S N-1	50	-11	
9	3	4S N 5	450	0	
4	5	5S N 5	450	0	
5	4	4S N 5	450	0	
6	10	5S N 5	450	0	
10	6	4S N 5	450	0	

Board (9) Av: NS=+20

N-S	E-W	Contract	N-S	E-W	IMP
1	8	5C N 5	400	9	
8	1	5C S-2	100	-3	
2	7	5C S-3	150	-5	
7	2	5C S-2	100	-3	
3	9	3NT S 3	400	9	
9	3	5Cx S-2	300	-8	
4	5	4C N-1	50	-2	
5	4	4H W-1	100	2	
6	10	2NT S 3	150	4	
10	6	5C S-2	100	-3	

Board (10) Av: NS=-120

N-S	E-W	Contract	N-S	E-W	IMP
1	8	Passout		3	
8	1	4C N-2	200	-2	
2	7	3S W 3	140	-1	
7	2	2S W 3	140	-1	
3	9	3NT S-2	200	-2	
9	3	3S W 3	140	-1	
4	5	4C N-2	200	-2	
5	4	Passout		3	
6	10	2S W 2	110	0	
10	6	3S W-1	100	6	

兵庫県知事杯 OPEN TEAMS Session 4 Flight A 2008年10月12日(日)

11

♠10753
♥108653
♦102
♣87

♠842
♥K
♦Q943
♣AKQJ4

N E
W S

♠AQ
♥AQJ42
♦J65
♣1032

♠KJ96
♥97
♦AK87
♣965

12

♠KQ86
♥KJ10
♦A97
♣K53

♠93
♥Q982
♦QJ2
♣AQ104

N E
W S

♠J10742
♥3
♦K65
♣9862

♠A5
♥A7654
♦10843
♣J7

13

♠Q653
♥A1073
♦K832
♣9

♠J104
♥K985
♦J10
♣8764

N E
W S

♠A972
♥J64
♦65
♣AQJ10

♠K8
♥Q2
♦AQ974
♣K532

14

♠7642
♥J32
♦Q1032
♣96

♠A9
♥AK1087
♦J6
♣QJ107

N E
W S

♠J
♥Q964
♦A875
♣K842

♠KQ10853
♥5
♦K94
♣A53

15

♠Q1063
♥AQ6
♦KQ
♣J752

♠752
♥J32
♦J432
♣K86

N E
W S

♠AJ4
♥987
♦A10986
♣104

♠K98
♥K1054
♦75
♣AQ93

Board (11) Av: NS=-450

N-S	E-W	Contract	N-S	E-W	IMP
1	8	3NT W 5		460	0
8	1	3NT E 5		460	0
2	7	3NT W 4		430	1
7	2	3NT E 4		430	1
3	9	3NT W 5		460	0
9	3	3NT W 4		430	1
4	5	3NT W 5		460	0
5	4	3NT E 5		460	0
6	10	3C W 4		130	8
10	6	3NT W 6		490	-1

Board (12) Av: NS=+80

N-S	E-W	Contract	N-S	E-W	IMP
1	8	3NT N 3		600	11
8	1	4H N-1		100	-5
2	7	4H N-1		100	-5
7	2	4H N-1		100	-5
3	9	4H N 4		620	11
9	3	4H N-1		100	-5
4	5	3NT N 3		600	11
5	4	4H N-1		100	-5
6	10	4H N-2		200	-7
10	6	4H N-1		100	-5

Board (13) Av: NS=+110

N-S	E-W	Contract	N-S	E-W	IMP
1	8	3D S 5		150	1
8	1	3NT S-1		100	-5
2	7	3D S 4		130	1
7	2	3D S 5		150	1
3	9	3D S 5		150	1
9	3	2D S 4		130	1
4	5	3D S 4		130	1
5	4	3NT S-1		100	-5
6	10	3NT S 3		600	10
10	6	3D S 5		150	1

Board (14) Av: NS=-400

N-S	E-W	Contract	N-S	E-W	IMP
1	8	5H W 5		450	-2
8	1	4H W 5		450	-2
2	7	4H W 5		450	-2
7	2	4H W 5		450	-2
3	9	4H W 5		450	-2
9	3	4Sx S-2		300	3
4	5	4Sx S-1		100	7
5	4	4H W 5		450	-2
6	10	3H W 5		200	5
10	6	4H W 5		450	-2

Board (15) Av: NS=-70

N-S	E-W	Contract	N-S	E-W	IMP
1	8	3NT N-2		200	-4
8	1	3NT N-2		200	-4
2	7	3NT S-3		300	-6
7	2	3NT S-2		200	-4
3	9	3NT S-2		200	-4
9	3	3NT S-1		100	-1
4	5	3NT S 4		630	12
5	4	3NT S-2		200	-4
6	10	4S N-1		100	-1
10	6	4S N 4		620	12

16

♠QJ10832
♥AJ874
♦86
♣

♠75
♥Q95
♦Q107
♣98652

N E
W S

♠K6
♥K2
♦A5432
♣KQ104

♠A94
♥1063
♦KJ9
♣AJ73

17

♠K3
♥952
♦J98632
♣72

♠AQJ6
♥QJ104
♦KQ107
♣5

N E
W S

♠42
♥A87
♦A
♣KQJ10964

♠109875
♥K63
♦54
♣A83

18

♠J92
♥A7642
♦103
♣1063

♠76
♥Q109
♦J985
♣J985

N E
W S

♠AQ4
♥KJ83
♦AQ
♣AKQ2

♠K10853
♥5
♦K7642
♣74

Board (16) Av: NS=+270

N-S	E-W	Contract	N-S	E-W	IMP
1	8	4S N 4		420	4
8	1	2S N 4		170	-3
2	7	3H S 4		170	-3
7	2	4S N 4		420	4
3	9	2NT E-1		100	-5
9	3	2S N 6		230	-1
4	5	3Cx E-1		200	-2
5	4	2C N-3		150	-9
6	10	4S N 4		420	4
10	6	4S N 4		420	4

Board (17) Av: NS=-200

N-S	E-W	Contract	N-S	E-W	IMP
1	8	3NT W 5		460	-6
8	1	6NT W-1		50	6
2	7	6NT W-4		200	9
7	2	6NT W-1		50	6
3	9	3NT W 6		490	-7
9	3	6NT W-1		50	6
4	5	3NT W 5		460	-6
5	4	6NT W-2		100	7
6	10	3NT W 5		460	-6
10	6	3NT W 5		460	-6

Board (18) Av: NS=-450

N-S	E-W	Contract	N-S	E-W	IMP
1	8	3NT E 4		430	1
8	1	3NT E 5		460	0
2	7	3NT E 4		430	1
7	2	3NT E 5		460	0
3	9	3NT E 5		460	0
9	3	3NT E 5		460	0
4	5	3NT E 5		460	0
5	4	3NT E 4		430	1
6	10	2Sx S-1		200	6
10	6	3NT E 4		430	1

兵庫県知事杯 OPEN TEAMS Session 4 Flight A 2008年10月12日(日)

19

♠Q63
♥1097
♦K854
♣Q106

♠A75
♥KQJ852
♦QJ
♣52

N
W—E
S

♠10842
♥A6
♦A10962
♣84

♠KJ9
♥43
♦73
♣AKJ973

20

♠AQ
♥KJ85
♦A1086
♣862

♠K76542
♥
♦KJ42
♣1074

N
W—E
S

♠J83
♥AQ642
♦53
♣AQJ

♠109
♥10973
♦Q97
♣K953

21

♠J983
♥A54
♦K963
♣K3

♠64
♥QJ3
♦Q542
♣AQJ8

N
W—E
S

♠AK107
♥K1076
♦J107
♣97

♠Q52
♥982
♦A8
♣106542

22

♠KJ532
♥102
♦

♠874
♥AKJ97
♦1052
♣A2

N
W—E
S

♠J108543
♥Q6
♦Q864
♣QJ763

♠A109
♥53
♦AK984
♣KQ7

23

♠108742
♥J
♦Q108
♣K872

♠J3
♥Q10654
♦63
♣J653

N
W—E
S

♠Q
♥A98732
♦K9754
♣A

♠AK965
♥K
♦AJ2
♣Q1094

Board (19) Av: NS=-120

N-S	E-W	Contract	N-S	E-W	IMP
1	5	3C S-1		50	2
5	1	4H W 4	620		-11
2	6	3D E 4	130		0
6	2	3C N-1	50		2
3	10	2H W 3	140		-1
10	3	3H W 3	140		-1
4	8	3H W 4	170		-2
8	4	3H W 3	140		-1
7	9	3H W 3	140		-1
9	7	3C S-1	50		2

Board (20) Av: NS=-40

N-S	E-W	Contract	N-S	E-W	IMP
1	5	2C E-3	300		8
5	1	4Sx W-1	200		6
2	6	4S W-1	100		4
6	2	2S W 3	140		-3
3	10	3S W 4	170		-4
10	3	3S E 3	140		-3
4	8	4S W-1	100		4
8	4	2S W 3	140		-3
7	9	3S W 3	140		-3
9	7	2S W 3	140		-3

Board (21) Av: NS=-120

N-S	E-W	Contract	N-S	E-W	IMP
1	5	1NT E 2	120		0
5	1	1S N-1	100		1
2	6	2Cx S-2	500		-9
6	2	3NT E 3	400		-7
3	10	3NT E-2	100		6
10	3	3NT E-1	50		5
4	8	Passout			3
8	4	2H W 3	150		-1
7	9	2H W 3	140		-1
9	7	1NT E 2	120		0

Board (22) Av: NS=+140

N-S	E-W	Contract	N-S	E-W	IMP
1	5	4S S-1	50		-5
5	1	4S N-1	50		-5
2	6	2S S 3	140		0
6	2	4S S 4	420		7
3	10	2S S 5	200		2
10	3	2S S 3	140		0
4	8	2S S 4	170		1
8	4	2S S 4	170		1
7	9	2S S 3	140		0
9	7	2S S 4	170		1

Board (23) Av: NS=+450

N-S	E-W	Contract	N-S	E-W	IMP
1	5	4S S 4	620		5
5	1	5S S-1	100		-11
2	6	4S S 4	620		5
6	2	5S S 5	650		5
3	10	5Hx W-1	200		-6
10	3	5H W-1	100		-8
4	8	4S S 4	620		5
8	4	4S S 4	620		5
7	9	4S S 5	650		5
9	7	5Hx E-1	200		-6

24

♠98
♥9754
♦A862
♣A109

♠754
♥KQJ8
♦J74
♣763

N
W—E
S

♠KQ1032
♥A63
♦Q10
♣J85

♠AJ6
♥102
♦K953
♣KQ42

Board (24) Av: NS=+100

N-S	E-W	Contract	N-S	E-W	IMP
1	5	2S E-2	100		0
5	1	1NT W-1	50		-2
2	6	1NT W-2	100		0
6	2	2S E-2	100		0
3	10	3D N 3	110		0
10	3	2S E-2	100		0
4	8	2S E-2	100		0
8	4	2S E-2	100		0
7	9	2S E-3	150		2
9	7	3D N 3	110		0

25

♠J
♥A64
♦K1065
♣AQ1074

♠KQ876
♥Q95
♦Q9
♣952

N
W—E
S

♠A1043
♥K1087
♦A7
♣KJ6

♠952
♥J32
♦J8432
♣83

Board (25) Av: NS=-610

N-S	E-W	Contract	N-S	E-W	IMP
1	5	4S E 4	620		0
5	1	3NT E-2	200		13
2	6	4S W 5	650		-1
6	2	5Dx S-3	500		3
3	10	4S E 5	650		-1
10	3	4S W 4	620		0
4	8	4S W 5	650		-1
8	4	4S E 4	620		0
7	9	4S W 4	620		0
9	7	4S E 4	620		0

26

♠K97
♥1062
♦983
♣Q754

♠A4
♥K87
♦Q74
♣AKJ82

N
W—E
S

♠Q65
♥AJ9
♦A10652
♣93

♠J10832
♥Q543
♦KJ
♣106

Board (26) Av: NS=-640

N-S	E-W	Contract	N-S	E-W	IMP
1	5	3NT W 4	630		0
5	1	3NT W 4	630		0
2	6	3NT W 3	600		1
6	2	3NT E 4	630		0
3	10	3NT W 6	690		-2
10	3	3NT E 5	660		-1
4	8	3NT W 3	600		1
8	4	3NT W 6	690		-2
7	9	3NT W 4	630		0
9	7	3NT W 5	660		-1

27

♠AJ63
♥K964
♦Q76
♣75

♠K9
♥83
♦K1042
♣AKJ82

N
W—E
S

♠542
♥72
♦85
♣Q109643

♠Q1087
♥AQJ105
♦AJ93
♣

Board (27) Av: NS=+550

N-S	E-W	Contract	N-S	E-W	IMP
1	5	5H N 6	480		-2
5	1	4H S 6	480		-2
2	6	4H S 6	480		-2
6	2	6H S 6	980		10
3	10	6H S 6	980		10
10	3	5H S 6	480		-2
4	8	5H S 6	480		-2
8	4	5H S 6	480		-2
7	9	5H S 6	480		-2
9	7	5Cx W-3	500		-2

28

♠A743
♥AJ5
♦A32
♣AK2

♠K85
♥10843
♦J76
♣976

N
W—E
S

♠QJ962
♥Q96
♦Q
♣QJ104

♠10
♥K72
♦K109854
♣853

Board (28) Av: NS=+540

N-S	E-W	Contract	N-S	E-W	IMP
1	5	3NT N 4	630		3
5	1	3NT N 5	660		3
2	6	3NT N 3	600		2
6	2	3NT N 4	630		3
3	10	3NT N 4	630		3
10	3	3NT N 4	630		3
4	8	3NT N 4	630		3
8	4	3NT N 4	630		3
7	9	6D S-2	200		-12
9	7	5D S-1	100		-12

兵庫県知事杯 OPEN TEAMS Session 4 Flight A 2008年10月12日(日)

29 ♠QJ10932
♥9
♦10832
♣A5

♠76 ♠A
♥KJ82 ♥Q10753
♦Q6 ♦A75
♣Q8642 ♣K1093

♠K854
♥A64
♦KJ94
♣J7

30 ♠10 ♠AK983
♥AK85 ♥1032
♦764 ♦Q52
♣KQ1065 ♣92

♠QJ742 ♠AK983
♥64 ♥1032
♦AK93 ♦Q52
♣43 ♣92

♠65
♥QJ97
♦J108
♣AJ87

31 ♠Q86 ♠AJ2
♥Q10876 ♥J
♦A10 ♦876
♣KQ2 ♣A108764

♠10975 ♠AJ2
♥532 ♥J
♦Q942 ♦876
♣93 ♣A108764

♠K43
♥AK94
♦KJ53
♣J5

32 ♠64 ♠J9
♥Q72 ♥AK543
♦J103 ♦Q4
♣AQ1094 ♣8632

♠KQ72 ♠J9
♥1096 ♥AK543
♦K9862 ♦Q4
♣7 ♣8632

♠A10853
♥J8
♦A75
♣KJ5

33 ♠K32 ♠A985
♥KQ ♥1074
♦8743 ♦Q1092
♣KJ52 ♣104

♠106 ♠A985
♥AJ863 ♥1074
♦K ♦Q1092
♣AQ763 ♣104

♠QJ74
♥952
♦AJ65
♣98

Board (29) Av: NS=-180

N-S	E-W	Contract	N-S	E-W	IMP
1	5	4S N-1	100		2
5	1	4Sx N-1	200		-1
2	6	4S N-1	100		2
6	2	4S N-2	200		-1
3	10	4S S-2	200		-1
10	3	4H E 4	620		-10
4	8	3S N 4	170		8
8	4	4S E-1	100		7
7	9	4S N-1	100		2
9	7	4H E 4	620		-10

Board (30) Av: NS=-40

N-S	E-W	Contract	N-S	E-W	IMP
1	5	3S W 3	140		-3
5	1	3S W 4	170		-4
2	6	4S W-1	50		3
6	2	3S W 3	140		-3
3	10	4Sx W 4	590		-11
10	3	4Sx W-1	100		4
4	8	4H N 4	420		10
8	4	4S W 3	140		-3
7	9	4S W-1	50		3
9	7	4S W-1	50		3

Board (31) Av: NS=+650

N-S	E-W	Contract	N-S	E-W	IMP
1	5	4H S 5	650		0
5	1	4H S 5	650		0
2	6	4H S 5	650		0
6	2	4H S 5	650		0
3	10	4H S 5	650		0
10	3	4H S 5	650		0
4	8	4H S 5	650		0
8	4	4H S 5	650		0
7	9	4H S 5	650		0
9	7	4H S 5	650		0

Board (32) Av: NS=+50

N-S	E-W	Contract	N-S	E-W	IMP
1	5	1NT N 3	150		3
5	1	2S S-1	50		-3
2	6	2H E 2	110		-4
6	2	1NT N 2	120		2
3	10	3H E-1	100		2
10	3	2S S-1	50		-3
4	8	1NT N 2	120		2
8	4	3C S 3	110		2
7	9	3H E 3	140		-5
9	7	1NT N 2	120		2

Board (33) Av: NS=-30

N-S	E-W	Contract	N-S	E-W	IMP
1	5	3H W 3	140		-3
5	1	3H W 4	170		-4
2	6	4H W-2	100		4
6	2	4H W-2	100		4
3	10	2S S-1	50		-1
10	3	3H W 4	170		-4
4	8	3H W-1	50		2
8	4	3H W 3	140		-3
7	9	3H W-1	50		2
9	7	3H W-1	50		2

34 ♠AQ8 ♠10973
♥J853 ♥K
♦A54 ♦KQ109
♣AQ4 ♣K1065

♠K4 ♠10973
♥Q1072 ♥K
♦J863 ♦KQ109
♣J93 ♣K1065

♠J652
♥A964
♦72
♣872

35 ♠J754 ♠K862
♥K6 ♥A95
♦Q9743 ♦KJ
♣Q3 ♣K1085

♠AQ10 ♠K862
♥QJ87 ♥A95
♦A1052 ♦KJ
♣76 ♣K1085

♠93
♥10432
♦86
♣AJ942

36 ♠KJ73 ♠AQ92
♥Q42 ♥K7
♦J1053 ♦KQ8
♣75 ♣10843

♠85 ♠AQ92
♥J109865 ♥K7
♦942 ♦KQ8
♣Q9 ♣10843

♠1064
♥A3
♦A76
♣AKJ62

Board (34) Av: NS=-10

N-S	E-W	Contract	N-S	E-W	IMP
1	5	1NT N 2	120		4
5	1	2D E 3	110		-3
2	6	2NT N-1	100		-3
6	2	2D E-1	50		2
3	10	1NT N-1	100		-3
10	3	1NT N-1	100		-3
4	8	1NT N 1	90		3
8	4	1NT N 1	90		3
7	9	1NT N 1	90		3
9	7	2H N-1	100		-3

Board (35) Av: NS=-630

N-S	E-W	Contract	N-S	E-W	IMP
1	5	3NT W 4	630		0
5	1	3NT W 4	630		0
2	6	3NT W 5	660		-1
6	2	3NT E 4	630		0
3	10	3NT W 4	630		0
10	3	3NT W 3	600		1
4	8	3NT W 5	660		-1
8	4	3NT W 3	600		1
7	9	3NT W 3	600		1
9	7	3NT W 4	630		0

Board (36) Av: NS=-10

N-S	E-W	Contract	N-S	E-W	IMP
1	5	2H W 2	110		-3
5	1	1NT S-1	100		-3
2	6	1NT S 1	90		3
6	2	1NT S 1	90		3
3	10	1NT S 1	90		3
10	3	2H W-1	100		3
4	8	3D S-2	200		-5
8	4	2H W 2	110		-3
7	9	1NT S-1	100		-3
9	7	1NT S 1	90		3

兵庫県知事杯 OPEN TEAMS Session 5 Flight A 2008年10月13日(月)

1

♠KQ3
♥A107
♦J108
♣KQ72

♠AJ872
♥K965
♦732
♣9

♠104
♥Q32
♦Q94
♣AJ843

♠965
♥J84
♦AK65
♣1065

2

♠AKQ865
♥1082
♦4
♣KJ10

♠104
♥AJ4
♦KQ9875
♣72

♠J9732
♥765
♦J102
♣A4

♠KQ93
♥AK63
♦Q98653

3

♠AJ1075
♥K
♦AQ8
♣QJ86

♠K942
♥Q5
♦10954
♣A72

♠Q8
♥A10763
♦J72
♣K43

♠63
♥J9842
♦K63
♣1095

4

♠42
♥QJ9
♦J984
♣KJ75

♠AKQJ109
♥876
♦AK52
♣

♠75
♥AK4
♦Q7
♣Q109843

♠863
♥10532
♦1063
♣A62

5

♠Q9762
♥8
♦Q109
♣J1095

♠A54
♥K53
♦K8542
♣A3

♠KJ8
♥QJ94
♦A
♣K8762

♠103
♥A10762
♦J763
♣Q4

Board (1) Av: NS=+120

N-S	E-W	Contract	N-S	E-W	IMP
1	4	2NT N 4	180		2
4	1	2NT N 2	120		0
2	3	2H W-1	50		-2
3	2	2H E-1	50		-2
5	8	1NT S 2	120		0
8	5	2NT N 3	150		1
6	9	1NT N 3	150		1
9	6	3NT N-1	50		-5
7	10	2NT N 3	150		1
10	7	2NT N 3	150		1

Board (2) Av: NS=+50

N-S	E-W	Contract	N-S	E-W	IMP
1	4	4S N-3	300		-8
4	1	5Dx W-2	300		6
2	3	5C S 5	600		11
3	2	4S N-1	100		-4
5	8	4S N-1	100		-4
8	5	2S N 3	140		3
6	9	3NT S-3	300		-8
9	6	4S N-3	300		-8
7	10	2S N 3	140		3
10	7	3NT S 4	630		11

Board (3) Av: NS=+100

N-S	E-W	Contract	N-S	E-W	IMP
1	4	1S N 1	80		-1
4	1	1S N 2	110		0
2	3	1S N 2	110		0
3	2	1S N 1	80		-1
5	8	2S S 2	110		0
8	5	1S N 2	110		0
6	9	1S N 2	110		0
9	6	3D N-3	150		-6
7	10	2H E-3	800		12
10	7	1S N 1	80		-1

Board (4) Av: NS=-670

N-S	E-W	Contract	N-S	E-W	IMP
1	4	6S E 6	1430		-13
4	1	4S W 6	680		0
2	3	4S W 6	680		0
3	2	5S E 5	650		1
5	8	4S W 6	680		0
8	5	3NT E 5	660		0
6	9	3NT E 5	660		0
9	6	3NT E 5	660		0
7	10	4S W 6	680		0
10	7	4S W 6	680		0

Board (5) Av: NS=-410

N-S	E-W	Contract	N-S	E-W	IMP
1	4	3NT E 3	400		0
4	1	3NT E 3	400		0
2	3	3NT E 3	400		0
3	2	3NT E 3	400		0
5	8	3NT W 4	430		-1
8	5	3NT E 3	400		0
6	9	3NT W 3	400		0
9	6	3NT W 4	430		-1
7	10	3NT W-1	50		10
10	7	3NT E 4	430		-1

6

♠K102
♥KQ93
♦J5
♣A876

♠J
♥A54
♦AKQ862
♣KQ9

♠A98754
♥J1062
♦4
♣J2

♠Q63
♥87
♦10973
♣10543

7

♠QJ5
♥109832
♦AK
♣A95

♠A1087
♥KQ6
♦97
♣J862

♠63
♥AJ5
♦1052
♣KQ1043

♠K942
♥74
♦QJ8643
♣7

8

♠AQ107
♥AJ9743
♦4
♣Q9

♠53
♥86
♦AJ53
♣K8752

♠KJ6
♥KQ102
♦82
♣AJ64

♠9842
♥5
♦KQ10976
♣103

9

♠32
♥QJ87432
♦Q
♣A64

♠J109654
♥A10
♦A85
♣J5

♠AQ87
♥65
♦J107
♣K872

♠K
♥K9
♦K96432
♣Q1093

10

♠K864
♥AK986
♦A8
♣KQ

♠Q2
♥Q4
♦J765
♣109432

♠A73
♥732
♦Q1032
♣A86

♠J1095
♥J105
♦K94
♣J75

Board (6) Av: NS=-470

N-S	E-W	Contract	N-S	E-W	IMP
1	4	3NT W 5	660		-5
4	1	3NT W 3	600		-4
2	3	3NT W 5	660		-5
3	2	3NT W 3	600		-4
5	8	3NT W-1	100		11
8	5	3NT W 4	630		-4
6	9	3NT W 3	600		-4
9	6	3D W 4	130		8
7	10	3NT W 3	600		-4
10	7	4S E-2	200		12

Board (7) Av: NS=+10

N-S	E-W	Contract	N-S	E-W	IMP
1	4	2H N-1	100		-3
4	1	1NT N-2	200		-5
2	3	2D S 4	130		3
3	2	2S S-1	100		-3
5	8	3D S 4	130		3
8	5	2S S 2	110		3
6	9	2H N 3	140		4
9	6	2NT W 2	120		-4
7	10	3C E 3	110		-3
10	7	2H N 2	110		3

Board (8) Av: NS=-90

N-S	E-W	Contract	N-S	E-W	IMP
1	4	2H N-2	100		0
4	1	2S S 2	110		5
2	3	2H N-1	50		1
3	2	3D S-2	100		0
5	8	2H N-2	100		0
8	5	3S S-3	150		-2
6	9	3S S-2	100		0
9	6	2NT W 5	210		-3
7	10	3S S-1	50		1
10	7	4S S-2	100		0

Board (9) Av: NS=-260

N-S	E-W	Contract	N-S	E-W	IMP
1	4	4S W 4	620		-8
4	1	5Hx N-2	300		-1
2	3	3NT S-3	150		3
3	2	4S W 4	620		-8
5	8	4Sx W-1	200		10
8	5	4H N-1	50		5
6	9	4H N-1	50		5
9	6	4H N-2	100		4
7	10	4S W 4	620		-8
10	7	3S W 4	170		3

Board (10) Av: NS=+640

N-S	E-W	Contract	N-S	E-W	IMP
1	4	4H N 4	620		-1
4	1	4H N 4	620		-1
2	3	4H N 5	650		0
3	2	4H N 4	620		-1
5	8	4S S 5	650		0
8	5	4H N 5	650		0
6	9	4H S 5	650		0
9	6	4H N 5	650		0
7	10	4H N 4	620		-1
10	7	4H N 5	650		0

兵庫県知事杯 OPEN TEAMS Session 5 Flight A 2008年10月13日(月)

11

♠A
♥9743
♦K52
♣AKQ54

♠J5432
♥J85
♦J76
♣J10

N
W E
S

♠10976
♥Q62
♦Q104
♣983

♠KQ8
♥AK10
♦A983
♣762

Board (11) Av: NS=+960

N-S	E-W	Contract	N-S	E-W	IMP
1	4	6NT S	6	990	1
4	1	6C N	7	940	-1
2	3	6C N	7	940	-1
3	2	6NT S	6	990	1
5	8	4NT N	6	490	-10
8	5	6C N	6	920	-1
6	9	6C N	7	940	-1
9	6	6NT S	6	990	1
7	10	6NT S	6	990	1
10	7	6NT S	7	1020	2

12

♠A10842
♥Q4
♦A9852
♣4

♠J3
♥K5
♦QJ1074
♣6532

N
W E
S

♠KQ6
♥8732
♦K
♣AQJ108

♠975
♥AJ1096
♦63
♣K97

Board (12) Av: NS=-70

N-S	E-W	Contract	N-S	E-W	IMP
1	4	3C E	3	110	-1
4	1	3NT E	-3	150	6
2	3	3S N	-2	200	-4
3	2	3NT E	-2	100	5
5	8	3NTx E	-3	500	11
8	5	3S N	-2	200	-4
6	9	4S N	-2	200	-4
9	6	4S N	-1	100	-1
7	10	3S N	-1	100	-1
10	7	4S N	-1	100	-1

13

♠8
♥QJ864
♦K
♣KQJ1073

♠AQ1053
♥92
♦942
♣A84

N
W E
S

♠J974
♥A10753
♦103
♣65

♠K62
♥K
♦AQJ8765
♣92

Board (13) Av: NS=-190

N-S	E-W	Contract	N-S	E-W	IMP
1	4	4H N	-2	200	0
4	1	5C N	-1	100	3
2	3	3NT S	-2	200	0
3	2	4H N	-3	300	-3
5	8	5C S	-1	100	3
8	5	5D S	-3	300	-3
6	9	6H N	-3	300	-3
9	6	3NT S	-1	100	3
7	10	3NT S	-2	200	0
10	7	5D S	5	600	13

14

♠5
♥K97532
♦KJ3
♣1094

♠A109
♥AQJ1086
♦54
♣A3

N
W E
S

♠KJ764
♥
♦AQ97
♣KQ87

♠Q832
♥4
♦10862
♣J652

Board (14) Av: NS=-520

N-S	E-W	Contract	N-S	E-W	IMP
1	4	6S E	-1	50	11
4	1	4S E	5	450	2
2	3	4S E	6	480	1
3	2	6S E	6	980	-10
5	8	4S E	4	420	3
8	5	6S E	6	980	-10
6	9	4S E	5	450	2
9	6	4H W	4	420	3
7	10	6S E	-2	100	12
10	7	6S E	6	980	-10

15

♠AK73
♥A
♦KQ92
♣AK95

♠J982
♥J10
♦A106
♣Q1074

N
W E
S

♠Q65
♥87652
♦43
♣J62

♠104
♥KQ943
♦J875
♣83

Board (15) Av: NS=+670

N-S	E-W	Contract	N-S	E-W	IMP
1	4	3NT N	5	660	0
4	1	3NT N	5	660	0
2	3	3NT N	6	690	1
3	2	3NT N	5	660	0
5	8	Cancel			
8	5	Cancel			
6	9	6D S	6	1370	12
9	6	3NT N	5	660	0
7	10	3NT N	6	690	1
10	7	3NT S	5	660	0

16

♠J52
♥10965
♦KJ83
♣AQ

♠K3
♥Q7432
♦A10975
♣4

N
W E
S

♠Q9874
♥AJ8
♦64
♣1072

♠A106
♥K
♦Q2
♣KJ98653

Board (16) Av: NS=+130

N-S	E-W	Contract	N-S	E-W	IMP
1	4	3NT N	5	460	8
4	1	5C S	-2	100	-6
2	3	3NT N	-1	50	-5
3	2	3C S	4	130	0
5	8	3NT N	3	400	7
8	5	3C S	3	110	-1
6	9	5C S	-2	100	-6
9	6	2C S	5	150	1
7	10	Passout			-4
10	7	3NT N	3	400	7

17

♠A106
♥8632
♦9
♣AKQJ9

♠QJ8
♥KQJ9
♦A108
♣764

N
W E
S

♠K9743
♥74
♦Q43
♣1052

♠52
♥A105
♦KJ7652
♣83

Board (17) Av: NS=+110

N-S	E-W	Contract	N-S	E-W	IMP
1	4	2S E	-3	150	1
4	1	2C N	2	90	-1
2	3	2S E	-2	100	0
3	2	2S E	-2	100	0
5	8	3S E	-2	100	0
8	5	3D S	3	110	0
6	9	2H N	2	110	0
9	6	3C N	-2	100	-5
7	10	3S E	-3	150	1
10	7	2D S	2	90	-1

18

♠J973
♥87
♦3
♣KQ8764

♠K10
♥AK10943
♦1087
♣A2

N
W E
S

♠AQ865
♥65
♦954
♣J109

♠42
♥QJ2
♦AKQJ62
♣53

Board (18) Av: NS=-150

N-S	E-W	Contract	N-S	E-W	IMP
1	4	2H E	3	140	0
4	1	2H W	3	140	0
2	3	3D S	-2	200	-2
3	2	3D S	-2	200	-2
5	8	2H W	2	110	1
8	5	2H W	3	140	0
6	9	1NT S	1	90	6
9	6	3H W	3	140	0
7	10	3D S	-2	200	-2
10	7	2H W	3	140	0

兵庫県知事杯 OPEN TEAMS Session 6 Flight A 2008年10月13日(月)

1

♠AQ86432
♥K
♦6
♣8753

♠KJ
♥Q10752
♦7
♣KJ642

♠105
♥9864
♦A10853
♣AQ

♠97
♥AJ3
♦KQJ942
♣109

2

♠J832
♥1094
♦J9542
♣A

♠Q105
♥Q8
♦Q873
♣7542

♠AK
♥7532
♦AK10
♣9863

♠9764
♥AKJ6
♦6
♣KQJ10

3

♠Q8
♥AJ862
♦K74
♣1096

♠AK9642
♥53
♦962
♣K5

♠J1075
♥K9
♦A105
♣A432

♠3
♥Q1074
♦QJ83
♣QJ87

4

♠K63
♥8
♦AK10874
♣AJ4

♠AJ9
♥10942
♦2
♣Q10852

♠Q87
♥AKQ63
♦6
♣K963

♠10542
♥J75
♦QJ953
♣7

5

♠103
♥7
♦K1095
♣AKJ1097

♠K95
♥J103
♦QJ8743
♣8

♠QJ74
♥A9852
♦A
♣Q64

♠A862
♥KQ64
♦62
♣532

Board (1) Av: NS=0			Board (2) Av: NS=+120			Board (3) Av: NS=-630			Board (4) Av: NS=-40			Board (5) Av: NS=-50																	
N-S	E-W	Contract	N-S	E-W	IMP	N-S	E-W	IMP	N-S	E-W	IMP	N-S	E-W	IMP	N-S	E-W	IMP												
1	3	3S	N-1	50	-2	1	3	2H	N-1	100	-6	1	3	4S	W 4	620	0	1	3	5H	E-2	200	6	1	3	3NT	N-2	200	-4
3	1	4S	N-1	50	-2	3	1	3H	S 3	140	1	3	1	4S	W 4	620	0	3	1	5D	N-1	100	-2	3	1	3C	N 3	110	4
2	4	4S	N 4	420	9	2	4	2S	N 3	140	1	2	4	4S	W 4	620	0	2	4	5D	N-1	100	-2	2	4	2D	W-1	50	3
4	2	3S	N-1	50	-2	4	2	1NT	W-1	50	-2	4	2	5Hx	N-4	800	-5	4	2	5Dx	N-1	200	-4	4	2	3C	N 3	110	4
5	10	4S	N-1	50	-2	5	10	2S	N 3	140	1	5	10	4S	W 5	650	-1	5	10	5D	N-1	100	-2	5	10	3NT	S-1	100	-2
10	5	4H	E-1	50	2	10	5	2C	E-2	100	-1	10	5	4S	W 4	620	0	10	5	5Dx	N-1	200	-4	10	5	3NT	S-3	300	-6
6	7	3D	S-1	50	-2	6	7	3H	S 3	140	1	6	7	4S	E 4	620	0	6	7	5H	E-3	300	8	6	7	3NT	S-1	100	-2
7	6	4H	W-1	50	2	7	6	3C	E-3	150	1	7	6	4S	W 4	620	0	7	6	4H	E-2	200	6	7	6	3D	W-2	100	4
8	9	5H	N-1	50	-2	8	9	2S	N 3	140	1	8	9	4S	W 4	620	0	8	9	3H	E 3	140	-3	8	9	3NT	S-4	400	-8
9	8	3S	N 3	140	4	9	8	2C	E-2	100	-1	9	8	4S	W 5	650	-1	9	8	5D	N-1	100	-2	9	8	2D	W-1	50	3

6

♠A1093
♥J94
♦A108
♣Q105

♠72
♥Q1065
♦J9765
♣96

♠J85
♥873
♦Q43
♣A743

♠KQ64
♥AK2
♦K2
♣KJ82

7

♠Q9752
♥106
♦Q108632
♣

♠6
♥AQ82
♦A754
♣10875

♠AJ10843
♥
♦KJ9
♣J962

♠K
♥KJ97543
♦
♣AKQ43

8

♠62
♥KJ1054
♦A1042
♣93

♠A8
♥AQ987
♦KQ
♣K874

♠107543
♥
♦8653
♣AQJ6

♠KQJ9
♥632
♦J97
♣1052

9

♠10652
♥J8
♦QJ9
♣J972

♠4
♥AQ1072
♦1062
♣AK83

♠KJ3
♥K3
♦AK854
♣654

♠AQ987
♥9654
♦73
♣Q10

10

♠KQ5
♥A84
♦Q95
♣K1062

♠J9843
♥Q32
♦7
♣J953

♠76
♥J75
♦K8643
♣AQ7

♠A102
♥AK1096
♦AJ102
♣84

Board (6) Av: NS=+480			Board (7) Av: NS=-190			Board (8) Av: NS=+40			Board (9) Av: NS=-740			Board (10) Av: NS=+640																	
N-S	E-W	Contract	N-S	E-W	IMP	N-S	E-W	IMP	N-S	E-W	IMP	N-S	E-W	IMP	N-S	E-W	IMP												
1	3	4S	N 6	480	0	1	3	5Hx	S-2	500	-7	1	3	3NT	W-1	50	0	1	3	3NT	E 4	630	3	1	3	3NT	N 4	630	0
3	1	3NT	S 6	490	0	3	1	4H	S-2	200	0	3	1	3NT	W-1	50	0	3	1	4H	W 5	650	3	3	1	3NT	N 4	630	0
2	4	4S	N 6	480	0	2	4	4H	S-1	100	3	2	4	5C	W-2	100	2	2	4	3NT	E 4	630	3	2	4	3NT	S 4	630	0
4	2	4S	N 6	480	0	4	2	5Hx	S-2	500	-7	4	2	2C	W 4	130	-5	4	2	4Sx	N-5	1100	-8	4	2	3NT	N 5	660	1
5	10	4S	N 6	480	0	5	10	5Hx	S-1	200	0	5	10	3NT	W-1	50	0	5	10	4Sx	S-5	1100	-8	5	10	3NT	N 4	630	0
10	5	4S	N 6	480	0	10	5	4H	S-1	100	3	10	5	2C	W 2	90	-4	10	5	3NT	E 4	630	3	10	5	3NT	N 5	660	1
6	7	6S	S 6	980	11	6	7	4H	S-1	100	3	6	7	3NTxW-2	300	90	6	6	7	4Sx	S-4	800	-2	6	7	3NT	N 4	630	0
7	6	4S	N 6	480	0	7	6	4H	S-1	100	3	7	6	6C	E-3	150	3	7	6	4H	W 5	650	3	7	6	3NT	N 5	660	1
8	9	4S	N 6	480	0	8	9	3S	E-2	200	9	8	9	4S	E-2	100	2	8	9	3NT	E 4	630	3	8	9	3NT	N 4	630	0
9	8	4S	S 6	480	0	9	8	5H	S-2	200	0	9	8	2C	W 3	110	-4	9	8	3Sx	S-4	800	-2	9	8	3NT	N 4	630	0

兵庫県知事杯 OPEN TEAMS Session 6 Flight A 2008年10月13日(月)

11

♠105432
♥9874
♦K62
♣5

♠K8 ♠QJ
♥J632 ♥AK10
♦1043 ♦J985
♣K1073 ♣AJ98

W N E S

♠A976
♥Q5
♦AQ7
♣Q642

Board (11) Av: NS=+10

N-S	E-W	Contract	N-S	E-W	IMP
1	3	3H W 3		140	-4
3	1	1NT E 3		150	-4
2	4	2S N 2	110		3
4	2	3S N 3	140		4
5	10	3C E-1	50		1
10	5	2S N 2	110		3
6	7	3H W 3	140		-4
7	6	3H W-2	100		3
8	9	3H W-1	50		1
9	8	3S N-1	50		-2

12

♠J943
♥1073
♦AQ7
♣KJ2

♠AQ6 ♠10852
♥5 ♥KQ6
♦K86543 ♦J10
♣1053 ♣Q986

W N E S

♠K7
♥AJ9842
♦92
♣A74

Board (12) Av: NS=+190

N-S	E-W	Contract	N-S	E-W	IMP
1	3	3NT N 4	630		10
3	1	4H S-1		100	-7
2	4	4H S 4	620		10
4	2	4H S-2		200	-9
5	10	4H S 4	620		10
10	5	4H S 4	620		10
6	7	4H N-1		100	-7
7	6	3H S-1		100	-7
8	9	3H S 3	140		-2
9	8	4H S-2		200	-9

13

♠Q10
♥J5
♦QJ105
♣QJ982

♠742 ♠AKJ53
♥A10732 ♥9
♦K876 ♦A32
♣A ♣K1064

W N E S

♠986
♥KQ864
♦94
♣753

Board (13) Av: NS=-660

N-S	E-W	Contract	N-S	E-W	IMP
1	3	4S E 5		650	0
3	1	4S E 5		650	0
2	4	4S E 5		650	0
4	2	4S E 5		650	0
5	10	4S E 4		620	1
10	5	4S E 6		680	-1
6	7	4S E 5		650	0
7	6	4S E 6		680	-1
8	9	4S E 5		650	0
9	8	4S E 6		680	-1

14

♠1042
♥1064
♦K76
♣KQ65

♠865 ♠AJ73
♥KQ2 ♥AJ8
♦J1094 ♦AQ53
♣J109 ♣84

W N E S

♠KQ9
♥9753
♦82
♣A732

Board (14) Av: NS=-120

N-S	E-W	Contract	N-S	E-W	IMP
1	3	1NT E 2		120	0
3	1	1NT E 2		120	0
2	4	1NT E 2		120	0
4	2	1NT E 2		120	0
5	10	1NT E 2		120	0
10	5	1NT E 2		120	0
6	7	1NT E 2		120	0
7	6	1NT E 2		120	0
8	9	1NT E 1		90	1
9	8	1NT E 2		120	0

15

♠Q10
♥AK74
♦109
♣A9872

♠97 ♠K8532
♥Q952 ♥108
♦864 ♦KJ53
♣J1054 ♣KQ

W N E S

♠AJ64
♥J63
♦AQ72
♣63

Board (15) Av: NS=+350

N-S	E-W	Contract	N-S	E-W	IMP
1	3	3NT N 4	630		7
3	1	3NT N-1		100	-10
2	4	3NT S 3	600		6
4	2	3NT S-1		100	-10
5	10	3NT N 3	600		6
10	5	3NT S-3		300	-12
6	7	3NT S-1		100	-10
7	6	3NT N 3	600		6
8	9	3NT S 4	630		7
9	8	3NT S 4	630		7

16

♠87652
♥K9
♦AQ7
♣A93

♠Q103 ♠AK
♥Q1054 ♥AJ87
♦652 ♦KJ983
♣K52 ♣74

W N E S

♠J94
♥632
♦104
♣QJ1086

Board (16) Av: NS=-50

N-S	E-W	Contract	N-S	E-W	IMP
1	3	2S N 2	110		4
3	1	4H W 4		620	-11
2	4	4H W-2	200		6
4	2	2S N-1		50	0
5	10	3H W 3	140		-3
10	5	4H W 4	620		-11
6	7	3C W-3	300		8
7	6	4H W-1	100		4
8	9	3D E-1	100		4
9	8	3D E 3		110	-2

17

♠108752
♥AQ7
♦J7
♣A92

♠KQJ3 ♠AK
♥K1086 ♥94
♦103 ♦AQ985
♣KQ6 ♣1087543

W N E S

♠A964
♥J532
♦K642
♣J

Board (17) Av: NS=+40

N-S	E-W	Contract	N-S	E-W	IMP
1	3	3C W 3		110	-4
3	1	3S N-1		50	-3
2	4	5C W-1		50	0
4	2	3S N-2		100	-4
5	10	3S N 3	140		3
10	5	5C W-3	150		3
6	7	5C E-2	100		2
7	6	4Sx N-2		300	-8
8	9	5Cx W-2	300		6
9	8	5C W-2	100		2

18

♠A10
♥Q986
♦KQ975
♣32

♠QJ9873 ♠K65
♥A43 ♥KJ7
♦83 ♦J62
♣74 ♣AKQ10

W N E S

♠42
♥1052
♦A104
♣J9865

Board (18) Av: NS=-390

N-S	E-W	Contract	N-S	E-W	IMP
1	3	4S E 4		420	-1
3	1	4S E 4		420	-1
2	4	4S E 6		480	-3
4	2	4S E 4		420	-1
5	10	2S E 4		170	6
10	5	4S E 4		420	-1
6	7	4S E 5		450	-2
7	6	4S E 4		420	-1
8	9	2S E 4		170	6
9	8	4S E 4		420	-1

兵庫県知事杯 OPEN TEAMS Session 6 Flight A 2008年10月13日(月)

19

♠K10
♥QJ4
♦Q109842
♣A6

♠54
♥1082
♦KJ765
♣K54

N
W—E
S

♠93
♥AK965
♦A3
♣J1072

♠AQJ8762
♥73
♦
♣Q983

Board (19) Av: NS=+370

N-S	E-W	Contract	N-S	E-W	IMP
1	2 4S	S 4	420		2
2	1 4S	S 4	420		2
3	4 4S	S 4	420		2
4	3 3S	S 4	170		-5
5	6 4S	S 4	420		2
6	5 4S	S 4	420		2
7	8 2S	S 4	170		-5
8	7 4S	S 4	420		2
9	10 4S	S 4	420		2
10	9 4H	E-3	300		-2

20

♠J976
♥AQ9
♦109
♣QJ52

♠AQ5
♥10864
♦J72
♣A76

N
W—E
S

♠1042
♥K73
♦K63
♣K1083

♠K83
♥J52
♦AQ854
♣94

Board (20) Av: NS=0

N-S	E-W	Contract	N-S	E-W	IMP
1	2	Passout			0
2	1	Passout			0
3	4	Passout			0
4	3	Passout			0
5	6	Passout			0
6	5 1S	N 1	80		2
7	8	Passout			0
8	7	Passout			0
9	10	Passout			0
10	9	Passout			0

21

♠1065
♥QJ5
♦84
♣K9742

♠AK82
♥876
♦932
♣AJ8

N
W—E
S

♠QJ4
♥A109432
♦Q
♣1065

♠973
♥K
♦AKJ10765
♣Q3

Board (21) Av: NS=-90

N-S	E-W	Contract	N-S	E-W	IMP
1	2 3H	E 3	140		-2
2	1 3H	E 3	140		-2
3	4 3H	E 3	140		-2
4	3 3H	W 3	140		-2
5	6 4H	E-1	50		4
6	5 3D	S-1	100		0
7	8 4H	E-1	50		4
8	7 3S	W-2	100		5
9	10 3H	E 3	140		-2
10	9 3H	E 3	140		-2

22

♠743
♥J963
♦J862
♣102

♠KQ1085
♥K102
♦74
♣AK6

N
W—E
S

♠962
♥AQ8
♦9
♣QJ9754

♠AJ
♥754
♦AKQ1053
♣83

Board (22) Av: NS=-490

N-S	E-W	Contract	N-S	E-W	IMP
1	2 4S	W 5	650		-4
2	1 3NT	S-2	100		9
3	4 1NT	S 1	90		11
4	3 5Dx	S-4	800		-7
5	6 5Dx	S-4	800		-7
6	5 4S	W 5	650		-4
7	8 5Dx	S-4	800		-7
8	7 5Dx	S-3	500		0
9	10 3S	W 5	200		7
10	9 3S	W 5	200		7

23

♠82
♥J982
♦K10652
♣A4

♠K1043
♥K106543
♦7
♣J2

N
W—E
S

♠AQJ65
♥93
♦KQ10987

♠97
♥AQ7
♦AQJ84
♣653

Board (23) Av: NS=-690

N-S	E-W	Contract	N-S	E-W	IMP
1	2 4S	W 5	650		1
2	1 4S	W 5	650		1
3	4 4S	E 5	650		1
4	3 4Sx	E 5	990		-7
5	6 4Sx	E 5	990		-7
6	5 4S	W 5	650		1
7	8 4S	E 5	650		1
8	7 4S	E 5	650		1
9	10 4S	W 5	650		1
10	9 4S	E 5	650		1

24

♠Q432
♥J85
♦Q
♣AKQJ9

♠A87
♥K964
♦952
♣832

N
W—E
S

♠K9
♥Q103
♦AJ1076
♣654

♠J1065
♥A72
♦K843
♣107

Board (24) Av: NS=+50

N-S	E-W	Contract	N-S	E-W	IMP
1	2 4S	N-1	50		-3
2	1 4S	S-1	50		-3
3	4 2S	S 4	170		3
4	3 4S	S-1	50		-3
5	6 3S	S 3	140		3
6	5 4S	N 4	420		3
7	8 3S	N 3	140		9
8	7 3S	S 3	140		3
9	10 3NT	S-1	50		-3
10	9 4S	S-1	50		-3

25

♠Q76
♥KQJ74
♦K
♣A963

♠82
♥10
♦A973
♣KQ10842

N
W—E
S

♠AKJ43
♥9832
♦105
♣75

♠1095
♥A65
♦QJ8642
♣J

Board (25) Av: NS=-60

N-S	E-W	Contract	N-S	E-W	IMP
1	2 4H	N-2	100		-1
2	1 3H	N-1	50		0
3	4 4H	N-1	50		0
4	3 3H	N-2	100		-1
5	6 4H	N-2	100		-1
6	5 4H	N-2	100		-1
7	8 3H	N-1	50		0
8	7 2H	N 2	110		5
9	10 4H	N-2	100		-1
10	9 2H	N 2	110		5

26

♠94
♥KJ9763
♦5
♣QJ98

♠Q85
♥A1052
♦10763
♣76

N
W—E
S

♠J107
♥Q84
♦KQ98
♣K105

♠AK632
♥
♦AJ42
♣A432

Board (26) Av: NS=+210

N-S	E-W	Contract	N-S	E-W	IMP
1	2 4S	S-1	100		-7
2	1 2Hx	E-4	1100		13
3	4 4S	S 4	620		9
4	3 3NT	N-1	100		-7
5	6 3S	S 3	140		-2
6	5 2H	N 4	170		-1
7	8 2H	N 3	140		-2
8	7 2S	S 4	170		-1
9	10 3NT	N 4	630		9
10	9 3NT	N-1	100		-7

27

♠K
♥843
♦8753
♣A10964

♠J532
♥AQJ1075
♦AK4
♣

N
W—E
S

♠109
♥K92
♦962
♣K8732

♠AQ8764
♥6
♦QJ10
♣QJ5

Board (27) Av: NS=-330

N-S	E-W	Contract	N-S	E-W	IMP
1	2 4H	W 4	420		-3
2	1 4H	W 5	450		-3
3	4 4H	W 4	420		-3
4	3 5Hxx	W-1	200		11
5	6 4H	W 4	420		-3
6	5 5H	W 5	450		-3
7	8 4H	W 4	420		-3
8	7 4H	W-1	50		9
9	10 3H	W 4	170		4
10	9 4H	W 4	420		-3

28

♠KJ1043
♥9864
♦
♣KQ104

♠62
♥A5
♦AKJ762
♣A32

N
W—E
S

♠9875
♥KQ73
♦10843
♣J

♠AQ
♥J102
♦Q95
♣98765

Board (28) Av: NS=-310

N-S	E-W	Contract	N-S	E-W	IMP
1	2 5D	W 6	420		-3
2	1 3NT	W 4	430		-3
3	4 3D	W 7	190		3
4	3 3D	W 6	170		4
5	6 5Dx	W 6	650		-8
6	5 5Dx	W 5	550		-6
7	8 5D	W 6	420		-3
8	7 3D	W 5	150		4
9	10 3D	W 6	170		4
10	9 2D	W 5	150		4

兵庫県知事杯 OPEN TEAMS Session 6 Flight A 2008年10月13日(月)

29

♠J652
♥K6
♦A62
♣K1097

♠Q73 ♠A4
♥AJ98 ♥Q32
♦104 ♦QJ73
♣A854 ♣Q632

♠K1098
♥10754
♦K985
♣J

30

♠Q64
♥AK1062
♦KQ2
♣J10

♠K873 ♠A102
♥854 ♥3
♦A75 ♦J8643
♣KQ9 ♣A432

♠J95
♥QJ97
♦109
♣8765

31

♠J75
♥A
♦A97654
♣A93

♠AQ1082 ♠643
♥QJ ♥1074
♦J103 ♦KQ2
♣K42 ♣J1065

♠K9
♥K986532
♦8
♣Q87

32

♠62
♥AK10732
♦K73
♣98

♠Q853 ♠AJ1074
♥Q94 ♥5
♦J1096 ♦5
♣73 ♣KQJ642

♠K9
♥J86
♦AQ842
♣A105

33

♠AK76
♥853
♦QJ86
♣J10

♠8 ♠J10932
♥KJ974 ♥Q10
♦A932 ♦54
♣KQ6 ♣A984

♠Q54
♥A62
♦K107
♣7532

Board (29) Av: NS=+80

N-S	E-W	Contract	N-S	E-W	IMP
1	2	Passout			-2
2	1	2S N 2	110		1
3	4	Passout			-2
4	3	2S N 2	110		1
5	6	2S N 2	110		1
6	5	Passout			-2
7	8	2S N 2	110		1
8	7	2NT W-2	200		3
9	10	2NT E-2	200		3
10	9	Passout			-2

Board (30) Av: NS=-40

N-S	E-W	Contract	N-S	E-W	IMP
1	2	3H N-1	50		0
2	1	3H N-1	50		0
3	4	3H N-1	50		0
4	3	3H N-1	50		0
5	6	4S W-1	50		3
6	5	3H N-1	50		0
7	8	3H N-1	50		0
8	7	4C W-2	100		4
9	10	3D E 3	110		-2
10	9	3H N-1	50		0

Board (31) Av: NS=+70

N-S	E-W	Contract	N-S	E-W	IMP
1	2	2S W-2	100		1
2	1	3H S 3	140		2
3	4	3S W 3	140		-5
4	3	2S W-3	150		2
5	6	2S W-2	100		1
6	5	3S W-4	200		4
7	8	4D N-2	200		-7
8	7	3S S 5	200		4
9	10	3H W 3	140		-5
10	9	3H S 4	170		3

Board (32) Av: NS=+260

N-S	E-W	Contract	N-S	E-W	IMP
1	2	4H N 4	420		4
2	1	4Sx W-1	200		-2
3	4	4Sx E-1	200		-2
4	3	5Dx S-3	500		-13
5	6	4Sx W-1	200		-2
6	5	4H N 5	450		5
7	8	4H N 5	450		5
8	7	4Sx E-1	200		-2
9	10	5H N-1	50		-7
10	9	5Sx E-2	500		6

Board (33) Av: NS=-130

N-S	E-W	Contract	N-S	E-W	IMP
1	2	2H W 3	140		0
2	1	2H W 2	110		1
3	4	2H W 4	170		-1
4	3	2H E 3	140		0
5	6	2H E 3	140		0
6	5	2H W 3	140		0
7	8	2H W 2	110		1
8	7	2H W 3	140		0
9	10	2H W 2	110		1
10	9	1NT W-1	50		5

34

♠K5
♥962
♦AK975
♣Q82

♠109874 ♠A63
♥K105 ♥8
♦J ♦Q1086432
♣A963 ♣105

♠QJ2
♥AQJ743
♦
♣KJ74

35

♠A963
♥K10843
♦QJ
♣A10

♠1085 ♠KQ42
♥AJ72 ♥9
♦K8642 ♦A95
♣4 ♣K8753

♠J7
♥Q65
♦1073
♣QJ962

36

♠Q42
♥Q653
♦63
♣AQ32

♠K107 ♠J86
♥92 ♥KJ8
♦AQ10872 ♦K954
♣J6 ♣1054

♠A953
♥A1074
♦J
♣K987

Board (34) Av: NS=+350

N-S	E-W	Contract	N-S	E-W	IMP
1	2	4H S 4	620		7
2	1	4H S-1	100		-10
3	4	4H S-1	100		-10
4	3	4H S-1	100		-10
5	6	3NT N 4	630		7
6	5	4H S 4	620		7
7	8	4H S 4	620		7
8	7	4H S 4	620		7
9	10	4H S-1	100		-10
10	9	4H S 4	620		7

Board (35) Av: NS=-60

N-S	E-W	Contract	N-S	E-W	IMP
1	2	3D E 3	110		-2
2	1	3D W 3	110		-2
3	4	3D W 3	110		-2
4	3	3H N-2	100		-1
5	6	2H N 2	110		5
6	5	3S E-2	200		6
7	8	2H N 2	110		5
8	7	3D W 3	110		-2
9	10	3Hx N-2	300		-6
10	9	2NT W 3	150		-3

Board (36) Av: NS=+70

N-S	E-W	Contract	N-S	E-W	IMP
1	2	4H N-2	200		-7
2	1	3H N 3	140		2
3	4	4H N-1	100		-5
4	3	4C S-1	100		-5
5	6	4H N-1	100		-5
6	5	4H N 4	620		11
7	8	2H N 4	170		3
8	7	2H N 2	110		1
9	10	2Dx W-1	200		4
10	9	3Dx W-1	200		4