

第12回NRM杯 Session 1 Flight A 2007年6月23日(土)

**1**

♠32  
♥Q98  
♦Q43  
♣Q6543

♠KJ96  
♥J  
♦J10875  
♣J107

♠A74  
♥K10432  
♦AK2  
♣A9

♠Q1085  
♥A765  
♦96  
♣K82

**2**

♠A1084  
♥Q3  
♦A1086  
♣Q42

♠J3  
♥109652  
♦KJ  
♣K965

♠Q762  
♥A4  
♦Q743  
♣1083

♠K95  
♥KJ87  
♦952  
♣AJ7

**3**

♠AK6532  
♥A9  
♦A  
♣A853

♠Q4  
♥73  
♦KQ98653  
♣106

♠J107  
♥KQ10852  
♦7  
♣KQ2

♠98  
♥J64  
♦J1042  
♣J974

**4**

♠K64  
♥AK9  
♦76532  
♣J6

♠Q9853  
♥73  
♦9  
♣A9852

♠2  
♥J1042  
♦KJ108  
♣KQ103

♠AJ107  
♥Q865  
♦AQ4  
♣74

Board (1) Av: NS=-430

N-S	E-W	Contract	N-S	E-W	IMP
1	17	2NT E 2	120		7
4	8	3NT E 4	430		0
6	12	3NT E 3	400		1
7	5	3NT E 4	430		0
10	14	3NT E 3	400		1
11	13	3NT E 5	460		-1
15	9	3NT E 4	430		0
16	2	3NT E 5	460		-1
18	3	3NT W 4	430		0

Board (2) Av: NS=+100

N-S	E-W	Contract	N-S	E-W	IMP
1	17	3NT S 3	600		11
4	8	3NT S 3	600		11
6	12	3NT S-1	100		-5
7	5	3NT S 3	600		11
10	14	3NT S-1	100		-5
11	13	3NT S-1	100		-5
15	9	3NT S-1	100		-5
16	2	3NT S-1	100		-5
18	3	3NT S-1	100		-5

Board (3) Av: NS=+40

N-S	E-W	Contract	N-S	E-W	IMP
1	17	3C N 4	130		3
4	8	2S N 3	140		3
6	12	6C S-1	50		-3
7	5	4S N-1	50		-3
10	14	4S N-1	50		-3
11	13	3Dx W-2	500		10
15	9	2Dx W-1	200		4
16	2	4S N-1	50		-3
18	3	4S N-1	50		-3

Board (4) Av: NS=-110

N-S	E-W	Contract	N-S	E-W	IMP
1	17	2D S 2	90		5
4	8	4Sx N-2	500		-9
6	12	3C E 3	110		0
7	5	3NT N-2	200		-3
10	14	2NT N-1	100		0
11	13	3NT S-2	200		-3
15	9	3C E 5	150		-1
16	2	2S W-2	200		7
18	3	2NT N-1	100		0

**5**

♠J8  
♥AK97  
♦AK3  
♣9653

♠Q62  
♥QJ84  
♦742  
♣A108

♠A53  
♥1065  
♦109865  
♣J7

♠K10974  
♥32  
♦QJ  
♣KQ42

**6**

♠1086  
♥K93  
♦AK106  
♣AQ4

♠Q952  
♥J2  
♦9742  
♣K62

♠A7  
♥A8764  
♦J  
♣109753

♠KJ43  
♥Q105  
♦Q853  
♣J8

**7**

♠Q5  
♥KJ109432  
♦1098  
♣2

♠873  
♥A  
♦AK653  
♣AQ96

♠AKJ102  
♥Q765  
♦J  
♣K104

♠964  
♥8  
♦Q742  
♣J8753

**8**

♠A10843  
♥KJ5  
♦A8  
♣J98

♠J6  
♥Q10862  
♦K73  
♣1073

♠9  
♥9743  
♦Q10952  
♣AKQ

♠KQ752  
♥A  
♦J64  
♣6542

Board (5) Av: NS=+500

N-S	E-W	Contract	N-S	E-W	IMP
1	17	3NT N 3	600		3
4	8	3NT N 3	600		3
6	12	3NT N 3	600		3
7	5	3NT N-2	200		-12
10	14	3NT N 3	600		3
11	13	3NT N 3	600		3
15	9	3NT N 3	600		3
16	2	3NT N-1	100		-12
18	3	3NT N 3	600		3

Board (6) Av: NS=-70

N-S	E-W	Contract	N-S	E-W	IMP
1	17	3NT N-2	100		-1
4	8	3NT N-2	100		-1
6	12	3NT N-1	50		1
7	5	3NT N-2	100		-1
10	14	3NT N-1	50		1
11	13	3NT N-1	50		1
15	9	2NT N 3	150		6
16	2	3NT N-2	100		-1
18	3	3NT N-1	50		1

Board (7) Av: NS=-680

N-S	E-W	Contract	N-S	E-W	IMP
1	17	5S E 6	680		0
4	8	3NT E 6	690		0
6	12	6D W-1	100		13
7	5	4S E 6	680		0
10	14	4S E 6	680		0
11	13	6S E 6	1430		-13
15	9	4S E 6	680		0
16	2	6S E 6	1430		-13
18	3	6S E-1	100		13

Board (8) Av: NS=+220

N-S	E-W	Contract	N-S	E-W	IMP
4	17	4S N 4	420		5
5	10	4S N-1	50		-7
8	1	4S N 4	420		5
9	3	4S N-1	50		-7
11	16	4S N 4	420		5
13	2	4S N-1	50		-7
14	7	4S N-1	50		-7
15	12	4S N 4	420		5
18	6	4S N 4	420		5

第12回NRM杯 Session 1 Flight A 2007年6月23日(土)

9

♠ A62  
♥ QJ83  
♦ A  
♣ KQ983

♠ KQ8  
♥ 10974  
♦ J87654  
♣

♠ 953  
♥ A62  
♦ Q92  
♣ AJ105

♠ J1074  
♥ K5  
♦ K103  
♣ 7642

W — E  
S

10

♠ J752  
♥ A92  
♦ K96  
♣ 1076

♠ A96  
♥ 654  
♦ J874  
♣ Q95

♠ KQ108  
♥ Q1087  
♦ 3  
♣ J842

♠ 43  
♥ KJ3  
♦ AQ1052  
♣ AK3

N — E  
W — S

11

♠ KQ32  
♥ K542  
♦ 932  
♣ QJ

♠ A987  
♥  
♦ KJ1074  
♣ AK87

♠ J65  
♥ 1096  
♦ A  
♣ 1096542

♠ 104  
♥ AQJ873  
♦ Q865  
♣ 3

N — E  
W — S

12

♠ Q1063  
♥ A2  
♦ A32  
♣ A1098

♠ 754  
♥  
♦ Q97  
♣ KJ65432

♠ AJ92  
♥ K10987  
♦ KJ10  
♣ 7

♠ K8  
♥ QJ6543  
♦ 8654  
♣ Q

N — E  
W — S

Board (9) Av: NS=-70

N-S	E-W	Contract	N-S	E-W	IMP
4	17	1NT N 1	90		4
5	10	1NT N 2	120		5
8	1	3NT S-4	200		-4
9	3	3NT S-4	200		-4
11	16	5C N-2	100		-1
13	2	3NT S-2	100		-1
14	7	3Cx N-1	100		-1
15	12	1NT N 2	120		5
18	6	3NT S-4	200		-4

Board (10) Av: NS=+250

N-S	E-W	Contract	N-S	E-W	IMP
4	17	1NT S 4	180		-2
5	10	3NT S 3	600		8
8	1	3NT S-1	100		-8
9	3	1NT S 4	180		-2
11	16	3NT S 3	600		8
13	2	3NT S-1	100		-8
14	7	1NT S 2	120		-4
15	12	3NT S 3	600		8
18	6	1NT S 3	150		-3

Board (11) Av: NS=-380

N-S	E-W	Contract	N-S	E-W	IMP
4	17	5C E 6	420		-1
5	10	5C W 6	420		-1
8	1	3C W 6	170		5
9	3	5C E 6	420		-1
11	16	5C E 6	420		-1
13	2	5C E 6	420		-1
14	7	4C E 6	170		5
15	12	5C E 6	420		-1
18	6	5C E 6	420		-1

Board (12) Av: NS=-70

N-S	E-W	Contract	N-S	E-W	IMP
4	17	2Sx W-1	100		5
5	10	3NT N-2	200		-4
8	1	3C W-1	50		3
9	3	4H S-2	200		-4
11	16	2H S-1	100		-1
13	2	3NTxN-1	200		-4
14	7	3C W-1	50		3
15	12	4C W-2	100		5
18	6	3NTxN-2	500		-10

13

♠ A  
♥ KQ10632  
♦ K1073  
♣ AK

♠ KQJ74  
♥ J  
♦ J42  
♣ Q643

♠ 63  
♥ A9854  
♦ A96  
♣ 952

♠ 109852  
♥ 7  
♦ Q85  
♣ J1087

W — E  
S

14

♠ 43  
♥ QJ102  
♦ AJ107  
♣ A42

♠ A652  
♥ A9  
♦ Q8  
♣ KJ853

♠ J87  
♥ K743  
♦ K962  
♣ 76

♠ KQ109  
♥ 865  
♦ 543  
♣ Q109

N — E  
W — S

15

♠ A102  
♥ AK1092  
♦ 875  
♣ 64

♠ KJ9  
♥ J874  
♦ A2  
♣ K752

♠ Q65  
♥ 3  
♦ QJ10643  
♣ AQ10

♠ 8743  
♥ Q65  
♦ K9  
♣ J983

N — E  
W — S

16

♠ 1097  
♥ AK97  
♦ Q8  
♣ Q852

♠ AKQ2  
♥ Q1083  
♦ 1072  
♣ 103

♠ 6  
♥ 54  
♦ AJ543  
♣ AKJ76

♠ J8543  
♥ J62  
♦ K96  
♣ 94

N — E  
W — S

Board (13) Av: NS=0

N-S	E-W	Contract	N-S	E-W	IMP
4	17	3D N-1	100		-3
5	10	3D N 3	110		3
8	1	2D N 2	90		3
9	3	2D N-1	100		-3
11	16	4Hx N-1	200		-5
13	2	2H N 2	110		3
14	7	2D N 2	90		3
15	12	2H N 3	140		4
18	6	4H S-2	200		-5

Board (14) Av: NS=0

N-S	E-W	Contract	N-S	E-W	IMP
4	17	1NT E-2	100		3
5	10	1NT E 1	90		-3
8	1	1NT E 3	150		-4
9	3	2D N-2	100		-3
11	16	1NT E 3	150		-4
13	2	1NT E-2	100		3
14	7	1NT E-2	100		3
15	12	1NT W-3	150		4
18	6	1NT E-1	50		2

Board (15) Av: NS=-30

N-S	E-W	Contract	N-S	E-W	IMP
2	7	3D E 4	130		-3
4	11	3NT W-3	150		5
9	6	3NT W-2	100		4
10	17	3NT W-2	100		4
13	8	3D E 4	130		-3
14	1	3NT W-2	100		4
15	3	3D E 4	130		-3
16	5	3D E 5	150		-3
18	12	3D E 4	130		-3

Board (16) Av: NS=-420

N-S	E-W	Contract	N-S	E-W	IMP
2	7	3NT W 3	600		-5
4	11	Av+			3
9	6	3NT W-1	100		11
10	17	5D E 6	620		-5
13	8	3NT W-3	300		12
14	1	3NT W 4	630		-5
15	3	3NT W 5	660		-6
16	5	3D E 5	150		7
18	12	3NT W 4	630		-5

第12回NRM杯 Session 1 Flight A 2007年6月23日(土)

**17**

♠ 10974  
♥ J64  
♦ Q1087  
♣ KQ

♠ KJ63  
♥ A72  
♦ AJ64  
♣ 108

♠ AQ852  
♥ K98  
♦ K3  
♣ AJ3

♠  
♥ Q1053  
♦ 952  
♣ 976542

**18**

♠ 10  
♥ 74  
♦ AK1096542  
♣ J3

♠ K8432  
♥ AK8653  
♦ 8  
♣ 6

♠ A97  
♥ 2  
♦ J  
♣ AKQ109752

♠ QJ65  
♥ QJ109  
♦ Q73  
♣ 84

**19**

♠ 876  
♥ A74  
♦ Q1042  
♣ 975

♠ QJ52  
♥ K1083  
♦ 75  
♣ KJ2

♠ K104  
♥ J92  
♦ J9863  
♣ Q8

♠ A93  
♥ Q65  
♦ AK  
♣ A10643

**20**

♠ 10743  
♥ K83  
♦ J10  
♣ J1062

♠ J5  
♥ J10964  
♦ AQ96  
♣ A4

♠ AK8  
♥ A5  
♦ 854  
♣ Q8753

♠ Q962  
♥ Q72  
♦ K732  
♣ K9

Board (17) Av: NS=-90

N-S	E-W	Contract	N-S	E-W	IMP
2	7 4S	E 4		420	-8
4	11 6S	E-1	50		4
9	6 6S	E 6		980	-13
10	17 6S	E-1	50		4
13	8 6S	E-1	50		4
14	1 6S	E-1	50		4
15	3 6S	E-1	50		4
16	5 4S	E 5	450		-8
18	12 6S	E-1	50		4

Board (18) Av: NS=-600

N-S	E-W	Contract	N-S	E-W	IMP
2	7 6C	E 6		920	-8
4	11 6S	E-6	300		14
9	6 5C	E 6		420	5
10	17 5C	E 6		420	5
13	8 4Sx	W 4		590	0
14	1 5C	E 6		420	5
15	3 6C	E 6		920	-8
16	5 6C	E 7		940	-8
18	12 3NT	E 7		520	2

Board (19) Av: NS=+130

N-S	E-W	Contract	N-S	E-W	IMP
2	7 1NT	S 2	120		0
4	11 2NT	S 3	150		1
9	6 1NT	S 3	150		1
10	17 1NT	S 2	120		0
13	8 1NT	S 3	150		1
14	1 1NT	S-1		50	-5
15	3 1NT	S 2	120		0
16	5 1NT	S 2	120		0
18	12 1NT	S 2	120		0

Board (20) Av: NS=-510

N-S	E-W	Contract	N-S	E-W	IMP
2	7 3NT	E 3		600	-3
4	11 3NT	E 3		600	-3
9	6 3NT	E 3		600	-3
10	17 3NT	E 3		600	-3
13	8 3NT	E 4		630	-3
14	1 3NT	E-2	200		12
15	3 3NT	E 4		630	-3
16	5 3NT	E 4		630	-3
18	12 3NT	W-1	100		12

**21**

♠ Q975  
♥ 108742  
♦ 3  
♣ AJ8

♠ AJ82  
♥ A9  
♦ KJ84  
♣ 952

♠ K6  
♥ K653  
♦ AQ72  
♣ K103

♠ 1043  
♥ QJ  
♦ 10965  
♣ Q764

**22**

♠ A32  
♥ 10742  
♦ K10  
♣ K1082

♠ J108  
♥ A8  
♦ J952  
♣ AQ96

♠ KQ754  
♥ 9  
♦ AQ74  
♣ J54

♠ 96  
♥ KQJ653  
♦ 863  
♣ 73

**23**

♠ Q985  
♥ 7  
♦ KQ954  
♣ A54

♠ A10  
♥ KJ  
♦ 108  
♣ KJ109763

♠ KJ62  
♥ Q8542  
♦ A32  
♣ 2

♠ 743  
♥ A10963  
♦ J76  
♣ Q8

**24**

♠ K1042  
♥ Q87  
♦ 95  
♣ AQ84

♠ 65  
♥ KJ10963  
♦ J64  
♣ 95

♠ A5  
♥ A108732  
♦ KJ1063

♠ AQJ9873  
♥ 42  
♦ KQ  
♣ 72

Board (21) Av: NS=-420

N-S	E-W	Contract	N-S	E-W	IMP
2	7 3NT	E-1	50		10
4	11 3NT	E 3		400	1
9	6 3NT	E 4		430	0
10	17 3NT	E 3		400	1
13	8 3NT	E 4		430	0
14	1 3NT	E 4		430	0
15	3 3NT	E 4		430	0
16	5 3NT	E 4		430	0
18	12 3NT	E 4		430	0

Board (22) Av: NS=-580

N-S	E-W	Contract	N-S	E-W	IMP
1	11 5Hx	S-3		500	2
2	10 5S	E 5		650	-2
4	14 5S	W 5		650	-2
7	17 4S	E 4		620	-1
8	16 5Hx	S-3		500	2
9	18 4S	E 4		620	-1
12	3 4Sx	E 4		790	-5
13	5 5Hx	S-3		500	2
15	6 5Hx	S-3		500	2

Board (23) Av: NS=+10

N-S	E-W	Contract	N-S	E-W	IMP
1	11 3C	W 3		110	-3
2	10 3C	W 3		110	-3
4	14 3C	W 3		110	-3
7	17 4C	W-1	100		3
8	16 4H	E-3	300		7
9	18 5C	W-2	200		5
12	3 4H	W-2	200		5
13	5 3C	W 4		130	-4
15	6 3C	W 3		110	-3

Board (24) Av: NS=-130

N-S	E-W	Contract	N-S	E-W	IMP
1	11 5Hx	E-1	100		6
2	10 5Dx	E-1	100		6
4	14 5Dx	E 5		550	-9
7	17 5S	S-2		100	1
8	16 4S	S-1		50	2
9	18 5S	S-3		150	-1
12	3 5Dx	E 5		550	-9
13	5 5S	S-2		100	1
15	6 4S	S-1		50	2

第12回NRM杯 Session 1 Flight A 2007年6月23日(土)

25

♠ 9652  
♥ J1095  
♦ KQ7  
♣ 52

♠ A7  
♥ AK64  
♦ A9832  
♣ A7

♠ KQ  
♥ Q83  
♦ 106  
♣ KQJ1083

♠ J10843  
♥ 72  
♦ J54  
♣ 964

26

♠ 94  
♥ 10987632  
♦ 874  
♣ 4

♠ AQJ5  
♥  
♦ Q962  
♣ KQJ62

♠ 863  
♥ K54  
♦ A53  
♣ 10987

♠ K1072  
♥ AQJ  
♦ KJ10  
♣ A53

27

♠ 8753  
♥ Q943  
♦ QJ106  
♣ J

♠ 10964  
♥ K2  
♦ A93  
♣ K875

♠ KQJ  
♥ A5  
♦ 754  
♣ AQ1094

♠ A2  
♥ J10876  
♦ K82  
♣ 632

28

♠ KQJ98  
♥ AQJ8  
♦ A3  
♣ 92

♠ 10653  
♥ K1094  
♦ 65  
♣ K107

♠ 2  
♥ 765  
♦ KJ97  
♣ AJ863

♠ A74  
♥ 32  
♦ Q10842  
♣ Q54

Board (25) Av: NS=-1280

N-S	E-W	Contract	N-S	E-W	IMP
1	11	6C W 6	1370		-3
2	10	6C W 6	1370		-3
4	14	6C W 6	1370		-3
7	17	6NT W 6	1440		-4
8	16	6C W 6	1370		-3
9	18	6C W 6	1370		-3
12	3	4NT W 6	690		11
13	5	6NT W 7	1470		-5
15	6	6D E-1	100		16

Board (26) Av: NS=+180

N-S	E-W	Contract	N-S	E-W	IMP
1	11	2H S 4	170		0
2	10	4H S 4	620		10
4	14	4H S 4	620		10
7	17	3C E 3	110		-7
8	16	2H S 3	140		-1
9	18	3C E 3	110		-7
12	3	4H N-1	100		-7
13	5	4Hx S 4	790		12
15	6	4Cx E 4	710		-13

Board (27) Av: NS=-430

N-S	E-W	Contract	N-S	E-W	IMP
1	11	3NT W 4	430		0
2	10	3NT W 4	430		0
4	14	3NT W 4	430		0
7	17	3NT W 4	430		0
8	16	3NT W 4	430		0
9	18	3NT W 4	430		0
12	3	3NT W 4	430		0
13	5	3NT W 4	430		0
15	6	3NT W 4	430		0

Board (28) Av: NS=-130

N-S	E-W	Contract	N-S	E-W	IMP
1	11	4S N-2	200		-2
2	10	4S S-1	100		1
4	14	4S N-1	100		1
7	17	4S N 4	620		13
8	16	4S N-1	100		1
9	18	4S N-1	100		1
12	3	4S N-2	200		-2
13	5	4S N-1	100		1
15	6	4S N-2	200		-2

第12回NRM杯 Session 1 Flight B 2007年6月23日(土)

**1**

♠32  
♥Q98  
♦Q43  
♣Q6543

♠KJ96  
♥J  
♦J10875  
♣J107

♠A74  
♥K10432  
♦AK2  
♣A9

♠Q1085  
♥A765  
♦96  
♣K82

**2**

♠A1084  
♥Q3  
♦A1086  
♣Q42

♠J3  
♥109652  
♦KJ  
♣K965

♠Q762  
♥A4  
♦Q743  
♣1083

♠K95  
♥KJ87  
♦952  
♣AJ7

**3**

♠AK6532  
♥A9  
♦A  
♣A853

♠Q4  
♥73  
♦KQ98653  
♣106

♠J107  
♥KQ10852  
♦7  
♣KQ2

♠98  
♥J64  
♦J1042  
♣J974

**4**

♠K64  
♥AK9  
♦76532  
♣J6

♠Q9853  
♥73  
♦9  
♣A9852

♠2  
♥J1042  
♦KJ108  
♣KQ103

♠AJ107  
♥Q865  
♦AQ4  
♣74

Board (1) Av: NS=-430

N-S	E-W	Contract	N-S	E-W	IMP
1	17	3NT E 4	430	0	
4	8	3NT E 3	400	1	
6	12	3NT E 4	430	0	
7	5	3NT E 6	490	-2	
10	14	3NT E-1 50	10		
11	13	3NT E 4	430	0	
15	9	3NT E 4	430	0	
16	2	3NT E 3	400	1	
18	3	3NT E 5	460	-1	

Board (2) Av: NS=+100

N-S	E-W	Contract	N-S	E-W	IMP
1	17	3NT S-2	200	-7	
4	8	2NT S 2 120	120	1	
6	12	3NT S 3 600	600	11	
7	5	3NT S-2	200	-7	
10	14	3NT S 3 600	600	11	
11	13	3NT S-1	100	-5	
15	9	3NT S-1	100	-5	
16	2	3NT N 3 600	600	11	
18	3	3NT S-2	200	-7	

Board (3) Av: NS=+150

N-S	E-W	Contract	N-S	E-W	IMP
1	17	4S N-1	50	-5	
4	8	3D W-2 200	200	2	
6	12	2S N 4 170	170	1	
7	5	4S N-2 100	100	-6	
10	14	3Dx E-2 500	500	8	
11	13	3D W-3 300	300	4	
15	9	3S N 3 140	140	0	
16	2	3S N 3 140	140	0	
18	3	3S N 3 140	140	0	

Board (4) Av: NS=+30

N-S	E-W	Contract	N-S	E-W	IMP
1	17	3NT S 3 600	600	11	
4	8	3D N 3 110	110	2	
6	12	3C E 4 130	130	-4	
7	5	2NT N 2 120	120	3	
10	14	1NT S 1 90	90	2	
11	13	2D S 2 90	90	2	
15	9	2C W 4 130	130	-4	
16	2	5Dx N-2 500	500	-11	
18	3	2D S 2 90	90	2	

**5**

♠J8  
♥AK97  
♦AK3  
♣9653

♠Q62  
♥QJ84  
♦742  
♣A108

♠A53  
♥1065  
♦109865  
♣J7

♠K10974  
♥32  
♦QJ  
♣KQ42

**6**

♠1086  
♥K93  
♦AK106  
♣AQ4

♠Q952  
♥J2  
♦9742  
♣K62

♠A7  
♥A8764  
♦J  
♣109753

♠KJ43  
♥Q105  
♦Q853  
♣J8

**7**

♠Q5  
♥KJ109432  
♦1098  
♣2

♠873  
♥A  
♦AK653  
♣AQ96

♠AKJ102  
♥Q765  
♦J  
♣K104

♠964  
♥8  
♦Q742  
♣J8753

**8**

♠A10843  
♥KJ5  
♦A8  
♣J98

♠J6  
♥Q10862  
♦K73  
♣1073

♠9  
♥9743  
♦Q10952  
♣AKQ

♠KQ752  
♥A  
♦J64  
♣6542

Board (5) Av: NS=+500

N-S	E-W	Contract	N-S	E-W	IMP
1	17	3NT N 3 600	600	3	
4	8	3NT N 3 600	600	3	
6	12	3NT N-1 100	100	-12	
7	5	3NT N 3 600	600	3	
10	14	3NT N 3 600	600	3	
11	13	3NT N 4 630	630	4	
15	9	3NT N 3 600	600	3	
16	2	5C S-2 200	200	-12	
18	3	3NT N 3 600	600	3	

Board (6) Av: NS=0

N-S	E-W	Contract	N-S	E-W	IMP
1	17	3NT N-1	50	-2	
4	8	3NT N-1	50	-2	
6	12	2NT N 2 120	120	3	
7	5	2NT N 2 120	120	3	
10	14	3NT N-1	50	-2	
11	13	3NT N-1	50	-2	
15	9	2NT N 2 120	120	3	
16	2	3NT N-1	50	-2	
18	3	3NT N-1	50	-2	

Board (7) Av: NS=-1020

N-S	E-W	Contract	N-S	E-W	IMP
1	17	4S E 6 680	680	8	
4	8	4S E 6 680	680	8	
6	12	2Hx N-3 800	800	6	
7	5	4S E 6 680	680	8	
10	14	6S E 6 1430	1430	-9	
11	13	6S W 7 1460	1460	-10	
15	9	6S E 6 1430	1430	-9	
16	2	6S E 6 1430	1430	-9	
18	3	4NT W 6 690	690	8	

Board (8) Av: NS=+290

N-S	E-W	Contract	N-S	E-W	IMP
4	17	4S N 4 420	420	4	
5	10	4S N 4 420	420	4	
8	1	4S N 4 420	420	4	
9	3	5Hx E-3 500	500	5	
11	16	4S N-1	50	-8	
13	2	4S N-1	50	-8	
14	7	4S N 4 420	420	4	
15	12	4S N 4 420	420	4	
18	6	4S N-2 100	100	-9	

第12回NRM杯 Session 1 Flight B 2007年6月23日(土)

9

♠ A62  
♥ QJ83  
♦ A  
♣ KQ983

♠ KQ8  
♥ 10974  
♦ J87654  
♣

♠ 953  
♥ A62  
♦ Q92  
♣ AJ105

♠ J1074  
♥ K5  
♦ K103  
♣ 7642

W—E  
S

10

♠ J752  
♥ A92  
♦ K96  
♣ 1076

♠ A96  
♥ 654  
♦ J874  
♣ Q95

♠ KQ108  
♥ Q1087  
♦ 3  
♣ J842

♠ 43  
♥ KJ3  
♦ AQ1052  
♣ AK3

N  
W—E  
S

11

♠ KQ32  
♥ K542  
♦ 932  
♣ QJ

♠ A987  
♥  
♦ KJ1074  
♣ AK87

♠ J65  
♥ 1096  
♦ A  
♣ 1096542

♠ 104  
♥ AQJ873  
♦ Q865  
♣ 3

N  
W—E  
S

12

♠ Q1063  
♥ A2  
♦ A32  
♣ A1098

♠ 754  
♥  
♦ Q97  
♣ KJ65432

♠ AJ92  
♥ K10987  
♦ KJ10  
♣ 7

♠ K8  
♥ QJ6543  
♦ 8654  
♣ Q

N  
W—E  
S

Board (9) Av: NS=-50

N-S	E-W	Contract	N-S	E-W	IMP
4	17	3NT S-2	100		-2
5	10	2NT S-2	100		-2
8	1	3NT S-4	200		-4
9	3	6Cx N-4	800		-13
11	16	3D W 3	110		-2
13	2	2S N-1	50		0
14	7	1NT N 1	90		4
15	12	1NT N 2	120		5
18	6	1NT N 1	90		4

Board (10) Av: NS=+410

N-S	E-W	Contract	N-S	E-W	IMP
4	17	3NT S 3	600		5
5	10	1NT S 2	120		-7
8	1	3NT S-1	100		-11
9	3	3NT S 3	600		5
11	16	1NT S 3	150		-6
13	2	3NT S 3	600		5
14	7	3NT S 3	600		5
15	12	3NT S 3	600		5
18	6	1NT S 4	180		-6

Board (11) Av: NS=-310

N-S	E-W	Contract	N-S	E-W	IMP
4	17	5C E 6	420		-3
5	10	5C E 6	420		-3
8	1	4C E 6	170		4
9	3	5C E 6	420		-3
11	16	3H S 3	140		10
13	2	5C W 6	420		-3
14	7	5C E 6	420		-3
15	12	4C E 6	170		4
18	6	4D W 5	150		4

Board (12) Av: NS=-20

N-S	E-W	Contract	N-S	E-W	IMP
4	17	4H N-3	300		-7
5	10	2H S-1	100		-2
8	1	3C W-1	50		2
9	3	2C W 2	90		-2
11	16	4H S-1	100		-2
13	2	3C W-2	100		3
14	7	2H S 2	110		4
15	12	2H S 2	110		4
18	6	3NT N-1	100		-2

13

♠ A  
♥ KQ10632  
♦ K1073  
♣ AK

♠ KQJ74  
♥ J  
♦ J42  
♣ Q643

♠ 63  
♥ A9854  
♦ A96  
♣ 952

♠ 109852  
♥ 7  
♦ Q85  
♣ J1087

W—E  
S

14

♠ 43  
♥ QJ102  
♦ AJ107  
♣ A42

♠ A652  
♥ A9  
♦ Q8  
♣ KJ853

♠ J87  
♥ K743  
♦ K962  
♣ 76

♠ KQ109  
♥ 865  
♦ 543  
♣ Q109

N  
W—E  
S

15

♠ A102  
♥ AK1092  
♦ 875  
♣ 64

♠ KJ9  
♥ J874  
♦ A2  
♣ K752

♠ Q65  
♥ 3  
♦ QJ10643  
♣ AQ10

♠ 8743  
♥ Q65  
♦ K9  
♣ J983

N  
W—E  
S

16

♠ 1097  
♥ AK97  
♦ Q8  
♣ Q852

♠ AKQ2  
♥ Q1083  
♦ 1072  
♣ 103

♠ 6  
♥ 54  
♦ AJ543  
♣ AKJ76

♠ J8543  
♥ J62  
♦ K96  
♣ 94

N  
W—E  
S

Board (13) Av: NS=+50

N-S	E-W	Contract	N-S	E-W	IMP
4	17	2H N 2	110		2
5	10	2D N 2	90		1
8	1	2D N-2	200		-6
9	3	2D N 2	90		1
11	16	2D N 3	110		2
13	2	3H N 4	170		3
14	7	3D N-1	100		-4
15	12	2D N-1	100		-4
18	6	2Sx W-2	500		10

Board (14) Av: NS=-20

N-S	E-W	Contract	N-S	E-W	IMP
4	17	1NT S 1	90		3
5	10	1NT E 1	90		-2
8	1	1NT E-1	50		2
9	3	2H N-2	100		-2
11	16	1NT W-1	50		2
13	2	1NT E-2	100		3
14	7	1NT E 1	90		-2
15	12	1NT E 2	120		-3
18	6	2D N-1	50		-1

Board (15) Av: NS=-70

N-S	E-W	Contract	N-S	E-W	IMP
2	7	3D E 5	150		-2
4	11	3D E 4	130		-2
9	6	2NT E-1	50		3
10	17	3D E 4	130		-2
13	8	2Hx N-1	200		-4
14	1	3C W-3	150		6
15	3	3NT W-3	150		6
16	5	3D E 5	150		-2
18	12	3D E 4	130		-2

Board (16) Av: NS=-210

N-S	E-W	Contract	N-S	E-W	IMP
2	7	3NT W 4	630		-9
4	11	3NT W 4	630		-9
9	6	2NT W 3	150		2
10	17	3NT E-2	200		9
13	8	3NT W 3	600		-9
14	1	6D W-2	200		9
15	3	6D W-3	300		11
16	5	3NT W-1	100		7
18	12	3NT W 3	600		-9

**17**

♠ 10974  
♥ J64  
♦ Q1087  
♣ KQ

♠ KJ63  
♥ A72  
♦ AJ64  
♣ 108

♠ AQ852  
♥ K98  
♦ K3  
♣ AJ3

♠  
♥ Q1053  
♦ 952  
♣ 976542

**18**

♠ 10  
♥ 74  
♦ AK1096542  
♣ J3

♠ K8432  
♥ AK8653  
♦ 8  
♣ 6

♠ A97  
♥ 2  
♦ J  
♣ AKQ109752

♠ QJ65  
♥ QJ109  
♦ Q73  
♣ 84

**19**

♠ 876  
♥ A74  
♦ Q1042  
♣ 975

♠ QJ52  
♥ K1083  
♦ 75  
♣ KJ2

♠ K104  
♥ J92  
♦ J9863  
♣ Q8

♠ A93  
♥ Q65  
♦ AK  
♣ A10643

**20**

♠ 10743  
♥ K83  
♦ J10  
♣ J1062

♠ J5  
♥ J10964  
♦ AQ96  
♣ A4

♠ AK8  
♥ A5  
♦ 854  
♣ Q8753

♠ Q962  
♥ Q72  
♦ K732  
♣ K9

Board (17) Av: NS=-10

N-S	E-W	Contract	N-S	E-W	IMP
2	7 4S	E 5		450	-10
4	11 6S	E-1 50			2
9	6 4S	E 5	450		-10
10	17 6S	E-2 100			3
13	8 7S	E-2 100			3
14	1 6S	E-1 50			2
15	3 6S	E-2 100			3
16	5 6S	E-1 50			2
18	12 6S	E-1 50			2

Board (18) Av: NS=-270

N-S	E-W	Contract	N-S	E-W	IMP
2	7 5C	E 7		440	-5
4	11 5C	E 6		420	-4
9	6 5C	E 6		420	-4
10	17 6H	W-2 100			9
13	8 5C	E 6		420	-4
14	1 5S	W-2 100			9
15	3 7Cx	E-1 100			9
16	5 6C	E 6		920	-12
18	12 5C	E 6		420	-4

Board (19) Av: NS=+110

N-S	E-W	Contract	N-S	E-W	IMP
2	7 1NT	S 1		90	-1
4	11 1NT	S 2 120			0
9	6 1NT	S-1		50	-4
10	17 1NT	S 1		90	-1
13	8 1NT	S 3 150			1
14	1 1NT	S 1		90	-1
15	3 1NT	S 2 120			0
16	5 2NT	S 3 150			1
18	12 1NT	S 2 120			0

Board (20) Av: NS=-490

N-S	E-W	Contract	N-S	E-W	IMP
2	7 3NT	E 3		600	-3
4	11 3NT	E-2 200			12
9	6 3NT	E 3		600	-3
10	17 3NT	E 4		630	-4
13	8 3NT	E 3		600	-3
14	1 3NT	E 3		600	-3
15	3 3NT	E-2 200			12
16	5 3NT	E 3		600	-3
18	12 3NT	E 4		630	-4

**21**

♠ Q975  
♥ 108742  
♦ 3  
♣ AJ8

♠ AJ82  
♥ A9  
♦ KJ84  
♣ 952

♠ K6  
♥ K653  
♦ AQ72  
♣ K103

♠ 1043  
♥ QJ  
♦ 10965  
♣ Q764

**22**

♠ A32  
♥ 10742  
♦ K10  
♣ K1082

♠ J108  
♥ A8  
♦ J952  
♣ AQ96

♠ KQ754  
♥ 9  
♦ AQ74  
♣ J54

♠ 96  
♥ KQJ653  
♦ 863  
♣ 73

**23**

♠ Q985  
♥ 7  
♦ KQ954  
♣ A54

♠ A10  
♥ KJ  
♦ 108  
♣ KJ109763

♠ KJ62  
♥ Q8542  
♦ A32  
♣ 2

♠ 743  
♥ A10963  
♦ J76  
♣ Q8

**24**

♠ K1042  
♥ Q87  
♦ 95  
♣ AQ84

♠ 65  
♥ KJ10963  
♦ J64  
♣ 95

♠ A5  
♥ A108732  
♦ KJ1063

♠ AQJ9873  
♥ 42  
♦ KQ  
♣ 72

Board (21) Av: NS=-400

N-S	E-W	Contract	N-S	E-W	IMP
2	7 3NT	E 3		400	0
4	11 3NT	E 4		430	-1
9	6 3NT	E 3		400	0
10	17 3NT	E 3		400	0
13	8 3NT	E 3		400	0
14	1 3NT	E 3		400	0
15	3 3NT	E 4		430	-1
16	5 3NT	E 3		400	0
18	12 3NT	E 3		400	0

Board (22) Av: NS=-650

N-S	E-W	Contract	N-S	E-W	IMP
1	11 4S	E 5		650	0
2	10 5Hx	S-3		500	4
4	14 4S	E 5		650	0
7	17 4S	E 5		650	0
8	16 4S	E 5		650	0
9	18 4S	E 4		620	1
12	3 4S	E 5		650	0
13	5 4S	E 5		650	0
15	6 4S	E 5		650	0

Board (23) Av: NS=+40

N-S	E-W	Contract	N-S	E-W	IMP
1	11 4C	W-1		100	2
2	10 3NT	E-2 200			4
4	14 3C	W 3		110	-4
7	17 3C	W 3		110	-4
8	16 3NT	E-2 200			4
9	18 3H	W-1		100	2
12	3 3C	W 3		110	-4
13	5 3NT	E-3 300			6
15	6 3C	W 3		110	-4

Board (24) Av: NS=-20

N-S	E-W	Contract	N-S	E-W	IMP
1	11 4S	S-1		50	-1
2	10 6Dx	E-1 100			3
4	14 4S	S 4 420			10
7	17 4S	S-1		50	-1
8	16 5D	E-1 50			2
9	18 5S	S-1		50	-1
12	3 5Dx	E 5		550	-11
13	5 4S	S-1		50	-1
15	6 5S	S-2		100	-2

25

♠ 9652  
♥ J1095  
♦ KQ7  
♣ 52

♠ A7  
♥ AK64  
♦ A9832  
♣ A7

♠ KQ  
♥ Q83  
♦ 106  
♣ KQJ1083

♠ J10843  
♥ 72  
♦ J54  
♣ 964

26

♠ 94  
♥ 10987632  
♦ 874  
♣ 4

♠ AQJ5  
♥  
♦ Q962  
♣ KQJ62

♠ 863  
♥ K54  
♦ A53  
♣ 10987

♠ K1072  
♥ AQJ  
♦ KJ10  
♣ A53

27

♠ 8753  
♥ Q943  
♦ QJ106  
♣ J

♠ 10964  
♥ K2  
♦ A93  
♣ K875

♠ KQJ  
♥ A5  
♦ 754  
♣ AQ1094

♠ A2  
♥ J10876  
♦ K82  
♣ 632

28

♠ KQJ98  
♥ AQJ8  
♦ A3  
♣ 92

♠ 10653  
♥ K1094  
♦ 65  
♣ K107

♠ 2  
♥ 765  
♦ KJ97  
♣ AJ863

♠ A74  
♥ 32  
♦ Q10842  
♣ Q54

Board (25) Av: NS=-1420

N-S	E-W	Contract	N-S	E-W	IMP
1	11	6C W 6	1370		2
2	10	6NT W 6	1440		-1
4	14	6NT E 6	1440		-1
7	17	6NT E 7	1470		-2
8	16	6C W 6	1370		2
9	18	6C W 6	1370		2
12	3	6NT W 6	1440		-1
13	5	6NT E 7	1470		-2
15	6	6NT W 6	1440		-1

Board (26) Av: NS=+250

N-S	E-W	Contract	N-S	E-W	IMP
1	11	4H S 4	620		9
2	10	2H S 4	170		-2
4	14	3C E 3		110	-8
7	17	3H S 4	170		-2
8	16	4C E 4		130	-9
9	18	4H N 4	620		9
12	3	2H S 3	140		-3
13	5	4H N 4	620		9
15	6	3H N 3	140		-3

Board (27) Av: NS=-430

N-S	E-W	Contract	N-S	E-W	IMP
1	11	3NT W 3	400		1
2	10	3NT W 5	460		-1
4	14	3NT W 4	430		0
7	17	3NT W 5	460		-1
8	16	3NT W 5	460		-1
9	18	3NT W 4	430		0
12	3	3NT W 4	430		0
13	5	3NT W 3	400		1
15	6	3NT W 4	430		0

Board (28) Av: NS=-170

N-S	E-W	Contract	N-S	E-W	IMP
1	11	4S N-2	200		-1
2	10	4S N-1	100		2
4	14	4S N-2	200		-1
7	17	4S N-2	200		-1
8	16	4S N-2	200		-1
9	18	4S N-2	200		-1
12	3	4S N-2	200		-1
13	5	4S N-1	100		2
15	6	4S N-1	100		2



第12回NRM杯 Session 1 Flight C 2007年6月23日(土)

**1**

♠32  
♥Q98  
♦Q43  
♣Q6543

♠KJ96  
♥J  
♦J10875  
♣J107

♠A74  
♥K10432  
♦AK2  
♣A9

♠Q1085  
♥A765  
♦96  
♣K82

**2**

♠A1084  
♥Q3  
♦A1086  
♣Q42

♠J3  
♥109652  
♦KJ  
♣K965

♠Q762  
♥A4  
♦Q743  
♣1083

♠K95  
♥KJ87  
♦952  
♣AJ7

**3**

♠AK6532  
♥A9  
♦A  
♣A853

♠Q4  
♥73  
♦KQ98653  
♣106

♠J107  
♥KQ10852  
♦7  
♣KQ2

♠98  
♥J64  
♦J1042  
♣J974

**4**

♠K64  
♥AK9  
♦76532  
♣J6

♠Q9853  
♥73  
♦9  
♣A9852

♠2  
♥J1042  
♦KJ108  
♣KQ103

♠AJ107  
♥Q865  
♦AQ4  
♣74

Board (1) Av: NS=-400

N-S	E-W	Contract	N-S	E-W	IMP
1	5	3NT E 4	430		-1
2	7	2D E 5	150		6
3	6	3NT E 3	400		0
4	8	3NT E 4	430		-1
10	13	3NT E 6	490		-3
14	12	3NT E 6	490		-3
15	9	2NT E 5	210		5
16	11	3NT E 5	460		-2

Board (2) Av: NS=+140

N-S	E-W	Contract	N-S	E-W	IMP
1	5	3NT S-2	200		-8
2	7	2NT S 2	120		-1
3	6	3NT S 3	600		10
4	8	2NT S-1	100		-6
10	13	2NT S 3	150		0
14	12	3NT S-1	100		-6
15	9	2NT S 3	150		0
16	11	3NT S 4	630		10

Board (3) Av: NS=+30

N-S	E-W	Contract	N-S	E-W	IMP
1	5	4Sx N-1	100		-4
2	7	4S N-2	100		-4
3	6	3S N 3	140		3
4	8	3S N 4	170		4
10	13	2S N 3	140		3
14	12	3S N 3	140		3
15	9	5C S-3	150		-5
16	11	4S N-1	50		-2

Board (4) Av: NS=+120

N-S	E-W	Contract	N-S	E-W	IMP
1	5	1NT N 2	120		0
2	7	3NT N 3	600		10
3	6	2NT N 2	120		0
4	8	2D S 2	90		-1
10	13	3D S 3	110		0
14	12	2NT N 2	120		0
15	9	2NT N 2	120		0
16	11	2D S 3	110		0

**5**

♠J8  
♥AK97  
♦AK3  
♣9653

♠Q62  
♥QJ84  
♦742  
♣A108

♠A53  
♥1065  
♦109865  
♣J7

♠K10974  
♥32  
♦QJ  
♣KQ42

**6**

♠1086  
♥K93  
♦AK106  
♣AQ4

♠Q952  
♥J2  
♦9742  
♣K62

♠A7  
♥A8764  
♦J  
♣109753

♠KJ43  
♥Q105  
♦Q853  
♣J8

**7**

♠Q5  
♥KJ109432  
♦1098  
♣2

♠873  
♥A  
♦AK653  
♣AQ96

♠AKJ102  
♥Q765  
♦J  
♣K104

♠964  
♥8  
♦Q742  
♣J8753

**8**

♠A10843  
♥KJ5  
♦A8  
♣J98

♠J6  
♥Q10862  
♦K73  
♣1073

♠9  
♥9743  
♦Q10952  
♣AKQ

♠KQ752  
♥A  
♦J64  
♣6542

Board (5) Av: NS=+250

N-S	E-W	Contract	N-S	E-W	IMP
1	5	3NT N-1	100		-8
2	7	3NT N 3	600		8
3	6	3NT N 3	600		8
4	8	3NT N-1	100		-8
10	13	3NT N 3	600		8
14	12	3NT N 3	600		8
15	9	3NT N-2	200		-10
16	11	3NT N-1	100		-8

Board (6) Av: NS=+60

N-S	E-W	Contract	N-S	E-W	IMP
1	5	2Hx E-3	800		12
2	7	3NT N-5	250		-7
3	6	3NT N-1	50		-3
4	8	3NT N-1	50		-3
10	13	3NT N-1	50		-3
14	12	3NT N 3	400		8
15	9	2NT N 3	150		3
16	11	3NT N-1	50		-3

Board (7) Av: NS=-540

N-S	E-W	Contract	N-S	E-W	IMP
1	5	4S E 5	650		-3
2	7	3NT W 6	690		-4
3	6	4S E 5	650		-3
4	8	6NT E-1	100		12
10	13	4S E 6	680		-4
14	12	6S E-1	100		12
15	9	6S E 6	1430		-13
16	11	4S E 6	680		-4

Board (8) Av: NS=+260

N-S	E-W	Contract	N-S	E-W	IMP
1	8	4S N-1	50		-7
2	6	4S N 4	420		4
4	7	4S N 4	420		4
5	3	4S N-1	50		-7
9	14	4S N 4	420		4
11	15	4S N 4	420		4
12	13	4S N-1	50		-7
16	10	4S N 4	420		4

9

♠A62  
♥QJ83  
♦A  
♣KQ983

♠KQ8  
♥10974  
♦J87654  
♣

♠953  
♥A62  
♦Q92  
♣AJ105

♠J1074  
♥K5  
♦K103  
♣7642

10

♠J752  
♥A92  
♦K96  
♣1076

♠A96  
♥654  
♦J874  
♣Q95

♠KQ108  
♥Q1087  
♦3  
♣J842

♠43  
♥KJ3  
♦AQ1052  
♣AK3

11

♠KQ32  
♥K542  
♦932  
♣QJ

♠A987  
♥  
♦KJ1074  
♣AK87

♠J65  
♥1096  
♦A  
♣1096542

♠104  
♥AQJ873  
♦Q865  
♣3

12

♠Q1063  
♥A2  
♦A32  
♣A1098

♠754  
♥  
♦Q97  
♣KJ65432

♠AJ92  
♥K10987  
♦KJ10  
♣7

♠K8  
♥QJ6543  
♦8654  
♣Q

Board (9) Av: NS=-50

N-S	E-W	Contract	N-S	E-W	IMP
1	8	1NT N 2	120		5
2	6	1NT N 3	150		5
4	7	3NT S-3		150	-3
5	3	2C N 2	90		4
9	14	4S S-2		100	-2
11	15	2NT S-3		150	-3
12	13	3NT S-3		150	-3
16	10	3NT N-2		100	-2

Board (10) Av: NS=+450

N-S	E-W	Contract	N-S	E-W	IMP
1	8	3NT S-2		200	-12
2	6	3NT S 3	600		4
4	7	1NT S 3	150		-7
5	3	1NT S 3	150		-7
9	14	3NT S 3	600		4
11	15	3NT S 3	600		4
12	13	3NT S 3	600		4
16	10	3NT S 3	600		4

Board (11) Av: NS=-460

N-S	E-W	Contract	N-S	E-W	IMP
1	8	5C E 6		420	1
2	6	3C E 6		170	7
4	7	5C E 6		420	1
5	3	5C E 6		420	1
9	14	6C E 6		920	-10
11	15	4D W-2	100		11
12	13	6C E 6		920	-10
16	10	5C E 5		400	2

Board (12) Av: NS=-10

N-S	E-W	Contract	N-S	E-W	IMP
1	8	1NT S 1	90		3
2	6	3C W-1	50		2
4	7	1NT S-1		100	-3
5	3	3C W-2	100		3
9	14	2H S-1		100	-3
11	15	1NT S 1	90		3
12	13	4H S-1		100	-3
16	10	2H S-1		100	-3

13

♠A  
♥KQ10632  
♦K1073  
♣AK

♠KQJ74  
♥J  
♦J42  
♣Q643

♠63  
♥A9854  
♦A96  
♣952

♠109852  
♥7  
♦Q85  
♣J1087

14

♠43  
♥QJ102  
♦AJ107  
♣A42

♠A652  
♥A9  
♦Q8  
♣KJ853

♠J87  
♥K743  
♦K962  
♣76

♠KQ109  
♥865  
♦543  
♣Q109

15

♠A102  
♥AK1092  
♦875  
♣64

♠KJ9  
♥J874  
♦A2  
♣K752

♠Q65  
♥3  
♦QJ10643  
♣AQ10

♠8743  
♥Q65  
♦K9  
♣J983

16

♠1097  
♥AK97  
♦Q8  
♣Q852

♠AKQ2  
♥Q1083  
♦1072  
♣103

♠6  
♥54  
♦AJ543  
♣AKJ76

♠J8543  
♥J62  
♦K96  
♣94

Board (13) Av: NS=+90

N-S	E-W	Contract	N-S	E-W	IMP
1	8	2H N 3	140		2
2	6	3H N 3	140		2
4	7	2D N-1		100	-5
5	3	2H N 3	140		2
9	14	2D N 4	130		1
11	15	3H N 3	140		2
12	13	3D N-2		200	-7
16	10	2H S 2	110		1

Board (14) Av: NS=-40

N-S	E-W	Contract	N-S	E-W	IMP
1	8	1NT E 2		120	-2
2	6	1NT E 4		180	-4
4	7	1NT E-1	50		3
5	3	1NT E-2	100		4
9	14	1NT E-1	50		3
11	15	2D N-3		150	-3
12	13	1NT W-1	50		3
16	10	1NT E 2		120	-2

Board (15) Av: NS=-110

N-S	E-W	Contract	N-S	E-W	IMP
2	5	3NT W 4		430	-8
3	8	3D E 5		150	-1
6	4	3D E 5		150	-1
7	1	3NT W-2	100		5
9	13	3NT W-2	100		5
10	15	3NT W-2	100		5
11	14	3D E 5		150	-1
16	12	3NT W 3		400	-7

Board (16) Av: NS=-280

N-S	E-W	Contract	N-S	E-W	IMP
2	5	1NT N-4		200	2
3	8	3D E 6		170	3
6	4	3NT W 5		660	-9
7	1	3NT W-1	100		9
9	13	2C W 4		130	4
10	15	3NT E 4		630	-8
11	14	5D E 6		620	-8
16	12	2NT W-1	100		9

**17** ♠10974  
♥J64  
♦Q1087  
♣KQ

♠KJ63 ♠AQ852  
♥A72 ♥K98  
♦AJ64 ♦K3  
♣108 ♣AJ3

♠  
♥Q1053  
♦952  
♣976542

**18** ♠10  
♥74  
♦AK1096542  
♣J3

♠K8432 ♠A97  
♥AK8653 ♥2  
♦8 ♦J  
♣6 ♣AKQ109752

♠QJ65  
♥QJ109  
♦Q73  
♣84

**19** ♠876  
♥A74  
♦Q1042  
♣975

♠QJ52 ♠K104  
♥K1083 ♥J92  
♦75 ♦J9863  
♣KJ2 ♣Q8

♠A93  
♥Q65  
♦AK  
♣A10643

**20** ♠10743  
♥K83  
♦J10  
♣J1062

♠J5 ♠AK8  
♥J10964 ♥A5  
♦AQ96 ♦854  
♣A4 ♣Q8753

♠Q962  
♥Q72  
♦K732  
♣K9

Board (17) Av: NS=-120

N-S	E-W	Contract	N-S	E-W	IMP
2	5	6S E-1	50		5
3	8	6S E-1	50		5
6	4	6S E-1	50		5
7	1	6S E-1	50		5
9	13	4S E 5	450		-8
10	15	6S E-1	50		5
11	14	5S E 5	450		-8
16	12	5S E 5	450		-8

Board (18) Av: NS=-490

N-S	E-W	Contract	N-S	E-W	IMP
2	5	4S W-1	50		11
3	8	4S W 5	450		1
6	4	6NT E 6	990		-11
7	1	5C E 6	420		2
9	13	6C E 6	920		-10
10	15	5H W-1	50		11
11	14	5C E 6	420		2
16	12	5Dx N-3	800		-7

Board (19) Av: NS=+90

N-S	E-W	Contract	N-S	E-W	IMP
2	5	1NT S 3	150		2
3	8	1NT S 1	90		0
6	4	1NT S 3	150		2
7	1	1NT S 1	90		0
9	13	1NT S-1	50		-4
10	15	1NT S-1	50		-4
11	14	1NT S 2	120		1
16	12	1NT N 2	120		1

Board (20) Av: NS=-520

N-S	E-W	Contract	N-S	E-W	IMP
2	5	3NT E 3	600		-2
3	8	2NT E 2	120		9
6	4	3NT E 3	600		-2
7	1	3NT E 3	600		-2
9	13	3NT E 4	630		-3
10	15	3NT E 3	600		-2
11	14	3NT E 3	600		-2
16	12	3NT E-2	200		12

**21** ♠Q975  
♥108742  
♦3  
♣AJ8

♠AJ82 ♠K6  
♥A9 ♥K653  
♦KJ84 ♦AQ72  
♣952 ♣K103

♠1043  
♥QJ  
♦10965  
♣Q764

**22** ♠A32  
♥10742  
♦K10  
♣K1082

♠J108 ♠KQ754  
♥A8 ♥9  
♦J952 ♦AQ74  
♣AQ96 ♣J54

♠96  
♥KQJ653  
♦863  
♣73

**23** ♠Q985  
♥7  
♦KQ954  
♣A54

♠A10 ♠KJ62  
♥KJ ♥Q8542  
♦108 ♦A32  
♣KJ109763 ♣2

♠743  
♥A10963  
♦J76  
♣Q8

**24** ♠K1042  
♥Q87  
♦95  
♣AQ84

♠65 ♠A5  
♥KJ10963 ♥A108732  
♦J64 ♦KJ1063  
♣95 ♣KJ1063

♠AQJ9873  
♥42  
♦KQ  
♣72

Board (21) Av: NS=-420

N-S	E-W	Contract	N-S	E-W	IMP
2	5	3NT E 4	430		0
3	8	3NT E 4	430		0
6	4	3NT E 4	430		0
7	1	3NT E 4	430		0
9	13	3NT W 3	400		1
10	15	3NT E 3	400		1
11	14	3NT E 3	400		1
16	12	3NT E 3	400		1

Board (22) Av: NS=-650

N-S	E-W	Contract	N-S	E-W	IMP
1	6	4S E 4	620		1
3	7	4S E 5	650		0
4	5	4S E 5	650		0
8	2	5H S-3	150		11
10	14	4S E 5	650		0
12	15	4S E 5	650		0
13	11	4S E 5	650		0
16	9	4S E 5	650		0

Board (23) Av: NS=+80

N-S	E-W	Contract	N-S	E-W	IMP
1	6	3NT E-2	200		3
3	7	3NT E-2	200		3
4	5	3NT E-3	300		6
8	2	2D S 2	90		0
10	14	3C W 3	110		-5
12	15	3C W 4	130		-5
13	11	3NT E-2	200		3
16	9	3NT E 4	630		-12

Board (24) Av: NS=+20

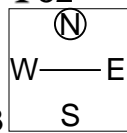
N-S	E-W	Contract	N-S	E-W	IMP
1	6	4S S 4	420		9
3	7	5S S-2	100		-3
4	5	5S S-1	50		-2
8	2	4S S-1	50		-2
10	14	5S S-2	100		-3
12	15	4S S 4	420		9
13	11	4S S-1	50		-2
16	9	4S S-1	50		-2

25

♠9652  
♥J1095  
♦KQ7  
♣52

♠KQ  
♥Q83  
♦106  
♣KQJ1083

♠A7  
♥AK64  
♦A9832  
♣A7



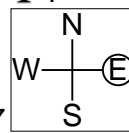
♠J10843  
♥72  
♦J54  
♣964

26

♠94  
♥10987632  
♦874  
♣4

♠863  
♥K54  
♦A53  
♣10987

♠AQJ5  
♥  
♦Q962  
♣KQJ62



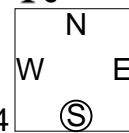
♠K1072  
♥AQJ  
♦KJ10  
♣A53

27

♠8753  
♥Q943  
♦QJ106  
♣J

♠KQJ  
♥A5  
♦754  
♣AQ1094

♠10964  
♥K2  
♦A93  
♣K875



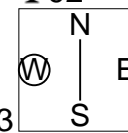
♠A2  
♥J10876  
♦K82  
♣632

28

♠KQJ98  
♥AQJ8  
♦A3  
♣92

♠2  
♥765  
♦KJ97  
♣AJ863

♠10653  
♥K1094  
♦65  
♣K107



♠A74  
♥32  
♦Q10842  
♣Q54

Board (25) Av: NS=-1060

N-S	E-W	Contract	N-S	E-W	IMP
1	6	6NT E 7	1470		-9
3	7	4NT W 7	720		8
4	5	6C W 6	1370		-7
8	2	6NT E 6	1440		-9
10	14	3NT W 7	720		8
12	15	5NT W 6	690		9
13	11	6NT W 6	1440		-9
16	9	3NT W 6	690		9

Board (26) Av: NS=+250

N-S	E-W	Contract	N-S	E-W	IMP
1	6	3H N 4	170		-2
3	7	2H N 3	140		-3
4	5	5Cx E-2	500		6
8	2	4Hx S 4	790		11
10	14	4H S 4	620		9
12	15	4H N-1	100		-8
13	11	3H N 4	170		-2
16	9	3NT S-4	400		-12

Board (27) Av: NS=-450

N-S	E-W	Contract	N-S	E-W	IMP
1	6	3NT W 5	460		0
3	7	3NT W 4	430		1
4	5	3NT W 5	460		0
8	2	3NT W 5	460		0
10	14	3NT W 3	400		2
12	15	3NT W 4	430		1
13	11	3NT W 5	460		0
16	9	3NT W 5	460		0

Board (28) Av: NS=0

N-S	E-W	Contract	N-S	E-W	IMP
1	6	4S N-2	200		-5
3	7	4S N-2	200		-5
4	5	4S N-1	100		-3
8	2	4S N-1	100		-3
10	14	4S N 4	620		12
12	15	4S N-1	100		-3
13	11	4S N-1	100		-3
16	9	4S N 4	620		12