

任天堂杯 OPEN PAIRS Session 2 Section AB 2007年12月1日(土)

1

♠ KJ82
♥ QJ64
♦ 107
♣ Q42

♠ Q73
♥ 92
♦ K852
♣ AK75

W N E S

♠ A5
♥ K1073
♦ AQJ964
♣ J

♠ 10964
♥ A85
♦ 3
♣ 109863

2

♠ 3
♥ Q6542
♦ Q32
♣ 10643

♠ 1084
♥ K873
♦ 10
♣ QJ872

W N E S

♠ QJ9765
♥ J9
♦ AJ65
♣ 9

♠ AK2
♥ A10
♦ K9874
♣ AK5

3

♠ J
♥ K76
♦ J753
♣ J9532

♠ 865
♥ A8
♦ Q1092
♣ KQ76

W N E S

♠ K10
♥ Q109543
♦ K64
♣ A10

♠ AQ97432
♥ J2
♦ A8
♣ 84

Board (1)

N-S	E-W	Contract	N-S	E-W	MP
B10	B14	7D E-2	100		16
A14	A18	6D E-1	50		12
A12	A15	6D E-1	50		12
B12	B13	6D E-1	50		12
B02	B04	6D E-1	50		12
A05	A04	6D E-1	50		12
A02	A07	6D E-1	50		12
A10	A01	6D E-1	50		12
A13	A11	5D E 5		400	7
B17	B11	5D E 5		400	7
A03	A09	3NT E 3		400	7
B07	B03	3NT W 4		430	4
A16	A17	3NT W 4		430	4
B15	B06	3NT E 4		430	4
B08	B05	3NT W 5		460	1.5
B01	B09	3NT W 5		460	1.5
A06	A08	6D E 6		920	0

Board (2)

N-S	E-W	Contract	N-S	E-W	MP
A03	A09	3NT S 4	630		16
B08	B05	4Sx E-3	500		14
B02	B04	4Sx E-3	500		14
A05	A04	4Sx E-3	500		14
B12	B13	4Sx E-1	100		12
B01	B09	3NT S-1		100	8.5
B07	B03	3NT S-1		100	8.5
B17	B11	3NT S-1		100	8.5
A12	A15	3NT S-1		100	8.5
A16	A17	3NT N-1		100	8.5
A14	A18	3H S-1		100	8.5
A10	A01	4H S-2		200	3.5
B15	B06	3NT S-2		200	3.5
A02	A07	3NT S-2		200	3.5
B10	B14	3NT S-2		200	3.5
A13	A11	4H S-3		300	1
A06	A08	6NT S-4		400	0

Board (3)

N-S	E-W	Contract	N-S	E-W	MP
A02	A07	2Sx S 3	570		16
B08	B05	3Sx S 3	530		15
B07	B03	3S S 3	140		11
A16	A17	2S S 3	140		11
B01	B09	2S S 3	140		11
B17	B11	2S S 3	140		11
B15	B06	2S S 3	140		11
B12	B13	2S S 3	140		11
A13	A11	2S S 3	140		11
A10	A01	2S S 2	110		6.5
B10	B14	2S S 2	110		6.5
A06	A08	4S S-1		50	5
A12	A15	4S S-2		100	4
A03	A09	3H E 3		140	2
A05	A04	3H E 3		140	2
B02	B04	3H E 3		140	2
A14	A18	4Sx S-2		300	0

4

♠ J
♥ AKJ76
♦ 7542
♣ QJ10

♠ 1097542
♥ 85
♦ 3
♣ K543

W N E S

♠ AKQ
♥ 32
♦ QJ8
♣ A9762

♠ 863
♥ Q1094
♦ AK1096
♣ 8

5

♠ AQJ82
♥ A1092
♦ 104
♣ Q10

♠ K64
♥ Q54
♦ Q98
♣ K432

W N E S

♠ 753
♥ KJ
♦ AKJ752
♣ AJ

♠ 109
♥ 8763
♦ 63
♣ 98765

6

♠ AQ6
♥ KQJ32
♦ 52
♣ K62

♠ 1098
♥ 1075
♦ J96
♣ A943

W N E S

♠ KJ72
♥ 9864
♦ K87
♣ Q10

♠ 543
♥ A
♦ AQ1043
♣ J875

Board (4)

N-S	E-W	Contract	N-S	E-W	MP
B02	B01	4H N 4	620		15.5
B08	B04	4H N 4	620		15.5
A14	A12	5Sx W-2	500		13.5
A13	A16	5Cx E-2	500		13.5
B16	B07	4Sx W-1	200		12
B09	B06	3H N 4	170		11
B13	B14	4S W-1	100		9.5
B11	B15	4S W-1	100		9.5
A06	A05	5H N-1		100	6.5
A07	A09	5H N-1		100	6.5
B03	B05	5H N-1		100	6.5
A15	A10	5H N-1		100	6.5
A11	A02	3S W 3		140	3.5
A04	A01	2S E 3		140	3.5
A17	A18	6H N-2		200	1.5
A03	A08	5Hx N-1		200	1.5
B10	B17	4Sx W 4		790	0

Board (5)

N-S	E-W	Contract	N-S	E-W	MP
A15	A10	3D E 3		110	15.5
B09	B06	3D E 3		110	15.5
A13	A16	3NT W 3		400	11
A14	A12	3NT W 3		400	11
B02	B01	3NT W 3		400	11
B13	B14	3NT W 3		400	11
A07	A09	3NT W 3		400	11
B11	B15	3NT W 3		400	11
A04	A01	3NT E 3		400	11
A11	A02	3NT W 4		430	5.5
A06	A05	3NT W 4		430	5.5
A17	A18	3NT W 4		430	5.5
B03	B05	3NT W 4		430	5.5
B10	B17	3NT W 5		460	1.5
A03	A08	3NT W 5		460	1.5
B08	B04	3NT W 5		460	1.5
B16	B07	3NT E 5		460	1.5

Board (6)

N-S	E-W	Contract	N-S	E-W	MP
B02	B01	3NT N 5	460		15
A07	A09	3NT N 5	460		15
B16	B07	3NT N 5	460		15
A17	A18	3NT N 4	430		11
B08	B04	3NT N 4	430		11
B03	B05	3NT N 4	430		11
A14	A12	3NT N 4	430		11
A06	A05	3NT N 4	430		11
A04	A01	3NT S 3	400		7.5
A13	A16	3NT N 3	400		7.5
A11	A02	1NT S 3	150		6
A15	A10	3C N 4	130		5
A03	A08	2NT S 2	120		3.5
B13	B14	1NT S 2	120		3.5
B10	B17	2NT N-1		50	2
B11	B15	3NT S-2		100	0.5
B09	B06	3NT N-2		100	0.5

任天堂杯 OPEN PAIRS Session 2 Section AB 2007年12月1日(土)

7

♠ J5
♥ 86
♦ Q1092
♣ QJ964

♠ A1098
♥ A953
♦ J63
♣ 82

♠ K6
♥ QJ1072
♦ A84
♣ A105

♠ Q7432
♥ K4
♦ K75
♣ K73

N
W — E
S

8

♠ AQJ3
♥ J102
♦ AK9
♣ 732

♠ K64
♥ A65
♦ Q102
♣ Q1095

♠ 10852
♥ K874
♦ 7653
♣ K

♠ 97
♥ Q93
♦ J84
♣ AJ864

N
W — E
S

9

♠ 32
♥ 52
♦ KQJ653
♣ Q109

♠ KQ1094
♥ J1096
♦ 9
♣ K87

♠ J865
♥ K7
♦ A1087
♣ J63

♠ A7
♥ AQ843
♦ 42
♣ A542

N
W — E
S

Board (7)

N-S	E-W	Contract	N-S	E-W	MP
A14	A17	3D E-2	200		16
B17	B08	4H W-1	100		15
A12	A03	3H W 3		140	13
A15	A13	3H W 3		140	13
A04	A09	2H W 3		140	13
A08	A01	3H W 4		170	10
A18	A10	2H W 4		170	10
B12	B16	2H W 4		170	10
B09	B05	4H W 4		620	4
B10	B13	4H W 4		620	4
A07	A06	4H W 4		620	4
B14	B15	4H W 4		620	4
A16	A11	4H W 4		620	4
A05	A02	4H W 4		620	4
B01	B07	4H W 4		620	4
B04	B06	4H W 4		620	4
B03	B02	4H W 4		620	4

Board (8)

N-S	E-W	Contract	N-S	E-W	MP
B12	B16	2NT S 3	150		16
B10	B13	2NT N 2	120		13
A14	A17	2NT N 2	120		13
A04	A09	2NT N 2	120		13
A07	A06	2NT N 2	120		13
A16	A11	1NT N 2	120		13
A12	A03	3NT N-1		50	6.5
B04	B06	2NT N-1		50	6.5
B09	B05	2NT N-1		50	6.5
A18	A10	2NT N-1		50	6.5
A08	A01	2NT N-1		50	6.5
A05	A02	2NT N-1		50	6.5
B17	B08	1NT S-1		50	6.5
B03	B02	1NT S-1		50	6.5
B01	B07	2NT N-2	100		1.5
B14	B15	2NT N-2	100		1.5
A15	A13	2NT N-3	150		0

Board (9)

N-S	E-W	Contract	N-S	E-W	MP
B12	B16	3D N 4	130		16
A15	A13	3D N 3	110		12.5
A05	A02	3D N 3	110		12.5
A12	A03	2D N 3	110		12.5
A07	A06	2D N 3	110		12.5
A04	A09	2D N 3	110		12.5
A08	A01	2D N 3	110		12.5
B01	B07	2D N 2	90		8
B09	B05	2D N 2	90		8
B10	B13	2D N 2	90		8
B17	B08	3D N-1		50	5
A18	A10	3D N-1		50	5
A16	A11	3D N-1		50	5
B14	B15	4D N-2	100		2.5
B04	B06	3D N-2	100		2.5
A14	A17	2S E 3	140		1
B03	B02	3NT S-4	200		0

10

♠ AK1098
♥ 10876
♦ Q5
♣ 83

♠ Q
♥ 543
♦ K8762
♣ KQ105

♠ 654
♥ AKQ2
♦ A1093
♣ 72

♠ J732
♥ J9
♦ J4
♣ AJ964

N
W — E
S

11

♠ KJ872
♥ K643
♦ A6
♣ K8

♠ A5
♥ A1075
♦ Q10532
♣ AQ

♠ Q63
♥ QJ9
♦ K98
♣ 9762

♠ 1094
♥ 82
♦ J74
♣ J10543

N
W — E
S

12

♠ J84
♥ A962
♦ 94
♣ QJ84

♠ AQ10953
♥ K43
♦ A102
♣ 10

♠ 6
♥ J75
♦ KQ873
♣ K973

♠ K72
♥ Q108
♦ J65
♣ A652

N
W — E
S

Board (10)

N-S	E-W	Contract	N-S	E-W	MP
A17	A12	3NT W-3	300		16
B01	B06	1NT W 1		90	15
A10	A11	3S N-1	100		13.5
B12	B10	3S N-1	100		13.5
A16	A14	4D E 5	150		9
A05	A01	4D E 5	150		9
B04	B03	3D E 5	150		9
B02	B08	3D E 5	150		9
A08	A07	3D E 5	150		9
B13	B17	3D E 5	150		9
B05	B07	3D E 5	150		9
A13	A04	1NT W 4	180		5
B15	B16	3Sx S-1	200		3
B11	B14	3Sx N-1	200		3
A15	A18	3S N-2	200		3
A06	A03	5D E 5	600		1
A09	A02	4H E 4	620		0

Board (11)

N-S	E-W	Contract	N-S	E-W	MP
A10	A11	3NT W-3	150		16
B11	B14	2S N 2	110		15
B02	B08	3NT W-2	100		14
B01	B06	3D W-1	50		12.5
B04	B03	2NT W-1	50		12.5
A15	A18	3S S-1		50	10.5
A09	A02	2S S-1		50	10.5
B12	B10	3S S-2	100		9
B05	B07	2NT W 2	120		6.5
A08	A07	2NT W 2	120		6.5
A06	A03	1NT W 2	120		6.5
A13	A04	1NT W 2	120		6.5
A05	A01	2H W 3	140		4
A17	A12	2S S-3	150		3
A16	A14	3NT E 3	400		2
B13	B17	3NT E 4	430		1
B15	B16	3Sx S-3	500		0

Board (12)

N-S	E-W	Contract	N-S	E-W	MP
B12	B10	2S W-1	50		16
B11	B14	2S W 2		110	14.5
A06	A03	2S W 2		110	14.5
A15	A18	2S W 3		140	11.5
A17	A12	2S W 3		140	11.5
B15	B16	2S W 3		140	11.5
A05	A01	2S W 3		140	11.5
B05	B07	2S W 4		170	5.5
B04	B03	2S W 4		170	5.5
A13	A04	2S W 4		170	5.5
A09	A02	2S W 4		170	5.5
A16	A14	2S W 4		170	5.5
B01	B06	2S W 4		170	5.5
B02	B08	2S W 4		170	5.5
B13	B17	2S E 4		170	5.5
A10	A11	2S W 5	200		0.5
A08	A07	2S W 5	200		0.5

任天堂杯 OPEN PAIRS Session 2 Section AB 2007年12月1日(土)

13

♠ KJ5
♥ AK94
♦ A952
♣ 76

♠ AQ109863
♥ Q7
♦ K1064
♣

♠ 74
♥ 108652
♦ J8
♣ Q854

♠ 2
♥ J3
♦ Q73
♣ AKJ10932

14

♠ KJ5
♥ 6
♦ K8654
♣ K1082

♠ 10872
♥ Q109
♦ Q93
♣ J65

♠ Q9643
♥ AK542
♦ 72
♣ A

♠ A
♥ J873
♦ AJ10
♣ Q9743

15

♠ J97
♥ 1098
♦ A863
♣ 1093

♠ AK53
♥ AJ6
♦ Q9
♣ A864

♠ 84
♥ KQ532
♦ KJ75
♣ QJ

♠ Q1062
♥ 74
♦ 1042
♣ K752

Board (13)

N-S	E-W	Contract	N-S	E-W	MP
A09	A08	3NT N 6	690		15
A17	A15	3NT N 6	690		15
A01	A03	3NT N 6	690		15
B10	B01	3NT N 5	660		12.5
B03	B09	3NT N 5	660		12.5
B13	B11	5C S 5	600		11
B02	B07	6C S-1		100	6.5
A18	A13	6C S-1		100	6.5
A11	A12	6C N-1		100	6.5
B05	B04	5C S-1		100	6.5
B12	B15	5C S-1		100	6.5
B06	B08	5C S-1		100	6.5
A16	A10	5C N-1		100	6.5
A06	A02	3NT N-1		100	6.5
B16	B17	6C S-2		200	1.5
A14	A05	6C S-2		200	1.5
A07	A04	6NT N-4		400	0

Board (14)

N-S	E-W	Contract	N-S	E-W	MP
B02	B07	3Dx N 5	670		16
A07	A04	5D N 5	400		15
B05	B04	4Sx E-2	300		13.5
B12	B15	4Sx E-2	300		13.5
B16	B17	4C N 5	150		12
B13	B11	3D N 3	110		11
A17	A15	4Sx E-1	100		9
A16	A10	4Sx E-1	100		9
A06	A02	4S E-2	100		9
A01	A03	4S E-1	50		5.5
B06	B08	3S E-1	50		5.5
B10	B01	3S E-1	50		5.5
B03	B09	3S E-1	50		5.5
A09	A08	5D N-1		50	3
A11	A12	5Dx N-1		100	2
A14	A05	2S E 2		110	1
A18	A13	3S E 3		140	0

Board (15)

N-S	E-W	Contract	N-S	E-W	MP
A17	A15	6H E-1	50		16
B10	B01	4H E 5		450	14.5
B13	B11	4H E 5		450	14.5
A11	A12	3NT W 5		460	13
B02	B07	4H W 6		480	8.5
B16	B17	4H E 6		480	8.5
B12	B15	4H E 6		480	8.5
B05	B04	4H E 6		480	8.5
A14	A05	4H E 6		480	8.5
A07	A04	4H E 6		480	8.5
A06	A02	4H E 6		480	8.5
A16	A10	4H E 6		480	8.5
B06	B08	3NT W 6		490	4
A01	A03	6H E 6		980	1.5
A18	A13	6H E 6		980	1.5
B03	B09	6H E 6		980	1.5
A09	A08	6H E 6		980	1.5

16

♠ AKQ53
♥ 9832
♦ A9
♣ K2

♠ 964
♥ QJ76
♦ K83
♣ QJ3

♠ 107
♥ K4
♦ Q107654
♣ 865

♠ J82
♥ A105
♦ J2
♣ A10974

17

♠ 97543
♥ K632
♦ K
♣ A103

♠ AQ8
♥ QJ1074
♦ AJ7
♣ KQ

♠ K102
♥ A98
♦ Q83
♣ 9854

♠ J6
♥ 5
♦ 1096542
♣ J762

18

♠ 9542
♥ A52
♦ K
♣ AJ1062

♠ AJ73
♥ Q873
♦ 762
♣ 84

♠ K10
♥ J10964
♦ AJ943
♣ 9

♠ Q86
♥ K
♦ Q1085
♣ KQ753

Board (16)

N-S	E-W	Contract	N-S	E-W	MP
B11	B02	4S N 5	450		10
B03	B08	4S N 5	450		10
A17	A11	4S N 5	450		10
B15	B10	4S N 5	450		10
B14	B12	4S N 5	450		10
B13	B16	4S N 5	450		10
A15	A06	4S N 5	450		10
A07	A03	4S N 5	450		10
A08	A05	4S N 5	450		10
A01	A09	4S N 5	450		10
A02	A04	4S N 5	450		10
A10	A14	4S N 5	450		10
A12	A13	4S N 5	450		10
B07	B09	3NT S 4	430		3
A18	A16	4S N 4	420		2
B06	B05	3NT N 3	400		0.5
B04	B01	3NT N 3	400		0.5

Board (17)

N-S	E-W	Contract	N-S	E-W	MP
B07	B09	4H W 4		420	11
B04	B01	4H W 4		420	11
A18	A16	4H W 4		420	11
B15	B10	4H W 4		420	11
B14	B12	4H W 4		420	11
B13	B16	4H W 4		420	11
A15	A06	4H W 4		420	11
A07	A03	4H W 4		420	11
A02	A04	4H W 4		420	11
A01	A09	4H W 4		420	11
A12	A13	4H W 4		420	11
A17	A11	3NT W 4		430	5
B03	B08	4H W 5		450	2.5
A10	A14	4H W 5		450	2.5
A08	A05	4H W 5		450	2.5
B11	B02	4H W 5		450	2.5
B06	B05	3NT W 5		460	0

Board (18)

N-S	E-W	Contract	N-S	E-W	MP
A18	A16	5Hx E-3	500		16
B13	B16	5Hx E-2	300		14.5
A08	A05	4Hx E-2	300		14.5
B15	B10	3C S 4	130		13
B06	B05	2NT S 2	120		12
A15	A06	3Hx W-1	100		11
B04	B01	3H E-1	50		10
A07	A03	5C S-1		100	6.5
A02	A04	5C N-1		100	6.5
A10	A14	5C N-1		100	6.5
B07	B09	3NT S-1		100	6.5
A12	A13	3NT S-1		100	6.5
B14	B12	3NT N-1		100	6.5
A01	A09	5C S-2		200	1.5
B03	B08	4S N-2		200	1.5
B11	B02	3S N-2		200	1.5
A17	A11	3NT N-2		200	1.5

任天堂杯 OPEN PAIRS Session 2 Section AB 2007年12月1日(土)

19

♠ AKQ
♥ K762
♦ 109653
♣ J

♠ 9643
♥ 1053
♦ 42
♣ AK54

N
W — E
S

♠ J5
♥ AJ
♦ QJ87
♣ Q10732

♠ 10872
♥ Q984
♦ AK
♣ 986

20

♠ AK2
♥ J97
♦ KJ963
♣ 74

♠ 85
♥ 104
♦ 1072
♣ AKQ953

N
W — E
S

♠ J1064
♥ AQ65
♦ A5
♣ 1082

♠ Q973
♥ K832
♦ Q84
♣ J6

21

♠ 6
♥ QJ5
♦ A9853
♣ K873

♠ J8543
♥ K9763
♦ KJ
♣ 6

N
W — E
S

♠ AKQ102
♥ 842
♦ 764
♣ Q9

♠ 97
♥ A10
♦ Q102
♣ AJ10542

Board (19)

N-S	E-W	Contract	N-S	E-W	MP
A02	A01	4H N 6	480		16
A16	A07	4H S 4	420		14
A18	A12	4H S 4	420		14
A08	A04	4H S 4	420		14
A03	A05	3Cx E-1	200		12
B12	B03	2H S 4	170		8
B14	B17	2H S 4	170		8
B05	B02	2H S 4	170		8
B04	B09	2H S 4	170		8
A10	A17	2H S 4	170		8
A11	A15	2H S 4	170		8
A09	A06	2H S 4	170		8
B08	B01	2H S 3	140		3
A13	A14	2H S 3	140		3
B07	B06	2H S 3	140		3
B16	B11	2H S 2	110		0.5
B15	B13	2H S 2	110		0.5

Board (20)

N-S	E-W	Contract	N-S	E-W	MP
B07	B06	2D N 3	110		15.5
B16	B11	2D N 3	110		15.5
B08	B01	4C W-1	100		14
A03	A05	2D N 2	90		13
B12	B03	3D N-1	100		11
A02	A01	2H S-1	100		11
A11	A15	2H S-1	100		11
B05	B02	3C W 3	110		7
A09	A06	3C W 3	110		7
B14	B17	3C W 3	110		7
A16	A07	3C W 3	110		7
A13	A14	2C W 3	110		7
A08	A04	3C W 4	130		3.5
A18	A12	3C W 4	130		3.5
B04	B09	1NT N-2	200		1.5
B15	B13	1NT N-2	200		1.5
A10	A17	3NT E 3	600		0

Board (21)

N-S	E-W	Contract	N-S	E-W	MP
A08	A04	5C S 5	600		15.5
B07	B06	5C S 5	600		15.5
B14	B17	5Sx E-2	300		13.5
B05	B02	4Sx E-2	300		13.5
B04	B09	3C S 6	170		12
B08	B01	4C S 5	150		11
A13	A14	5S E-2	100		10
B16	B11	4S E-1	50		7
A09	A06	4S E-1	50		7
A03	A05	4S E-1	50		7
A16	A07	4S E-1	50		7
A11	A15	4H E-1	50		7
A18	A12	Passout			4
B12	B03	5C S-1	100		3
A02	A01	3S E 3	140		2
A10	A17	5Cx S-1	200		0.5
B15	B13	5Cx S-1	200		0.5

22

♠ AJ5
♥ A432
♦ J52
♣ A53

♠ 9843
♥ 107
♦ AKQ109
♣ Q4

N
W — E
S

♠ 1076
♥ K5
♦ 864
♣ J9876

♠ KQ2
♥ QJ986
♦ 73
♣ K102

23

♠ A643
♥ J4
♦ 1098764
♣ 3

♠ 102
♥ AQ10862
♦ Q2
♣ K82

N
W — E
S

♠ Q87
♥ K97
♦ AKJ5
♣ QJ4

♠ KJ95
♥ 53
♦ 3
♣ A109765

24

♠ K10862
♥ QJ97
♦ J6
♣ K3

♠ J54
♥ A2
♦ 10832
♣ Q982

N
W — E
S

♠ Q93
♥ K864
♦ A754
♣ 106

♠ A7
♥ 1053
♦ KQ9
♣ AJ754

Board (22)

N-S	E-W	Contract	N-S	E-W	MP
A09	A05	2H S 3	140		14
A17	A08	2H S 3	140		14
B06	B03	2H S 3	140		14
B13	B04	2H S 3	140		14
A11	A18	1H S 3	140		14
B16	B14	4H S-1	50		5.5
B17	B12	4H S-1	50		5.5
B08	B07	4H S-1	50		5.5
B10	B11	4H S-1	50		5.5
B09	B02	4H S-1	50		5.5
A04	A06	4H S-1	50		5.5
A03	A02	4H S-1	50		5.5
A01	A07	4H S-1	50		5.5
A10	A13	4H S-1	50		5.5
B05	B01	4H S-1	50		5.5
A14	A15	4H S-1	50		5.5
A12	A16	4H S-1	50		5.5

Board (23)

N-S	E-W	Contract	N-S	E-W	MP
A17	A08	4H W-2	200		12.5
A12	A16	4H W-2	200		12.5
B10	B11	4H W-2	200		12.5
B17	B12	4H W-2	200		12.5
B13	B04	4H W-2	200		12.5
A11	A18	4H W-2	200		12.5
A04	A06	4H W-2	200		12.5
A10	A13	4H W-2	200		12.5
A09	A05	4H W-1	100		7.5
A14	A15	4H W-1	100		7.5
B05	B01	3D N-2	200		6
B16	B14	4H W 4	620		4.5
B09	B02	4H W 4	620		4.5
A01	A07	3NT E 5	660		3
B08	B07	4H W 6	680		1
B06	B03	4H W 6	680		1
A03	A02	4H E 6	680		1

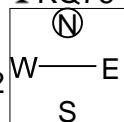
Board (24)

N-S	E-W	Contract	N-S	E-W	MP
B05	B01	2NT S 3	150		15.5
A03	A02	2NT S 3	150		15.5
A14	A15	2S N 3	140		12
A12	A16	2S N 3	140		12
B17	B12	2S N 3	140		12
A17	A08	2S N 3	140		12
B13	B04	2H N 3	140		12
B08	B07	2NT S 2	120		8
B10	B11	2NT S 2	120		8
B16	B14	2NT S 2	120		8
A09	A05	2S N 2	110		5.5
A11	A18	2S N 2	110		5.5
B09	B02	3NT N-1	50		3.5
B06	B03	2S N-1	50		3.5
A01	A07	3NT S-2	100		1
A04	A06	3NT S-2	100		1
A10	A13	2NT S-2	100		1

25

♠ KJ765
♥ J5
♦ J5
♣ KQ76

♠ 9842
♥ 106
♦ K10432
♣ J10



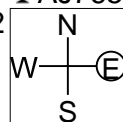
♠ Q10
♥ AQ942
♦ A987
♣ 84

♠ A3
♥ K873
♦ Q6
♣ A9532

26

♠ A6
♥ 943
♦ 103
♣ AJ7653

♠ Q5432
♥ J87
♦ K96
♣ 82



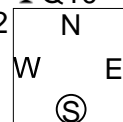
♠ K10987
♥ K5
♦ 54
♣ KQ104

♠ J
♥ AQ1062
♦ AQJ872
♣ 9

27

♠ KJ9
♥ J84
♦ A10853
♣ Q10

♠ A8732
♥ Q
♦ K764
♣ J42



♠ 10654
♥ K753
♦ J2
♣ A75

♠ Q
♥ A10962
♦ Q9
♣ K9863

Board (25)

N-S	E-W	Contract	N-S	E-W	MP
A02	A08	3NT S 3	400		15.5
A13	A17	3NT N 3	400		15.5
B07	B04	2H E-3	300		14
A04	A03	1S N 5	200		13
B16	B10	2C N 5	150		12
B17	B15	3S N 3	140		10
A15	A16	2S N 3	140		10
A18	A09	1S N 3	140		10
A11	A14	1NT S 2	120		8
A01	A06	3C S 3	110		7
A12	A10	2D E-1	100		6
B14	B05	1NT S 1	90		4
B06	B02	1NT S 1	90		4
B09	B08	1NT S 1	90		4
B01	B03	5C S-1		50	1
A05	A07	5C S-1		50	1
B11	B12	4S N-1		50	1

Board (26)

N-S	E-W	Contract	N-S	E-W	MP
B16	B10	4Sx E-3	800		16
A18	A09	5H S 6	680		15
A01	A06	5H S 5	650		11.5
A12	A10	5H N 5	650		11.5
B01	B03	4H S 5	650		11.5
A15	A16	4H S 5	650		11.5
B06	B02	4H S 5	650		11.5
B11	B12	4H N 5	650		11.5
B17	B15	4H N 4	620		8
B07	B04	3NT N 3	600		7
A04	A03	4Sx E-2	500		5.5
A05	A07	4Sx E-2	500		5.5
A02	A08	4Sx E-1	200		3
B09	B08	4S E-2	200		3
A11	A14	4S E-2	200		3
A13	A17	2S E 2		110	1
B14	B05	5Hx N-1		200	0

Board (27)

N-S	E-W	Contract	N-S	E-W	MP
B14	B05	3Sx W-3	500		16
A18	A09	4H S 4	420		14.5
B17	B15	4H S 4	420		14.5
B01	B03	3Sx W-2	300		13
A11	A14	3H S 4	170		12
A15	A16	3H S 3	140		10
B09	B08	3H S 3	140		10
A05	A07	3H S 3	140		10
A04	A03	2NT N 2	120		8
A02	A08	1H S 2	110		7
B11	B12	3S E-1	50		6
B16	B10	Passout			4
A12	A10	Passout			4
B06	B02	Passout			4
B07	B04	4H S-1		50	2
A01	A06	4H S-2		100	0.5
A13	A17	4H S-2		100	0.5