

木村六郎杯 フライトB Section B 2007年3月10日(土)

1

♠ 3
♥ 8
♦ AQJ8432
♣ 10954

♠ 10865
♥ AK10653
♦ 10
♣ 32

♠ AKQJ742
♥ 4
♦ 7
♣ AQJ8

♠ 9
♥ QJ972
♦ K965
♣ K76

W N E S

Board (1) Av. = -330

N-S	E-W	Contract	N-S	E-W	IMP
1	10	4S E 5		450	-3
10	1	5S E 5		450	-3
2	8	4S E 5		450	-3
8	2	6S E-1	50		9
3	5	5S E 5		450	-3
5	3	6S E 6		980	-12
4	7	6S E-1	50		9
7	4	6S E-1	50		9
6	9	4S E 5		450	-3
9	6	4S E 5		450	-3

2

♠ J95
♥ KJ853
♦ 64
♣ AQ2

♠ 1064
♥ 10
♦ A10953
♣ J764

♠ Q
♥ AQ9762
♦ J2
♣ 10853

♠ AK8732
♥ 4
♦ KQ87
♣ K9

W N E S

Board (2) Av. = 630

N-S	E-W	Contract	N-S	E-W	IMP
1	10	3NT N 4		630	0
10	1	3NT N 4		630	0
2	8	4S S 5		650	1
8	2	4S S 5		650	1
3	5	4S S 4		620	0
5	3	4S S 4		620	0
4	7	4S S 4		620	0
7	4	4S S 4		620	0
6	9	3NT N 3		600	-1
9	6	3NT N 4		630	0

3

♠ Q2
♥ Q32
♦ AJ987
♣ J86

♠ K98
♥ J104
♦ Q103
♣ KQ107

♠ J104
♥ AK9865
♦ AK943

♠ A7653
♥ 7
♦ K6542
♣ 52

W N E S

Board (3) Av. = -360

N-S	E-W	Contract	N-S	E-W	IMP
1	10	3H E 4		170	5
10	1	3H E 4		170	5
2	8	5D N-2		100	6
8	2	4H E 4		620	-6
3	5	4H E 5		650	-7
5	3	5Dx N-2		300	2
4	7	3H E 5		200	4
7	4	4H E 5		650	-7
6	9	4H E 4		620	-6
9	6	2H E 4		170	5

4

♠ KJ10653
♥ Q7
♦ K1082
♣ K

♠ 842
♥ 10985
♦ A96
♣ AJ2

♠ Q9
♥ KJ632
♦ Q754
♣ Q9

♠ A7
♥ A4
♦ J3
♣ 10876543

W N E S

Board (4) Av. = 150

N-S	E-W	Contract	N-S	E-W	IMP
1	10	2S N 3		140	0
10	1	2NT S-3		300	-10
2	8	3NT S-5		500	-12
8	2	4S N 4		620	10
3	5	4Hx E-3		800	12
5	3	2S N 2		110	-1
4	7	3S N 3		140	0
7	4	2S N 5		200	2
6	9	2S N 3		140	0
9	6	2S N 3		140	0

5

♠ AQ10
♥ 6
♦ J1094
♣ AQJ105

♠ 72
♥ AK874
♦ KQ86
♣ K2

♠ K943
♥ Q109
♦ 52
♣ 9876

♠ J865
♥ J532
♦ A73
♣ 43

W N E S

Board (5) Av. = 50

N-S	E-W	Contract	N-S	E-W	IMP
1	10	1NT N 3		150	3
10	1	1NT N 1		90	1
2	8	2D N-1		100	-4
8	2	1NT N 2		120	2
3	5	2H W 2		110	-4
5	3	1NT N 1		90	1
4	7	1NT N 1		90	1
7	4	1NT N 2		120	2
6	9	1NT N 2		120	2
9	6	1NT N-1		100	-4

6

♠ 9764
♥ 82
♦ AK102
♣ 1085

♠ AQ9543
♥ 987
♦ KQ92

♠ AKJ1085
♥ J107
♦ 63
♣ 43

♠ Q32
♥ K6
♦ QJ54
♣ AJ76

W N E S

Board (6) Av. = -440

N-S	E-W	Contract	N-S	E-W	IMP
1	10	2S E 3		140	7
10	1	4H W 4		620	-5
2	8	4Hx W 4		790	-8
8	2	4H W 4		620	-5
3	5	4H W 4		620	-5
5	3	2S W 2		110	8
4	7	4H W 4		620	-5
7	4	3H W 4		170	7
6	9	2S E 2		110	8
9	6	4H W 4		620	-5

7

♠ KQ6543
♥ 6
♦ AJ10
♣ Q42

♠ A7
♥ A9873
♦ Q5
♣ J1096

♠ 9
♥ KQ105
♦ 98732
♣ 853

♠ J1082
♥ J42
♦ K64
♣ AK7

W N E S

Board (7) Av. = 650

N-S	E-W	Contract	N-S	E-W	IMP
1	10	4S N 5		650	0
10	1	4S N 4		620	-1
2	8	4S N 5		650	0
8	2	4S N 5		650	0
3	5	4S N 5		650	0
5	3	4S N 5		650	0
4	7	4S N 5		650	0
7	4	4S N 5		650	0
6	9	4S N 5		650	0
9	6	6S S-1		100	-13

8

♠ KJ6542
♥ Q6
♦ 52
♣ 765

♠ AQ109
♥ J108
♦ 9
♣ QJ842

♠ K9752
♥ AKQ83
♣ AK3

♠ 873
♥ A43
♦ J10764
♣ 109

W N E S

Board (8) Av. = -510

N-S	E-W	Contract	N-S	E-W	IMP
1	10	3H E 6		230	7
10	1	4NT W 6		490	1
2	8	3Sx N-3		500	0
8	2	5H E 6		480	1
3	5	6H W 6		980	-10
5	3	5C W 5		400	3
4	7	2Sx N-2		300	5
7	4	6H E 6		980	-10
6	9	4H W 6		480	1
9	6	4H E 5		450	2

木村六郎杯 フライトB Section B 2007年3月10日(土)

9

♠K3
♥9763
♦AKQ95
♣73

♠AQJ6
♥AQ8
♦876
♣KJ8

♠874
♥KJ
♦432
♣AQ1095

♠10952
♥10542
♦J10
♣642

(N) (E) (S)

Board (9) Av. = -30

N-S	E-W	Contract	N-S	E-W	IMP
1	10	2H S-1		50	-1
10	1	3NT W-1	100		4
2	8	2C E 4		130	-3
8	2	4C E-1	100		4
3	5	5C E-2	200		6
5	3	3NT W-1	100		4
4	7	3C E 4		130	-3
7	4	2C E 3		110	-2
6	9	2C E 3		110	-2
9	6	2C E 3		110	-2

10

♠J654
♥752
♦1085
♣Q62

♠9732
♥KJ8
♦Q43
♣AK4

♠Q10
♥A94
♦AK
♣J109875

♠AK8
♥Q1063
♦J9762
♣3

(N) (E) (S)

Board (10) Av. = -650

N-S	E-W	Contract	N-S	E-W	IMP
1	10	3NT E 5		660	0
10	1	3NT E 4		630	1
2	8	3NT E 5		660	0
8	2	3NT E 5		660	0
3	5	2C W 4		130	11
5	3	3NT W 5		660	0
4	7	3NT E 5		660	0
7	4	3NT E 5		660	0
6	9	3NT W 4		630	1
9	6	3NT W 5		660	0

11

♠AJ10
♥A10874
♦AK106
♣6

♠K53
♥J5
♦J85432
♣Q5

♠9642
♥K96
♦Q7
♣J983

♠Q87
♥Q32
♦9
♣AK10742

(N) (E) (S)

Board (11) Av. = 480

N-S	E-W	Contract	N-S	E-W	IMP
1	10	5H N 6		480	0
10	1	3NT N 4		430	-2
2	8	4H N 6		480	0
8	2	4H N 6		480	0
3	5	5H N 6		480	0
5	3	6H N 6		980	11
4	7	4H N 6		480	0
7	4	4H N 6		480	0
6	9	5H N 6		480	0
9	6	5H N 5		450	-1

12

♠K2
♥J85432
♦1073
♣95

♠AJ9854
♥106
♦9
♣Q1082

♠Q3
♥AK
♦AK865
♣AK43

♠1076
♥Q97
♦QJ42
♣J76

(N) (E) (S)

Board (12) Av. = -790

N-S	E-W	Contract	N-S	E-W	IMP
1	10	6S W 6		980	-5
10	1	5S E 6		480	7
2	8	4S W 6		480	7
8	2	6S W 6		980	-5
3	5	4S W 6		480	7
5	3	4S W 6		480	7
4	7	6S E 6		980	-5
7	4	6S E 6		980	-5
6	9	6NT E 6		990	-5
9	6	6S W 6		980	-5

13

♠AQ103
♥104
♦AQ8754
♣J

♠9654
♥AQJ963
♦J10
♣9

♠K872
♥82
♦92
♣AQ832

♠J
♥K75
♦K63
♣K107654

(N) (E) (S)

Board (13) Av. = 20

N-S	E-W	Contract	N-S	E-W	IMP
1	9	2NT S 3		150	4
9	1	3NT S-3		300	-8
2	7	4D N-1		100	-3
7	2	3D N 3		110	3
3	8	3D N 3		110	3
8	3	2H W-1		100	2
4	6	3NT S 3		600	11
6	4	3NT S-3		300	-8
5	10	1NT S 4		180	4
10	5	3D N-1		100	-3

14

♠K84
♥J3
♦AQJ432
♣A9

♠A6
♥K86
♦98
♣K107542

♠J10932
♥AQ742
♦
♣J86

♠Q75
♥1095
♦K10765
♣Q3

(N) (E) (S)

Board (14) Av. = -150

N-S	E-W	Contract	N-S	E-W	IMP
1	9	4D N-1		50	3
9	1	4C W 5		150	0
2	7	2H W 5		200	-2
7	2	4H E 5		450	-7
3	8	3S E-2		100	6
8	3	4D N-1		50	3
4	6	3H W 4		170	-1
6	4	3H E 5		200	-2
5	10	4D N-2		100	2
10	5	4Dx N-2		300	-4

15

♠AQ
♥J1042
♦9865
♣A42

♠J93
♥AKQ
♦KJ10
♣10986

♠K874
♥973
♦A7432
♣3

♠10652
♥865
♦Q
♣KQJ75

(N) (E) (S)

Board (15) Av. = -130

N-S	E-W	Contract	N-S	E-W	IMP
1	9	1NT W 3		150	-1
9	1	1NT W 2		120	0
2	7	1NT W 1		90	1
7	2	2D W 4		130	0
3	8	1NT W 1		90	1
8	3	1NT W 3		150	-1
4	6	1NT W 2		120	0
6	4	1NT W 2		120	0
5	10	1NT W 4		180	-2
10	5	1NT W 4		180	-2

16

♠3
♥KQJ
♦A1072
♣109532

♠AJ872
♥10753
♦93
♣KJ

♠KQ106
♥8
♦Q8654
♣Q64

♠954
♥A9642
♦KJ
♣A87

(N) (E) (S)

Board (16) Av. = -30

N-S	E-W	Contract	N-S	E-W	IMP
1	9	4H S-1		50	-1
9	1	3S W 4		170	-4
2	7	2H S 2		110	4
7	2	3H S-1		50	-1
3	8	2H S 2		110	4
8	3	4H S-1		50	-1
4	6	5H S-4		200	-5
6	4	3H S-1		50	-1
5	10	3H S 4		170	5
10	5	3H S-1		50	-1

木村六郎杯 フライトB Section B 2007年3月10日(土)

17

♠ J6
♥ KQJ6
♦ A1042
♣ J53

♠ AQ4
♥ 843
♦ K83
♣ 9876

♠ 10753
♥ 10972
♦ QJ97
♣ 2

♠ K982
♥ A5
♦ 65
♣ AKQ104

W N E S

Board (17) Av. = 410

N-S	E-W	Contract	N-S	E-W	IMP
1	9	3C	S 5	150	-6
9	1	3NT	N 5	460	2
2	7	3NT	S 4	430	1
7	2	6NT	N-1	50	-10
3	8	3NT	N 4	430	1
8	3	3NT	N 5	460	2
4	6	3NT	N 5	460	2
6	4	3NT	N 4	430	1
5	10	3NT	S 4	430	1
10	5	3NT	S 5	460	2

18

♠ 1073
♥ AK4
♦ AJ96532
♣ AJ96532

♠ J87643
♥ 98
♦ Q10
♣ Q84

♠ Q1095
♥ KJ65
♦ J652
♣ 7

♠ AK2
♥ AQ42
♦ 9873
♣ K10

W N E S

Board (18) Av. = 680

N-S	E-W	Contract	N-S	E-W	IMP
1	9	6C	N 7	1390	12
9	1	3C	N 6	170	-11
2	7	7NT	S-1	100	-13
7	2	5C	N 6	620	-2
3	8	6C	S-1	100	-13
8	3	3NT	S 6	690	0
4	6	6C	N 6	1370	12
6	4	3NT	S 6	690	0
5	10	6C	S 7	1390	12
10	5	5C	N 5	600	-2

19

♠ 754
♥ 10754
♦ K9
♣ A432

♠ KQ83
♥ AQ6
♦ Q432
♣ J10

♠ A1092
♥ J982
♦ AJ85
♣ K

♠ J6
♥ K3
♦ 1076
♣ Q98765

W N E S

Board (19) Av. = -650

N-S	E-W	Contract	N-S	E-W	IMP
1	9	4S	W 4	620	1
9	1	4S	E 6	680	-1
2	7	4S	W 5	650	0
7	2	4S	W 5	650	0
3	8	4S	W 5	650	0
8	3	4S	W 6	680	-1
4	6	4S	E 5	650	0
6	4	4S	W 5	650	0
5	10	4S	W 5	650	0
10	5	4S	W 5	650	0

20

♠ A8732
♥ 8
♦ 2
♣ Q97643

♠ J9
♥ Q92
♦ Q8753
♣ AJ8

♠ 1065
♥ A76
♦ 10964
♣ K105

♠ KQ4
♥ KJ10543
♦ AKJ
♣ 2

W N E S

Board (20) Av. = 140

N-S	E-W	Contract	N-S	E-W	IMP
1	9	4H	S-1	100	-6
9	1	3H	S 4	170	1
2	7	3H	S 5	200	2
7	2	4H	S 4	620	10
3	8	3H	S 5	200	2
8	3	4H	S-1	100	-6
4	6	3H	S 4	170	1
6	4	3H	S 3	140	0
5	10	3H	S 5	200	2
10	5	3H	S 4	170	1

21

♠ AJ
♥ AKJ1032
♦ 4
♣ AJ63

♠ K64
♥ Q76
♦ J98
♣ Q1074

♠ 109852
♥ 854
♦ AKQ3
♣ 8

♠ Q73
♥ 9
♦ 107652
♣ K952

W N E S

Board (21) Av. = 260

N-S	E-W	Contract	N-S	E-W	IMP
1	9	4H	N 4	620	8
9	1	5C	N 5	600	8
2	7	4H	N 4	620	8
7	2	3C	N 3	110	-4
3	8	2C	N 3	110	-4
8	3	2C	N 3	110	-4
4	6	1H	N 4	170	-3
6	4	3H	N 3	140	-3
5	10	1H	N 4	170	-3
10	5	3H	N 4	170	-3

22

♠ 854
♥ A43
♦ A96
♣ K972

♠ K
♥ 76
♦ QJ10543
♣ Q643

♠ J96
♥ QJ1095
♦ K872
♣ 5

♠ AQ10732
♥ K82
♦
♣ AJ108

W N E S

Board (22) Av. = 380

N-S	E-W	Contract	N-S	E-W	IMP
1	9	4S	S 6	480	3
9	1	6S	S-1	50	-10
2	7	4S	S 4	420	1
7	2	4S	S 6	480	3
3	8	4S	S 5	450	2
8	3	6S	S-2	100	-10
4	6	4S	S 5	450	2
6	4	4S	S 4	420	1
5	10	4S	S 4	420	1
10	5	4S	S 4	420	1

23

♠ 109
♥ 7
♦ J984
♣ QJ9863

♠ KQ8
♥ J1043
♦ Q3
♣ A542

♠ J6543
♥ K86
♦ K106
♣ K7

♠ A72
♥ AQ952
♦ A752
♣ 10

W N E S

Board (23) Av. = -10

N-S	E-W	Contract	N-S	E-W	IMP
1	9	2D	S-1	100	-3
9	1	3Cx	N 3	670	12
2	7	3D	S 3	110	3
7	2	2S	E 3	140	-4
3	8	2S	E 2	110	-3
8	3	2D	S 2	90	3
4	6	3S	E-1	100	3
6	4	2S	E 3	140	-4
5	10	1H	S 1	80	3
10	5	2S	E 2	110	-3

24

♠ 105
♥ J9875
♦ A108764
♣

♠ AJ876
♥ KQ42
♦ J5
♣ 85

♠ KQ43
♥ A103
♦ K3
♣ AK76

♠ 92
♥ 6
♦ Q92
♣ QJ109432

W N E S

Board (24) Av. = -790

N-S	E-W	Contract	N-S	E-W	IMP
1	9	4S	W 6	480	7
9	1	5S	W 6	480	7
2	7	5S	W 6	480	7
7	2	6S	W 6	980	-5
3	8	6S	W 6	980	-5
8	3	6S	W 6	980	-5
4	6	6S	W 6	980	-5
6	4	6S	W 6	980	-5
5	10	4S	W 6	480	7
10	5	6S	W 6	980	-5

木村六郎杯 フライトB Section B 2007年3月10日(土)

25

♠ J86
♥ Q3
♦ 32
♣ A108743

♠ 4
♥ 1054
♦ KQ875
♣ Q952

♠ A10
♥ KJ872
♦ A104
♣ KJ6

♠ KQ97532
♥ A96
♦ J96
♣

Diagram: N-S contract, N=North, S=South, W=West, E=East. N has a circle with 'N' and S has a circle with 'S'. W and E have lines connecting them to N and S respectively.

Board (25) Av. = -10

N-S	E-W	Contract	N-S	E-W	IMP
1	8 4S	S-1		50	-1
8	1 3D	W 5		150	-4
2	10 4Sx	S-1		100	-3
10	2 3NT	E-4	400		9
3	6 2S	S 3	140		4
6	3 5Sx	S-2		300	-7
4	9 4Sx	S-1		100	-3
9	4 2S	S 3	140		4
5	7 5S	S-2		100	-3
7	5 3S	S 3	140		4

26

♠ 106
♥ 7
♦ KQ108
♣ A98762

♠ Q2
♥ K9852
♦ A9762
♣ J

♠ J98
♥ J64
♦ J3
♣ KQ1053

♠ AK7543
♥ AQ103
♦ 54
♣ 4

Diagram: N-S contract, N=North, S=South, W=West, E=East. N has a circle with 'N' and S has a circle with 'S'. W and E have lines connecting them to N and S respectively.

Board (26) Av. = 140

N-S	E-W	Contract	N-S	E-W	IMP
1	8 2S	S 3	140		0
8	1 4S	S-1		100	-6
2	10 4S	S 4	620		10
10	2 3H	E-3		300	4
3	6 4S	S-1		100	-6
6	3 2S	S 4	170		1
4	9 3H	E-4		400	6
9	4 3S	S 4	170		1
5	7 4S	S-1		100	-6
7	5 2S	S 2	110		-1

27

♠ K83
♥ Q10832
♦ 4
♣ A986

♠ 642
♥ J764
♦ K2
♣ J432

♠ Q7
♥ K9
♦ AJ1063
♣ K1075

♠ AJ1095
♥ A5
♦ Q9875
♣ Q

Diagram: N-S contract, N=North, S=South, W=West, E=East. N has a circle with 'N' and S has a circle with 'S'. W and E have lines connecting them to N and S respectively.

Board (27) Av. = 210

N-S	E-W	Contract	N-S	E-W	IMP
1	8 3S	S 3	140		-2
8	1 3S	S 3	140		-2
2	10 4S	S-1		50	-6
10	2 4S	S 4	420		5
3	6 2S	S 3	140		-2
6	3 4S	S 4	420		5
4	9 2S	S 3	140		-2
9	4 2S	S 3	140		-2
5	7 4S	S 4	420		5
7	5 3S	S 4	170		-1

28

♠ 4
♥ AQJ9842
♦ QJ1097
♣

♠ KJ52
♥
♦ A4
♣ KJ109542

♠ A876
♥ K103
♦ 8632
♣ A3

♠ Q1093
♥ 765
♦ K5
♣ Q876

Diagram: N-S contract, N=North, S=South, W=West, E=East. N has a circle with 'N' and S has a circle with 'S'. W and E have lines connecting them to N and S respectively.

Board (28) Av. = -180

N-S	E-W	Contract	N-S	E-W	IMP
1	8 4S	W 4		420	-6
8	1 5Hx	N-1		200	-1
2	10 5C	W-2	100		7
10	2 5Hx	N-1		200	-1
3	6 4S	W 4		420	-6
6	3 5Hx	N-1		200	-1
4	9 5Sx	E-1	100		7
9	4 5Hx	N-1		200	-1
5	7 4S	W-2	100		7
7	5 4S	W 4		420	-6

29

♠ 86
♥ K10
♦ 943
♣ A86432

♠ K10532
♥ 8
♦ KJ105
♣ KQ10

♠ J974
♥ AQ96543
♦
♣ 95

♠ AQ
♥ J72
♦ AQ8762
♣ J7

Diagram: N-S contract, N=North, S=South, W=West, E=East. N has a circle with 'N' and S has a circle with 'S'. W and E have lines connecting them to N and S respectively.

Board (29) Av. = -220

N-S	E-W	Contract	N-S	E-W	IMP
1	8 3S	W 4		170	2
8	1 4S	W 4		620	-9
2	10 3D	S-1		100	3
10	2 4S	W-2	200		9
3	6 4S	W 4		620	-9
6	3 4S	W-1	100		8
4	9 4H	E 4		620	-9
9	4 4S	W-1	100		8
5	7 4S	W 4		620	-9
7	5 4S	W-2	200		9

30

♠ QJ6543
♥ A64
♦ 8
♣ 764

♠ AK2
♥ J3
♦ KJ1062
♣ J103

♠ 987
♥ Q10985
♦ AQ954
♣

♠ 10
♥ K72
♦ 73
♣ AKQ9852

Diagram: N-S contract, N=North, S=South, W=West, E=East. N has a circle with 'N' and S has a circle with 'S'. W and E have lines connecting them to N and S respectively.

Board (30) Av. = -130

N-S	E-W	Contract	N-S	E-W	IMP
1	8 2S	N 3	140		7
8	1 5D	W-1		50	5
2	10 4C	S 5	150		7
10	2 6Cx	S-2		300	-5
3	6 5D	W 5		400	-7
6	3 5D	W 5		400	-7
4	9 5D	E 5		400	-7
9	4 3NT	S 3	400		11
5	7 5Dx	W-1		100	6
7	5 5D	W 5		400	-7

31

♠ Q862
♥ 4
♦ K43
♣ 109842

♠ KJ10
♥ KQ1072
♦ A102
♣ Q5

♠ A9
♥ J
♦ QJ976
♣ AKJ63

♠ 7543
♥ A98653
♦ 85
♣ 7

Diagram: N-S contract, N=North, S=South, W=West, E=East. N has a circle with 'N' and S has a circle with 'S'. W and E have lines connecting them to N and S respectively.

Board (31) Av. = -330

N-S	E-W	Contract	N-S	E-W	IMP
1	8 4NT	W 5		460	-4
8	1 3NT	W 5		460	-4
2	10 3NT	W 6		490	-4
10	2 6D	E-1	50		9
3	6 3NT	W 5		460	-4
6	3 4NT	W 5		460	-4
4	9 5D	E 5		400	-2
9	4 6D	E-1	50		9
5	7 6NT	W-1		50	9
7	5 3NT	W 6		490	-4

32

♠ A965
♥ KQ104
♦ A94
♣ 76

♠ K7
♥ A982
♦ K75
♣ A842

♠ Q
♥ 753
♦ J10863
♣ KQJ9

♠ J108432
♥ J6
♦ Q2
♣ 1053

Diagram: N-S contract, N=North, S=South, W=West, E=East. N has a circle with 'N' and S has a circle with 'S'. W and E have lines connecting them to N and S respectively.

Board (32) Av. = 40

N-S	E-W	Contract	N-S	E-W	IMP
1	8 1NT	W 2		120	-4
8	1 3S	S-1		50	-3
2	10 2S	S 3	140		3
10	2 3S	S 4	170		4
3	6 3S	S-1		50	-3
6	3 3C	W 3		110	-4
4	9 4S	S-1		50	-3
9	4 2S	S 2	110		2
5	7 2S	S 4	170		4
7	5 3S	S 3	140		3

木村六郎杯 フライトB Section B 2007年3月10日(土)

33 ♠AK754
♥105
♦9654
♣J9

♠J1093
♥KJ8
♦AQ3
♣652

♠Q862
♥Q93
♦K1087
♣A4

♠
♥A7642
♦J2
♣KQ10873

Board (33) Av. = 20

N-S	E-W	Contract	N-S	E-W	IMP
1	8	1NT E-1	50		1
8	1	1NT E 1		90	-3
2	10	2H S 2	110		3
10	2	4S E-2	100		2
3	6	2H S-1		50	-2
6	3	2H W-2	100		2
4	9	2H S-1		50	-2
9	4	Passout			-1
5	7	2C S 5	150		4
7	5	2S N-2	100		-3

34 ♠AK10
♥KQ642
♦3
♣10943

♠7
♥AJ987
♦Q865
♣AK5

♠982
♥5
♦AK97
♣QJ762

♠QJ6543
♥103
♦J1042
♣8

Board (34) Av. = -20

N-S	E-W	Contract	N-S	E-W	IMP
1	8	3D W-2	100		3
8	1	3D W 5		150	-4
2	10	3NT E-2	100		3
10	2	4S S-2		200	-5
3	6	3D W 4		130	-3
6	3	3D W 5		150	-4
4	9	2S S 2	110		4
9	4	3NT E-2	100		3
5	7	3D W 5		150	-4
7	5	4D W-2	100		3

35 ♠K8765
♥75
♦K962
♣82

♠A109
♥983
♦J74
♣KJ105

♠43
♥KQ64
♦A108
♣Q943

♠QJ2
♥AJ102
♦Q53
♣A76

Board (35) Av. = 100

N-S	E-W	Contract	N-S	E-W	IMP
1	8	1NT S 1	90		0
8	1	2S N 4	170		2
2	10	1NT S 1	90		0
10	2	2S N 3	140		1
3	6	1NT S-1		50	-4
6	3	1NT S-1		50	-4
4	9	1NT S 4	180		2
9	4	2S N 3	140		1
5	7	1NT S 3	150		2
7	5	1NT S 1	90		0

36 ♠KQJ
♥1093
♦Q6542
♣107

♠542
♥KQ5
♦97
♣KQ853

♠A9763
♥AJ64
♦103
♣J9

♠108
♥872
♦AKJ8
♣A642

Board (36) Av. = -30

N-S	E-W	Contract	N-S	E-W	IMP
1	8	1NT N 2	120		4
8	1	3D N 3	110		4
2	10	2S E 2		110	-2
10	2	2S E 3		140	-3
3	6	2S E 2		110	-2
6	3	1NT N 2	120		4
4	9	3S E-1	100		4
9	4	2S E 3		140	-3
5	7	3D S-1		100	-2
7	5	2S E 2		110	-2

37 ♠J93
♥106532
♦Q4
♣A62

♠87
♥QJ94
♦873
♣KJ93

♠A652
♥AK7
♦K95
♣Q108

♠KQ104
♥8
♦AJ1062
♣754

Board (37) Av. = -90

N-S	E-W	Contract	N-S	E-W	IMP
1	7	1NT E 1	90		0
7	1	1NT E 3	150		-2
2	9	1NT E 2	120		-1
9	2	1NT W 1	90		0
3	10	1NT E 2	120		-1
10	3	2H E-1	50		4
4	5	2D N 3	110		5
5	4	1NT E 1	90		0
6	8	1NT E 2	120		-1
8	6	1NT E 3	150		-2

38 ♠
♥Q32
♦AQ963
♣A10632

♠J
♥K95
♦K754
♣KQ854

♠KQ109842
♥A764
♦
♣J9

♠A7653
♥J108
♦J1082
♣7

Board (38) Av. = -240

N-S	E-W	Contract	N-S	E-W	IMP
1	7	4Sx E 4	790		-11
7	1	3D N 3	110		8
2	9	4Sx E 4	790		-11
9	2	3NT N-2	100		4
3	10	4S E-1	100		8
10	3	5Dx N-1	100		4
4	5	4S E 4	620		-9
5	4	4S E-1	100		8
6	8	4S E 4	620		-9
8	6	3NT W-3	300		11

39 ♠A83
♥10754
♦93
♣K1043

♠107652
♥
♦A10872
♣Q75

♠Q
♥Q86
♦KQJ4
♣AJ862

♠KJ94
♥AKJ932
♦65
♣9

Board (39) Av. = -100

N-S	E-W	Contract	N-S	E-W	IMP
1	7	5D W 5	600		-11
7	1	5D W 5	600		-11
2	9	4H S-1	100		0
9	2	5Dx W-2	500		12
3	10	4H S-1	100		0
10	3	4C E 4	130		-1
4	5	5Cx E-2	500		12
5	4	4H S-1	100		0
6	8	4H S-1	100		0
8	6	4H S-2	200		-3

40 ♠J54
♥Q10973
♦1064
♣J8

♠Q63
♥KJ5
♦K8753
♣76

♠K1087
♥A62
♦A2
♣AK105

♠A92
♥84
♦QJ9
♣Q9432

Board (40) Av. = -450

N-S	E-W	Contract	N-S	E-W	IMP
1	7	3NT E 5	460		0
7	1	3NT E 4	430		1
2	9	3NT W 5	460		0
9	2	3NT E 5	460		0
3	10	3NT E 3	400		2
10	3	3NT E 5	460		0
4	5	3NT W 4	430		1
5	4	3NT E 4	430		1
6	8	3NT E 5	460		0
8	6	3NT E 4	430		1

木村六郎杯 フライトB Section B 2007年3月10日(土)

41

♠ A1053
♥ 103
♦ 872
♣ J864

♠ KJ76
♥ K8
♦ J9653
♣ K9

♠ 98
♥ AQJ752
♦ AQ
♣ 732

♠ Q42
♥ 964
♦ K104
♣ AQ105

(N) (E) (S) (W)

Board (41) Av. = -230

N-S	E-W	Contract	N-S	E-W	IMP
1	7	4H E-1	100		8
7	1	2NT W 2	120		3
2	9	4H E-1	100		8
9	2	4H E 4	620		-9
3	10	4H E 4	620		-9
10	3	3NT W-1	100		8
4	5	4H E 4	620		-9
5	4	3H E 4	170		2
6	8	4H E 4	620		-9
8	6	4H E-1	100		8

42

♠ Q754
♥ 75
♦ 10743
♣ J84

♠ K8
♥ AQ94
♦ KQ52
♣ A76

♠ AJ10
♥ J108
♦ AJ8
♣ Q953

♠ 9632
♥ K632
♦ 96
♣ K102

(N) (E) (S) (W)

Board (42) Av. = -780

N-S	E-W	Contract	N-S	E-W	IMP
1	7	4NT E 5	660		3
7	1	3NT E 6	690		3
2	9	6NT E 6	1440		-12
9	2	3NT E 6	690		3
3	10	3NT E 6	690		3
10	3	3NT E 6	690		3
4	5	4NT E 6	690		3
5	4	4NT E 6	690		3
6	8	6NT E 6	1440		-12
8	6	3NT E 6	690		3

43

♠ 7
♥ K95
♦ 9862
♣ KJ863

♠ AQJ862
♥ Q2
♦ KQ3
♣ A7

♠ K109
♥ AJ1064
♦ J75
♣ 52

♠ 543
♥ 873
♦ A104
♣ Q1094

(N) (E) (S) (W)

Board (43) Av. = -470

N-S	E-W	Contract	N-S	E-W	IMP
1	7	4S W 6	480		0
7	1	4S W 6	480		0
2	9	4S W 6	480		0
9	2	4S W 6	480		0
3	10	4S W 4	420		2
10	3	4S W 6	480		0
4	5	4S W 6	480		0
5	4	4S W 4	420		2
6	8	4S W 6	480		0
8	6	4S W 5	450		1

44

♠ 863
♥ Q53
♦ 53
♣ J10875

♠ KJ94
♥ A104
♦ AQ1076
♣ 9

♠ Q1052
♥ J76
♦ K9
♣ A432

♠ A7
♥ K982
♦ J842
♣ KQ6

(N) (E) (S) (W)

Board (44) Av. = -420

N-S	E-W	Contract	N-S	E-W	IMP
1	7	4S E 4	420		0
7	1	4S E 4	420		0
2	9	4S E 4	420		0
9	2	4S E 4	420		0
3	10	4S E 4	420		0
10	3	4S E 5	450		-1
4	5	4S E 5	450		-1
5	4	4S E 4	420		0
6	8	4S E 4	420		0
8	6	4S E 4	420		0

45

♠ J
♥ Q532
♦ K6543
♣ K82

♠ AK95
♥ AJ
♦ Q1092
♣ J53

♠ 842
♥ K9874
♦ J8
♣ A109

♠ Q10763
♥ 106
♦ A7
♣ Q764

(N) (E) (S) (W)

Board (45) Av. = -140

N-S	E-W	Contract	N-S	E-W	IMP
1	7	2NT W 3	150		0
7	1	2NT W 3	150		0
2	9	2NT W 2	120		1
9	2	2NT W 2	120		1
3	10	2NT W 3	150		0
10	3	2NT W 3	150		0
4	5	2NT W 2	120		1
5	4	2NT W 3	150		0
6	8	2NT W 5	210		-2
8	6	2NT W-1	100		6

46

♠ 4
♥ AKQJ9
♦ AQ932
♣ 42

♠ KJ1085
♥ 2
♦ K76
♣ J1073

♠ 92
♥ 876
♦ J108
♣ AQ965

♠ AQ763
♥ 10543
♦ 54
♣ K8

(N) (E) (S) (W)

Board (46) Av. = 470

N-S	E-W	Contract	N-S	E-W	IMP
1	7	4H N 5	450		-1
7	1	4H N 5	450		-1
2	9	4H N 5	450		-1
9	2	4H N 6	480		0
3	10	4H N 6	480		0
10	3	6H N 6	980		11
4	5	4H N 6	480		0
5	4	4H N 5	450		-1
6	8	4H N 6	480		0
8	6	4H N 5	450		-1

47

♠ 864
♥ QJ1087
♦ KQ
♣ 974

♠ AKQJ
♥ K6532
♦ A974
♣

♠ 53
♥ 4
♦ J1062
♣ K108632

♠ 10972
♥ A9
♦ 853
♣ AQJ5

(N) (E) (S) (W)

Board (47) Av. = -20

N-S	E-W	Contract	N-S	E-W	IMP
1	7	2D W 5	150		-4
7	1	1S W-1	50		2
2	9	2C E-2	100		3
9	2	2D W 4	130		-3
3	10	3D W 3	110		-3
10	3	2D W 4	130		-3
4	5	2S W-2	100		3
5	4	1S W 1	80		-2
6	8	3Hx W-1	100		3
8	6	3C E-1	50		2

48

♠ J107
♥ AKQ872
♦ K2
♣ K9

♠ 843
♥ 1054
♦ 1084
♣ Q543

♠ KQ952
♥ 3
♦ 3
♣ AJ10862

♠ A6
♥ J96
♦ AQJ9765
♣ 7

(N) (E) (S) (W)

Board (48) Av. = 750

N-S	E-W	Contract	N-S	E-W	IMP
1	7	6D S 7	940		5
7	1	4H N 7	510		-6
2	9	6H N 7	1010		6
9	2	6H N 7	1010		6
3	10	5H N 7	510		-6
10	3	3NT N 6	490		-6
4	5	6H N 6	980		6
5	4	6H N 7	1010		6
6	8	4H N 7	510		-6
8	6	4H N 7	510		-6

木村六郎杯 OPEN TEAMS Session 3 Flight B 2007年3月11日(日)

1

♠ 9
♥ A85
♦ AJ8643
♣ J84

♠ A863
♥ KQ107
♦ K52
♣ 76

♠ Q10542
♥ 964
♦ 7
♣ AK102

♠ KJ7
♥ J32
♦ Q109
♣ Q953

W N E S

Board (1) Av. = -110

N-S	E-W	Contract	N-S	E-W	IMP
1	6	3S E 3		140	-1
6	1	4S E-1	50		4
2	5	2S E 4		170	-2
5	2	2S E 3		140	-1
3	7	3S E 3		140	-1
7	3	3S E 3		140	-1
4	10	2S E 2		110	0
10	4	3S E-2	100		5
8	9	4S E 4		420	-7
9	8	2S E 2		110	0

2

♠ AJ
♥ 98
♦ AQJ106
♣ Q1063

♠ Q763
♥ A10
♦ K75
♣ KJ95

♠ 82
♥ KQJ765
♦ 92
♣ 874

♠ K10954
♥ 432
♦ 843
♣ A2

W N E S

Board (2) Av. = 50

N-S	E-W	Contract	N-S	E-W	IMP
1	6	4D N-1		100	-4
6	1	3S S-1		100	-4
2	5	3S S 3	140		3
5	2	3S S 4	170		3
3	7	3S S-1		100	-4
7	3	3D N 3	110		2
4	10	2S S 2	110		2
10	4	2H E-1	50		0
8	9	4H E-4	200		4
9	8	3H E-1	50		0

3

♠ 86
♥ Q8
♦ A765
♣ AKQ105

♠ J754
♥ KJ10965
♦ 10
♣ 43

♠ KQ2
♥ 732
♦ KQ943
♣ 86

♠ A1093
♥ A4
♦ J82
♣ J972

W N E S

Board (3) Av. = 230

N-S	E-W	Contract	N-S	E-W	IMP
1	6	3NT N-2		100	-8
6	1	3NT N 3	400		5
2	5	3NT N-1		50	-7
5	2	3NT S 3	400		5
3	7	3NT N 3	400		5
7	3	3NT N-1		50	-7
4	10	3NT N 3	400		5
10	4	3NT N 3	400		5
8	9	3NT N 3	400		5
9	8	3NT N-1		50	-7

4

♠ 10964
♥ AK1083
♦ J3
♣ 104

♠ Q2
♥ J65
♦ K104
♣ J9863

♠ AJ8
♥ Q94
♦ 8752
♣ AKQ

♠ K753
♥ 72
♦ AQ96
♣ 752

W N E S

Board (4) Av. = -70

N-S	E-W	Contract	N-S	E-W	IMP
1	6	1NT E 1		90	-1
6	1	1NT E 3		150	-2
2	5	2NT E 3		150	-2
5	2	1NT E 1		90	-1
3	7	1NT E 3		150	-2
7	3	1NT E 3		150	-2
4	10	2S N 2	110		5
10	4	2S S 2	110		5
8	9	1NT E 3		150	-2
9	8	2H N 2	110		5

5

♠ Q432
♥ K654
♦ J8
♣ QJ4

♠ K9876
♥ AJ9
♦ 92
♣ 1065

♠ AJ
♥ 8
♦ K107643
♣ A987

♠ 105
♥ Q10732
♦ AQ5
♣ K32

W N E S

Board (5) Av. = 30

N-S	E-W	Contract	N-S	E-W	IMP
1	6	2H S 3	140		3
6	1	3D E 3		110	-4
2	5	2D E 3		110	-4
5	2	3NT W-2	100		2
3	7	3C E-2	100		2
7	3	2D E 2		90	-3
4	10	2D E 2		90	-3
10	4	5D E-2	100		2
8	9	3NT W-4	200		5
9	8	2H S 2	110		2

6

♠ J10742
♥ A98764
♦ 2
♣ A

♠ K65
♥ Q
♦ A10953
♣ Q1093

♠ AQ
♥ 1032
♦ J84
♣ K8642

♠ 983
♥ KJ5
♦ KQ76
♣ J75

W N E S

Board (6) Av. = 130

N-S	E-W	Contract	N-S	E-W	IMP
1	6	4H S-2		100	-6
6	1	4H N-2		100	-6
2	5	4H S-1		50	-5
5	2	3H S 3	140		0
3	7	2H N 2	110		-1
7	3	2S N 3	140		0
4	10	4H N 4	420		7
10	4	4H N-1		50	-5
8	9	4H N 4	420		7
9	8	4H S 4	420		7

7

♠ 43
♥ A8
♦ 7532
♣ J6432

♠ AQ10987
♥ 7
♦ AKQ1096
♣

♠ K5
♥ KJ4
♦ J8
♣ AQ10975

♠ J62
♥ Q1096532
♦ 4
♣ K8

W N E S

Board (7) Av. = -1240

N-S	E-W	Contract	N-S	E-W	IMP
1	6	4S W 6		680	11
6	1	6NT E 6		1440	-5
2	5	6NT E 7		1470	-6
5	2	6S W 6		1430	-5
3	7	6S W 6		1430	-5
7	3	4S W 6		680	11
4	10	6D W 6		1370	-4
10	4	6S W 6		1430	-5
8	9	7NT E-1	100		16
9	8	6S W 6		1430	-5

8

♠ J764
♥ J832
♦ 42
♣ 1072

♠ K83
♥
♦ AKQJ983
♣ J86

♠ AQ952
♥ AQ75
♦
♣ KQ94

♠ 10
♥ K10964
♦ 10765
♣ A53

W N E S

Board (8) Av. = -600

N-S	E-W	Contract	N-S	E-W	IMP
1	6	5S E 6		480	3
6	1	3NT E 6		490	3
2	5	6S E 6		980	-9
5	2	6NT E 6		990	-9
3	7	3NT E 6		490	3
7	3	5S E 5		450	4
4	10	4S E 5		450	4
10	4	6S E-1	50		12
8	9	6S E 6		980	-9
9	8	4S E 5		450	4

9

♠ Q10543
♥ A
♦ K9652
♣ Q9

♠ 6
♥ K863
♦ Q7
♣ AK6532

♠ AK72
♥ QJ10754
♦ AJ10
♣

♠ J98
♥ 92
♦ 843
♣ J10874

Board (9) Av. = -870

N-S	E-W	Contract	N-S	E-W	IMP
1	6	4H	E 6	680	5
6	1	4H	E 6	680	5
2	5	4H	E 6	680	5
5	2	6H	E 6	1430	-11
3	7	5H	E 6	680	5
7	3	5H	E 6	680	5
4	10	5H	E 6	680	5
10	4	4H	E 6	680	5
8	9	6H	W 6	1430	-11
9	8	6H	E 6	1430	-11

10

♠ AKQ9
♥ J85
♦ Q5
♣ Q976

♠ 4
♥ 10943
♦ A106
♣ KJ1054

♠ J10862
♥ A
♦ 9832
♣ A83

♠ 753
♥ KQ762
♦ KJ74
♣ 2

Board (10) Av. = 120

N-S	E-W	Contract	N-S	E-W	IMP
1	6	1NT	N 3	150	1
6	1	1NT	S 5	210	3
2	5	3H	S 4	170	2
5	2	2D	E 2	90	-5
3	7	1NT	S 1	90	-1
7	3	1NT	S 4	180	2
4	10	3H	S 4	170	2
10	4	4NT	N-2	200	-8
8	9	2H	S 4	170	2
9	8	2H	S 2	110	0

11

♠ 763
♥ AK6
♦ AK54
♣ A93

♠ AQ42
♥ Q108
♦ J982
♣ K5

♠ K8
♥ J5
♦ Q63
♣ Q108742

♠ J1095
♥ 97432
♦ 107
♣ J6

Board (11) Av. = 20

N-S	E-W	Contract	N-S	E-W	IMP
1	6	3H	N 3	140	3
6	1	1NT	N-1	50	-2
2	5	2H	S 2	110	3
5	2	4H	S-2	100	-3
3	7	3C	E-2	100	2
7	3	3H	S-1	50	-2
4	10	2H	N 2	110	3
10	4	3H	N-2	100	-3
8	9	3H	N-1	50	-2
9	8	2H	N 2	110	3

12

♠ J84
♥ Q109864
♦ 62
♣ 54

♠ AK10732
♥ K
♦ AQJ3
♣ 32

♠ 95
♥ A5
♦ K10954
♣ KQ108

♠ Q6
♥ J732
♦ 87
♣ AJ976

Board (12) Av. = -570

N-S	E-W	Contract	N-S	E-W	IMP
1	6	6D	E 6	920	-8
6	1	4S	W 5	450	3
2	5	6D	W 6	920	-8
5	2	5D	E 6	420	4
3	7	5S	W 5	450	3
7	3	5D	E 6	420	4
4	10	4S	W 5	450	3
10	4	3NT	E 6	490	2
8	9	6D	E 6	920	-8
9	8	5S	W 5	450	3

13

♠ A1084
♥ 73
♦ 1087
♣ J1052

♠ Q65
♥ AQJ54
♦ KQ9
♣ 96

♠ KJ93
♥ K986
♦
♣ AQ873

♠ 72
♥ 102
♦ AJ65432
♣ K4

Board (13) Av. = -640

N-S	E-W	Contract	N-S	E-W	IMP
1	5	6H	W-1	100	12
5	1	4H	E 5	650	0
2	6	4H	W 5	650	0
6	2	4H	W 5	650	0
3	9	4H	W 4	620	1
9	3	4H	W 5	650	0
4	8	4H	W 4	620	1
8	4	4H	W 4	620	1
7	10	4H	E 5	650	0
10	7	4H	W 4	620	1

14

♠ 942
♥ Q10
♦ AJ9
♣ AJ852

♠ 103
♥ 854
♦ K75
♣ Q7643

♠ A5
♥ AKJ972
♦ 6432
♣ K

♠ KQJ876
♥ 63
♦ Q108
♣ 109

Board (14) Av. = 110

N-S	E-W	Contract	N-S	E-W	IMP
1	5	4H	E-1	50	-2
5	1	4H	E-2	100	0
2	6	3S	S 4	170	2
6	2	4S	S-1	50	-4
3	9	3S	S 3	140	1
9	3	3S	S 4	170	2
4	8	3S	S 4	170	2
8	4	5Hx	E-2	300	5
7	10	4H	E-2	100	0
10	7	2H	E 2	110	-6

15

♠ AJ53
♥ AK10
♦ Q863
♣ 85

♠ 98742
♥ 54
♦ A5
♣ AQ97

♠ 106
♥ 98762
♦ K72
♣ J42

♠ KQ
♥ QJ3
♦ J1094
♣ K1063

Board (15) Av. = 540

N-S	E-W	Contract	N-S	E-W	IMP
1	5	2D	N 4	130	-9
5	1	3NT	S-1	100	-12
2	6	3NT	S 3	600	2
6	2	3NT	S 3	600	2
3	9	3NT	N 3	600	2
9	3	3NT	S 3	600	2
4	8	3NT	N 3	600	2
8	4	3NT	S 3	600	2
7	10	3NT	S 3	600	2
10	7	3NT	N 3	600	2

16

♠ KJ5
♥
♦ KQ10854
♣ Q1032

♠ 92
♥ AKJ10843
♦ 972
♣ 7

♠ AQ10876
♥ 97
♦ A63
♣ A6

♠ 43
♥ Q652
♦ J
♣ KJ9854

Board (16) Av. = -510

N-S	E-W	Contract	N-S	E-W	IMP
1	5	5Cx	N-1	100	9
5	1	4H	W 4	620	-3
2	6	5Dx	N-4	800	-7
6	2	4H	W 4	620	-3
3	9	4H	W 4	620	-3
9	3	5Cx	N-1	100	9
4	8	4S	W 4	620	-3
8	4	3NT	E 5	660	-4
7	10	3H	W 5	200	7
10	7	4H	W 4	620	-3

17

♠ KQ5
♥ A
♦ QJ5
♣ Q98742

♠ 106
♥ QJ10863
♦ K7
♣ 1053

♠ AJ742
♥ 4
♦ A9832
♣ AK

♠ 983
♥ K9752
♦ 1064
♣ J6

W N E S

Board (17) Av. = -180

N-S	E-W	Contract	N-S	E-W	IMP
1	5	3S E 5	200		-1
5	1	3S E 4	170		0
2	6	3C N-3	150		1
6	2	4H W-1	50		6
3	9	2S E 5	200		-1
9	3	3S E 5	200		-1
4	8	2S W 4	170		0
8	4	2S E 4	170		0
7	10	2S E 5	200		-1
10	7	1S E 3	140		1

18

♠ J9862
♥ K96
♦ A43
♣ J4

♠ AK
♥ Q854
♦ KQ96
♣ 986

♠ Q10754
♥ J
♦ J1082
♣ K72

♠ 3
♥ A10732
♦ 75
♣ AQ1053

W N E S

Board (18) Av. = 200

N-S	E-W	Contract	N-S	E-W	IMP
1	5	2H S 3	140		-2
5	1	4H S 4	620		9
2	6	3H N 4	170		-1
6	2	4H S 4	620		9
3	9	2H S 4	170		-1
9	3	1NT W-3	150		-2
4	8	2H N 4	170		-1
8	4	3D W-2	100		-3
7	10	2H N 2	110		-3
10	7	2D W-1	50		-4

19

♠ AQ854
♥ 7542
♦ Q54
♣ 7

♠ KJ72
♥ 10986
♦ 3
♣ A632

♠ 96
♥ KJ3
♦ K872
♣ K1054

♠ 103
♥ AQ
♦ AJ1096
♣ QJ98

W N E S

Board (19) Av. = 140

N-S	E-W	Contract	N-S	E-W	IMP
1	5	2D S 5	150		0
5	1	2NT S 5	210		2
2	6	2D S 4	130		0
6	2	2D S 4	130		0
3	9	2D S 4	130		0
9	3	2NT S 2	120		-1
4	8	Av-			-3
8	4	Average			0
7	10	2D S 5	150		0
10	7	2D S 3	110		-1

20

♠ Q9765
♥ K53
♦ AK
♣ K85

♠ A
♥ J108742
♦ 7
♣ AJ1064

♠ K83
♥ 9
♦ J865432
♣ Q9

♠ J1042
♥ AQ6
♦ Q109
♣ 732

W N E S

Board (20) Av. = -80

N-S	E-W	Contract	N-S	E-W	IMP
1	5	2S N 3	140		6
5	1	4S N-1	100		-1
2	6	4S N-1	100		-1
6	2	4S N-1	100		-1
3	9	4S N-2	200		-3
9	3	4S N-2	200		-3
4	8	3S N 4	170		6
8	4	2D E 2	90		0
7	10	4S N-1	100		-1
10	7	4S N-1	100		-1

21

♠ 83
♥ KQ953
♦ A74
♣ J84

♠ A654
♥ 1072
♦ QJ9
♣ AQ10

♠ KJ107
♥ A6
♦ 653
♣ 9652

♠ Q92
♥ J84
♦ K1082
♣ K73

W N E S

Board (21) Av. = -110

N-S	E-W	Contract	N-S	E-W	IMP
1	5	2S W 2	110		0
5	1	2S E-1	50		4
2	6	2S W 3	140		-1
6	2	2S W 3	140		-1
3	9	2S W 2	110		0
9	3	2S W 2	110		0
4	8	2S W-1	50		4
8	4	3H N-2	200		-3
7	10	3S W 3	140		-1
10	7	2S E 3	140		-1

22

♠ K653
♥ A97
♦ K9
♣ Q1054

♠ QJ107
♥ Q10864
♦ AJ6
♣ 6

♠ A98
♥ 32
♦ Q10842
♣ 972

♠ 42
♥ KJ5
♦ 753
♣ AKJ83

W N E S

Board (22) Av. = 0

N-S	E-W	Contract	N-S	E-W	IMP
1	5	3NT N-1	50		-2
5	1	3NT S 4	430		10
2	6	3NT S-1	50		-2
6	2	2NT S 2	120		3
3	9	3NT N-1	50		-2
9	3	3NT S-1	50		-2
4	8	3NT S-1	50		-2
8	4	2NT S 3	150		4
7	10	3NT N-2	100		-3
10	7	3NT N-1	50		-2

23

♠ QJ1043
♥ Q94
♦ QJ5
♣ A6

♠ 985
♥ K872
♦ 92
♣ KJ74

♠ A62
♥ A3
♦ A1043
♣ 10953

♠ K7
♥ J1065
♦ K876
♣ Q82

W N E S

Board (23) Av. = 50

N-S	E-W	Contract	N-S	E-W	IMP
1	5	1NT S 3	150		3
5	1	1NT S 1	90		1
2	6	1NT S 3	150		3
6	2	1NT S 1	90		1
3	9	1NT S 1	90		1
9	3	2D N-1	100		-4
4	8	1NT S 2	120		2
8	4	1NT S-1	100		-4
7	10	1NT S-1	100		-4
10	7	1NT S 1	90		1

24

♠ K9
♥ A943
♦ QJ1052
♣ J9

♠ AQ1083
♥ K5
♦ A93
♣ A53

♠ 64
♥ J7
♦ 8764
♣ Q10862

♠ J752
♥ Q10862
♦ K
♣ K74

W N E S

Board (24) Av. = 0

N-S	E-W	Contract	N-S	E-W	IMP
1	5	1S W 2	110		-3
5	1	2S W-1	50		2
2	6	3H S 3	140		4
6	2	3H S 3	140		4
3	9	1S W 1	80		-2
9	3	4H S-2	100		-3
4	8	3H N 3	140		4
8	4	1S W 3	140		-4
7	10	1S W-1	50		2
10	7	1S W 2	110		-3

木村六郎杯 OPEN TEAMS Session 4 Flight B 2007年3月11日(日)

1

♠AJ
♥A83
♦QJ653
♣A95

♠K95
♥Q1092
♦97
♣KJ74

♠Q2
♥J764
♦1042
♣Q1062

♠1087643
♥K5
♦AK8
♣83

W N E S

Board (1) Av. = 450

N-S	E-W	Contract	N-S	E-W	IMP
1	4	4S	N 4	420	-1
4	1	4S	S 4	420	-1
2	3	4S	N 4	420	-1
3	2	4S	N 6	480	1
5	6	6S	N 6	980	11
6	5	4S	N 6	480	1
7	8	4S	N 4	420	-1
8	7	4S	N 5	450	0
9	10	4S	N 6	480	1
10	9	4S	N 6	480	1

2

♠A10854
♥Q73
♦876
♣A3

♠92
♥A9862
♦1042
♣1084

♠KQJ63
♥54
♦K5
♣Q652

♠7
♥KJ10
♦AQJ93
♣KJ97

W N E S

Board (2) Av. = 500

N-S	E-W	Contract	N-S	E-W	IMP
1	4	3D	S 4	130	-9
4	1	3NT	N 3	600	3
2	3	3NT	N 3	600	3
3	2	3NT	N 4	630	4
5	6	3NT	N 4	630	4
6	5	3NT	N 4	630	4
7	8	3NT	N 3	600	3
8	7	3D	S 5	150	-8
9	10	3NT	N 3	600	3
10	9	2NT	N 3	150	-8

3

♠J107
♥AK87
♦K52
♣1065

♠AK64
♥65
♦106
♣A9432

♠Q832
♥J1032
♦AQ3
♣KQ

♠95
♥Q94
♦J9874
♣J87

W N E S

Board (3) Av. = -530

N-S	E-W	Contract	N-S	E-W	IMP
1	4	3S	E 5	200	8
4	1	4S	W-1	100	12
2	3	3NT	W 4	630	-3
3	2	4S	E 5	650	-3
5	6	4S	E 5	650	-3
6	5	4S	E 5	650	-3
7	8	4S	E 4	620	-3
8	7	4S	E 5	650	-3
9	10	3S	E 5	200	8
10	9	4S	E 4	620	-3

4

♠KJ982
♥63
♦K1096
♣72

♠64
♥KQJ985
♦Q752
♣6

♠53
♥A742
♦J3
♣A9543

♠AQ107
♥10
♦A84
♣KQJ108

W N E S

Board (4) Av. = 620

N-S	E-W	Contract	N-S	E-W	IMP
1	4	4S	N 4	620	0
4	1	4S	N 4	620	0
2	3	4S	N 5	650	1
3	2	4S	N 5	650	1
5	6	4S	N 4	620	0
6	5	4S	N 4	620	0
7	8	4S	N 4	620	0
8	7	3C	S-1	100	-12
9	10	4S	N 4	620	0
10	9	4S	N 4	620	0

5

♠752
♥J1087
♦95
♣A765

♠J1093
♥AKQ65
♦A4
♣98

♠AQ84
♥94
♦J10732
♣J10

♠K6
♥32
♦KQ86
♣KQ432

W N E S

Board (5) Av. = -200

N-S	E-W	Contract	N-S	E-W	IMP
1	4	3S	E 4	170	1
4	1	3S	E 4	170	1
2	3	3S	E 4	170	1
3	2	2S	E 4	170	1
5	6	4S	E 4	420	-6
6	5	3S	W 4	170	1
7	8	3S	E 3	140	2
8	7	4S	E 4	420	-6
9	10	3S	E 4	170	1
10	9	2S	W 4	170	1

6

♠10983
♥J9
♦KQ84
♣1054

♠QJ4
♥K107
♦1076
♣A762

♠A762
♥AQ852
♦95
♣J9

♠K5
♥643
♦AJ32
♣KQ83

W N E S

Board (6) Av. = -50

N-S	E-W	Contract	N-S	E-W	IMP
1	4	3H	W 3	140	-3
4	1	1NT	N-1	50	0
2	3	3C	S-2	100	-2
3	2	3H	W 3	140	-3
5	6	4S	W-2	200	6
6	5	3H	W-1	100	4
7	8	1NT	E 2	120	-2
8	7	2H	W 3	140	-3
9	10	2H	W 2	110	-2
10	9	3H	W-2	200	6

7

♠Q976
♥K1073
♦A764
♣9

♠A1052
♥862
♦Q85
♣QJ5

♠AJ4
♥KJ1093
♦K10642
♣KJ843

♠KJ843
♥Q95
♦2
♣A873

W N E S

Board (7) Av. = -60

N-S	E-W	Contract	N-S	E-W	IMP
1	4	4D	W 5	150	-3
4	1	2D	E-1	100	4
2	3	2D	W 2	90	-1
3	2	2D	W 3	110	-2
5	6	2D	E 2	90	-1
6	5	2D	W-1	100	4
7	8	3H	N-2	200	-4
8	7	2D	W-1	100	4
9	10	2H	N-1	100	-1
10	9	4S	S-1	100	-1

8

♠KJ63
♥7653
♦1086
♣108

♠108
♥94
♦AJ
♣AKJ9643

♠A9752
♥Q108
♦K94
♣Q7

♠Q4
♥AKJ2
♦Q7532
♣52

W N E S

Board (8) Av. = -380

N-S	E-W	Contract	N-S	E-W	IMP
1	4	3NT	W 5	460	-2
4	1	3NT	E 5	460	-2
2	3	3NT	E 5	460	-2
3	2	5C	E-2	100	10
5	6	3NT	W 5	460	-2
6	5	3C	E 5	150	6
7	8	3NT	E 4	430	-2
8	7	3C	E 5	150	6
9	10	3NT	W 5	460	-2
10	9	3NT	E 5	460	-2

9

♠K
♥AQ10
♦AKQJ62
♣KJ10

♠J87
♥K84
♦1083
♣Q975

♠643
♥J965
♦4
♣A8642

♠AQ10952
♥732
♦975
♣3

Board (9) Av. = 700

N-S	E-W	Contract	N-S	E-W	IMP
1	4	6D	N 6	920	6
4	1	6D	N 6	920	6
2	3	6D	N 6	920	6
3	2	6D	N 6	920	6
5	6	6D	N 6	920	6
6	5	5D	N 6	420	-7
7	8	5D	N 6	420	-7
8	7	3NT	N 7	520	-5
9	10	3NT	N 6	490	-5
10	9	4S	N 6	480	-6

10

♠A
♥9754
♦Q765
♣AQJ10

♠J96
♥AK6
♦1082
♣K874

♠K8732
♥1083
♦A9
♣962

♠Q1054
♥QJ2
♦KJ43
♣53

Board (10) Av. = 130

N-S	E-W	Contract	N-S	E-W	IMP
1	4	1NT	N 3	150	1
4	1	2D	N 4	130	0
2	3	2D	N 4	130	0
3	2	2S	E-2	200	2
5	6	1NT	N 3	150	1
6	5	2S	E-1	100	-1
7	8	1NT	N 1	90	-1
8	7	1NT	N 2	120	0
9	10	3D	S 3	110	-1
10	9	1NT	N 2	120	0

11

♠93
♥AJ972
♦A98
♣543

♠A842
♥Q10
♦1075
♣A986

♠KJ1075
♥K43
♦KJ3
♣102

♠Q6
♥865
♦Q642
♣KQJ7

Board (11) Av. = -90

N-S	E-W	Contract	N-S	E-W	IMP
1	4	2S	E 3	140	-2
4	1	4S	W-1	50	4
2	3	3S	E-1	50	4
3	2	2S	E 3	140	-2
5	6	2S	E 3	140	-2
6	5	2S	E 3	140	-2
7	8	3S	E 3	140	-2
8	7	3S	E 3	140	-2
9	10	3H	W-1	50	4
10	9	3S	E 3	140	-2

12

♠64
♥J732
♦J74
♣10752

♠AJ983
♥9
♦KQ5
♣K963

♠107
♥AK6
♦A102
♣AQJ84

♠KQ52
♥Q10854
♦9863
♣

Board (12) Av. = -920

N-S	E-W	Contract	N-S	E-W	IMP
1	4	6C	E 6	920	0
4	1	6C	E 6	920	0
2	3	6C	E 6	920	0
3	2	6C	E 6	920	0
5	6	6C	E 6	920	0
6	5	6C	E 6	920	0
7	8	6C	E 6	920	0
8	7	6C	E 6	920	0
9	10	7C	E-1	50	14
10	9	6C	E 6	920	0

13

♠J73
♥AQJ9762
♦J84

♠QJ8752
♥6
♦854
♣1095

♠A10643
♥1054
♦K3
♣K76

♠K9
♥AKQ982
♦10
♣AQ32

Board (13) Av. = 920

N-S	E-W	Contract	N-S	E-W	IMP
1	3	4H	S 6	680	-6
3	1	5D	N 6	620	-7
2	4	4H	S 6	680	-6
4	2	6H	S 6	1430	11
5	8	6H	S 6	1430	11
8	5	6H	S 6	1430	11
6	10	5H	S 6	680	-6
10	6	4H	S 6	680	-6
7	9	5Hx	S 6	1050	4
9	7	3NT	S 6	690	-6

14

♠A3
♥K85
♦10874
♣KQJ10

♠KJ10764
♥A3
♦K
♣A987

♠9
♥Q976
♦A9632
♣432

♠Q852
♥J1042
♦QJ5
♣65

Board (14) Av. = -70

N-S	E-W	Contract	N-S	E-W	IMP
1	3	2S	W 2	110	-1
3	1	2S	W-1	50	3
2	4	2S	W 2	110	-1
4	2	2S	W 2	110	-1
5	8	2S	W 2	110	-1
8	5	2S	W-1	50	3
6	10	2S	W 2	110	-1
10	6	2S	W 2	110	-1
7	9	2S	W 2	110	-1
9	7	2C	W-2	100	5

15

♠QJ92
♥1043
♦AJ1072
♣Q

♠AK8653
♥7
♦9
♣KJ873

♠7
♥K9865
♦Q8543
♣42

♠104
♥AQJ2
♦K6
♣A10965

Board (15) Av. = 140

N-S	E-W	Contract	N-S	E-W	IMP
1	3	3NT	N 4	630	10
3	1	1NT	N 3	150	0
2	4	1NT	N 3	150	0
4	2	2S	W-1	50	-3
5	8	3NT	N-1	100	-6
8	5	2Sx	W 2	470	-12
6	10	1NT	N 3	150	0
10	6	2S	W-1	50	-3
7	9	3NT	N 3	600	10
9	7	2S	W-2	100	-1

16

♠A8
♥J109
♦K10865
♣1052

♠KQ7
♥AK83
♦973
♣AJ3

♠9643
♥652
♦J42
♣764

♠J1052
♥Q74
♦AQ
♣KQ98

Board (16) Av. = 230

N-S	E-W	Contract	N-S	E-W	IMP
1	3	1NT	W-3	300	2
3	1	1NT	W-2	200	-1
2	4	1NT	W-2	200	-1
4	2	1NT	W-2	200	-1
5	8	1NT	W-1	100	-4
8	5	1NT	W-3	300	2
6	10	1NT	W-3	300	2
10	6	1NT	W-2	200	-1
7	9	1NT	W-3	300	2
9	7	1NT	W-1	100	-4

17

♠K9642
♥10754
♦73
♣J9

♠105
♥82
♦Q1095
♣A10865

♠73
♥AJ963
♦AJ62
♣32

♠AQJ8
♥KQ
♦K84
♣KQ74

Board (17) Av. = 430

N-S	E-W	Contract	N-S	E-W	IMP
1	3 4S	N 5	450		1
3	1 4S	S 4	420		0
2	4 4S	S 4	420		0
4	2 4S	N 5	450		1
5	8 4S	S 4	420		0
8	5 4S	S 4	420		0
6	10 4S	S 4	420		0
10	6 4S	S 4	420		0
7	9 4S	S 5	450		1
9	7 4S	S 4	420		0

18

♠K9
♥K10984
♦A10
♣J1062

♠AQJ1074
♥753
♦J64
♣Q

♠65
♥AQ2
♦K9852
♣973

♠832
♥J6
♦Q73
♣AK854

Board (18) Av. = -90

N-S	E-W	Contract	N-S	E-W	IMP
1	3 2S	W 2	110		-1
3	1 2S	W 3	140		-2
2	4 3C	S 3	110		5
4	2 3C	S-1	100		0
5	8 2S	W 2	110		-1
8	5 2S	W 2	110		-1
6	10 1NT	E 1	90		0
10	6 2S	W 2	110		-1
7	9 2NT	E-1	50		4
9	7 2S	W 2	110		-1

19

♠QJ10984
♥62
♦9
♣10432

♠6
♥AKQ873
♦AJ73
♣J8

♠K52
♥J
♦KQ8652
♣AQ7

♠A73
♥10954
♦104
♣K965

Board (19) Av. = -880

N-S	E-W	Contract	N-S	E-W	IMP
1	3 6D	E 6	1370		-10
3	1 6D	W 6	1370		-10
2	4 6D	E 7	1390		-11
4	2 4Sx	N-2	300		11
5	8 6D	E 6	1370		-10
8	5 3NT	E 7	720		4
6	10 5D	E 6	620		6
10	6 4H	W 5	650		6
7	9 6D	E-1	100		14
9	7 5D	E 6	620		6

20

♠103
♥AQJ75
♦KJ
♣10842

♠Q
♥K43
♦AQ7543
♣Q75

♠J9752
♥96
♦92
♣AK96

♠AK864
♥1082
♦1086
♣J3

Board (20) Av. = 100

N-S	E-W	Contract	N-S	E-W	IMP
1	3 2H	N-1	100		-5
3	1 3D	W-1	100		0
2	4 2H	N 4	170		2
4	2 3D	W-2	200		3
5	8 3D	W-1	100		0
8	5 3D	W-1	100		0
6	10 2H	N 3	140		1
10	6 2H	N 4	170		2
7	9 2H	N 3	140		1
9	7 2D	W 2	90		-5

21

♠QJ7632
♥932
♦K10
♣A10

♠A10985
♥K
♦A76
♣9743

♠J108654
♥982
♣KJ52

♠K4
♥AQ7
♦QJ543
♣Q86

Board (21) Av. = -90

N-S	E-W	Contract	N-S	E-W	IMP
1	3 3NT	N 3	600		12
3	1 4S	N-3	300		-5
2	4 4S	N-3	300		-5
4	2 3S	N-2	200		-3
5	8 2D	S-1	100		0
8	5 1NT	N 4	180		7
6	10 3D	S-2	200		-3
10	6 4S	N-3	300		-5
7	9 2NT	N 2	120		5
9	7 2S	N 2	110		5

22

♠A76
♥J42
♦A853
♣1074

♠KQ10954
♥KQ5
♦107
♣63

♠82
♥109873
♦642
♣AK9

♠J3
♥A6
♦KQJ9
♣QJ852

Board (22) Av. = 50

N-S	E-W	Contract	N-S	E-W	IMP
1	3 1NT	N-1	50		-3
3	1 1NT	N-1	50		-3
2	4 1NT	N 1	90		1
4	2 1NT	N 2	120		2
5	8 1NT	N-2	100		-4
8	5 1NT	N-1	50		-3
6	10 2D	N 4	130		2
10	6 1NT	N 1	90		1
7	9 3C	S 3	110		2
9	7 3C	S 3	110		2

23

♠J107
♥104
♦AQJ10642
♣8

♠AQ64
♥KJ95
♦983
♣Q7

♠832
♥A62
♦K7
♣A10643

♠K95
♥Q873
♦KJ952

Board (23) Av. = 20

N-S	E-W	Contract	N-S	E-W	IMP
1	3 5C	W-4	400		9
3	1 3NT	E-1	100		2
2	4 2NT	E 2	120		-4
4	2 2NT	E 3	150		-5
5	8 1NT	E 3	150		-5
8	5 2NT	E 3	150		-5
6	10 2NT	E 2	120		-4
10	6 3NT	E-2	200		5
7	9 4C	E-2	200		5
9	7 3H	W-2	200		5

24

♠543
♥J53
♦K1075
♣832

♠107
♥KQ742
♦Q43
♣QJ7

♠AKQJ982
♥6
♦AJ982
♣

♠6
♥A1098
♦6
♣AK109654

Board (24) Av. = -330

N-S	E-W	Contract	N-S	E-W	IMP
1	3 5S	E-1	50		9
3	1 5S	E 5	450		-3
2	4 5S	E-1	50		9
4	2 6S	E-1	50		9
5	8 4S	E 6	480		-4
8	5 4S	E 5	450		-3
6	10 4S	E 4	420		-3
10	6 4S	E 5	450		-3
7	9 4S	E 5	450		-3
9	7 4S	E 6	480		-4

25 ♠K105432
♥A75
♦10
♣K32

♠J ♠Q76
♥KJ62 ♥1043
♦A754 ♦J32
♣QJ98 ♣A1054

♠A98
♥Q98
♦KQ986
♣76

26 ♠KJ8
♥J63
♦763
♣AJ72

♠A103 ♠Q6542
♥AQ72 ♥K105
♦AK92 ♦J105
♣96 ♣53

♠97
♥984
♦Q84
♣KQ1084

27 ♠J43
♥107543
♦75
♣QJ7

♠K82 ♠Q109
♥K2 ♥96
♦J9432 ♦KQ6
♣K52 ♣A10963

♠A765
♥AQJ8
♦A108
♣84

28 ♠QJ93
♥106
♦KQ7
♣A742

♠A2 ♠84
♥AKQJ2 ♥97543
♦109 ♦J64
♣KJ95 ♣1063

♠K10765
♥8
♦A8532
♣Q8

Board (25) Av. = 60

N-S	E-W	Contract	N-S	E-W	IMP
1	2 4S	N 4	420		8
2	1 4S	N-3	150		-5
3	4 3S	N-1	50		-3
4	3 4S	N-1	50		-3
5	9 3S	N 3	140		2
9	5 2S	N 6	230		5
6	7 4S	N-2	100		-4
7	6 2S	N 2	110		2
8	10	Passout			-2
10	8 3S	N 5	200		4

Board (26) Av. = -210

N-S	E-W	Contract	N-S	E-W	IMP
1	2 2S	W 6	230		-1
2	1 2S	W 6	230		-1
3	4 2S	W 5	200		0
4	3 2S	W 5	200		0
5	9 2S	W 6	230		-1
9	5 2S	W 5	200		0
6	7 2S	W 6	230		-1
7	6 2S	W 3	140		2
8	10 2S	W 5	200		0
10	8 2S	W 4	170		1

Board (27) Av. = -40

N-S	E-W	Contract	N-S	E-W	IMP
1	2 3H	N-2	100		-2
2	1 2H	S-1	50		0
3	4 2H	S-1	50		0
4	3 2H	S-1	50		0
5	9 2H	S2	110		4
9	5 3H	S-2	100		-2
6	7 2H	S 2	110		4
7	6 2H	S-1	50		0
8	10 2H	S-1	50		0
10	8 2H	S-1	50		0

Board (28) Av. = 0

N-S	E-W	Contract	N-S	E-W	IMP
1	2 4H	W 4	420		-9
2	1 5S	S-1	100		-3
3	4 5Hx	W-2	300		7
4	3 5H	E-2	100		3
5	9 4Sx	S 4	790		13
9	5 4H	W-1	50		2
6	7 5H	W-2	100		3
7	6 5H	W-2	100		3
8	10 4H	W 4	420		-9
10	8 1H	W 3	140		-4

29 ♠A9543
♥3
♦K10
♣KQ943

♠J10 ♠8
♥K5 ♥Q107
♦AJ8 ♦Q965432
♣AJ10752 ♣86

♠KQ762
♥AJ98642
♦7
♣

30 ♠42
♥J108732
♦85
♣1063

♠J8753 ♠A6
♥AQ ♥K
♦A74 ♦KQJ109632
♣842 ♣K7

♠KQ109
♥9654
♦
♣AQJ95

31 ♠AJ8764
♥A109
♦7
♣AQ4

♠KQ32 ♠105
♥J3 ♥KQ8
♦843 ♦K10962
♣J1076 ♣K82

♠9
♥76542
♦AQJ5
♣953

32 ♠A852
♥83
♦109
♣107652

♠K106 ♠J974
♥Q9 ♥AK10752
♦J7652 ♦K3
♣A83 ♣4

♠Q3
♥J64
♦AQ84
♣KQJ9

Board (29) Av. = 1340

N-S	E-W	Contract	N-S	E-W	IMP
1	2 6S	N 6	1430		3
2	1 6S	N 6	1430		3
3	4 6S	N 6	1430		3
4	3 5S	N 6	680		-12
5	9 6S	N 6	1430		3
9	5 6S	N 6	1430		3
6	7 6H	N 6	1430		3
7	6 6S	N 6	1430		3
8	10 6S	N 7	1460		3
10	8 5S	N 6	680		-12

Board (30) Av. = -390

N-S	E-W	Contract	N-S	E-W	IMP
1	2 3NT	E 6	490		-3
2	1 Av+				3
3	4 3NT	W 5	460		-2
4	3 3NT	E 6	490		-3
5	9 5D	E 5	400		0
9	5 3NT	W 5	460		-2
6	7 5D	E 5	400		0
7	6 5H	N-2	100		7
8	10 5D	E 5	400		0
10	8 4D	E 5	150		6

Board (31) Av. = -80

N-S	E-W	Contract	N-S	E-W	IMP
1	2 4S	N-1	100		-1
2	1 4H	S-1	100		-1
3	4 3S	N-2	200		-3
4	3 3S	N 3	140		6
5	9 2S	N 2	110		5
9	5 2S	N-1	100		-1
6	7 2S	N 3	140		6
7	6 3S	N-2	200		-3
8	10 2S	N-2	200		-3
10	8 3S	N-2	200		-3

Board (32) Av. = -110

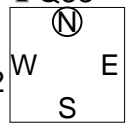
N-S	E-W	Contract	N-S	E-W	IMP
1	2 2H	E 4	170		-2
2	1 3H	E 4	170		-2
3	4 3H	E 4	170		-2
4	3 3C	N-1	50		2
5	9 3S	W-4	400		11
9	5 3S	W-1	100		5
6	7 3H	E 4	170		-2
7	6 3H	E 3	140		-1
8	10 2H	E 3	140		-1
10	8 2H	E 4	170		-2

木村六郎杯 OPEN TEAMS Session 4 Flight B 2007年3月11日(日)

33

♠AJ3
♥AQ8762
♦J
♣Q83

♠862
♥43
♦K108432
♣A4



♠107
♥KJ109
♦A75
♣J976

♠KQ954
♥5
♦Q96
♣K1052

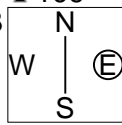
Board (33) Av. = -60

N-S	E-W	Contract	N-S	E-W	IMP
1	2	4S S-1		50	0
2	1	4Hx N-3		500	-10
3	4	3S S-1		50	0
4	3	2H N-1		50	0
5	9	5S S-4		200	-4
9	5	2H N 3	140		5
6	7	3NT S-3		150	-3
7	6	2H N 2	110		5
8	10	2H N-1		50	0
10	8	4S S-1		50	0

34

♠1075
♥8765
♦A983
♣109

♠Q8643
♥J
♦Q72
♣K632



♠K92
♥AQ1032
♦10
♣AQJ5

♠AJ
♥K94
♦KJ654
♣874

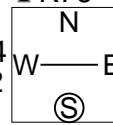
Board (34) Av. = -250

N-S	E-W	Contract	N-S	E-W	IMP
1	2	4C E 4		130	3
2	1	4S W 5		450	-5
3	4	2C E 4		130	3
4	3	2C E 4		130	3
5	9	3S W 3		140	3
9	5	4S W 4		420	-5
6	7	3Dx S-2		500	-6
7	6	3D S-1		100	4
8	10	3D S-2		200	2
10	8	4S W 4		420	-5

35

♠QJ85
♥97
♦KQ87
♣K76

♠72
♥AK64
♦A642
♣1042



♠K63
♥5
♦10953
♣QJ953

♠A1094
♥QJ10832
♦J
♣A8

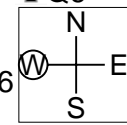
Board (35) Av. = 230

N-S	E-W	Contract	N-S	E-W	IMP
1	2	4S N 4		420	5
2	1	3H S 4		170	-2
3	4	4S N-1		50	-7
4	3	4H N-1		50	-7
5	9	4S N 4		420	5
9	5	2NT N 2		120	-3
6	7	4H N 4		420	5
7	6	4S N-1		50	-7
8	10	4S N 4		420	5
10	8	4S N 4		420	5

36

♠AQJ10
♥A65
♦Q532
♣Q6

♠K32
♥Q72
♦A876
♣J74



♠8764
♥10
♦J104
♣109853

♠95
♥KJ9843
♦K9
♣AK2

Board (36) Av. = 660

N-S	E-W	Contract	N-S	E-W	IMP
1	2	4H N 5		650	0
2	1	5H N 6		680	1
3	4	5H N 5		650	0
4	3	4H N 6		680	1
5	9	4H N 5		650	0
9	5	4H N 5		650	0
6	7	4H N 5		650	0
7	6	5H N 5		650	0
8	10	5H N 5		650	0
10	8	6H N 6	1430		13