

兵庫県知事杯 OPEN TEAMS Session 1 Flight B 2007年10月6日(土)

1

♠ Q9752
♥ 7
♦ 9643
♣ A102

♠ J84
♥ KJ852
♦
♣ KQJ95

W N E S

♠ 10
♥ A643
♦ KJ852
♣ 874

♠ AK63
♥ Q109
♦ AQ107
♣ 63

Board (1) Av: NS=+120

N-S	E-W	Contract	N-S	E-W	IMP
1	10	4S	N 4	420	7
10	1	4Hx	W 5	690	-13
2	8	4H	W 5	450	-11
8	2	3S	S 4	170	2
3	6	3S	S 4	170	2
6	3	3S	N 4	170	2
4	7	4S	S 4	420	7
7	4	2S	S 4	170	2
5	9	4S	N 4	420	7
9	5	4Sx	S-1	100	-6

2

♠ J109842
♥ A52
♦ KQJ2

♠ Q8652
♥ KQ3
♦ J63
♣ 106

W N E S

♠ 97
♥ A75
♦ KQ97
♣ A973

♠ AKJ1043
♥ 6
♦ 1084
♣ 854

Board (2) Av: NS=-130

N-S	E-W	Contract	N-S	E-W	IMP
1	10	3S	S-1	100	1
10	1	2S	S-1	100	1
2	8	2S	S 2	110	6
8	2	2NT	N-3	300	-5
3	6	4H	N-3	300	-5
6	3	2S	S-1	100	1
4	7	2S	N-2	200	-2
7	4	2S	S-2	200	-2
5	9	2S	S-1	100	1
9	5	3D	W-2	100	6

3

♠ Q73
♥ Q754
♦ J762
♣ J6

♠ J10952
♥ 2
♦ A3
♣ 98532

W N E S

♠ A6
♥ A1096
♦ K854
♣ Q107

♠ K84
♥ KJ83
♦ Q109
♣ AK4

Board (3) Av: NS=+110

N-S	E-W	Contract	N-S	E-W	IMP
1	10	1NT	S 1	90	-1
10	1	1NT	S 2	120	0
2	8	1NT	S 3	150	1
8	2	1NT	S 1	90	-1
3	6	1NT	S 3	150	1
6	3	1NT	S 2	120	0
4	7	1NT	S 2	120	0
7	4	1NT	S 1	90	-1
5	9	1NT	S 2	120	0
9	5	1NT	S-1	50	-4

4

♠ AK2
♥ 42
♦ AQJ102
♣ KJ3

♠ 765
♥ 763
♦ 7
♣ 1098765

W N E S

♠ 98
♥ A5
♦ 98643
♣ AQ42

♠ QJ1043
♥ KQJ1098
♦ K5
♣

Board (4) Av: NS=+860

N-S	E-W	Contract	N-S	E-W	IMP
1	10	4H	S 6	680	-5
10	1	6H	S 6	1430	11
2	8	6H	S 6	1430	11
8	2	6S	S 6	1430	11
3	6	6NTxN-1		200	-14
6	3	4H	S 5	650	-5
4	7	6H	S-1	100	-14
7	4	6H	S 6	1430	11
5	9	4S	S 6	680	-5
9	5	4S	S 6	680	-5

5

♠ K92
♥ K1084
♦ 54
♣ A965

♠ QJ75
♥ J97
♦ Q732
♣ K10

W N E S

♠ A10843
♥ A52
♦ 9
♣ J742

♠ 6
♥ Q63
♦ AKJ1086
♣ Q83

Board (5) Av: NS=-60

N-S	E-W	Contract	N-S	E-W	IMP
1	10	1H	N 3	140	5
10	1	2S	E-1	50	3
2	8	3D	S 3	110	5
8	2	3NT	N-3	300	-6
3	6	2NT	N-1	100	-1
6	3	3S	E-1	50	3
4	7	2D	S-1	100	-1
7	4	2NT	N-1	100	-1
5	9	2Sx	E 2	470	-9
9	5	2S	E 2	110	-2

6

♠ J63
♥ AQ3
♦ AJ10632
♣ J

♠ A972
♥ 642
♦ KQ5
♣ 764

W N E S

♠ KQ10854
♥ 10985
♦
♣ Q102

♠
♥ KJ7
♦ 9874
♣ AK9853

Board (6) Av: NS=+330

N-S	E-W	Contract	N-S	E-W	IMP
1	10	5D	N 6	420	3
10	1	3S	E-2	200	-4
2	8	5D	N 5	400	2
8	2	5D	N 5	400	2
3	6	4D	N 6	170	-4
6	3	4D	N 5	150	-5
4	7	5D	N 6	420	3
7	4	5D	N 6	420	3
5	9	5D	N 6	420	3
9	5	3S	W-2	200	-4

7

♠ Q1043
♥ AQJ
♦ K65
♣ 963

♠ A97
♥ 86
♦ AJ10987
♣ Q4

W N E S

♠ K86
♥ K107432
♦ 43
♣ K8

♠ J52
♥ 95
♦ Q2
♣ AJ10752

Board (7) Av: NS=+10

N-S	E-W	Contract	N-S	E-W	IMP
1	10	4C	N 4	130	3
10	1	3C	N-1	100	-3
2	8	4H	E-2	200	5
8	2	Passout			0
3	6	3NT	N-3	300	-7
6	3	3H	E-2	200	5
4	7	3D	W 3	110	-3
7	4	4H	E-2	200	5
5	9	2H	E 2	110	-3
9	5	2H	E 3	140	-4

8

♠ K3
♥ K74
♦ Q10732
♣ 1073

♠ J10965
♥ 865
♦ J84
♣ 98

W N E S

♠ 742
♥ J109
♦ A96
♣ QJ52

♠ AQ8
♥ AQ32
♦ K5
♣ AK64

Board (8) Av: NS=+470

N-S	E-W	Contract	N-S	E-W	IMP
1	10	3NT	S 6	490	1
10	1	3NT	S 6	490	1
2	8	3NT	S 6	490	1
8	2	3NT	S 5	460	0
3	6	3NT	S 5	460	0
6	3	3NT	S 5	460	0
4	7	6NT	S 6	990	11
7	4	3NT	S 6	490	1
5	9	5H	S 5	450	-1
9	5	3NT	S 4	430	-1

9

♠ 73
♥ Q8752
♦ AQ
♣ A1086

♠ Q842
♥ AK6
♦ J53
♣ 543

W N E S

♠ J965
♥ J93
♦ 1094
♣ KQ2

♠ AK10
♥ 104
♦ K8762
♣ J97

Board (9) Av: NS=+120

N-S	E-W	Contract	N-S	E-W	IMP
1	10	2NT	S 2	120	0
10	1	2NT	S 3	150	1
2	8	2NT	S 2	120	0
8	2	2NT	S 2	120	0
3	6	2NT	S 2	120	0
6	3	2NT	S 2	120	0
4	7	2NT	S 2	120	0
7	4	2NT	S 2	120	0
5	9	2NT	S 2	120	0
9	5	2NT	S 2	120	0

兵庫県知事杯 OPEN TEAMS Session 1 Flight B 2007年10月6日(土)

10

♠ J105
♥ 987
♦ Q432
♣ Q75

♠ A
♥ K653
♦ 986
♣ KJ432

♠ KQ
♥ AJ1042
♦ K7
♣ A1086

♠ 9876432
♥ Q
♦ AJ105
♣ 9

Board (10) Av: NS=-650

N-S	E-W	Contract	N-S	E-W	IMP
1	10	4H	W 5	650	0
10	1	5H	W 5	650	0
2	8	5H	W 5	650	0
8	2	4H	W 6	680	-1
3	6	4H	W 5	650	0
6	3	4H	W 5	650	0
4	7	4H	W 5	650	0
7	4	4H	W 5	650	0
5	9	4H	W 5	650	0
9	5	4H	W 5	650	0

11

♠ A7
♥ J94
♦ 10876
♣ A953

♠ K1042
♥ AQ6
♦ KJ4
♣ Q107

♠ QJ9853
♥ 10752
♦ 9
♣ 84

♠ 6
♥ K83
♦ AQ532
♣ KJ62

Board (11) Av: NS=+90

N-S	E-W	Contract	N-S	E-W	IMP
1	10	3D	S 4	130	1
10	1	4D	S-1	50	-4
2	8	2D	S 4	130	1
8	2	3S	W-2	100	0
3	6	4S	W-2	100	0
6	3	3D	S 4	130	1
4	7	4D	S 4	130	1
7	4	2S	W 2	110	-5
5	9	3D	S 5	150	2
9	5	3NT	E-1	50	-1

12

♠ Q9764
♥ 952
♦ QJ52
♣ 5

♠ AJ82
♥ J64
♦ 4
♣ AKQ76

♠ K103
♥ A1073
♦ A108
♣ 983

♠ 5
♥ KQ8
♦ K9763
♣ J1042

Board (12) Av: NS=-300

N-S	E-W	Contract	N-S	E-W	IMP
1	10	3NT	W-1	50	8
10	1	3NT	W 5	460	-4
2	8	3NT	W 4	430	-4
8	2	3NT	W-1	50	8
3	6	3NT	W-1	50	8
6	3	3NT	W 3	400	-3
4	7	2S	N-4	400	-3
7	4	3NT	W 4	430	-4
5	9	3NT	W 5	460	-4
9	5	3NT	W 3	400	-3

13

♠ 5
♥ AKJ1095
♦ 10753
♣ 82

♠ A98
♥ 842
♦ J2
♣ AQ753

♠ QJ43
♥ Q6
♦ Q96
♣ KJ94

♠ K10762
♥ 73
♦ AK84
♣ 106

Board (13) Av: NS=+170

N-S	E-W	Contract	N-S	E-W	IMP
1	10	4S	W-4	400	6
10	1	3C	E-1	100	-2
2	8	3C	E-1	100	-2
8	2	2H	N 4	170	0
3	6	2H	N 4	170	0
6	3	3C	E-1	100	-2
4	7	2H	N 4	170	0
7	4	3C	E 3	110	-7
5	9	2H	N 4	170	0
9	5	4C	E-4	400	6

14

♠ J975
♥ 863
♦ KJ
♣ KQ107

♠ 62
♥ 74
♦ AQ763
♣ A986

♠ AK8
♥ A1095
♦ 108
♣ J542

♠ Q1043
♥ KQJ2
♦ 9542
♣ 3

Board (14) Av: NS=-80

N-S	E-W	Contract	N-S	E-W	IMP
1	10	2NT	W-2	100	5
10	1	2NT	W 2	120	-1
2	8	2S	N-1	50	1
8	2	3C	W 3	110	-1
3	6	1NT	W 2	120	-1
6	3	2NT	W-1	50	4
4	7	2C	W 2	90	0
7	4	1NT	W 1	90	0
5	9	2NT	W 3	150	-2
9	5	2C	W 2	90	0

15

♠ K8
♥ Q1043
♦ AJ83
♣ J64

♠ Q63
♥ J87
♦ KQ106
♣ A82

♠ J7
♥ AK965
♦ 52
♣ 10953

♠ A109542
♥ 2
♦ 974
♣ KQ7

Board (15) Av: NS=+100

N-S	E-W	Contract	N-S	E-W	IMP
1	10	2S	S 2	110	0
10	1	3S	S-1	100	-5
2	8	3H	W-3	150	2
8	2	2S	S 2	110	0
3	6	Passout			-3
6	3	3H	W-2	100	0
4	7	2S	S 2	110	0
7	4	2S	S 2	110	0
5	9	2S	S 2	110	0
9	5	2S	S 2	110	0

16

♠ AKJ1083
♥ 532
♦ 85
♣ 94

♠ Q4
♥ AK98764
♦
♣ AK105

♠ 952
♥
♦ AKQJ10764
♣ J7

♠ 76
♥ QJ10
♦ 932
♣ Q8632

Board (16) Av: NS=-170

N-S	E-W	Contract	N-S	E-W	IMP
1	10	5D	W-1	100	7
10	1	5H	E-1	100	7
2	8	4H	E 4	620	-10
8	2	5D	W-1	100	7
3	6	4H	E 4	620	-10
6	3	4H	E 4	620	-10
4	7	5D	W 5	600	-10
7	4	5D	W-1	100	7
5	9	4H	E-1	100	7
9	5	6D	E-2	200	9

17

♠ J
♥ 10843
♦ AQJ9763
♣ Q

♠ 108432
♥ A97
♦
♣ J9763

♠ 75
♥ QJ52
♦ K1052
♣ AK2

♠ AKQ96
♥ K6
♦ 84
♣ 10854

Board (17) Av: NS=+80

N-S	E-W	Contract	N-S	E-W	IMP
1	10	3NT	N-2	100	-5
10	1	3NT	S-2	100	-5
2	8	2D	N 5	150	2
8	2	2D	N 3	110	1
3	6	2D	N 4	130	2
6	3	3D	N 5	150	2
4	7	2D	N 4	130	2
7	4	3D	N 5	150	2
5	9	2D	N 4	130	2
9	5	3NT	S-1	50	-4

18

♠ J54
♥ J642
♦ AJ974
♣ 8

♠ KQ9
♥ K8
♦ 1083
♣ QJ1032

♠ A62
♥ AQ1095
♦ Q2
♣ 975

♠ 10873
♥ 73
♦ K65
♣ AK64

Board (18) Av: NS=-10

N-S	E-W	Contract	N-S	E-W	IMP
1	10	2NT	E-1	50	2
10	1	3NT	E 5	460	-10
2	8	2NT	E 2	120	-3
8	2	2NT	E-3	150	4
3	6	2H	W 2	110	-3
6	3	1NT	E 5	210	-5
4	7	2NT	E-1	50	2
7	4	2NT	E-1	50	2
5	9	2H	W-2	100	3
9	5	3NT	E-2	100	3

兵庫県知事杯 OPEN TEAMS Session 1 Flight B 2007年10月6日(土)

19

♠ K93
♥ 6432
♦ 1095
♣ Q104

♠ A542
♥ K9
♦ 874
♣ 7532

N
W—E
S

♠ QJ1086
♥
♦ QJ6
♣ AKJ96

♠ 7
♥ AQJ10875
♦ AK32
♣ 8

Board (19) Av: NS=+50

N-S	E-W	Contract	N-S	E-W	IMP
1	7 5H	S-2	100		-4
7	1 5H	S-2	100		-4
2	9 4H	S 4	420		9
9	2 4H	S 4	420		9
3	5 5H	S-1	50		-3
5	3 5H	S-2	100		-4
4	10 4H	S-1	50		-3
10	4 5H	S-2	100		-4
6	8 4H	S-1	50		-3
8	6 4H	S 4	420		9

20

♠ Q109
♥ AJ9
♦ KQ863
♣ K8

♠ AJ
♥ KQ876
♦ A2
♣ A752

N
W—E
S

♠ K43
♥ 1053
♦ J975
♣ J109

♠ 87652
♥ 42
♦ 104
♣ Q643

Board (20) Av: NS=-90

N-S	E-W	Contract	N-S	E-W	IMP
1	7 2S	N-1	100		0
7	1 2H	W 3	140		-2
2	9 3S	S-2	200		-3
9	2 2S	N-1	100		0
3	5 3H	W 3	140		-2
5	3 2H	W-1	100		5
4	10 2H	W 2	110		-1
10	4 4H	W-1	100		5
6	8 3H	W 3	140		-2
8	6 2S	N-1	100		0

21

♠ AK643
♥ KQ6
♦ 63
♣ 1076

♠ J
♥ AJ743
♦ KJ85
♣ J93

N
W—E
S

♠ 75
♥ 1098
♦ Q1097
♣ AK82

♠ Q10982
♥ 52
♦ A42
♣ Q54

Board (21) Av: NS=-20

N-S	E-W	Contract	N-S	E-W	IMP
1	7 2S	N 3	140		4
7	1 4S	N-1	100		-2
2	9 4S	N-1	100		-2
9	2 4S	N-1	100		-2
3	5 4Sx	N-1	200		-5
5	3 4S	N-1	100		-2
4	10 3S	N 3	140		4
10	4 3S	N 3	140		4
6	8 4H	W-2	100		3
8	6 4S	N-1	100		-2

22

♠ 842
♥ QJ108
♦ AK
♣ Q1098

♠ 9
♥ K9654
♦ J96
♣ 6532

N
W—E
S

♠ Q10753
♥ 2
♦ 105432
♣ KJ

♠ AKJ6
♥ A73
♦ Q87
♣ A74

Board (22) Av: NS=+390

N-S	E-W	Contract	N-S	E-W	IMP
1	7 3NT	S 5	460		2
7	1 3NT	S 5	460		2
2	9 6C	S-1	50		-10
9	2 3NT	S 4	430		1
3	5 5C	S-1	50		-10
5	3 3NT	S 5	460		2
4	10 3NT	S 5	460		2
10	4 3NT	S 5	460		2
6	8 3NT	S 5	460		2
8	6 3NT	N 5	460		2

23

♠
♥ A97542
♦ J6
♣ 107643

♠ 83
♥ KQ1063
♦ K52
♣ QJ9

N
W—E
S

♠ K109
♥ J8
♦ AQ98
♣ AK85

♠ AQJ76542
♥
♦ 10743
♣ 2

Board (23) Av: NS=-380

N-S	E-W	Contract	N-S	E-W	IMP
1	7 4S	S-2	200		5
7	1 5H	W-2	200		11
2	9 4Sx	S-2	500		-3
9	2 4S	S-2	200		5
3	5 3Sx	S-2	500		-3
5	3 4Sx	S-2	500		-3
4	10 4Sx	S-2	500		-3
10	4 3NT	E 4	630		-6
6	8 3S	S-1	100		7
8	6 4Sx	S-2	500		-3

24

♠ K52
♥ Q5
♦ AJ6
♣ AKQ84

♠ Q87
♥ J42
♦ Q9
♣ J10763

N
W—E
S

♠ J943
♥ K73
♦ K10874
♣ 5

♠ A106
♥ A10986
♦ 532
♣ 92

Board (24) Av: NS=+220

N-S	E-W	Contract	N-S	E-W	IMP
1	7 3NT	N 3	400		5
7	1 3NT	N-2	100		-8
2	9 3NT	N 3	400		5
9	2 3NT	N-2	100		-8
3	5 3NT	N 4	430		5
5	3 3NT	N 4	430		5
4	10 3NT	N 3	400		5
10	4 3NT	N-3	150		-9
6	8 3NT	N-2	100		-8
8	6 3NT	N 3	400		5

25

♠ 7654
♥ 7532
♦ 4
♣ J1075

♠ KQ982
♥ AQ
♦ 107
♣ AK83

N
W—E
S

♠ AJ10
♥ KJ8
♦ AK963
♣ 42

♠ 3
♥ 10964
♦ QJ852
♣ Q96

Board (25) Av: NS=-1540

N-S	E-W	Contract	N-S	E-W	IMP
1	7 7S	E 7	2210		-12
7	1 6H	W-5	500		19
2	9 6S	W 7	1460		2
9	2 7S	E 7	2210		-12
3	5 6S	E 6	1430		3
5	3 6S	E 6	1430		3
4	10 6NT	W 6	1440		3
10	4 6NT	E 7	1470		2
6	8 6S	E 6	1430		3
8	6 6S	E 7	1460		2

26

♠ J1054
♥ K5
♦ J984
♣ 986

♠ 32
♥ J108632
♦ 53
♣ J54

N
W—E
S

♠ K97
♥ AQ97
♦ 10
♣ AQ1073

♠ AQ86
♥ 4
♦ AKQ762
♣ K2

Board (26) Av: NS=+620

N-S	E-W	Contract	N-S	E-W	IMP
1	7 4S	N 6	680		2
7	1 5Hx	E-3	800		5
2	9 4S	N 4	620		0
9	2 3S	N 6	230		-9
3	5 4S	N 6	680		2
5	3 2S	N 4	170		-10
4	10 5Hx	W-3	800		5
10	4 4S	N 4	620		0
6	8 4S	N 5	650		1
8	6 4S	N 5	650		1

27

♠ J8
♥ AQ97
♦ 10842
♣ J108

♠ 3
♥ KJ53
♦ AQ753
♣ KQ6

N
W—E
S

♠ A652
♥ 10642
♦ K6
♣ 743

♠ KQ10974
♥ 8
♦ J9
♣ A952

Board (27) Av: NS=+40

N-S	E-W	Contract	N-S	E-W	IMP
1	7 3H	E 3	140		-5
7	1 3H	E 4	170		-5
2	9 4Hx	W-1	100		2
9	2 4H	E-1	50		0
3	5 3H	W-1	50		0
5	3 2S	S 2	110		2
4	10 4H	E-2	100		2
10	4 2S	S 3	140		3
6	8 4H	E-2	100		2
8	6 2S	S-1	50		-3

28

♠65
♥KJ
♦Q1064
♣AQJ106

♠KQJ98
♥8764
♦K85
♣2

N E
W S

♠432
♥A1093
♦AJ3
♣K53

♠A107
♥Q52
♦972
♣9874

Board (28) Av: NS=-150

N-S	E-W	Contract	N-S	E-W	IMP
1	7	3C	N-1	100	2
7	1	3S	W 3	140	0
2	9	2S	W 3	140	0
9	2	2S	W 3	140	0
3	5	3D	S-4	400	-6
5	3	3S	W 3	140	0
4	10	2S	W 3	140	0
10	4	2S	W 3	140	0
6	8	3NT	N-2	200	-2
8	6	2S	W 4	170	-1

29

♠AQ6542
♥5
♦A6
♣KQ65

♠109
♥AQ1083
♦Q9852
♣9

N E
W S

♠873
♥KJ42
♦K73
♣874

♠KJ
♥976
♦J104
♣AJ1032

Board (29) Av: NS=+680

N-S	E-W	Contract	N-S	E-W	IMP
1	7	4S	N 6	680	0
7	1	4S	N 6	680	0
2	9	4S	N 6	680	0
9	2	4S	N 6	680	0
3	5	4S	N 6	680	0
5	3	4S	N 6	680	0
4	10	4S	N 6	680	0
10	4	4S	N 6	680	0
6	8	4S	N 6	680	0
8	6	4S	N 6	680	0

30

♠Q74
♥8654
♦5
♣KJ976

♠AK96
♥AJ
♦QJ62
♣Q104

N E
W S

♠532
♥103
♦10743
♣A532

♠J108
♥KQ972
♦AK98
♣8

Board (30) Av: NS=+150

N-S	E-W	Contract	N-S	E-W	IMP
1	7	3C	E-4	200	2
7	1	3H	S 3	140	0
2	9	3H	S 3	140	0
9	2	4C	E-6	300	4
3	5	3H	S 3	140	0
5	3	3H	S 3	140	0
4	10	2H	S 3	140	0
10	4	2H	S 3	140	0
6	8	3S	E-3	150	0
8	6	2H	S 3	140	0

31

♠KQJ107
♥A74
♦Q2
♣QJ6

♠A98
♥J3
♦A98754
♣85

N E
W S

♠642
♥KQ8
♦K63
♣K1094

♠53
♥109652
♦J10
♣A732

Board (31) Av: NS=+20

N-S	E-W	Contract	N-S	E-W	IMP
1	7	1NT	S-3	300	-8
7	1	2D	W 3	110	-4
2	9	2S	N 2	110	3
9	2	3D	W-1	50	1
3	5	2S	N 2	110	3
5	3	3D	W-1	50	1
4	10	2D	W 2	90	-3
10	4	3D	W-1	50	1
6	8	3D	W-1	50	1
8	6	2D	W-1	50	1

32

♠AJ105
♥985
♦1075
♣QJ7

♠9
♥AQJ63
♦AJ62
♣A83

N E
W S

♠K32
♥K1074
♦83
♣K1052

♠Q8764
♥2
♦KQ94
♣964

Board (32) Av: NS=-630

N-S	E-W	Contract	N-S	E-W	IMP
1	7	4Sx	S-3	500	4
7	1	4H	W 5	650	-1
2	9	5H	W 5	650	-1
9	2	4H	W 5	650	-1
3	5	3H	W 5	200	10
5	3	4H	W 4	620	0
4	10	4H	W 5	650	-1
10	4	4H	W 7	710	-2
6	8	4H	W 5	650	-1
8	6	4H	W 5	650	-1

33

♠J432
♥K75
♦A1076
♣J5

♠Q5
♥J1094
♦K32
♣A986

N E
W S

♠K10976
♥AQ62
♦Q
♣Q102

♠A8
♥83
♦J9854
♣K743

Board (33) Av: NS=-190

N-S	E-W	Contract	N-S	E-W	IMP
1	7	3H	E 5	200	0
7	1	3H	E 4	170	1
2	9	3H	E 5	200	0
9	2	3H	E 3	140	2
3	5	3H	E 5	200	0
5	3	4H	E 5	450	-6
4	10	3H	E 5	200	0
10	4	3H	E 4	170	1
6	8	3H	E 3	140	2
8	6	3H	E 5	200	0

34

♠J108
♥A4
♦752
♣Q10852

♠A7
♥Q9632
♦KJ943
♣7

N E
W S

♠9432
♥J105
♦Q86
♣K64

♠KQ65
♥K87
♦A10
♣AJ93

Board (34) Av: NS=+190

N-S	E-W	Contract	N-S	E-W	IMP
1	7	1NT	S 5	210	1
7	1	3H	W 3	140	-8
2	9	3H	W-3	150	-1
9	2	1NT	S 5	210	1
3	5	1NT	S 3	150	-1
5	3	3NT	S 3	600	9
4	10	1NT	S 6	240	2
10	4	1NT	S 1	90	-3
6	8	1NT	S 5	210	1
8	6	1NT	S 6	240	2

35

♠A10642
♥AQ4
♣85432

♠Q1084
♥Q
♦KJ10532
♣Q10

N E
W S

♠7652
♥KJ853
♦9
♣AK7

♠AKJ93
♥97
♦876
♣J96

Board (35) Av: NS=-100

N-S	E-W	Contract	N-S	E-W	IMP
1	7	2H	N-2	100	0
7	1	2S	S-2	100	0
2	9	2H	N-3	150	-2
9	2	2D	E 2	90	0
3	5	3C	N-1	50	2
5	3	2H	N-2	100	0
4	10	2D	W 2	90	0
10	4	2S	S-2	100	0
6	8	3Hx	N-2	300	-5
8	6	2S	S-1	50	2

36

♠AKQ53
♥3
♦A742
♣865

♠J4
♥AKJ1096
♦98
♣1092

N E
W S

♠9
♥Q542
♦KQ105
♣KQJ7

♠108762
♥87
♦J63
♣A43

Board (36) Av: NS=-100

N-S	E-W	Contract	N-S	E-W	IMP
1	7	4S	N-2	200	-3
7	1	3S	N 4	170	7
2	9	4S	N-1	100	0
9	2	4S	N-1	100	0
3	5	4S	N-2	200	-3
5	3	4S	N-1	100	0
4	10	5H	W-1	100	5
10	4	4S	N-1	100	0
6	8	5S	N-2	200	-3
8	6	4S	N-1	100	0

兵庫県知事杯 OPEN TEAMS Session 2 Flight B 2007年10月6日(土)

1

♠KQ103
♥J4
♦J762
♣A76

♠762
♥10872
♦953
♣QJ9

♠J5
♥KQ963
♦AQ8
♣1085

♠A984
♥A5
♦K104
♣K432

Board (1) Av: NS=+330

N-S	E-W	Contract	N-S	E-W	IMP
1	9 4S	N 4	420		3
9	1 4S	S-1		50	-9
2	5 4S	N 5	450		3
5	2 2S	N 4	170		-4
3	7 4S	N 4	420		3
7	3 4S	N 4	420		3
4	6 4S	S 4	420		3
6	4 2S	N 4	170		-4
8	10 4S	N 4	420		3
10	8 2S	S 4	170		-4

2

♠K964
♥J97
♦Q10943
♣6

♠QJ5
♥Q8
♦852
♣KQ1042

♠7
♥AK1032
♦AJ7
♣AJ95

♠A10832
♥654
♦K6
♣873

Board (2) Av: NS=-420

N-S	E-W	Contract	N-S	E-W	IMP
1	9 3NT	W 5	460		-1
9	1 3NT	W 5	460		-1
2	5 3H	E 5	200		6
5	2 5C	E 6	420		0
3	7 3NT	W 5	460		-1
7	3 3NT	W 5	460		-1
4	6 3NT	W 5	460		-1
6	4 3C	E 6	170		6
8	10 5C	E 6	420		0
10	8 3NT	W 5	460		-1

3

♠A1074
♥AJ53
♦843
♣J8

♠Q92
♥Q10982
♦Q97
♣A6

♠863
♥K64
♦KJ65
♣1073

♠KJ5
♥7
♦A102
♣KQ9542

Board (3) Av: NS=+230

N-S	E-W	Contract	N-S	E-W	IMP
1	9 3NT	N 3	400		5
9	1 2NT	N 3	150		-2
2	5 2C	S 5	150		-2
5	2 3NT	N 4	430		5
3	7 3NT	N 4	430		5
7	3 3NT	N-1		50	-7
4	6 3C	N 5	150		-2
6	4 3NT	N 5	460		6
8	10 1NT	S 4	180		-2
10	8 3NT	N-1		50	-7

4

♠AKQJ103
♥Q3
♦102
♣987

♠9875
♥KJ4
♦AQ87
♣Q6

♠64
♥A9865
♦K6
♣K542

♠2
♥1072
♦J9543
♣AJ103

Board (4) Av: NS=+10

N-S	E-W	Contract	N-S	E-W	IMP
1	9 4H	E-1	100		3
9	1 3H	E 3		140	-4
2	5 4H	E-1	100		3
5	2 3H	E-1	100		3
3	7 3H	E-1	100		3
7	3 3H	E 3		140	-4
4	6 4H	W-1	100		3
6	4 3H	E 3		140	-4
8	10 3H	E 3		140	-4
10	8 4H	E-1	100		3

5

♠3
♥103
♦AK107
♣KQ9642

♠Q10
♥J742
♦QJ52
♣J75

♠AJ9865
♥AQ6
♦96
♣A3

♠K742
♥K985
♦843
♣108

Board (5) Av: NS=0

N-S	E-W	Contract	N-S	E-W	IMP
1	9 2S	E-1	50		2
9	1 2S	E 2		110	-3
2	5 4S	E-3	150		4
5	2 3S	E-1	50		2
3	7 2S	E 3		140	-4
7	3 2S	E 2		110	-3
4	6 4S	E-2	100		3
6	4 2S	E 2		110	-3
8	10 3S	E-2	100		3
10	8 2S	E-1	50		2

6

♠A
♥AQ
♦4
♣AKQJ98765

♠J102
♥K5
♦KQJ10865
♣4

♠K943
♥1097643
♦2
♣32

♠Q8765
♥J82
♦A973
♣10

Board (6) Av: NS=+810

N-S	E-W	Contract	N-S	E-W	IMP
1	9 5C	N 7	440		-9
9	1 5C	N 7	440		-9
2	5 6C	N 6	920		3
5	2 6NT	N 6	990		5
3	7 5C	N 7	440		-9
7	3 6C	N 6	920		3
4	6 6C	N 7	940		4
6	4 6C	N 7	940		4
8	10 6C	N 7	940		4
10	8 6C	N 7	940		4

7

♠K8
♥A972
♦Q10953
♣KJ

♠A753
♥J108653
♦8
♣73

♠Q1064
♥K4
♦KJ74
♣A95

♠J92
♥Q
♦A62
♣Q108642

Board (7) Av: NS=+130

N-S	E-W	Contract	N-S	E-W	IMP
1	9 2D	N 3	110		-1
9	1 1NT	S 1	90		-1
2	5 3C	S 4	130		0
5	2 1NT	S 2	120		0
3	7 1NT	S 2	120		0
7	3 4H	E-2	200		2
4	6 2NT	N 3	150		1
6	4 1NT	S 2	120		0
8	10 1NT	S 2	120		0
10	8 3H	W-3	300		5

8

♠95
♥62
♦K1086
♣K9653

♠KQ642
♥K873
♦J2
♣A2

♠1083
♥AQ109
♦Q75
♣J87

♠AJ7
♥J54
♦A943
♣Q104

Board (8) Av: NS=-110

N-S	E-W	Contract	N-S	E-W	IMP
1	9 2S	W 3	140		-1
9	1 2S	W 3	140		-1
2	5 2S	W 2	110		0
5	2 2S	W 3	140		-1
3	7 2NT	N-1		50	2
7	3 3H	W 3	140		-1
4	6 2S	W 2	110		0
6	4 3C	N-1		50	2
8	10 3S	W-1		50	4
10	8 3D	S-2		100	0

9

♠6
♥Q72
♦AKQ32
♣AQ74

♠QJ875
♥K8
♦J96
♣KJ3

♠AK102
♥A64
♦1075
♣982

♠943
♥J10953
♦84
♣1065

Board (9) Av: NS=-10

N-S	E-W	Contract	N-S	E-W	IMP
1	9 3S	W-2	200		5
9	1 3S	W-1	100		3
2	5 2S	W 2		110	-3
5	2 3S	W-1	100		3
3	7 3S	W-1	100		3
7	3 3S	W 3		140	-4
4	6 2S	W 2		110	-3
6	4 2S	W 2		110	-3
8	10 3S	W-1		100	3
10	8 2S	W 2		110	-3

兵庫県知事杯 OPEN TEAMS Session 2 Flight B 2007年10月6日(土)

10

♠ K10
♥ K96
♦ J109
♣ AKQ108

♠ AQ8753
♥ 532
♦ K75
♣ 6

N
W — E
S

♠ 64
♥ J1084
♦ Q863
♣ 952

♠ J92
♥ AQ7
♦ A42
♣ J743

Board (10) Av: NS=+630

N-S	E-W	Contract	N-S	E-W	IMP
1	9	3NT N 4	630		0
9	1	3NT N 4	630		0
2	5	3NT N 4	630		0
5	2	3NT N 4	630		0
3	7	3NT N 4	630		0
7	3	3C N 5	150		-10
4	6	5C S 5	600		-1
6	4	3NT N 5	660		1
8	10	3NT N 4	630		0
10	8	3NT N 4	630		0

11

♠ A75432
♥ 952
♦ 2
♣ K32

♠ 109
♥ QJ8764
♦ 108
♣ Q97

N
W — E
S

♠ KJ
♥ 10
♦ KJ96
♣ AJ10854

♠ Q86
♥ AK3
♦ AQ7543
♣ 6

Board (11) Av: NS=+430

N-S	E-W	Contract	N-S	E-W	IMP
1	9	4S N 4	420		0
9	1	4S N 4	420		0
2	5	4S N 4	420		0
5	2	4S N 4	420		0
3	7	4S N 5	450		1
7	3	4S N 4	420		0
4	6	4S N 4	420		0
6	4	3S N 5	200		-6
8	10	4S N 5	450		1
10	8	5S N 5	450		1

12

♠ 6
♥ Q875
♦ AJ87
♣ K763

♠ K83
♥ AKJ9
♦ K965
♣ Q2

N
W — E
S

♠ AQ10542
♥ 3
♦ Q42
♣ J109

♠ J97
♥ 10642
♦ 103
♣ A854

Board (12) Av: NS=-420

N-S	E-W	Contract	N-S	E-W	IMP
1	9	4S W 4	420		0
9	1	4S W 4	420		0
2	5	4S W 4	420		0
5	2	4S W 4	420		0
3	7	4S W 5	450		-1
7	3	4S W 4	420		0
4	6	4S W 5	450		-1
6	4	4S W 4	420		0
8	10	4S W 4	420		0
10	8	4S W 4	420		0

13

♠ A
♥ J53
♦ AKJ1053
♣ 875

♠ QJ1084
♥ AK10
♦ 2
♣ AQ93

N
W — E
S

♠ K76532
♥ Q92
♦ 4
♣ 642

♠ 9
♥ 8764
♦ Q9876
♣ KJ10

Board (13) Av: NS=-460

N-S	E-W	Contract	N-S	E-W	IMP
1	9	5S W-1	100		11
9	1	3S W 5	200		6
2	5	3S E 4	170		7
5	2	4S W 4	620		-4
3	7	4S W 4	620		-4
7	3	4S W 4	620		-4
4	6	4D N-2	200		6
6	4	4S W 4	620		-4
8	10	4S W 5	650		-5
10	8	4S W 4	620		-4

14

♠ AQ103
♥ A942
♦ Q4
♣ 732

♠ K75
♥ QJ53
♦ J3
♣ QJ65

N
W — E
S

♠ 962
♥ 1076
♦ 10987
♣ AK10

♠ J84
♥ K8
♦ AK652
♣ 984

Board (14) Av: NS=+130

N-S	E-W	Contract	N-S	E-W	IMP
1	9	3NT N 3	400		7
9	1	2NT N 2	120		0
2	5	2NT N 3	150		1
5	2	2NT N 2	120		0
3	7	2NT N 3	150		1
7	3	2NT N 3	150		1
4	6	Passout			-4
6	4	3D S-1		50	-5
8	10	2NT N 4	180		2
10	8	2S N 3	140		0

15

♠ AQJ874
♥ J106
♦ Q3
♣ Q7

♠ K95
♥ 97
♦ A2
♣ J106542

N
W — E
S

♠ 1062
♥ KQ832
♦ 9865
♣ K

♠ 3
♥ A54
♦ KJ1074
♣ A983

Board (15) Av: NS=+210

N-S	E-W	Contract	N-S	E-W	IMP
1	9	3NT S 3	600		9
9	1	4S N-2	200		-9
2	5	3S N 4	170		-1
5	2	3NT S-1	100		-7
3	7	3NT S 3	600		9
7	3	3NT S-1	100		-7
4	6	3NT S 3	600		9
6	4	3S N 3	140		-2
8	10	4S N 4	620		9
10	8	4S N-2	200		-9

16

♠ Q10954
♥ QJ732
♦ 4
♣ 76

♠ 863
♥ AK4
♦ KQ86
♣ A94

N
W — E
S

♠ K
♥ 965
♦ J10532
♣ 10852

♠ AJ72
♥ 108
♦ A97
♣ KQJ3

Board (16) Av: NS=+140

N-S	E-W	Contract	N-S	E-W	IMP
1	9	2S S 4	170		1
9	1	3S S 4	170		1
2	5	3D E 3	110		-6
5	2	1NT W-2	200		2
3	7	3S S 3	140		0
7	3	1NT W 1	90		-6
4	6	4S S 4	420		7
6	4	4S S 4	420		7
8	10	1NT W-2	200		2
10	8	1NT W 1	90		-6

17

♠ J943
♥ KJ43
♦ A105
♣ 73

♠ K10765
♥ 109
♦ KQ862
♣ 10

N
W — E
S

♠ AQ
♥ 872
♦ J3
♣ KJ9852

♠ 82
♥ AQ65
♦ 974
♣ AQ64

Board (17) Av: NS=+50

N-S	E-W	Contract	N-S	E-W	IMP
1	9	3H S-1	50		-3
9	1	2S W-1	50		0
2	5	2S W 2	110		-4
5	2	3C E-2	100		2
3	7	2H N 2	110		2
7	3	2S W 2	110		-4
4	6	3Cx E-1	100		2
6	4	3S W-2	100		2
8	10	2H N 2	110		2
10	8	3H N 3	140		3

18

♠ K8652
♥ 2
♦ Q963
♣ J64

♠ J
♥ AK10954
♦ 108
♣ Q1083

N
W — E
S

♠ AQ1097
♥ Q76
♦ KJ5
♣ A5

♠ 43
♥ J83
♦ A742
♣ K972

Board (18) Av: NS=-450

N-S	E-W	Contract	N-S	E-W	IMP
1	9	4H W 4	420		1
9	1	4H W 5	450		0
2	5	4H W 5	450		0
5	2	4H W 6	480		-1
3	7	4H W 4	420		1
7	3	5H W 5	450		0
4	6	4H W 5	450		0
6	4	3NT W 4	430		1
8	10	4H E 6	480		-1
10	8	4H W 5	450		0

兵庫県知事杯 OPEN TEAMS Session 3 Flight B 2007年10月7日(日)

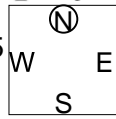
1

♠K865
♥Q
♦QJ832
♣K73

♠A743
♥42
♦764
♣9854

♠Q102
♥AKJ73
♦95
♣J102

♠J9
♥109865
♦AK10
♣AQ6



Board (1) Av: NS=+30

N-S	E-W	Contract	N-S	E-W	IMP
1	6	2S	N 2	110	2
6	1	2H	S 2	110	2
2	10	2C	E-1	50	1
10	2	2NT	S-1	50	-2
3	8	2NT	S-1	50	-2
8	3	2NT	S 2	120	3
4	9	2S	N-1	50	-2
9	4	2NT	S-1	50	-2
5	7	1S	N 1	80	2
7	5	2NT	W-1	50	1

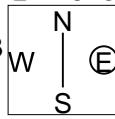
2

♠842
♥J9
♦A103
♣A7643

♠A103
♥104
♦J65
♣QJ1085

♠K75
♥A652
♦K742
♣K9

♠QJ96
♥KQ873
♦Q98
♣2



Board (2) Av: NS=-40

N-S	E-W	Contract	N-S	E-W	IMP
1	6	1H	W-1	50	3
6	1	1NT	N 1	90	4
2	10	1H	W 2	110	-2
10	2	1H	W 2	110	-2
3	8	2NT	E-1	50	3
8	3	3C	N-2	200	-4
4	9	1H	W 2	110	-2
9	4	1NT	N-1	100	-2
5	7	2C	E-2	100	4
7	5	1H	W 1	80	-1

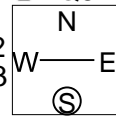
3

♠AK7
♥K975
♦85
♣AQ84

♠QJ10832
♥3
♦Q4
♣J752

♠65
♥AQJ8
♦A1072
♣K109

♠94
♥10642
♦KJ963
♣63



Board (3) Av: NS=+390

N-S	E-W	Contract	N-S	E-W	IMP
1	6	4H	N 6	480	3
6	1	6H	S-1	50	-10
2	10	4H	N 5	450	2
10	2	6H	N 6	980	11
3	8	4H	N 5	450	2
8	3	4H	N 4	420	1
4	9	4H	N 5	450	2
9	4	4H	N 5	450	2
5	7	4H	N 6	480	3
7	5	6H	N-1	50	-10

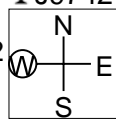
4

♠AK
♥J1095
♦A4
♣J9742

♠10853
♥A84
♦753
♣A63

♠QJ76
♥6
♦KQJ1062
♣K5

♠942
♥KQ732
♦98
♣Q108



Board (4) Av: NS=+620

N-S	E-W	Contract	N-S	E-W	IMP
1	6	3NT	N 5	660	1
6	1	3NT	N 4	630	0
2	10	3NT	N 4	630	0
10	2	3NT	N 4	630	0
3	8	3NT	N 3	600	-1
8	3	3NT	N 3	600	-1
4	9	3NT	N 3	600	-1
9	4	3NT	N 4	630	0
5	7	3NT	N 4	630	0
7	5	5D	S 5	600	-1

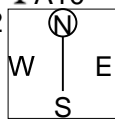
5

♠KJ10
♥10973
♦AKJ10
♣A10

♠A9
♥K65
♦98753
♣875

♠53
♥AQJ42
♦64
♣KJ43

♠Q87642
♥8
♦Q2
♣Q962



Board (5) Av: NS=+670

N-S	E-W	Contract	N-S	E-W	IMP
1	6	4H	N 6	680	0
6	1	4H	N 6	680	0
2	10	4H	N 6	680	0
10	2	5H	N-1	100	-13
3	8	4H	S 6	680	0
8	3	4H	N 6	680	0
4	9	4H	N 5	650	-1
9	4	4H	N 5	650	-1
5	7	5H	N 6	680	0
7	5	4H	N 6	680	0

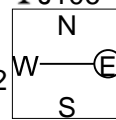
6

♠Q10
♥10862
♦A765
♣J106

♠A942
♥K75
♦J8
♣AKQ9

♠KJ8765
♥AJ94
♦10
♣84

♠3
♥Q3
♦KQ9432
♣7532



Board (6) Av: NS=-80

N-S	E-W	Contract	N-S	E-W	IMP
1	6	3NT	E-1	100	5
6	1	4S	S-1	50	1
2	10	3NTx	E-2	500	11
10	2	3D	W 5	150	-2
3	8	3NT	E-2	200	7
8	3	3NT	E 3	600	-11
4	9	4D	W 4	130	-2
9	4	3NT	E 3	600	-11
5	7	3NT	E-1	100	5
7	5	3D	W 4	130	-2

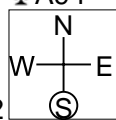
7

♠KJ4
♥1032
♦QJ76
♣A94

♠63
♥K98
♦K1082
♣Q876

♠AQ972
♥QJ74
♦543
♣J

♠1085
♥A65
♦A9
♣K10532



Board (7) Av: NS=+40

N-S	E-W	Contract	N-S	E-W	IMP
1	6	1S	S 2	110	2
6	1	Passout			-1
2	10	2S	N 3	140	3
10	2	1S	S 2	110	2
3	8	Passout			-1
8	3	Passout			-1
4	9	2S	S 2	110	2
9	4	Passout			-1
5	7	Passout			-1
7	5	Passout			-1

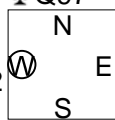
8

♠A543
♥76
♦AK109
♣Q97

♠Q10862
♥QJ983
♦5
♣J6

♠9
♥AK52
♦Q3
♣A108432

♠KJ7
♥104
♦J87642
♣K5



Board (8) Av: NS=+400

N-S	E-W	Contract	N-S	E-W	IMP
1	6	5C	S 6	420	1
6	1	3NT	S 6	490	3
2	10	3NT	N 6	490	3
10	2	3Sx	W-2	300	-3
3	8	3Sx	W-1	100	-7
8	3	3NT	N 6	490	3
4	9	3NT	N 4	430	1
9	4	3NT	N 5	460	2
5	7	3NT	N 4	430	1
7	5	3C	S 5	150	-6

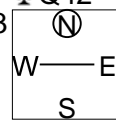
9

♠86
♥8542
♦9872
♣Q42

♠A2
♥AJ
♦AQJ65
♣J765

♠1075
♥KQ9763
♦3
♣AK3

♠KQJ943
♥10
♦K104
♣1098



Board (9) Av: NS=-650

N-S	E-W	Contract	N-S	E-W	IMP
1	6	4S	E 6	680	-1
6	1	5Hx	S-3	500	4
2	10	5D	E-1	100	13
10	2	4S	E 6	680	-1
3	8	4S	E 4	620	1
8	3	4S	E 5	650	0
4	9	4S	W 6	680	-1
9	4	4S	E 6	680	-1
5	7	4S	E 6	680	-1
7	5	4S	W 6	680	-1

10

♠ J53
♥ Q1095
♦ AK52
♣ K9

♠ AQ84
♥ AK2
♦ Q6
♣ A763

N
W — E
S

♠ K1097
♥ J87
♦ 874
♣ 852

♠ 62
♥ 643
♦ J1093
♣ QJ104

Board (10) Av: NS=-10

N-S	E-W	Contract	N-S	E-W	IMP
1	6	2S	E 2	110	-3
6	1	2S	E 2	110	-3
2	10	4S	E-1	100	3
10	2	2D	S 2	90	3
3	8	2S	E 2	110	-3
8	3	4S	E-1	100	3
4	9	1S	E 2	110	-3
9	4	1NT	W 1	90	-2
5	7	2D	S 2	90	3
7	5	3S	E-1	100	3

11

♠ J96
♥ AQ1052
♦ 8
♣ 10973

♠ A5432
♥ K73
♦ A94
♣ K2

N
W — E
S

♠ K
♥ 96
♦ KQJ10752
♣ Q65

♠ Q1087
♥ J84
♦ 63
♣ AJ84

Board (11) Av: NS=-260

N-S	E-W	Contract	N-S	E-W	IMP
1	6	5D	W-1	50	7
6	1	3NT	W 4	430	-5
2	10	3D	W 4	130	4
10	2	3D	W 5	150	3
3	8	3NT	W 4	430	-5
8	3	5D	W 5	400	-4
4	9	5D	W-1	50	7
9	4	3NT	E 4	430	-5
5	7	3D	W 4	130	4
7	5	3NT	W 4	430	-5

12

♠ KJ75
♥ Q6542
♦ 98
♣ AQ

♠ 6
♥ A103
♦ AKJ542
♣ K109

N
W — E
S

♠ AQ98432
♥ 97
♦ 3
♣ 852

♠ 10
♥ KJ8
♦ Q1076
♣ J7643

Board (12) Av: NS=+60

N-S	E-W	Contract	N-S	E-W	IMP
1	6	2S	E 3	140	-5
6	1	3NT	W-3	150	3
2	10	2S	E 3	140	-5
10	2	4S	E-1	50	0
3	8	4S	E-1	50	0
8	3	4S	E-1	50	0
4	9	4S	E-2	100	1
9	4	3NT	W-2	100	1
5	7	4S	E-3	150	3
7	5	4S	E-2	100	1

13

♠ AJ653
♥ K96
♦ K
♣ A865

♠ Q9
♥ QJ10742
♦ 763
♣ 109

N
W — E
S

♠ 84
♥ A5
♦ AJ952
♣ Q432

♠ K1072
♥ 83
♦ Q1084
♣ KJ7

Board (13) Av: NS=+640

N-S	E-W	Contract	N-S	E-W	IMP
1	6	4S	N 5	650	0
6	1	4S	N 5	650	0
2	10	4S	N 5	650	0
10	2	4S	N 4	620	-1
3	8	4S	N 4	620	-1
8	3	2S	S 5	200	-10
4	9	4S	N 4	620	-1
9	4	4S	N 5	650	0
5	7	4S	N 5	650	0
7	5	4S	N 5	650	0

14

♠ A9876
♥ QJ6
♦ Q8
♣ J84

♠ 42
♥ K105
♦ 9764
♣ K1097

N
W — E
S

♠ KQJ3
♥ A843
♦ J10
♣ A65

♠ 105
♥ 972
♦ AK532
♣ Q32

Board (14) Av: NS=-110

N-S	E-W	Contract	N-S	E-W	IMP
1	6	1NT	E 1	90	1
6	1	2S	N-2	100	0
2	10	1NT	E 1	90	1
10	2	1NT	E 2	120	0
3	8	2S	N-2	100	0
8	3	1NT	E 2	120	0
4	9	1NT	E 2	120	0
9	4	2S	N-2	100	0
5	7	1NT	E 1	90	1
7	5	1NT	E 2	120	0

15

♠ 96
♥ 754
♦ A1043
♣ J632

♠ 105
♥ A2
♦ J762
♣ AKQ74

N
W — E
S

♠ A87432
♥ KQ98
♦ 8
♣ 85

♠ KQJ
♥ J1063
♦ KQ95
♣ 109

Board (15) Av: NS=-90

N-S	E-W	Contract	N-S	E-W	IMP
1	6	3C	W 3	110	-1
6	1	3NT	E-2	100	5
2	10	2NT	W-1	50	4
10	2	3S	E 4	170	-2
3	8	2S	E 4	170	-2
8	3	3C	W 3	110	-1
4	9	2NT	W-1	50	4
9	4	2NT	W 2	120	-1
5	7	3S	E 4	170	-2
7	5	2S	E 4	170	-2

16

♠ AJ952
♥ A86
♦ 85
♣ 954

♠ 107
♥ 109
♦ AJ97632
♣ 83

N
W — E
S

♠ 864
♥ KQ75
♦ Q10
♣ AKJ6

♠ KQ3
♥ J432
♦ K4
♣ Q1072

Board (16) Av: NS=-260

N-S	E-W	Contract	N-S	E-W	IMP
1	6	3NT	E 4	630	-9
6	1	3D	W 4	130	4
2	10	3NT	E 5	660	-9
10	2	3D	W 4	130	4
3	8	3D	W 4	130	4
8	3	3D	W 4	130	4
4	9	3D	W 4	130	4
9	4	3NT	E 5	660	-9
5	7	3D	W 4	130	4
7	5	3D	E 5	150	3

17

♠ AKJ8
♥ 8
♦ J10762
♣ Q84

♠ 9764
♥ A102
♦ Q83
♣ A52

N
W — E
S

♠ Q2
♥ KQ974
♦ AK5
♣ KJ7

♠ 1053
♥ J653
♦ 94
♣ 10963

Board (17) Av: NS=-420

N-S	E-W	Contract	N-S	E-W	IMP
1	6	4H	E 4	420	0
6	1	4H	E 4	420	0
2	10	3NT	E 4	430	0
10	2	4H	E 4	420	0
3	8	4H	E 4	420	0
8	3	4H	E 4	420	0
4	9	4H	E 4	420	0
9	4	4H	E 4	420	0
5	7	4H	E 4	420	0
7	5	4H	E 4	420	0

18

♠ KJ62
♥ J98
♦ J53
♣ Q43

♠ Q97
♥ Q1052
♦ K82
♣ 962

N
W — E
S

♠ 1043
♥ A74
♦ Q1097
♣ K85

♠ A85
♥ K63
♦ A64
♣ AJ107

Board (18) Av: NS=+450

N-S	E-W	Contract	N-S	E-W	IMP
1	6	3NT	S 4	630	5
6	1	1NT	S 4	180	-7
2	10	1NT	S 2	120	-8
10	2	3NT	S 4	630	5
3	8	1NT	S 4	180	-7
8	3	3NT	S 3	600	4
4	9	2NT	S 4	180	-7
9	4	3NT	S 4	630	5
5	7	3NT	S 4	630	5
7	5	3NT	S 3	600	4

兵庫県知事杯 OPEN TEAMS Session 4 Flight B 2007年10月7日(日)

1

♠K954
♥Q102
♦954
♣Q97

♠AQJ32
♥864
♦10
♣A1084

♠6
♥AK975
♦KJ763
♣63

♠1087
♥J3
♦AQ82
♣KJ52

Board (1) Av: NS=-30

N-S	E-W	Contract	N-S	E-W	IMP
1	8	4H E-1	50		2
8	1	4H E 4		420	-9
2	6	4H E 4		420	-9
6	2	4H E-1	50		2
3	10	4H E-1	50		2
10	3	4H E-1	50		2
4	5	4H E-1	50		2
5	4	2H E 2		110	-2
7	9	4H E-1	50		2
9	7	4H E-2	100		4

2

♠A74
♥K52
♦A98
♣J1094

♠QJ1092
♥J7
♦732
♣K32

♠K6
♥AQ1098
♦Q10
♣AQ76

♠853
♥643
♦KJ654
♣85

Board (2) Av: NS=-100

N-S	E-W	Contract	N-S	E-W	IMP
1	8	4H E-1	50		4
8	1	3S W 4		170	-2
2	6	2H E 3		140	-1
6	2	2H E 4		170	-2
3	10	3H E 3		140	-1
10	3	2S E 6		230	-4
4	5	4H E-1	50		4
5	4	3H E 3		140	-1
7	9	3NT E-2	100		5
9	7	3H E 4		170	-2

3

♠97432
♥Q72
♦Q6
♣AQ3

♠AQ6
♥J8653
♦10973
♣J

♠1085
♥AK10
♦AJ2
♣10865

♠KJ
♥94
♦K854
♣K9742

Board (3) Av: NS=-120

N-S	E-W	Contract	N-S	E-W	IMP
1	8	2S N-2		100	1
8	1	1NT E 1		90	1
2	6	1H W 4		170	-2
6	2	2C S-2		100	1
3	10	1NT S-1		50	2
10	3	2S N-2		100	1
4	5	2H W 4		170	-2
5	4	1H W 5		200	-2
7	9	1NT S 1		90	5
9	7	1NT S-3		150	-1

4

♠8
♥Q102
♦AJ9743
♣A43

♠AKJ9
♥A95
♦10
♣108762

♠1076532
♥K864
♦K65
♣

♠Q4
♥J73
♦Q82
♣KQJ95

Board (4) Av: NS=-400

N-S	E-W	Contract	N-S	E-W	IMP
1	8	3S E 6		230	5
8	1	5D N-3		300	3
2	6	3S E 6		230	5
6	2	2S E 6		230	5
3	10	4S W 6		680	-7
10	3	3S W 5		200	5
4	5	5Dx N-4		1100	-12
5	4	4D N-2		200	5
7	9	5Dx N-3		800	-9
9	7	5Dx N-2		500	-3

5

♠Q96
♥J102
♦9654
♣532

♠102
♥754
♦Q108
♣AQJ98

♠AJ87
♥AKQ8
♦KJ2
♣K6

♠K543
♥963
♦A73
♣1074

Board (5) Av: NS=-470

N-S	E-W	Contract	N-S	E-W	IMP
1	8	3NT E 5		460	0
8	1	3NT E 6		490	-1
2	6	3NT E 6		490	-1
6	2	3NT E 5		460	0
3	10	3NT E 5		460	0
10	3	3NT E 6		490	-1
4	5	6NT E 6		990	-11
5	4	3NT E 5		460	0
7	9	3NT E 5		460	0
9	7	3NT E 3		400	2

6

♠3
♥AJ852
♦KJ632
♣104

♠AQ9874
♥93
♦54
♣AKJ

♠J105
♥KQ106
♦Q98
♣Q72

♠K62
♥74
♦A107
♣98653

Board (6) Av: NS=-630

N-S	E-W	Contract	N-S	E-W	IMP
1	8	4S W 4		620	0
8	1	4S W 4		620	0
2	6	5Dx N-4		800	-5
6	2	4S W 4		620	0
3	10	4S W 5		650	-1
10	3	4S W 4		620	0
4	5	4S W 4		620	0
5	4	5D N-3		150	10
7	9	4S W 5		650	-1
9	7	4S W 4		620	0

7

♠AKQ532
♥Q7
♦J53
♣63

♠64
♥J2
♦A742
♣Q8752

♠J109
♥AK10543
♦K98
♣4

♠87
♥986
♦Q106
♣AKJ109

Board (7) Av: NS=+130

N-S	E-W	Contract	N-S	E-W	IMP
1	8	3S N-1		100	-6
8	1	2S N 2		110	-1
2	6	3S N 3		140	0
6	2	2S N 3		140	0
3	10	3S N 3		140	0
10	3	3S N 3		140	0
4	5	2S N 3		140	0
5	4	2S N 3		140	0
7	9	2S N 2		110	-1
9	7	3S N 3		140	0

8

♠AK10
♥832
♦A10
♣109873

♠76542
♥109
♦8765
♣K2

♠QJ9
♥Q76
♦KJ4
♣AJ65

♠83
♥AKJ54
♦Q932
♣Q4

Board (8) Av: NS=+190

N-S	E-W	Contract	N-S	E-W	IMP
1	8	3S W-3		150	-1
8	1	3H S-1		50	-6
2	6	2H S 4		170	-1
6	2	3NT N 3		400	5
3	10	3H S 3		140	-2
10	3	2H W-2		100	-3
4	5	3H S 4		170	-1
5	4	4H S 4		420	6
7	9	3H S-1		50	-6
9	7	3NT N 4		430	6

9

♠10963
♥10872
♦J5
♣Q103

♠K5
♥J
♦AK8763
♣AK87

♠AQJ4
♥K9653
♦1042
♣4

♠872
♥AQ4
♦Q9
♣J9652

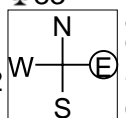
Board (9) Av: NS=-780

N-S	E-W	Contract	N-S	E-W	IMP
1	8	3NT W 6		690	3
8	1	3NT W 6		690	3
2	6	6D E 7		1390	-12
6	2	3NT E 6		690	3
3	10	3NT W 6		690	3
10	3	3NT E 6		690	3
4	5	3NT W 6		690	3
5	4	3NT W 6		690	3
7	9	3NT E 3		600	5
9	7	6D W 6		1370	-11

10

♠KQ943
♥A53
♦Q106
♣83

♠J102
♥8
♦K8532
♣9764



♠A7
♥Q10762
♦A
♣AKQJ10

♠865
♥KJ94
♦J974
♣52

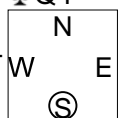
Board (10) Av: NS=-50

N-S	E-W	Contract	N-S	E-W	IMP
1	8	3D W-1	100		4
8	1	3C E 5		150	-3
2	6	3C E 5		150	-3
6	2	4C E 5		150	-3
3	10	3S N-3	300		-6
10	3	4H E-3	300		8
4	5	3NT E-1	100		4
5	4	3C E 4		130	-2
7	9	2C E 5		150	-3
9	7	5C E-1	100		4

11

♠J107
♥9
♦QJ87643
♣Q4

♠K85
♥Q864
♦952
♣1062



♠A93
♥KJ752
♦A
♣AK73

♠Q642
♥A103
♦K10
♣J985

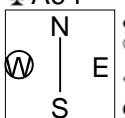
Board (11) Av: NS=-420

N-S	E-W	Contract	N-S	E-W	IMP
1	8	4H W 4	420		0
8	1	4H E 4		420	0
2	6	4H W 4		420	0
6	2	3NT E-3	150		11
3	10	4H E 4		420	0
10	3	4H W 4		420	0
4	5	4H W 5		450	-1
5	4	4H E 4		420	0
7	9	4H E 4		420	0
9	7	4H W 4		420	0

12

♠9763
♥KQ1032
♦A
♣A94

♠K2
♥AJ975
♦42
♣Q763



♠AJ8
♥8
♦KQ1065
♣K1082

♠Q1054
♥64
♦J9873
♣J5

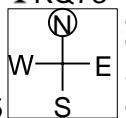
Board (12) Av: NS=-10

N-S	E-W	Contract	N-S	E-W	IMP
1	8	3C W 4	130		-3
8	1	1NT W 1		90	-2
2	6	2NT W 3		150	-4
6	2	3NT W 4		430	-9
3	10	4C W-1	50		2
10	3	2NT W-1	50		2
4	5	3C E-1	50		2
5	4	1NT W-1	50		2
7	9	3NT W-2	100		3
9	7	3NT W-2	100		3

13

♠2
♥AK108
♦A1092
♣KQ73

♠A63
♥96
♦KQ76
♣AJ105



♠Q10874
♥QJ54
♦J83
♣8

♠KJ95
♥732
♦54
♣9642

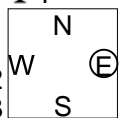
Board (13) Av: NS=+50

N-S	E-W	Contract	N-S	E-W	IMP
1	8	2S W-1	100		2
8	1	2Sx W-1	200		4
2	6	2S E-1	100		2
6	2	2C N-2		200	-6
3	10	3C N 3	110		2
10	3	1NT W 1		90	-4
4	5	2S E-1	100		2
5	4	1NT N-1		100	-4
7	9	2C N 3	110		2
9	7	2S W-1	100		2

14

♠Q108
♥97653
♦AQ94
♣4

♠A43
♥KJ2
♦K652
♣K103



♠J96
♥Q108
♦J103
♣AJ62

♠K752
♥A4
♦87
♣Q9875

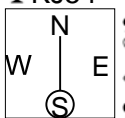
Board (14) Av: NS=-60

N-S	E-W	Contract	N-S	E-W	IMP
1	8	2H N-1		50	0
8	1	1NT E 2		120	-2
2	6	1NT E 2		120	-2
6	2	2H N-1		50	0
3	10	2H N 2	110		5
10	3	2H N-1		50	0
4	5	2H N 2	110		5
5	4	1NT E 1		90	-1
7	9	1NT E 2		120	-2
9	7	1NT E 1		90	-1

15

♠632
♥84
♦AKJ4
♣KJ54

♠QJ
♥KQJ103
♦1053
♣962



♠K10854
♥95
♦Q72
♣Q73

♠A97
♥A762
♦986
♣A108

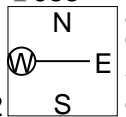
Board (15) Av: NS=-140

N-S	E-W	Contract	N-S	E-W	IMP
1	8	3C S 3	110		6
8	1	3NT S-3		300	-4
2	6	5C S-3		300	-4
6	2	2D N 2	90		6
3	10	3NT S-3		300	-4
10	3	3D N-1		100	1
4	5	3NT N-1		100	1
5	4	3NT S-3		300	-4
7	9	3NT S-2		200	-2
9	7	3NT S 3	600		12

16

♠A65432
♥943
♦8
♣J83

♠K98
♥AK8
♦104
♣KQ742



♠Q
♥J10
♦KQJ976
♣A965

♠J107
♥Q7652
♦A532
♣10

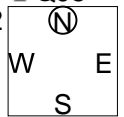
Board (16) Av: NS=-170

N-S	E-W	Contract	N-S	E-W	IMP
1	8	5D E-1	100		7
8	1	3NT W 3		600	-10
2	6	5D E-1	100		7
6	2	5C E-1	100		7
3	10	3NT W 4		630	-10
10	3	5C W-1	100		7
4	5	3NT W-2	200		9
5	4	3NT W 5		660	-10
7	9	5C W-1	100		7
9	7	3NT W 4		630	-10

17

♠AQ76
♥AJ982
♦J
♣QJ5

♠10932
♥K7
♦632
♣A983



♠KJ84
♥5
♦AQ108
♣K1076

♠5
♥Q10643
♦K9754
♣42

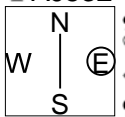
Board (17) Av: NS=+320

N-S	E-W	Contract	N-S	E-W	IMP
1	8	4H S 6	480		4
8	1	4Sx E-1	100		-6
2	6	4H N 4	420		3
6	2	4H N 4	420		3
3	10	4Sx W-2	300		-1
10	3	4Sx W-2	300		-1
4	5	4S E-3	150		-5
5	4	4H N 4	420		3
7	9	4H N 4	420		3
9	7	4Sx W-1	100		-6

18

♠K7
♥AQ7
♦Q94
♣AJ532

♠J84
♥10942
♦8
♣Q10984



♠653
♥J8653
♦A63
♣K7

♠AQ1092
♥K
♦KJ10752
♣6

Board (18) Av: NS=+850

N-S	E-W	Contract	N-S	E-W	IMP
1	8	3NT N 6	690		-4
8	1	3NT N 6	690		-4
2	6	5D S 6	620		-6
6	2	3NT N 6	690		-4
3	10	6D N 6	1370		11
10	3	5D S 6	620		-6
4	5	3NT S 6	690		-4
5	4	3NT N 6	690		-4
7	9	6D S 6	1370		11
9	7	6D S 6	1370		11

19

♠10862
♥762
♦532
♣952

♠9 ♥A74
♥J1043 ♥A98
♦AK109 ♦J74
♣AJ103 ♣KQ74

N
W—E
S

♠KQJ53
♥KQ5
♦Q86
♣86

Board (19) Av: NS=-490

N-S	E-W	Contract	N-S	E-W	IMP
1	5	1S	S-1	50	10
5	1	3NT	E 4	630	-4
2	7	3Sx	S-3	500	0
7	2	5C	E 6	620	-4
3	9	3NT	E 4	630	-4
9	3	3NT	E 4	630	-4
4	8	3NT	E 4	630	-4
8	4	3NT	E 4	630	-4
6	10	2S	S-2	100	9
10	6	3S	S-3	150	8

20

♠K106
♥KQ975
♦974
♣AK

♠AQJ7 ♥832
♥J83 ♥A2
♦532 ♦AKQ106
♣Q109 ♣872

N
W—E
S

♠954
♥1064
♦J8
♣J6543

Board (20) Av: NS=-160

N-S	E-W	Contract	N-S	E-W	IMP
1	5	1NT	N-3	300	-4
5	1	3D	E 3	110	2
2	7	2D	W 3	110	2
7	2	1NT	N-3	300	-4
3	9	3D	E 3	110	2
9	3	3D	E 3	110	2
4	8	1NT	S-3	300	-4
8	4	3D	E 4	130	1
6	10	2D	W 3	110	2
10	6	3D	E 3	110	2

21

♠AKJ5
♥A105
♦7
♣AJ763

♠84 ♥10732
♥Q83 ♥974
♦KJ1086 ♦95
♣KQ4 ♣10982

N
W—E
S

♠Q96
♥KJ62
♦AQ432
♣5

Board (21) Av: NS=+640

N-S	E-W	Contract	N-S	E-W	IMP
1	5	3NT	N 5	660	1
5	1	3NT	N 4	630	0
2	7	3NT	S 4	630	0
7	2	3NT	S 6	690	2
3	9	3NT	N-1	100	-12
9	3	3NT	N 4	630	0
4	8	3NT	N 4	630	0
8	4	4H	S 4	620	-1
6	10	5S	N 5	650	0
10	6	3NT	N 4	630	0

22

♠Q1085
♥10
♦KQ75
♣A765

♠A74 ♥K962
♥J96 ♥Q852
♦10982 ♦J3
♣J82 ♣Q43

N
W—E
S

♠J3
♥AK743
♦A64
♣K109

Board (22) Av: NS=+320

N-S	E-W	Contract	N-S	E-W	IMP
1	5	3NT	S 3	400	2
5	1	3NT	S 4	430	3
2	7	3NT	S 3	400	2
7	2	3NT	S 3	400	2
3	9	3NT	S 6	490	5
9	3	1NT	N 3	150	-5
4	8	3NT	S 4	430	3
8	4	3NT	S-1	50	-9
6	10	3NT	N 4	430	3
10	6	3NT	S-1	50	-9

23

♠85
♥K5
♦AK63
♣A10852

♠A43 ♥KQ1062
♥J10764 ♥Q92
♦92 ♦104
♣K94 ♣J76

N
W—E
S

♠J97
♥A83
♦QJ875
♣Q3

Board (23) Av: NS=+90

N-S	E-W	Contract	N-S	E-W	IMP
1	5	3C	N 3	110	1
5	1	3NT	N-2	200	-7
2	7	2S	E-1	100	0
7	2	2C	N 3	110	1
3	9	4D	S 4	130	1
9	3	3D	S 4	130	1
4	8	3D	S 5	150	2
8	4	3C	N-1	100	-5
6	10	3C	N 3	110	1
10	6	3D	S 4	130	1

24

♠J1083
♥872
♦K75
♣765

♠K652 ♥97
♥J3 ♥AKQ10965
♦A8 ♦J109
♣Q10982 ♣3

N
W—E
S

♠AQ4
♥4
♦Q6432
♣AKJ4

Board (24) Av: NS=-170

N-S	E-W	Contract	N-S	E-W	IMP
1	5	4H	E 4	420	-6
5	1	4S	N-4	200	-1
2	7	4S	N-1	50	3
7	2	5D	N-3	150	1
3	9	2S	N 3	140	7
9	3	4H	E 4	420	-6
4	8	4S	N-3	150	1
8	4	4H	E 4	420	-6
6	10	4S	N-2	100	2
10	6	5Hx	E-1	100	7

25

♠AK632
♥92
♦K92
♣K94

♠8 ♥1095
♥6543 ♥AJ87
♦J753 ♦64
♣J1073 ♣AQ86

N
W—E
S

♠QJ74
♥KQ10
♦AQ108
♣52

Board (25) Av: NS=+450

N-S	E-W	Contract	N-S	E-W	IMP
1	5	4S	N 5	450	0
5	1	4S	N 5	450	0
2	7	4S	N 5	450	0
7	2	4S	N 5	450	0
3	9	4S	N 5	450	0
9	3	4S	N 5	450	0
4	8	4S	N 5	450	0
8	4	4S	N 5	450	0
6	10	4S	N 4	420	-1
10	6	4S	N 4	420	-1

26

♠Q106
♥AJ43
♦J2
♣Q983

♠975 ♥J83
♥762 ♥K85
♦K764 ♦Q9853
♣AJ4 ♣76

N
W—E
S

♠AQ42
♥QK109
♦A10
♣K1052

Board (26) Av: NS=-190

N-S	E-W	Contract	N-S	E-W	IMP
1	5	3NT	S 5	660	13
5	1	3NT	S-1	100	3
2	7	3NT	S-2	200	0
7	2	3NT	S-2	200	0
3	9	3NT	S-2	200	0
9	3	3NT	S-2	200	0
4	8	3NT	S-2	200	0
8	4	3NT	S-2	200	0
6	10	3NT	N-2	200	0
10	6	3NT	S-2	200	0

27

♠KQ1086
♥A10432
♦A7
♣J

♠J92 ♥73
♥QJ986 ♥K
♦J5 ♦KQ9842
♣Q72 ♣A854

N
W—E
S

♠A54
♥75
♦1063
♣K10963

Board (27) Av: NS=+190

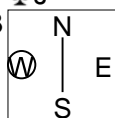
N-S	E-W	Contract	N-S	E-W	IMP
1	5	4S	N 4	420	6
5	1	3S	N 4	170	-1
2	7	4S	N 4	420	6
7	2	3S	N 3	140	-2
3	9	4S	N 4	420	6
9	3	3S	N 4	170	-1
4	8	4S	N-1	50	-6
8	4	3S	N 3	140	-2
6	10	3S	N 3	140	-2
10	6	4S	N-1	50	-6

兵庫県知事杯 OPEN TEAMS Session 4 Flight B 2007年10月7日(日)

28

♠94
♥Q8543
♦109742
♣J

♠AQ103
♥K
♦A53
♣K9876



♠K862
♥76
♦Q6
♣AQ543

♠J75
♥AJ1092
♦KJ8
♣102

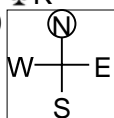
Board (28) Av: NS=-460

N-S	E-W	Contract	N-S	E-W	IMP
1	5	4S	E 6	480	-1
5	1	4S	E 6	480	-1
2	7	4S	W 5	450	0
7	2	4S	E 6	480	-1
3	9	4S	E 5	450	0
9	3	4S	W 5	450	0
4	8	4S	W 5	450	0
8	4	4S	E 5	450	0
6	10	4S	E 5	450	0
10	6	4S	E 5	450	0

29

♠7632
♥109873
♦A53
♣K

♠QJ109
♥62
♦KQ8
♣AQ83



♠K84
♥AQ4
♦J97
♣10976

♠A5
♥KJ5
♦10642
♣J542

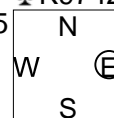
Board (29) Av: NS=-30

N-S	E-W	Contract	N-S	E-W	IMP
1	5	1NT	E 2	120	-3
5	1	1NT	E 2	120	-3
2	7	1NT	E-1	100	4
7	2	2H	N-1	100	-2
3	9	3NT	E-2	200	6
9	3	2H	N-2	200	-5
4	8	1NT	W-1	100	4
8	4	1NT	E 2	120	-3
6	10	2H	N-1	100	-2
10	6	2C	W-1	100	4

30

♠84
♥A1086
♦AJ
♣K9742

♠KQJ10765
♥KJ
♦108
♣65



♠93
♥Q7542
♦Q543
♣108

♠A2
♥93
♦K9762
♣AQJ3

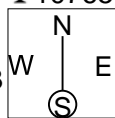
Board (30) Av: NS=+410

N-S	E-W	Contract	N-S	E-W	IMP
1	5	4Sx	W-3	500	3
5	1	3NT	S 3	400	0
2	7	5C	N 5	400	0
7	2	5C	S 5	400	0
3	9	5C	N 5	400	0
9	3	5C	S 5	400	0
4	8	4Sx	E-3	500	-3
8	4	5C	S 5	400	0
6	10	3NT	S 3	400	0
10	6	5C	S 5	400	0

31

♠2
♥AK653
♦752
♣10765

♠Q93
♥10
♦Q8643
♣AK92



♠J10654
♥Q982
♦10
♣QJ3

♠AK87
♥J74
♦AKJ9
♣84

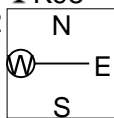
Board (31) Av: NS=+90

N-S	E-W	Contract	N-S	E-W	IMP
1	5	2H	S 3	140	2
5	1	2H	S 2	110	1
2	7	2H	S 3	140	2
7	2	2H	S 3	140	2
3	9	5H	N-3	300	-9
9	3	4H	S-2	200	-7
4	8	2H	S 3	140	2
8	4	2H	S 2	110	1
6	10	2H	N 3	140	2
10	6	2H	S 2	110	1

32

♠J54
♥Q763
♦1093
♣K98

♠KQ632
♥10
♦AQ74
♣642



♠A108
♥KJ52
♦862
♣J105

♠97
♥A984
♦KJ5
♣AQ73

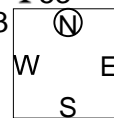
Board (32) Av: NS=-110

N-S	E-W	Contract	N-S	E-W	IMP
1	5	3H	N-3	150	-1
5	1	2S	W 2	110	0
2	7	3H	N-1	50	2
7	2	3H	S-2	100	0
3	9	3S	W 3	140	-1
9	3	3H	N-3	150	-1
4	8	3S	W-2	200	7
8	4	3S	W 3	140	-1
6	10	1NT	S-1	50	2
10	6	3H	N-2	100	0

33

♠AK64
♥QJ
♦Q10874
♣53

♠J9853
♥AK72
♦AK5
♣2



♠2
♥98653
♦J
♣QJ10876

♠Q107
♥104
♦9632
♣AK94

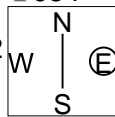
Board (33) Av: NS=-240

N-S	E-W	Contract	N-S	E-W	IMP
1	5	4H	E 6	480	-6
5	1	3C	E 4	130	3
2	7	3H	E 3	140	3
7	2	4H	E 6	480	-6
3	9	3H	E 6	230	0
9	3	2H	E 5	200	1
4	8	3D	N-1	50	5
8	4	1S	W 2	110	4
6	10	3NT	S-3	150	3
10	6	4H	W 5	450	-5

34

♠10753
♥64
♦J1095
♣J84

♠QJ2
♥Q10972
♦64
♣A52



♠A864
♥83
♦Q872
♣1063

♠K9
♥AKJ5
♦AK3
♣KQ97

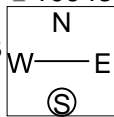
Board (34) Av: NS=+450

N-S	E-W	Contract	N-S	E-W	IMP
1	5	3NT	S 4	630	5
5	1	3NT	S-1	100	-11
2	7	3NT	S 4	630	5
7	2	3NT	S 3	600	4
3	9	3NT	S 4	630	5
9	3	2NT	S 3	150	-7
4	8	2NT	S 2	120	-8
8	4	2NT	S 5	210	-6
6	10	3NT	S 4	630	5
10	6	3NT	S 3	600	4

35

♠1054
♥A5
♦J632
♣10943

♠6
♥Q7643
♦K4
♣KJ752



♠AKQ97
♥98
♦Q85
♣Q86

♠J832
♥KJ102
♦A1097
♣A

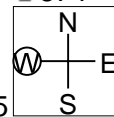
Board (35) Av: NS=-50

N-S	E-W	Contract	N-S	E-W	IMP
1	5	2H	W 2	110	-2
5	1	2S	E-1	100	4
2	7	2S	E 2	110	-2
7	2	2D	S-1	50	0
3	9	2S	E 3	140	-3
9	3	1NT	W 1	90	-1
4	8	3NT	W-3	300	8
8	4	3NT	E-1	100	4
6	10	1NT	W 2	120	-2
10	6	2S	E 2	110	-2

36

♠Q10754
♥A73
♦K7
♣874

♠83
♥K96
♦AJ65
♣AK105



♠K2
♥QJ105
♦Q432
♣J93

♠AJ96
♥842
♦1098
♣Q62

Board (36) Av: NS=+180

N-S	E-W	Contract	N-S	E-W	IMP
1	5	2NT	W-2	200	1
5	1	2NT	W-2	200	1
2	7	2NT	W-1	100	-2
7	2	2NT	W-2	200	1
3	9	2NT	W-1	100	-2
9	3	2NT	W-2	200	1
4	8	2NT	W-2	200	1
8	4	2NT	W-2	200	1
6	10	2NT	W-1	100	-2
10	6	3NT	W-3	300	3

兵庫県知事杯 OPEN TEAMS Session 5 Flight B 2007年10月8日(月)

1

♠KQ32
♥A109
♦2
♣107642

♠J87
♥KQJ752
♦Q7
♣83

♠10965
♥86
♦J10985
♣Q5

♠A4
♥43
♦AK643
♣AKJ9

Board (1) Av: NS=+460

N-S	E-W	Contract	N-S	E-W	IMP
1	4	6C	S 7	940	10
4	1	3NT	N 6	490	1
2	3	4S	S 5	450	0
3	2	5C	S 7	440	-1
5	8	5C	S 7	440	-1
8	5	3NT	N 5	460	0
6	9	5C	S 7	440	-1
9	6	3NT	N 5	460	0
7	10	3NT	S 6	490	1
10	7	5C	S 7	440	-1

2

♠A106
♥KJ82
♦KQ1032
♣J

♠Q972
♥AQ7
♦75
♣A975

♠K54
♥105
♦J64
♣Q10862

♠J83
♥9643
♦A98
♣K43

Board (2) Av: NS=+190

N-S	E-W	Contract	N-S	E-W	IMP
1	4	3H	S 3	140	-2
4	1	4H	N 4	620	10
2	3	3H	S 5	200	0
3	2	3H	S-1	100	-7
5	8	4H	S 5	650	10
8	5	3H	S-1	100	-7
6	9	3H	S 3	140	-2
9	6	3D	N 3	110	-2
7	10	2H	S 5	200	0
10	7	3H	S 4	170	-1

3

♠QJ93
♥KJ765
♦3
♣KQ4

♠106
♥A4
♦AQ10762
♣J95

♠K874
♥1093
♦4
♣A10762

♠A52
♥Q82
♦KJ985
♣83

Board (3) Av: NS=+80

N-S	E-W	Contract	N-S	E-W	IMP
1	4	3H	N 3	140	2
4	1	2H	N 3	140	2
2	3	2H	N-1	50	-4
3	2	4H	N-2	100	-5
5	8	2H	N 3	140	2
8	5	4H	N-1	50	-4
6	9	3H	S 3	140	2
9	6	4Hx	N-1	100	-5
7	10	2D	W-3	300	6
10	7	2D	W-3	300	6

4

♠KJ96
♥6
♦AK103
♣K1084

♠Q2
♥Q10932
♦J76
♣AJ3

♠A103
♥J754
♦54
♣Q752

♠8754
♥AK8
♦Q982
♣96

Board (4) Av: NS=+560

N-S	E-W	Contract	N-S	E-W	IMP
1	4	4S	S 4	620	2
4	1	2S	S 4	170	-9
2	3	4S	S 4	620	2
3	2	2S	S 4	170	-9
5	8	4S	S 4	620	2
8	5	4S	S 4	620	2
6	9	4S	S 4	620	2
9	6	4S	S 4	620	2
7	10	4S	S 4	620	2
10	7	4S	S 4	620	2

5

♠AK102
♥K42
♦8742
♣43

♠Q76
♥A107
♦J
♣AQ10986

♠J954
♥Q963
♦AQ5
♣J7

♠83
♥J85
♦K10963
♣K52

Board (5) Av: NS=-120

N-S	E-W	Contract	N-S	E-W	IMP
1	4	3NT	E 3	400	-7
4	1	2C	W 3	110	0
2	3	3NT	E-2	100	6
3	2	3C	W-2	100	6
5	8	2NT	E 2	120	0
8	5	3H	E 3	140	-1
6	9	3H	E-2	100	6
9	6	3NT	E 3	400	-7
7	10	3NT	E-1	50	5
10	7	3NT	E 4	430	-7

6

♠AJ75
♥AJ4
♦1084
♣J75

♠Q98
♥10652
♦K973
♣K6

♠K42
♥Q8
♦AQ6
♣Q10982

♠1063
♥K973
♦J52
♣A43

Board (6) Av: NS=-140

N-S	E-W	Contract	N-S	E-W	IMP
1	4	1NT	E 2	120	1
4	1	2D	S-3	150	0
2	3	1NT	E 3	150	0
3	2	1NT	E 4	180	-1
5	8	1NT	E 3	150	0
8	5	1NT	E 1	90	2
6	9	1NT	E-1	100	6
9	6	1NT	E 4	180	-1
7	10	1NT	E 2	120	1
10	7	1NT	E 3	150	0

7

♠AJ98
♥A73
♦96
♣AJ92

♠K652
♥85
♦KJ74
♣K76

♠Q74
♥964
♦AQ1085
♣43

♠103
♥KQJ102
♦32
♣Q1085

Board (7) Av: NS=+170

N-S	E-W	Contract	N-S	E-W	IMP
1	4	2H	S 4	170	0
4	1	2H	S 4	170	0
2	3	4H	N 4	620	10
3	2	2C	N 6	170	0
5	8	3H	S 4	170	0
8	5	3H	S 4	170	0
6	9	2C	N 4	130	-1
9	6	2C	N 6	170	0
7	10	2H	S 4	170	0
10	7	2H	S 5	200	1

8

♠9
♥KQ109
♦KJ1054
♣Q94

♠1087653
♥AJ7
♦A
♣K102

♠AKQ42
♥63
♦Q832
♣86

♠J
♥8542
♦976
♣AJ753

Board (8) Av: NS=-440

N-S	E-W	Contract	N-S	E-W	IMP
1	4	4S	W 5	450	0
4	1	4S	W 5	450	0
2	3	4S	W 4	420	1
3	2	4S	W 5	450	0
5	8	4S	W 4	420	1
8	5	4S	W 5	450	0
6	9	5S	W 5	450	0
9	6	4S	W 5	450	0
7	10	4S	W 4	420	1
10	7	4S	W 4	420	1

9

♠5
♥86
♦J86532
♣AQ102

♠J42
♥9432
♦94
♣KJ74

♠K1097
♥AKQ
♦AQ
♣9653

♠AQ863
♥J1075
♦K107
♣8

Board (9) Av: NS=+270

N-S	E-W	Contract	N-S	E-W	IMP
1	4	4C	E-3	300	1
4	1	1NT	E-1	100	-5
2	3	3NT	E-4	400	4
3	2	3NT	E-3	300	1
5	8	3D	S 4	130	-4
8	5	3D	N 4	130	-4
6	9	2NT	E-3	300	1
9	6	1NT	E-3	300	1
7	10	2NT	E-5	500	6
10	7	3NT	E-3	300	1

10

♠AQJ
♥J103
♦KJ987
♣A3

♠10976
♥AQ
♦A6
♣KJ642

♠843
♥9754
♦Q1054
♣95

N
W—E
S

♠K52
♥K862
♦32
♣Q1087

Board (10) Av: NS=0

N-S	E-W	Contract	N-S	E-W	IMP
1	4	3D	N 3	110	3
4	1	3C	E 3	110	-3
2	3	3C	E-1	100	3
3	2	2D	N 2	90	3
5	8	3C	E-1	100	3
8	5	1NT	N-1	100	-3
6	9	3D	N 3	110	3
9	6	2NT	E 2	120	-3
7	10	1NT	W 1	90	-3
10	7	1NT	N-1	100	-3

11

♠A1075
♥AJ2
♦9
♣KQJ107

♠KQ
♥K104
♦KJ64
♣A983

♠J98
♥Q95
♦Q53
♣6542

N
W—E
S

♠6432
♥8763
♦A10872
♣

Board (11) Av: NS=-50

N-S	E-W	Contract	N-S	E-W	IMP
1	4	2D	E 3	110	-2
4	1	2Dx	E 4	380	-8
2	3	2H	E 2	110	-2
3	2	3C	N-1	50	0
5	8	2C	N 2	90	4
8	5	2H	W 2	110	-2
6	9	3C	N 4	130	5
9	6	1NT	E-1	50	3
7	10	2S	N-2	100	-2
10	7	2D	E 2	90	-1

12

♠10985
♥J83
♦Q2
♣AK93

♠AK76
♥10954
♦754
♣104

♠432
♥2
♦AJ1063
♣8652

N
W—E
S

♠QJ
♥AKQ76
♦K98
♣QJ7

Board (12) Av: NS=-420

N-S	E-W	Contract	N-S	E-W	IMP
1	4	4H	W 4	420	0
4	1	4H	W 4	420	0
2	3	4H	W 4	420	0
3	2	4H	W 4	420	0
5	8	4H	W 4	420	0
8	5	4H	W 4	420	0
6	9	4H	W 4	420	0
9	6	4H	W 4	420	0
7	10	4H	W 4	420	0
10	7	4H	W 4	420	0

13

♠AK10964
♥4
♦10762
♣32

♠Q2
♥AQ97
♦KQ943
♣54

♠J875
♥J3
♦AJ5
♣AKQ8

N
W—E
S

♠3
♥K108652
♦8
♣J10976

Board (13) Av: NS=+590

N-S	E-W	Contract	N-S	E-W	IMP
1	4	5Hx	W-1	200	-9
4	1	5Hx	W-2	500	-3
2	3	5Hx	W-2	500	-3
3	2	4S	N 6	680	3
5	8	4S	S 6	680	3
8	5	4S	N 5	650	2
6	9	4S	N 6	680	3
9	6	5Hx	W-2	500	-3
7	10	5Hx	W-2	500	-3
10	7	4S	N 6	680	3

14

♠10
♥AJ10
♦K754
♣AK542

♠854
♥Q87652
♦3
♣1086

♠AQJ
♥43
♦AQ10962
♣97

N
W—E
S

♠K97632
♥K9
♦J8
♣QJ3

Board (14) Av: NS=+750

N-S	E-W	Contract	N-S	E-W	IMP
1	4	6D	S 7	940	5
4	1	6D	S 6	920	5
2	3	3NT	S 5	460	-7
3	2	6D	S 6	920	5
5	8	6D	S 7	940	5
8	5	3NT	S 5	460	-7
6	9	3NT	S 5	460	-7
9	6	5D	S 6	420	-8
7	10	6D	S 6	920	5
10	7	6D	S 7	940	5

15

♠Q984
♥75
♦QJ5
♣AK62

♠K653
♥A643
♦7643
♣4

♠A10
♥KQJ2
♦A92
♣QJ107

N
W—E
S

♠J72
♥1098
♦K108
♣9853

Board (15) Av: NS=+640

N-S	E-W	Contract	N-S	E-W	IMP
1	4	3NT	S 5	660	1
4	1	3NT	S 4	630	0
2	3	3NT	S 4	630	0
3	2	3NT	S 4	630	0
5	8	3NT	S 3	600	-1
8	5	3NT	S 6	690	2
6	9	3NT	S 4	630	0
9	6	3NT	S 4	630	0
7	10	3NT	S 4	630	0
10	7	3NT	S 5	660	1

16

♠KQ8
♥KJ52
♦
♣AJ10752

♠J6
♥Q6
♦Q986432
♣Q8

♠A10753
♥A74
♦J7
♣K93

N
W—E
S

♠942
♥10983
♦AK105
♣64

Board (16) Av: NS=+480

N-S	E-W	Contract	N-S	E-W	IMP
1	4	4S	S 7	510	1
4	1	5C	N 7	440	-1
2	3	4S	S 7	510	1
3	2	4S	S 7	510	1
5	8	5C	N 7	440	-1
8	5	4S	S 7	510	1
6	9	5H	S-1	50	-11
9	6	4S	S 4	420	-2
7	10	4S	S 7	510	1
10	7	4S	S 7	510	1

17

♠Q62
♥K32
♦1076
♣AQ52

♠J1054
♥109875
♦J4
♣43

♠K98
♥AQ6
♦KQ853
♣106

N
W—E
S

♠A73
♥J4
♦A92
♣KJ987

Board (17) Av: NS=+400

N-S	E-W	Contract	N-S	E-W	IMP
1	4	3NT	N 3	400	0
4	1	3NT	N 4	430	1
2	3	3NT	N 3	400	0
3	2	3NT	N 3	400	0
5	8	3NT	N 4	430	1
8	5	3NT	N 3	400	0
6	9	3NT	N 3	400	0
9	6	3NT	N 3	400	0
7	10	3NT	N 3	400	0
10	7	3NT	N 3	400	0

18

♠Q10853
♥Q53
♦K74
♣J10

♠J9
♥AK108
♦AJ62
♣AQ8

♠AK7
♥742
♦Q1098
♣K95

N
W—E
S

♠642
♥J96
♦53
♣76432

Board (18) Av: NS=+100

N-S	E-W	Contract	N-S	E-W	IMP
1	4	1D	E-2	100	0
4	1	1D	E-2	100	0
2	3	3C	W-2	100	0
3	2	2S	N 3	140	1
5	8	3S	S 3	140	1
8	5	3C	W-1	50	-2
6	9	2S	N 2	110	0
9	6	3S	N-1	100	-5
7	10	2S	N 2	110	0
10	7	1D	E-1	50	-2

兵庫県知事杯 OPEN TEAMS Session 6 Flight B 2007年10月8日(月)

1

♠K98
♥Q65
♦K62
♣Q972

♠Q754
♥832
♦AQ8
♣J53

♠J62
♥K109
♦J10973
♣A10

♠A103
♥AJ74
♦54
♣K864

Board (1) Av: NS=+60

N-S	E-W	Contract	N-S	E-W	IMP
1	3	1NT N 1	90		1
3	1	1NT N 1	90		1
2	4	1NT N 2	120		2
4	2	1NT N-1		50	-3
5	6	1NT N 2	120		2
6	5	1NT N 1	90		1
7	8	1NT N 2	120		2
8	7	1NT N 1	90		1
9	10	1NT N-1		50	-3
10	9	1NT N-1		50	-3

2

♠A8742
♥A4
♦AQ
♣K842

♠Q6
♥K10862
♦765
♣1095

♠J93
♥Q95
♦J432
♣Q63

♠K105
♥J73
♦K1098
♣AJ7

Board (2) Av: NS=+970

N-S	E-W	Contract	N-S	E-W	IMP
1	3	6S N 7	1460		10
3	1	4S N 6	680		-7
2	4	4S N 6	680		-7
4	2	6S N 6	1430		10
5	6	4S N 6	680		-7
6	5	4S N 6	680		-7
7	8	4S N 7	710		-6
8	7	5S N 6	680		-7
9	10	6S N 7	1460		10
10	9	6S N 7	1460		10

3

♠A864
♥AKJ63
♦AJ2
♣8

♠J7
♥1085
♦Q763
♣9754

♠KQ1052
♥97
♦K105
♣Q32

♠93
♥Q42
♦984
♣AKJ106

Board (3) Av: NS=+470

N-S	E-W	Contract	N-S	E-W	IMP
1	3	4H N 6	480		0
3	1	4H N 6	480		0
2	4	4H N 5	450		-1
4	2	4H N 6	480		0
5	6	4H N 6	480		0
6	5	4H N 4	420		-2
7	8	3NT N 6	490		1
8	7	4H N 5	450		-1
9	10	4H N 5	450		-1
10	9	4H N 5	450		-1

4

♠KQ87
♥J643
♦A4
♣AK7

♠AJ6
♥KQ109
♦KJ5
♣QJ8

♠A875
♥Q7632
♣10964

♠1095432
♥2
♦1098
♣532

Board (4) Av: NS=+30

N-S	E-W	Contract	N-S	E-W	IMP
1	3	1NT W 2	120		-4
3	1	4S S-1	100		-4
2	4	1NT W 3	150		-5
4	2	1NT W 4	180		-5
5	6	1NT W 3	150		-5
6	5	3D E 3	110		-4
7	8	2Sx S 3	870		13
8	7	2NT E 4	180		-5
9	10	2Sx S 3	870		13
10	9	2S S 3	140		3

5

♠K87
♥KQ43
♦4
♣A10532

♠QJ63
♥852
♦K1086
♣J4

♠954
♥A976
♦AJ52
♣96

♠A102
♥J10
♦Q973
♣KQ87

Board (5) Av: NS=+260

N-S	E-W	Contract	N-S	E-W	IMP
1	3	3NT S 3	600		8
3	1	3C N 5	150		-3
2	4	3NT S-1		100	-8
4	2	3NT S 4	630		9
5	6	3NT S-1		100	-8
6	5	2NT S 3	150		-3
7	8	3NT S-1		100	-8
8	7	2NT S 4	180		-2
9	10	3NT N 4	630		9
10	9	3NT S 3	600		8

6

♠10875
♥
♦K1097
♣A10732

♠K9
♥QJ953
♦QJ82
♣K5

♠A62
♥K1086
♦3
♣J9864

♠QJ43
♥A742
♦A654
♣Q

Board (6) Av: NS=-100

N-S	E-W	Contract	N-S	E-W	IMP
1	3	4S S-2	100		0
3	1	4S S-2	100		0
2	4	4S S-1	50		2
4	2	5Hx W-2	500		12
5	6	3H W 3	140		-1
6	5	4S S-3	150		-2
7	8	4Sx S-2	300		-5
8	7	4S S-2	100		0
9	10	4S S-2	100		0
10	9	4S S-1	50		2

7

♠AKJ1076
♥10975
♦J72
♣

♠5
♥82
♦Q98
♣Q1098652

♠Q842
♥Q6
♦AK54
♣A43

♠93
♥AKJ43
♦1063
♣KJ7

Board (7) Av: NS=+630

N-S	E-W	Contract	N-S	E-W	IMP
1	3	4H S 7	710		2
3	1	4H S-1		100	-12
2	4	4H S 6	680		2
4	2	5Hx N 7	1250		12
5	6	4H S 5	650		1
6	5	4H S 5	650		1
7	8	4H S 6	680		2
8	7	2NT E-3	300		-8
9	10	4H S 6	680		2
10	9	4H S 6	680		2

8

♠K9754
♥74
♦A93
♣1072

♠J1062
♥AJ3
♦J764
♣Q6

♠AQ8
♥Q10982
♦108
♣A53

♠3
♥K65
♦KQ52
♣KJ984

Board (8) Av: NS=-120

N-S	E-W	Contract	N-S	E-W	IMP
1	3	3H E 4	170		-2
3	1	3C N-2	100		1
2	4	2H E 2	110		0
4	2	3C N-1	50		2
5	6	2S N-3	150		-1
6	5	2H E 3	140		-1
7	8	3H E-1		50	5
8	7	3H E 4	170		-2
9	10	4C S-2	100		1
10	9	3H E 4	170		-2

9

♠10943
♥J3
♦K1074
♣875

♠KQJ7
♥A1075
♦QJ
♣K64

♠2
♥KQ42
♦A8532
♣A92

♠A865
♥986
♦96
♣QJ103

Board (9) Av: NS=-770

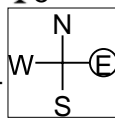
N-S	E-W	Contract	N-S	E-W	IMP
1	3	6H W 6	1430		-12
3	1	4H W 6	680		3
2	4	6H W 6	1430		-12
4	2	4H W 6	680		3
5	6	4H W 6	680		3
6	5	4H W 6	680		3
7	8	5H W-1		100	13
8	7	4H W 6	680		3
9	10	4H W 5	650		3
10	9	4H W 6	680		3

兵庫県知事杯 OPEN TEAMS Session 6 Flight B 2007年10月8日(月)

10

♠KJ83
♥A108543
♦53
♣5

♠1074
♥Q92
♦AQ964
♣AQ



♠52
♥J7
♦K102
♣J109864
♠AQ96
♥K6
♦J87
♣K732

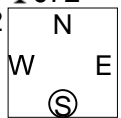
Board (10) Av: NS=+240

N-S	E-W	Contract	N-S	E-W	IMP
1	3	4S	S-1	100	-8
3	1	4S	N 4	620	9
2	4	3S	S 4	170	-2
4	2	4S	N 4	620	9
5	6	2H	N 3	140	-3
6	5	4H	N-1	100	-8
7	8	3S	S 4	170	-2
8	7	3H	N 3	140	-3
9	10	3H	N 3	140	-3
10	9	4S	S 4	620	9

11

♠Q95
♥A1043
♦KJ9
♣J72

♠10842
♥52
♦Q532
♣A85



♠AK3
♥J9876
♦104
♣K94
♠J76
♥KQ
♦A876
♣Q1063

Board (11) Av: NS=+80

N-S	E-W	Contract	N-S	E-W	IMP
1	3	2NT	S 2	120	1
3	1	2NT	S-1	50	-4
2	4	2NT	S 3	150	2
4	2	2NT	S 2	120	1
5	6	2NT	S 2	120	1
6	5	2NT	S-1	50	-4
7	8	2NT	S 2	120	1
8	7	2NT	S 2	120	1
9	10	2NT	S-1	50	-4
10	9	2NT	S 2	120	1

12

♠QJ1053
♥AKQJ96
♦98
♣

♠K862
♥72
♦A
♣KQJ954



♠94
♥83
♦Q432
♣108762
♠A7
♥1054
♦KJ10765
♣A3

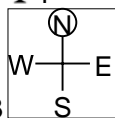
Board (12) Av: NS=+560

N-S	E-W	Contract	N-S	E-W	IMP
1	3	4H	N 5	650	3
3	1	6H	N-1	100	-12
2	4	6H	S-1	100	-12
4	2	5H	S 5	650	3
5	6	4H	N 5	650	3
6	5	5H	S 5	650	3
7	8	5H	N 5	650	3
8	7	5H	N 5	650	3
9	10	4H	S 5	650	3
10	9	5H	S 5	650	3

13

♠KJ8
♥A76
♦AQ10752
♣4

♠632
♥9854
♦K4
♣J1063



♠54
♥KQJ2
♦98
♣KQ875
♠AQ1097
♥103
♦J63
♣A92

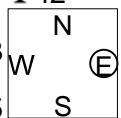
Board (13) Av: NS=+700

N-S	E-W	Contract	N-S	E-W	IMP
1	3	4S	S 7	710	0
3	1	4S	S 6	680	-1
2	4	4S	S 7	710	0
4	2	4S	S 7	710	0
5	6	4S	S 7	710	0
6	5	4S	S 7	710	0
7	8	4S	S 7	710	0
8	7	4S	S 5	650	-2
9	10	5D	N 7	640	-2
10	9	4S	N 7	710	0

14

♠Q953
♥K97
♦K1082
♣42

♠86
♥Q1083
♦765
♣Q1095



♠107
♥AJ65
♦J94
♣AKJ6
♠AKJ42
♥42
♦AQ3
♣873

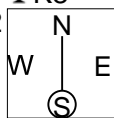
Board (14) Av: NS=+200

N-S	E-W	Contract	N-S	E-W	IMP
1	3	3S	S 3	140	-2
3	1	3S	S 4	170	-1
2	4	2S	S 4	170	-1
4	2	4S	S 4	420	6
5	6	2S	S 4	170	-1
6	5	3S	S 4	170	-1
7	8	3S	S 4	170	-1
8	7	2S	S 4	170	-1
9	10	4S	S 4	420	6
10	9	3S	S 4	170	-1

15

♠7
♥A103
♦AJ109873
♣K8

♠A8652
♥K94
♦KQ4
♣109



♠KJ103
♥J8
♦AQJ5432
♠Q94
♥Q7652
♦652
♣76

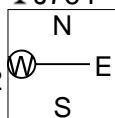
Board (15) Av: NS=-270

N-S	E-W	Contract	N-S	E-W	IMP
1	3	6S	W 6	980	-12
3	1	5S	W-1	50	8
2	4	5S	W 5	450	-5
4	2	5S	W 5	450	-5
5	6	4S	W 5	450	-5
6	5	4S	W 6	480	-5
7	8	5S	W-1	50	8
8	7	5S	W-2	100	9
9	10	5S	W-1	50	8
10	9	4S	W 6	480	-5

16

♠86
♥QJ1054
♦A5
♣J764

♠J42
♥A86
♦10972
♣Q32



♠KQ1093
♥92
♦863
♣AK5
♠A75
♥K73
♦KQJ4
♣1098

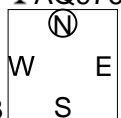
Board (16) Av: NS=-80

N-S	E-W	Contract	N-S	E-W	IMP
1	3	3S	E-1	100	5
3	1	4H	N-2	100	-1
2	4	3H	N 3	140	6
4	2	2S	E 2	110	-1
5	6	2S	E 3	140	-2
6	5	2S	E 2	110	-1
7	8	2S	E 2	110	-1
8	7	2S	E 2	110	-1
9	10	2S	E 2	110	-1
10	9	2S	E 2	110	-1

17

♠Q876
♥K82
♦2
♣AQ976

♠J105
♥J6
♦1073
♣K10853



♠A32
♥10754
♦AKQ94
♣4
♠K94
♥AQ93
♦J865
♣J2

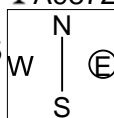
Board (17) Av: NS=+40

N-S	E-W	Contract	N-S	E-W	IMP
1	3	2NT	S-1	50	-3
3	1	2C	N-2	100	-4
2	4	2NT	S 2	120	2
4	2	1H	S 3	140	3
5	6	2NT	S-2	100	-4
6	5	3Dx	E-2	300	6
7	8	2S	N 3	140	3
8	7	3C	N-1	50	-3
9	10	2H	S 3	140	3
10	9	2NT	S-1	50	-3

18

♠KQ86
♥K6
♦A10
♣A9872

♠AJ109
♥A1095
♦J875
♣5



♠732
♥J83
♦Q43
♣KJ63
♠54
♥Q742
♦K962
♣Q104

Board (18) Av: NS=+120

N-S	E-W	Contract	N-S	E-W	IMP
1	3	1NT	N 2	120	0
3	1	1NT	N 2	120	0
2	4	3NT	S-1	100	-6
4	2	1NT	N 2	120	0
5	6	1NT	N 1	90	-1
6	5	1NT	N 2	120	0
7	8	2C	E-5	250	4
8	7	1NT	N 3	150	1
9	10	1NT	N 2	120	0
10	9	3C	N 3	110	0

19

♠3
♥AJ952
♦Q76
♣KJ109

♠AKQJ7
♥KQ10
♦93
♣Q52

N
W—E
S

♠10982
♥8643
♦AK54
♣7

♠654
♥7
♦J1082
♣A8643

Board (19) Av: NS=-330

N-S	E-W	Contract	N-S	E-W	IMP
1	2	4S	W 4	620	-7
2	1	4S	W 4	620	-7
3	4	3S	W 4	170	4
4	3	4S	W 4	620	-7
5	10	4S	W-1	100	10
10	5	3S	W 4	170	4
6	7	4S	W 4	620	-7
7	6	4S	W-1	100	10
8	9	4S	W 4	620	-7
9	8	4S	W-1	100	10

20

♠A1075
♥KQJ82
♦42
♣106

♠K632
♥96
♦KQ76
♣AJ7

N
W—E
S

♠J98
♥10753
♦985
♣985

♠Q4
♥A4
♦AJ103
♣KQ432

Board (20) Av: NS=+560

N-S	E-W	Contract	N-S	E-W	IMP
1	2	3NT	S 3	600	1
2	1	3NT	S 4	630	2
3	4	3NT	S 3	600	1
4	3	3NT	S 3	600	1
5	10	3NT	S 5	660	3
10	5	1NT	S 3	150	-9
6	7	2NT	S 5	210	-8
7	6	3NT	S 5	660	3
8	9	3NT	S 3	600	1
9	8	3NT	S 3	600	1

21

♠63
♥Q104
♦KJ63
♣KQJ43

♠9754
♥A976
♦109
♣K106

N
W—E
S

♠AKQ2
♥J
♦AQ8742
♣52

♠J108
♥K8532
♦5
♣A987

Board (21) Av: NS=-210

N-S	E-W	Contract	N-S	E-W	IMP
1	2	4S	E 6	480	-7
2	1	4S	E-1	50	6
3	4	4S	E 5	450	-6
4	3	4S	E 4	420	-5
5	10	4S	E-1	50	6
10	5	3S	W 5	200	0
6	7	4S	E-1	50	6
7	6	3S	E 3	140	2
8	9	4S	E 5	450	-6
9	8	3S	E 3	140	2

22

♠A9742
♥J872
♦94
♣Q8

♠K863
♥1065
♦AJ7
♣K109

N
W—E
S

♠J
♥KQ3
♦K103
♣AJ7532

♠Q105
♥A94
♦Q8652
♣64

Board (22) Av: NS=-620

N-S	E-W	Contract	N-S	E-W	IMP
1	2	3C	E 4	130	10
2	1	3NT	W 4	630	0
3	4	3NT	W 4	630	0
4	3	3NT	E 4	630	0
5	10	3NT	E 3	600	1
10	5	3NT	E 3	600	1
6	7	3NT	E 4	630	0
7	6	3NT	E 4	630	0
8	9	3NT	E 3	600	1
9	8	3NT	E 5	660	-1

23

♠J7
♥A
♦QJ1086
♣J10953

♠853
♥K10632
♦A3
♣AKQ

N
W—E
S

♠6
♥9754
♦K9752
♣862

♠AKQ10942
♥QJ8
♦4
♣74

Board (23) Av: NS=+450

N-S	E-W	Contract	N-S	E-W	IMP
1	2	5Hx	W-3	800	8
2	1	4S	S 4	620	5
3	4	4Sx	S 4	790	8
4	3	4Sx	S-1	200	-12
5	10	4S	S-1	100	-11
10	5	4S	S 5	650	5
6	7	4Sx	S 4	790	8
7	6	4S	S-1	100	-11
8	9	4Sx	S 4	790	8
9	8	3S	S 3	140	-7

24

♠7543
♥1042
♦K532
♣KJ

♠J10986
♥AQ96
♦98
♣108

N
W—E
S

♠AQ2
♥J853
♦QJ
♣Q954

♠K
♥K7
♦A10764
♣A7632

Board (24) Av: NS=+60

N-S	E-W	Contract	N-S	E-W	IMP
1	2	3D	S 5	150	3
2	1	4S	W-1	50	0
3	4	2H	E 2	110	-5
4	3	4H	E-2	100	1
5	10	2H	W 2	110	-5
10	5	4S	W-2	100	1
6	7	3H	E-1	50	0
7	6	3D	S 5	150	3
8	9	3S	W-1	50	0
9	8	3H	W-1	50	0

25

♠9543
♥A7
♦8743
♣932

♠KQ6
♥QJ10954
♦Q102
♣A

N
W—E
S

♠2
♥K632
♦K65
♣KJ754

♠AJ1087
♥8
♦AJ9
♣Q1086

Board (25) Av: NS=-330

N-S	E-W	Contract	N-S	E-W	IMP
1	2	5H	W-1	100	10
2	1	4H	W 4	620	-7
3	4	4S	N-3	150	5
4	3	4Sx	N-3	500	-5
5	10	4H	W 5	650	-8
10	5	3S	S-1	50	7
6	7	4H	W 5	650	-8
7	6	4S	S-3	150	5
8	9	5H	W-1	100	10
9	8	4H	W 4	620	-7

26

♠KJ9
♥QJ
♦KQ76
♣K1087

♠8762
♥75
♦AJ10952
♣5

N
W—E
S

♠Q10543
♥982
♦4
♣QJ94

♠A
♥AK10643
♦83
♣A632

Board (26) Av: NS=+580

N-S	E-W	Contract	N-S	E-W	IMP
1	2	5NT	N 6	690	3
2	1	6C	N-2	200	-13
3	4	4H	S 6	680	3
4	3	3NT	N 5	660	2
5	10	3NT	N 6	690	3
10	5	5C	S-1	100	-12
6	7	6NT	S 6	1440	13
7	6	4H	S 6	680	3
8	9	4H	S 6	680	3
9	8	3NT	N 5	660	2

27

♠J1054
♥975
♦Q73
♣A76

♠AKQ97
♥KJ8642
♦86
♣

N
W—E
S

♠2
♥Q103
♦A54
♣K109543

♠863
♥A
♦KJ1092
♣QJ82

Board (27) Av: NS=-450

N-S	E-W	Contract	N-S	E-W	IMP
1	2	4H	W 5	450	0
2	1	4H	W 6	480	-1
3	4	4H	W 5	450	0
4	3	4H	W 5	450	0
5	10	4H	W 5	450	0
10	5	5Cx	N-6	1400	-14
6	7	4H	W 5	450	0
7	6	2H	W 5	200	6
8	9	4H	W 5	450	0
9	8	4H	W 5	450	0

28

♠KQ1053
♥9
♦K10
♣K7654

♠J962
♥874
♦AQ
♣Q1098

N
W | E
S

♥Q10532
♦J9752
♣J32

♠A874
♥AKJ6
♦8643
♣A

Board (28) Av: NS=+660

N-S	E-W	Contract	N-S	E-W	IMP
1	2	4S	N 5	650	0
2	1	6S	N 6	1430	13
3	4	4S	N 5	650	0
4	3	4S	N 5	650	0
5	10	6S	N-1	100	-13
10	5	6S	N 6	1430	13
6	7	5S	N 5	650	0
7	6	6S	N 6	1430	13
8	9	5S	N-1	100	-13
9	8	6S	N-2	200	-13

29

♠1043
♥J86
♦K93
♣AK96

♠KJ86
♥Q92
♦1085
♣J87

N
W | E
S

♠AQ972
♥K107
♦J64
♣105

♠5
♥A543
♦AQ72
♣Q432

Board (29) Av: NS=+140

N-S	E-W	Contract	N-S	E-W	IMP
1	2	1NT	N 2	120	-1
2	1	2C	S 5	150	0
3	4	2NT	N 2	120	-1
4	3	3S	E-2	200	2
5	10	4C	S 4	130	0
10	5	2S	E-1	100	-1
6	7	3Sx	E-2	500	8
7	6	2C	S 5	150	0
8	9	2NT	N 2	120	-1
9	8	2NT	N 2	120	-1

30

♠AQ65
♥Q6
♦763
♣K942

♠K87
♥K104
♦AK108
♣753

N
W | E
S

♠94
♥AJ83
♦9542
♣Q108

♠J1032
♥9752
♦QJ
♣AJ6

Board (30) Av: NS=+50

N-S	E-W	Contract	N-S	E-W	IMP
1	2	2S	N 3	140	3
2	1	3D	W-1	50	0
3	4	2S	N 2	110	2
4	3	1NT	W 2	120	-5
5	10	1NT	W-2	100	2
10	5	2D	W 2	90	-4
6	7	1NT	E 1	90	-4
7	6	2D	W-1	50	0
8	9	2S	N 3	140	3
9	8	3D	W-2	100	2

31

♠103
♥AK1084
♦Q
♣A10976

♠K875
♥Q
♦J87652
♣QJ

N
W | E
S

♠A92
♥J93
♦K9
♣K8543

♠QJ64
♥7652
♦A1043
♣2

Board (31) Av: NS=+200

N-S	E-W	Contract	N-S	E-W	IMP
1	2	2H	N 4	170	-1
2	1	4H	N 4	620	9
3	4	4H	N 4	620	9
4	3	4H	N 4	620	9
5	10	4H	N-1	100	-7
10	5	4H	N-1	100	-7
6	7	4H	N-1	100	-7
7	6	2H	N 2	110	-3
8	9	2H	N 4	170	-1
9	8	3H	N 3	140	-2

32

♠J1062
♥2
♦Q109743
♣105

♠Q843
♥J9863
♦AJ
♣63

N
W | E
S

♠AK75
♥A54
♦85
♣AKQ7

♠9
♥KQ107
♦K62
♣J9842

Board (32) Av: NS=-630

N-S	E-W	Contract	N-S	E-W	IMP
1	2	4S	E 4	620	0
2	1	4S	E 4	620	0
3	4	4S	E 4	620	0
4	3	4S	E 5	650	-1
5	10	4H	E 4	620	0
10	5	4S	E 5	650	-1
6	7	4S	E 4	620	0
7	6	4S	E 4	620	0
8	9	4S	E 5	650	-1
9	8	4S	E 5	650	-1

33

♠AK10
♥AJ87
♦QJ93
♣K8

♠92
♥Q10643
♦K765
♣J2

N
W | E
S

♠J8743
♥K2
♦842
♣Q103

♠Q65
♥95
♦A10
♣A97654

Board (33) Av: NS=+440

N-S	E-W	Contract	N-S	E-W	IMP
1	2	3NT	S 4	430	0
2	1	3NT	N 5	460	1
3	4	3NT	S 4	430	0
4	3	3NT	S 5	460	1
5	10	3NT	S 4	430	0
10	5	3NT	S 4	430	0
6	7	3NT	N 5	460	1
7	6	3NT	S 4	430	0
8	9	3NT	S 4	430	0
9	8	3NT	S 4	430	0

34

♠1064
♥Q765
♦9654
♣Q6

♠KQJ93
♥J109
♦J2
♣AJ7

N
W | E
S

♠A752
♥A
♦KQ87
♣K954

♠8
♥K8432
♦A103
♣10832

Board (34) Av: NS=-600

N-S	E-W	Contract	N-S	E-W	IMP
1	2	4S	W 6	480	3
2	1	6S	W 6	980	-9
3	4	6S	W 6	980	-9
4	3	4S	W 5	450	4
5	10	6S	W-1	50	12
10	5	6S	W 6	980	-9
6	7	6S	W 6	980	-9
7	6	6S	W-1	50	12
8	9	4S	E 6	480	3
9	8	4S	E 6	480	3

35

♠653
♥KJ10964
♣AQ75

♠J1054
♥KQ10972
♦2
♣J4

N
W | E
S

♠AK3
♥AJ
♦A753
♣8632

♠Q98762
♥84
♦Q8
♣K109

Board (35) Av: NS=-490

N-S	E-W	Contract	N-S	E-W	IMP
1	2	5Cx	S-6	1400	-14
2	1	4H	E 4	620	-4
3	4	4Dx	N-2	300	5
4	3	4H	E-1	100	11
5	10	4H	W 4	620	-4
10	5	3NT	E 3	600	-3
6	7	3NT	E 3	600	-3
7	6	4H	W 4	620	-4
8	9	4H	W 4	620	-4
9	8	5H	E-1	100	11

36

♠KJ72
♥854
♦J3
♣A765

♠83
♥J6
♦K8642
♣Q1082

N
W | E
S

♠A104
♥Q932
♦Q107
♣K94

♠Q965
♥AK107
♦A95
♣J3

Board (36) Av: NS=+120

N-S	E-W	Contract	N-S	E-W	IMP
1	2	2S	N 2	110	0
2	1	2S	N 3	140	1
3	4	2S	N 2	110	0
4	3	2S	N 2	110	0
5	10	2S	N 3	140	1
10	5	3S	N-1	100	-6
6	7	2S	N 2	110	0
7	6	2S	N 3	140	1
8	9	2S	N 2	110	0
9	8	2S	N 2	110	0