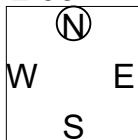


1

♠A104  
♥J963  
♦A765  
♣63

♠K53  
♥K10  
♦KQ8  
♣J10872

♠Q98762  
♥AQ42  
♦J2  
♣9



♠J  
♥875  
♦10943  
♣AKQ54

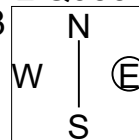
NS	EW	Contract	N-S	E-W	IMP
1	4	4S S 4	420		47
12	10	5C E-2	100		4
9	11	2NT E-2	100		4
8	14	4C E-1	50		-5
13	7	3C E 3		110	-25
3	2	3C E 3		110	-25

2

♠AQ7  
♥982  
♦K108  
♣Q953

♠4  
♥7653  
♦J962  
♣KJ82

♠952  
♥J104  
♦Q7543  
♣107



♠KJ10863  
♥AKQ  
♦A  
♣A64

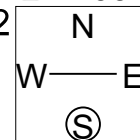
NS	EW	Contract	N-S	E-W	IMP
13	7	3NT E-1	50		53
1	4	4S W 4		420	-7
3	2	4S W 4		420	-7
9	11	4S W 5		450	-13
8	14	4S W 5		450	-13
12	10	4S W 5		450	-13

3

♠J65  
♥K6  
♦A95  
♣A7632

♠94  
♥A93  
♦J1042  
♣KQ95

♠AQ  
♥10854  
♦8763  
♣J108



♠K108732  
♥QJ72  
♦KQ  
♣4

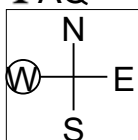
NS	EW	Contract	N-S	E-W	IMP
12	10	4S W-1	100		26
3	2	1NT S-1		50	6
9	11	2C N-2		100	-4
8	14	1NT N-2		100	-4
13	7	3S W 3		140	-11
1	4	2NT E 3		150	-13

4

♠KJ742  
♥J10852  
♦8  
♣AQ

♠Q10  
♥AKQ964  
♦K7  
♣942

♠A53  
♥7  
♦AQJ9632  
♣K7



♠986  
♥3  
♦1054  
♣J108653

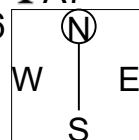
NS	EW	Contract	N-S	E-W	IMP
12	10	3NT N 5	660		28
3	2	4S N 5	650		28
13	7	4S N 4	620		22
8	14	4S N 4	620		22
9	11	4S N-1		100	-50
1	4	4S N-1		100	-50

5

♠AJ1072  
♥654  
♦AK3  
♣A7

♠53  
♥AK32  
♦Q84  
♣KJ96

♠94  
♥J987  
♦1076  
♣Q532



♠KQ86  
♥Q10  
♦J952  
♣1084

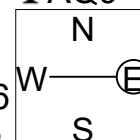
NS	EW	Contract	N-S	E-W	IMP
10	6	1NT N 2	120		17
1	7	1NT N 2	120		17
11	3	1NT N 1	90		11
5	9	1NT W-1	50		5
8	2	1NT N-1		100	-18
4	12	1NT N-2		200	-32

6

♠K6  
♥KQ109  
♦AJ104  
♣AQ9

♠A105  
♥532  
♦72  
♣J7642

♠Q8742  
♥874  
♦K53  
♣K5



♠J93  
♥AJ6  
♦Q986  
♣1083

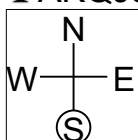
NS	EW	Contract	N-S	E-W	IMP
4	12	3NT N 5	460		7
8	2	3NT S 4	430		1
1	7	3NT N 4	430		1
11	3	3NT N 4	430		1
10	6	3NT N 3	400		-5
5	9	3NT N 3	400		-5

7

♠A1092  
♥A862  
♦AKQJ8  
♣AKQJ8

♠Q862  
♥J65  
♦QJ5  
♣943

♠K10943  
♥87  
♦1094  
♣752



♠AJ75  
♥KQ43  
♦K73  
♣106

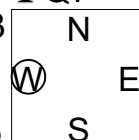
NS	EW	Contract	N-S	E-W	IMP
10	6	1NT N 3	150		10
11	3	3C N 3	110		4
8	2	3C N 3	110		4
4	12	3C N 3	110		4
5	9	2C N 3	110		4
1	7	4C S-1		100	-26

8

♠64  
♥QJ63  
♦KJ843  
♣Q7

♠KQ107  
♥AK1094  
♦9  
♣1032

♠982  
♥5  
♦AQ1065  
♣AK94



♠AJ53  
♥872  
♦72  
♣J865

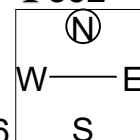
NS	EW	Contract	N-S	E-W	IMP
1	7	5Hx E-3	500		50
11	3	3H E-3	150		9
5	9	4D S 4	130		4
4	12	4D S 4	130		4
10	6	4H E-1	50		-5
8	2	2Hx E 3		570	-62

9

♠J954  
♥Q942  
♦A7  
♣852

♠AK3  
♥AK106  
♦QJ943  
♣4

♠Q107  
♥875  
♦K102  
♣10973

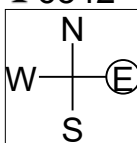


♠862  
♥J3  
♦865  
♣AKQJ6

NS	EW	Contract	N-S	E-W	IMP
10	8	5D E-1	100		63
7	9	5D E 5		600	-6
3	6	3NT W 3		600	-6
1	14	3NT W 5		660	-17
13	2	3NT W 5		660	-17
5	4	3NT E 5		660	-17

10

♠AJ97  
♥A95  
♦98  
♣6542



♠6  
♥K82  
♦KJ1075432  
♣Q

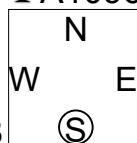
♠KQ  
♥QJ4  
♦Q  
♣AK109873

♠1085432  
♥10763  
♦A6  
♣J

NS	EW	Contract	N-S	E-W	IMP
1	14	5D E-1	100		12
5	4	5D E-1	100		12
13	2	5D E-1	100		12
3	6	5D E-1	100		12
7	9	5D E-1	100		12
10	8	3NT W 3		600	-60

11

♠K82  
♥AKQ  
♦AJ  
♣A10962



♠95  
♥J87  
♦Q109742  
♣54

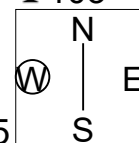
♠A106  
♥1064  
♦863  
♣KQJ8

♠QJ743  
♥9532  
♦K5  
♣73

NS	EW	Contract	N-S	E-W	IMP
1	14	4S N 5	450		2
5	4	4S N 5	450		2
3	6	4S N 5	450		2
10	8	4S N 5	450		2
13	2	3NT N 4	430		-4
7	9	3NT N 4	430		-4

12

♠AJ  
♥A1054  
♦Q9832  
♣103



♠Q97  
♥KJ6  
♦AKJ4  
♣AK6

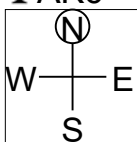
♠1052  
♥2  
♦765  
♣QJ9875

♠K8643  
♥Q9873  
♦10  
♣42

NS	EW	Contract	N-S	E-W	IMP
5	4	2NT E 3		150	23
13	2	2NT E 4		180	19
3	6	2NT E 4		180	19
10	8	3NT E 4		430	-17
1	14	3NT E 5		460	-22
7	9	3NT E 5		460	-22

13

♠K10  
♥Q62  
♦Q8762  
♣AK6



♠632  
♥AJ743  
♦5  
♣J982

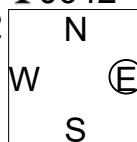
♠AQ754  
♥85  
♦A1093  
♣75

♠J98  
♥K109  
♦KJ4  
♣Q1043

NS	EW	Contract	N-S	E-W	IMP
12	6	3S W-3	300		47
9	1	1NT E 1		90	-6
5	11	1NT S-1		100	-6
4	14	1NT S-1		100	-6
2	10	1NT S-1		100	-6
13	3	3NT S-2		200	-23

14

♠Q5  
♥AQ94  
♦J109  
♣J642



♠A43  
♥K1087  
♦A63  
♣1087

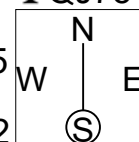
♠109862  
♥652  
♦K82  
♣95

♠KJ7  
♥J3  
♦Q754  
♣AKQ3

NS	EW	Contract	N-S	E-W	IMP
13	3	3NT S 3	400		51
5	11	3NT S-1		50	-8
12	6	3NT S-1		50	-8
4	14	3NT S-1		50	-8
2	10	3NT S-1		50	-8
9	1	3NT S-2		100	-19

15

♠QJ1095  
♥107  
♦QJ  
♣QJ75



♠K8  
♥A86  
♦9752  
♣10986

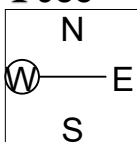
♠64  
♥KJ95  
♦K43  
♣K432

♠A732  
♥Q432  
♦A1086  
♣A

NS	EW	Contract	N-S	E-W	IMP
9	1	4S N 6	680		56
13	3	3S N 5	200		2
5	11	2S N 4	170		-3
4	14	2S N 3	140		-8
2	10	2S N 3	140		-8
12	6	4S N-1		100	-39

16

♠Q7  
♥J10873  
♦1098  
♣J85



♠J864  
♥AKQ5  
♦AQ7  
♣72

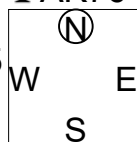
♠K1095  
♥64  
♦J64  
♣KQ103

♠A32  
♥92  
♦K532  
♣A964

NS	EW	Contract	N-S	E-W	IMP
5	11	4S W-1	100		49
13	3	4S W-1	100		49
9	1	4S W 4		620	-23
12	6	4S E 4		620	-23
4	14	4S E 4		620	-23
2	10	4S E 5		650	-29

17

♠QJ6  
♥43  
♦10762  
♣AK76



♠94  
♥108  
♦AKQJ95  
♣984

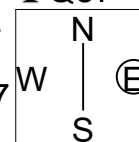
♠AK3  
♥AKJ765  
♦84  
♣J3

♠108752  
♥Q92  
♦3  
♣Q1052

NS	EW	Contract	N-S	E-W	IMP
3	7	4H W 4		420	5
14	12	4H W 4		420	5
1	5	4H W 4		420	5
8	4	4H W 5		450	-1
6	2	4H W 5		450	-1
11	13	4H W 7		510	-13

18

♠10  
♥KQ10653  
♦A106  
♣Q87



♠K83  
♥J87  
♦543  
♣J1043

♠AJ64  
♥9  
♦KQJ7  
♣9652

♠Q9752  
♥A42  
♦982  
♣AK

NS	EW	Contract	N-S	E-W	IMP
8	4	3NT N 4	630		20
6	2	3NT N 4	630		20
11	13	4H N 4	620		20
1	5	4H N 4	620		20
3	7	3H N 4	170		-40
14	12	3H N 4	170		-40

19

♠ J1073  
♥ 8  
♦ Q4  
♣ AK10962

♠ 4  
♥ AJ  
♦ AJ10762  
♣ J854

N  
W — E  
S (S)

♠ 965  
♥ KQ76  
♦ K98  
♣ Q73

♠ AKQ82  
♥ 1095432  
♦ 53  
♣

NS	EW	Contract	N-S	E-W	IMP
8	4	4S	S 4	420	26
3	7	4S	S 4	420	26
11	13	4S	S 4	420	26
1	5	3S	S 4	170	-6
14	12	4S	S-1	50	-36
6	2	3C	N-1	50	-36

20

♠ AK72  
♥ AK82  
♦ J963  
♣ 8

♠ J1063  
♥ QJ  
♦ 1052  
♣ Q542

N  
W — E  
S (S)

♠ Q84  
♥ 75  
♦ K87  
♣ AK1073

♠ 95  
♥ 109643  
♦ AQ4  
♣ J96

NS	EW	Contract	N-S	E-W	IMP
8	4	4H	N 6	680	43
1	5	4H	S 5	650	39
11	13	3H	S 6	230	-12
3	7	3C	E-2	200	-17
6	2	2H	S 4	170	-22
14	12	2C	E-1	100	-31

21

♠ 1083  
♥ K8754  
♦ A5  
♣ 1072

♠ A4  
♥ A32  
♦ KQJ873  
♣ 98

N  
W — E  
S (S)

♠ QJ65  
♥ J106  
♦ 64  
♣ AKQ4

♠ K972  
♥ Q9  
♦ 1092  
♣ J653

NS	EW	Contract	N-S	E-W	IMP
3	9	3NT	E 3	400	11
7	11	3NT	W 5	460	-1
12	8	3NT	E 5	460	-1
10	4	3NT	E 5	460	-1
6	14	3NT	E 5	460	-1
13	5	3NT	E 6	490	-7

22

♠ AJ9  
♥ A97  
♦ A10764  
♣ J7

♠ Q108763  
♥ K54  
♦  
♣ A532

N  
W — E  
S (S)

♠ K5  
♥ J62  
♦ QJ853  
♣ Q106

♠ 42  
♥ Q1083  
♦ K92  
♣ K984

NS	EW	Contract	N-S	E-W	IMP
6	14	1NT	N 3	150	34
10	4	2D	N-1	50	8
7	11	3NT	N-2	100	-1
3	9	2NT	N-2	100	-1
13	5	3D	N-3	150	-10
12	8	3Dx	N-2	300	-30

23

♠  
♥ KQJ1096  
♦ 653  
♣ KQ106

♠ AK6542  
♥ A4  
♦ 108  
♣ A52

N  
W — E  
S (S)

♠ Q987  
♥ 72  
♦ KQ942  
♣ 73

♠ J103  
♥ 853  
♦ AJ7  
♣ J984

NS	EW	Contract	N-S	E-W	IMP
6	14	4S	W-1	100	46
3	9	3S	W 4	170	14
10	4	2S	W 4	170	14
12	8	4Hx	N-1	200	10
7	11	4S	E 4	620	-40
13	5	4S	W 5	650	-44

24

♠ QJ72  
♥  
♦ KJ84  
♣ 109852

♠ AK  
♥ K1098642  
♦ A5  
♣ A6

N  
W — E  
S (S)

♠ 10953  
♥ Q7  
♦ 962  
♣ QJ43

♠ 864  
♥ AJ53  
♦ Q1073  
♣ K7

NS	EW	Contract	N-S	E-W	IMP
10	4	1H	W 3	140	4
13	5	1H	W 3	140	4
3	9	3H	W 4	170	-2
12	8	2H	W 4	170	-2
7	11	2H	W 4	170	-2
6	14	1H	W 4	170	-2

25

♠ A10  
♥ AQ6432  
♦ J8  
♣ AQ2

♠ KQ86  
♥ 9  
♦ Q975  
♣ 9854

N  
W — E  
S (S)

♠ 2  
♥ K87  
♦ A432  
♣ KJ1073

♠ J97543  
♥ J105  
♦ K106  
♣ 6

NS	EW	Contract	N-S	E-W	IMP
2	12	4H	N 4	420	19
5	8	4H	N 4	420	19
9	13	4H	N 4	420	19
14	10	3H	N 4	170	-17
7	6	3H	N 4	170	-17
11	1	3H	N 3	140	-23

26

♠ Q10  
♥ AQJ7  
♦ AJ93  
♣ 742

♠ 3  
♥ K842  
♦ Q105  
♣ AQJ103

N  
W — E  
S (S)

♠ 876  
♥ 63  
♦ K8762  
♣ 986

♠ AKJ9542  
♥ 1095  
♦ 4  
♣ K5

NS	EW	Contract	N-S	E-W	IMP
2	12	4S	S 6	680	2
7	6	4S	S 6	680	2
5	8	4S	S 6	680	2
9	13	4S	S 6	680	2
14	10	4S	S 5	650	-4
11	1	4S	S 5	650	-4

27

♠ J1043  
♥ KJ93  
♦ 86  
♣ AQ2

♠ A8  
♥ Q652  
♦ AKQ104  
♣ K10

N  
W — E  
S (S)

♠ KQ9762  
♥ 8  
♦ J72  
♣ J97

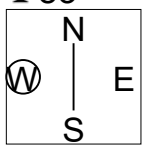
♠ 5  
♥ A1074  
♦ 953  
♣ 86543

NS	EW	Contract	N-S	E-W	IMP
14	10	4S	E-1	50	22
11	1	4S	E-1	50	22
7	6	4S	E-1	50	22
9	13	4S	E-1	50	22
2	12	4S	E 5	450	-44
5	8	3NT	W 5	460	-44

28

♠ 6543  
 ♥ K7  
 ♦ 98752  
 ♣ 83

♠ QJ10972  
 ♥ Q1085  
 ♦  
 ♣ AKJ



♠ 8  
 ♥ J6432  
 ♦ J1063  
 ♣ Q97

♠ AK  
 ♥ A9  
 ♦ AKQ4  
 ♣ 106542

NS	EW	Contract	N-S	E-W	IMP
9	13	2NT S 2	120		26
7	6	3H W-1	50		16
14	10	3NT S-1		100	-8
2	12	3C S-1		100	-8
5	8	3H W 3		140	-13
11	1	2S W 3		140	-13

**1**

♠K2  
♥Q52  
♦AJ10  
♣AK654

♠A96  
♥K10974  
♦8  
♣Q1092

♠J53  
♥J86  
♦KQ9632  
♣J

W N E S

♠Q10874  
♥A3  
♦754  
♣873

NS	EW	Contract	N-S	E-W	IMP
12	3	3D W-3	150		9
5	10	2S N 3	140		8
2	14	2S N 2	110		2
13	1	2S N 2	110		2
9	6	3Hx E-1	100		1
4	11	2S N-1		50	-22

**2**

♠109632  
♥J5  
♦73  
♣A1065

♠AQ874  
♥107  
♦AK6  
♣KQ9

♠5  
♥KQ9863  
♦984  
♣832

W N E S

♠KJ  
♥A42  
♦QJ1052  
♣J74

NS	EW	Contract	N-S	E-W	IMP
5	10	2NT E-2	100		29
13	1	2NT W-1	50		21
2	14	2H W 3		140	-7
4	11	3H W 4		170	-13
9	6	2H E 4		170	-13
12	3	2H W 5		200	-17

**3**

♠J10  
♥86  
♦QJ8765  
♣Q93

♠A73  
♥K107  
♦10932  
♣A76

♠KQ962  
♥QJ53  
♦K  
♣KJ5

W N E S

♠854  
♥A942  
♦A4  
♣10842

NS	EW	Contract	N-S	E-W	IMP
5	10	4S W 4		620	0
12	3	4S W 4		620	0
2	14	4S W 4		620	0
4	11	4S W 4		620	0
9	6	3NT E 4		630	0
13	1	3NT E 4		630	0

**4**

♠3  
♥K108542  
♦Q9854  
♣8

♠Q875  
♥Q  
♦A762  
♣AK95

♠64  
♥A73  
♦KJ10  
♣QJ762

W N E S

♠AKJ1092  
♥J96  
♦3  
♣1043

NS	EW	Contract	N-S	E-W	IMP
5	10	3Hx N 3	730		70
2	14	5C E-1	100		21
4	11	3NT E-1	100		21
13	1	2NT E 3		150	-1
9	6	3NT E 4		630	-40
12	3	4Hx N-4		1100	-71

**5**

♠QJ5432  
♥A  
♦A64  
♣K87

♠K1086  
♥954  
♦Q982  
♣J10

♠7  
♥J832  
♦K1075  
♣A963

W N E S

♠A9  
♥KQ1076  
♦J3  
♣Q542

NS	EW	Contract	N-S	E-W	IMP
4	13	4S N 4	620		51
14	3	4S N 4	620		51
11	6	4S N-1		100	-16
5	12	4S N-1		100	-16
10	7	3NT N-2		200	-29
8	9	4S N-3		300	-41

**6**

♠KJ2  
♥K76  
♦KJ1097  
♣AK

♠Q53  
♥1092  
♦A543  
♣1043

♠A108  
♥AJ3  
♦2  
♣QJ9762

W N E S

♠9764  
♥Q854  
♦Q86  
♣85

NS	EW	Contract	N-S	E-W	IMP
10	7	2H S 2	110		8
14	3	2D N 2	90		3
4	13	1NT N 1	90		3
11	6	1NT N 1	90		3
5	12	1NT N 1	90		3
8	9	2D N-1		50	-20

**7**

♠J3  
♥Q10743  
♦1086  
♣1065

♠KQ82  
♥J95  
♦Q9  
♣QJ93

♠A9654  
♥A86  
♦K42  
♣K4

W N E S

♠107  
♥K2  
♦AJ753  
♣A872

NS	EW	Contract	N-S	E-W	IMP
10	7	2S W 4		170	32
5	12	3S W 5		200	29
11	6	2S W 5		200	29
4	13	4S W 5		650	-30
8	9	4S W 5		650	-30
14	3	4S W 5		650	-30

**8**

♠QJ84  
♥103  
♦J72  
♣AJ83

♠AK732  
♥J754  
♦Q105  
♣Q

♠105  
♥Q962  
♦AK3  
♣K762

W N E S

♠96  
♥AK8  
♦9864  
♣10954

NS	EW	Contract	N-S	E-W	IMP
11	6	4S W-2	100		20
10	7	4H E-2	100		20
4	13	3NT W-2	100		20
14	3	4H E-1	50		10
8	9	2H E 4		170	-21
5	12	4H E 4		420	-49

**9**

♠KJ  
♥A1042  
♦KJ10  
♣K1087

♠Q  
♥K76  
♦9762  
♣AQJ52

♠9762  
♥QJ8  
♦A543  
♣93

W N E S

♠A108543  
♥953  
♦Q8  
♣64

NS	EW	Contract	N-S	E-W	IMP
12	7	2S N 3	140		12
5	14	2S N 3	140		12
13	6	2S N 3	140		12
8	11	2S N 2	110		6
2	4	3NT N-1		50	-17
3	1	2S N-2		100	-25

10

♠ J9  
♥ K75  
♦ Q10765  
♣ Q87

♠ AKQ42  
♥ A32  
♦ K9  
♣ 932

N  
W — E  
S

♠ 1083  
♥ J1086  
♦ 32  
♣ AJ64

♠ 765  
♥ Q94  
♦ AJ84  
♣ K105

NS	EW	Contract	N-S	E-W	IMP
12	7	1NT W 2		120	5
5	14	1NT W 2		120	5
13	6	1NT W 2		120	5
8	11	2S W 3		140	-1
2	4	3S W 4		170	-7
3	1	2S W 4		170	-7

11

♠ 8  
♥ J9843  
♦ A9  
♣ KQ1096

♠ AKJ1094  
♥ K2  
♦ 76  
♣ 542

N  
W — E  
S

♠ Q76532  
♥ 7  
♦ KJ52  
♣ A3

♠ AQ1065  
♥ Q10843  
♣ J87

NS	EW	Contract	N-S	E-W	IMP
3	1	5Hx S 5	650		59
12	7	6Sx W-2	300		27
2	4	5S W-1	50		-1
5	14	6H S-1		50	-12
8	11	6Cx N-1		100	-20
13	6	4S W 4		420	-53

12

♠ KJ96  
♥ A3  
♦ A10972  
♣ 43

♠ A1054  
♥ Q1095  
♦  
♣ KQ762

N  
W — E  
S

♠ Q732  
♥ 84  
♦ KJ85  
♣ J85

♠ 8  
♥ KJ762  
♦ Q643  
♣ A109

NS	EW	Contract	N-S	E-W	IMP
8	11	3D N 3	110		9
13	6	3S E-2	100		9
2	4	3S E-2	100		9
12	7	3NT E-2	100		9
3	1	2S E-1	50		-2
5	14	1NT S-2		200	-34

13

♠ J92  
♥ QJ10  
♦ KQ1052  
♣ K10

♠ 7653  
♥ A7432  
♦ 3  
♣ 642

N  
W — E  
S

♠ 8  
♥ 95  
♦ AJ874  
♣ AQJ85

♠ AKQ104  
♥ K86  
♦ 96  
♣ 973

NS	EW	Contract	N-S	E-W	IMP
11	10	4S S-1		100	9
9	12	4S S-1		100	9
6	1	3S S-1		100	9
13	8	4S S-2		200	-9
2	5	4S S-2		200	-9
7	14	4S S-2		200	-9

14

♠ 32  
♥ 103  
♦ QJ109542  
♣ A9

♠ 106  
♥ 86542  
♦ 86  
♣ 8654

N  
W — E  
S

♠ AKQ74  
♥ J9  
♦ AK  
♣ KJ32

♠ J985  
♥ AKQ7  
♦ 73  
♣ Q107

NS	EW	Contract	N-S	E-W	IMP
6	1	4S E-2	100		12
2	5	4S E-2	100		12
7	14	3S E-2	100		12
9	12	3H E-2	100		12
11	10	2NT E 2		120	-23
13	8	3H E 3		140	-25

15

♠ 108  
♥ 643  
♦ KQ105  
♣ 7643

♠ Q32  
♥ A72  
♦ J8762  
♣ A9

N  
W — E  
S

♠ J94  
♥ 95  
♦ A93  
♣ KQJ82

♠ AK765  
♥ KQJ108  
♦ 4  
♣ 105

NS	EW	Contract	N-S	E-W	IMP
11	10	4D W-3	150		16
13	8	3NT W-3	150		16
7	14	2H S 3	140		16
2	5	1S S 1	80		6
9	12	3H S-1		100	-20
6	1	3H S-2		200	-34

16

♠ J9643  
♥ 10654  
♦ Q  
♣ A43

♠ K85  
♥ KQ3  
♦ K87  
♣ J1086

N  
W — E  
S

♠ AQ10  
♥ AJ987  
♦ J93  
♣ 92

♠ 72  
♥ 2  
♦ A106542  
♣ KQ75

NS	EW	Contract	N-S	E-W	IMP
11	10	4H E-2	200		36
2	5	4H E-2	200		36
9	12	4H E-1	100		23
13	8	2H E 2		110	3
6	1	4H E 4		620	-49
7	14	4H E 4		620	-49

17

♠ K1096  
♥ Q82  
♦ Q3  
♣ K1074

♠ AQ7  
♥ 96  
♦ 10752  
♣ J852

N  
W — E  
S

♠ J32  
♥ KJ543  
♦ A984  
♣ 9

♠ 854  
♥ A107  
♦ KJ6  
♣ AQ63

NS	EW	Contract	N-S	E-W	IMP
10	13	3C S 3	110		10
7	2	2S N 2	110		10
14	9	1NT S 1	90		6
1	8	1NT S 1	90		6
6	4	3NT N-1		50	-16
3	5	3C S-1		50	-16

18

♠ 6543  
♥ 64  
♦ 432  
♣ J652

♠ 9872  
♥ Q1098  
♦ J9  
♣ Q98

N  
W — E  
S

♠ AJ  
♥ A753  
♦ KQ1085  
♣ K3

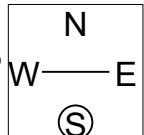
♠ KQ10  
♥ KJ2  
♦ A76  
♣ A1074

NS	EW	Contract	N-S	E-W	IMP
10	13	2D E 3		110	7
7	2	1NT E 2		120	6
1	8	1NT E 2		120	6
14	9	1NT E 3		150	1
3	5	1NT S-2		200	-9
6	4	1NT E 5		210	-11

19

♠64  
♥J4  
♦AQ9852  
♣532

♠1073  
♥AK853  
♦1073  
♣J10



♠A92  
♥Q762  
♦K64  
♣A96

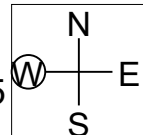
♠KQJ85  
♥109  
♦J  
♣KQ874

Table with 7 columns: NS, EW, Contract, N-S, E-W, IMP. Rows show various card combinations and their corresponding IMP values.

20

♠1043  
♥KQ109874  
♦K9  
♣4

♠A96  
♥2  
♦AJ1085  
♣AK93



♠Q52  
♥J5  
♦Q732  
♣Q1082

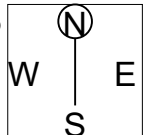
♠KJ87  
♥A63  
♦64  
♣J765

Table with 7 columns: NS, EW, Contract, N-S, E-W, IMP. Rows show various card combinations and their corresponding IMP values.

21

♠962  
♥94  
♦AQ1076  
♣642

♠K543  
♥J65  
♦K53  
♣J75



♠J10  
♥KQ1087  
♦J2  
♣AQ98

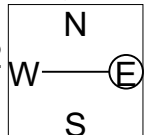
♠AQ87  
♥A32  
♦984  
♣K103

Table with 7 columns: NS, EW, Contract, N-S, E-W, IMP. Rows show various card combinations and their corresponding IMP values.

22

♠AQJ3  
♥J10865  
♦A6  
♣Q6

♠K9432  
♥K9432  
♦Q743  
♣J984



♠97642  
♥AQ  
♦K985  
♣72

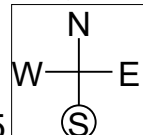
♠K1085  
♥7  
♦J102  
♣AK1053

Table with 7 columns: NS, EW, Contract, N-S, E-W, IMP. Rows show various card combinations and their corresponding IMP values.

23

♠1087643  
♥J75  
♦KQ5  
♣Q

♠Q9  
♥A8  
♦A762  
♣AJ985



♠AJ2  
♥10643  
♦J10  
♣K1032

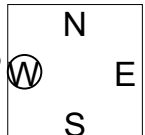
♠K5  
♥KQ92  
♦9843  
♣764

Table with 7 columns: NS, EW, Contract, N-S, E-W, IMP. Rows show various card combinations and their corresponding IMP values.

24

♠A  
♥K73  
♦AKQ8742  
♣K3

♠10842  
♥AQJ98  
♦Q975  
♣Q975



♠Q7653  
♥6542  
♦6  
♣A104

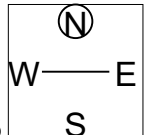
♠KJ9  
♥10  
♦J10953  
♣J862

Table with 7 columns: NS, EW, Contract, N-S, E-W, IMP. Rows show various card combinations and their corresponding IMP values.

25

♠A10962  
♥J53  
♦Q105  
♣95

♠K  
♥K107  
♦J642  
♣KQ743



♠J53  
♥A964  
♦K97  
♣J106

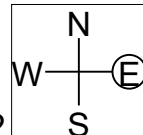
♠Q874  
♥Q82  
♦A83  
♣A82

Table with 7 columns: NS, EW, Contract, N-S, E-W, IMP. Rows show various card combinations and their corresponding IMP values.

26

♠Q105  
♥QJ109864  
♦9  
♣73

♠K2  
♥K2  
♦AJ652  
♣AK9842



♠AJ873  
♥A53  
♦KQ7  
♣Q6

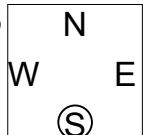
♠K9642  
♥7  
♦10843  
♣J105

Table with 7 columns: NS, EW, Contract, N-S, E-W, IMP. Rows show various card combinations and their corresponding IMP values.

27

♠Q932  
♥942  
♦K1083  
♣K6

♠A865  
♥AQ5  
♦642  
♣AQJ



♠7  
♥KJ863  
♦AJ95  
♣753

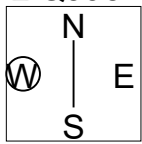
♠KJ104  
♥107  
♦Q7  
♣109842

Table with 7 columns: NS, EW, Contract, N-S, E-W, IMP. Rows show various card combinations and their corresponding IMP values.

28

♠ A106  
 ♥ Q10542  
 ♦ J  
 ♣ QJ95

♠ KQJ5  
 ♥ AK97  
 ♦ 543  
 ♣ A8



♠ 87  
 ♥ J86  
 ♦ K62  
 ♣ K7632

♠ 9432  
 ♥ 3  
 ♦ AQ10987  
 ♣ 104

NS	EW	Contract	N-S	E-W	IMP
7	5	2NT W-1	50		28
11	2	1NT W 1		90	6
9	4	1NT W 1		90	6
3	10	1NT W 1		90	6
1	12	1NT W 2		120	1
6	8	2H N-5		500	-47