

1

♠AQ976
♥A7
♦Q8
♣J873

♠83
♥KQ32
♦AJ32
♣K64

♠J52
♥104
♦K109754
♣109

W N E S

♠K104
♥J9865
♦6
♣AQ52

NS	EW	Contract	N-S	E-W	IMP
4	1	2S	N 2	110	7
3	2	3H	W 4	170	-7

2

♠92
♥A64
♦KJ102
♣J753

♠AQ108
♥QJ93
♦A7
♣A96

♠K743
♥52
♦943
♣Q1084

W N E S

♠J65
♥K1087
♦Q865
♣K2

NS	EW	Contract	N-S	E-W	IMP
4	1	4H	E 4	420	0
3	2	4H	E 4	420	0

3

♠QJ852
♥Q10984
♦65
♣7

♠A9
♥AKJ76
♦J7
♣AJ42

♠63
♥5
♦A10982
♣KQ1095

W N E S

♠K1074
♥32
♦KQ43
♣863

NS	EW	Contract	N-S	E-W	IMP
3	2	3H	E-1	100	7
4	1	3S	N-4	200	-7

4

♠AKQ2
♥AK654
♦3
♣Q96

♠J4
♥Q2
♦Q109542
♣K52

♠987
♥J1083
♦AK7
♣A104

W N E S

♠10653
♥97
♦J86
♣J873

NS	EW	Contract	N-S	E-W	IMP
4	1	6H	N 6	1430	0
3	2	6H	N 6	1430	0

5

♠1086
♥K865
♦A3
♣K983

♠K32
♥104
♦52
♣QJ10742

♠QJ7
♥AQJ9
♦10764
♣A6

W N E S

♠A954
♥732
♦KQJ98
♣5

NS	EW	Contract	N-S	E-W	IMP
3	2	3C	E-2	100	5
4	1	4H	N-1	100	-5

6

♠QJ9
♥85
♦KQJ6
♣KQJ10

♠K106
♥976
♦A1043
♣542

♠A7432
♥AQ43
♦95
♣A6

W N E S

♠85
♥KJ102
♦872
♣9873

NS	EW	Contract	N-S	E-W	IMP
4	1	4S	S 4	420	1
3	2	3NT	N 3	400	-1

7

♠1087
♥87632
♦74
♣A73

♠642
♥A109
♦A652
♣Q62

♠QJ9
♥54
♦KQJ83
♣K85

W N E S

♠AK53
♥KQJ
♦109
♣J1094

NS	EW	Contract	N-S	E-W	IMP
3	2	1NT	E 1	90	1
4	1	1H	E 2	110	-1

8

♠K42
♥Q762
♦J873
♣KQ

♠QJ86
♥8
♦AK54
♣J1085

♠73
♥AK94
♦102
♣76432

W N E S

♠A1095
♥J1053
♦Q96
♣A9

NS	EW	Contract	N-S	E-W	IMP
4	1	Passout			3
3	2	1NT	W 1	90	-3

9

♠QJ876
♥A42
♦J642
♣10

♠K1054
♥K
♦K10975
♣AQJ

♠32
♥Q109863
♦Q
♣9832

W N E S

♠A9
♥J75
♦A83
♣K7654

NS	EW	Contract	N-S	E-W	IMP
4	1	5C	W 5	600	2
3	2	3NT	E 5	660	-2

10

♠642
♥KQ873
♦43
♣K72

♠J
♥AJ102
♦AQ5
♣Q9864

♠A9753
♥9
♦KJ97
♣1053

W N E S

♠KQ108
♥654
♦10862
♣AJ

NS	EW	Contract	N-S	E-W	IMP
1	3	1NT	E 3	150	2
4	2	2S	S-2	200	-2

11

♠987
♥109
♦AQ6432
♣53

♠J1063
♥A652
♦K87
♣62

♠AKQ52
♥K7
♦J109
♣AQ7

W N E S

♠4
♥QJ843
♦5
♣KJ10984

NS	EW	Contract	N-S	E-W	IMP
1	3	4S	S-1	50	0
4	2	4S	S-1	50	0

12

♠743
♥KJ962
♦976
♣Q8

♠QJ96
♥Q10
♦K843
♣A103

♠A85
♥8753
♦A10
♣9764

W N E S

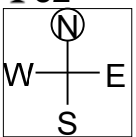
♠K102
♥A4
♦QJ52
♣KJ52

NS	EW	Contract	N-S	E-W	IMP
1	3	3NT	W-1	50	0
4	2	3NT	W-1	50	0

13

♠AK76
♥Q10983
♦105
♣82

♠4
♥AJ54
♦A87642
♣J3



♠Q10982
♥
♦J93
♣A9654

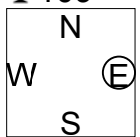
♠J53
♥K762
♦KQ
♣KQ107

Table with 6 columns: NS, EW, Contract, N-S, E-W, IMP. Rows show scores for two different contracts.

14

♠1064
♥874
♦K8652
♣109

♠Q752
♥1096
♦AQJ9
♣K4



♠AK3
♥Q2
♦1074
♣AQJ63

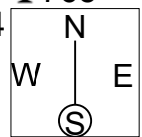
♠J98
♥AKJ53
♦3
♣8752

Table with 6 columns: NS, EW, Contract, N-S, E-W, IMP. Rows show scores for two different contracts.

15

♠10875
♥K7
♦K743
♣765

♠AQJ64
♥AQ6
♦86
♣843



♠K32
♥J85
♦QJ9
♣AKQ10

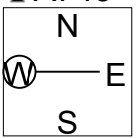
♠9
♥109432
♦A1052
♣J92

Table with 6 columns: NS, EW, Contract, N-S, E-W, IMP. Rows show scores for two different contracts.

16

♠62
♥K86
♦A965
♣A743

♠98
♥Q10954
♦KQ7
♣K98



♠KJ
♥AJ2
♦J1082
♣QJ102

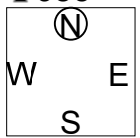
♠AQ107543
♥73
♦43
♣65

Table with 6 columns: NS, EW, Contract, N-S, E-W, IMP. Rows show scores for two different contracts.

17

♠9862
♥K98
♦K75
♣J85

♠J4
♥J763
♦AQJ103
♣96



♠AK73
♥A104
♦962
♣AK10

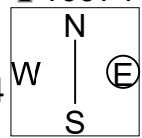
♠Q105
♥Q52
♦84
♣Q7432

Table with 6 columns: NS, EW, Contract, N-S, E-W, IMP. Rows show scores for two different contracts.

18

♠A1042
♥J82
♦A3
♣10974

♠Q83
♥AQ4
♦10764
♣853



♠965
♥65
♦Q982
♣AQJ6

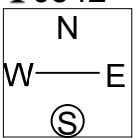
♠KJ7
♥K10973
♦KJ5
♣K2

Table with 6 columns: NS, EW, Contract, N-S, E-W, IMP. Rows show scores for two different contracts.

19

♠K106
♥106
♦A652
♣J542

♠Q542
♥843
♦J743
♣A9



♠98
♥AQJ72
♦109
♣8763

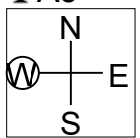
♠AJ73
♥K95
♦KQ8
♣KQ10

Table with 6 columns: NS, EW, Contract, N-S, E-W, IMP. Rows show scores for two different contracts.

20

♠Q953
♥87654
♦K7
♣A3

♠102
♥QJ92
♦1052
♣KJ82



♠AKJ64
♥10
♦93
♣Q10754

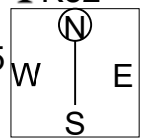
♠87
♥AK3
♦AQJ864
♣96

Table with 6 columns: NS, EW, Contract, N-S, E-W, IMP. Rows show scores for two different contracts.

21

♠K732
♥942
♦A94
♣K82

♠8
♥Q1065
♦QJ53
♣9543



♠J94
♥KJ83
♦K1062
♣J6

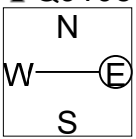
♠AQ1065
♥A7
♦87
♣AQ107

Table with 6 columns: NS, EW, Contract, N-S, E-W, IMP. Rows show scores for two different contracts.

22

♠AJ9
♥A52
♦6
♣QJ10532

♠K865
♥986
♦AQ1084
♣8



♠72
♥Q10
♦975
♣AK9764

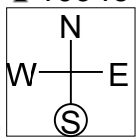
♠Q1043
♥KJ743
♦KJ32
♣

Table with 6 columns: NS, EW, Contract, N-S, E-W, IMP. Rows show scores for two different contracts.

23

♠A42
♥AK92
♦AJ
♣10943

♠J109
♥Q8
♦K54
♣AK865



♠83
♥543
♦Q10987
♣QJ7

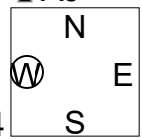
♠KQ765
♥J1076
♦632
♣2

Table with 6 columns: NS, EW, Contract, N-S, E-W, IMP. Rows show scores for two different contracts.

24

♠9874
♥10542
♦K104
♣AJ

♠Q10
♥K3
♦AQ3
♣Q107654



♠AKJ2
♥AJ97
♦762
♣82

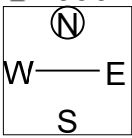
♠653
♥Q86
♦J985
♣K93

Table with 6 columns: NS, EW, Contract, N-S, E-W, IMP. Rows show scores for two different contracts.

25

♠AK9
♥K96
♦AK8
♣KJ96

♠QJ42
♥J105
♦Q63
♣Q87



♠1053
♥A74
♦10754
♣A52

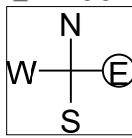
♠876
♥Q832
♦J92
♣1043

NS	EW	Contract	N-S	E-W	IMP
4	3	2NT N 3	150		0
2	1	2NT N 3	150		0

26

♠Q109
♥73
♦KQ10
♣A10943

♠J732
♥KJ102
♦A8
♣652



♠A86
♥Q9864
♦9653
♣7

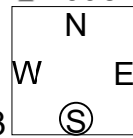
♠K54
♥A5
♦J742
♣KQJ8

NS	EW	Contract	N-S	E-W	IMP
2	1	3NT N 3	600		13
4	3	3NT N-2		200	-13

27

♠KQ5
♥KQJ8
♦93
♣KJ98

♠98
♥753
♦876
♣A10743



♠J72
♥A1094
♦Q1042
♣52

♠A10643
♥62
♦AKJ5
♣Q6

NS	EW	Contract	N-S	E-W	IMP
4	3	4S S 5	450		0
2	1	4S S 5	450		0

<p>1 N/-</p> <p>♠ AQ976 ♥ A7 ♦ Q8 ♣ J873</p> <p>♠ KT4 ♥ J9865 ♦ 6 ♣ AQ52</p> <p>♠ 83 ♥ KQ32 ♦ AJ32 ♣ K64</p> <p>♠ J52 ♥ T4 ♦ KT9754 ♣ T9</p> <p>13 10 13 4</p> <p>N S N 4 4 ♥ 8 8 ♦ 3 3 ♣ 8 8 4 4</p> <p>Opt res: NS 4SX;-300</p> <p>E W N 6 8 ♥ 5 5 ♦ 10 10 ♣ 5 5 9 9</p>	<p>2 E/NS</p> <p>♠ 92 ♥ A64 ♦ KJT2 ♣ J753</p> <p>♠ J65 ♥ KT87 ♦ Q865 ♣ K2</p> <p>♠ AQT8 ♥ QJ93 ♦ A7 ♣ A96</p> <p>♠ K743 ♥ 52 ♦ 943 ♣ QT84</p> <p>9 9 17 5</p> <p>N S N 4 4 ♥ 4 4 ♦ 3 3 ♣ 6 6 7 7</p> <p>Opt res: EW 4H;-420</p> <p>E W N 9 9 ♥ 9 9 ♦ 10 10 ♣ 7 7 6 6</p>	<p>3 S/EW</p> <p>♠ QJ852 ♥ QT984 ♦ 65 ♣ 7</p> <p>♠ KT74 ♥ 32 ♦ KQ43 ♣ 863</p> <p>♠ A9 ♥ AKJ76 ♦ J7 ♣ AJ42</p> <p>♠ 63 ♥ 5 ♦ AT982 ♣ KQT95</p> <p>5 8 18 9</p> <p>N S N 4 4 ♥ 4 4 ♦ 4 4 ♣ 5 5 5 5</p> <p>Opt res: EW 3N;-600</p> <p>E W N 9 9 ♥ 8 7 ♦ 9 8 ♣ 8 7 8 8</p>
<p>4 W/All</p> <p>♠ AKQ2 ♥ AK654 ♦ 3 ♣ Q96</p> <p>♠ T653 ♥ 97 ♦ J86 ♣ J873</p> <p>♠ J4 ♥ Q2 ♦ QT9542 ♣ K52</p> <p>♠ 987 ♥ JT83 ♦ AK7 ♣ AT4</p> <p>18 2 8 12</p> <p>N S N 12 12 ♥ 12 12 ♦ 12 12 ♣ 9 9 10 10</p> <p>Opt res: NS 6N;1440</p> <p>E W N 1 1 ♥ 1 1 ♦ 1 1 ♣ 4 4 2 2</p>	<p>5 N/NS</p> <p>♠ T86 ♥ K865 ♦ A3 ♣ K983</p> <p>♠ A954 ♥ 732 ♦ KQJ98 ♣ 5</p> <p>♠ K32 ♥ T4 ♦ 52 ♣ QJT742</p> <p>♠ QJ7 ♥ AQJ9 ♦ T764 ♣ A6</p> <p>10 10 6 14</p> <p>N S N 7 7 ♥ 7 7 ♦ 9 9 ♣ 6 6 6 6</p> <p>Opt res: NS 2H;140</p> <p>E W N 6 6 ♥ 6 6 ♦ 4 4 ♣ 7 7 7 7</p>	<p>6 E/EW</p> <p>♠ QJ9 ♥ 85 ♦ KQJ6 ♣ KQJT</p> <p>♠ 85 ♥ KJT2 ♦ 872 ♣ 9873</p> <p>♠ KT6 ♥ 976 ♦ AT43 ♣ 542</p> <p>♠ A7432 ♥ AQ43 ♦ 95 ♣ A6</p> <p>15 4 7 14</p> <p>N S N 9 10 ♥ 10 11 ♦ 9 9 ♣ 10 9 10 10</p> <p>Opt res: S 4S;450</p> <p>E W N 3 3 ♥ 2 2 ♦ 4 4 ♣ 3 3 3 3</p>
<p>7 S/All</p> <p>♠ T87 ♥ 87632 ♦ 74 ♣ A73</p> <p>♠ AK53 ♥ KQJ ♦ T9 ♣ JT94</p> <p>♠ 642 ♥ AT9 ♦ A652 ♣ Q62</p> <p>♠ QJ9 ♥ 54 ♦ KQJ83 ♣ K85</p> <p>4 14 10 12</p> <p>N S N 6 6 ♥ 4 4 ♦ 5 5 ♣ 7 7 4 4</p> <p>Opt res: EW 1S;-110</p> <p>E W N 7 7 ♥ 8 8 ♦ 7 7 ♣ 6 6 8 8</p>	<p>8 W/-</p> <p>♠ K42 ♥ Q762 ♦ J873 ♣ KQ</p> <p>♠ AT95 ♥ JT53 ♦ Q96 ♣ A9</p> <p>♠ QJ86 ♥ 8 ♦ AK54 ♣ JT85</p> <p>♠ 73 ♥ AK94 ♦ T2 ♣ 76432</p> <p>11 11 11 7</p> <p>N S N 5 5 ♥ 3 3 ♦ 7 7 ♣ 5 5 6 6</p> <p>Opt res: EW 4S;-420</p> <p>E W N 8 8 ♥ 10 10 ♦ 5 5 ♣ 8 8 7 7</p>	<p>9 N/EW</p> <p>♠ QJ876 ♥ A42 ♦ J642 ♣ T</p> <p>♠ A9 ♥ J75 ♦ A83 ♣ K7654</p> <p>♠ KT54 ♥ K ♦ KT975 ♣ AQJ</p> <p>♠ 32 ♥ QT9863 ♦ Q ♣ 9832</p> <p>8 12 16 4</p> <p>N S N - - ♥ 4 4 ♦ 7 7 ♣ - - - -</p> <p>Opt res: NS 6HX;-1100</p> <p>E W N 11 11 ♥ 9 9 ♦ 6 6 ♣ 12 12 11 11</p>
<p>10 E/All</p> <p>♠ 642 ♥ KQ873 ♦ 43 ♣ K72</p> <p>♠ KQT8 ♥ 654 ♦ T862 ♣ AJ</p> <p>♠ J ♥ AJT2 ♦ AQ5 ♣ Q9864</p> <p>♠ A9753 ♥ 9 ♦ KJ97 ♣ T53</p> <p>8 10 14 8</p> <p>N S N 4 4 ♥ 6 6 ♦ 5 5 ♣ 4 4 4 4</p> <p>Opt res: EW 3N;-600</p> <p>E W N 9 9 ♥ 7 7 ♦ 8 8 ♣ 8 8 9 8</p>	<p>11 S/-</p> <p>♠ 987 ♥ T9 ♦ AQ6432 ♣ 53</p> <p>♠ 4 ♥ QJ843 ♦ 5 ♣ KJT984</p> <p>♠ JT63 ♥ A652 ♦ K87 ♣ 62</p> <p>♠ AKQ52 ♥ K7 ♦ JT9 ♣ AQ7</p> <p>6 7 8 19</p> <p>N S N 7 7 ♥ 9 9 ♦ 4 4 ♣ 10 10 4 5</p> <p>Opt res: E 4HX;100</p> <p>E W N 3 3 ♥ 4 4 ♦ 9 8 ♣ 2 2 8 8</p>	<p>12 W/NS</p> <p>♠ 743 ♥ KJ962 ♦ 976 ♣ Q8</p> <p>♠ KT2 ♥ A4 ♦ QJ52 ♣ KJ52</p> <p>♠ QJ96 ♥ QT ♦ K843 ♣ AT3</p> <p>♠ A85 ♥ 8753 ♦ AT ♣ 9764</p> <p>6 14 12 8</p> <p>N S N 5 5 ♥ 2 2 ♦ 7 7 ♣ 2 2 3 3</p> <p>Opt res: EW 4S;-420</p> <p>E W N 7 8 ♥ 10 10 ♦ 6 6 ♣ 10 10 9 10</p>
<p>13 N/All</p> <p>♠ AK76 ♥ QT983 ♦ T5 ♣ 82</p> <p>♠ 4 ♥ AJ54 ♦ A87642 ♣ J3</p> <p>♠ QT982 ♥ - ♦ J93 ♣ A9654</p> <p>♠ J53 ♥ K762 ♦ KQ ♣ KQT7</p> <p>9 10 7 14</p> <p>N S N 6 6 ♥ 7 7 ♦ 9 9 ♣ 4 4 6 6</p> <p>Opt res: NS 2H;140</p> <p>E W N 6 6 ♥ 6 6 ♦ 4 4 ♣ 8 8 6 6</p>	<p>14 E/-</p> <p>♠ T64 ♥ 874 ♦ K8652 ♣ T9</p> <p>♠ Q752 ♥ T96 ♦ AQJ9 ♣ K4</p> <p>♠ AK3 ♥ Q2 ♦ T74 ♣ AQJ63</p> <p>♠ J98 ♥ AKJ53 ♦ 3 ♣ 8752</p> <p>3 12 16 9</p> <p>N S N 3 3 ♥ 1 1 ♦ 5 5 ♣ 3 3 2 2</p> <p>Opt res: EW 4S;-450</p> <p>E W N 8 8 ♥ 11 11 ♦ 8 8 ♣ 10 10 10 10</p>	<p>15 S/NS</p> <p>♠ T875 ♥ K7 ♦ K743 ♣ 765</p> <p>♠ AQJ64 ♥ AQ6 ♦ 86 ♣ 843</p> <p>♠ K32 ♥ J85 ♦ QJ9 ♣ AKQT</p> <p>♠ 9 ♥ T9432 ♦ AT52 ♣ J92</p> <p>6 13 16 5</p> <p>N S N 3 3 ♥ 2 2 ♦ 5 5 ♣ 6 5 2 2</p> <p>Opt res: EW 4S;-450</p> <p>E W N 10 10 ♥ 11 11 ♦ 8 8 ♣ 6 7 11 11</p>

<p>16 W/EW</p> <p>♠ 62 ♥ K86 ♦ A965 ♣ A743</p> <p>♠ 98 ♥ QT954 ♦ KQ7 ♣ K98</p> <p>♠ KJ ♥ AJ2 ♦ JT82 ♣ QJT2</p> <p>♠ AQT7543 ♥ 73 ♦ 43 ♣ 65</p> <p>11 10 13 6</p> <p>Opt res: EW 4HX;200</p> <p>N S N 9 9 ♥ 9 9 ♦ 4 4 ♣ 5 5 5 5</p> <p>E W N 4 4 ♥ 4 4 ♦ 9 9 ♣ 8 8 8 8</p>	<p>17 N/-</p> <p>♠ 9862 ♥ K98 ♦ K75 ♣ J85</p> <p>♠ J4 ♥ J763 ♦ AQJT3 ♣ 96</p> <p>♠ AK73 ♥ AT4 ♦ 962 ♣ AKT</p> <p>♠ QT5 ♥ Q52 ♦ 84 ♣ Q7432</p> <p>7 9 18 6</p> <p>Opt res: E 3N;-430</p> <p>N S N 3 3 ♥ 3 4 ♦ 3 3 ♣ 3 3 5 5</p> <p>E W N 10 9 ♥ 9 9 ♦ 10 10 ♣ 10 10 7 7</p>	<p>18 E/NS</p> <p>♠ AT42 ♥ J82 ♦ A3 ♣ T974</p> <p>♠ Q83 ♥ AQ4 ♦ T764 ♣ 853</p> <p>♠ 965 ♥ 65 ♦ Q982 ♣ AQJ6</p> <p>♠ KJ7 ♥ KT973 ♦ KJ5 ♣ K2</p> <p>9 8 9 14</p> <p>Opt res: NS 4H;620</p> <p>N S N 8 8 ♥ 9 9 ♦ 10 10 ♣ 7 7 8 8</p> <p>E W N 5 5 ♥ 4 4 ♦ 3 3 ♣ 6 6 5 5</p>
<p>19 S/EW</p> <p>♠ KT6 ♥ T6 ♦ A652 ♣ J542</p> <p>♠ Q542 ♥ 843 ♦ J743 ♣ A9</p> <p>♠ 98 ♥ AQJ72 ♦ T9 ♣ 8763</p> <p>♠ AJ73 ♥ K95 ♦ KQ8 ♣ KQT</p> <p>8 7 7 18</p> <p>Opt res: NS 4S;420</p> <p>N S N 8 8 ♥ 10 10 ♦ 8 8 ♣ 10 10 10 10</p> <p>E W N 2 2 ♥ 2 2 ♦ 5 5 ♣ 3 3 2 2</p>	<p>20 W/All</p> <p>♠ Q953 ♥ 87654 ♦ K7 ♣ A3</p> <p>♠ T2 ♥ QJ92 ♦ T52 ♣ KJ82</p> <p>♠ AKJ64 ♥ T ♦ 93 ♣ QT754</p> <p>♠ 87 ♥ AK3 ♦ AQJ864 ♣ 96</p> <p>9 7 10 14</p> <p>Opt res: EW 4CX;200</p> <p>N S N 9 9 ♥ 6 5 ♦ 9 9 ♣ 9 9 4 4</p> <p>E W N 4 4 ♥ 7 7 ♦ 4 4 ♣ 4 4 9 9</p>	<p>21 N/NS</p> <p>♠ K732 ♥ 942 ♦ A94 ♣ K82</p> <p>♠ 8 ♥ QT65 ♦ QJ53 ♣ 9543</p> <p>♠ J94 ♥ KJ83 ♦ KT62 ♣ J6</p> <p>♠ AQT65 ♥ A7 ♦ 87 ♣ AQT7</p> <p>10 5 9 16</p> <p>Opt res: NS 3N;660</p> <p>N S N 11 11 ♥ 11 11 ♦ 6 6 ♣ 6 6 11 11</p> <p>E W N 2 2 ♥ 2 2 ♦ 6 6 ♣ 6 6 2 2</p>
<p>22 E/EW</p> <p>♠ AJ9 ♥ A52 ♦ 6 ♣ QJT532</p> <p>♠ K865 ♥ 986 ♦ AQT84 ♣ 8</p> <p>♠ 72 ♥ QT ♦ 975 ♣ AK9764</p> <p>♠ QT43 ♥ KJ743 ♦ KJ32 ♣ -</p> <p>12 9 9 10</p> <p>Opt res: S 4S/NS 4H;420</p> <p>N S N 6 9 ♥ 9 10 ♦ 10 10 ♣ 6 6 7 7</p> <p>E W N 4 4 ♥ 3 3 ♦ 3 3 ♣ 6 6 5 5</p>	<p>23 S/All</p> <p>♠ A42 ♥ AK92 ♦ AJ ♣ T943</p> <p>♠ JT9 ♥ Q8 ♦ K54 ♣ AK865</p> <p>♠ 83 ♥ 543 ♦ QT987 ♣ QJ7</p> <p>♠ KQ765 ♥ JT76 ♦ 632 ♣ 2</p> <p>16 13 5 6</p> <p>Opt res: NS 4H;650</p> <p>N S N 8 8 ♥ 10 10 ♦ 11 11 ♣ 5 5 6 6</p> <p>E W N 3 3 ♥ 2 2 ♦ 1 1 ♣ 6 6 7 7</p>	<p>24 W/-</p> <p>♠ 9874 ♥ T542 ♦ KT4 ♣ AJ</p> <p>♠ QT ♥ K3 ♦ AQ3 ♣ QT7654</p> <p>♠ AKJ2 ♥ AJ97 ♦ 762 ♣ 82</p> <p>♠ 653 ♥ Q86 ♦ J985 ♣ K93</p> <p>8 13 13 6</p> <p>Opt res: W 3N;-400</p> <p>N S N 4 4 ♥ 4 4 ♦ 4 4 ♣ 5 5 3 3</p> <p>E W N 8 9 ♥ 9 9 ♦ 8 9 ♣ 8 8 10 10</p>
<p>25 N/EW</p> <p>♠ AK9 ♥ K96 ♦ AK8 ♣ KJ96</p> <p>♠ QJ42 ♥ JT5 ♦ Q63 ♣ Q87</p> <p>♠ T53 ♥ A74 ♦ T754 ♣ A52</p> <p>♠ 876 ♥ Q832 ♦ J92 ♣ T43</p> <p>21 8 8 3</p> <p>Opt res: NS 1H;140</p> <p>N S N 8 8 ♥ 8 8 ♦ 9 9 ♣ 8 8 9 9</p> <p>E W N 4 5 ♥ 5 5 ♦ 4 4 ♣ 5 5 4 4</p>	<p>26 E/All</p> <p>♠ QT9 ♥ 73 ♦ KQT ♣ AT943</p> <p>♠ J732 ♥ KJT2 ♦ A8 ♣ 652</p> <p>♠ A86 ♥ Q9864 ♦ 9653 ♣ 7</p> <p>♠ K54 ♥ A5 ♦ J742 ♣ KQJ8</p> <p>11 9 6 14</p> <p>Opt res: NS 3C;130</p> <p>N S N 7 7 ♥ 7 7 ♦ 5 5 ♣ 8 8 10 10</p> <p>E W N 4 4 ♥ 6 6 ♦ 8 8 ♣ 4 4 2 2</p>	<p>27 S/-</p> <p>♠ KQ5 ♥ KQJ8 ♦ 93 ♣ KJ98</p> <p>♠ 98 ♥ 753 ♦ 876 ♣ AT743</p> <p>♠ J72 ♥ AT94 ♦ QT42 ♣ 52</p> <p>♠ AT643 ♥ 62 ♦ AKJ5 ♣ Q6</p> <p>15 4 7 14</p> <p>Opt res: NS 3N;460</p> <p>N S N 11 11 ♥ 11 11 ♦ 10 10 ♣ 10 10 10 10</p> <p>E W N 2 2 ♥ 2 2 ♦ 3 3 ♣ 3 3 3 3</p>
<p>28 W/NS</p> <p>♠ K8 ♥ 75 ♦ KQ6532 ♣ JT8</p> <p>♠ JT92 ♥ K6 ♦ A9 ♣ AQ953</p> <p>♠ AQ654 ♥ AQT43 ♦ T ♣ K7</p> <p>♠ 73 ♥ J982 ♦ J874 ♣ 642</p> <p>9 14 15 2</p> <p>Opt res: EW 7N;-1520</p> <p>N S N - - ♥ - - ♦ 1 1 ♣ 5 5 - -</p> <p>E W N 13 13 ♥ 13 13 ♦ 12 12 ♣ 8 8 13 13</p>		