

1

♠ 1085
♥ K
♦ J9854
♣ J1074

♠ Q9
♥ A982
♦ A732
♣ K86

♠ K763
♥ Q1073
♦ KQ
♣ A53

♠ AJ42
♥ J654
♦ 106
♣ Q92

NS	EW	Contract	N-S	E-W	MP
4	21	4H W 4	4	420	8
8	14	4H W 4	4	420	8
23	3	4H W 4	4	420	8
11	15	4H W 4	4	420	8
17	2	4H W 4	4	420	8
5	13	4H W 4	4	420	8
7	19	4H E 4	4	420	8
22	1	4H W 5	5	450	2
20	10	4H W 5	5	450	2
18	6	4H W 5	5	450	2
24	9	4H W 5	5	450	2
12	16	4H W 5	5	450	2

2

♠ J94
♥ AQ4
♦ J2
♣ AQJ62

♠ 10
♥ KJ8
♦ AQ854
♣ K873

♠ AQ83
♥ 752
♦ 10963
♣ 109

♠ K7652
♥ 10963
♦ K7
♣ 54

NS	EW	Contract	N-S	E-W	MP
8	14	2C N-1	1	100	11
24	9	2D E 3	3	110	9.5
11	15	2D E 3	3	110	9.5
17	2	4D E 4	4	130	5
20	10	3D E 4	4	130	5
22	1	2D E 4	4	130	5
18	6	2D E 4	4	130	5
4	21	2D E 4	4	130	5
23	3	2D E 4	4	130	5
5	13	2D E 4	4	130	5
7	19	2C N-2	2	200	1
12	16	3C N-3	3	300	0

3

♠ 1065
♥ Q87542
♦ 63
♣ Q4

♠ KQJ93
♥ K63
♦ AK72
♣ 5

♠ A842
♥ AJ109
♦ QJ8
♣ A2

♠ 7
♥
♦ 10954
♣ KJ1098763

NS	EW	Contract	N-S	E-W	MP
22	1	5S E 6	6	680	9.5
17	2	5S E 6	6	680	9.5
20	10	4S E 6	6	680	9.5
24	9	4S E 6	6	680	9.5
12	16	4S E 7	7	710	6
23	3	4S E 7	7	710	6
5	13	4S E 7	7	710	6
18	6	6S W 6	6	1430	3
4	21	6S E 6	6	1430	3
11	15	6S E 6	6	1430	3
8	14	6S E 7	7	1460	0.5
7	19	6S E 7	7	1460	0.5

4

♠ Q9874
♥ Q654
♦
♣ A962

♠ A62
♥ KJ2
♦ J108
♣ 10875

♠ 3
♥ A107
♦ AK9732
♣ KQ4

♠ KJ105
♥ 983
♦ Q654
♣ J3

NS	EW	Contract	N-S	E-W	MP
20	11	3S S-3	3	300	11
16	3	3NT E 3	3	600	8.5
21	10	3NT E 3	3	600	8.5
1	15	3NT E 3	3	600	8.5
6	24	3NT E 3	3	600	8.5
17	12	3NT E 4	4	630	4.5
13	8	3NT E 4	4	630	4.5
23	9	3NT E 4	4	630	4.5
7	14	3NT E 4	4	630	4.5
19	5	3NT E 5	5	660	1.5
4	18	3NT E 5	5	660	1.5
22	2	3NT E 6	6	690	0

5

♠ AK864
♥ Q3
♦ Q8
♣ 10732

♠ Q1093
♥ J94
♦ J754
♣ Q5

♠ 2
♥ K1062
♦ A109632
♣ A4

♠ J75
♥ A875
♦ K
♣ KJ986

NS	EW	Contract	N-S	E-W	MP
21	10	3S N 4	4	170	10
17	12	3S N 4	4	170	10
1	15	2S N 4	4	170	10
7	14	3D W-1	50		8
22	2	4S N-1		100	5
19	5	4S N-1		100	5
6	24	4S N-1		100	5
4	18	4S N-1		100	5
20	11	4S N-1		100	5
23	9	4D W 4	4	130	2
16	3	5S N-2	2	200	0.5
13	8	4S N-2	2	200	0.5

6

♠ J52
♥ 10752
♦ J9
♣ J532

♠ K1093
♥ Q986
♦ KQ84
♣ 6

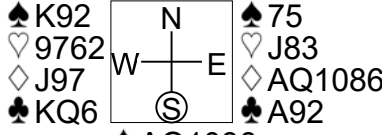
♠ 86
♥ AK43
♦ A106
♣ K987

♠ AQ74
♥ J
♦ 7532
♣ AQ104

NS	EW	Contract	N-S	E-W	MP
16	3	4H W-1	100		10.5
20	11	4H W-1	100		10.5
19	5	1D S 1	70		8.5
4	18	1D S 1	70		8.5
21	10	2C S-1		50	7
1	15	1D S-2		100	5.5
13	8	1D S-2		100	5.5
7	14	1H W 2		110	4
23	9	1H W 3		140	3
6	24	2NT W 3		150	1.5
17	12	1NT N-3		150	1.5
22	2	1D S-4		200	0

7

♠ J43
♥ Q1054
♦ 532
♣ 753

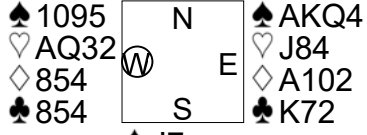


♠ AQ1086
♥ AK
♦ K4
♣ J1084

NS	EW	Contract	N-S	E-W	MP
22	3	3S	S 3	140	10
16	5	3S	S 3	140	10
19	8	1S	S 3	140	10
14	6	1NT	S 2	120	7.5
11	17	1NT	S 2	120	7.5
18	7	1S	S 2	110	6
15	9	3D	E-1	100	4
10	13	3D	E-1	100	4
4	23	3D	E-1	100	4
12	21	2D	E 2	90	1.5
1	24	2D	E 2	90	1.5
2	20	3S	S-1	100	0

8

♠ 8632
♥ K1097
♦ K3
♣ AQ3

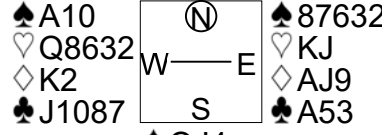


♠ J7
♥ 65
♦ QJ976
♣ J1096

NS	EW	Contract	N-S	E-W	MP
19	8	2H	W-1	50	11
14	6	1NT	E 1	90	9.5
16	5	1NT	E 1	90	9.5
15	9	1NT	E 2	120	4.5
10	13	1NT	E 2	120	4.5
22	3	1NT	E 2	120	4.5
18	7	1NT	E 2	120	4.5
2	20	1NT	E 2	120	4.5
12	21	1NT	E 2	120	4.5
1	24	1NT	E 2	120	4.5
11	17	1NT	E 2	120	4.5
4	23	1NT	E 3	150	0

9

♠ K95
♥ 1094
♦ 7653
♣ K64

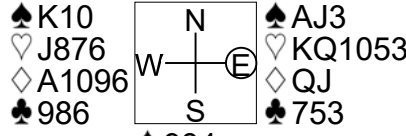


♠ QJ4
♥ A75
♦ Q1084
♣ Q92

NS	EW	Contract	N-S	E-W	MP
18	7	2NT	W-2	200	11
22	3	4S	E-1	100	10
2	20	3C	E 3	110	8.5
12	21	2S	E 2	110	8.5
11	17	1NT	W 2	120	7
15	9	2S	E 3	140	4.5
14	6	2S	E 3	140	4.5
4	23	2S	E 3	140	4.5
19	8	2H	W 3	140	4.5
1	24	3C	E 5	150	2
16	5	2NT	W 4	180	0.5
10	13	1NT	W 4	180	0.5

10

♠ Q7652
♥ 9
♦ K853
♣ QJ4

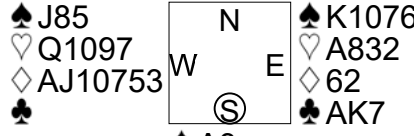


♠ 984
♥ A42
♦ 742
♣ AK102

NS	EW	Contract	N-S	E-W	MP
22	4	3H	E-1	100	10
14	10	3H	E-1	100	10
3	17	3H	E-1	100	10
20	5	3S	N-1	100	7
8	16	3S	N-1	100	7
24	2	3S	N-1	100	7
23	6	2H	E 2	110	3
9	21	2H	E 2	110	3
19	12	2H	E 2	110	3
15	7	2H	E 2	110	3
1	18	2H	E 2	110	3
13	11	3H	E 3	140	0

11

♠ Q942
♥ K64
♦ Q
♣ QJ964

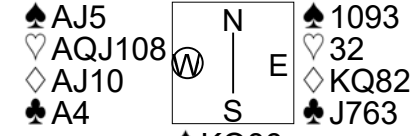


♠ A3
♥ J5
♦ K984
♣ 108532

NS	EW	Contract	N-S	E-W	MP
19	12	3NT	E-3	150	10.5
1	18	3NT	E-3	150	10.5
3	17	4H	E-1	50	9
20	5	2H	W 2	110	8
13	11	3H	W 3	140	5.5
22	4	2H	W 3	140	5.5
14	10	2H	W 3	140	5.5
9	21	2H	W 3	140	5.5
23	6	2H	W 4	170	2
8	16	2H	W 4	170	2
24	2	2H	W 4	170	2
15	7	2H	W 5	200	0

12

♠ 742
♥ 965
♦ 753
♣ Q1085

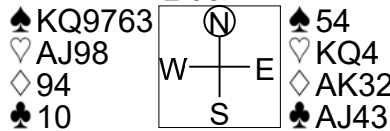


♠ KQ86
♥ K74
♦ 964
♣ K92

NS	EW	Contract	N-S	E-W	MP
23	6	3NT	W 4	430	9
14	10	3NT	W 4	430	9
19	12	3NT	W 4	430	9
15	7	3NT	W 4	430	9
1	18	3NT	W 4	430	9
3	17	3NT	W 5	460	6
13	11	3NT	W 6	490	2.5
20	5	3NT	W 6	490	2.5
22	4	3NT	W 6	490	2.5
9	21	3NT	W 6	490	2.5
24	2	3NT	W 6	490	2.5
8	16	3NT	E 6	490	2.5

13

♠ J8
♥ 652
♦ J108765
♣ 65

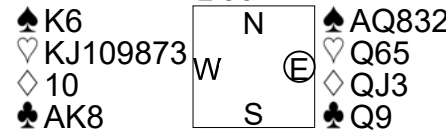


♠ A102
♥ 1073
♦ Q
♣ KQ9872

NS	EW	Contract	N-S	E-W	MP
7	23	4S W 6		680	5.5
6	19	4S W 6		680	5.5
14	2	4S E 6		680	5.5
16	11	4S E 6		680	5.5
17	1	4S E 6		680	5.5
10	15	4S E 6		680	5.5
22	5	4S E 6		680	5.5
13	12	4S E 6		680	5.5
3	21	4S E 6		680	5.5
8	20	4H W 6		680	5.5
18	9	4H W 6		680	5.5
24	4	4H W 6		680	5.5

14

♠ 104
♥ A4
♦ K98764
♣ J62

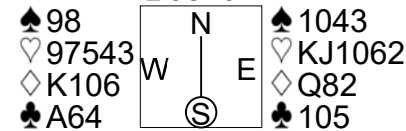


♠ J975
♥ 2
♦ A52
♣ 107543

NS	EW	Contract	N-S	E-W	MP
10	15	6H W-1	50		11
17	1	5H W 5		450	7.5
8	20	5H W 5		450	7.5
18	9	5H W 5		450	7.5
7	23	4H W 5		450	7.5
6	19	4H W 5		450	7.5
13	12	4H W 5		450	7.5
24	4	5H W 6		480	2
3	21	5H W 6		480	2
14	2	4H W 6		480	2
16	11	4H W 6		480	2
22	5	4H W 6		480	2

15

♠ KQJ65
♥ 8
♦ A94
♣ J873

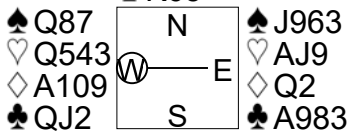


♠ A72
♥ AQ
♦ J753
♣ KQ92

NS	EW	Contract	N-S	E-W	MP
6	19	5Hx W-4	800		11
14	2	4S S 5	650		7
7	23	4S S 5	650		7
8	20	4S S 5	650		7
18	9	4S S 5	650		7
24	4	4S S 5	650		7
13	12	4S S 5	650		7
3	21	4S S 5	650		7
16	11	4S S 4	620		3
10	15	5C S 5	600		1.5
22	5	5C N 5	600		1.5
17	1	6S S-1	100		0

16

♠ A1052
♥ K7
♦ K754
♣ K65

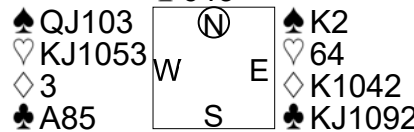


♠ K4
♥ 10862
♦ J863
♣ 1074

NS	EW	Contract	N-S	E-W	MP
14	1	1D N 1	70		11
21	5	2D N-1		50	9.5
19	4	1NT N-1		50	9.5
15	12	1S E 1		80	8
11	18	1NT W 1		90	7
17	9	2H W 2		110	5
7	13	2H W 2		110	5
10	16	2H W 2		110	5
20	3	2NT W 2		120	3
23	2	2H W 3		140	1
22	6	2H W 3		140	1
8	24	2H W 3		140	1

17

♠ 9874
♥ A2
♦ AJ95
♣ 643

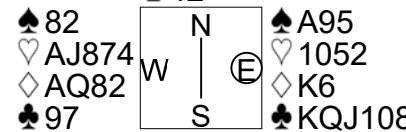


♠ A65
♥ Q987
♦ Q876
♣ Q7

NS	EW	Contract	N-S	E-W	MP
7	13	1NT E 1		90	10.5
15	12	1NT E 1		90	10.5
11	18	2NT E 2		120	8.5
21	5	1NT E 2		120	8.5
19	4	3C W 4		130	6.5
20	3	3C W 4		130	6.5
10	16	2H W 3		140	4
22	6	2H W 3		140	4
14	1	2H W 3		140	4
23	2	3D S-3		150	1
17	9	2NT E 3		150	1
8	24	1NT E 3		150	1

18

♠ Q7643
♥ K6
♦ 9754
♣ 42



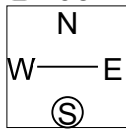
♠ KJ10
♥ Q93
♦ J103
♣ A653

NS	EW	Contract	N-S	E-W	MP
11	18	4H W-1	50		10
14	1	4H W-1	50		10
22	6	3H W-1	50		10
23	2	2H W 2		110	8
20	3	2H W 3		140	6
7	13	2H W 3		140	6
8	24	2H W 3		140	6
21	5	2H W 4		170	4
19	4	4H W 4		420	2
10	16	4H W 4		420	2
15	12	4H W 4		420	2
17	9	3NT E 4		430	0

19

♠ 10652
♥ 3
♦ A85
♣ A9872

♠ K93
♥ 97
♦ K743
♣ QJ104



♠ AJ8
♥ AKQJ102
♦ 102
♣ 53

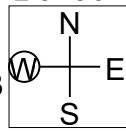
♠ Q74
♥ 8654
♦ QJ96
♣ K6

NS	EW	Contract	N-S	E-W	MP
13	1	4H E-3	300		11
17	10	4H E-2	200		9.5
19	3	4H E-2	200		9.5
12	18	4H E-1	100		5.5
9	14	4H E-1	100		5.5
21	11	4H E-1	100		5.5
4	16	4H E-1	100		5.5
2	15	4H E-1	100		5.5
22	7	4H E-1	100		5.5
24	5	3H E 4		170	1.5
6	20	2H E 4		170	1.5
23	8	3NT W 5		660	0

20

♠ A8
♥ 9742
♦ 10875
♣ J106

♠ 762
♥ 1063
♦ K963
♣ K82



♠ Q10943
♥ AQ85
♦ QJ
♣ 94

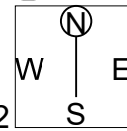
♠ KJ5
♥ KJ
♦ A42
♣ AQ753

NS	EW	Contract	N-S	E-W	MP
17	10	3NT S 3	600		10.5
22	7	3NT S 3	600		10.5
9	14	3S E-2	200		9
13	1	3C S 4	130		7.5
2	15	3C S 4	130		7.5
23	8	1NT S 2	120		6
24	5	3C S 3	110		4
21	11	3C S 3	110		4
4	16	3C S 3	110		4
6	20	2S E-1	100		2
19	3	3H N-2		200	1
12	18	3NT S-4		400	0

21

♠ 53
♥ J98742
♦ AKQJ5
♣

♠ K
♥ A
♦ 10432
♣ AK107632



♠ AQJ962
♥ Q1065
♦ 6
♣ J5

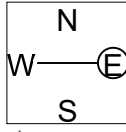
♠ 10874
♥ K3
♦ 987
♣ Q984

NS	EW	Contract	N-S	E-W	MP
19	3	3NT W-1	50		10.5
9	14	3C W-1	50		10.5
13	1	3D N-1		100	9
6	20	3C W 4		130	8
24	5	3C W 5		150	7
12	18	3S E 5		200	5
2	15	3D N-2		200	5
22	7	3D N-2		200	5
23	8	5C W 5		400	3
17	10	5Cx E 5		550	2
21	11	4Hx N-3		800	1
4	16	5Dx N-4		1100	0

22

♠ 72
♥ KQ8
♦ Q6
♣ A107642

♠ AQ95
♥ AJ106
♦ 10975
♣ 5



♠ KJ643
♥ 9752
♦ 8
♣ J93

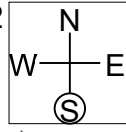
♠ 108
♥ 43
♦ AKJ432
♣ KQ8

NS	EW	Contract	N-S	E-W	MP
20	4	3D S 6	170		10.5
14	12	3C N 6	170		10.5
9	13	2NT N 3	150		9
15	6	3C N 4	130		8
21	7	5C N-1		50	4.5
11	19	5C N-1		50	4.5
5	17	3NT N-1		50	4.5
1	23	3NT N-1		50	4.5
18	10	3NT N-1		50	4.5
2	16	3NT N-1		50	4.5
22	8	3NT S-2		100	0.5
24	3	3NT N-2		100	0.5

23

♠ K3
♥ AK3
♦ K743
♣ QJ93

♠ AQ10842
♥ J109
♦ J105
♣ 8



♠ 975
♥ 65
♦ Q962
♣ K1042

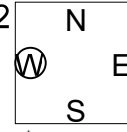
♠ J6
♥ Q8742
♦ A8
♣ A765

NS	EW	Contract	N-S	E-W	MP
5	17	5H S 5	650		7.5
21	7	4H S 5	650		7.5
24	3	4H S 5	650		7.5
9	13	4H S 5	650		7.5
22	8	4H S 5	650		7.5
15	6	4H N 5	650		7.5
1	23	4H N 5	650		7.5
2	16	4H N 5	650		7.5
14	12	3NT N 4	630		2.5
20	4	3NT N 4	630		2.5
11	19	4H N 4	620		0.5
18	10	4H N 4	620		0.5

24

♠ J73
♥ 3
♦ 97532
♣ J1097

♠ AKQ86542
♥ 4
♦ AQ53
♣ AQ53



♠ KQJ64
♥ AKQJ64
♦ A1086
♣ K862

♠ 109
♥ A1098752
♦ KQJ
♣ 4

NS	EW	Contract	N-S	E-W	MP
21	7	5S W 6		480	11
11	19	4S W 7		510	9.5
22	8	4S W 7		510	9.5
24	3	6NT E 6		990	6.5
14	12	6NT E 6		990	6.5
5	17	6NT E 6		990	6.5
9	13	6NT E 6		990	6.5
15	6	6S W 7		1010	2
1	23	6S W 7		1010	2
20	4	6S W 7		1010	2
18	10	6S W 7		1010	2
2	16	6S W 7		1010	2

25

♠ A93
♥ KJ95
♦ J1042
♣ K10

♠ J762
♥ 8642
♦ AQ98
♣ 7

♠ KQ4
♥ 7
♦ K3
♣ AQJ8652

♠ 1085
♥ AQ103
♦ 765
♣ 943

Diagram: A square with 'N' at top, 'S' at bottom, 'W' on left, 'E' on right. A circle with 'N' is above the square, and a circle with 'S' is below the square.

NS	EW	Contract	N-S	E-W	MP
5	23	2C E 4	4	130	10.5
22	9	2C E 4	4	130	10.5
15	4	3H N-3	3	150	7.5
17	8	3H N-3	3	150	7.5
14	11	3C E 5	5	150	7.5
16	1	3C E 5	5	150	7.5
7	24	3C E 6	6	170	2.5
13	2	3C E 6	6	170	2.5
12	20	2C E 6	6	170	2.5
3	18	2C E 6	6	170	2.5
21	6	2C E 6	6	170	2.5
10	19	2C E 6	6	170	2.5

26

♠ Q3
♥ 732
♦ 9532
♣ QJ109

♠ K109
♥ AKJ9
♦ AJ8
♣ AK2

♠ A8652
♥ 1064
♦ Q64
♣ 87

♠ J74
♥ Q85
♦ K107
♣ 6543

Diagram: A square with 'N' at top, 'S' at bottom, 'W' on left, 'E' on right. A circle with 'N' is above the square, and a circle with 'S' is below the square.

NS	EW	Contract	N-S	E-W	MP
10	19	4S W 5	5	650	10.5
3	18	4S E 5	5	650	10.5
15	4	3NT W 5	5	660	7.5
17	8	3NT W 5	5	660	7.5
7	24	3NT W 5	5	660	7.5
12	20	3NT W 5	5	660	7.5
13	2	4S W 6	6	680	2.5
5	23	4S W 6	6	680	2.5
14	11	4S W 6	6	680	2.5
16	1	4S W 6	6	680	2.5
21	6	4S W 6	6	680	2.5
22	9	4S W 6	6	680	2.5

27

♠ 10
♥ AQ109
♦ A92
♣ KQ743

♠ K54
♥ J752
♦ Q53
♣ J52

♠ Q7
♥ K83
♦ KJ10874
♣ 108

♠ AJ98632
♥ 64
♦ 6
♣ A96

Diagram: A square with 'N' at top, 'S' at bottom, 'W' on left, 'E' on right. A circle with 'N' is above the square, and a circle with 'S' is below the square.

NS	EW	Contract	N-S	E-W	MP
12	20	4S S 6	6	480	10.5
10	19	4S S 6	6	480	10.5
16	1	4S S 5	5	450	8.5
22	9	4S S 5	5	450	8.5
7	24	3S S 6	6	230	7
15	4	3S S 5	5	200	3.5
17	8	3S S 5	5	200	3.5
13	2	3S S 5	5	200	3.5
3	18	3S S 5	5	200	3.5
5	23	3S S 5	5	200	3.5
14	11	3S S 5	5	200	3.5
21	6	3S S 4	4	170	0

1

♠AQ765
♥K3
♦108
♣KQJ3

♠K82
♥972
♦Q75
♣A1075

♠J94
♥AQ1065
♦AK6
♣86

♠103
♥J84
♦J9432
♣942

NS	EW	Contract	N-S	E-W	MP
3	11	1S	N-1	50	11
13	18	4C	N-2	100	8.5
12	1	3S	N-2	100	8.5
17	23	1NT	N-2	100	8.5
14	21	1NT	N-2	100	8.5
19	16	3H	E 3	140	3
22	20	3H	E 3	140	3
9	7	3H	E 3	140	3
24	15	3H	E 3	140	3
5	2	3H	E 3	140	3
8	4	3H	E 3	140	3
10	6	3H	E 3	140	3

2

♠Q53
♥AQ974
♦10
♣K754

♠A1086
♥KJ10
♦AKQ9
♣J9

♠J7
♥865
♦76542
♣Q63

♠K942
♥32
♦J83
♣A1082

NS	EW	Contract	N-S	E-W	MP
9	7	2H	N 2	110	11
12	1	3NT	W-2	100	9
13	18	3D	W-2	100	9
24	15	3D	W-2	100	9
19	16	3D	W-1	50	5
22	20	3D	W-1	50	5
8	4	2NT	W-1	50	5
10	6	2D	W-1	50	5
3	11	1NT	W-1	50	5
5	2	3D	W 3	110	2
14	21	2NT	W 2	120	1
17	23	2H	N-2	200	0

3

♠973
♥AK5
♦J2
♣AJ984

♠KQJ852
♥Q8
♦Q
♣K753

♠6
♥10962
♦AK9754
♣102

♠A104
♥J743
♦10863
♣Q6

NS	EW	Contract	N-S	E-W	MP
14	21	3D	E-4	400	11
9	7	2S	W-2	200	9.5
3	11	2S	W-2	200	9.5
19	16	2S	W-1	100	7
24	15	2S	W-1	100	7
5	2	2S	W-1	100	7
13	18	3C	N-1	50	4.5
22	20	3C	N-1	50	4.5
8	4	1S	W 1	80	3
10	6	3C	N-2	100	2
12	1	2S	W 2	110	0.5
17	23	2S	W 2	110	0.5

4

♠KQJ1043
♥A542
♦K82
♣

♠98
♥63
♦QJ953
♣A732

♠76
♥J98
♦A
♣QJ109854

♠A52
♥KQ107
♦10764
♣K6

NS	EW	Contract	N-S	E-W	MP
22	21	5S	N 6	680	9
9	5	5H	N 6	680	9
11	4	4S	N 6	680	9
15	13	4S	N 6	680	9
23	18	4H	N 6	680	9
12	2	5S	N 5	650	4.5
1	8	5S	N 5	650	4.5
24	16	4S	N 5	650	4.5
10	7	4S	N 5	650	4.5
20	17	4S	N 4	620	1.5
6	3	4S	N 4	620	1.5
14	19	6S	N-1	100	0

5

♠J2
♥Q1053
♦AQ2
♣K1053

♠1083
♥J986
♦854
♣864

♠AK96
♥72
♦973
♣AQJ2

♠Q754
♥AK4
♦KJ106
♣97

NS	EW	Contract	N-S	E-W	MP
11	4	3NT	N 4	630	10.5
22	21	3NT	N 4	630	10.5
15	13	3NT	S 3	600	9
20	17	2Sx	E-2	300	8
12	2	3NT	S-1	100	3.5
14	19	3NT	S-1	100	3.5
23	18	3NT	N-1	100	3.5
1	8	3NT	N-1	100	3.5
24	16	3NT	N-1	100	3.5
6	3	3NT	N-1	100	3.5
9	5	3NT	N-1	100	3.5
10	7	3NT	N-1	100	3.5

6

♠KQ9
♥32
♦102
♣AQJ642

♠52
♥K85
♦K975
♣K1087

♠A8764
♥A109
♦QJ4
♣93

♠J103
♥QJ764
♦A863
♣5

NS	EW	Contract	N-S	E-W	MP
15	13	2S	E-1	100	11
11	4	2C	N-1	50	8
22	21	2C	N-1	50	8
24	16	2C	N-1	50	8
9	5	2C	N-1	50	8
10	7	2C	N-1	50	8
1	8	3C	N-2	100	3.5
6	3	3C	N-2	100	3.5
14	19	2H	S-2	100	3.5
23	18	2H	S-2	100	3.5
20	17	2S	E 2	110	1
12	2	2NT	N-3	150	0

7

♠ J654
♥ 10653
♦ Q9
♣ A64

♠ A108
♥ KQ7
♦ KJ843
♣ J10

♠ K92
♥ AJ9
♦ 10762
♣ KQ5

♠ Q73
♥ 842
♦ A5
♣ 98732

NS	EW	Contract	N-S	E-W	MP
16	14	3NT W-1	100		9.5
12	3	3NT E-1	100		9.5
13	22	3NT E-1	100		9.5
17	24	3NT E-1	100		9.5
15	20	3NT W 3		600	5.5
23	19	3NT W 3		600	5.5
2	9	3NT W 3		600	5.5
7	4	3NT W 3		600	5.5
8	10	3NT E 4		630	2
21	18	3NT E 4		630	2
1	6	3NT E 4		630	2
11	5	3NT E 5		660	0

8

♠ K93
♥ 3
♦ KJ642
♣ J872

♠ Q
♥ 10652
♦ 1075
♣ A10943

♠ J1064
♥ AKQ987
♦ 983
♣

♠ A8752
♥ J4
♦ AQ
♣ KQ65

NS	EW	Contract	N-S	E-W	MP
15	20	4S S 4	420		11
8	10	5Hx E-2	300		10
11	5	5Hx E-1	100		8.5
23	19	5Hx E-1	100		8.5
17	24	4S S-1		50	6
2	9	4S S-1		50	6
13	22	3S S-1		50	6
7	4	4Sx S-1		100	3
16	14	4S S-2		100	3
1	6	4S S-2		100	3
12	3	4Hx E 4		590	0.5
21	18	4Hx E 4		590	0.5

9

♠ J93
♥ AJ97652
♦ 3
♣ 54

♠ K542
♥ 104
♦ KQ4
♣ 10863

♠ AQ7
♥ Q
♦ J952
♣ AQJ97

♠ 1086
♥ K83
♦ A10876
♣ K2

NS	EW	Contract	N-S	E-W	MP
16	14	3NT E-3	300		11
2	9	5C E-2	200		9.5
15	20	3S W-2	200		9.5
11	5	3H N 4	170		8
12	3	4S W-1	100		5.5
23	19	4S W-1	100		5.5
7	4	4C E-1	100		5.5
8	10	3S W-1	100		5.5
13	22	4H N-1		50	3
21	18	3S W 3		140	1.5
1	6	3S W 3		140	1.5
17	24	5Hx N-2		300	0

10

♠ AK2
♥ J42
♦ K52
♣ Q932

♠ QJ43
♥ K1087
♦ 10763
♣ 6

♠ 1076
♥ Q95
♦ AQ98
♣ KJ8

♠ 985
♥ A63
♦ J4
♣ A10754

NS	EW	Contract	N-S	E-W	MP
11	6	1NT E-2	200		10
16	21	1NT E-2	200		10
23	20	1NT E-2	200		10
14	22	1NT E-1	100		7
18	24	1NT E-1	100		7
8	5	1NT E-1	100		7
2	7	2D E 2		90	3.5
9	10	2D E 2		90	3.5
12	4	2D E 2		90	3.5
3	1	2D E 2		90	3.5
13	19	2C S-1		100	1
17	15	4C S-3		300	0

11

♠ AQ
♥ 94
♦ AJ10765
♣ K65

♠ J83
♥ J10
♦ KQ3
♣ QJ983

♠ 54
♥ Q876532
♦ 42
♣ 102

♠ K109762
♥ AK
♦ 98
♣ A74

NS	EW	Contract	N-S	E-W	MP
3	1	6S S 6	980		11
9	10	4S S 7	510		10
11	6	3NT N 6	490		9
2	7	4S S 6	480		5.5
13	19	4S S 6	480		5.5
12	4	4S S 6	480		5.5
16	21	4S S 6	480		5.5
14	22	4S S 6	480		5.5
18	24	4S S 6	480		5.5
23	20	3NT S 5	460		1.5
8	5	3NT S 5	460		1.5
17	15	4S S 5	450		0

12

♠ Q94
♥ A854
♦ A102
♣ 632

♠ 1083
♥ 10
♦ KJ8765
♣ 1075

♠ AJ62
♥ 732
♦ Q9
♣ QJ98

♠ K75
♥ KQJ96
♦ 43
♣ AK4

NS	EW	Contract	N-S	E-W	MP
2	7	4H S 4	620		7
9	10	4H S 4	620		7
17	15	4H S 4	620		7
11	6	4H S 4	620		7
13	19	4H S 4	620		7
14	22	4H S 4	620		7
23	20	4H S 4	620		7
18	24	4H S 4	620		7
8	5	4H S 4	620		7
12	4	4H S-1		100	1
16	21	4H S-1		100	1
3	1	4H S-1		100	1

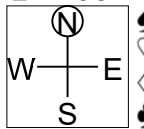
13

♠KJ
♥AK863
♦2
♣K10874

♠AQ54
♥J2
♦AK8
♣J963

♠732
♥975
♦Q7543
♣A5

♠10986
♥Q104
♦J1096
♣Q2



NS	EW	Contract	N-S	E-W	MP
15	22	3H N 4	170		10
21	23	3H N 4	170		10
19	24	3H N 4	170		10
9	6	3H N 3	140		5
7	11	3H N 3	140		5
12	5	3H N 3	140		5
17	13	3H N 3	140		5
4	2	3H N 3	140		5
1	10	2H N 3	140		5
18	16	2H N 3	140		5
14	20	3H N-1		100	1
3	8	4H N-2		200	0

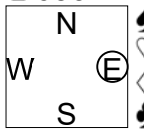
14

♠108
♥K8
♦AKJ63
♣6532

♠AK65
♥J7642
♦8
♣K84

♠J42
♥AQ95
♦Q10974
♣9

♠Q973
♥103
♦52
♣AQJ107



NS	EW	Contract	N-S	E-W	MP
9	6	3H W 4	170		7
7	11	3H W 4	170		7
14	20	3H W 4	170		7
21	23	3H W 4	170		7
4	2	3H W 4	170		7
3	8	2H W 4	170		7
1	10	2H W 4	170		7
15	22	2H W 4	170		7
18	16	2H E 4	170		7
17	13	4H W 4	420		2
12	5	4H W 5	450		0.5
19	24	4H W 5	450		0.5

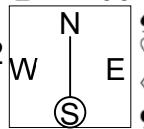
15

♠9753
♥K98
♦J
♣AK1097

♠Q108
♥J1072
♦K92
♣843

♠J42
♥Q53
♦8763
♣J62

♠AK6
♥A64
♦AQ1054
♣Q5



NS	EW	Contract	N-S	E-W	MP
21	23	6NT S 6	1440		11
9	6	3NT S 6	690		7.7
1	10	3NT S 6	690		7.7
18	16	3NT S 6	690		7.7
15	22	3NT S 6	690		7.7
19	24	3NT S 6	690		7.7
14	20	Av-			4.4
7	11	4NT S 5	660		2.2
3	8	3NT S 5	660		2.2
12	5	3NT S 5	660		2.2
17	13	3NT S 5	660		2.2
4	2	3NT S 5	660		2.2

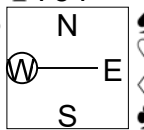
16

♠J8
♥84
♦AKQ865
♣754

♠AK1063
♥A5
♦72
♣10982

♠97
♥J10973
♦93
♣KQJ3

♠Q542
♥KQ62
♦J104
♣A6



NS	EW	Contract	N-S	E-W	MP
12	6	3NT S 4	430		11
19	17	4H E-2	200		10
1	7	3D S 3	110		8
4	9	3D N 3	110		8
5	3	2D N 3	110		8
2	10	3NT S-1		50	4.5
18	14	3NT S-1		50	4.5
8	11	3D N-1		50	4.5
13	23	2NT S-1		50	4.5
15	21	5D S-2		100	1
20	24	3NT S-2		100	1
22	16	3NT S-2		100	1

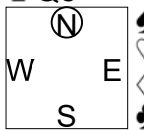
17

♠52
♥Q4
♦AQJ8764
♣Q5

♠A1096
♥AK10
♦2
♣J10763

♠KQ73
♥76
♦K1093
♣K94

♠J84
♥J98532
♦5
♣A82



NS	EW	Contract	N-S	E-W	MP
18	14	3S E 4	170		10.5
13	23	2S E 4	170		10.5
4	9	3S E 5	200		7.5
2	10	3S E 5	200		7.5
12	6	3S E 5	200		7.5
5	3	2S E 5	200		7.5
20	24	4S W 4	420		5
19	17	4S E 5	450		4
15	21	3NT E 5	460		2.5
22	16	3NT E 5	460		2.5
1	7	3Dx N-3		500	0.5
8	11	3Dx N-3		500	0.5

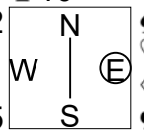
18

♠J65
♥KJ63
♦KJ1076
♣10

♠AQ102
♥Q
♦Q95
♣AQ985

♠943
♥A1074
♦2
♣J7632

♠K87
♥9852
♦A843
♣K4

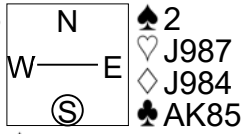


NS	EW	Contract	N-S	E-W	MP
5	3	4S W-1		50	11
15	21	1NT W 1		90	10
4	9	2NT W 2		120	9
1	7	2C W 4		130	8
22	16	4C W 5		150	5.5
13	23	4C W 5		150	5.5
2	10	2C W 5		150	5.5
18	14	2C W 5		150	5.5
19	17	4D N-2		200	3
20	24	5C W 5		400	1
8	11	5C W 5		400	1
12	6	5C W 5		400	1

19

♠9643
♥K1043
♦Q1032
♣7

♠AKJ1085
♥52
♦A5
♣J96



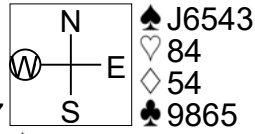
♠Q7
♥AQ6
♦K76
♣Q10432

NS	EW	Contract	N-S	E-W	MP
20	18	2S	W 2	110	11
23	14	2S	W 3	140	7
21	24	2S	W 3	140	7
5	1	2S	W 3	140	7
3	10	2S	W 3	140	7
11	9	2S	W 3	140	7
16	13	2S	W 3	140	7
22	17	2S	W 3	140	7
6	4	2S	W 4	170	2.5
12	7	2S	W 4	170	2.5
2	8	1NT	E 4	180	1
19	15	3C	S-4	200	0

20

♠AQ82
♥KQ32
♦J1082
♣3

♠K107
♥J76
♦KQ6
♣KJ107



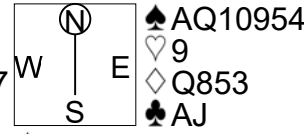
♠9
♥A1095
♦A973
♣AQ42

NS	EW	Contract	N-S	E-W	MP
21	24	4H	S 6	680	10
5	1	4H	S 6	680	10
19	15	4H	S 6	680	10
11	9	4H	S 5	650	7.5
3	10	4H	N 5	650	7.5
2	8	4H	S 4	620	5.5
6	4	4H	N 4	620	5.5
20	18	3NT	S 3	600	3.5
16	13	3NT	S 3	600	3.5
23	14	2H	S 6	230	2
12	7	2NT	S 4	180	1
22	17	2S	S-1	100	0

21

♠KJ76
♥QJ108
♦4
♣9543

♠3
♥K642
♦AKJ107
♣1087



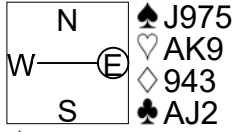
♠82
♥A753
♦962
♣KQ62

NS	EW	Contract	N-S	E-W	MP
23	14	6D	W-2	100	11
6	4	3D	E 4	130	10
12	7	3S	E 3	140	8.5
22	17	3S	E 3	140	8.5
19	15	3D	E 5	150	7
11	9	3D	E 6	170	6
5	1	5D	E 5	400	3
21	24	3NT	W 3	400	3
3	10	3NT	W 3	400	3
20	18	3NT	W 3	400	3
16	13	3NT	W 3	400	3
2	8	3NT	W 4	430	0

22

♠AQ1062
♥J3
♦AQ75
♣76

♠K8
♥Q1082
♦KJ10
♣Q843



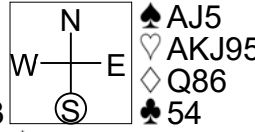
♠43
♥7654
♦862
♣K1095

NS	EW	Contract	N-S	E-W	MP
24	13	3C	E-2	200	11
11	1	2S	N-1	50	9
17	14	2S	N-1	50	9
22	18	2D	N-1	50	9
21	19	1NT	W 1	90	7
3	9	2D	N-2	100	6
20	16	2H	W 2	110	5
23	15	2NT	W 2	120	2.5
7	5	1NT	W 2	120	2.5
10	4	1NT	W 2	120	2.5
12	8	1NT	W 2	120	2.5
6	2	2S	N-3	150	0

23

♠Q1094
♥10864
♦1043
♣J7

♠876
♥7
♦J95
♣AK9863



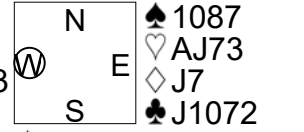
♠K32
♥Q32
♦AK72
♣Q102

NS	EW	Contract	N-S	E-W	MP
7	5	3NT	E-4	400	11
22	18	3NT	E-2	200	10
20	16	2H	E-1	100	9
11	1	3C	E 3	110	7.5
3	9	2C	W 3	110	7.5
24	13	2NT	E 2	120	6
6	2	3C	W 4	130	3.5
21	19	3C	W 4	130	3.5
12	8	3C	W 4	130	3.5
17	14	2C	W 4	130	3.5
23	15	2D	S-2	200	1
10	4	3NT	E 3	600	0

24

♠K65
♥KQ862
♦942
♣Q6

♠93
♥54
♦AQ10863
♣K98



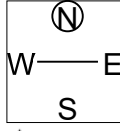
♠AQJ42
♥109
♦K5
♣A543

NS	EW	Contract	N-S	E-W	MP
22	18	4S	S 5	450	11
7	5	3S	S 3	140	8.5
6	2	3S	S 3	140	8.5
12	8	3S	S 3	140	8.5
11	1	2S	N 3	140	8.5
24	13	4S	S-1	50	4.5
3	9	4S	S-1	50	4.5
17	14	4S	S-1	50	4.5
10	4	3S	S-1	50	4.5
23	15	4S	S-2	100	1.5
20	16	4S	S-2	100	1.5
21	19	3D	W 3	110	0

25

♠ KJ1073
♥ J4
♦ J8632
♣ 10

♠ 986542
♥ K2
♦ 94
♣ K84



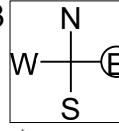
♠ Q
♥ A10875
♦ K5
♣ AJ973

NS	EW	Contract	N-S	E-W	MP
22	19	4S	W-4	400	11
2	11	2S	W-3	300	10
21	17	2S	W-2	200	7.5
10	5	2S	W-2	200	7.5
18	15	2S	W-2	200	7.5
12	9	2S	W-2	200	7.5
4	1	3H	S 3	140	5
16	23	2S	W-1	100	3
8	6	2S	W-1	100	3
7	3	2S	W-1	100	3
13	20	2Sx	N-1	100	1
24	14	2S	E 4	170	0

26

♠ 6
♥ A742
♦ A10653
♣ A92

♠ KQJ103
♥ J6
♦ 4
♣ KQJ53



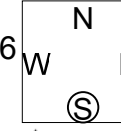
♠ A9752
♥ KQ9
♦ 98
♣ 764

NS	EW	Contract	N-S	E-W	MP
7	3	3S	W-3	300	10.5
21	17	2D	W-3	300	10.5
13	20	3S	W-2	200	8.5
2	11	3C	W-2	200	8.5
24	14	2S	W-1	100	6.5
4	1	2S	W-1	100	6.5
8	6	1NT	E 1	90	5
18	15	1NT	S-1	100	4
22	19	2S	W 2	110	3
10	5	2S	W 3	140	2
12	9	3H	N-2	200	0.5
16	23	2D	N-2	200	0.5

27

♠ A2
♥ J1097
♦ AJ6
♣ Q1072

♠ 863
♥ AK86
♦ 942
♣ K43



♠ 104
♥ 532
♦ Q1053
♣ AJ96

NS	EW	Contract	N-S	E-W	MP
24	14	3Hx	S 3	530	11
4	1	3S	E 3	140	8.5
10	5	3S	E 3	140	8.5
13	20	3S	E 3	140	8.5
12	9	3S	E 3	140	8.5
2	11	3S	W 4	170	3.5
8	6	3S	E 4	170	3.5
7	3	3S	E 4	170	3.5
22	19	2S	E 4	170	3.5
16	23	2S	E 4	170	3.5
18	15	2S	E 4	170	3.5
21	17	4S	E 4	420	0