

1

♠ 10
♥ 543
♦ Q2
♣ AKQ9732

♠ Q853
♥ Q
♦ AJ6543
♣ J8

♠ K76
♥ AK8762
♦ 9
♣ 1054

W N E S

♠ AJ942
♥ J109
♦ K1087
♣ 6

NS	EW	Contract	N-S	E-W	IMP
6	7	5H S-1		50	8
9	4	4H S-1		50	8
11	2	4C S-1		50	8
1	12	3NT N-1		50	8
8	5	3NT N-1		50	8
3	10	5D E 5		400	-40

2

♠ KQ764
♥ A8
♦ 9
♣ Q8763

♠ J983
♥ 10743
♦ 874
♣ A10

♠ 1052
♥ Q5
♦ AQ632
♣ J95

W N E S

♠ A
♥ KJ962
♦ KJ105
♣ K42

NS	EW	Contract	N-S	E-W	IMP
1	12	4H W-1		50	26
9	4	4H W-1		50	26
8	5	4S S-1		100	4
3	10	3S N-1		100	4
6	7	4S S-3		300	-23
11	2	4S N-4		400	-37

3

♠ J652
♥ Q1073
♦ K7
♣ 654

♠ AK104
♥ K8
♦ 984
♣ K1087

♠ 3
♥ A9542
♦ AJ10
♣ AJ32

W N E S

♠ Q987
♥ J6
♦ Q6532
♣ Q9

NS	EW	Contract	N-S	E-W	IMP
8	5	3H S 4		170	13
9	4	3H S 3		140	7
1	12	3S W-1		100	1
11	2	3S W-1		100	1
6	7	3S W-1		100	1
3	10	4H S-1		50	-23

4

♠ 106
♥ J1086
♦ K93
♣ K653

♠ 5
♥ A9754
♦ AJ874
♣ A10

♠ AKQ942
♥ K2
♦ 62
♣ J92

W N E S

♠ J873
♥ Q3
♦ Q105
♣ Q874

NS	EW	Contract	N-S	E-W	IMP
9	4	2S S 3		140	20
8	5	2S S 2		110	14
3	10	2S S 2		110	14
1	12	2S S-1		100	-16
11	2	2S S-1		100	-16
6	7	1NT N-1		100	-16

5

♠ AK92
♥ AQ94
♦ J1094
♣ A

♠ 10853
♥
♦ Q632
♣ J7632

♠ Q64
♥ J832
♦ K87
♣ Q108

W N E S

♠ J7
♥ K10765
♦ A5
♣ K954

NS	EW	Contract	N-S	E-W	IMP
1	12	4H S-1		100	6
8	5	4H S-1		100	6
9	4	4H S-1		100	6
3	10	3H S-1		100	6
11	2	4H S-2		200	-12
6	7	4H S-2		200	-12

6

♠ J109
♥ J3
♦ J732
♣ 10432

♠ Q42
♥ AQ10
♦ Q986
♣ J97

♠ A87
♥ 752
♦ K1054
♣ AQ5

W N E S

♠ K653
♥ K9864
♦ A
♣ K86

NS	EW	Contract	N-S	E-W	IMP
6	1	4H W-1		100	46
11	4	2D S-1		50	32
3	12	3H W 3		140	21
2	5	3NT E 3		600	-31
8	9	4H W 4		620	-34
10	7	3NT E 4		630	-34

7

♠ K73
♥ J5
♦ 10932
♣ Q1052

♠ 982
♥ AKQ1096
♦ 64
♣ 96

♠ AJ104
♥ 832
♦ KQ
♣ J743

W N E S

♠ Q65
♥ 74
♦ AJ875
♣ AK8

NS	EW	Contract	N-S	E-W	IMP
8	9	4H E-1		100	38
2	5	4H E-1		100	38
3	12	2H E 3		140	10
10	7	2H E 4		170	5
11	4	3NT W 3		600	-42
6	1	4H W 5		650	-49

8

♠ KJ532
♥ 108642
♦ K109
♣ K109

♠ J3
♥ A6
♦ KJ95
♣ A8732

♠ KQ864
♥ Q109
♦ Q73
♣ J4

W N E S

♠ A109752
♥ 874
♦ A
♣ Q65

NS	EW	Contract	N-S	E-W	IMP
8	9	4S W-1		50	14
3	12	4S W-1		50	14
10	7	4S W-1		50	14
2	5	4S W-1		50	14
11	4	2S W 2		110	-9
6	1	4S W 4		420	-47

9

♠ 985
♥ Q
♦ K9832
♣ 9752

♠ 1073
♥ K62
♦ QJ74
♣ A83

♠ AKQ4
♥ 10874
♦ A6
♣ Q106

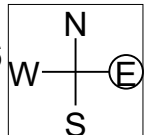
W N E S

♠ J62
♥ AJ953
♦ 105
♣ KJ4

NS	EW	Contract	N-S	E-W	IMP
11	4	1NT S-1		50	8
3	12	1NT S-1		50	8
8	9	1NT S-2		100	-4
10	7	1NT S-2		100	-4
6	1	1NT S-2		100	-4
2	5	1NT S-2		100	-4

10

♠876
♥852
♦J42
♣9542



♠AQ32
♥73
♦KQ1073
♣63

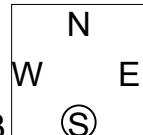
♠
♥AQJ106
♦A965
♣AQJ8

♠KJ10954
♥K94
♦8
♣K107

Table with 6 columns: NS, EW, Contract, N-S, E-W, IMP. Rows show various deals and scores for hand 10.

11

♠J1073
♥AQ53
♦QJ1097
♣



♠A9865
♥K7
♦A3
♣9842

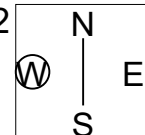
♠K42
♥1042
♦864
♣K1063

♠Q
♥J986
♦K52
♣AQJ75

Table with 6 columns: NS, EW, Contract, N-S, E-W, IMP. Rows show various deals and scores for hand 11.

12

♠97
♥K972
♦Q6432
♣63



♠A
♥J1084
♦J85
♣AK1084

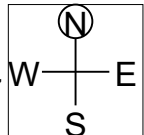
♠108642
♥AQ5
♦97
♣QJ2

♠KQJ53
♥63
♦AK10
♣975

Table with 6 columns: NS, EW, Contract, N-S, E-W, IMP. Rows show various deals and scores for hand 12.

13

♠7
♥KQJ743
♦863
♣AK5



♠A982
♥A9
♦Q542
♣1094

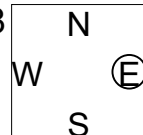
♠KQ4
♥862
♦KJ107
♣J82

♠J10653
♥105
♦A9
♣Q763

Table with 6 columns: NS, EW, Contract, N-S, E-W, IMP. Rows show various deals and scores for hand 13.

14

♠K4
♥Q102
♦K9653
♣K74



♠1065
♥986
♦Q104
♣J952

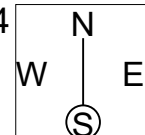
♠AQJ98
♥AK3
♦J82
♣63

♠732
♥J754
♦A7
♣AQ108

Table with 6 columns: NS, EW, Contract, N-S, E-W, IMP. Rows show various deals and scores for hand 14.

15

♠KJ3
♥Q876
♦A87
♣J98



♠1082
♥AK92
♦J95
♣A72

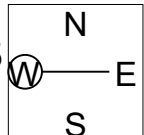
♠AQ964
♥4
♦K106
♣KQ54

♠75
♥J1053
♦Q432
♣1063

Table with 6 columns: NS, EW, Contract, N-S, E-W, IMP. Rows show various deals and scores for hand 15.

16

♠KQ2
♥AJ832
♦K1073
♣10



♠1043
♥K94
♦AQJ
♣J743

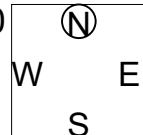
♠8765
♥Q1065
♦86
♣A96

♠AJ9
♥7
♦9542
♣KQ852

Table with 6 columns: NS, EW, Contract, N-S, E-W, IMP. Rows show various deals and scores for hand 16.

17

♠974
♥A42
♦K8542
♣KQ



♠832
♥KQ65
♦AJ6
♣1096

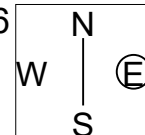
♠AKQJ10
♥J8
♦Q1093
♣72

♠65
♥10973
♦7
♣AJ8543

Table with 6 columns: NS, EW, Contract, N-S, E-W, IMP. Rows show various deals and scores for hand 17.

18

♠53
♥1043
♦Q10765
♣853



♠Q87
♥A986
♦432
♣KJ9

♠AKJ106
♥J2
♦AJ8
♣AQ6

♠942
♥KQ75
♦K9
♣10742

Table with 6 columns: NS, EW, Contract, N-S, E-W, IMP. Rows show various deals and scores for hand 18.

19

♠ 8732
♥ QJ5
♦ Q73
♣ J87

♠ AKQJ
♥ 9
♦ AJ10984
♣ 104

N
W — E
S (S)

♠ A108643
♥ K65
♦ Q953
♣ 109654
♥ K72
♦ 2
♣ AK62

NS	EW	Contract	N-S	E-W	IMP
11	8	2H E 6		230	46
6	9	5D W 5		600	-4
7	12	3NT W 4		630	-9
4	1	3NT W 4		630	-9
10	5	3NT E 4		630	-9
2	3	3NT E 5		660	-15

20

♠ 1053
♥ A7652
♦ Q5
♣ A85

♠ AKQJ2
♥ 103
♦ 972
♣ 1073

N
W — E
S (S)

♠ 74
♥ J9
♦ 8643
♣ QJ962

♠ 986
♥ KQ84
♦ AKJ10
♣ K4

NS	EW	Contract	N-S	E-W	IMP
10	5	4H S 4	620		10
6	9	4H S 4	620		10
2	3	4H S 4	620		10
11	8	4H S 4	620		10
4	1	4H S 4	620		10
7	12	2H N 4	170		-50

21

♠ A7
♥ A975
♦ 543
♣ K984

♠ 63
♥ J643
♦ J109872
♣ 5

N
W — E
S (S)

♠ KJ
♥ K108
♦ AQ6
♣ AQJ106

♠ Q1098542
♥ Q2
♦ K
♣ 732

NS	EW	Contract	N-S	E-W	IMP
1	8	5D W-2	100		51
7	2	2NT E 2		120	26
6	3	3NT E 3		400	-12
4	5	3NT E 3		400	-12
11	10	3NT E 6		490	-26
9	12	4Sx S-2		500	-27

22

♠ 643
♥ 1085
♦ J4
♣ 98653

♠ AK1082
♥ 942
♦ Q2
♣ AQ10

N
W — E
S (S)

♠ Q975
♥ 63
♦ AK85
♣ 742

♠ J
♥ AKQJ7
♦ 109763
♣ KJ

NS	EW	Contract	N-S	E-W	IMP
6	3	4S W 5		650	0
7	2	4S W 5		650	0
1	8	4S W 5		650	0
4	5	4S W 5		650	0
9	12	4S W 5		650	0
11	10	4S W 5		650	0

23

♠ AK854
♥ K42
♦ 876
♣ 62

♠ 63
♥ J98
♦ QJ10
♣ AK1073

N
W — E
S (S)

♠ J2
♥ A1076
♦ 9543
♣ QJ8

♠ Q1097
♥ Q53
♦ AK2
♣ 954

NS	EW	Contract	N-S	E-W	IMP
4	5	2S N 2	110		20
11	10	2S N 2	110		20
9	12	4S N-1		100	-10
6	3	3S N-1		100	-10
7	2	3S N-1		100	-10
1	8	3S N-1		100	-10

24

♠ K432
♥ Q97
♦ KQJ4
♣ Q3

♠ Q1086
♥ K62
♦ 832
♣ 852

N
W — E
S (S)

♠ J97
♥ J5
♦ A1065
♣ KJ74

♠ A5
♥ A10843
♦ 97
♣ A1096

NS	EW	Contract	N-S	E-W	IMP
6	3	4H S 4	420		0
7	2	4H S 4	420		0
1	8	4H S 4	420		0
4	5	4H S 4	420		0
9	12	4H S 4	420		0
11	10	4H S 4	420		0

25

♠ KJ75
♥ 7432
♦ J
♣ A943

♠ Q843
♥ AQ
♦ 1052
♣ Q762

N
W — E
S (S)

♠ A1092
♥ J986
♦ K874
♣ K

♠ 6
♥ K105
♦ AQ963
♣ J1085

NS	EW	Contract	N-S	E-W	IMP
4	5	Passout			17
11	10	3C S-1		50	9
9	12	3C S-2		100	-2
1	8	3S W 3		140	-8
6	3	2S W 3		140	-8
7	2	2S W 3		140	-8

1

♠ 964
♥ 742
♦ 642
♣ A874

♠ AQ85
♥ K10953
♦ AK10
♣ 2

♠ J1072
♥ A8
♦ J953
♣ K106

♠ K3
♥ QJ6
♦ Q87
♣ QJ953

(N) W E S

NS	EW	Contract	N-S	E-W	IMP
2	12	4S W 5		450	5
10	6	4S E 6		480	-1
5	9	4S E 6		480	-1
11	1	4S E 6		480	-1
8	4	4S E 6		480	-1
3	7	4S E 6		480	-1

2

♠ A653
♥ 85
♦
♣ AKQ8753

♠ KQJ2
♥ K1094
♦ KQJ93
♣

♠ 1074
♥ A76
♦ A108
♣ J1064

♠ 98
♥ QJ32
♦ 76542
♣ 92

(N) W E S

NS	EW	Contract	N-S	E-W	IMP
5	9	2Cx N 3	380		58
3	7	3D W 4		130	5
2	12	4C N-2		200	-4
8	4	3Cx N-1		200	-4
10	6	2S N-3		300	-20
11	1	4H W 4		420	-35

3

♠ 6
♥ 10876
♦ K10987
♣ A75

♠ AK98
♥ 32
♦ A63
♣ J1064

♠ QJ104
♥ AK954
♦ Q52
♣ 8

♠ 7532
♥ QJ
♦ J4
♣ KQ932

(N) W E S

NS	EW	Contract	N-S	E-W	IMP
2	12	4S W-1	100		48
8	4	4S W-1	100		48
10	6	4S W 4		620	-24
5	9	4S W 4		620	-24
11	1	4S W 4		620	-24
3	7	4S W 4		620	-24

4

♠ 103
♥ KJ
♦ J10863
♣ QJ109

♠ Q854
♥ 102
♦ K42
♣ A754

♠ K972
♥ A754
♦ AQ95
♣ K

♠ AJ6
♥ Q9863
♦ 7
♣ 8632

(N) W E S

NS	EW	Contract	N-S	E-W	IMP
5	9	4S W-1	100		36
8	4	4S W-1	100		36
3	7	4S W-1	100		36
11	1	4S W 4		620	-36
10	6	4S E 4		620	-36
2	12	4S E 4		620	-36

5

♠ Q3
♥ J8652
♦ 1073
♣ K96

♠ KJ6
♥ K109
♦ QJ964
♣ 104

♠ A754
♥ A
♦ K5
♣ AJ8532

♠ 10982
♥ Q743
♦ A82
♣ Q7

(N) W E S

NS	EW	Contract	N-S	E-W	IMP
10	6	3NT W-2	100		55
5	9	3NT W 4		430	-10
2	12	3NT W 4		430	-10
8	4	3NT W 4		430	-10
3	7	3NT W 4		430	-10
11	1	3NT W 5		460	-15

6

♠ K52
♥ QJ542
♦ Q854
♣ 4

♠ Q843
♥ 93
♦ AK6
♣ Q1092

♠ A76
♥ 106
♦ 93
♣ KJ8653

♠ J109
♥ AK87
♦ J1072
♣ A7

(N) W E S

NS	EW	Contract	N-S	E-W	IMP
11	3	4H N 4	420		12
8	6	4H N 4	420		12
2	10	4H N 4	420		12
4	12	4H N 4	420		12
5	7	3H N 4	170		-24
9	1	3H N 4	170		-24

7

♠ K108
♥ Q8763
♦ KJ8
♣ 97

♠ 74
♥ A10942
♦ 764
♣ K84

♠ AQ963
♥ KJ
♦ 1052
♣ A106

♠ J52
♥ 5
♦ AQ93
♣ QJ532

(N) W E S

NS	EW	Contract	N-S	E-W	IMP
9	1	2S E-3	300		41
8	6	2S E-1	100		15
4	12	1NT W 1		90	-12
5	7	2D S-1		100	-14
11	3	2S E 2		110	-15
2	10	2H E 2		110	-15

8

♠ K62
♥ 9765
♦ 9
♣ Q6543

♠ AJ753
♥ 3
♦ AKJ1074
♣ 7

♠ Q9
♥ AQ1082
♦ 853
♣ A108

♠ 1084
♥ KJ4
♦ Q62
♣ KJ92

(N) W E S

NS	EW	Contract	N-S	E-W	IMP
2	10	4S W-2	100		26
11	3	3NT E-2	100		26
8	6	6D W-1	50		17
5	7	3NT E-1	50		17
4	12	3NT E 3		400	-40
9	1	4S W 6		480	-46

9

♠ AJ5
♥ Q104
♦ KQ752
♣ 95

♠ Q9862
♥ J
♦ 863
♣ A742

♠ 1073
♥ A9853
♦ 4
♣ QJ86

♠ K4
♥ K762
♦ AJ109
♣ K103

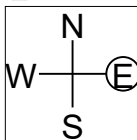
(N) W E S

NS	EW	Contract	N-S	E-W	IMP
9	1	3NT N 5	460		9
4	12	3NT N 4	430		3
11	3	3NT N 3	400		-3
8	6	3NT N 3	400		-3
5	7	3NT N 3	400		-3
2	10	3NT N 3	400		-3

10

♠ 1054
♥ KQ1096
♦ AQJ97
♣

♠ 87
♥ J82
♦ 1042
♣ J10643



♠ AK962
♥ 7
♦ K53
♣ KQ87

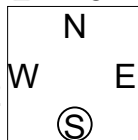
♠ QJ3
♥ A543
♦ 86
♣ A952

Table with 6 columns: NS, EW, Contract, N-S, E-W, IMP. Rows show various contract results for hand 10.

11

♠ 963
♥ 74
♦ AQ4
♣ AK542

♠ 7542
♥ 98
♦ 10952
♣ J63



♠ AK8
♥ 52
♦ K863
♣ Q1097

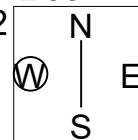
♠ QJ10
♥ AKQJ1063
♦ J7
♣ 8

Table with 6 columns: NS, EW, Contract, N-S, E-W, IMP. Rows show various contract results for hand 11.

12

♠ 65
♥ 9864
♦ KQ43
♣ J97

♠ QJ972
♥ 103
♦ J72
♣ A52



♠ K84
♥ AJ75
♦ 1098
♣ KQ3

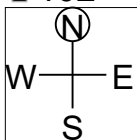
♠ A103
♥ KQ2
♦ A65
♣ 10864

Table with 6 columns: NS, EW, Contract, N-S, E-W, IMP. Rows show various contract results for hand 12.

13

♠ Q87
♥ AKJ
♦ Q10832
♣ 102

♠ AK6
♥ 92
♦ 765
♣ A8743



♠ 1043
♥ Q106543
♦ AK
♣ K6

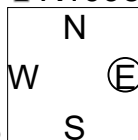
♠ J952
♥ 87
♦ J94
♣ QJ95

Table with 6 columns: NS, EW, Contract, N-S, E-W, IMP. Rows show various contract results for hand 13.

14

♠ 2
♥ A75
♦ Q1072
♣ K10982

♠ 753
♥ 9632
♦ 95
♣ A643



♠ AQJ1098
♥ KQ4
♦ A43
♣ 7

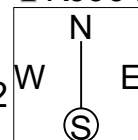
♠ K64
♥ J108
♦ KJ86
♣ QJ5

Table with 6 columns: NS, EW, Contract, N-S, E-W, IMP. Rows show various contract results for hand 14.

15

♠ A107
♥ J9
♦ J97
♣ KJ964

♠ 85
♥ Q76
♦ KQ8432
♣ 107



♠ Q92
♥ AK1052
♦ 1065
♣ A8

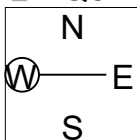
♠ KJ643
♥ 843
♦ A
♣ Q532

Table with 6 columns: NS, EW, Contract, N-S, E-W, IMP. Rows show various contract results for hand 15.

16

♠ K8
♥ K108
♦ K942
♣ KQ84

♠ A952
♥ J65
♦ Q63
♣ 753



♠ 10763
♥ AQ9742
♦ 7
♣ J2

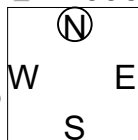
♠ QJ4
♥ 3
♦ AJ1085
♣ A1096

Table with 6 columns: NS, EW, Contract, N-S, E-W, IMP. Rows show various contract results for hand 16.

17

♠ AK108
♥ K63
♦ 43
♣ A1093

♠ 73
♥ AQ4
♦ AK1085
♣ 842



♠ QJ962
♥ 752
♦ Q6
♣ QJ5

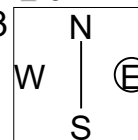
♠ 54
♥ J1098
♦ J972
♣ K76

Table with 6 columns: NS, EW, Contract, N-S, E-W, IMP. Rows show various contract results for hand 17.

18

♠ 94
♥ AJ632
♦ AQ642
♣ 6

♠ Q10853
♥ 98
♦ K8
♣ AJ93



♠ K2
♥ K105
♦ 953
♣ KQ1042

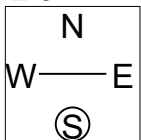
♠ AJ76
♥ Q74
♦ J107
♣ 875

Table with 6 columns: NS, EW, Contract, N-S, E-W, IMP. Rows show various contract results for hand 18.

19

♠KJ10983
♥Q6
♦A9
♣974

♠A7542
♥AK105
♦53
♣A2



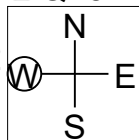
♠6
♥932
♦J106
♣KQ10653

NS	EW	Contract	N-S	E-W	IMP
8	12	4H W-1	100		51
4	10	4H W-1	100		51
6	2	4H W 4		620	-20
1	5	4H W 5		650	-26
9	3	4H W 5		650	-26
11	7	4H W 6		680	-30

20

♠J1072
♥KQ3
♦AJ2
♣Q75

♠65
♥J98642
♦K54
♣J3



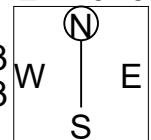
♠AQ83
♥
♦Q1087
♣AK864
♠K94
♥A1075
♦963
♣1092

NS	EW	Contract	N-S	E-W	IMP
1	5	1NT N 1	90		10
11	7	1NT N 1	90		10
4	10	1NT N 1	90		10
6	2	1NT N 1	90		10
8	12	1NT S-1		100	-20
9	3	2H W 2		110	-20

21

♠Q8654
♥A5
♦92
♣K1076

♠1072
♥J1093
♦J1083
♣J5



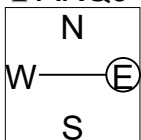
♠A3
♥64
♦A765
♣AQ942
♠KJ9
♥KQ872
♦KQ4
♣83

NS	EW	Contract	N-S	E-W	IMP
3	5	2S N 4	170		23
2	8	1NT N 3	150		19
7	1	2D E-2	100		11
6	4	1NT E 1		90	-17
10	12	4S N-1		100	-18
11	9	4S N-1		100	-18

22

♠K72
♥J93
♦K95
♣AKQJ

♠J85
♥Q74
♦J6
♣109854



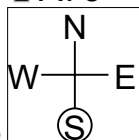
♠Q1063
♥AK62
♦42
♣732
♠A94
♥1085
♦AQ10873
♣6

NS	EW	Contract	N-S	E-W	IMP
7	1	3NT N 5	460		35
10	12	3NT N 4	430		30
6	4	3NT N 4	430		30
2	8	5D S-1		50	-29
11	9	5D S-1		50	-29
3	5	6D S-2		100	-37

23

♠A632
♥AKQ107
♦5
♣A73

♠J
♥J9542
♦J96
♣KJ108



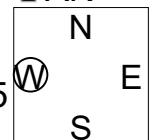
♠987
♥63
♦K7432
♣942
♠KQ1054
♥8
♦AQ108
♣Q65

NS	EW	Contract	N-S	E-W	IMP
6	4	7S S 7	2210		56
2	8	7S S 7	2210		56
10	12	6S S 7	1460		-7
7	1	6S S 6	1430		-10
11	9	6S S 6	1430		-10
3	5	6S S-1		100	-85

24

♠A932
♥742
♦A963
♣AK

♠KJ8
♥1065
♦J10875
♣Q8



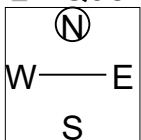
♠10765
♥KJ93
♦K
♣7653
♠Q4
♥AQ8
♦Q42
♣J10942

NS	EW	Contract	N-S	E-W	IMP
10	12	3NT N 5	460		5
6	4	3NT N 4	430		-1
2	8	3NT N 4	430		-1
7	1	3NT N 4	430		-1
3	5	3NT N 4	430		-1
11	9	3NT N 4	430		-1

25

♠KJ
♥9
♦KQ1075
♣KQ987

♠862
♥Q108
♦932
♣A654



♠A73
♥KJ742
♦J64
♣J10
♠Q10954
♥A653
♦A8
♣32

NS	EW	Contract	N-S	E-W	IMP
3	5	3S S 4	170		28
10	12	3D N 5	150		22
7	1	3NT S-1		50	-5
6	4	3NT S-2		100	-15
2	8	3NT S-2		100	-15
11	9	3NT S-2		100	-15