

IMP 第4水曜 朝 シニア Round 5 Section B 2022年3月30日(水)

1

♠873
♥AKQ953
♦A
♣AJ8

♠K95
♥72
♦K94
♣97632

♠A
♥J84
♦QJ10865
♣Q54

W E
S

♠QJ10642
♥106
♦732
♣K10

Av: NS=+480

N-S	E-W	Contract	N-S	E-W	IMP
1	2	4H	N 7	510	1
2	1	4H	N 6	480	0
3	4	4H	N 6	480	0
4	3	4H	N 6	480	0
5	6	4H	N 6	480	0
6	5	4H	N 6	480	0

2

♠KJ104
♥108542
♦A106
♣K

♠862
♥QJ
♦J85
♣A8753

♠75
♥AK73
♦Q732
♣QJ9

W E
S

♠AQ93
♥96
♦K94
♣10642

Av: NS=+310

N-S	E-W	Contract	N-S	E-W	IMP
1	2	3H	N 5	200	-3
2	1	4H	N 5	650	8
3	4	4H	N 5	650	8
4	3	3H	N 4	170	-4
5	6	3H	N 5	200	-3
6	5	4H	N-1	100	-9

3

♠9
♥K1095
♦AKQ9
♣8765

♠32
♥AQ2
♦J87
♣QJ1042

♠K108654
♥J7
♦1053
♣A9

W E
S

♠AQJ7
♥8643
♦642
♣K3

Av: NS=-80

N-S	E-W	Contract	N-S	E-W	IMP
1	2	2S	S-1	50	1
2	1	2S	S-1	50	1
3	4	2S	S 2	110	5
4	3	2S	S-2	100	-1
5	6	2S	S-2	100	-1
6	5	2S	S-2	100	-1

4

♠KQ8
♥AJ9876
♦103
♣95

♠952
♥KQ3
♦982
♣J1072

♠10743
♥2
♦J7654
♣Q86

W E
S

♠AJ6
♥1054
♦AKQ
♣AK43

Av: NS=-610

N-S	E-W	Contract	N-S	E-W	IMP
1	2	3NT	W 3	600	0
2	1	3NT	W 3	600	0
3	4	3NT	W 3	600	0
4	3	3NT	W 3	600	0
5	6	3NT	W 4	630	-1
6	5	3NT	W 4	630	-1

5

♠1093
♥43
♦KQ97654
♣A

♠AKJ87
♥1085
♦2
♣QJ94

♠6
♥762
♦A1083
♣K8762

W E
S

♠Q542
♥AKQJ9
♦J
♣1053

Av: NS=-440

N-S	E-W	Contract	N-S	E-W	IMP
1	2	4S	E 5	450	0
2	1	5S	E-1	50	10
3	4	4S	E 5	450	0
4	3	4H	W 5	450	0
5	6	4H	W 4	420	1
6	5	4S	E 5	450	0

6

♠AKQ532
♥53
♦KJ
♣A86

♠J7
♥A4
♦6432
♣Q10953

♠96
♥KQJ6
♦A987
♣K42

W E
S

♠1084
♥109872
♦Q105
♣J7

Av: NS=+480

N-S	E-W	Contract	N-S	E-W	IMP
1	2	4S	N 6	480	0
2	1	4S	N 6	480	0
3	4	4S	N 6	480	0
4	3	4S	N 6	480	0
5	6	3NT	S 6	490	0
6	5	4S	N 6	480	0

7

♠AK9
♥74
♦AJ732
♣1095

♠107643
♥QJ
♦Q84
♣KQ3

♠85
♥AK96532
♦9
♣642

W E
S

♠QJ2
♥108
♦K1065
♣AJ87

Av: NS=+280

N-S	E-W	Contract	N-S	E-W	IMP
1	2	2H	S 4	170	-3
2	1	4H	S 4	620	8
3	4	4H	S-1	100	-9
4	3	4H	S 4	620	8
5	6	3H	S 4	170	-3
6	5	3H	S 4	170	-3

8

♠J4
♥K96
♦AQJ863
♣65

♠A103
♥AQJ1082
♦K105
♣Q

♠KQ98
♥5
♦72
♣KJ10873

W E
S

♠7652
♥743
♦94
♣A942

Av: NS=-120

N-S	E-W	Contract	N-S	E-W	IMP
1	2	2H	E 4	170	-2
2	1	3H	E-1	50	5
3	4	3H	E 4	170	-2
4	3	4H	E-2	100	6
5	6	2H	E 4	170	-2
6	5	4H	E 4	420	-7

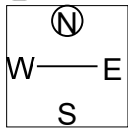
IMP 第4水曜 朝 シニア Round 5 Section B 2022年3月30日(水)

9

♠ 9765
♥ 1065
♦ KJ63
♣ A7

♠ 83
♥ A2
♦ Q10952
♣ J542

♠ AQJ4
♥ Q9743
♦ A84
♣ 6



Av: NS=-100

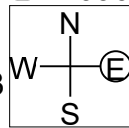
N-S	E-W	Contract	N-S	E-W	IMP
1	2	4H	S-3	150	-2
2	1	3H	S-3	150	-2
3	4	3H	S-1	50	2
4	3	4H	S-1	50	2
5	6	3H	S-3	150	-2
6	5	3H	S 4	170	7

10

♠ J95
♥ 1095
♦ 82
♣ K10964

♠ AK
♥ AQJ82
♦ K6
♣ AJ75

♠ 108643
♥ K64
♦ AJ97
♣ 8



Av: NS=-620

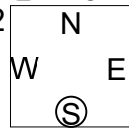
N-S	E-W	Contract	N-S	E-W	IMP
1	2	5H	E-1	100	12
2	1	3NT	E 3	600	1
3	4	3NT	W 4	630	0
4	3	3NT	E 4	630	0
5	6	3NT	W 4	630	0
6	5	3NT	E 3	600	1

11

♠ K986
♥ Q109
♦ K
♣ AK872

♠ AQ3
♥ A5
♦ 10876
♣ Q1064

♠ 10
♥ KJ7632
♦ AQJ94
♣ 3



Av: NS=+450

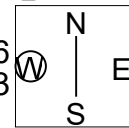
N-S	E-W	Contract	N-S	E-W	IMP
1	2	4H	S 5	450	0
2	1	5H	S 5	450	0
3	4	4H	S 5	450	0
4	3	4H	S 5	450	0
5	6	4H	S 5	450	0
6	5	4H	S 5	450	0

12

♠ A94
♥ A87532
♦ 972
♣ 4

♠ KQJ876
♥ J4
♦ K6
♣ QJ9

♠ 32
♥ 9
♦ J104
♣ AK107653



Av: NS=+40

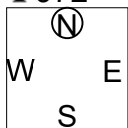
N-S	E-W	Contract	N-S	E-W	IMP
1	2	2S	E 2	110	-4
2	1	4S	E-2	100	2
3	4	3NT	W 3	400	-10
4	3	4S	E-2	100	2
5	6	3S	E-1	50	0
6	5	3S	E-2	100	2

17

♠ AJ95
♥ AJ6
♦ K73
♣ 972

♠ 2
♥ K109743
♦ QJ9
♣ AKQ

♠ Q1074
♥ 82
♦ A104
♣ J1053



Av: NS=-60

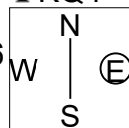
N-S	E-W	Contract	N-S	E-W	IMP
1	2	4S	N-2	100	-1
2	1	3S	N-2	100	-1
3	4	3H	E-1	50	3
4	3	3S	N-2	100	-1
5	6	3H	E-2	100	4
6	5	3S	N-2	100	-1

18

♠ J9876
♥ 3
♦ K1064
♣ KQ4

♠ A105
♥ QJ52
♦ J53
♣ 862

♠ KQ4
♥ A874
♦ 98
♣ A1073



Av: NS=+140

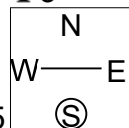
N-S	E-W	Contract	N-S	E-W	IMP
1	2	1NT	S 3	150	0
2	1	2S	N 4	170	1
3	4	1NT	S 2	120	-1
4	3	1NT	S 2	120	-1
5	6	2S	N 5	200	2
6	5	2NT	S 2	120	-1

19

♠ Q1084
♥ K8764
♦ 1073
♣ 3

♠ 76
♥ Q53
♦ Q8652
♣ Q96

♠ KJ932
♥ J2
♦ KJ
♣ A1042



Av: NS=+160

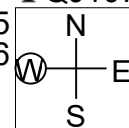
N-S	E-W	Contract	N-S	E-W	IMP
1	2	3S	S 4	170	0
2	1	3S	S 4	170	0
3	4	2S	S 3	140	-1
4	3	2S	S 3	140	-1
5	6	2S	S 4	170	0
6	5	2S	S 4	170	0

20

♠ J3
♥ 9753
♦ Q6
♣ QJ1076

♠ 642
♥ K42
♦ A732
♣ A94

♠ A1087
♥ J10
♦ K954
♣ K83



Av: NS=+180

N-S	E-W	Contract	N-S	E-W	IMP
1	2	3NT	W-1	100	-2
2	1	2NT	E-2	200	1
3	4	2NT	E 3	150	-8
4	3	2NT	E-3	300	3
5	6	3NT	W-2	200	1
6	5	3NT	E-2	200	1

21

♠ A1076
♥ J93
♦ AQ962
♣ 8

♠ 543
♥ AK108
♦ K7
♣ AK97

♠ J8
♥ 7654
♦ 843
♣ Q542

♠ KQ92
♥ Q2
♦ J105
♣ J1063

Av: NS=+20

N-S	E-W	Contract	N-S	E-W	IMP
1	2	1NT W-1	50		1
2	1	1NT W 2		120	-4
3	4	1NT W-1	50		1
4	3	1NT W 1		90	-3
5	6	1NT W-1	50		1
6	5	2S S 4	170		4

22

♠ 9
♥ A10987
♦ K8432
♣ 103

♠ A63
♥ Q
♦ Q1096
♣ AKQ64

♠ K72
♥ K653
♦ A75
♣ 852

♠ QJ10854
♥ J42
♦ J
♣ J97

Av: NS=-630

N-S	E-W	Contract	N-S	E-W	IMP
1	2	3NT W 3		600	1
2	1	3NT E 4		630	0
3	4	3NT W 5		660	-1
4	3	3NT E 4		630	0
5	6	3NT W 6		690	-2
6	5	2NT E 3		150	10

23

♠ Q76
♥ K762
♦ 106
♣ J1064

♠ 832
♥ J10
♦ Q43
♣ A9872

♠ A
♥ Q9843
♦ K952
♣ Q53

♠ KJ10954
♥ A5
♦ AJ87
♣ K

Av: NS=+500

N-S	E-W	Contract	N-S	E-W	IMP
1	2	4S S 4	620		3
2	1	4S S 4	620		3
3	4	4S S-1		100	-12
4	3	4S S 4	620		3
5	6	3S S 3	140		-8
6	5	4S S 4	620		3

24

♠ 42
♥ Q82
♦ K6543
♣ Q32

♠ Q105
♥ AK1063
♦ AQJ7
♣ 5

♠ K973
♥ 9
♦ 108
♣ KJ10987

♠ AJ86
♥ J754
♦ 92
♣ A64

Av: NS=0

N-S	E-W	Contract	N-S	E-W	IMP
1	2	2S E 2		110	-3
2	1	4H W-3	150		4
3	4	2D W 2		90	-3
4	3	3H W-3	150		4
5	6	4S E-1	50		2
6	5	3NT E 5		460	-10

25

♠ A73
♥ 108
♦ J863
♣ 10865

♠ KQJ964
♥ Q
♦ 105
♣ AQJ7

♠ 52
♥ AK754
♦ A94
♣ K92

♠ 108
♥ J9632
♦ KQ72
♣ 43

Av: NS=-680

N-S	E-W	Contract	N-S	E-W	IMP
1	2	4S W 6	680		0
2	1	4S W 6	680		0
3	4	4S W 6	680		0
4	3	4S E 6	680		0
5	6	3NT E-1	100		13
6	5	4S W 6	680		0

26

♠ K5
♥ 87
♦ KJ10984
♣ A87

♠ J98763
♥ AKJ4
♦ Q7
♣ 6

♠ A
♥ Q532
♦ 652
♣ KQJ32

♠ Q1042
♥ 1096
♦ A3
♣ 10954

Av: NS=-50

N-S	E-W	Contract	N-S	E-W	IMP
1	2	2S W 2		110	-2
2	1	4S W-3	300		8
3	4	3H W 3		140	-3
4	3	2H W 3		140	-3
5	6	4H W 4		620	-11
6	5	4H W-2	200		6

27

♠ 108
♥ A865
♦ 976
♣ 9842

♠ 952
♥ KQ10942
♦ Q1084
♣

♠ AQJ763
♥ 73
♦ J2
♣ QJ3

♠ K4
♥ J
♦ AK53
♣ AK10765

Av: NS=+40

N-S	E-W	Contract	N-S	E-W	IMP
1	2	5C S-1		50	-3
2	1	5C S-1		50	-3
3	4	3C S 4	130		3
4	3	5C S-1		50	-3
5	6	4C S 4	130		3
6	5	4C S 4	130		3

28

♠ AJ652
♥ A7
♦ 10983
♣ Q7

♠ Q84
♥ K82
♦ AJ42
♣ K63

♠ K97
♥ Q4
♦ Q765
♣ J1092

♠ 103
♥ J109653
♦ K
♣ A854

Av: NS=-80

N-S	E-W	Contract	N-S	E-W	IMP
1	2	1NT E 3		150	-2
2	1	1NT E-2	100		5
3	4	2C W 3		110	-1
4	3	1NT E 2		120	-1
5	6	1NT E-1	50		4
6	5	1NT E 3		150	-2