

IMP 第4水曜 朝 シニア Round 3 Section B 2022年1月26日(水)

1

♠KQ9853
♥J2
♦872
♣QJ

♠72
♥1094
♦AQ964
♣K62

♠AJ104
♥763
♦K
♣109743

♠6
♥AKQ85
♦J1053
♣A85

Av: NS=+70

N-S	E-W	Contract	N-S	E-W	IMP
1	4	2S	N-1	50	-3
4	1	2S	N 3	140	2
2	6	2S	N 2	110	1
6	2	2S	N 2	110	1
3	5	2NT	N 2	120	2
5	3	2S	N-2	100	-5

2

♠942
♥42
♦Q86
♣87532

♠KJ10873
♥K3
♦10974
♣4

♠65
♥J1085
♦AK5
♣KQ96

♠AQ
♥AQ976
♦J32
♣AJ10

Av: NS=-130

N-S	E-W	Contract	N-S	E-W	IMP
1	4	2NT	S-1	100	1
4	1	2S	W 3	140	0
2	6	2S	W 3	140	0
6	2	2S	W 3	140	0
3	5	2S	W 2	110	1
5	3	2S	W 2	110	1

3

♠10865
♥4
♦AK82
♣KQJ3

♠KJ3
♥KQ862
♦1043
♣96

♠AQ4
♥A753
♦65
♣A1042

♠972
♥J109
♦QJ97
♣875

Av: NS=-160

N-S	E-W	Contract	N-S	E-W	IMP
1	4	1C	N-1	50	3
4	1	2H	W 4	170	0
2	6	2H	W 3	140	1
6	2	2H	W 4	170	0
3	5	3H	W 4	170	0
5	3	3H	E 4	170	0

4

♠10965
♥3
♦10974
♣Q1076

♠KJ842
♥KQ97542
♦K
♣K

♠A1086
♥AQJ32
♦J432
♣J432

♠AQ73
♥J
♦K865
♣A985

Av: NS=-1060

N-S	E-W	Contract	N-S	E-W	IMP
1	4	4H	W 7	710	8
4	1	6Hx	W 6	1660	-12
2	6	6H	W 6	1430	-9
6	2	5H	W 6	680	9
3	5	6H	W 6	1430	-9
5	3	4H	W 5	650	9

5

♠9
♥Q85
♦A52
♣987543

♠J
♥AK9764
♦J73
♣KJ10

♠AQ1087
♥2
♦K1064
♣A62

♠K65432
♥J103
♦Q98
♣Q

Av: NS=-430

N-S	E-W	Contract	N-S	E-W	IMP
1	4	3NT	E 4	430	0
4	1	3NT	E 4	430	0
2	6	3NT	E 4	430	0
6	2	3NT	E 4	430	0
3	5	3NT	E 3	400	1
5	3	3NT	E 4	430	0

6

♠K9
♥Q105
♦J3
♣AK10543

♠Q4
♥AJ862
♦AK6
♣QJ7

♠10872
♥974
♦Q9752
♣8

♠AJ653
♥K3
♦1084
♣962

Av: NS=-80

N-S	E-W	Contract	N-S	E-W	IMP
1	4	1NT	W 1	90	0
4	1	2H	W 5	200	-3
2	6	1NT	W 1	90	0
6	2	2S	S-1	50	1
3	5	1NT	W 1	90	0
5	3	4D	E-2	200	7

7

♠985
♥K1032
♦K1073
♣A3

♠AQ62
♥A764
♦86
♣K52

♠J43
♥J
♦AJ954
♣J10764

♠K107
♥QJ985
♦Q2
♣Q98

Av: NS=+150

N-S	E-W	Contract	N-S	E-W	IMP
1	4	3H	N-1	100	-6
4	1	3NT	W-4	400	6
2	6	3NT	W-3	300	4
6	2	3C	W 3	110	-6
3	5	2NT	W-2	200	2
5	3	4C	E-2	200	2

8

♠A97
♥AKQ10
♦A76
♣972

♠J5
♥9872
♦9532
♣Q105

♠K1084
♥J654
♦J10
♣AK4

♠Q632
♥3
♦KQ84
♣J863

Av: NS=+290

N-S	E-W	Contract	N-S	E-W	IMP
1	4	3NT	N 3	400	3
4	1	3NT	N 3	400	3
2	6	3NT	N-1	50	-8
6	2	3NT	N 4	430	4
3	5	3NT	N 3	400	3
5	3	3NT	N-1	50	-8

9

♠ KJ108
 ♥ 104
 ♦ 85
 ♣ A10832
 ♠ 3
 ♥ J9853
 ♦ AJ104
 ♣ QJ5
 ♠ A
 ♥ AQ6
 ♦ KQ9763
 ♣ K96
 ♠ Q976542
 ♥ K72
 ♦ 2
 ♣ 74

Av: NS=-350

N-S	E-W	Contract	N-S	E-W	IMP
1	4	5S	S-2	100	6
4	1	4S	S-1	50	7
2	6	5D	E 5	600	-6
6	2	5D	E 5	600	-6
3	5	5D	E 5	600	-6
5	3	4Sx	S-1	100	6

10

♠ AQ10654
 ♥ 763
 ♦ AQ9
 ♣ 10
 ♠ K2
 ♥ K
 ♦ K106432
 ♣ AQJ5
 ♠ 8
 ♥ Q10984
 ♦ 875
 ♣ 8643
 ♠ J973
 ♥ AJ52
 ♦ J
 ♣ K972

Av: NS=+510

N-S	E-W	Contract	N-S	E-W	IMP
1	4	4S	N 4	620	3
4	1	4S	N 4	620	3
2	6	4S	N 4	620	3
6	2	4S	N 4	620	3
3	5	3S	N 4	170	-8
5	3	4S	N-1	100	-12

11

♠ A1043
 ♥ K104
 ♦ J
 ♣ QJ1074
 ♠ J85
 ♥ Q963
 ♦ K6532
 ♣ A
 ♠ Q6
 ♥ AJ85
 ♦ AQ104
 ♣ 652
 ♠ K972
 ♥ 72
 ♦ 987
 ♣ K983

Av: NS=-100

N-S	E-W	Contract	N-S	E-W	IMP
1	4	2S	S 3	140	6
4	1	3H	W 4	170	-2
2	6	3H	W 4	170	-2
6	2	2S	S 2	110	5
3	5	3H	W 4	170	-2
5	3	3H	W 5	200	-3

12

♠ Q97
 ♥ 10873
 ♦ QJ10
 ♣ AKJ
 ♠ K853
 ♥ K54
 ♦ 9732
 ♣ Q4
 ♠ AJ642
 ♥ Q2
 ♦ K54
 ♣ 1086
 ♠ 10
 ♥ AJ96
 ♦ A86
 ♣ 97532

Av: NS=+510

N-S	E-W	Contract	N-S	E-W	IMP
1	4	4H	N 5	650	4
4	1	4H	N 4	620	3
2	6	3NT	N-2	200	-12
6	2	3S	E-2	100	-9
3	5	4H	N 5	650	4
5	3	4H	N 5	650	4

17

♠ K105
 ♥ K108642
 ♦ 8643
 ♠ A2
 ♥ 98632
 ♦ A973
 ♣ A2
 ♠ Q943
 ♥ 74
 ♦ QJ
 ♣ KQJ95
 ♠ KJ108765
 ♥ AQJ
 ♦ 5
 ♣ 107

Av: NS=-180

N-S	E-W	Contract	N-S	E-W	IMP
1	4	4S	S-3	150	1
4	1	3S	S-2	100	2
2	6	2S	S 2	110	7
6	2	2S	S-1	50	4
3	5	3NT	W 3	400	-6
5	3	3NT	E 3	400	-6

18

♠ Q8
 ♥ AKJ64
 ♦ 742
 ♣ A85
 ♠ K9
 ♥ Q102
 ♦ J9865
 ♣ K64
 ♠ A1065
 ♥ 85
 ♦ K103
 ♣ Q1072
 ♠ J7432
 ♥ 973
 ♦ AQ
 ♣ J93

Av: NS=+80

N-S	E-W	Contract	N-S	E-W	IMP
1	4	2H	N 2	110	1
4	1	3D	W-1	50	-1
2	6	4H	N-1	100	-5
6	2	2H	N 3	140	2
3	5	2H	N 2	110	1
5	3	3D	W-1	50	-1

19

♠ KJ6
 ♥ QJ1054
 ♦ K4
 ♣ 1072
 ♠ A82
 ♥ 862
 ♦ Q10873
 ♣ 96
 ♠ Q109754
 ♥ 73
 ♦ AJ9
 ♣ 43
 ♠ 3
 ♥ AK9
 ♦ 652
 ♣ AKQJ85

Av: NS=+450

N-S	E-W	Contract	N-S	E-W	IMP
1	4	4H	N 4	420	-1
4	1	5C	S 5	400	-2
2	6	4H	N 6	480	1
6	2	3NT	N 6	490	1
3	5	4H	N 4	420	-1
5	3	3NT	N 6	490	1

20

♠ K53
 ♥ J1095
 ♦ KQ74
 ♣ A3
 ♠ AJ9762
 ♥ 7
 ♦ J5
 ♣ K974
 ♠ Q8
 ♥ 42
 ♦ A108
 ♣ QJ10862
 ♠ 104
 ♥ AKQ863
 ♦ 9632
 ♣ 5

Av: NS=+620

N-S	E-W	Contract	N-S	E-W	IMP
1	4	4H	S 4	620	0
4	1	4H	S 4	620	0
2	6	3NT	N 3	600	-1
6	2	4H	S 4	620	0
3	5	3H	S 4	170	-10
5	3	4H	S 4	620	0

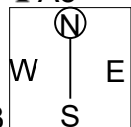
IMP 第4水曜 朝 シニア Round 3 Section B 2022年1月26日(水)

21

♠ J73
♥ A9
♦ KJ10964
♣ A5

♠ 1096
♥ 8753
♦ A72
♣ J42

♠ AQ5
♥ KQ1064
♦ Q8
♣ K97



Av: NS=+680

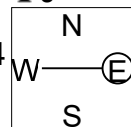
N-S	E-W	Contract	N-S	E-W	IMP
1	4	3NT S	5	660	-1
4	1	3NT S	6	690	0
2	6	3NT S	6	690	0
6	2	3NT N	6	690	0
3	5	3NT S	5	660	-1
5	3	3NT S	4	630	-2

22

♠ AK9765
♥ AJ82
♦ KJ
♣ J

♠ Q3
♥ K10
♦ A5
♣ KQ87654

♠ 10
♥ 53
♦ 10987643
♣ 1032



Av: NS=+90

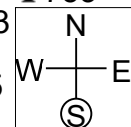
N-S	E-W	Contract	N-S	E-W	IMP
1	4	3S N-1	50	-4	
4	1	2C E	4	130	-6
2	6	3S N-2	100	-5	
6	2	4H W-5	500	9	
3	5	4C E-2	200	3	
5	3	5C E-3	300	5	

23

♠ 105
♥ Q763
♦ Q1064
♣ 753

♠ 876
♥ AJ105
♦ 73
♣ J1064

♠ K942
♥ K
♦ K82
♣ KQ982



Av: NS=-130

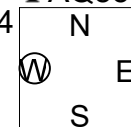
N-S	E-W	Contract	N-S	E-W	IMP
1	4	1NT W	2	120	0
4	1	1NT W	3	150	-1
2	6	1NT W	2	120	0
6	2	4H E-1	100	6	
3	5	3H E	4	170	-1
5	3	2H E	3	140	0

24

♠ AK9
♥ AKQJ7
♦ AQ853
♣ AQ853

♠ Q952
♥ 102
♦ 102
♣ J10964

♠ K1083
♥ Q8743
♦ 643
♣ 2



Av: NS=+610

N-S	E-W	Contract	N-S	E-W	IMP
1	4	5D N	6	420	-5
4	1	3NT S	6	490	-3
2	6	4H S	7	510	-3
6	2	6D N	7	940	8
3	5	6H S	7	1010	9
5	3	3NT S	6	490	-3

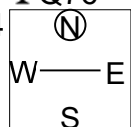
25

♠ 109653
♥ K64
♦ Q6
♣ Q76

♠ AKQJ74
♥ 2
♦ 542
♣ J98

♠ AQ1098
♥ A1087
♦ K1054
♣ 82

♠ 82
♥ J753
♦ KJ93
♣ A32



Av: NS=-50

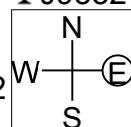
N-S	E-W	Contract	N-S	E-W	IMP
1	4	4S W-1	100	4	
4	1	4S W-2	200	6	
2	6	3NT E	5	660	-12
6	2	3NT E	3	600	-11
3	5	4S W-3	300	8	
5	3	3NT E-1	100	4	

26

♠ AQ2
♥ Q10
♦ 983
♣ J9532

♠ 9653
♥ 97
♦ 5
♣ AKQ864

♠ 107
♥ KJ6432
♦ Q106
♣ 107



Av: NS=-510

N-S	E-W	Contract	N-S	E-W	IMP
1	4	2D W	4	130	9
4	1	3D W	4	130	9
2	6	4S E	4	620	-3
6	2	4S E	4	620	-3
3	5	4S E	5	650	-4
5	3	4S E	5	650	-4

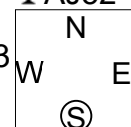
27

♠ J1054
♥ K74
♦ K4
♣ AJ52

♠ 83
♥ QJ10653
♦ 8762
♣ 9

♠ K96
♥ 92
♦ AJ53
♣ KQ103

♠ AQ72
♥ A8
♦ Q109
♣ 8764



Av: NS=+420

N-S	E-W	Contract	N-S	E-W	IMP
1	4	4S N	4	420	0
4	1	4S N	4	420	0
2	6	4S N	4	420	0
6	2	4S N	4	420	0
3	5	4S N	4	420	0
5	3	4S N	5	450	1

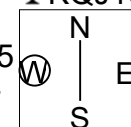
28

♠ 75
♥ 1064
♦ J9
♣ KQJ1054

♠ K2
♥ AKJ975
♦ AQ104
♣ A

♠ AJ9643
♥ 832
♦ 9873
♣ Q108

♠ Q108
♥ Q
♦ K876532
♣ 62



Av: NS=-720

N-S	E-W	Contract	N-S	E-W	IMP
1	4	6H W	6	980	-6
4	1	4S W	5	450	7
2	6	6H W	6	980	-6
6	2	6H W	7	1010	-7
3	5	4H W	4	420	7
5	3	4H W	6	480	6